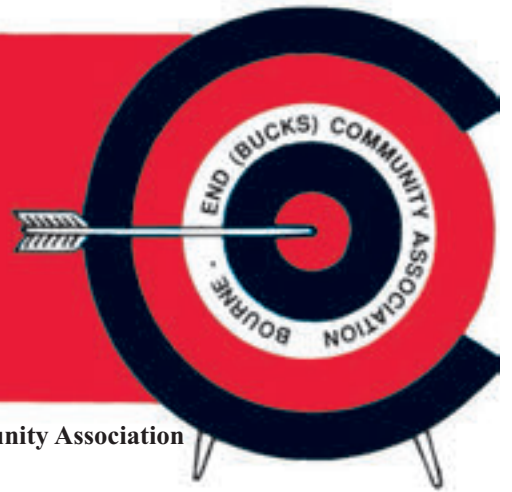


target



VOL.52 No6
DEC/JAN 2017

£1 *Suggested price*

The Journal of Bourne End (Bucks) Community Association

COME AND JOIN IN THE FUN...

Bourne End's Late Opening and Charity Fun Night is now a highlight on the festive calendar

Once again, everyone is invited to Bourne End's Late Opening and Charity Fun Night this year being held in The Parade and Wakeman Road on Friday December 2 from 5pm.

This annual event has grown bigger and bigger in recent years with visitors now coming from far afield to join in the fun.

The shops and businesses of Bourne End, the community association and the Rotary Club of Cookham Bridge have again joined forces to stage this annual Christmas get together and, thanks to the generous funding by Bourne End businesses and villagers, the Christmas lights (including the winning children's light) will add Christmas sparkle to the event.

Many shops will be staying open late, some offering drinks and seasonal snacks. The famous Bourne End hot dogs will be on sale, local scouts will be roasting chestnuts. The day centre and library will be open and joining in the fun.

The village will be awash with mulled wine, food samples from Riverlight, The Walnut Tree, The Spade Oak pub and Chives.

There'll be things going on to entertain the whole family. Santa will be in his grotto in the Bourne End Motor Company and there'll be reindeers too.

Children will be able to try out sitting in the driving seat of Adam Elder's racing car and to test the siren of the First Response Ambulance. And they can meet the Medical Detection Dogs outside the vets.

In addition there will be all manner of stalls around the village selling gifts and running fun games hosted by local organisations and Youth Enterprise groups.

Throughout the evening local school and church choirs will serenade the crowds with carols and Christmas music.

Once again the council has agreed to free parking in Wakeman Road Car Park all day on Friday December 2.

Members of The Rotary Club of Cookham Bridge are excited about supporting the event. Lead member Bill Bearn said: "The Fun Night takes a lot of organisation and hard work by the Bourne End community and we really enjoy being part of that.

"We always help with the road closure,

setting up the stalls and our president is part of the ceremony of switching on the winning child's light.

"Additionally, Father Christmas always needs elves, the barbecue needs servers and faces need painting so there's plenty for us to join in with.

"It is traditionally a great venue for families to enjoy a fun Winter's evening on the street, visiting stalls and shops as well as the warmth of the library. We love helping make this a great evening and each year it is the start of our Rotary Christmas."

So wrap up warmly and head into the village centre for a traditional evening of fun. See you on the 2nd!



WIN...WIN...WIN... A meal for two at Sindhu

Win a three course lunch for two at Michelin-starred chef, Atul Kochhar's Sindhu restaurant at The Compleat Angler in Marlow.

As a Christmas treat Target has joined up with Virgin Experience Days (who are based in Bourne End) to give you the chance to win

this fabulous prize. The winner and their pal or partner will enjoy a three course lunch at the fabulous restaurant, a glass of Prosecco each and a souvenir signed menu. Full details on how to enter can be found on page 10.

Good luck!



Bourne End's Christmas Light Competition was as fiercely contested as ever in its 13th year.

The winning design was by 10-year-old Maisie Paice (pictured), of St Paul's School with another St Paul's pupil, Daisey Blanksby coming a close second.

Maisie's design of a gingerbread man is now being made into a Christmas light for The Parade and will be unveiled on Fun Night.

The makers, Lamps & Tubes Ltd, will incorporate the winner's first name and the year into the design, as in previous years. For the second year running Kevin Parker of Space Pod is sponsoring the light.

53rd

**TARGET MAGAZINE
NOW INTO ITS 53rd YEAR**



Target magazine is published by Bourne End (Bucks) Community Association and distributed free to over 5,000 homes in the local area. The distribution network includes Bourne End and Wooburn Green as well as the outlying hamlets of Hedsor, Well End, Little Marlow, Cores End, Upper Bourne End, Wooburn Common and Wooburn Moor.

Bourne End (Bucks) Community Association

The Centre, Wakeman Road, Bourne End, Bucks SL8 5SX
Telephone: 01628 522604
Office Hours: Mon - Fri 9am to 4pm
Senior Administrator: Sue Ambrose

Visit: www.bourneendbucks.com for current information or email office@bebca.org.uk

Editor

Debra Aspinall
Tel: 07881 558027
editor@targetmagazine.org.uk

Managing Editor & Distribution

Barrie Penfold
Tel: 01628 525415
email: managingeditor@targetmagazine.org.uk

Advertising & Production

Barrie Penfold
Tel: 01628 525415
advertising@targetmagazine.org.uk
Our advertising rate card is on www.bourneendbucks.com. Click on Community Association, then Target.

Proofreading Christina Martell and Meriel Riseley

Printers

Gpex, Pinstone Way,
Gerrards Cross SL9 7BJ
Telephone: 01753 887450



All material appearing in Target is the copyright of Bourne End (Bucks) Community Association. The Editor reserves the right to select letters and reports for publication and to edit for grammar, style and length.

BULL'S EYE

Well it's almost here again, Christmas. The season of goodwill toward men. The last two issues of Target magazine had a tone of doom and gloom on the front pages, so we were determined that this issue should feature something happy and uplifting.

Thanks to Virgin Experience Days (whose head office is in Bourne End) we are able to offer a competition prize of lunch for two at Sindhu restaurant at The Complete Angler in Marlow. I have dined there and I can promise you the winner is in for a treat. See page 10 for details.

I love competitions, but the odds of winning are usually ridiculously high. However with local magazines, like ours, the odds are far more in your favour of winning. If every single household entered the competition you'd still have odds of 5,000-to-one (considerably better than most competitions). What's more, it doesn't need to cost you a penny to enter. You can drop your entry at the community centre.

If you run a local business and would like to follow in Virgin's footsteps by offering a prize to readers email me at editor@targetmagazine.org.uk

All that's left for me to say now is have a fabulous Christmas, try to forget any doom and gloom at least for the festive season and let's all look forward to a great 2017.

Debra Aspinall. editor



Cards for Good Causes have once again set up a stall at St Dunstan's Church selling Christmas cards from Thursday December 1 to Friday December 16. The stall is open Monday to Saturday, 9.30am to 4pm.

This lovely card (left) featuring Bourne End Marina (©Cuckoo Fair), is sure to be a best seller. The artist is Colin Tuffrey and he lives in the Oxfordshire Chilterns.

For more information on this worthwhile organisation go to www.cardsforcharity.co.uk

Could you spare a couple of hours every other month to help with the distribution of Target magazines? Many of our regular helpers have been doing this for years, but we have lost a few wonderful helpers in recent years due to illness and/or old age. Maybe you could help out while you walk your dog? Or if you are thinking of getting fitter in 2017 then walking round your neighbourhood delivering Target could help you achieve your goals! Please contact Barrie on 01628 525415 if you can help.

WANTED

Advertising sales person

to help sell adverts for Target Magazine and look after existing advertisers. No previous experience necessary.

This is a voluntary role so even if you could only do a few hours each month it would be greatly appreciated.

Contact Barrie on 01628 525415 if you can help.

ABOUT TARGET

Target magazine was launched in 1964 to provide information about the new Bourne End Community Association, with the name referring to the money required to build a new community centre. Over the years the magazine has grown, and its distribution area has been extended as the population has expanded through Bourne End, Wooburn Green and the surrounding villages.

Bourne End Community Association was formed in 1962 by local people who wanted a social centre to meet the needs of a growing community. Fund raising and determination saw the community centre open in Wakeman Road on 28th October 1967. Another hall was added a few years later and constant improvements have been made over the years.

See pages 36-39 for more information on the facilities and activities available at the community centre.



With the nights drawing in and the Indian Summer that suddenly turned to bleak Winter we could be downhearted. However my intention is to be upbeat with this article – and with good reason.

Let's start with the local planning issue and the efforts that we have made to turn around Wycombe District Council's intentions with regard to our Green Belt.

Just to remind everyone where we are with the proposals for the New Local Plan. We accept that housing is required, which means that some land has to be sacrificed. But it is which land and where that is the crucial question. And this should never include Green Belt.

With our experience of public inquiries we now accept that professional advice is essential. With this firmly in mind we commissioned a firm of planning consultants to consider WDC's proposals and comment.

Initially the Sustainability Appraisal was looked at and the resulting document sent to the planning department. Several flaws were highlighted.

We then further commissioned an investigation into the WDC intention of removing sites off Northern Heights and Hollands Farm from the Green Belt.

Once removed both sites would be developed. As

we have stated – houses do need to be built, but not there and not in those quantities, especially without any noticeable improvement to our infrastructure. Health services, schools, roads and car parking are the essentials for any area.

These two professionally written assessments have cost the residents association around £4,000 – part of which has been provided by local residents and organisations. Our heartfelt thanks to all who have donated. Our hope is that by putting forward constructive criticism – based on planning law – WDC will think again.

A recent communication from WDC says that the proposed site at Northern Heights has been withdrawn having no potential for development.

We do not claim that our efforts have totally resulted in this success, but without doubt professionally produced objections must help in swaying the planners at the council.

However this does leave the bigger problem of Hollands Farm and its proposed release from the Green Belt.

Our planning consultant has highlighted several areas where WDC have frankly got it wrong.

Recently WDC refused planning for a site at Heavens Lee – just above Hollands Farm. The reasons given could equally apply to Hollands Farm. How can one be a good decision and not the other?

The end result is that if WDC persist in wanting to take this proposal to the public examination of their Local Plan it will be judged independently by a new Planning Inspector.

We believe that the better the evidence - and presented by a professional - the better its chance of being successful.

We remain optimistic and will continue to work for the whole of Bourne End.

As a residents' association and, indeed, our community as a whole we should be pleased with the final result of the McCarthy & Stone development of later living accommodation at Blyton House.

Casting your minds back to the original scheme, the design was for a contemporary block that would not have been out of place on the Costa Blanca and, bear in mind, that was the preferred choice of the planning department at WDC.

Between us we convinced them that something traditional was far more suitable for our village. And that is what we got. It does show that we can influence decisions.

More importantly, from reports that I have heard, the new residents love living there.

And of equal importance is the fact that their move has freed up family homes around Bourne End and Wooburn Green for new buyers. That's what is known as a win-win situation.

Elsewhere along The Parade we see shops re-opening and offering a range of services and goods. And even though one Co-op might have closed a new, modern, store will open in Blyton House.

And so, as we near the end of this year, we look ahead to 2017 and how it will no doubt bring with it a whole range of different opportunities and challenges.

I know that we, as a community, are up to these challenges and that we will succeed in keeping our environment green and friendly.

Thank you for reading this article and, as always, if you have any queries please feel free to give me a call. Seasons greetings!

Jim Penfold 01628 525415

MARTIN
VEHICLE SERVICING
ADAMS

YOUR LOCAL MOT SPECIALIST

A friendly family run business with
30 years experience

Servicing all cars, new and old also light
commercial vehicles.



- General car repairs and maintenance
- Free courtesy car available
- Tyres, exhausts and batteries supplied and fitted
- Latest diagnostic equipment for all makes of vehicle
- Air conditioning service available
- 30 Years Experience



01628 850000

email: info@mavs.co.uk

Alexander House, Wessex Industrial Estate, Bourne End



Support local shops and businesses

WOOBURN'S CHRISTMAS LIGHTS CELEBRATION

SATURDAY 26TH NOVEMBER 2016 4:30PM

ALL WELCOME!

MARLOW UKULELE GROUP

FATHER CHRISTMAS

MULLED WINE AND MINCE PIES

PROCEEDS TOWARDS MAINTENANCE OF CHRISTMAS LIGHTS

THIS EVENT IS SUPPORTED BY:

THE RED LION SELLECK ELECTRICAL THE VILLAGE BAKERY

THE RED LION WOOBURN GREEN

Woburn Residents' Association www.woburnresidents.org
Registered - Charity Number: 288430



UPDATE
by
Penny Drayton

Six months ago Wycombe District Council announced their plans to build approx 750 new homes in Bourne End. They have recently reviewed their housing requirement numbers and made a few adjustments to their plans.

Firstly, the good news, they have withdrawn Northern Heights from their New Local Plan. This is obviously a good result although that site was never suitable for development anyway (neither are the others in our opinion).

Unfortunately though, they are still planning on pushing ahead with the Hollands Farm and Slate Meadow plans. There is a suggestion in fact that the number of houses proposed on Hollands Farm is now going to be increased (perhaps substantially), as other Green Belt sites have been dismissed, with the number of houses for Green Belt sites increased. We will not know for certain what the figures are until the final plan is produced in December or January.

The plan to proceed was confirmed at a council cabinet hearing on November 14 which I attended to formally present the petition which we ran last summer and had more than 2500 signatures.

The response from the council (in a nutshell) was that they know a 'few' people don't like the plan, but they think it is a good place to build so we may as well accept it. WELL we refuse to accept it! We as residents should have more say in what happens to our village and our community, and the voices of thousands of us should not be ignored!

The village cannot cope with thousands of more cars each day and no other infrastructure plans, along with the loss of our precious green space.

So where are we at with the campaign? We are raising as much money as we can. We have instructed planning consultants and transport consultants who are putting professional reports together for our case. We are raising money for legal representation and for the battle through the courts. We have launched our charity calendar (pictured) and this is for sale at events and locations throughout the village with 100% of the profit going to the cause. We are doing a maildrop around the area with easy donation options listed and we are accepting donations online via



<https://mydonate.bt.com/fundraisers/keepbourneendgreen>

Finally, we are re-grouping and holding a further community public meeting to update everyone. Please come along, especially those wishing to have more involvement with saving our village. The meeting will be held in the community centre on Thursday December 8 at 7.30pm. Please come along, please help, please support, please donate. We need to fight this together.

Facebook: [Keep Bourne End Green](https://www.facebook.com/KeepBourneEndGreen); Website: keepbourneendgreen.org
Phone: 0300 302 0866; email: info@keepbourneendgreen.org; Twitter: @kbegreen

Note from Editor: As Target magazine came back from the printers on November 25 the event (above) may have already taken place. However some of you will have received your magazine in time and we hope you are able to support Woburn Residents' Association's celebration.

CHATTELWORTH LIMITED

CONSTRUCTION
All aspects of general building works:
*Extensions/Alterations *Renovations *Carpentry/Joinery
*Brickwork/Paving *Plastering *Commercial & Domestic

FULL DECORATING SERVICES
*Painting * Internal/External *Wallpapering *Commercial & Domestic

GENERAL
*Roofing/Slating/Felting *General Maintenance

PURPOSE MADE JOINERY
*All aspects of purpose-made joinery from our own in-house workshop

MONARCH windows, doors & conservatories
also *Plastic Fascia *Barge Boards & Cladding *Guttering
A first class service at very competitive prices, call now for a no obligation quotation

A members of the Federation of Master Builders and FMB (Masterbond) Warranty Scheme

Chattelworth Works,
95a Queens Road,
High Wycombe, Bucks HP13 6AH

Tel/Fax 01494 461544

saxons

2 Furlong Road
Bourne End
Bucks
SL8 5DG

Come and visit our London trained professional stylists working to the highest standards

Whether you require advice on cutting or colour techniques Saxons is the salon to be seen at!

Open Monday – Saturday
9am – Late (by request)
Saxons welcomes your call
01628 524255

A. Stride



**Heating & Plumbing
Roofing
General Building
Painting & Decorating
Replastering & Guttering
Service**

Estimates Given Free

Telephone: 01494 440219

Mobile 07973 439781



OFFERING FRESHLY PREPARED
PUB FAVOURITES, SUNDAY ROASTS
& DAILY SPECIALS

WARMING LOG FIRE
PRIVATE DINING & FUNCTIONS
FESTIVE MENU AVAILABLE
11th – 24th DECEMBER

TUESDAY & THURSDAY SPECIAL MENUS
RESUME 15th JANUARY 2017

DOGS & MUDDY BOOTS VERY
WELCOME!

01628 532417
WALNUTTREEBOURNEEND.CO.UK

**For Hire - Two Halls
& kitchen facilities**

Ideal for children's parties; aerobics;
dancing; ballet classes; meetings, etc.

Contact Ann 01628 526865
or Muriel 01628 523622

Ample parking @ Cores End Church

ABSOLUTE CLEANING

**Windows & Gutters
Domestic & Commercial**

**Ring Mark Holt
0791 2985500**

**HUGHES
BUILDERS MERCHANTS**

CALL IN FOR A FRIENDLY, PERSONAL
AND LOCAL SERVICE

**BRICKS, DIY SUPPLIES, BLOCKS,
AGGREGATES, PAVING SLABS,
TIMBER, CALOR GAS, PAINT,
SALT and COAL**

01628 522022

24 Whitepit Lane, Flackwell Heath, Bucks.

11 PLUS TUITION

For the 11+ Transfer Test

Experienced primary teachers in
Bourne End

01628 528455/299856

www.11plusacademy.com



Another Answer
Books and Accounts

Efficient, Friendly and Local

TEL: 01628 530805
EMAIL: sylvia@anotheranswer.co.uk

First Floor, Bourne House,
Cores End Road, Bourne End SL8 5AR

www.anotheranswer.co.uk

aat
National Award in Business and
Accountancy
AAT Member since October 2010




BOOKKEEPING • PAYROLL • VAT • TAX RETURNS • ACCOUNTS

We'll open it now!

SECURE HOMES **30 MINUTE RESPONSE**

UPVC LOCK SPECIALISTS

**All Domestic & Commercial Lock Problems
Solved by your Trusted & Reliable Family Business**

- POLICE RECOMMENDED AND INSURANCE APPROVED LOCKS SUPPLIED & FITTED
- ALL TYPES OF DOOR & WINDOW LOCKS FITTED, OPENED, REPLACED & REPAIRED

• UPVC
• CHUBB
• YALE
• UNION
• ERA
• LEGGE
• ASEC
• VIRO
• ABLOY
• CISA
• ASSA

EST. OVER 33 YEARS
TRUST IN EXPERIENCE

Chubb Locks Yale **24 HOUR SERVICE** 365 DAYS A WEEK

01628 528433
Or if line busy: MOBILE
07831 487222

www.allsecurehomes.co.uk
10 Thames Close, Bourne End Bucks SL8 5QJ

FREE Advice, Surveys & Estimates

TALK TO A LOCAL LOCKSMITH ... not a Call Centre!



**Arnold
Funeral
Service**

21-23 Little Marlow Road Marlow
01628 898866

891 London Road, High Wycombe
01494 472572

- Traditional and Alternative Funerals
- 24 Hour Attendance
- Pre-Payment Plan



www.arnold-funerals.co.uk

Please support Target advertisers



Marina Life with Peter Osborne



I believe that in my last missive I indicated that the season was at an end and that Winter mode was the order of the day. It appears that I lied. It's mid-November (yes I know I'm late with my contribution) and it's still a balmy Autumn and the river traffic has not yet died its Winter death. Even Matty and Chaos have been working in their polo shirts, I know it's not due to the speed they work so it must be the weather. It's odd as there are still so many leaves on the trees, what are the odds of Christmas day being over 30 degrees?

As previously mentioned the season this year was slow in getting underway, however we are making up ground with this prolonged end to the season which is resulting in higher revenues than this time last year.

Our industry is different to other market sectors, say food retail, as people still eat even when it rains, but they will not use their boat. This can affect revenues as, if they don't use their boat, they are not using consumables which in turn means that they don't have to come to us to replenish them. This can dictate if we can afford to holiday in Bognor or the Caribbean.

As many people are aware, when (if) Winter arrives a certain amount of preparation needs to be carried out to the boats to protect them from the cold. Boats can have a domestic water system and also a water cooling system for the engine(s). If these are not drained, filled with anti-freeze or have a heater put on board there is a risk of ice in these systems that can crack pipes or cause engine blocks and the like. This work we call 'decommissioning'.

People are still using their boats and so many have not prepared their boat yet, no doubt we have the first serious frost and then the phone will not stop ringing.

I just wish to alert you to the fact that there is a boat thief about. Chaos was given a boat which he saw before he went on leave and on his return it had been stolen without me or Matty realising. The boat itself has three masts and is of wooden construction, it was taken but the thief did not take the cradle it was sitting on. The boat is about 18 inches long and was removed from the top of a cupboard in the office. Goodness knows how my dog Rocky failed to tackle the criminal. Anyway, Chaos has a cradle for a model boat for sale if you are after one.

The river levels are currently just the same as you would expect during the Summer months. Obviously there has been less rain than one would usually expect at this time of the year. The water is also very clear, I believe that it's clearer than it was during the Summer. I guess this is not good for the fishermen as the fish will see the bait and hook easier. I wonder if that's why they're not catching as many?

Over a period of time we noticed the smell of rotting fish flesh on the fuel pontoon, but we could not locate the source of the aroma. Eventually we found the reason. There was a dead pike under the wooden top of the pontoon, but on the top of one of the floats. It was most odd as a pike could not jump about a foot and a half and squeeze into the gap below the wooden walkway. We think it must have

been a mink, especially as the fish was half eaten. We believe that only a mink could capture a pike and drag it out of the water that high.

We are often asked our opinion of the US election result. Well to be honest we are a little bemused that their

campaign goes on so long and this time managed to come up with the two candidates that they did. The actual result is somewhat stranger.

Trump has been calling us for our expert advice on several points. We are not so sure about his security policy so we are sending our security expert, Rocky, over to give him some advice. For example is the Mexican wall to keep Mexicans out of the US or to keep the Americans out of Mexico? When Rocky, a person of few words, was asked about his job as a security advisor to Trump and specifically how difficult the job would be, he simply said it would be "wruuff".

It's the time of year when we have to ready ourselves for our financial year end and to prepare the renewal contracts for the boats on the moorings. The moorings are let out for 12 months at April 1 each year so it's important to get a hold of who is staying and who is leaving at the earliest opportunity.

Having established how many available moorings we may have come April 1 we then begin the process of consulting our waiting list. We are often asked how long our list is, but it depends on the size of boat and the suitability of the mooring to a particular boat, so I simply advise that the marinas at Harleyford, Bray and Windsor are only full as they are all waiting for a mooring at Bourne End. I like to think that is not far off the truth.

Well it's Christmas again so Matty, Chaos, Rocky and myself wish you all a very merry Christmas and a prosperous New Year. We will be holding our usual Gentleman's Luncheon Afternoon (ladies permitted) at the Black Lion for those of you who wish to join us. Full details will be published on our Facebook Page. For those of you who can't remember coming last year I would just like to say that you did, and you had a great time so come again this year!

Until the next time
Peter Osborne, Marina Manager

Little Star
0-4 Years
Live Music & Movement Sessions
@ Wooburn Green Children's Centre
@ Bourne End Library
Visit the website for more details.
www.littlestar.me.uk kath@littlestar.me.uk 07930 675 606

Classic Beauty
for
Beauty treatment from fully qualified and caring therapists
Using top quality products from Pridara Skin care, Caci non surgical facial and body treatment
Jessica manicure and pedicure
The unique and hygienic Phd waxing system
Open 9am until 8pm most nights
17a Sobo Mill, Wooburn Green Tel: 01628 850688

HOME PC HELP
• All PC/networking problems
• No callout charge
• No fix - no fee
• 35+ yrs experience
For friendly, personal advice call
01628 630096
or 0778811 3279
(7 days inc evenings)
www.homepchehelp.org

Colin's Garden Services
Tel: 07884 262871
Garden Services
Grass Cutting Maintenance Patios
Hedge Cutting Fencing Turfing

Bourne End Video Makers in the frame...



Film making course success

A teaching programme on basic film making, sponsored by Bourne End Video Makers and conducted over the last seven consecutive Monday evenings in the Target Room, has proved a great success.

The programme, which was fully subscribed, was developed and conducted by Algie Gray, a club member. Algie is a skilled film maker who identified the need for a basic programme to enable people with little or no experience to transform their video footage into a short film to tell a story.

The programme was equally helpful to those who had a story to tell but little idea of how to make it into a film worthy of showing to others.

Course member Mike Power said: "This was a very thorough introduction to film making. I particularly liked the combination of technical and artistic skills.

"In one session we spent the first half talking about the different types of lighting, and in the second we got the lights out and experimented with them.

"We collaborated in small groups to develop our own short videos and the five films were then presented during the last week of the course."

Roger Davies, chairman said the club was more than happy to support Algie in this endeavour as we all acknowledge the need for such a course and hope to attract more members as a result.

Consideration is being given to repeating the programme in the future and details will be highlighted in the club's web site www.bevm.co.uk.

Calling all story writers – see your story on the silver screen!

Bourne End Video Makers is looking for short stories capable of being developed into a film script for our next production.

We would like to collaborate with writers to develop a film script from a suitable short story.

To be considered, your story should be short and able to be filmed. Ideally it should entail no more than four characters, involve locations that are easily accessible and be dramatic, that is, the characters need to be active. Oh and it must be possible to film it on a limited budget.

If you would like to pursue this exciting opportunity to take your story into another medium the club would like to meet with you.

Please contact David Jarman, secretary, on 01494 712 441 or Roger Davies, chairman, on 07718 588 789.

POUND HOUSE PPG

Did you know that every GP practice in England is now required to have a Patient Participation Group (PPG)?

Pound House PPG is a group of volunteer patients who, while independent from, work in partnership with the practice staff and GPs.

We meet approximately every six weeks and feel that we have an important role in helping to give patients a say in the way services are delivered. Our role is part of the on-going communication between staff and patients at the surgery.

If you would like to know more, are interested in being an active member of the group, or wish to make any suggestions, please email poundhouseppg@gmail.com, or contact Pound House or Orchard surgery.

The Last Viceroy
Fully Licensed & Air Conditioned
Royal Indian Cuisine

The Last Viceroy INDIAN CUISINE

There is a wonderful selection of mouth-watering dishes on the comprehensive menu at The Last Viceroy. They include coconut lamb, apricot lamb and cashew nut chicken alongside starters, specialities, traditional Balti, Tandoori and Biryani dishes as well as delicious seafood and vegetarian choices. The friendly and attentive staff will advise you if you are unsure about any dishes on the extensive and varied menu. You can opt for the Khas-e-Viceroy at £24.95 per person where the chef will prepare a mixed starter, main dishes and side dishes with rice and bread. Or choose the chef's special dishes which are cooked with fresh ground spices and prepared by a slow cooking method to bring out the delicious flavours; six hours' notice is required for these meals. The restaurant is well-established, having opened 28 years ago. Its cuisine attracts regulars and newcomers alike and its striking interior is divided by floor-to-ceiling pillars, making The Last Viceroy an ideal venue for a cosy dinner for couples or large parties. Open for lunch, dinner and take-aways seven days a week.

FOOD HYGIENE RATING
5

74 The Parade, Bourne End SL8 5SS
01628 531383 / 530798
www.thelastviceroy.co.uk



Street Lighting in the Parish

We currently maintain 501 streetlights in the side roads of Wooburn and Bourne End while Bucks County Council maintains the streetlights on the main roads. You can report faulty main road streetlights to Bucks County Council via their website www.buckscouncil.gov.uk under the 'streets & transport' section or alternatively you can call them on 0845 230 2882.

Our contractor undertakes night patrols every two weeks from October 1 to March 31 (when the patrols drop to monthly) to check that all the lights are in working order.

They also inspect once a month during the day to look for lights that are on when they shouldn't be (day burners).

This can mean that lights do slip through the net between patrols so we welcome you calling the office to let us know that a light is out.

In order to make sure we are talking about the correct light we have put our lighting inventory on the parish council website

www.wooburnparish.gov.uk which means if you have access to a computer you can find your road on the list and note the light column number and location description before you call us.

Lights are usually repaired within five working days, but on occasion a supply fault is the problem and the light has to be referred to SSE for repair which can take up to six weeks.

Groundsmen

Our groundsmen Tom, Dick and Harry, oops, I mean Roland, Shane and Tom have been kept busy cutting grass and trimming hedges.

The mild Autumn has meant that the mowing season has had to be extended by a few weeks. Once the mowing has finished the lads can turn their attention to the jobs more suited to be done over the Winter period.

Winter jobs can include machine maintenance, tool cleaning, renovating wooden shelters at the allotments and in the cemetery, checking and fixing broken fencing, painting etc. There is always something to be getting on with.

The refurbished ponds are now completely finished. Farm Wood pond has been partly fenced to enable the plants to grow undisturbed and to facilitate this we would politely request that dog walkers don't allow their dogs to go in and out of the pond. The aim is to remove the fence when the plants are established.

Parish Benches

Bourne End residents will have noticed the disappearance and reappearance of the benches along The Parade.

As you may be aware the parish council agreed to take over responsibility for all the benches in the parish and has started a programme of checking each bench and repairing where required.

As this year's seating budget was limited it was decided to tackle the seats along The Parade as they are high profile within the village.

New slats were installed and the bench sides repainted. I think you will agree that they look as good as new.

The rest of the parish benches will be checked and repaired as and when funds allow.

Sensory Garden – Bourne End Library

Did you know that there is a Sensory Garden in the grounds of Bourne End Library? It was decided to turn the area into a sensory/chill out garden when it was being landscaped.

When Dr Kay Flanagan, whose garden at Claytons in Bourne End was used to build The Orchard Surgery, died a plaque was placed in the garden in her memory.

More recently, a fountain was installed in the memory of Gwen Thomas MBE who was a founder member of Wye Valley Volunteers.

The garden is open during library hours, but if the room leading to it is in use, visitors can access it via the Bourne End Care and Activity Centre. The librarians look on the garden as an outdoor reading room and hope it will be used by everyone who visits the library either to read their book or newspaper or just to relax while they have their lunch.

Short & Sweet

I don't know about you, but this year seems to have flown by and although this article is being written at the end of October, signs of Christmas have been seen in various shops, supermarkets and garden centres in the area for a few weeks now. As this is the last parish *Target* article for 2016 it only remains for all of us at the parish council to wish all our parishioners a very Merry Christmas and a very happy and peaceful New Year.

Meeting Dates 2016/2017:

Full Council: January 24, February 28
Open Spaces, Allotments and Burials
January 3, February 7
Planning, Highways & Lighting: November 30, December 21, January 11
F&GP: January 10, March 14
All meetings start at 7.30pm

Normal Parish Council Office opening hours are from 9am to 5pm each day. Please call 01628 522827 if you have any queries, alternatively email the office at clerk@wooburnparish.gov.uk or visit our website for information on www.wooburnparish.gov.uk



Bed and Breakfast
THE OLD COTTAGE
HEDSOR ROAD
BOURNE END
SL8 5EE
www.theoldcottagebourneend.co.uk
Tel: 01628 521348
Mobile: 07796 938369
stacey@theoldcottagebourneend.co.uk



MARTIN'S
Maintenance & Plumbing
Kitchens Bathrooms
Interior decorations
Carpentry & cabinetmaker
Mobile 07725059321
martinwhite26@aol.com



HAND MADE FURNITURE
Architectural woodwork, furniture, antique restoration, panelling, staircases, gilding, lettering, woodcarving, churchwork, sculpture, interior design and free advice.
LILLYFEE WOODCARVING STUDIO
Lillyfee Farm Lane, Wooburn Common, Bucks HP10 0LL
Tel: 01494 671690
Studio open for visits by appointment
WOODCARVING COURSES
Take a new direction and create beauty under the guidance of experts. Call the number above for dates and details.

Sick PC ?
Misbehaving Laptop?
Visiting support for your Computer problems.
'Silver-Surfer' & Saga generation, assistance & tutorials.
Jonathan - 01628 486712
www.ComputaSolv.co.uk
"Fixing your computer problems"



Up Narkover

Book review by Dave Foster

You could be excused from thinking that Up Narkover is about a minor public school or a 1930s Will Hay film. Actually it is a history of Wooburn Narkovians Cricket Club published in the club's 80th year.

With chapters covering each of the eight decades this book is full of history not just of the club, but of the people from Wooburn parish as well. For those who do not know, the Narks is the club that plays in Wooburn Park.

Written by Karen Savage with assistance from her father, Ken Townsend, the book benefits from contributions from countless Narks past and present.

The book runs from the times when players would cycle to the ground and then take one of Bill Smith's 'Pride of the Green' charabancs to away matches to the opening of the new pavilion in the park just a few years ago via countless overseas tours (OK actually to the Isle of Wight).

The book is packed with photographs, stories about the players and memorable games and anecdotes.

But is not just about a cricket club. You will read about 'Mac' Sheppard the club's founder secretary. If you did not know Mac you might have known his wife Ethel, a leading light in the Bourne End Flower Arranging Club or his brother, Ron ('Jock') who was the magic sponge at Wycombe Wanderers for many years: both are in there.

The book reaches beyond the club and into the local community. Read about Pink Floyd playing at Wooburn, the Narks playing cricket against Wycombe Wanderers and how, if the Narks had not been running a 3rd XI in the 1970s, The Wurzels would not have had their No 1 hit with *Combine Harvester* (yes really!).

My most personal memory from the book was from 1986 when I scored for the club at Lords. I had forgotten the score book so I returned to the ground behind the pavilion as the light was beginning to fade. Realising there was no one around I entered the pitch beside the pavilion and walked out across the middle following in the footsteps of Bradman, Hutton, Hammond, Hobbs and so many other great batsmen.

It was an eerie feeling, you could almost hear the roar of the crowd. This is just one example of many personal stories through the decades from before the First World War right up to the present day.

And so to the title *Up Narkover* and that name Narkovians, public school or Will Hay? Well actually a bit of both. The book reveals the full fascinating story.

Up Narkover is written and published by Karen Savage. 210 pages fully illustrated. Priced £15 with all proceeds going to Wooburn Narkovians Cricket Club. Available by phoning 01628 529216 or emailing upnarkover@targetmagazine.org.uk

Top: Team photo from the Narks match at Lords in 1986 with Dave Foster far right



Aztec heating and plumbing

Repairs to all Gas Boilers & Servicing Contracts

Also General Plumbing Repairs

Central Heating, Pumps, Valves, Timers & Programmers

Tel: (01494) 440219 home

Tel: 07973 439781 mobile

Tel: 07831 563477 mobile

SAMSON WINDOWS & DOORS

Designed to look good for a very long time



www.samsonwindows.co.uk

Tel: 01628 524469

We have been in continuous trading within the local community for over 25 years. We supply and install a range of market leading windows and doors manufactured to exacting standards of quality and performance and installed to the highest levels of finish and workmanship. More than 76% of our work is secured by referral and recommendation.

We do not believe in the hard sell, nor do we offer discounts for quick decisions. Our quotation is offered without obligation and discussed without insulting your intelligence. You will find it extremely competitive.



- o A Rated PVCu windows and doors
- o Timber alternative woodgrain windows
- o Authentic style sliding sash windows
- o Composite entrance doors



AS GOOD AS NEW



Mobile Bodywork Repairs

DAMAGED YOUR CAR?
Scuffs, Scratches & Dents

Call Malcolm now for a free quotation!

Office: 01628 532586 Mobile: 07786 482262

Bourne End Cards & Gifts



To all our neighbours,
friends and fellow
"Bourne-Endians" -
For Christmas
and the coming
New Year,
may there
always
be a
Guardian
angel
watching
over you
and your
family.

Thank you for
your continued
support

Dilly's ditty



"Our village
will only
continue to
thrive,
If you shop
local and keep
us alive"

19 The Parade, Bourne End, Bucks SL8 5SB
Telephone: 01628 521509
Email: tony@bowlerwright.co.uk



WIN! Lunch for two at Sindhu

As a special Christmas issue treat you could win a three course lunch for two at Michelin-starred chef, Atul Kochhar's Sindhu restaurant at The Compleat Angler.

Target has joined up with **Virgin Experience Days** (whose head office is in Bourne End) to give you the chance to win this fabulous prize.

The winner and their pal or partner will enjoy a three course lunch at the fabulous restaurant, a glass of Prosecco each and a souvenir signed menu.

For your chance to win simply answer the following question and send your answer, with your contact details, on a postcard or on the back of an envelope to Target competition, Bourne End Community Centre, Wakeman Road, Bourne End SL8 5SX. Or you can drop off your entry at the centre. Closing date December 30.

Q: In what country was Atul Kochhar born?



The Macdonald Compleat Angler is the quintessential English country hotel, with an equally English view: the River Thames, a tall spired church and a 19th century suspension bridge. The hotel took a decidedly sunnier turn when Britain's first Michelin Starred Indian Chef, Atul Kochhar, opened his Sindhu restaurant there in early 2015.

Atul and his team create exquisite food using spices from many corners of his native India, combined with British dishes and ingredients.

This unassuming chef is credited with changing the public perceptions to Indian food, although when he arrived from India, in 1994, he was pleasantly surprised to see how the British had adopted his homeland cuisine. By 2001 he had his first Michelin Star and since then he has become synonymous with innovative Indian based cooking, through television, numerous books, and another prized star.

As well as Sindhu in Marlow, he has the two Michelin Star restaurant Benares in Mayfair, Sindhu restaurants in Dublin, Dubai and Madrid, as well as on board two P&O cruise ships.

Dining at Sindhu in Marlow is quite an experience. The competition winner will be able to choose three courses from the day's lunch menu, tucking into the likes of crispy fried squid, delicious homemade chutneys, home-style curry and desserts including tandoori pineapple.

The menu is incredibly sophisticated — designed to celebrate the very best of cuisine from the south west coast of India in a contemporary manner. But it is not a scary one.

Most of us grew up knowing and loving some Indian dishes and this menu cleverly incorporates some classic familiar favourites with a modern twist, alongside some radically new flavour combinations. If you want hot and spicy, it is here, but if you want subtle and mild it is also here.

Ts & Cs

- Minimum age: 18 • One entry per person
- The lunch is available Monday to Friday from midday to 2.15pm. Date restrictions may apply. Once you have received your prize voucher we recommend you book well in advance to ensure that dates are available. All bookings are subject to availability.
- Additional drinks/dishes will need to be paid for separately. Please let the restaurant know of any dietary requirements at the time of booking.

Virgin Experience Days offer a massive range of packaged days out and one-off experiences via their website www.virginexperiencedays.co.uk You'll find gifts for every occasion and person on there.





Upper Thames Sailing Club

report by Debbie Kite

We go into the Winter season after a very busy sailing year having held two successful Open meeting weekends when we welcomed sailors from all over the country to race on the river.

In September the Merlin Rocket class held their 70th anniversary celebrations at the club over the Open weekend. The Merlin Rocket class is thriving nationally and here at the sailing club. It is a two-person boat, described as the 'ultimate hiking dinghy' and the design has developed from a traditional clinker built wooden river dinghy in 1946 to the newest boats using the latest technology of resin and foam construction with carbon fibre masts.

However in light winds on restricted waters such as The Thames, the older narrower traditional designs can often beat the modern boats, and in fact some enthusiasts own both types. The boat performs well with a mixed weight crew so is frequently sailed by couples or parent-child combinations, which makes it a very social class.

We were delighted to welcome 'Kate', Merlin number 1, launched in 1946, along with a selection of national championship winners for a Champion of Champions race. Despite poor weather it was a fantastic reunion and party. Many sailing club crews participated and did well against national level competition.

The Open meeting for Wayfarers and Oks followed in October. Wayfarers are slightly larger and more stable than Merlin Rockets and Ok dinghies are single-handers with a single sail. There was a good turnout and an excellent supper and party on the Saturday night.

Sailing continues on Sundays now throughout Winter, weather permitting, alongside power boat training. New members are always welcome, social or sailing, go to www.utsc.org.uk, or call in during Sunday sailing.



Bourne End Junior Sports Club

WE NEED VOLUNTEERS!

Since 1970 BEJSC has been providing generations of children and young adults with an avenue to explore sport and team leadership. We still offer eight different sports for ages six to 18+ years in our purpose-built Sports Hall in New Road, plus other venues.

We understand how busy modern life can be (we're human too) but to continue this ethos, the Board of Trustees is looking for members of the local community to step forward and volunteer a small amount of their time to help a wide variety of areas of the club.

Contact the BEJSC office (01628 528110) if you are interested.



BEJSC Sports Hall, New Road, Bourne End SL8 5BW
Registered Charity No 266590



CROWDEN

• COACHWORKS LTD •



- Car Body Repairs •
 - Garage Services •
 - Accident Repair Services •
 - Insurance Repairs •
 - Paint Spraying & Much More •
- We repair all makes and models and also deal with all insurance companies**

5A The Green, Wooburn Green, High Wycombe, Bucks HP10 0EE

Tel 01628 526463

www.crowdencoachworks.co.uk

Support your local craftsmen and traders

Creative quilting at the centre

Colourful stitching skills were in abundance from members of the Quilters Guild at their Autumn Regional Day. This year's event was held in the main hall at the community centre and they were delighted with the premises. Hopefully they will be back – along with their amazing quilts.

Jan Hassard opened proceedings with a huge array of quilts – some old and some new – with her accompanying talk on *Colour and Illusion*. With the aid of two helpers she showed everything from very old patchwork quilts to modern creations that were cleverly stitched to complicated patterns.

It was good to see some old quilts in hand-stitched patchwork that dated back to wartime when evacuated children were given a quilt when sent away from their family. Jan admitted that she had an old patchwork quilt that was thrown out after the war. "I still feel guilty about it" she said.

Hot drinks and homemade cakes were available courtesy of Spectrum Quilters and Chiltern Quilters. During the lunch break there was a chance to visit various stalls and in the afternoon there was a talk from Angela Daymond on *Natural Dyeing* which inspired many of the stitchers.

It was a lovely day at the centre and one we hope will be repeated as the seasons roll on. Look out for the posters and sign up if you are interested. But, beware, it can become addictive.

If you want to find out more visit the Quilters Guild website for a local group at www.quilternguild.org.uk

- Patchwork is stitching together of fabric pieces in a pattern, either by hand or machine,
- Quilting is stitching together of completed patchwork over a layer of wadding and a piece of backing fabric.



Here Jan Hassard shows off a quilt during her talk and right, some fine examples on show

OPEN
new
faces
for
spaces
in
Bourne
End
village



Great to see Bourne End premises that once were empty, now open and ready for business. After all the talk about empty shops The Parade now has something new to offer. First to throw wide its doors was a new **Beauty and Blow Dry Studio** which opened with a bang on November 5. Next will be **Bourne for Desserts** offering ices, cakes, teas and lots more just in time for Christmas and a haven for those with a sweet tooth!

Down on Royalty Parade the little **Café Italia**, serving snacks and drinks, has opened where Darlings used to be.

And the **Co-op** have told **Target** that they will be opening in Blyton House about the middle of December and a Turkish restaurant is promised where the old Co-op used to be. Watch this space!



BOURNE END MOTOR COMPANY

Bourne End Motor Company was established in 1994 and in that time we have built a reputation for offering the personal and professional approach normally only found in the more prestigious franchised dealerships.

We have become recognised as one of the leading specialists in low mileage, privately owned cars with full service history. Most of these cars are between six months and four years old. As well as your regular family cars in, Ford, Vauxhall, Fiat, Mini etc, we also sell luxury brands such as BMW, Mercedes.

Over the years we have built up a vast range of suppliers and through these we can source almost any make and model of car, all of which offer a significant saving than those offered by the larger Franchised Main Dealers whilst still matching their standards.



- Local Family Business
- All Cars HPI Checked with Service History
- Computerised Stock Locator System
- Most Makes/Models available
- At least six months Warranty on all vehicles

TEL: 01628 533 222
WWW.BEMC.CO.UK

WAKEMAN ROAD • BOURNE END • BUCKINGHAMSHIRE • SL8 5SX • TEL: 01628 533 222 • FAX: 01628 530 264



Were you a Jubilee cub in 1988?

That's 28 years ago and any cub will now be a man in his thirties. What satisfaction when they see this new seat outside Blyton House on Marlow Road complete with a dedication that bridges 28 years.

For years their seat was close to the bus stop on the Marlow Road with a message that it had been donated by Jubilee Cubs. When the site was sold and redeveloped the old seat had to go. However McCarthy & Stone said that a new seat would be provided, with a message remembering those cubs. It's there now, close to the bus stop, and it looks great. And the plaque remembers those cubs from 1988.

Do get in touch with Target's editor (contact details page 2) if you were a Jubilee cub back then and we'll arrange a photoshoot on the bench!



BOURNE END & HENLEY SECURITY SYSTEMS LTD



*Your local security expert
FREE survey - Contact us today*

DOMESTIC & COMMERCIAL INTRUDER ALARMS
CCTV INTERCOMS SECURITY LIGHTING
FIRE ALARMS

- Local privately owned company
- SSAIB insurance approved
- No binding contracts
- Existing systems maintained & repaired
- 20 plus years of experience
- NACOSS NSI Gold monitoring

1 Marina Office, Harleyford Estate, Henley Road, Marlow, Bucks SL7 2DX
Tel: 01628 520162 or 01491 521541 www.behss.co.uk



No. 25

**Specialists for
Mother of the
Bride/Groom,
Ascot, special
occasion and
cruise wear.
Accessories
too...**

25 The Parade, Bourne End,
Bucks SL8 5SB

Tel: 01628 528877

Open Monday to Saturday
9.30am to 5pm

See website for Sunday Open Days

www.No25ofBourneEnd.co.uk

Solicitors Buchanans

**Divorce | Conveyancing | Commercial | Employment |
Wills | Probate | Litigation | Elderly Client**

Buchanans Solicitors can assist with all the above and more.

Buchanans Solicitors is a friendly, modern law firm which offers a broad range of services and aims to deliver clear advice promptly and cost effectively.

Call us for a free, no obligations chat on 01628 810 707

Swains House, Swains Lane, Flackwell Heath, Buckinghamshire HP10 9BN
office@buchanansonline.com
www.buchanansonline.com



Authorised and regulated by the Solicitors Regulation Authority (No. 00409168)



Little Marlow Parish Council

By Emma Marsden, parish clerk

Two new green paths are in place

We are delighted that two new green paths have been completed. The first one is on the C100 (Wycombe Road) from the Rebellion Brewery to Pump Lane North. This is a notoriously busy road with no safe area for pedestrians to walk. The new path is made with bark chippings to reflect the rural nature of the area.

Sheepridge Lane also has had the final part completed from the roundabout on Marlow Road to the rear entrance of Fern Lane Cemetery. There is now a safe path for parishioners to walk from Well End to Flackwell Heath.

Little Marlow Parish Council would like to thank Wycombe District Council for their financial assistance which enabled these two paths to be completed.

Street Lights – Little Marlow parish

Winter nights invariably mean that parishioners notice the street lights and more importantly if they are working or not. Little Marlow Parish Council is responsible for a number of street lights around the parish – in Winchbottom Lane, Coldmoorholm Lane, Wendover Road, Burroughs Crescent, Church Road to name but a few.

All Little Marlow street lights have a LM stamp and a number. Should parishioners see a light which is not working correctly, please could they call the clerk with the number of the street light and its location.

The council has a maintenance contract with SSE and it should take approximately 10 days for the repair to take place. This of course relies on the fault being repairable on site and without the need to order new parts.

The reality is that the street lights are getting old and some of the parts are now obsolete. This does cause delays as the new parts are ordered and we understand that parishioners do find this frustrating. Repairs also can be delayed if there are cars parked in the vicinity of the street light and the engineers can't get access to the faulty light.

So how do we make improvements? The council has resolved to replace all obsolete equipment on a case by case basis. This year we have replaced two entire street lights in Winchbottom Lane and put new lanterns on some in Wendover Road and Burroughs Crescent.

The council has also recently undertaken a 'tree prune' on the street lights which have been covered by overgrown branches. The contract for maintenance of our lights is due to be renewed next

year, so we are actively looking at ways we can improve the service to our parishioners.

Allotments – Chapman Lane

There has been extensive clearance work on the allotment site in Chapman Lane. We have a number of plots available for rent. There is a choice of allotment sizes of which some have mature fruit trees and bushes. Many plots do require quite a bit of work to get them established. There is a lovely community spirit at the allotments and some tenants having been successfully growing produce there for many years. Contact the clerk if you would like more information.

Fern Lane Cemetery

There have been some improvements to Fern Lane Cemetery. A new entrance sign is now in place and hopefully this will make it easier for people to locate the cemetery when driving in Fern Lane.

There have been repairs and improvements to the path by the grave sides and on the road leading into the cemetery itself.

The annual cemetery spruce up is on Saturday December 3 and we ask for volunteers to come and

assist councillors. This is from 10am to 1pm. Tea, coffee and light refreshments will be available. We would ask that all volunteers bring and be responsible for their own equipment.

Budgets 2017/18

This is the time of year which the council decides its budget and precept for the 2017/18 financial year. There are a number of projects which the council has earmarked in its 2017 /18 Action Plan. This includes some refurbishment of The Pavilion and Abbotsbrook Hall. Should you have any projects to be considered please contact the clerk before the Tuesday December 6 meeting.

Change of venue and future meetings

The council meeting on December 6 will be held at Abbotsbrook Hall, Marlow Road, Well End not at the normal venue of The Pavilion.

Budget Meeting January 11 at 1pm, Parish Council Meeting January 17 at 8pm.

Merry Christmas and a Happy New Year to all Target readers.

Little Marlow Parish Council, The Pavilion, Church Road, Little Marlow, Bucks SL7 3RS
www.littlemarlowparishcouncil.org.uk
Tel: 01628 890301 Office opening hours: Tues, Wed, Fri 9.30am to 1.30pm.



Virgin
EXPERIENCE
DAYS

what memories will you create this Christmas?

enjoy 20% discount* at

virginexperiencedays.co.uk



enter code

MATES20

at checkout

*Discount applies to full price products and not to special offers, our excluded products list or tangible range

Graham Blake
soft furnishing

- Loose covers
- Curtains
- Re-Upholstery
- Tracks & Poles

TEN YEAR GUARANTEE

For personal, helpful service, please call

Tel: 01844 261769

Mob: 07802 213381

grahamblake123@btconnect.com

www.grahamblake.com



ACORNE
FIRE

also the home of...

Virgin
GIFT CARD

Virgin
VOUCHER

LeisureVouchers



Calling all musicians...

Your friendly local orchestra is looking for string players and bassoon players (other instrumentalists are welcome to apply).

Marlow Orchestra performs in and around the Marlow area several times a year. They hold weekly rehearsals in a local church, on Thursday evenings from 7.30pm to 9pm during term-time, as well as social events.

If you are interested in finding out more, please contact Tom Horn, the musical director on horn_tom@hotmail.co.uk or marlow.orchestra@yahoo.com

The Marlow Orchestra will be performing at the Christmas Fair at the Crowne Plaza Hotel, Marlow from midday on Sunday November 27.

Adam goes all out for win!

Adam Elder is always happy when he's racing cars. In Greece recently he was surrounded by the top names in Gymkhana Grid events and together they were competing to be European Champion. It was a wild, noisy, exciting, high-octane few days for the Bourne End boy *Target* featured in the last issue.

On hand throughout the championship was his dad, Tony Elder of Bourne End Motor Company, as chief mechanic ready to do whatever was necessary. Cheering him on were the rest of the family and girlfriend Lindsey. They had all seen Adam race before and they knew how seriously he takes his sport.

Having achieved the fastest lap it was neck-and-neck in the final races deciding the championship. Adam won and then was second in the race-off. There was just a second in it, but it was the difference between the top prize and coming second. And for Adam it was his third time of coming second in this major championship. Sorry Adam.

Always ready with a smile Adam admitted that it was an amazing experience but says: "I'm never happy if I'm not on the top step. The car was awesome, the team was awesome and the event was awesome".

For team 1340 the preparation for 2017 started in mid-November. Before then it was off to Scotland to the Scottish drift championship final at Knockhill in Dunfermline.

Gymkhana Grid has become the dream with Adam ready to take on anyone in his modified road car and competing again serious grid motors designed for competitions.





HALL PLACE
VETERINARY CENTRE

61-63 The Parade
Bourne End
Bucks, SL8 5SB
01628 525274
www.hallplaceveterinarycentre.co.uk

<p>94 Little Marlow Road Marlow Buckinghamshire SL7 1HG 01628 483062</p>	<p>Lee Farm, Lee Lane Pinkneys Green Berkshire SL6 6PE 01628 622086</p>	<p>1A Dodds Corner Stokenchurch Buckinghamshire HP14 3RZ 01494 485855</p>
--	---	---

SMALL ANIMAL CONSULTATIONS BY APPOINTMENT
24 Hour Emergency - 01628 622086

Woodworking Classes

"A great Christmas Present!"



Beginners or Intermediate Classes

for more information please call
01628 290 770
or visit
www.thewooburncraftschool.com



PT CARPENTRY

and Household Services

Design • Repair • Rebuild - just ask

Paul Thomas

Mobile : 07905 221991 E mail : ptcarpentry@live.co.uk
Carpentry - Plumbing - Plastering - Decorating - Gardening
(sub contract electrical services)


Carpentry design and repairs, bespoke furniture made to order, erecting sheds, stables, fencing, trellis, garden gates, assembling flat pack furniture, hanging doors, changing locks & door furniture, fitting security locks to doors and windows, boarding out lofts & installing loft ladders, plumbing in sinks, installing washing machines, kitchen and bathroom fitting, changing taps, tiling, grouting, putting up shelves, pictures, mirrors & curtain poles, clearing and repairing gutters, landscaping, general garden tidying, pressure washing patios, project management.....

the list goes on and on!.....

"To do the jobs that you don't have time to do!"

Mobile : 07905 221991 E mail : ptcarpentry@live.co.uk

Bourne End Electrical



All your electrical needs catered for

Quick and efficient service

Test & Certification
New Fuse Boards
Upgrades & Repairs
Interior & Exterior wiring
Outside Security Lights
Switches & Outlets

Ring Stephen on
01628 850968
07790 546975

JAMIE'S TOURS

Picking up at a location near you!

**CHRISTMAS SHOPPING IN
KNIGHTSBRIDGE
WITH SUPPER AND THE LIGHTS**
Saturday 10 December £28.50

**NOW INTO 2017
MYSTERY COASTAL TOUR**
Wednesday 11 January
£21.50 (see the sea in its Winter coat)

**SHORT BREAK HOLIDAYS GALORE
WHY NOT TRY –**
The Trouville Hotel, Isle of Wight
Monday 13 – Friday 17 March
£275 per person (two sharing)

EASTER IN EASTBOURNE
at the Queens Hotel
Wednesday 12 – Sunday 16 April
£240.50 per person (two sharing)

2017 holiday list now available, phone Jamie

Phone or email Jamie with your details to go on the mailing list for all trips and holidays
www.jamiestours.com

Ring 01494 416500 Mob 07714583215
or email jamiefyfe2@gmail.com



Brittons Solicitors
28 The Parade
Bourne End
Bucks SL8 5SY

Friendly, helpful, professional,
efficient and cost effective legal
service.

We look after you.

Telephone: 01628 533350
Fax: 01628 533119
Email: lex@brittonsol.co.uk

V J CLEANING

**ALL HOUSES & BUSINESS
PREMISES CLEANED
TO THE HIGHEST STANDARD**

**REGULAR WEEKLY CLEANS
OR ONE-OFF DEEP CLEANS.**
**WE CAN WORK HOURS TO SUIT YOU,
HOWEVER BIG OR SMALL.**

**FOR A FREE, NO OBLIGATION,
QUOTATION**

**CALL US NOW ON
07869 127508 OR
01628 527891**

The Queen's message to Daisy

When Daisy Potter and three friends watched the celebrations for HM the Queen's 90th birthday they had a cuppa and then a sherry. "It seemed right to raise a glass to her" Daisy told *Target*.

It was then she decided to write to Her Majesty and say how lovely and happy she looked. Daisy added how supportive Prince Philip was adding "I will be 96 next February and so beat him by a few months."

Out of the blue a letter arrived from a Lady-in-Waiting to the Queen containing greetings and a photo. The letter thanked Daisy for the enthusiastic comments, wished her well for her birthday in February and said that Prince Philip was looking forward to his in June. "I have never written a letter to anyone so important before," Daisy smiled, "and to get a reply with the royal insignia was wonderful."

Daisy moved to Bourne End 39 years ago as her husband, Reg, loved the area. Now widowed she has the support of good neighbours and Wye Valley Volunteers. "I couldn't manage without their support," she said seriously, "it is such a good place to live and people are lovely." Daisy enjoys Link Up at Cores End Church every fortnight, the soup lunch in Wooburn and musical events at the community centre. Now she is looking forward to a family Christmas with her six great grandchildren.



**am ANDREW
MILSOM**

Merry Christmas and a happy new
year from all at Andrew Milsom's

If you are thinking of moving in 2017
please do not hesitate to contact your
local office or visit

01628 523310

andrewmilsom.co.uk

lettings@andrewmilsom.co.uk

bourne end dental



Our exceptional levels of expertise and our team approach to caring means Bourne End Dental has been at the forefront of general practice for more than 20 years.

- ❖ Considerate dentistry in a caring environment
- ❖ Superb clinicians with a family focus
- ❖ Early morning & Saturday appointments
- ❖ Specialists in gum therapy, root canal treatment & braces
- ❖ Cosmetic dentistry & whitening
- ❖ Dental implants & facial aesthetics

**Protecting, renewing and enhancing the lifelong
dental care of our patients**

01628 523 353

Station Road, Bourne End, Bucks, SL8 5QF



www.bourneendental.co.uk

Celebrating decades

90 is a good age

Ninety is a good age to celebrate especially when your family and friends come along to raise a glass with you.

For Harry Lockwood it wasn't a huge celebration, but it was very special as he recognised friends from the past. His sister Marjorie sees him every day but this time she brought Avril from the Bourne End Community Centre bar and a photographer from Target.

They were just in time to take Harry out in his wheelchair for a breath of fresh air with Marjorie and Avril taking it in turns to push. Avril was delighted to see Harry looking so well and happy at the nursing home behind St Mark's Hospital in Maidenhead. "I am so pleased," said Avril "he's really settled and the staff are lovely." Then it was party time.

Staff from the nursing home had decorated a room with lots of 90s balloons and Happy Birthday banners. Harry had masses of cards and people arrived to offer their good wishes for his special day.

Then sailing friends turned up, having had a dreadful journey, and Harry's day was complete. Finally, with Avril's help he cut the birthday cake and shared it out.



Everyone in the centre bar remembers Harry, his mobility scooter and his wealth of knowledge. They signed a card for him and were delighted to hear from Avril that he was doing so well. His sister Marjorie was relieved that it had been a wonderful celebration.

100 is a perfect number

Her reaching the grand age of 100 has come as no surprise to many of Elsie Clover's friends. They all believed that she would make it with the same dignity and style she had always shown since moving down to Bourne End from Sheffield in 1999.

Having nursed her husband for three years until his death in 1998 it seemed right to make the move and be closer to daughters Susan and Marilyn. A flat in Ray House meant she could reach shops, doctors and church easily.

Life for Elsie had been drastically affected when her father was killed in the First World War. Her mother received nineteen shillings – that's old money – each week to keep them both. Their greatest asset was a large, extended family who included Elsie and her mother in all their activities.

"In those days people used to invite you for tea and it was a huge meal," Elsie said. "I had lots of cousins to play with as well as uncles and aunts to be there for my growing up."

Elsie left school at 14 and worked in an office. She attended night school and became a skilled dressmaker. Those skills stayed with her through marriage and motherhood as she made clothes for the family and herself. Social life revolved around the John Street

Methodist Church where, at 18, she met Arthur and they married in 1937. They bought their first house and stayed there for 61 years.

During the Second World War Arthur was in the fire brigade then conscripted into the Army as a wireless operator. He saw action in France, Belgium and Germany. After the war he returned to his trade as a builder until he retired aged 66. They had numerous friends

and were keen ballroom dancers.

Daughters Susan and Marilyn came along in the 1940s. Both girls remember their caravanning days when the family travelled all over this country and throughout Europe with their caravan.

Arthur had a stroke when he was 83 and Elsie was his constant nurse for three years before his death. So then it was time for a move. Once in Bourne End it wasn't long before Elsie started attending St Mark's Church, joining the Townswomens' Guild, Women's Fellowship and the Trefoil Guild. She loved being a part of all they did. Elsie was a familiar face in the shops, library and community centre.

At 98 Elsie had a stroke which left her with limited mobility and meant a move into Burnham Lodge nursing home. There she will celebrate her birthday with the family including three granddaughters and two grandsons as well as eight great grandchildren. Years of memories so perhaps some words of wisdom on reaching 100. Elsie smiled and emphatically said with her usual dignity "No". Exactly, getting there is the achievement.



Cutting Edge

All in one
hair
beauty
&
barber shop

**NEW
Tanning
Studio**

t. 01628 526070
www.cuttingedgewooburn.co.uk
49 The Green, Wooburn Green HP10 2TU

BY APPOINTMENT TO
H.M. QUEEN ELIZABETH II
HEATING & PLUMBING ENGINEERS
S.A. BOILER SERVICES

RS Boiler Services

Gas • Oil • Heating
Plumbing • Electrical
L.P.G. Specialists • Propane • Butane

TEL: MARLOW (01628) 483099 FAX: (01628) 476843

CORGI
Reg No 62

Every once in a while - take the scenic route

TAKE YOUR TARGET!

A little blast of Tenerife sunshine comes courtesy of John Eastwood from Furlong Road, Bourne End.

John wrote: "I am originally from Yorkshire, but decided it was a lot nicer down here, so my partner Lynda and I upped sticks and moved to Bourne End eight years ago. I have found that there is no north and south divide around these parts. We have been welcomed by everybody."

He adds "If you are passing Graphic Arts Supplies at the back of Bourne End Motors give me a wave."

The photo was taken on holiday in El Medano, Tenerife.



Don't forget to **TAKE YOUR TARGET** on your travels and send us your pictures!

A more dramatic backdrop from Trevor Wild (top right).

He sent in his photo taken on a walking holiday with friends and wrote: "I have not long moved into Sycamore Close in Bourne End and been enjoying reading your magazine. I saw the bit about taking your *Target* before going on a trip to climb Ben Nevis in Scotland and thought it would be a great place for a photo."

And indeed it was! The photo shows Trevor at the highest point in the UK with his *Target*. Who knew we could reach such heights!



Big band magic

Outside there were bangs, pops and whizzes while inside all was calm and ready for the Sound Force big band and their music. That was the scene at the community centre on Bonfire Night and it certainly sparkled – just like the magic outside.

Everyone in the audience knew the music and the songs. It was nostalgia all the way from a band of talented musicians and their vocalists Lea Lyle and Mick Emblow.

Singing along was no problem while making the effort to dance took a little more time. It was a great night for enthusiasts who hanker after the swing era.

At the interval, as a change from the usual picnic, there was a delicious cold buffet while the raffle was drawn.

Then on to part two with the swinging style of the Glenn Miller orchestra.

Feet tapped, fingers drummed and the era of swing was right there – and no one noticed the bangs, pops or whizzes outside.



Your local Drycleaners at your service

Regular Discounts

Follow us on Facebook and Twitter, or sign up on our website for regular promotions and discounts.



BLUE DRAGON
LAUNDRY & DRY CLEANING



Regular discounts
www.bluedragondrycleaning.co.uk

Pop into your local Blue Dragon at 62 The Parade, Bourne End for a full range of drycleaning and domestic laundry services, including our *super speedy 2 hour and same day drycleaning options*. We can even take care of your repairs and alterations.

Branches also at: Beaconsfield, Gerrards Cross, Great Missenden and Ickenham.

<p>Your Bourne End Blue Dragon</p> <p>62 The Parade, Bourne End, Bucks. SL8 5SB Tel: 01628 522358</p>	<p>Opening Hours</p> <p>Monday - Friday: 8.00am to 5.30pm Saturday: 8.00am to 4.00pm Sunday: Closed</p>	<p>It pays to use Blue Dragon</p> <div style="display: flex; justify-content: space-around;">  <p>Pure Care</p>  </div>
--	--	--



BOURNE END JUNIOR SPORTS CLUB

NEWSLETTER

Founded in 1970 Bourne End Junior Sports Club is a registered charity run by volunteers to provide sport and recreation for children and young people, with many being highly qualified in their own sport. The New Road Sports Hall was built in 1982 and later extended to include a climbing wall and a club room. The multi-sport centre is used extensively by club members and members of the whole community. Please visit our website for more information www.bejsc.co.uk

FOOTBALL NEWS - U10s and U8s

The season for both teams started in early September with several fixtures being played in gloriously unseasonal warm sun. The U10s have had a large influx of players allowing it to go to two teams for the first time ever.

New players are always welcome with training at Wooburn Park on Saturday mornings and matches usually on Sunday mornings either at the park or away at our opponents who could be anywhere in the South Bucks region. The U10s have won all their matches conceding only one goal in more than two hours of football.

The U8s have been playing equally well using a squad rotation system to allow as many members to play as possible. There have of course been wins, draws and defeats, but all games have been played in excellent spirit and with huge amounts of enthusiasm.

We have recently invested in four metal goals instead of using the plastic ones which were not only a mind-blowing jigsaw puzzle sometimes, but also horrible to put up and down on cold wet windy Sunday mornings.

They really tested the patience and motivation of even the most hardened parents volunteering their support.

Both teams welcome new players with open arms regardless of whether they are playing for the first time and trying football out or have been playing regularly and want to find a club to play competitive matches.

The Football Section welcomes new players to join the club at all age groups (U5s to U21s), especially our U9s, U16s and U18s squads, so if you are interested in joining BEJSC or interested in supporting 'Sportsfest'24, please contact Ken Murphy on 01628 525359 or via the 'contact us' option on our website www.bejsc-football.co.uk.



SHORTLISTED NOMINEE LIZ HUTTON

The club's Liz Hutton, (right) who compiles this page for *Target* was recently shortlisted for two prestigious awards. She writes:

I feel very proud to have been nominated for two awards in recognition of my 40 years of volunteering for the sports club, and amazingly, I have been shortlisted for both. The first was the Lifetime Achievement Award the result of which was announced on November 3 when the Wycombe District Sports Awards were presented.

The second is for Unsung Hero of the Year 2016 which will be announced at the Bucks and MK Sport Awards later in November at the Aylesbury Waterside Theatre. For both awards I was one of three shortlisted nominees.

Special guests at the Wycombe event included Ian Rose, Judo Paralympian, and Ed McKeever, Sprint Kayaking Olympian. Both have been to the club to present our awards – Ian in 2006 and Ed in 2013. While not being the winner of this award I feel very privileged to have reached the final three from all the



worthy nominations.

Volunteering isn't about being recognised and rewarded, although I am very pleased to have been recognised in this way. I have gained so much from my involvement with the club, gaining many good friends and a huge range of skills.

Thank you sincerely to all those who have supported me over the years.

The unexpected addition to the Aylesbury event is Sir Steve Redgrave who is

to be inducted into the Bucks and Milton Keynes Sporting Hall of Fame.

Sir Steve has been our Honorary President since he opened our Sports Hall extension in 1998. I feel extremely honoured to be among such exceptional guests on both occasions.

SPORTS ON OFFER TO CLUB MEMBERS

If you have any questions please email office@bejsc.co.uk.

ALSO AT BEJSC...

Climbing Parties

Did you know you can book a climbing party at our Sports Hall? We cater for ages six and over; participants need no experience as they will be guided by instructors. Call 01628 528110 for details or e-mail office@bejsc.co.uk. Visit our website www.bejsc.co.uk for more information.

Classes for adults - Pilates class is on Thursday evenings from 6.30 to 7.30pm. This gentle form of exercise is suitable for all ages. The following classes are also held at the Sports Hall - Monday fitball 9.30 to 10.30am; Tuesday 4 to 4.45pm stretch class.

Treatment Room - for all your aches, pains, and injuries at The Sport Massage Clinic contact Wendy 01628 528226. Acupuncture available with Ray Siberini 07748 968762, www.acupuncture-balance.co.uk

**For information on clubs using our premises please contact the sports hall www.bejsc.co.uk
email: office@bejsc.co.uk. Chairman Matt Todd 01628 528110 Editor: Liz Hutton 01628 478168
Manager: Pete Sherwood 01628 528110 mobile 07710 132424
Sports Hall: (answerphone) 01628 528110**

Need an Electrician?



SELLECK ELECTRIC
ELECTRICAL CONTRACTORS AND TESTING SPECIALISTS

S.D. & R.A. Selleck
Electrical Installations Ltd.
3 The Green, Wooburn Green, High Wycombe,
Buckinghamshire, HP10 0EE

Tel: **01628 525278**
Fax: **01628 810373**
www.sellecks.co.uk

Wooburn Wheels
Service & Repairs, Children's Bikes, Adult Cycles,
Good Selection of Accessories.

Tools, Appliances & Accessories
COMPETITIVELY PRICED: Kettles, Irons,
Toasters, Hair Dryers, Coffee-Makers, Shavers,
Fryers, Lamps, Cable by the metre, Hoover Bags,
Plugs, Lampholders etc.

N.I.C.E.I.C. Approved
Portable Appliance Testing
All electrical installations and
rewiring undertaken.

Peter Moys
Local handyman
01628 529714

No job too large or too small
Reasonable rates agreed prior to the work
peter.moys@yahoo.co.uk

Mobile: 07502 305 894

No VAT charges on labour
Fully insured | Free estimates

Established 1968

NEWELL & SON

20 Fennels Farm Road
Flackwell Heath



Tel: 01628 525329/524294

All Plumbing & Heating
Specialising in Bathrooms
Floor & Wall Tiling & Decorating

Reasonable Rates
No job too small

John M Wilks
Heating and Plumbing
EST 1971
Specialising in power flushing and
cleaning of all types of domestic
heating systems



Tel: 01628 527020
Mob: 07802 946209

www.buckspowerflush.co.uk
info@buckspowerflush.co.uk

Secondary Maths Tutor

Qualified Maths teacher in
Bourne End for one to one help.

- Common Entrance
- Key Stage 3 and GCSE
- AS/A Level

T: 01628 531521
E: kath.acres@spadeoakfarm.com
www.spadeoakfarm.com/Tutors

Community Minibus for Hire

12 Comfortable Seats
Reasonable Rates
Needs own driver

Contact Sue
at the Community Centre

01628 522604

Chiropody
Bourne End
Community Centre
Monday Mornings
07986 606814
For the treatment of all
Foot Ailments

 **TARGET READER SERVICE**
Useful Telephone Numbers

BOURNE END COMMUNITY CENTRE 01628 522604
www.bourneendbucks.com

POLICE 101 **EMERGENCY** 999
CRIMESTOPPERS 0800 555 111
www.thamesvalley.police.uk

POST OFFICES www.postoffice.co.uk
Last collection time:

Bourne End, Furlong Road	5.15pm	01628 520050
Flackwell Heath	4.45pm	01628 520524
Wooburn Green	5.00pm	01628 522939

DOCTORS' SURGERIES
Hawthornden Surgery, Wharf Lane, Bourne End SL8 5RX
Dr S H Buxton, Dr M Wolfen, Dr P Newman, Dr S Abbas, Dr M Siddiqui. Branch Surgery – 47 Straight Bit, Flackwell Heath, Bucks HP10 9NE

MESSAGES, VISITS & APPOINTMENTS 01628 522864
www.hawthorndensurgery.co.uk

HEALTH VISITORS' SERVICE 01628 482788

Cherrymead Surgery, Drs King, Fraser, Elias, Hettiarachchi and Payne
Queensmead Road, Loudwater, High Wycombe HP10 9XA
MESSAGES, VISITS & APPOINTMENTS 01494 445150
www.cherrymeadsurgery.co.uk

Pound House Surgery, 8 The Green, Wooburn Green HP10
Dr Elizabeth Bailey, Dr Raj Thakkar, Dr Shareen Hallas,
Dr Emma Southworth, Dr Mia Murray

Also at: Orchard Surgery, Station Road, Bourne End SL8 5QE
MESSAGES, VISITS & APPOINTMENTS 01628 530 997
www.poundhousepractice.co.uk

NHS 111 or www.nhsdirect.nhs.uk

HOSPITALS
Amersham Hospital, Whielden Street, Amersham,
Bucks HP7 0JD 01494 434411

Wycombe Hospital, Queen Alexandra Road, High Wycombe,
Bucks HP11 2TT 01494 526161

Stoke Mandeville Hospital, Mandeville Road, Aylesbury, Bucks
HP21 8AL www.buckshealthcare.nhs.uk 01296 315000

St Mark's Hospital, 112 St Mark's Road,
Maidenhead SL6 6DU 01628 632012

Wexham Park Hospital, Wexham Street, Slough SL2 4HL
www.heatherwoodandwexham.nhs.uk 01753 633000

BOURNE END DENTAL PRACTICE
Station Road, Bourne End, SL8 5QF 01628 523353
Mr G Goodall, Mr S Rees, Mr A Chandrapal, Mr A Powell
Mon-Thurs 8am - 5pm. Fri 8am - 4pm. Sat 9am - 2pm
www.bourneenddental.co.uk

ASH TREE HOUSE DENTAL SURGERY
6 The Green, Wooburn Green HP10 0EE 01628 532932

CALL TARGET ADVERT

CE
nd websites

HALL PLACE VETERINARY SURGERY
 61 - 63 The Parade, Bourne End SL8 5SB
www.hallplaceveterinarycentre.co.uk 01628 525274

DAY CENTRE, Wakeman Road, Bourne End SL8 5SX
 01628 527024

WYE VALLEY VOLUNTEERS, Portacabin, Wakeman Road
 Bourne End SL8 5SX
enquiries@wyevalleyvolunteers.co.uk 01628 521027

BOURNE END LIBRARY
 Wakeman Road, Bourne End SL8 5SX 0845 2303232
 Sunday & Monday closed. Open from 9.30am, half day on
 Wednesday. Open Saturday until 2pm. Late Night on Tuesday
www.buckscc.gov.uk/bcc/libraries/branches/bourne_end.page

British Rail Passenger Information 08457 484950
 Bourne End Station, Station Road, Bourne End SL8 5QH
www.nationalrail.co.uk

Carousel Buses www.carouselbuses.com 01494 533436
Arriva Bus Company www.arrivabus.co.uk 0844 8004411

North Thames Gas Emergency (Slough) 0800 111999
Southern Electricity Emergencies 08000 727282
Thames Water Supply Emergencies 0800 714614

THE SAMARITANS
 (free number even from mobiles. Texts also accepted) 116123
 Katharine House, 17 Uxbridge Road, Slough, Berks SL1 1SN

CITIZENS ADVICE BUREAU 03444 111444

BUCKS COUNTY COUNCIL, County Hall, Walton Street,
 Aylesbury HP20 1UA www.buckscc.gov.uk 0845 3708090
 Highways (Transport for Bucks) 0845 2302882
 Citizens Advice Consumer Helpline 0845 4040506

WYCOMBE DISTRICT COUNCIL
 Queen Victoria Road, High Wycombe HP11 1BB
www.wycombe.gov.uk 01494 461000

SCHOOLS
 Claytons County Combined, Wendover Road, BE, SL8 5NS
www.claytonprimary.ik.org 01628 525277
 Little Marlow School, School Lane, Little Marlow SL7 3SA
www.littlemarlow.bucks.sch.uk 01628 473316
 St Paul's School, Stratford Drive, Wooburn Green HP10 0QH
www.st-pauls.bucks.sch.uk 01628 521553
 The Meadows School, School Road, Wooburn Green
 HP10 0HF www.themeadows.ik.org 01628 521634
 Bourne End Academy, New Road, Bourne End SL8 5BW
www.bea.bucks.sch.uk 01628 819022

WOOBURN & BOURNE END PARISH COUNCIL
 Council Offices, Town Lane, Wooburn Green HP10 0PS
www.wooburnparish.gov.uk 01628 522827

LITTLE MARLOW PARISH COUNCIL
 Community Office, The Pavilion, Church Road, Little Marlow
 SL7 3RS
www.littlemarlowparishcouncil.org.uk 01628 890301

SING ON 01628 525415



Tailormade trips
BEACH HOLIDAYS
 honeymoons
 city breaks



As **your local Travel Counsellor** with years experience in the travel industry, I can tailor-make your perfect holiday. Available at a time to suit you, I will provide an unrivalled level of personal service, taking care of all your travel needs down to the finest detail.

Everything you book with Travel Counsellors is financially protected including hotels, low cost airlines and car rental at no extra cost.

SUE CLARIDGE Travel Counsellor

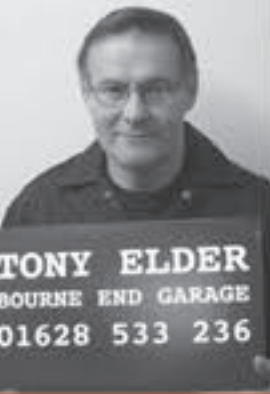
T 01628 876080
E sue.claridge@travelcounsellors.com
W www.travelcounsellors.co.uk/sue.claridge

Travel Counsellors ensures complete financial protection on every booking




The Kings Head
 Church Road, Little Marlow
 Tel: 01628 484407

We serve a wide variety of hot and cold food every lunchtime and evening and all day Sunday from 12 noon to 7pm, plus a good selection of cask conditioned ales and fine wines. In the wintertime there are log fires and in summer a large garden. The Pavilion function room caters for any type of party including conferences for up to 50 people. Please telephone 01628 484407 for details.



DO YOU KNOW THIS MAN?

This is the face of Tony Elder



Tony Elder has been synonymous with car care in Bourne End for over 40 years and he has taken over Bourne End Garage, where, he says "No job is too much trouble".

Call in for a chat and speak directly to the person who will be undertaking the work.

BOURNE END GARAGE
 1 OAKFIELD ROAD, BOURNE END
TEL: 01628 533 236

SERVICING • EXHAUSTS • TYRES • WELDING • MOT'S ARRANGED
 LOCAL COLLECTION BY ARRANGEMENT

Joe Griffin TV AERIAL SERVICES

- Ⓢ Poor Reception Solved - Aerials repaired & supplied
- Ⓢ TVs - Hung on your wall for you. Also supplied & tuned
- Ⓢ Extra TV Points - For aerial and Sky (In HD)
- Ⓢ Sky TV - Also Foreign Language TV

Call Marlow
01628 439115

A part of  OXFORD AERIALS

STEVE HOBSON Plumbing & Heating

Boilers, Gas Fires, Cookers,
Servicing, Installations and
Repairs,
Gas Safety Landlord Certificates,
Unvented Systems & Plumbing,
Vaillant approved installer

Tel: 01494 524357
Mobile: 07762 082984



Personal coaching can support
you in achieving your goals
Book your free consultation
with this advert

email: ceri.sims@positiveminds-alliance.com

07877048229

www.positiveminds-alliance.com

BS GARDEN SERVICES



- *Hedge Cutting
 - *Fencing
 - *Turving
 - * Garden Clearance
 - *Driveway & Patio Cleaning
- Call 07966205145
barrysteptoe@yahoo.co.uk

Pilates Matwork Classes

Beginners/Mixed Level and Intermediate
One to one by appointment

Venues - Abbotsbrook Hall
Upper Thames Sailing Club
Little Marlow Pavilion

St Dunstan's Church Hall - Bourne End
Call Sally on 0787 625 1967

DAVID HARRIS Electrician

FOR ALL YOUR DOMESTIC WIRING
Qualified & Experienced with
Electricity Board - Part P
TELEPHONE: 01628 810349

TO HIRE ABBOTSBROOK HALL

For Wedding Receptions
Meetings, Dances, etc.

APPLY TO
MRS C SAMUELS
2 RED COTTAGES
WELL END
or telephone
01628 528936

AMPLE CAR PARKING SPACE

The Phone Man

Need a new
telephone
socket for
your
computer or
SKY box?

Need one moved or repaired? Broadband signal
problems? Internal wiring problems? BT not
interested or you don't want to pay their very high
charges? Call John on 07709 895252 or 01494
711744 for free advice, fast service, and quality
work. All work and materials guaranteed.

john.summerbell@btinternet.com



Kingfisher
Building Consultancy

Thinking of extending?

We offer:

- Full architectural design service
- Planning and building regs applications
- Extension, loft conversion & remodelling
- Party Wall surveyor services
- Building and development consultancy

For professional, friendly advice, please
phone Bourne End (01628) 526998



FOR HIRE
St Mark's Church Hall
Station Road
Bourne End SL8 5QE
Enquiries to: Michael Payne
077430 37938

For fast, friendly & affordable
taxation advice
**Tax Returns/Self
Employed Accounts etc.**

Home visits & evening appointments available

For a quote, ring Keith on
01628 520426

or visit our website at
www.randallassociates.co.uk
for further details
Keith Randall ATT
Randall Associates

30 Stratford Drive, Wooburn Green HP10 0QH

EMMETT CONSTRUCTION DEVELOPMENTS LTD

Extensions – Conversions

Refurbishments – New Buildings

Private & Commercial Work Undertaken

Tel/Fax 01628 524500

e-mail: emmett123@btconnect.com

TRYING TO JUGGLE YOUR CHILDCARE?

Cookham Montessori School
For children aged 2-5 years

We are extending our hours to offer a
flexible package for busy mums!

Mix & match your daily requirements:

- Session start times: choose from
8.30am, 9.00am, 9.30am or 12.30pm
- Session finish times: choose from
12.30pm, 1.30pm, or 3.00pm

Funding available for 3 & 4 year olds

Term Time Only

Ofsted Validated

Phone 01628 529414



www.cookhammontessori.com

Soroptimists celebrate

Soroptimists from Thames Valley and High Wycombe linked up with members of the Poole Soroptimists Club in October to celebrate the International Day of the Girl.

This event, organised by Thames Valley Police, was aimed at informing the multicultural population of women and girls living in the High Wycombe area about facilities and services available to them.

Hundreds of participants, including Millie Soames, the High Sheriff of Buckinghamshire, took part and the Soroptimists were kept busy distributing leaflets and information describing the Purple Teardrop campaign which was set up after identifying the problems of trafficking women and girls.

Included in the day was a presentation by Angie Sarchet from Bucks County Council covering slavery, child sex abuse and exploitation.

Other agencies including Rape Crisis, MIND, NHS and the WI also attended to show how their initiatives could make a difference to women and girls in Buckinghamshire and across the country.

The event ended with a rousing performance by a local multicultural choir - a great end to an informative and worthwhile day.

The Future of Our Village

FoOV report by David Langford

We are exploring putting wig-wag warning lights on the Marlow Road near Claytons School in conjunction with Transport for Bucks.

These would be in operation when pupils use the pedestrian crossing at either end of the school day and would serve as an early warning for traffic on the Marlow Road.

We have contacted the Local Area Forum about the scheme and they will consider it in December.

The Local Community Support Officer attended our meeting. His main concern was the recent spate of door-to-door selling.

This was not illegal, but it had upset a number of mainly elderly residents. Apparently, it may be being organised by a charity with the co-operation of the probation service.

He said in general there was a low risk of crime in Bourne End.

Speed watch continues although there is a need for more volunteers near Claytons School.

The new local plan which I am sure is covered elsewhere in the magazine is an ever-present item. Suffice to say FoOV supported the financing of some professional expertise. On the wider issue of the Neighbourhood Plan, Wooburn & Bourne End Parish Council has engaged the services of rCOH (a neighbourhood planning and development consultancy) to produce a project plan in order for the steering group to create a neighbourhood development plan.

Kings Bridge Club ♣ ♦ ♥ ♠

We are based in the club house at Flackwell Heath Golf Club; we meet on a Monday morning from 9.15 to 12.00 noon. Parking is free. You don't need a partner anybody can join or be a visitor. All Bridge standards welcome. The Bridge is supervised and the members are at improver standard to intermediate level, we are all keen to learn and develop our bridge. We play Cut in Chicago Bridge and Gentle Duplicate, alternative weeks. If you are a bit rusty, don't worry. Two refresher lessons will be given free of charge to members.

Please call we are a sociable group and would welcome new players.

If you are interested telephone George Arkless 01628 526427 or Cecilia Williams 01628 528195

RAFFLE PRIZE DONATIONS

DO YOU HAVE ANY UNWANTED GIFTS AT HOME TO DONATE TO THE COMMUNITY CENTRE FOR OUR FUNDRAISING EVENTS?

IF SO, PLEASE BRING YOUR ITEMS TO THE COMMUNITY CENTRE FAO EVENT COMMITTEE.

MANY THANKS FOR YOUR SUPPORT OF THE COMMUNITY ASSOCIATION!

The CACI Pod



Our CACI Ultimate lifting treatment is both preventative and rejuvenating

- * Facial Lifting
- * Lines/Wrinkles
- * Eye Bags
- * Microdermabrasion
- * Skin Hydration
- * Neck Treatments
- * Cellulite, Stretch Mark Treatments
- * Jowl lift

20% off any course with this advert

CACI's celebrity friends include
Jennifer Aniston, Courteney Cox & Jennifer Lopez

thecacipod@yahoo.com Tel/Text 07901 276977

Maryofa House, Bourne End, Bucks SL8 5TZ. Visit www.caci-international.co.uk for more information



RELIABLE PROFESSIONAL SERVICE FOR:

- RODENTS • COCKROACHES • ANTS • FLEAS
- BED BUGS • FLY KILLER UNIT • BIRD CONTROL
- WOODLICE • GREY SQUIRREL • WASPS & BEES
- FLY CONTROL • FLY SCREENS

EMERGENCY CALL OUT

DOMESTIC & COMMERCIAL • FREE SURVEY • FULLY INSURED

Don't be bugged ring us now

23 Years Experience
Unmarked Vehicles

01628 525025



PHOTOGRAPHY by GILLIAN



ARTISTIC PHOTOGRAPHY OF FAMILIES AND INDIVIDUALS
SHOT IN NATURE OR STUDIO

BY GILLIAN GALLERY 12 FURLONG ROAD BOURNE END SL8 5DG TEL 01628 527720

Happiness is no laughing matter!

MEBCA
Charity No 300236

FORUM PLAYERS
Present

BABES IN THE WOOD

A Family Pastoral
By TLC Creative

At Bourne End
Community Centre

**Saturday 21st & 28th Jan
At 2.30 & 6.30pm
Sunday 22nd Jan at 2.30pm**

Free Performance for Senior Citizens
Wed 18th at 8pm

Tickets are available from Bourne End Library or
Tel Leigh Robinson on 01628 523291

Adults £9
Concessions £7
Family Ticket (2A+2C) £28
Discount for Groups
of 10 or more

Bourne End Junior Craft Show

Mother and daughter, Sue and Amy Croall, organisers of Bourne End Junior Craft Show, said they were "elated" after this year's event which took place at the library in October.

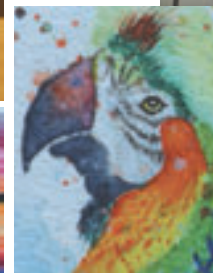
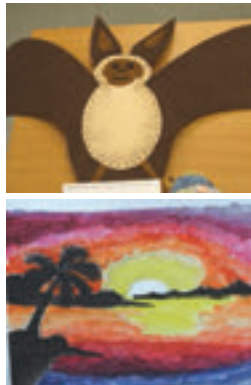
With more than 180 entries, all of a very high standard, the guest judges really had their work cut out to choose the worthy winners. The trophy for Judges' Favourite (kindly donated by Space-Pod) went to seven-year-old Eloise Dews for her stunning prom dress made out of bin liners.

The room was certainly buzzing as people came to view all the entries and gathered for the prize giving. "The fabulous sense of community is one of the reasons we love doing this" said Sue.

For more photos from the event, all taken by Ana Meechan, check out the Craft Show website at www.croalls2005.wix.com/bejuniorcraftshow.

Pictured: Eloise modelling her creation (photo by her parents). Other entries all photos Copyright ©2016. All Rights Reserved.

Ana Meechan
anaspanna10@hotmail.com



ashtonopticians
OPTOMETRISTS

Your independent practice in Flackwell Heath for value, style and personal service

- NHS and Private Eye Examinations
- Digital imaging and OCT scanning
- Behavioural Optometry & Vision Therapy
- Wide range of NHS, budget and top designer spectacles
- Contact Lenses
- Prescription and non prescription sunglasses
- Specialist sports eyewear
- All types of contact lenses fitted and supplied

01628 530420 www.ashtonopticians.co.uk
Mark Ashton BSc(Hons), MCOptom, Ros Ashton BSc(Hons), MCOptom,
1 Acorn House, Straight Bit, Flackwell Heath

**JACQUI JONES
PERSONAL TRAINING**

Fed Up Being Overweight & Unfit?

Want To Kick Start Or Improve
Your Fitness Regime?

I Can Help You!

Fully Qualified Personal Trainer

For A Free Consultation
07595223314

www.jacquijonespersonalfitness.co.uk
jacquijones62@btinternet.com
Train at Home or at Private Gym
In Flackwell Heath

fairfield framing

Bespoke picture framers
in Bourne End

☎ 01628 529646
📱 07976 883856

debparrish@aol.com
Established since 1998

Ridgeway Property Services

- * Boilers * Heating * Plumbing
- * Natural gas and LPG servicing, installations and breakdowns
- * Toilets, hot water cylinders, tanks, overflows, blocked drains, guttering, waste and drain pipes

Gas Safe 27329

Tel Ian: 07973 289186
ijackson903@icloud.com

www.ijplumbingandheating.co.uk

TECS 19 Ltd
Pest Control

- Wasps • Insects
- Rodents • Foxes
- Rabbits • Birds

Please Call
Tel: 07979 808809
tecs19ltd@gmail.com

Halloween horrors

On Halloween Chef-Proprietor Chris Grego, and his wife Grace, celebrated their three year anniversary at The Walnut Tree Bourne End with a fun event, inviting customers and their families to carve Halloween pumpkins to be displayed outside the pub and to enter their annual competition for all ages.

The judging panel comprised *Target's* Barrie Penfold and Debra Aspinall, Lindsay Blaikie from Claytons Combined School, Lande Brown from Holy Trinity School, Cookham and Penny Hampson from St. Paul's C of E School in Wooburn Green.

Pumpkins were carefully judged on originality, carving technique and overall appearance and the winners were seven-year-old Lewis Balbini who was praised by the judges for his very aggressive classic face design, 11-year-old Maddy Williams who wowed the judges with her flying witch and castle creation and Robert Webster (for the second year running in the adult category) with his trio of home grown pumpkins. Well done everyone!



Top (l to r) Josephine (JoJo), 8, Laila, 9 and Isobel, 8. Right, Becky Micallef of Wooburn Green



Ghoulish fun at Martin's

Frightening and spooky ghouls and ghosts were there to serve at Martin's and all in a good cause. Left to right they are Carl, JP, Jessica (who did all the make-up), Rhys and Glynn. Together they were raising money for St George's Hospital for research into cardiac risk. They made around £175 on the Saturday before Halloween. And they certainly made an impact with customers. Well done everyone.

Parish councillor Katie's local environmental update

This really is one of my favourite times of the year, with the trees and their fiery displays of colour and the rustling of leaves as you walk soft muddy paths. Then home to unwrap out of cosy coats and scarves, washing wellie boots and towelling dogs down.

I'm sitting now with a cup of steaming tea at hand and sleeping dogs at my side with a crackling fire which fills the room with warmth.

I find myself thinking about the past year, and what a year it has been. We now have two new ponds, have seeded many wildflower areas to be enjoyed by us and our wild friends, we have also weeded, sprayed, fed, raked and mowed acres of grass.

Bird boxes have been built, brown trout have been raised and released into the river and we have planted everything from bedding plants to trees.

We have new gates, new bins, renovated signs, information stands and benches and we have made plans to continue all this work and much, much more.

We have looked at the parish and identified areas where we can extend the planting of wildflowers for both human pleasure and wildlife. We plan to plant poppies around the edge of the old cemetery, near the war graves. This will not only be a living tribute to our fallen men and women, but will also be a colourful and memorable display as we walk and drive past.

We hope to add seeds and continue to nurture the amazing meadow area at Sapper's Field. This is such a beautiful and peaceful area and it has some great play equipment for little ones, it is well worth a visit.

The area around the pond in Farm Wood is quite wet so it would make a perfect location for creating a wet meadow area. Wetland meadows are rare and dying out in Britain, as are the species which rely on them. We have found, with thanks to John Shaw from Chiltern Rangers, a supplier of a wet meadow mix of native British grasses and wildflowers (all guaranteed with 100% UK provenance).

This mix will provide a wonderful display throughout the year and will be a food source for many birds, insects and small mammals.

The Blind Lane community orchard did well for its first year so in the spirit of old English tradition, we are hosting a wassailing celebration (Joe and Ed Grundy from The Archers would be proud)

It was believed that wassailing helped the trees grow stronger and produce an abundance of fruit. So on Sunday January 15 we would love for you all to join us at Blind Lane Park from 3pm, where there will be Morris dancers, apple cakes, apple juice and of course warming mulled cider. It will be a fun family afternoon and a great excuse for everyone to get together.

Before I sign out I would like to take this opportunity to thank 'Revive the Wye' and all the volunteers who gave up their time and worked so hard clearing the river bank from Glory Mill Lane to Five Acres in Wooburn. We can now see the water as we walk along the river bank.

So with snoring dogs and an empty teacup at my side, all that I would like to do is wish everyone a very Merry Christmas and a happy and healthy New Year. Wrap up warm and enjoy our winter wonderland as it won't be long until the sun is shining again. The snowdrops and crocuses will pop their sleepy heads out of the ground to signal the first flowery signs of life and the start of another year.

Bourne End Care & Activity Centre

Situated in the heart of Bourne End, our day service provides a homely environment for older people, including those with dementia, to socialise, build friendships and enjoy a wide variety of activities.

Our caring and experienced team is on hand to provide expert care and support, including personal care. (Transport is available).

For more information please contact :

Debra Shirley on 01628 527024 or email :

debra.shirley@fremantletrust.org

Bourne End Care & Activity Centre
Wakeman Road, Bourne End, SL8 5SX

www.fremantletrust.org

A registered charity and not for profit organisation
Registration No. 11274986



Back home safe and sound...

Back in April Target reported Flackwell Heath resident, Stephen Jones, who was just preparing to set off for a gruelling yacht race to raise money towards building a children's hospice.

Stephen, 65, joined the IchorCoal team for the demanding seventh leg of the Clipper Round the World Race, from Seattle on America's East coast to New York on the West coast via the Panama Canal and the Caribbean.

After 40 days of hard racing 24 hours a day, seven days a week competing against 11 other identical 70ft ocean racing yachts, he completed the 7,120 journey.

Here he tells us how he got on...

There were 15 crew plus the skipper aboard our boat, IchorCoal, sponsored by a South African company. Five of the crew had left London eight months earlier, others had done the leg across the Pacific which had been through horrendous weather and 90ft waves and others, like me, joined the boat in Seattle.

The first race was Seattle to Panama down the West Coast past Washington, Oregon, California, Mexico, Guatemala, El Salvador, Honduras, Nicaragua, and Costa Rica before reaching Panama.

After one night in Panama City the yachts transited the Panama Canal to



reach Colon on the Caribbean coast of Panama where we stayed for two days before starting the second race of about 2,000 miles up to New York. This race took the yachts between Cuba and Haiti, past the Turks and Caicos Islands and the Bahamas and then into the Atlantic sailing past Florida, South and North Carolina, Virginia, Maryland and New Jersey before arriving in New York City, New York.

Life on board living in very close quarters with people one hardly knew was a challenge, but we quickly bonded and there was little friction. Physically it was challenging too, but I had done Pilates and kept fit to cope with pretty much everything I faced. We even had to share a bunk, hot bunking I think they call it! We were all one team with a common purpose, sailing the boat safely and as fast as possible to the destination.

We were divided into two watches, working four hours on four hours off during the night and six hours on six hours off during the day. The boat runs 24/7 and all duties are continuous, helming, sail trimming, navigation, look out, filling in the ship's log every hour, emptying the bilges, cooking the meals. 6000 calories a day is the average rate of energy burn but we ate well and all took a turn on galley duty. I was half a stone lighter when we reached New York.

The race was one of extreme temperatures ranging from 8°C to 32°C. Sailing out of Puget Sound from Seattle to the start line took about 36 hours and it was bitterly cold on board. Luckily (or unluckily as I had sea sickness) I was in my bunk for 12 hours, but I was pleased I had bought some thermal kit before leaving Seattle.

As we headed south toward Panama the temperatures below deck became increasingly hot to the extent that one crew member, also from Buckinghamshire, swore he would get off in Panama and fly in some comfort to New York. I said he would regret it and managed to persuade him to change his mind.

For variety there were sightings of seal life to keep us amused. Flying fish were plentiful but they are not pleasant when they hit you full on in the face. Squid washed on to the decks in the morning were a regular sight. Removing them was one of the daily tasks. Rather more pleasant were the schools of dolphins that kept up with the boat regularly. Frigate birds sometimes hitched a lift sitting on the bow for days on end. Whales were seen in Puget Sound but I missed the sight; remember I was below decks suffering from the green monster at the time.

What were the highs and lows of the voyage? One high was transiting the Panama Canal. The other was safely getting through tropical storm Colin off the Carolinas. High winds and huge waves were the hallmarks of the storm but the boat was strong and our young skipper had sailed in worse conditions before. All the boats came through unscathed.

The lows were few. I focused on the tasks in hand, enjoyed the wonderful night skies and didn't complain when being woken up at 1.30am for my next watch.

Connected with the race I wanted to raise some money for a local charity. I chose the Alexander Devine Charity who are currently building a hospice for children in White Waltham. If you would like to make a donation please do so by pasting the following address into your internet browser mydonate.bt.com/fundraisers/stephenjones6.

Would I do it again? Most certainly. The teamwork and sense of achievement is hugely rewarding. There is no need for previous sailing experience as four weeks training is provided. Neither is there an age limit. The youngest participant was 18 and the oldest 75. All that is needed is a sense of adventure.

POWER
STRENGTH
MOTIVATION
AGILITY
DETERMINATION
CONFIDENCE
NUTRITION
BOOTCAMP

FREE WEEK TRIAL

 TUES, THURS, FRI 09:30-10:15
SAT 07:30-08:30

marie@mindbodyfit.co.uk | 07825 004132

CROSSFIT WYCOMBE, Unit 7b Wessex Road, Bourne End, SL8 5DT

mind
body
>fit

We know
Bourne End

Are you looking to sell or let your property
in and around Bourne End?

Beaconsfield regularly heads the list of the top 10 most expensive towns
in the UK and attracts many premium buyers and investors.

Could you get more by using one of Beaconsfield's leading estate agents?

To arrange a free, no obligation market appraisal, call us on 01494 680018
Visit our website www.ashingtonpage.co.uk for an instant online valuation.



Ashington Page

Fashion and fun for the WI ladies

No it's not Paris or Rome, but the community centre which one day in November was set out with a catwalk for a special fashion show. Then there was time for some shopping with top brands at very competitive prices. It was all thanks to Bourne End WI who staged the event and declared it a sell-out long before it took place. Pop music, non-stop models and you could get close to the action. Will the fashion world soon start talking about Bourne End along with Paris and Rome?!!



Clockwise: WI committee members with a model l-r Beryl Chapman, Lucy, Eloise Clark. Sally Lee from Flackwell Heath considers a purchase. And bags and boots hit the right fashion note...



Poppy pride

Claytons School children learned and gave a great deal of thought about Remembrance Day in November and created poppies using different materials.

Head teacher, Jensa Carter, told us: "They were surprised on Friday [November 11] morning when they came into school to find a display of poppies similar to Caernarfon Castle's Weeping Window Sculpture."

What a stunning display!

Sapphire

Elegant dresses
For hire and sale:

- Evening
- Proms
- Parties
- Awards Dinners
- Cruises

For sale only:

- Mother of the Bride/Groom
- Bridesmaids
- Special Occasion

Go with matching hats, hand-purses, shoes, bags and jewellery

Open 9.30 am - 5.30 pm,
Monday - Saturday

Out of hours by appointment:
Sunday

11-13 Wycombe Lane, Woolbarn Green, HP10 0HD
Tel: 01628 530 516 - www.sapphiredresses.co.uk




Ivory Belle at Sapphire
Bridal wear. Book an appointment at
www.ivory-belle.co.uk
or call: 01628 530516

Please follow us on Twitter @sapphiredresses
Please like us on Facebook sapphiredresses

The Bounty

Cockmarsh, Bourne End

www.thebountypub.com
Call 01628 520056 for directions



Winter:
Open weekends for drinks and food.

Summer:
Open daily from noon. Food until 8pm, drinks until 11pm



Raising the standard in domestic cleaning

- * Regular cleaning, weekly, bi-weekly or monthly
- * End of tenancy cleans
- * Spring cleans
- * Quality, vetted staff with smart uniforms
- * 1st class oven and carpet cleaning service

Call Jenny or Chris on 01628 521497

www.casa-fresco-cleaning.co.uk



Cliveden - not just for Christmas

The stunning gardens are now open all year!

Set high above the river at Hedsor lies Cliveden with its fabulous views and beautiful gardens which will now be open for everyone to enjoy all year round.

The National Trust gardens will only close to non-residents for Christmas Eve and Christmas Day.

"We're very excited," a member of staff told *Target*.

"Now our visitors can enjoy what we have to offer without a break in the Winter. It is a positive move from the National Trust and Cliveden."

There are special festive events planned here too. Cliveden is playing host to a panto-themed trail for its young visitors through December (Saturday and Sunday 3 & 4, 10 & 11, 17 & 18) then from Wednesday 21 to Tuesday 3 January).

Widow Twankey and the gang are coming to Cliveden as part of this special trail for the festive season. Will you get your wish granted by a genie? Will you make it home before the clock strikes midnight? There's only one way to find out. Oh yes there is!

Dress up as your favourite panto character to make the most of the fun family activity. Explore Cinderella's kitchen, find Aladdin's magic carpet in the cave of wonders and try to spot the top of the beanstalk.

The trail costs £5 per child and along the journey children can pick up three stocking-filler gifts as a keepsake.

Normal property admission prices apply. No booking required. Visit the information centre to pick up your trail.

A wander round the formal gardens is just what you need after indulging in luxurious mince pies and spiced mulled wine from Cliveden's Orangery café. Whether you're in the Long Garden admiring the topiaries' Winter haircut, or frolicking along the crisp winter lawns of the Parterre, Cliveden's gardens are a delight.

For further details about events, opening times and admission prices go to nationaltrust.org.uk/cliveden, call 01628 605 069 or e-mail cliveden@nationaltrust.org.uk

It wouldn't be Christmas without

Bourne End Jewellers

On-site workshop specialising in bespoke jewellery

- HENRY LONDON • ALEX MONROE • ASTLEY CLARKE • HOT DIAMONDS • KIT HEATH • DAISY
- COEUR DE LION • CLAUDIA BRADBY

www.bourneendjewellers.co.uk



Bourne End & Cookham Rotary Club By John Dunsterville

Our Rotary club has two main functions: to raise funds and to use those funds for the benefit of the community and projects abroad, but all done in good spirit and fellowship. Each member club brings their own expertise and experience to serve a common purpose.

For example we were approached by Naomi Riches to help with her amazing Thames Rowing Challenge on September 18. No problem – with two rowing champs among our members, local links and club members ready to pitch in, a fun afternoon was assured. Naomi raised funds for 'In Vision' for sufferers of Nystagmus, a dreadful sight condition.

Our club has voted on our two main charities for this year, Rennie Groves Hospice and Air Ambulance. If you have a cause to champion or want to improve the lives of those around you, do call Maureen on 01628 850595, or see our website to find out more: www.beac-rotary.org.uk and www.facebook.com/beacrotary

Glory Mills Bowls Club By John Palfreyman

The club really appreciates the work carried out by the green keeper and his assistant and also the members who helped prepare the green for the winter months, as well as during the season. Without these people it would be impossible to keep the club running without a huge hike in the club's membership fee which remains one of the lowest in Buckinghamshire.

We are always looking for new members: contact shirley.churn@btinternet.com or call 01494 673859

Bourne End & Cookham Probus Club By John Daymond and Brian Print

At our October meeting we welcomed back Rupert Matthews who gave us an illustrated talk on the Battle of Waterloo.

He outlined the background to the conflict which started after Napoleon Bonaparte moved his army into France in the spring of 1815 and catalogued the events which ultimately led to Napoleon's defeat on June 18 at the Battle of Waterloo in present-day Belgium.

In September, retired Customs Officer Malcolm Nelson joined us at short notice to present a talk entitled Lies and Excuses, giving a series of anecdotes relating to passengers' attempts to avoid paying duty on goods and purchases over the imposed allowances.

The different attitudes adopted by passengers in the Red and Green Channels at Heathrow were illustrated. Poor body language in the Green Channel is a major factor in apprehending the guilty. A group of Italians who arrived accompanied by their 90-year-old mother were stopped and asked to open their bags, when a huge stash of wine and spirits was discovered, including 49

bottles of brandy and 30 bottles of champagne. The response "Mama packa da bags" did not cut any ice or prevent the imposition of a heavy fine and confiscation.

One Lebanese gentleman arrived with 13 bags, which were found to contain 310 pornographic videos. The Customs Officers were supposed to watch every one!

Malcolm Nelson's endless store of amusing tales, plus his excellent delivery, always provides us with a good presentation.

To join our Probus Club contact Brian Print on 01628 523739.

Bourne End and Wooburn WI By Janet Spill

In September we welcomed Dru Ellis who entertained us with tales from the kitchen and home from 1900 to the present day, accompanied by a variety of interesting props. Before leaving, Dru read out an amusing piece on advice given to 1960s housewives.

In October we enjoyed a fish and chip lunch before getting down to the business of the AGM. Susan Weaver was voted President for a further year. After refreshments, we rounded off the meeting with a quiz devised by committee member, Sue Roberts.

On November 14 the speaker was Hugh Granger who promised us a light-hearted look at old age with a talk entitled 'I'm not really old, it's these tablets'. December's meeting will take the form of a Christmas Party with music from the 50s and 60s.

Meetings are held in St Dunstan's Church Hall on the second Monday of the month at 2pm. Visitors and prospective members are most welcome.

Inner Wheel of Bourne End & Cookham By Diana Hyde

Our members were transported to South America while munching mince pies and sipping mulled wine at a cosy evening in November.

We have been busy planning our Annual Charity Christmas Tea on Thursday December 1 and it should be a fascinating afternoon. Home-made sandwiches and cakes made by our members will be served along with a raffle and this year the main benefactor will be Parkinsons UK.

Bourne End Fun Night is another 'must' in the calendar, and once again we are organising our 'Gift in a Bag' stall – so please support us and see what lovely gifts you can win while supporting local charities at the same time.

A date for the diary of Bridge players – on Wednesday March 1 we will be holding our fifth Annual Charity Bridge Drive and Tea at the Soltau Centre, Stubbings, £32 per table. More details on 01628 810967.

Bourne End WI By Kath Acres

In October Andy Thomas gave a fascinating talk on

The Mystery of Crop Circles. While we were all convinced that these are too geometrically perfect to have been constructed by a couple of people on the way home from the pub, how Crop Circles do pop up remains an unsolved mystery!

Members and friends enjoyed a fantastic trip to the Hindu Temple in Neasden followed by a delicious curry buffet. The Temple welcomes all visitors and is well worth a visit - the building is stunning.

Our Ladies Fashion Show and Pop Up Shop in November was hugely successful and a sell-out, which demonstrates that there is still a big appetite for shopping in Bourne End.

Our next meeting will be our Christmas Party with entertainment from Banjovi on Thursday December 1 at St Dunstan's Church Hall at 7.30pm. Visitors are always welcome at our meetings and we have a short waiting list for new members that you are welcome to join. Email bourneendwi@yahoo.com.

We hope to see you at our stall in the library during Bourne End Fun Night being held on Friday December 2. We have hand-crafted Christmas decorations and upcycled air purifying Spider Plants to make them festive and on trend.

Little Marlow & Well End WI By Judy Wilson

In recent months a member decided to share her bursary with us, and we had an extremely interactive flower arrangement demonstration given by two members of Bourne End Flower Club.

We were thrilled to receive a letter of thanks from a lady-in-waiting at Buckingham Palace thanking us for the card we sent to wish Her Majesty a happy 90th birthday.

Members attended an afternoon meeting at Milton Keynes entitled *A Right Royal Event* where two ladies spoke of their careers, one involved in making Princess Diana's wedding dress, the other as editor of Majesty magazine who spoke about her new book *The Queen's Speech*.

At our October meeting Malcolm Nelson regaled us with tales from his career as a Customs and Excise officer.

Later that month we were hostesses to the recently enlarged Carrington Group of WIs and were pleased to welcome members from Bourne End and Wooburn, Booker and West Wycombe to join our existing institutes.

We enjoyed an entertaining talk by John Pearson, entitled *Blessed are the Cheesemakers*, who told us about his career working for Express Dairies and M and S as a quality checker for imported items such as bread, wine and cheese.

Some of our craft group made poppies using differing designs and fabrics which were sold in aid of the Royal British Legion.

We also made plans for our Christmas meeting and lunch at Winter Hill Golf Club, as well as a visit to Kew Gardens by night. It is also the occasion when the new committee and officers for the coming year are elected. Our President for the coming year is Susan Spearman.

Visitors are always welcome. Contact 07762 642073.



Approval had been given to ramble around the Abbotsbrook Estate and the first excitement was a photo on the new bridge over the Abbots Brook.

All they had to do was wave for the picture. Then it was off around the estate, down to the river and back home for hot chocolate and marshmallows.

"It was a great evening," said their Brown Owl Rosie Kimber, "and we raised £266 for Children-in-Need."

Seeing and hearing the sounds of roosting birds was a great experience as well as the occasional sight of a wild animal, which made the Brownies aware of life after twilight.

The new bridge was a bonus as it looked lovely and they all fitted on for the photo.

Brownie ramble for Children-in- Need

Brownies who meet every week at Abbotsbrook Hall had a treat in store.

Not only were they venturing out from the security of their hall, but it was going to be dark and by torchlight.

The popular BBC TV programme, Countryfile, challenged their viewers to go forth and ramble – all in a good cause. For the Brownies it was a perfect chance to get out and see their environment in the dark.

A couple of years ago trustees of the Abbotsbrook Estate asked local structural engineers HAC to review all the bridges on the estate.

Fortunately, most only needed some minor maintenance. However, it was decided that this particular footbridge needed so much repair that it had reached the end of its useful life.

So the task of finding and getting a new bridge was a challenge for John Stanley, a resident on the estate, who took on the responsibility and found Beaver Bridges' who turned out to be excellent contractors.

Now the footbridge has a steel underside for strength and longevity, but is clad in wood to allow it to look beautiful and fit in with its surroundings.

Nature, night-time and a new bridge – what a great experience for the youngsters who set off that evening. Well done to the Brownies, Abbotsbrook Estate and to the Countryfile Ramble for Children-in-Need.

BEAUTIFUL TREES MAKE A HOUSE A HOME.



- Tree & Shrub Pruning
- Cabling & Bracing
- Fertilisation & Soil Care
- Insect & Disease Management



FOR THE LIFE OF YOUR TREES.

Please Call 01494 677 889 or visit BEACONSFIELD@BARTLETTUK.COM  





The Pentagon Clinic

Osteopathy and Physiotherapy

Stella Halpin BSc.(Ost.)
David Turner B.Ost.
Morag Bowie M.C.S.P.M.H.P.C.

The Annexe
Bourne End Day Care Centre
Wakeman Road, Bourne End
Bucks SL8 5SX

email: info@pentagonclinic.co.uk
www.pentagonclinic.co.uk
Tel: 01628 533200

Our highly qualified and established Clinical Team continue to provide Osteopathy, Physiotherapy and Sports Massage for all ages. We have a wealth of experience in the assessment and treatment of a wide range of musculoskeletal conditions.



Tug tales

Target editor, Debra Aspinall, spends time with one of Bourne End's oldest 'residents'

The little tug at Bourne End Marina holds a special place in the hearts of many who use the river or walk along the local riverside paths. And this is especially true of the men who work on her, come rain or shine.

On a wet, distinctly un-Summery day this Summer I took a ride in the little vessel while marina manager, Pete Osborne (pictured), and his two right-hand men, Matty and Chaos, showed me what she gets up to on a regular basis.

Pete recounted the tale of 2013 and how the tug was partially sunk in an accident when a scaffold lorry "landed" on top of her during the repairs to the bridge.

The damage to the tug was bent metal and engine damage, but thankfully her hull was not scarred and she was back in action after repairs.

"I couldn't believe the number of people who were



asking me if she was going to be ok," he says. "The outpouring of affection for her was incredible."

But then this tug warrants some respect. The original body is around 100 years old. And she has seen some drama and rescued quite a number of stranded or straying boats in her half a century here. She could be classed as Bourne End's fourth emergency service!

On the day I visited she was doing more mundane work, moving boats hither and thither to accommodate newcomers to the busy marina.

Her small size and the expert handling of Pete meant she made light work of moving precious boats smoothly and, most importantly, without a scratch.

On any given day there are jobs lined up for the tug and jobs for the marina staff who are on hand to

pump diesel, empty sewage from boats and assist the numerous visitors to this busy corner of the village. One minute Pete could be selling canisters of gas, the next setting off to capture a wandering boat.

Anyone who regularly reads Pete's Marina Life column (at least a couple of you) will have guessed that despite all his jokes about their work, this marina team are constantly busy on this often hectic stretch of river.

As well as arranging the moorings, ensuring everything runs smoothly here for boatowners and passing customers and manning the shop/office, they are involved with the ongoing maintenance and servicing of boats and all the necessary marina equipment (including the tug). They run a tight ship and have a waiting list of people wanting to moor here.

Pete has been at the helm 15 years and clearly enjoys his work. "I love the fact that it's a local marina for local people", he says. "And this stretch of the river is just beautiful."

Pete's little dog, Rocky, is also a familiar face at the marina and accompanies his owner on tug runs and in the shop, only just stopping short of having a go at driving the tug.

"Yes, he thinks he's in charge," laughs Pete. Having seen him in action I think he just may be...



advancedentalservices.co.uk Bourne End 01628 525223

Tip the balance
in favour of good dental health:

sugar intake effective cleaning
fluoride use

**advance
dental services**

1 Station Court Station Road SLB 5YP

BASL
**BUILDING &
MAINTENANCE LTD**

Mathew & Paul Billingham - Seventh generation builders
t: 01628 298185 w: www.BASLbuilding.co.uk e: Mathew or Paul@BASLbuilding.co.uk

*We undertake any and all work to your home
to a high standard and cost effectively*

CHRIS GATES
**Decoration &
Repair Services**

- *Top quality interior and exterior decorating
- * Interior carpentry, plastering, coving and tiling
- *Repair and restoration of exterior woodwork
- *Box sash window repair and refurbishment
- *All types of glazing repairs
- *Fully insured with references available on request

**For advice and a free estimate
Tel: 01628 529698
Mob: 07802 457274
Bourne End**

Bourne End Community Library

by Inka D'Agostino, library manager

"Happy, happy Christmas, that can win us back to the delusions of our childish days; that can recall to the old man the pleasures of his youth; that can transport the sailor and the traveller, thousands of miles away, back to his own fire-side and his quiet home!"

Charles Dickens, The Pickwick Papers

Once again the year has flown by and we are now entering the festive season.

The library as usual will be participating in the village Christmas fun night on Friday December 2 and extending our opening hours to 8pm.

Come and help us celebrate with a glass of our famous mulled wine. There will be face painting, craft activities, a book sale, charity Christmas cards and market stalls.

It's also the season to curl up with a good book, forget about long dark nights and immerse yourself in a world of imagination. Borrow best sellers but also revisit old classics. We have replenished our shelves with new sets of Nevil Shute, Graham

Greene, Agatha Christie and Elizabeth Howard novels plus much more.

December's **Lifestyle Club** will meet on Friday December 16 at 10.30am when we will be serving mulled wine during a Christmas quiz.

In January, start the New Year with grand garden designs. Our guest speaker Deborah Lewis will talk on *How to Create A Beautiful Garden* and how by looking at gardens both glorious - and those needing transformation - can teach us how to look at our own gardens afresh. This will take place on Friday January 20 at 10.30am.

Simply Walk our walking group meets every Wednesday at 10.15am. We also have Yoga, meditation and Tai-chi classes, so there is no excuse for starting the New Year on an unhealthy note.

We also hold regular **Learn My Way** computing sessions on a Friday morning, if interested please contact us to book a place.

We should like to wish all our customers a Merry Christmas and a Happy New Year and thank you all for your continued support.

For further information about library activities or to hire our community rooms please contact us on lib-boe@buckscc.gov.uk or phone 0854 2303232 or leave a message on our Facebook page: Friends of Bourne End Library

Community Market focus

Hand-made craft and gift workshops

My name is Sally Adams from "Craft a Gift, Gift to Treasure".

I am a qualified craft tutor and enjoy sharing my knowledge and experience through craft clubs and workshops.

I know there is something magical about producing something by your own hand.

For the crafter the process of making the item provides a feeling of wellbeing that is vital to the quality of the finished product.

In a world of mass-production people are turning to hand crafts to inspire them and reconnect to the natural skills of our ancestors.

I started my first craft club in 1997. I had just lost my Mum and decided then that I would love to share my knowledge with others and have some fun in the process.

I now also run a monthly craft club. We meet on the first Saturday of the month 10am to 1pm in Maidenhead and do a different craft every time.

The club workshops are just £9 and include all the materials required. But you can also join us as a social member and work on your own project for just £5. Whatever you do, tea, coffee and cake is all included in the price.

We do just about every craft there is to enjoy!

- Card making using decoupage, beads, metallic threads, etc.
- Parchment craft.
- Rubber stamping.
- Die cutting and embossing.
- Tea-bag folding.
- Decopatch.
- Plastic canvas.
- Cross-stitch.
- Needlework, knitting, crochet.
- Cake decorating, sugar craft.
- Jewellery making.
- Silk painting.

I am driven by my desire to run successful craft clubs and workshops, but also my market stall at the community market at Bourne End.

The markets are held in Bourne End Library on the second Saturday of each month 10am to 1pm.

I make small items for the stall such as mug hugs, sewing machine mats, cards, jewellery, aprons, peg bags and notelet holders.

Come along on December 10. You will find a variety of genuine handmade gifts to buy for family, friends or another special person in your life.

As well as crafts, there are food, health and beauty stalls and a chance a win on the charity tombola! For all market enquiries, please call 07989 716635 or email rosieohagan@me.com



From the ground up
a helping hand in the garden
Local garden design, planting & maintenance service - 07863 735786

Sew Sew Pretty
Quality hand-made curtains, blinds and soft furnishings
Contact Alison on 07747 778678
www.SewSewPretty.com
Alison@SewSewPretty.com

Hawkinsport

TEAMWEAR SCHOOL UNIFORM
SPORTSWEAR CORPORATE WEAR

Tel: 01628 819242 sales@hawkinsport.co.uk
Unit 10a Wessex Road Industrial Estate, Bourne End, Bucks, SL8 5DT

JG dance
Jemaine Greville Dance Academies & Theatre College

2½ - 18 years, Girls & Boys
Beginner classes in Ballet, Jazz, Tap & Acrobatics
FREE TRIAL LESSON

RAD, ISTD & LAMDA
Classes up to Advanced 2
Twice Yearly
Theatre Performances

Call: 01491 572000 email: info@jgdance.co.uk
BOURNE END - Wednesdays after School WWW.JGDANCE.CO.UK

LOCAL BUILDER
C Page
30 years experience

Patios Brickwork
New Builds Fencing
Driveways Extensions

Phone Chris on
01628 529013
mobile 07887 655727

BUCKS
therapy

JANUARY
WEIGHT LOSS SPECIAL

Four hypnotherapy sessions covering motivation and willpower, reducing portion sizes, overcoming bad food/drink cravings and stopping snacking £200 for full course (also available to couples)

07518 018 363 buckstherapy.com

C.O.D.GROUNDWORKS
Specialists in all types of Groundwork

* Paving * Patios
* Fencing * Block Paving
* Drainage * Driveways
* Patio Cleaning * Concreting

NO JOB TOO SMALL
FREE ESTIMATES
Tel: 01628 528637
Mobile: 07778 371552

Thames Music Tuition Guitar, Piano & Flute

 All ages/abilities welcome
Tel: (01628) 525140
Mob: 07920 165619
www.thamesmusic tuition.co.uk

Painter & Decorator
N. W. Upward
2 Fisherman's Way
Bourne End
All wall coverings hung.
Glazing & Wall Tiling.
Estimates Free.
01628 528921

YOGA WITH LINDA

Monday morning, Tuesday evening
and Wednesday lunchtime
Bourne End
Ring: Linda Jolliffe 07503212815

Stacey Home Visiting
Foot Health
Practitioner

A new Foot Health service
available in your area

Services provided -

- First consultation Free
- Routine nail care
- Hard skin, Corn and Callus
- Verrucae treatment
- Ingrowing toe nails
- Fungal nail treatment
- Elderly care home visits
- Home Visits
- Local, Professional, Friendly Service

For further information or to book an appointment please contact Elizabeth Stacey on

07817 873592

or email - lizstacey70@gmail.com

Elizabeth Stacey MCFHP MAFHP



ALLAN WISE & CO
ROOFING SPECIALIST

Complete Roofs or Repairs
Large or small jobs
Estimates FREE

01628 525740

MANKIND
MENS HAIRDRESSING

Tel: 01628 528974

15 The Parade
Bourne End
Bucks
SL8 5SA



R S HALL UPHOLSTERY
31 years experience
ALL UPHOLSTERY WORK UNDERTAKEN

- * Re-upholstery
- * Sofas & Chairs
- * Loose Covers
- * Antiques
- * Pubs & Clubs
- * Schools
- * Hospitals
- * Office Chairs

Large Contracts
Over 300 fabrics available
Free estimates

Also fabrics at competitive prices,
upholstery sundries and all sizes of foam

Contact Bob: 07809 140988
T: 01494 461481
E: contact@rshallupholstery.co.uk
www.rshallupholstery.co.uk

MAINTENANCE & LANDSCAPING

Property Maintenance, Professional Landscaping, Fencing, Specialist Patios, Paving, Tree Surgery, Etc.

DAVID J KIMBER, 01628 810361 07850 124241

Past times...

A short history of Wooburn from the Jean Howell archive in the library – edited by Barrie Penfold

Way back the parish of Wooburn in the county of Buckinghamshire was known as Waborne (in the 11th century) and Woodbourne (during the 18th century).

It is watered by the River Wye which enters the parish from High Wycombe and empties into the River Thames at Bourne End. It was part of the manor of Deyncourt in 1496.

Dredging at Bourne End railway bridge, some years ago, brought to light a flat-bottomed oak boat dating back to the Bronze Age, thus revealing the existence of a civilised community in Wooburn as far back as pre-historic times.

This boat was presented to the Natural History Museum in Kensington where it can still be seen.

Wooburn Manor formed part of the lands of King Harold, last of the Saxon kings and, after the Norman Conquest, it was held by leave of William the Conqueror to Remigius, Bishop of Lincoln. His tenant was Walter Deyncourt or De Aincourt, a kinsman of the conqueror, and in 1086 the value of Wooburn Manor, which was also known as Bishops

Wooburn and Woodburn Deyncourt, was assessed as eight-and-a-half hides.

Deyncourt Farm with cottages and outbuildings is all that remains of Deyncourt Manor House as it existed in the 15th century, while the old manor house of Wooburn was used by the Bishops of Lincoln down to the 16th century.

Bishop Attwater died there in 1521 and Bishop Longland – confessor to King Henry Eighth, died there about twenty years later.

Then, things changed, and the Dukes of Wharton lived there in 1718 and spent £100,000 on improving the estate.

The palace was surrounded by a moat, part of which remains, together with a fish pond. Traces of the terraces cut into the hillside by order of the Duke of Wharton can still be seen.

The old manor house was taken down in 1750 except for one of the great stable wings which was converted into the Wooburn House which was occupied by various families, including the Gilbeys.

After the Second World War it was used by the Imperial War Graves Commission until it was demolished to make way for the development of the Wooburn Manor Estate and the creation of Wooburn Park. At the far end of the parish in 1235 John de la Gloria held half a fee in Wooburn on behalf of Oliver Deyncourt whose estate appears from the early 15th century as 'The Glory Manor'

or 'The Glory' or 'Glory Mills' and was a sub manor of Wooburn Deyncourt.

Goodwin's Manor, another part of Wooburn Deyncourt, is in records between 1400 and 1600.

St Paul's is the parish church and dates from 1180 and had a ring of eight bells. Its architecture ranges from then and examples of the oldest masonry being found in the bases of the south west pillars which are pure Norman.

The North Chapel, with a 14th century window, was begun in 1360 and 1442 saw the rebuilding of the tower.

The church registers begin in 1653 and there are some interesting brasses and some good stained glass. Memorials in the church feature old Wooburn families including the Deyncourts.

Wooburn has a thousand years of history, names that date back to landowning families and industrial entrepreneurs, where the pattern of life has been made by a fast flowing river that provided power to grind corn, make paper, bend wire and numerous other uses.

Surrounding it are lush green fields to be grazed or cultivated to meet needs.

Today, any remaining mills form features for developers as a link with the past. While its hillsides are grazed or cultivated, as they always were, there might be shots ringing out from the men with guns who delight in a day's sport.

Wooburn certainly has its heritage while being very much part of Buckinghamshire's future.



Bottom left: The Gilbeys' coach waiting for the train at Wooburn Station

Left: Wooburn Green about 1905. Although older than Bourne End it didn't become a tourist attraction

Bottom right: The Royal Oak pub in Wycombe Lane about 1910. Wooburn was renowned for its number of drinking establishments



OUR LOCAL CHURCHES KEEP IN TOUCH

St Paul's Church and St Mary's Church, Wooburn

On Saturday December 10 children can have 'Breakfast with Santa'. Contact sophiewinkler@googlemail.com for timings and tickets. If your children enjoy crafts, getting messy and tea then come to the Messy Christmas Crafts on Saturday December 17, 3-5pm at St Paul's Church Hall. This is a joint venture with St Mark's Church in Bourne End. Contact clandeacon@talktalk.net.

For our Christmas services, there will be a Carol Service at 6pm on Sunday December 18 at St Paul's. The popular Christmas Eve Crib Service will be held back in St Paul's church this year at 4pm. Children can come dressed as shepherds and angels. The Midnight Mass will start at 11pm at St Paul's.

On Christmas Day at St Paul's a Communion Service is at 8am followed by an All-Age Service at 9.30am. On New Year's Day an Informal Holy Communion is at 9.30am at St Paul's.

In term time we have the Friday Communion Service and Lunch held at St Mary's, and at St Paul's Church Hall there is the Youth Club on Mondays at 7-8.30pm, Toddlers on Tuesdays at 9.30am, and Tots Praise on Fridays at 9.45am. See www.stpaulswooburn.org

We support The Walk Centre in Nakuru, Kenya, which helps slum-dwelling children and their families by providing education, healthcare and food aid. The next of our regular workshops to sew children's dresses from pillowcases and shorts from T-shirts will be on Saturday January 7 at St Mary's. If you are interested in helping contact Sam at dressesmadewithlove@aol.co.uk. For more information on services or hall hire contact stpaulswooburnparishoffice@gmail.com or 01628 525512.

Cores End United Reformed Church

Our Harvest collection has so far raised over £470 for the Bethesda Eye Hospital in Benin.

In October, 42 shoe boxes were collected for Link to Hope for needy families and elderly people in Eastern Europe.

Our Christmas Children's Fun Day is on Saturday December 3 for ages five to 11 with craft, music and games. Call 01628 526865 to book.

Christmas Charity Morning is on Saturday December 10, 10am to midday at Cores End Church Hall, with refreshments, stalls and tombola in aid of Bethesda Eye Hospital in West Africa and our Commitment for Life

Charity (Palestinian Agricultural project).

Sunday December 18 at 6.30pm is our Christmas Celebration in the church with carols, readings, seasonal music and refreshments. All are welcome. Our Christmas Day service at 11am is led by our minister.

Our regular services are on Sundays at 10.30am,

with junior church for the children and a crèche for babies and toddlers.

Community Church

Our Sunday services at 10.30am (refreshments from 10am) are at the Chapel on the Green throughout December and up to January 8. We meet at the Meadows School on January 15, 22 and 29.

"Gather" takes place monthly on Sunday evenings at 7-9pm in the Chapel on the Green on December 4 and January 8, a vibrant time of uplifting worship where everyone is welcome.

Our popular Carols on the Green event is on Saturday December 17 with refreshments from 4.30pm and carols at 5pm. On Sunday December 18 our Christmas Celebration at the Chapel on the Green is at 10.30am (refreshments from 10am.)

Small groups meet weekly in people's homes for a chance to chat, eat and explore the Christian faith, see www.wooburngreen.org.

Our Tuesday Lunch Club (also known as TLC) is the chance to meet others and enjoy home-made soups, fresh bread and delicious cake every Tuesday at 12.30pm in the hall at the Chapel on the Green. Contact 07894 143925 or d.bitcheno@sky.com.

Dad's Little Steps (£2 per family including bacon butty) runs on Saturday December 3 and January 7, 10-11.30am, for Dads with pre-school children.

On Thursdays throughout term time we hold our toddler group Little Steps (£1 per family including drink and biscuit) at 10-11.30am in the hall at the Chapel on the Green. Finally, a reminder that children are very welcome at our Sunday services.

St John the Baptist, Little Marlow

Thanks to everyone's generosity, particularly the children from Little Marlow C of E school, at our recent Harvest Festival we were able to give more to the One Can Trust and Women's Aid than ever before.

A particular joy is the end of term Nativity Services held by the school. It's wonderful to have so many children and their families using our historic church.

Christmas services will start on December 18 at 6.30pm with our traditional Nine Lessons and Carols followed by mulled wine and mince pies.

On Christmas Eve a Crib service at 3pm and 4pm will follow the same format with a "No Rehearsal Nativity" and children are invited to come dressed as a character from the Nativity scene.

Midnight Mass is at 11.30pm and Christmas Day services are at 8.30am and 11am which is a family communion.

We look forward to welcoming all to our church. Information from Jeffrey Smith 0777 595 7090 or Wendy Osborn 0797 046 2149.

St Mark's Parish Church

At Fun Night on December 2 we will sing carols outside the library and passers-by are welcome to join in.

The Christmas Dinner is held in Church on Thursday December 15 at 7pm where all families

are welcome but please book in advance.

Messy Christmas is open to all young families and we are partnering with St Paul's Church, Wooburn Green on Saturday December 17, 2.30-5pm in the church hall.

The Nativity service is on Sunday December 18 at 10.30am and the Carol service follows later at 6pm. On Christmas Eve the first Christingle Service is at 3.30pm and the second at 5pm, all welcome at both but parents may prefer the earlier service for smaller children.

The Christmas Eve Holy Communion is at 8pm to accommodate our seniors. Please note the new time.

Celebrate the birth of Jesus with us at our 10.30am service on Christmas Day.

All the usual mid-week events will re-start from January 9. Further details can be found at www.achurchnearyou.com and www.parishesofhedesorandbourneend.co.uk, the Rev Janet Binns 01628 523046 and Alison Gray 01628 298022.

St Nicholas' Church, Hedsor

Our seasonal services begin with the Christingle Service at 4pm on December 4, always a lovely service to bring the children to. Our Nativity Play performed by the children takes place at 9am on December 18 and is for all the family. Our midnight service starts at 11pm on Christmas Eve with a special family communion at 9am on Christmas Day. We invite you to join us as we celebrate the birth of Jesus.

Our annual Epiphany Carol Service takes place at 4pm on January 8 with our choir directed by Dr Peter Wilton. We also welcome additional musicians and singers to make this another service not to be missed.

In the New Year our services continue as before with Holy Communion at 9am except on the second Sunday of the month when we have the Pathway family service.

St Dunstan's Church

Sadly we shall be saying goodbye to Fr Henry Sanni who is returning to Nigeria, he will be greatly missed and we wish him well.

Our Bishop, Peter Doyle, from Northampton will pay a long weekend visit to our parishes next month. We look forward to welcoming him. He will celebrate all Masses and attend a special supper at St Teresa's in Beaconsfield.

The Cards for Good Causes charity shop is open Monday to Saturday, 9.30am to 4pm (until December 16) in the church porch with a fine selection of charity cards, gift wrap, calendars and Christmas items.

On Christmas Eve the Nativity Mass will be at 6.30pm at St Dunstan's (Vigil Mass at St Teresa's in Beaconsfield at 10pm, preceded by Carols from 9.15pm).

Mass on Christmas Day here at St Dunstan's will be at the usual time of 10am. Everyone is warmly invited to join our celebrations.





Kids & Family Christmas Party

CHILDREN'S ENTERTAINER

SATURDAY 3RD DECEMBER 2016 3.30-5.30



WAYNE WONDER

BOURNE END COMMUNITY CENTRE

CHILDREN £6
ADULTS £1

PARTY FOOD BOX AND PRESENT INCLUDED FOR EACH CHILD

WAKEMAN ROAD BOURNE END SL8 5SX



Forum Players panto approaches...

All is not well in Nottingham! The wicked sheriff is growing rich on the many taxes he is forcing the poor townsfolk to pay and he is just about to become even richer.

Pip (played by Archie Wilson) and Penny (Mollie Thorne) have been orphaned and are heirs to a vast fortune. Foolishly they have been entrusted into the sheriff's care and he is hatching a horrible plan to make sure that he will inherit the cash.

An added bonus will be to marry Maid Marian into the bargain. All that stands in his way is the very brave, and dashing, Robin Hood and his Merry Men, the fearsome Nanny Coddle, brainless Dave Knave (played by Trevor Begley) who is a wannabe outlaw and a rather overworked fairy. Will they succeed in thwarting the evil plot and beat the sheriff and his villainous henchmen?

Find out how it all works out for our "babes" in Forum Players panto at the community centre on dates through January. All the details are on the poster, see page 24.



BOURNE END (BUCKS) COMMUNITY ASSOCIATION Membership costs

INDIVIDUAL MEMBERSHIP over 18 years of age	£5
JUNIOR MEMBERSHIP under 18 years of age	£5
FAMILY MEMBERSHIP husband/wife/children of school age	£10
ASSOCIATE MEMBERSHIP (outside the area of benefit)	£5
ASSOCIATE FAMILY MEMBERSHIP (outside the area of benefit)	£10
SENIOR CITIZEN MEMBERSHIP	£3
SENIOR CITIZEN FAMILY MEMBERSHIP	£4
LIFE MEMBERSHIP husband/wife/children of school age	£60
SINGLE LIFE MEMBERSHIP	£30

Annual subscriptions are payable on or after 1 January each year. Family membership carries one vote. Associate and Junior Membership carry no vote.

APPLICATION FORM

Cut out and send or hand in at the community centre,
Wakeman Road, Bourne End, Bucks SL8 5SX

NAME.....

ADDRESS.....

Email.....

TYPE OF MEMBERSHIP.....

AMOUNT PAID.....

Chess

Early results show a good start by Bourne End 1 in the Bucks League the second team. The third team drew their opening fixture. We need to avoid having eligibility problems. We can be contacted at bebches via our web site www.bucksvoice.net/bourneendchess. Alternative secretary, Roger de Coverly on 01628 486676.

Darts

Because of the larger than usual entry for the Wooburn Summer League in which to complete all the matches, it has been decided this year winners of each league having a play-off to decide the overall winners.

The community centre has entered two teams, one playing in League 2. At the time of writing only the first three rounds have played mixed. Team A, made up of the old time stalwarts, got off to a shaky start. Team B, the new team, got off to a flying start and are winning games in each league remain before the play-off final.

By the luck of the draw, or perhaps the deviousness of the contrary, their first four games at home and the remaining four away. Team A meet.

Summer darts is more leisurely than Winter darts and is more for the "arm" in good shape. It is also, as last year, to support the Air Force.

Angling Club *news from the water's edge*

The club's return in September to Hill Cottage Farm was full of hope but did not fulfill its potential. It was an enjoyable day, but weights were 19lbs 4oz, Robert Smith came second with 13lbs 4oz and club champion with 4lbs 2oz.

October saw the return to New Farm where a change in weather helped. Top weight was 37lb 2oz for Terry Belcher, mainly carp caught on winning bait. Mick Shurrock fished the margins on the float for a school club treasurer Tony Colborne finished third with 12lbs 10oz.

November sees the club taking on House Lake at the Milton Pool. The lake's bream and roach will be the main target although the eel might give someone that winning bonus fish. The club's Christmas Dinner at the End Pool. Seasonal greetings to all the *Target* readers.

Are you interested in watching live theatre?



39th CAROL CONCERT

18th DECEMBER 2016

7.45pm

at

**BOURNE END
COMMUNITY CENTRE**

**with the
Festival Brass**

**Free Admission
Refreshments available
during the Interval**

Here at the community association we have been investigating the possibility of screening live theatre productions. The presentation is much the same as watching a film – with the live action being broadcast from the theatre and projected onto our large cinema screen on the stage in the main hall of the centre, accompanied by high quality live audio in ‘surround sound’.

However, we want to know how many people are likely to support such a project before we go ahead.

Initially these will be HD screenings of professional productions from the National Theatre and may then be extended to include opera productions from around the world (Royal Opera House from Covent Garden, Met Opera from New York and Sydney Opera to name a few) as well as drama productions from other theatrical companies – such as the Royal Shakespeare Company, the Kenneth Branagh Theatre Company and others.

“I have been impressed by the numbers of people attending shows that I have seen in local cinemas in High Wycombe and Maidenhead – so I believe there is interest and probably local support for such a project” explained community association chairman Jeremy Ilic.

He went on to explain that initially we would likely have about 10 live screenings per year – taking place on a weekday evening (around 7.15 or 7.30pm) and finishing just after 10pm with a possibility of a repeat recording of the broadcast at a weekend shortly afterwards – probably as a matinee.

Ticket prices would be competitive compared with charges at cinema venues. Of course once we have the facilities for showing theatre, we can also provide traditional film shows (including recent cinema releases) – should there be sufficient interest and support for these types of shows as well.

Further down the line, again with support, we might extend the range of offerings to encompass other types of entertainment such as sporting events, concerts and some of the various Summer festivals that take place. However, arrangements for these have yet to be fully explored.

To provide these facilities requires some considerable technical and financial investment. However, most crucially, for such a project to succeed there not only has to be public interest, but real paying audience support for them as well.

One purpose of this article is to find out if that financial investment would be worthwhile. We would like to know how many people are likely to attend such shows, how many times a year – and how much you might be willing to pay for tickets for such shows?

As a guide local cinemas charge between £15 and £17 for theatre or opera shows and around £7 to £9 for new release films. We would aim to be a bit cheaper if possible (sometimes ticket prices are set by the provider of the show).

Please let us know by emailing watchitlive@targetmagazine.org.uk or drop a note into the community centre office marked for the attention of Jeremy Ilic.

FOREIGN CURRENCY

Do you have any unwanted foreign bank notes or coins? Over the past few years the Community Association has benefited to the tune of more than £15,000 from local people digging out left-over foreign money. So if you find any just bring it in to the centre office where we will convert it into sterling and put it to good use.



When Avril suggested the idea of bingo at the community centre she wasn't sure it would take off. Now she knows it's a great Friday evening event with regulars who love the chance to win. Avril and Helen run the Friday night bingo with the help of Brian as caller.

“All the money we take goes out in prizes” Avril was delighted to report. “That's good for the people who come along to play. We also have a raffle and get our prizes from local shops.”

So on a Friday evening it is “eyes down” at 8pm as the numbers are called and the aim is to complete a ‘row’, ‘two rows’ or the ‘magic of a ‘full house’. Drinks from the bar, good company and a really good challenge make it a great night at the centre. Why not come on down! (Friday 2pm sessions are still running)



League and early set-backs for...
ed more players in the club to...
ss@yahoo.co.uk and you can...
ely, you can talk to our

League and the restricted time...
r to run two leagues with the...
ner.

League 1 and the other in...
ayed and our fortunes are...
ky start and are in mid table in...
well ahead in League 1. Five

oller, Team A are playing all of...
B are the opposite so never

camaraderie and for keeping...
Ambulance Association.

ge

pe, but this venue once again...
e low. Terry Belcher won with...
airman Roy Savin was third

conditions affected results...
the lead with pellet being the...
second place 13lbs 8oz and

ls complex for the first time...
lusive resident specimen carp...
s match will be held at West

OUR GROUP MEMBERS KEEP IN TOUCH

Bourne End Flower Arrangement Society

We meet at the Community Centre, Wakeman Road, Bourne End at 8pm on the first Tuesday of each month. Floral demonstrations are arranged for each meeting plus an annual outing and an in-house floral workshop.

Visitors are welcome, and a fee of £10 applies for our December meeting with National Demonstrator Coral Gardiner on Tuesday December 6. Her floral theme is Country Christmas. The entrance fee includes a raffle ticket, mince pies and tea or coffee.

Marlow-Maidenhead Passengers Association

GWR contractors have finally installed and commissioned the public address at Bourne End Station. It also operates at Marlow Station.

Toilets at Cookham Station are now reported to be working after resolution of drainage problems.

Issues have been reported with the GWR mobile phone app which has been giving erroneous information regarding services. We are waiting for a response from GWR.

There are changes to the 75 bus service from Maidenhead to Heathrow. The through services are now less frequent and some 75 buses only operate between Slough (Wellington Street) and Heathrow. To connect to these a number 4 service operates from Maidenhead to Slough Bus Station.

As usual please let us know of any problems you encounter on Marlow Branch services.

Marlow and District Railway Society

In October we had a return visit from local photographer Geoff Plumb with another in his series "That was the year that was..." and this time it was as far back as he can go – 1962. His excellent show featured Geoff's own and other photographs of notable railway activities that year.

On December 15 we have Members' Christmas Social Event, and on January 19 a talk on The Lynton and Barnstaple Railway by Peter Miles, Chairman of the L&B Railway Trust, who will give an overview of its history, reinstatement and future plans.

With the exception of the Christmas Social, visitors are always welcome at any of our meetings to enjoy not only the presentation itself but also the bar facilities at Bourne End Community Centre. Meetings start at 8pm unless otherwise stated. A small fee of £3 will be charged. For further information see www.mdrs.org.uk

Bourne End Townswomen's Guild

Christmas is coming and with that in mind we

welcome you to our special tea with entertainment. And our plea is for some new people to come along and enjoy being a member of the townswomen's guild. There are speakers, games afternoons and involvement with local events. We are a friendly bunch of ladies and would love to see more of you at our regular monthly meetings.

To shake off the Christmas excesses our January meeting is some gentle Keep Fit to get us ready for the spring. Join us on the second Wednesday in the month at the community centre in the Target Room, 1.30-4pm.

Our next meetings are on Wednesday December 14 and January 11. 2017 will see another year of interesting speakers for our members to enjoy as well as being part of the community. If you would like to talk about joining us before you come along please ring 01628 527931.

Bucks Family History Society

Beaconsfield Town Crier Dick Smith will be our very welcome guest at our Christmas meeting on Tuesday December 13 with an interesting and amusing talk.

There will be mulled wine and mince pies afterward to get everyone in the Christmas spirit. Then on Tuesday January 10 we welcome Michael Gandy who will talk about Middle Class Ancestry and he comments that the title speaks for itself.

We meet in the community centre small hall on the second Tuesday in the month at 7.30pm. Visitors are welcome to attend and hear a particular speaker but if you want to know more about us and our quest for information about our ancestors, please visit www.bucksfhs.org.uk

Bourne End Twinning Association

We had a most enjoyable evening at our autumn dinner in October. Following an excellent meal provided by our regular caterers, we had a most entertaining talk entitled My Family and Other Setbacks from Mel Rees. Many of us identified with the family anecdotes he related.

At the Flackwell Heath Memorial Sunday service, our Chairman will be laying a wreath on behalf of the Association.

British troops were heavily involved in Operation Astonia which saw the regaining of the port of Le Havre, adjacent to our twin village Octeville sur Mer.

Our very talented choir continue to meet regularly and are looking forward to one or two performances during the Christmas season. In the New Year, when we have all recovered from the Christmas festivities, we will be holding our galette and coffee afternoon – always a popular event when we can get together for an informal chat, while enjoying a slice of traditional galette des rois. (This is a delicious frangipane filled pastry which the French serve on the feast of the

Epiphany; there is a tiny charm inserted in the tart and the lucky recipient becomes the 'king' or 'queen' for the day!)

Our events are always enjoyed by our members, and now we are looking forward to going to Oocteville sur Mer at the end of April. We will be arranging a coach and we will be hosted by our French friends for what is sure to be a most enjoyable weekend.

If you would like to become a member please ring 01628 521748 or take a look at www.bebta.ukgo.com

J G Dance

Pupils of J G Dance won 170 places in the British Arts Semi-Finals National Dance Competition. Ranging in age from 4 to 18 years the students performed modern, tap, ballet, national, drama and singing items.

Sixty pupils went on to gain places in the National Finals held in London's Shaw Theatre.

Two Senior Students won places at the prestigious London Studio Centre commencing in September.

Royal Academy of Dancing Examinations produced yet another 100 per cent success rate with many students gaining the top mark of distinction.

In addition many pupils have been performing in shows and through our agency have won parts in major films and on TV, including Bridget Jones's Baby, Fierce Creatures, Mary Poppins (release 2017) and many more. Former students are in Holby City, Rebel in the Rye, Collide (releases 2017). We are so proud of them all!

For more information on classes contact info@jgdance.co.uk or 01491572000.

Bourne End Horticultural Society

We have no meeting in December but our new programme for 2017 begins with our AGM on Thursday January 19 at 8pm at St Dunstons Hall, Bourne End. Everyone is most welcome with members asked to kindly provide a plate of finger food.

Our speaker in February will be Margaret Finch from Farley Hill Place Gardens. She will be telling us about Growing Plants with Flower Arranging in Mind and will include a practical demonstration.

New members are always most welcome with or without garden expertise! Please phone Penny Hampson on BE.521482 or contact pennyhampson@hotmail.com

1st Wooburn Scout Group

Our Scout section entered four teams for the Big 'O' competition in October. This is a County orienteering competition and out of 85 Scout teams, one of our teams were second overall. The other teams all did very well. The Scouts use this event as a training exercise for the upcoming Grimsdyke Hike.

Our big group event was the Remembrance Sunday parade on November 13 at Wooburn

Green where we paid our respects to the brave local men who sacrificed their lives for us all.

Our Beaver section had a Halloween themed evening with donuts, hoopla and decorating apple slices. The Scouts also carved pumpkins and played Halloween games.

We had a 'work in' at the Scout HQ attended by parents and members of the group. Loads of jobs were completed, gardening, painting, cleaning etc and bacon rolls were enjoyed by all. The Scout HQ is now set for another year. We also had decking and a canopy installed at the rear of the building.

For more information on the Scout group visit wooburn.wixsite.com/wooburnscouts

Bourne End Video Makers

Members have recently completed filming the club's latest project which is currently being edited. It is a short film about a man and his dog who is killed in a road traffic accident, but does not know he is dead, at least the man doesn't! Once completed the plan is to enter the film in local competitions and more widely in film festivals.

The club's last project, a short called 'Pull', about jealousy and murder, was very well received when it was showcased at this year's Fisheye Film Festival in High Wycombe. Members were also recently involved in making a short promotional video for 'Lovesong' which is being performed at Norden Farm Theatre on November 2 to 5.

The club's website (www.bevm.co.uk) has been updated recently and is well worth a look. More information about the club is given in a short film, the link to which is found on the 'About Us & Join Us' page of the website.

See more on page 7.

Wye Valley Volunteers

We will be having our usual Christmas get-together early in December as a thank you to all our volunteers. Our team includes home visitors, drivers, volunteers for the coffee mornings and luncheon club and volunteers who run the office, nearly 100 in all. We are very grateful for all they do.

Despite the healthy sounding numbers, we are always looking for new volunteers to be able to fulfil all of our many requests for services.

If you would like to learn more about any of our volunteering activities, do please contact us on 01628 521027 or call at the Community Volunteer Office (portakabin to the right of the Community Centre) which is open every weekday from 10 am to midday. Similarly do please contact us if you need help from our services.

We will be taking part in Bourne End fun night with the Community Minibus on The Parade and hope that you will visit us to find out about our organisation, both about how we can help you and how you can become a volunteer.

CALENDAR OF VILLAGE EVENTS

DECEMBER

For Christmas church services in December see Churches page 35

- 1 Thu Cards For Good Causes charity Christmas card shop at St Dunstan's Church. Opening Monday to Saturday, 9.30am to 4pm until 16 December
- 1 Thurs Community Centre Bar Quiz starts at 8.30 pm. It's a £1 per person, and the winning team gets the quiz takings from the night
- 2 Fri Late night shopping and Fun Night in Bourne End village. Free parking in Wakeman Road Car Park. See page 1 for details
- 2 Fri Bingo in the community centre. The fun starts at 2pm and 8pm
- 3 Sat Kids and family Christmas Party at the community centre with children's entertainer See poster page 36
- 3 Sat 10am to 3.30pm Children's Fun Day. Craft, music and games for children 5-11yrs at Cores End Church. Spaces limited so call Ann Pendergast on 01628 526865 to reserve a place
- 4 Sun Maggie's Nest antiques fair 9.30am to 3.30pm
- 5 Mon AGM of Future of Our Village (FoOV) at 7.30pm in the Soho Room, Bourne End library
- 6 Tues Bourne End Flower Arrangement Society at the community centre, 8pm. Visitors are welcome, a fee of £10 applies for our December meeting with National Demonstrator Coral Gardiner, her floral theme is 'Country Christmas'. The entrance fee includes a raffle ticket, mince pies and tea or coffee
- 6 Tues CentreJazz: live music from 8pm in the Community Centre bar. Admission £5 includes raffle
- 8 Thurs Public meeting of the Keep Bourne End Green supporters at community centre 7.30pm. See report page 4
- 9 Fri Bingo in the community centre. The fun starts at 2pm and 8pm
- 10 Sat Bourne End Community Market 10am – 1pm in the Library
- 10 Sat 10am to midday. Christmas Charity Morning at Cores End Church Hall. Refreshments, stalls, tombola - all proceeds to charity
- 11 Sun Table top sale at the centre 9.30am to 11.30am. Call Caroline on 01628 485642 to take part
- 16 Fri Bingo in the community centre. The fun starts at 2pm and 8pm
- 16 Fri Social dance with Barbara and David at 8pm. Good dancing in friendly company.
- 17 Sat Messy CHRISTMAS Crafts for children from 3pm to 5pm at St Paul's Church Hall
- 17 Sat Carols on the Green organised by the Community Church. Refreshments from 4.30pm, carols from 5pm
- 18 Sun Carol Concert with the Festival Brass starts 7.45pm at the community centre. Free entry. Refreshments available
- 23 Fri Bingo in the community centre. The fun starts at 2pm and 8pm
- 30 Fri Bingo in the community centre. The fun starts at 2pm and 8pm
- 31 Sat **New Year's Eve Dance with Barbara and David. See in 2017 in good company and dance the night away. Wide variety of dances including party dancing. Great evening at the centre. Drinks from the bar and a social buffet (everyone brings something to share). Dancing to 12.30am. Smart dress for the occasion. Tickets £7.50 from Barbara on 01628 629563**

JANUARY

- 5 Thurs Community Centre Bar Quiz starts at 8.30pm. It's a £1 per person, and the winning team gets the quiz takings from the night
- 6 Fri Bingo in the community centre. The fun starts at 2pm and 8pm
- 8 Sun Maggie's Nest antiques fair 9.30am to 3.30pm
- 13 Fri Bingo in the community centre. The fun starts at 2pm and 8pm
- 14 Sat Bourne End Community Market 10am – 1pm in the Library
- 15 Sun Wassailing celebration at the Blind Lane community orchard complete with Morris dancers, apple cakes, apple juice and of course warming mulled cider. Starts 3pm
- 18 Wed Forum Players present a free performance of their pantomime, *Babes in the Wood*, for senior citizens at the community centre. See poster page 24 for details
- 20 Fri Bingo in the community centre. The fun starts at 2pm and 8pm
- 20 Fri Social dance with Barbara and David at 8pm. Good dancing in friendly company.
- 21 Sat Forum Players present their annual pantomime, *Babes in the Wood*, at the community centre. Evening and matinee shows. See poster page 24 for booking details
- 22 Sun Forum Players present a matinee performance of their pantomime, *Babes in the Wood*, at the community centre. See poster page 24 for booking details
- 27 Fri Bingo in the community centre. The fun starts at 2pm and 8pm
- 28 Sat Forum Players present their annual pantomime, *Babes in the Wood*, at the community centre. Evening and matinee shows. See poster page 24 for booking detail

The next issue of Target will cover February and March 2017. Email editor@targetmagazine.org.uk by Tuesday January 3 to get your event included in the calendar. The magazine will be published on Friday January 27.

Please call into the centre and pay for your copy of Target

Target Quiz

Sponsored by The Falcon Pub, Wooburn Moor

Number 95

More general knowledge from Penny Walsh to work on over Christmas. Some are harder than others – but get them all right and you could win Penny's mystery prize. Write your answers on an envelope, add your name and address, include £1 entry fee then take it into the community centre office. All money raised goes to the community centre.

- 1 What is the chemical symbol of gold?
- 2 How many carats in pure gold?
- 3 When was H M the Queen's Golden Jubilee?
- 4 Who formed Microsoft?
- 5 Where might you find Nessie?
- 6 How many muses in Greek tragedy?
- 7 What do you call a female swan?
- 8 How many deadly sins are there?
- 9 How many spots on a dice?
- 10 Where are the anvil, hammer and stirrup found?
- 11 What are made of keratin?
- 12 Where is the patella?
- 13 What is rubella?
- 14 What is carrageen?
- 15 What did Napier invent?
- 16 What is a sidewinder?
- 17 What was Mrs Beeton's first name?
- 18 What is pancetta?
- 19 What is another name for an earth pig?
- 20 What river flows through Norwich?

The closing date is Friday 6 January 2017

ANSWERS TO QUIZ 94

1 A snake 2 Matthew Webb 3 Cheese 4 A boat 5 A horse 6 147 7 Cherry 8 Mahon 9 A horse 10 1,760 11 Cornflower 12 64 13 Type of willow 14 Royal National Lifeboat Institute 15 20 16 Tierney Clark 17 Anglesey, North Wales 18 Speed of sound 19 Arthur Ransome 20 Tchaikovsky

The winner is Christopher Rathbone, Clifton Place, Bourne End.



The Falcon Pub

Watery Lane,
Wooburn Moor, HP10 0NE

Tel: 01628 522752

December 9

Bubl  is back



December 31st

Come and join us!
Enjoy bringing in the New
Year with live music
(no entrance fee)

25% off

any meal at The Falcon Pub
throughout January and
February 2017. Please bring
this advert with you.
One use only.

The Fruit Market

Independent Retailer of the Year in the 2016 Fresh Food Awards

David Bryant and
The Fruit Market Team say a
big "thank you" to all their
customers for their continued
support and great enthusiasm
during this very
exciting year when they won
Independent Retailer of the
Year for the second year
running.

*"We always try
to do our best"
is their maxim*



Christmas is coming...



Once again The Fruit
Market has a huge choice
of festive fare from
wreaths, holly, mistletoe
and trees to spicy treats,
nuts galore, fruit,
vegetables and flowers
for the season.

*"If there is something special you would like - let
us know. We want to give our customers just
what they want,"* Says David Bryant.

The Fruit Market,
The Parade, Bourne End SL8 5SS
Telephone: 01628 521403