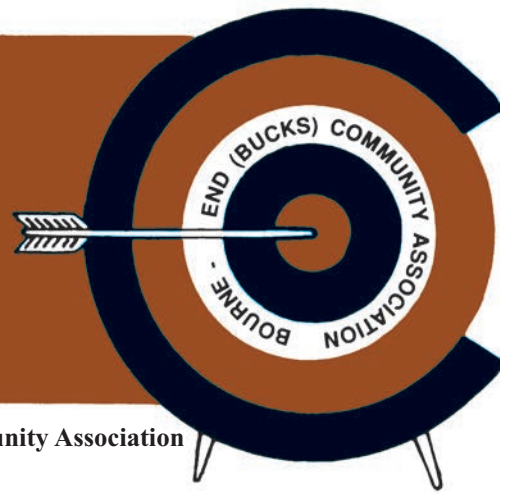


target



VOL.52 No5
OCT/NOV 2016

£1 *Suggested price*

The Journal of Bourne End (Bucks) Community Association

THE FIGHT GOES ON...

The Don't Destroy Bourne End action group was set up to fight proposals by Wycombe District Council to build around 700 additional homes in the village, some on land previously designated as greenbelt areas. Here, the group's leader, Penny Drayton, gives us an update on their fight...

In June 2016 Wycombe District Council announced their proposal to build approximately 700 new houses in Bourne End and Wooburn Green. The developments would be on the greenbelt land of Hollands Farm and an area off Northern Heights above New Road. Also included in the plan is the release of the reserve site of Slate Meadow which is in the flood plain.

The shock of the news has sunk in with most people now, although the anger and disappointment stays as rife as ever. If this plan were to go ahead the entire community would be very badly affected, there's no doubt about that.

With the loss of our beautiful green spaces, the increase in volume of traffic, no suitable infrastructure plans and flooding issues, it could be catastrophic. The population increase could be around 40%. Our village wouldn't cope and would be changed forever.

The community has spoken and sent its responses to the council. The council has acknowledged the huge response that was received, although there has been no satisfactory feedback yet. Q&A sessions were held by the council early September, but unfortunately,

despite every valid and reasoned argument we residents gave, it would appear that they plan to plough on regardless. So the fight goes on!

'Don't Destroy Bourne End' (DDBE) is an action group that was formed to fight this terrible proposal. The group has now got Charity Status under the title of 'Keep Bourne End Green' (Registered Charity number 1169057).

This is a huge step for us as now we can start raising funds which we can then use for professional representation for the fight which may be ahead.

As well as exciting events in planning stages for the new year (like a Winter Ball), we have some immediate fundraising going on too.

We are also looking for monetary donations from anyone who can spare it. We have set up a JustGiving page under the charity's name and we

will also be doing a leaflet drop around the area with a donation envelope and with information on how you can help. Please keep an eye out for this.

We have launched a photography contest. We are looking for photographs of our area which capture the essence and beauty which we all love. Final submissions must be received by midnight on October 16. Please send high resolution photos to photos@ddbbe.online. A minimum of 12 photos will be selected to make a Bourne End calendar for 2017. Individual photos will also be selected for cards.

The calendar and cards will be sold at upcoming events, look out for our stand at the community market and on Christmas Fun Night as well as at other events.

Please continue to support this fight, for everyone's sake. Keep up to date by joining our facebook group

'Don't Destroy Bourne End', visit our website at www.ddbe.online, contact us on email on info@ddbbe.online or donations@ddbbe.online, call us on 0300 302 0866 or tweet us on @ddbbeinfo

Penny Drayton



Village plans for Renaissance retirement homes

Plans to transform an old village centre industrial area by building traditional style two-bedroom luxury apartments have been submitted by Renaissance Retirement Homes.

Wharf Lane Business Centre is the proposed site for 21 apartments with the same number of parking spaces. Great interest was shown in the plans which were displayed at the community centre in August.

Jim Penfold, chairman of Bourne End Residents Association, wanted to see all elevations



before the plans were given their approval. He said later: "Side and rear elevations were not available which will show the way the windows face in relation to existing homes in Southbourne Drive, Wharf Lane and Waldens Close. "But what they propose is a vast improvement on what's there."



Mixed views on apartments...

A new development on the site of the former Railway Hotel (later the Firefly public house) is getting mixed reviews on local social media sites. The modern-style apartments and a house straddling Station Road and Southbourne Drive are a far cry from the traditional building which they replace. But it seems for every person who is unhappy with the design of the nine apartments there is another who thinks they look very smart. Whatever you think they will be ready by the end of October and the estate agent reports great interest.



Target magazine is published by Bourne End (Bucks) Community Association and distributed free to over 5,000 homes in the local area. The distribution network includes Bourne End and Wooburn Green as well as the outlying hamlets of Hedsor, Well End, Little Marlow, Cores End, Upper Bourne End, Wooburn Common and Wooburn Moor.

Bourne End (Bucks) Community Association

The Centre, Wakeman Road, Bourne End, Bucks SL8 5SX
 Telephone: 01628 522604
 Office Hours: Mon - Fri 9am to 4pm
 Senior Administrator: Sue Ambrose

Visit: www.bourneendbucks.com for current information or email office@bebca.org.uk

Editor

Debra Aspinall
 Tel: 07881 558027
editor@targetmagazine.org.uk

Managing Editor & Distribution

Barrie Penfold
 Tel: 01628 525415
 email: managingeditor@targetmagazine.org.uk

Advertising & Production

Barrie Penfold
 Tel: 01628 525415
advertising@targetmagazine.org.uk
 Our advertising rate card is on www.bourneendbucks.com. Click on Community Association, then Target.

Proofreading Christina Martell and Meriel Riseley

Printers

Gpex, Pinstone Way,
 Gerrards Cross SL9 7BJ
 Telephone: 01753 887450



All material appearing in Target is the copyright of Bourne End (Bucks) Community Association. The Editor reserves the right to select letters and reports for publication and to edit for grammar, style and length.

BULL'S EYE

We rely on a wonderful army of volunteers who distribute Target magazine every two months. And for this, Target needs **YOUR HELP.**

Due to sudden illness bundling and distribution of the last issue proved very difficult for the small team. It puts too much pressure on them and **HELP IS URGENTLY NEEDED.**

- * We need one or two extra people who can help once every two months with the bundling of Targets.
 - * We need one or two extra people who are willing to distribute bundles of Targets to the distributors.
 - * We need two or three extra people who are willing to distribute Target on a regular basis every two months.
- If you would be willing to help contact Target distribution on 01628 525415 or email Barrie Penfold at managingeditor@targetmagazine.org.uk

ALSO

Target Advertising needs someone to help the Advertising Manager with a view to taking on the role at some stage in the future. Every help will be given along the way. This is a volunteer role and vitally necessary for the continuation of the community magazine.

We know from the lovely comments we receive from you that this village magazine is appreciated, but times are tough for all printed publications as they fight to survive against the online market. We have some wonderful, loyal advertisers, many of who have supported us for years, but many new businesses go straight to website and digital marketing options. This is sometimes cheaper, but it can't guarantee what we can, that your advert is in a magazine delivered to every home in Bourne End and the Wooburns. If you can help contact Target Advertising on 01628 525415 or email advertising@targetmagazine.org.uk.

AND JUST ONE MORE THING

If you enjoy reading Target or find it useful, it would really help us to continue if you could pay for your issues. It's only £6 a year. All the info is below for you to make a standing order, bank transfer or cash/cheque donation at the community centre. Thank you.

Debra Aspinall, Editor

STANDING ORDER FORM TO PAY FOR TARGET

PLEASE TAKE THIS OPPORTUNITY
 TO HELP TARGET BY PAYING
 FOR THE SIX ISSUES YOU GET THROUGH YOUR DOOR
 EVERY YEAR (recommended price £1 per issue)

STANDING ORDER TO:..... (your bank)

BANK ADDRESS:

DATE:

Please pay to: Co-operative Bank PLC, for the credit of the Bourne End (Bucks) Community Association, account number 65217757, sort code 08-92-99, the sum ofpounds on 1 November 2016 and each year thereafter, until further notice, charging such payments to the debit of my account number.....

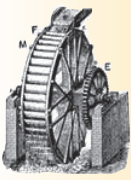
This cancels any previous standing order to the same account.

Name.....

Address.....

SIGNATURE:.....

OR you can use these bank account details to make an online payment



WOOBURN RESIDENTS ASSOCIATION

By Margaret Amos
Secretary to the Association

At a Wooburn Residents' Association meeting this time last year one resident commented how proud she felt to say she lived in Wooburn Green because The Green was looking so attractive with the hanging baskets. We are delighted to echo those comments this year.

Kay, the Landlady at The Red Lion has extremely green fingers and could run a master-class on hanging baskets.

Our thanks also to The Queen and Albert for adding to the colour and to the parish council for providing the attractive hanging baskets.

A new addition to Wooburn Green is Perkys Coffee House. Lucy and Levi, the proprietors, say: "We can offer a friendly, relaxed environment to enjoy high quality coffee and a tasty treat. We have our own roast Costa Rican coffee called Perkup and it is worth mentioning that all our takeaway containers are biodegradable.

"We look forward to being part of The Green scene and thank everyone for their support."

Mark and Michelle at The Village Bakery have been providing locals with wonderful bread, breakfasts, sandwiches and other tasty snacks for a long time, as well as supporting Wooburn Residents' Association.

With the addition of Perkys, residents and those who work in Wooburn Green have even more

opportunity to meet up for a chat and something to eat in pleasant surroundings.

Christmas Lights 2016 around Wooburn Green

During an evening in June a phone call was received from the Police to say that our Christmas lights in the oak tree on the Memorial Green were on the ground.

It was assumed that they had been knocked out of the tree by a lorry.

To replace them it is going to cost Wooburn Residents' Association more than £3,000. However, before the new lights can be fitted, the oak tree has to be pruned because the same thing could happen again.

The parish council has agreed to the pruning, but this needs planning permission from Wycombe District Council and as we know this takes time.

Christmas Lights Celebration – Saturday November 26 at 4.30pm, The Red Lion (provisional date for your diary).

With the oak tree being Wooburn Green's most attractive decoration at Christmas there would be little point in having a Christmas Lights Celebration unless its lights are replaced in time.

We very much hope that the situation will be resolved satisfactorily and the event can go ahead as in previous years.

We have asked Father Christmas to pay a visit to The Red Lion on The Green at 4.30pm on Saturday November 26, to hear what the children would like in their stockings on Christmas Day, and we have provisionally booked the Marlow Ukulele Band to entertain us with Christmas music.

We hope that you will have the opportunity to come along for a festive drink and mince pie, and meet your friends and neighbours.

Please look out for the banners, posters and advertisements locally for confirmation that the event is taking place. As in the past, money raised will go towards the maintenance of the Christmas lights.

Could we ask residents living around The Green that if they plan to put up Christmas lights this year, they aim to put them up for Saturday November 26. Wooburn Green will then look as attractive this Christmas as last year.

Wycombe District Council's Local Plan

Wooburn Resident's Association lodged its comments on the plan to the council, along with more than 3,000 others. It is sincerely hoped that they will take some notice.

The next meeting takes place on Monday November 14, at 7.30pm, in the parish council offices, Town Lane, Wooburn HP10 0PS. **Please note the time change.** All are welcome to attend.

Contact us:

For the latest news visit www.wooburnresidents.org or follow us on Facebook at <https://www.facebook.com/wooburnresidents>.

If you would like to receive our emailed monthly newsletter, this can be arranged through our website.

Sew Sew Pretty

Quality hand-made curtains,
blinds and soft furnishings

Contact Alison on 07747 778678

www.SewSewPretty.com

Alison@SewSewPretty.com

MARTIN VEHICLE SERVICING ADAMS

YOUR LOCAL MOT SPECIALIST

A friendly family run business with

30 years experience

Servicing all cars, new and old also light commercial vehicles.



- General car repairs and maintenance
- Free courtesy car available
- Tyres, exhausts and batteries supplied and fitted
- Latest diagnostic equipment for all makes of vehicle
- Air conditioning service available
- 30 Years Experience



01628 850000

email: info@mavs.co.uk

Alexander House, Wessex Industrial Estate, Bourne End



Support local shops and businesses



We are convinced that building a further 700 houses would be disastrous for the village of Bourne End and the surrounding area. But the proposal by Wycombe District Council is to do just that on sites at Slate Meadow, Hollands Farm and Northern Heights.

So far we have written with our objections to the local plan and we have encouraged everyone, both organisations and individuals, to do likewise. Q&A sessions organised by WDC have been attended, but frankly the answers to serious concerns have been platitudes. Similarly, our views on the effect that this number of houses and their occupants would put on the infrastructure have been ignored or brushed aside.

Now the doctor's surgeries are unable to attract new practitioners. How can you improve Cores End Road, Furlong Road or Hedsor Road? Just three local roads that will be affected. Where in our

already overcrowded schools would future generations of children be educated? We strongly believe that the infrastructure cannot cope with such an increase. Now we need to prove this categorically.

Good planning insists that these problems are solved before any development takes place. WDC planners ignore the fact. Bourne End Residents' Association has decided that something else needs to be done if we are to be listened to by these planners. A new professional approach is required.

After the area-wide consultation WDC were required to produce a draft sustainability document to prove that this area can cope with this increase in the size of population. The public were asked to comment on this draft Sustainability Appraisal.

Initially we were given just over two weeks, but this was extended to just over four weeks.

At this stage we decided that the residents' association needed to employ the services of a professional planning consultancy to talk for us. They talk the same language as the WDC officers and they are familiar with all the planning requirements and government guidance.

We instructed a firm from Abingdon who produced what we believe to be a very professional response which was presented to WDC by the due date.

Our next objective is to produce a similar response

by the same company to look at the areas which are designed to be removed from the Green Belt. The questions to be considered are many and certain criteria needs to be met before land from the Green Belt can be released for housing needs. What criteria? We don't know. But the professional planners do. Their response will ensure that WDC is abiding by the rules.

After that we are not sure what our next step will be, but we will always keep you informed and my telephone number is at the end of this report. WDC are saying that they will publish their New Local Plan after Christmas and again, this is for consultation and we can make our views known.

On a separate issue I can report that at last the public inquiry into an order to create a bridleway on the old railway line from Cores End Road to Manor Farm in Wooburn Green has been completed.

Combined it took a total of six days. We now await the decision of the Planning Inspector. Clearly most residents of Bourne End and Wooburn will hope for a positive result which will create an environmentally friendly route between our two villages.

Once again thank you for reading this article. The views expressed are mine alone. If you have any queries or thoughts on these issues, please feel free to give me a call.

Jim Penfold (01628 525415)

Bourne End Home Security Systems Ltd.

DOMESTIC AND COMMERCIAL
INTRUDER ALARMS
CCTV
INTERCOMS
SECURITY LIGHTING
FIRE ALARMS

- Local privately owned company
- SSAIB insurance approved
- Audible and monitored systems
- No binding contracts
- Existing systems maintained and repaired
- 20 years experience
- NACOSS NSI Gold monitoring

Your local security expert
For a FREE survey, contact us today!

01628 520162
rogerelam@behss.co.uk
www.behss.co.uk

8a The Courtyard
Furlong Road
Bourne End
SL8 5AU

Secondary Maths Tutor

Qualified Maths teacher in Bourne End for one to one help.

- Common Entrance
- Key Stage 3 and GCSE
- AS/A Level

T: 01628 531521
E: kath.acres@spadeoakfarm.com
www.spadeoakfarm.com/Tutors

CHATTELWORTH LIMITED

CONSTRUCTION
All aspects of general building works:
*Extensions/Alterations *Renovations *Carpentry/Joinery
*Brickwork/Paving *Plastering *Commercial & Domestic

FULL DECORATING SERVICES
*Painting *Internal/External *Wallpapering *Commercial & Domestic

GENERAL
*Roofing/Slating/Felting *General Maintenance

PURPOSE MADE JOINERY
*All aspects of purpose-made joinery from our own in-house workshop

MONARCH windows, doors & conservatories
also *Plastic Fascia *Barge Boards & Cladding *Guttering
A first class service at very competitive prices, call now for a no obligation quotation

*A members of the Federation of Master Builders and
FMB (Masterbond) Warranty Scheme*

Chattelworth Works,
95a Queens Road,
High Wycombe, Bucks HP13 6AH

Tel/Fax 01494 461544

saxons

**2 Furlong Road
Bourne End
Bucks
SL8 5DG**

Come and visit our London trained professional stylists working to the highest standards

Whether you require advice on cutting or colour techniques Saxons is the salon to be seen at!

Open Monday – Saturday
9am – Late (by request)
Saxons welcomes your call
01628 524255

A. Stride



Heating & Plumbing

Roofing

General Building

Painting & Decorating

Replastering & Guttering

Service

Estimates Given Free

Telephone: 01494 440219

Mobile 07973 439781

THE
WALNUT TREE
BOURNE END

OFFERING FRESHLY PREPARED
PUB FAVOURITES, SUNDAY ROASTS
& DAILY SPECIALS

WARMING LOG FIRE

3RD ANNIVERSARY PUMPKIN COMPETITION
(31ST OCTOBER)

CHRISTMAS FAYRE & TAPAS
(FUNDRAISING EVENT - 8TH NOVEMBER)

PRIVATE DINING & FUNCTIONS
(BOOK NOW FOR FESTIVE CELEBRATIONS)

01628 532417

WALNUTTREEBOURNEEND.CO.UK

**For Hire - Two Halls
& kitchen facilities**

Ideal for children's parties; aerobics;
dancing; ballet classes; meetings, etc.

Contact Ann 01628 526865

or Muriel 01628 523622

Ample parking @ Cores End Church

ABSOLUTE CLEANING

Windows & Gutters

Domestic & Commercial

Ring Mark Holt

0791 2985500

HUGHES

BUILDERS MERCHANTS

CALL IN FOR A FRIENDLY, PERSONAL
AND LOCAL SERVICE

**BRICKS, DIY SUPPLIES, BLOCKS,
AGGREGATES, PAVING SLABS,
TIMBER, CALOR GAS, PAINT,
SALT and COAL**

01628 522022

24 Whitepit Lane, Flackwell Heath, Bucks.

11 PLUS TUITION

For the 11+ Transfer Test

Experienced primary teachers in
Bourne End

01628 528455/299856

www.11plusacademy.com



Another Answer

Books and Accounts

Efficient, Friendly and Local

TEL: 01628 530805

EMAIL: sylvia@anotheranswer.co.uk

First Floor, Bourne House,
Cores End Road, Bourne End SL8 5AR

www.anotheranswer.co.uk



Sylvia Boothill is licensed and
regulated by
AAT under licence number 4675



Practice 4982



BOOKKEEPING • PAYROLL • VAT • TAX RETURNS • ACCOUNTS

We'll open it now!

**SECURE
HOMES**

**30 MINUTE
RESPONSE**

UPVC LOCK SPECIALISTS
All Domestic
& Commercial Lock Problems
Solved by your Trusted & Reliable Family Business

• POLICE RECOMMENDED AND INSURANCE APPROVED LOCKS SUPPLIED & FITTED
• ALL TYPES OF DOOR & WINDOW LOCKS FITTED, OPENED, REPLACED & REPAIRED

- UPVC
- CHUBB
- YALE
- UNION
- ERA
- LEGGE
- ASEC
- VIRO
- ABLOY
- CISA
- ASSA

01628 528433

Or if line busy: MOBILE

07831 487222

www.allsecurehomes.co.uk

10 Thames Close, Bourne End Bucks SL8 5QJ

FREE Advice, Surveys & Estimates



Chubb Locks Yale GE GE UNION



We will give you
a competitive
FULL QUOTE
before we start any
locksmith work

AAAAA ALL SECURE HOMES

TALK TO A LOCAL LOCKSMITH ... not a Call Centre!



**Arnold
Funeral
Service**

21-23 Little Marlow Road **Marlow**

01628 898866

891 London Road, **High Wycombe**

01494 472572

- Traditional and Alternative Funerals
- 24 Hour Attendance
- Pre-Payment Plan



www.arnold-funerals.co.uk

Please support Target advertisers



Marina Life with Peter Osborne



Can someone advise me as to where the Summer has gone? It seemed to be Spring yesterday and now it's Autumn? Maybe it's my age? Currently we are enjoying an Autumn heat wave that will no doubt come to an end with thunderbolts and lightning very, very frightening.

Our equipment worked well this season with only a few minor hiccups with the tug and our sewage pump, which is used to empty the sewage from the boats. Our pump will occasionally decide that it doesn't want to work.

After the boys carry out all the obvious immediate checks (such as looking for blockages) and fail to fix it, we call the pump company who respond very fast and administer the appropriate medicine or surgery. We had one such breakdown this Summer, but thankfully we only lost one customer who came back on another occasion.

I cannot remember the pump being out of action for more than 24 hours other than for planned maintenance. It is important that we keep it active as other pumps on the river seem to break down quite frequently and remain inactive for a very long time.

We have the confidence of river users that our facility is always working so we tend to get the majority of the business from our part of the river. Yes, you are correct, we are famous for our sewage!

It is widely acknowledged that the season did not get off to the best of starts, and there has not been as much boat usage as in previous years. So why are we at full capacity with

boats and why are they still being sold and bought?

It's been a funny old year, a good one I may add, but a little strange. Although the river would appear not to be as busy Chaos and Matty have been much busier this Summer carrying out work on boats.

It's usual during Summer not to have boats out on the 'hard' but this season we've had boats out most of the time. Not only does this annoy the boys as they don't get their usual rest, but it also plays havoc with their senses and confuses their brains as to what season it is. I guess in the height of the Winter they'll think it's the Summer. It will be interesting seeing them hard at work in the snow with their tops off.

We had a film crew down at the marina and also over at The Bounty filming a programme fronted by Ben Fogel. It was about walking dogs in the locality. Rocky will be on the TV in January (Channel 4) enjoying himself at The Bounty along with many other local canines. We are still waiting for the royalty cheque. No sign of it yet.

Apparently the programme will be aired in the new year as it's a 'happy' programme and that is what the viewers like after Christmas to cheer themselves up. I would suggest that they try a pint of Rebellion myself, preferably the Roasted Nuts.

While the film crew were in the area of the marina I ensured that Chaos and Matty were out of the view of the cameras. They are not yet ready to be let loose on film to scare the nation.

water levels being too high and there is a rain storm due about the time the work is to commence. Oh dear. It will be fun to see how that pans out.

Some people may have noticed that they had difficulty in obtaining Calor Gas this Summer for their barbecue. We have been pulling our hair out as we had great difficulties in getting hold of certain bottles to sell. There was a shortage of the patio gas (the green bottles).

Phone calls were even made the CEO of Calor, although I couldn't get hold of him and had to make do with a minion. There are only a few plants around the world that can make these bottles and Calor had some on order from China. I hear that this delivery was due in March, but only arrived in July. Now you know, bottle shortages create a gas shortage, and there's an increased demand as there are so many more gas barbecues about. I have gone back to charcoal and have never suffered a delay in fuel supply.

Over the Winter months the Environment Agency undertake various repairs to the river banks and locks which usually entails locks closing down for a period of time. This year the only lock to close in our part of the river is Marlow which will be closed between January 9 and February 10 to maintain the lock in good working order. Even in Winter (should the river not be in flood) boaters still venture out so if there are too many lock closures and for too long you can imagine the effects on our revenue. This should be a happy Winter for boaters and marina staff alike!

I have fired Calvin the Saturday lad and Steve the Car Park. Well, only until next April when I hope they will both be back with us. They fulfil an important role and we appreciate having them here. Thank you. The boys like this time of year as we switch to our Winter hours!

Until the next time
Peter Osborne, Marina Manager

Little Star

0-4 Years
Live Music & Movement Sessions
@ Wooburn Green Children's Centre
@ Bourne End Library
Visit the website for more details.

www.littlestar.me.uk kath@littlestar.me.uk 07930 675 606



In the last issue I mentioned the works carried out by the water company on the local storm drain. Apparently this work failed and they are to attempt the work again in a few days time. This will be interesting as the works failed due to ground

Classic Beauty

for
Beauty treatment from fully qualified and caring therapists
Using top quality products from
Pridara Skin care, Caci non surgical facial and body treatment
Jessica manicure and pedicure
The unique and hygienic Phd waxing system
Open 9am until 8pm most nights
17a Soho Mill, Wooburn Green Tel: 01628 850688

HOME PC HELP

- All PC/networking problems
- No callout charge
- No fix - no fee
- 35+ yrs experience

For friendly, personal advice call

01628 630096
or 0778811 3279
(7 days inc evenings)
www.homepchehelp.org

Colin's Garden Services

Tel: 07884 262871

Garden

Grass Cutting	Hedge Cutting
Maintenance	Fencing
Patios	Turfing

Services

Competition winners treated like royalty...



On HM The Queen's actual birthday, April 21, Bourne End Motor Company started a competition to celebrate our monarch's 90th birthday with the prize 'to be treated like a Royal for the day'. The winners were to be picked up in a Rolls Royce and taken to Cliveden where the hotel had kindly supported the competition with tea for two in their historic country hotel. The prize also included a river boat cruise along the Cliveden Reach. To enter you had to answer 10 questions about either Cliveden, The Queen or Rolls Royce with a tiebreaker question on why the winners should be treated like a royal for the day.

Competition organiser, Nick Pink of Bourne End Motor Company said: "Numerous entries were received and not everyone got all of the questions correct, but those who did were then subject to a bit of scrutiny as it would appear that some cheeky person had entered several times with the same answers. For such a great prize you can't really blame them!"

"Eventually it was decided the winner was Jessica Dale-Gough who had entered the competition with the intention that if she won, she wanted her parents to enjoy the day as they had a tough year."



Arrangements were made for Karen and Michael Fellingham to be collected from their home. True to form of the British weather and of so many royal occasions in the UK, it was not the best Summer's day. But in true British fashion the winners dressed accordingly for their trip on the flagship of the Cliveden flotilla Suzy Ann.

Built in 1911 and restored for Cliveden in

1986, Suzy Ann won first prize for the best professional restoration of a vintage boat at the Henley Traditional Boat Rally. Fortunately she has a canopy.

The Fellinghams spent three hours enjoying their afternoon at Cliveden before being taken home in the Rolls Royce. Hopefully it was a day to remember in what has been a special year for Her Majesty.

Our photos show (top) Karen and Michael Fellingham arriving at Cliveden House Hotel. Left to right Alex Bew (Director of Sales-Cliveden), Karen Fellingham, Michael Fellingham, Nick Pink. And above, before setting out on their river cruise.

Apology:

In Past Times (Target August/September issue) with regard to signalman's son Bob Doughty, it was 'lightning' which caused the fire under his bed and not lighting as stated. Also the new car every week was only for a short period. And our apologies to son Anthony who works for Nissan and to son Robert who works for the company who now produce the modern equivalent of Yellow Pages. Many thanks to Bob for his help.



The Last Viceroy
Fully Licensed & Air Conditioned
Royal Indian Cuisine



There is a wonderful selection of mouth-watering dishes on the comprehensive menu at The Last Viceroy.

They include coconut lamb, apricot lamb and cashew nut chicken alongside starters, specialities, traditional Balti, Tandoori and Biryani dishes as well as delicious seafood and vegetarian choices. The friendly and attentive staff will advise you if you are unsure about any dishes on the extensive and varied menu.

You can opt for the Khas-e-Viceroy at £24.95 per person where the chef will prepare a mixed starter, main dishes and side dishes with rice and bread. Or choose the chef's special dishes which are cooked with fresh ground spices and prepared by a slow cooking method to bring out the delicious flavours; six hours' notice is required for these meals.

The restaurant is well-established, having opened 28 years ago. Its cuisine attracts regulars and newcomers alike and its striking interior is divided by floor-to-ceiling pillars, making The Last Viceroy an ideal venue for a cosy dinner for couples or large parties. Open for lunch, dinner and take-aways seven days a week.



74 The Parade, Bourne End SL8 5SS
01628 531383 / 530798
www.thelastviceroy.co.uk



Grass cutting in the parish

Our groundsmen continue to cut the grass in the parish. We think they have done a great job so far in keeping all the roadside areas cut back despite the fact that this is the first year they have had to do them after the parish council agreed to take on devolved services from Bucks County Council.

The recent short heatwave helped to slow the grass growth down which has given them a bit of breathing space and a chance to catch up on other jobs that need doing.

The weeds along all of the roadside pavements in the parish have also been sprayed. It was suggested that Shane carried a spray container of weed killer and walked the parish, but it was thought that his legs were short enough so he drove around and sprayed them instead.

When he had finished he had clocked up a very impressive distance of 208km (129 miles) in eight days. This again is all part of the devolved services we have taken on.

Areas in 40mph zones and above are still maintained by Bucks County Council and should be reported to them via their website www.buckscsc.gov.uk under the 'streets and transport' section. Follow the instructions and you will find their details if you scroll down to the bottom of the 'Council Contact Details'. This takes you to their 'report a problem' page and you can use the interactive maps to pin point the problem area. Alternatively you can call them on 0845 230 2882.



Bed and Breakfast

THE OLD COTTAGE
HEDSOR ROAD
BOURNE END
SL8 5EE

www.theoldcottagebourneend.co.uk

Tel: 01628 521348

Mobile: 07796 938369

stacey@theoldcottagebourneend.co.uk

MARTIN'S Maintenance & Plumbing

Kitchens Bathrooms
Interior decorations
Carpentry & cabinetmaker

Mobile 07725059321

martinwhite26@aol.com

Ponds

Both of the ponds have now been refurbished and the finishing touches are being applied. The rubbish will be removed from the Farm Wood pond area and a new fence has been installed on the hillside. Gravel has been laid on the path on the flat area.

Please do not throw rocks and sticks into the pond for dogs to fetch as the pond edges still have to establish. By allowing dogs to run in and out of the pond the edging soil is being disturbed which could lead to the liner being damaged.

One of our groundsmen has already had to speak to a member of the public about this. We would appreciate your consideration when walking your dog in this area.

We have had a few issues with the pond in The Warren, notably the green algae which we are addressing (we did think to ask Brazil if they could advise us as they seemed to have the same problem with the Olympic diving pools, but decided we would try our ideas first).

We apologise to the residents of Wooburn Manor Park for the inconvenience of having the pump working close to their home. It was used to pump clean water into the pond. The pond will slowly stabilise over the next few months and we expect it to look a lot better next year.

Allotment judging

Both sets of allotments have now been judged. Councillors Margaret Marshall, Mike Balbini and Sue Wagner have taken time out of their busy schedules to meander through the allotment plots searching for the often elusive yellow number marker to confirm they have found the plot they are looking for.

Plots are judged on three criteria, general appearance, quality of produce and range of produce. Marks out of ten are given for each criteria and totalled up to give a final score.



HAND MADE FURNITURE

Architectural woodwork,
furniture, antique
restoration, panelling,
staircases, gilding,
lettering,
woodcarving,
churchwork,
sculpture, interior design
and free advice.

LILLYFEE WOODCARVING STUDIO

Lillyfee Farm Lane, Wooburn Common,
Bucks HP10 0LL
Tel: 01494 671690

Studio open for visits by appointment

WOODCARVING COURSES

Take a new direction and create beauty under the guidance of experts. Call the number above for dates and details.

Winners will be notified early next year and invited to pick up a framed certificate at next year's Annual Parish Meeting.

Short & Sweet

Hopefully those of you who regularly walk in our open spaces have noticed the wild flower areas that have been planted. We have been getting some great feedback about them so, as an initial experiment, it has been very successful. With this in mind we will be planting further areas in the parish next year.

We are in the process of installing CCTV in Wooburn Car Park which should be up and running by the time *Target* goes out. The cameras will cover both sections of the car park.

The new edition of our Parish Guide is currently under review and when the final draft copy is ready it will be sent to the publishers for printing. This is a yearly guide and will be delivered to all the homes in the HP10 and SL8 5 areas by Royal Mail within the next few weeks.

Meeting Dates 2016:

Full Council: October 25, November 22
Open Spaces, Allotments & Burials: October 4, November 1
Planning, Highways & Lighting: October 19, November 9 & 30
F&GP: November 8

All meetings start at 7.30pm

Normal Parish Council Office opening hours are from 9am to 5pm each day. Please call 01628 522827 if you have any queries, alternatively email the office at clerk@wooburnparish.gov.uk or visit our website for information on www.wooburnparish.gov.uk

RENTAL NEEDED (six months contract)

**SMALL COTTAGE OR FLAT
(must be dog friendly)
Central Bourne End preferred
Ring Denise on 01834 871209**

Sick PC ?

Misbehaving Laptop?

Visiting support for your
Computer problems.
'Silver-Surfer' & Saga
generation,
assistance & tutorials.

Jonathan - 01628 486712

www.ComputaSolv.co.uk

**"Fixing your computer
problems"**



A great row and record for Naomi Riches MBE

Over a September weekend, paralympian Naomi Riches MBE, set out to row the 165 miles from the source to the mouth of the River Thames.

Her aim was to do it in under 50 hours, so no time to sleep. The end result would achieve the record and be listed in the Guinness Book of Records.

With very limited vision 33-year-old Naomi was instructed along the way managing to avoid bridges, river users and all other hazards.

As a single scull rower Naomi was supported by local rowing clubs who were delighted to be there and look out for her. Her team was fantastic.

Events were staged along the river to give Naomi a cheer as she rowed by. At the Upper Thames Sailing Club members of the Rotary Club of Bourne End and Cookham organised a barbecue, live music and lots more. It was a great afternoon with a huge cheer for Naomi. Our photo shows her rowing past The Bounty.

Her final time, strictly for the record, was 47 hours and 59 minutes. Congratulations Naomi.



From the ground up
a helping hand in the garden

Local garden design, planting & maintenance service - 07863 735786



Raising the standard in domestic cleaning

- * Regular cleaning, weekly, bi-weekly or monthly
- * End of tenancy cleans
- * Spring cleans
- * Quality, vetted staff with smart uniforms
- * 1st class oven and carpet cleaning service

Call Jenny or Chris on
01628 521497

www.casa-fresco-cleaning.co.uk



Aztec heating and plumbing

Repairs to all Gas Boilers & Servicing Contracts

Also General Plumbing Repairs

Central Heating, Pumps, Valves, Timers & Programmers

Tel: (01494) 440219 home

Tel: 07973 439781 mobile

Tel: 07831 563477 mobile

SAMSON WINDOWS & DOORS

Designed to look good for a very long time



www.samsonwindows.co.uk

Tel: 01628 524469

We have been in continuous trading within the local community for over 25 years. We supply and install a range of market leading windows and doors manufactured to exacting standards of quality and performance and installed to the highest levels of finish and workmanship. More than 76% of our work is secured by referral and recommendation.

We do not believe in the hard sell, nor do we offer discounts for quick decisions. Our quotation is offered without obligation and discussed without insulting your intelligence. You will find it extremely competitive.



- o A Rated PVCu windows and doors
- o Timber alternative woodgrain windows
- o Authentic style sliding sash windows
- o Composite entrance doors



AS GOOD AS NEW



Mobile Bodywork Repairs

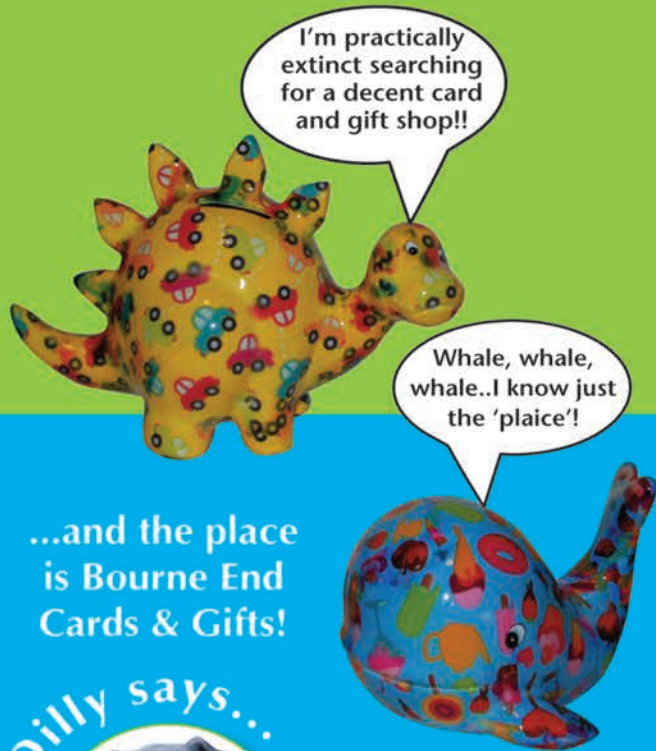
DAMAGED YOUR CAR?
Scuffs, Scratches & Dents

Call Malcolm now for a free quotation!

Office: 01628 532586 Mobile: 07786 482262

Bourne End Cards & Gifts

These colourful, collectable money boxes have proven great gifts for Christenings and new arrivals and would be the perfect present for Christmas!



I really hate seeing empty shops, don't you?

PLEASE, help us keep Dilly happy...



19 The Parade, Bourne End, Bucks SL8 5SB
Telephone: 01628 521509
Email: tony@bowlerwright.co.uk



Bourne End

CHRISTMAS FUN NIGHT

Friday December 2

Bourne End's Fun Night is getting bigger and better every year, with visitors streaming in from near and far.

This year's late opening and charity fun night will again be held in The Parade and Wakeman Road from 5pm on Friday December 2 all kicking off with a light switching ceremony.

The shops and businesses of Bourne End, the community association and the Rotary Club of Cookham Bridge join forces to stage this annual Christmas get together and, thanks to the generous funding by Bourne End businesses and villagers, the Christmas lights (including the winning children's light) will once again be shining brightly throughout the event.

Many shops will be open for retail therapy and to offer drinks and seasonal snacks to add to the festive cheer. Roasted chestnuts from the scouts and generous donations of sausages, buns, onions and charcoal from Bourne End's butcher, baker, Chinese restaurant and hardware store will ensure that the famous Bourne End hot dogs will be available. Plus there'll be free samples from Rebellion brewery.

There'll be a lot going on to entertain the whole family. Santa will be in his grotto (with a huge tombola) in the Bourne End Motor Company with his reindeers and local school choirs will be performing.

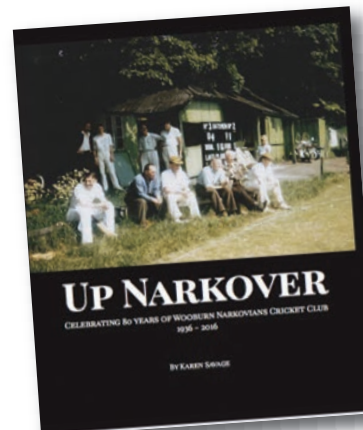
A mini funfair and a bouncy castle will be on The Parade and the library will be buzzing with homemade craft and produce stalls, face painting and yet more mulled wine. Hall Place Vets will have a display of animals.

In addition there will be all manner of stalls around the village selling gifts and running fun games hosted by local organisations and Youth Enterprise groups.

Once again we thank our local councils who have agreed to free parking in Wakeman Road Car Park all day on Friday December 2. There is so much to see and to do, so come down to The Parade and enjoy a festive evening with family and friends.



And all for the love of cricket



Cricket has a great tradition in Wooburn Green. Men in white on the green turf is village cricket as it has been painted and photographed for decades.

Howls of anguish, cheers of delight and, of course, polite clapping the other side all play a part in the scene.

After 80 years, the story of village cricket in Wooburn Green now has someone to detail how it is, and of course, how it was.

Wooburn Narkovians Cricket Club celebrate their 80th anniversary this year and to mark the occasion Karen Savage has written a club history, reprinted score cards, delved below the surface for little known facts and come up with a book entitled *Up Narkover*.

In the book Karen explains the title, the club name and what it's like to be a cricket watcher from a very early age.

Karen never doubted her devotion to the game – it started at her mother's knee watching the high balls going out to the boundary and low ones just skimming the ground. It continued when she dated a cricketer and carried on as she married the same cricketer and their children were taken to watch the Narks.

Village cricket was one of the summer activities enjoyed by the wealthy. In Wooburn it started with the Gilbey* family living in Wooburn House and the formation of Wooburn Narkovians Cricket Club in 1936. The book, with more than 200 full colour pages, contains eight decades of history as well as facts and figures and lots of photos.

The book is an ideal read for cricket lovers and locals alike. Priced at £15, with all profits going to the cricket club. To get a copy you can contact Karen Savage on 01628 529216 or e mail savage.karen@btinternet.com

*Famous producers of Gilbey's Gin



Bourne End Junior Sports Club

WE NEED VOLUNTEERS!

Since 1970 BEJSC has been providing generations of children and young adults with an avenue to explore sport and team leadership. We still offer eight different sports for ages six to 18+ years in our purpose-built Sports Hall in New Road, plus other venues.

We understand how busy modern life can be (we're human too) but to continue this ethos, the Board of Trustees is looking for members of the local community to step forward and volunteer a small amount of their time to help a wide variety of areas of the club.

Contact the BEJSC office (01628 528110) if you are interested.



Find us on Facebook

BEJSC Sports Hall, New Road, Bourne End SL8 5BW
Registered Charity No 266590



Halloween at The Walnut Tree

This year Halloween falls on a Monday and chef-proprietor Chris Grego, and his wife Grace, are planning to celebrate their third year at The Walnut Tree, Bourne End, with what is becoming a new Bourne End tradition – their pumpkin carving competition.

There'll be prizes for under-10s, 11-16 and 16 to adult and you can pick up an entry form from the pub. Look forward to an evening of fun from 5pm-7pm on October 31, when the judges (including Barrie Penfold and Debra Aspinall from *Target* magazine) will award prizes and there will be a special spooky children's menu available. Pumpkins can be dropped off for display from October 28.

Following on from recent charity activity, The Walnut Tree will also be hosting their annual Tapas and Christmas Fair on November 8 with a range of stalls to support Starfish Swimming Club. The Maidenhead-based club is a competitive swimming club which aims to give children and adults with learning difficulties the opportunity to improve their swimming capability and to realise their full potential as a swimmer. www.starfish-swimming.org.uk/

D&BDIGITAL
ENGAGING DIGITAL EXPERIENCES

**WEBSITE & APP DESIGN
FRONT & BACK END DEVELOPMENT
ECOMMERCE . SEO . SOCIAL
WE CRAFT EXPERIENCE ONLINE**

CALL 01494 853153 EMAIL damien@dandbdigital.com VISIT www.dandbdigital.com



CROWDEN
• COACHWORKS LTD •



- Car Body Repairs •
 - Garage Services •
 - Accident Repair Services •
 - Insurance Repairs •
 - Paint Spraying & Much More •
- We repair all makes and models and also deal with all insurance companies**

5A The Green, Wooburn Green, High Wycombe, Bucks HP10 0EE

Tel 01628 526463

www.crowdencoachworks.co.uk

Support your local craftsmen and traders

At home is exactly where they want to be

When Mavis and John Carter celebrate their diamond wedding in October it will also be a celebration of their 60 years in the same bungalow in Blind Lane. So it will be a double event that has loads of great memories for the local couple.

Mavis told *Target* that it's where they both love to be, pottering around, feeding the birds and making a safe habitat for the wildlife.

Today they have homes all around them, but back in 1956 things were very different.

"We were surrounded by open country and orchards," Mavis explained. "Now we have side roads off Blind Lane, it's on a good bus route and there's a lot more traffic".

Their bungalow was built by Les Baldwin and finished in the August of 1956 with their wedding planned for the September at Wycombe Parish Church.

For both John and Mavis it has been a marriage based on familiarity, as they were childhood friends in Loudwater, where they were born, and then in Wycombe Marsh.

Mavis Elizabeth Florence Keen was 21 when they became engaged while Hotspur John Carter was five years older. His name comes from the Shakespeare character in Henry IV part 1 but he has always been known as John.

After the end of the Second World War Mavis started a one-year course with the Government-sponsored National Institute of House Workers. They were set up all over the country with the aim of educating young girls in the art of running a home and family. While at Kendra House Mavis was one of a number of girls who were photographed for The Lady. She made great friends with a girl from

Norwich and they still communicate today. While Ellen went on to become a nanny, Mavis had met John and decided to return to Wycombe where she took an upholstery job with Castle's in the town.

Daughter Lesley and son Michael (or Nodge as he became known by everyone) completed their perfect family. John was amazing with engines and worked as a mechanic. Mavis looked after the family and started creating her garden oasis for local wildlife. And, whenever possible, there was a chance to see her hero Frank Sinatra.

Mavis says there is no one like the crooner and she has been faithful to Sinatra for years with pictures, china and various memorabilia around her home.

Sport first came into their lives with brother Mike Keen when he was good enough to become a professional footballer and played for Queen's Park Rangers. There are stories about sleeping with the League Cup under the bed in case it was stolen after it had just been presented.

Mike Keen eventually went into management and was at Watford with Elton John for a short while. Mike was well liked and frequently described as a 'real gentleman'. He was very enthusiastic about young people playing football and started the Mike Keen Cup for U14s at Flackwell Heath Football Club. Sadly he died aged 69.

With the family grown up Mavis' social experience inspired her to look for a part time job and eventually she started as a lunchtime barmaid at Burnham Golf Club. She loved seeing people and getting to hear all the news about their families. She stayed there for

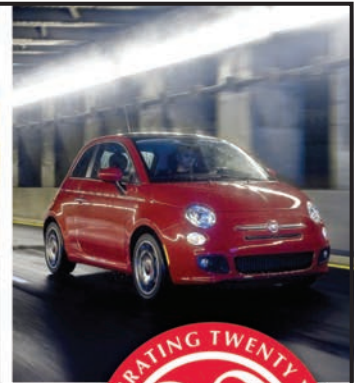
25 years until retirement. "I didn't know anything about golf," Mavis says with a chuckle, "but I knew where the rule book was kept if anyone wanted it!"

Together they were both very enthusiastic, and finally honorary members, of the Dunkirk Veterans. They took trips to the various sites, memorials and graveyards, but now John says that with so many of them gone it has become a very small group.

Keen dog lovers, they support the dog rescue centre at Stokenchurch with fundraising and Mavis knits toys for their regular sales. Whenever he can you will find John tinkering with an original mini in the garage.

Both John and Mavis agree that it has been a fantastic life. They are looking forward to the celebration party in early October when all the family get together.

Mavis told *Target* that they really had to struggle all those decades ago but their home made it worthwhile and is exactly where they want to be.



BOURNE END MOTOR COMPANY

Bourne End Motor Company was established in 1994 and in that time we have built a reputation for offering the personal and professional approach normally only found in the more prestigious franchised dealerships.

We have become recognised as one of the leading specialists in low mileage, privately owned cars with full service history. Most of these cars are between six months and four years old. As well as your regular family cars ie. Ford, Vauxhall, Fiat, Mini etc. we also sell luxury brands such as BMW, Mercedes.

Over the years we have built up a vast range of suppliers and through these we can source almost any make and model of car, all of which offer a significant saving than those offered by the larger Franchised Main Dealers whilst still matching their standards.

WAKEMAN ROAD • BOURNE END • BUCKINGHAMSHIRE • SL8 5SX • TEL: 01628 533 222 • FAX: 01628 530 264

- Local Family Business
- All Cars HPi Checked with Service History
- Computerised Stock Locator System
- Most Makes/Models available
- At least six months Warranty on all vehicles

TEL: 01628 533 222
WWW.BEMC.CO.UK

Contact the Elderly -VOLUNTEER NEEDED

Contact the Elderly Bourne End needs a volunteer group co-ordinator for a few hours a month to arrange tea parties. Our guests are 75 into the 100s and really look forward to this regular outing, one Sunday afternoon a month, for afternoon tea in a local family host's home. Our volunteer drivers collect their guests, take them to the tea party, join in, and take them safely home afterwards. Often this is the only social outing that our guests partake in.



If you would like to make a difference in your community and enjoy the company of our guests please contact Suzan Hyland, National Volunteer Support Officer, Contact the Elderly on 0207 881 2361. Or email: suzan.hyland@contact-the-elderly.org.uk or contact the current co-ordinator Jan Moorhouse on 01628 522729.

Our picture was taken at the group's August tea party when they had a tour round a local farm. It shows Janet, Grace, Olive and Clare in a trailer.

Crafty goings-on in Bourne End

Calling all children and young people aged 4 to 16 years. Now is the time to show off your best drawing, painting, collage, model, photograph or item of needlework as the fourth annual Bourne End Junior Craft Show takes place at Bourne End Library on Saturday October 15.

As in previous years it is free to enter as many items as you like and once again, thanks to generous support from local businesses, there are many arty crafty prizes on offer as well as rosettes for first place and even a few trophies up for grabs. All you need to do to enter is bring your

entries along to the library in Wakeman Road between 3pm and 5pm on Friday October 14 and between 9.30am and 11am on Saturday October 15 – there is even free parking for the day on the Saturday to help with this.

For full details please see the printed schedules available from the library and other local outlets or croalls2005.wix.com/bejuniorcrafts.

Any craft item which is your own work may be entered – if it doesn't exactly fit our class list we will find or make a suitable class for it.

Also all classes are split into age divisions so there are plenty of chances to win.

We hope to see you there!



WALK IN FLU CLINICS

Be prepared for winter with our walk in clinics at Hawthornden
Saturdays 8 and 29 October
8.30am to noon NO APPOINTMENT NECESSARY. Adults only, please.
Children's clinics will run separately
If these dates are inconvenient please ask for your vaccination when you visit the surgery from October onwards.



No. 25

Specialists for Mother of the Bride/Groom, Ascot, special occasion and cruise wear. Accessories too...

25 The Parade, Bourne End, Bucks SL8 5SB

Tel: 01628 528877

Open Monday to Saturday 9.30am to 5pm

See website for Sunday Open Days

www.No25ofBourneEnd.co.uk

Solicitors Buchananans

Divorce | Conveyancing | Commercial | Employment | Wills | Probate | Litigation | Elderly Client

Buchanans Solicitors can assist with all the above and more.

Buchanans Solicitors is a friendly, modern law firm which offers a broad range of services and aims to deliver clear advice promptly and cost effectively.

Call us for a free, no obligations chat on 01628 810 707

Swains House, Swains Lane, Flackwell Heath, Buckinghamshire HP10 9BN
office@buchanansonline.com
www.buchanansonline.com



Authorised and regulated by the Solicitors Regulation Authority (No. 00469169)

Matrimonial issues?
Please contact our experienced family solicitor
Nathalie Wespieser
in confidence

Little Marlow Parish Council

By Emma Marsden, parish clerk

A lovely summer!

I think we can all say that the summer this year has been better than previous years – certainly the school summer holidays have been great. It was a huge relief for the Little Marlow Fête that after two years of washouts the sun shone on August Bank Holiday Monday.

Best Kept Village 2016

We were delighted that Little Marlow Village received a High Commended Certificate from the judges of the Annual Buckinghamshire Best Kept Village. Well done to all residents.

Tree Management

As Autumn looms, the maintenance of our trees within our parish comes to the fore. The council undertook an extensive tree survey with Wycombe District Council to look at comprehensively managing its trees in the parish. We now have a schedule of works for the next 18 months.

The first phase of this work will be within the grounds of Abbotsbrook Hall where some dead-wooding and crown-lifting will take place.

Working in association with Active Bucks

I am sure most of you have heard about the latest craze of Pokémon Go. It is a game where you use your mobile phone to locate a Pokémon and collect them. Active Bucks have introduced a new game for the local area. All you need is a smart phone then download the free app - Mobile Adventure. The 'Treasure Hunter' game starts in the car park in Coldmoorholm Lane just past the Spade Oak Pub.

Using your phone you can unlock each hot spot location and complete some fun challenges along the way. It's a great fun activity for all the family and you get to enjoy the local scenery.

New Green Path on Wycombe Road (C100)

Hopefully by the time this article has been published the new Green Path will be in place on the Wycombe Road. This will provide a rural path for pedestrians to walk safely between The Rebellion Brewery junction up to Pump Lane North – near the Three Horse Shoes Pub.

Sheepridge Lane

There have been many safety initiatives completed this year which make this road safer for traffic and pedestrians.

We are delighted that the final part of the existing green path will be completed.

This is the section of road from the cemetery entrance to the roundabout on the Marlow Road. This will complete a safe footpath from Flackwell Heath down to Little Marlow and Well End.

The parish council would like to thank Wycombe District Council for allowing some Community Infrastructure Levy (CIL) funding for this project.

Little Marlow Relief In Need Charity (LMRINC)

You may or may not be aware of the old charities that exist in Little Marlow. The first was set up in 1633 by William Alanson, the second in 1847 by Sir George Nugent and the third in 1863 by Margaret Birch and the fourth in 1915 by the Coal Club Charity.

In 1974, these charities were amalgamated to become the Little Marlow Relief in Need Charity.

Monies were originally intended for clothing, coal, bread, tools and books.

The charity still donates to residents in the civic parish and the trustees would like to hear from anyone who might benefit from it.

Money can be paid for or towards an item necessary to alleviate an ongoing illness or condition, to help towards heating or food costs, or for travelling expenses to hospital and for 'comforts' for the housebound.

Recently it has made gifts to young people in need of equipment or therapy to improve mobility, older residents who are facing bills for heating and lighting, and gifts to the school and pre-school group for the purchase of books.

Budgets and setting of the precept 2017/18

It's that time of year again when the council decides its budget and therefore precept for 2017/18.

Last year there was an increase to meet the ongoing costs associated with providing devolved services to Little Marlow Parish.

Should parishioners have any projects they wish the council to consider, please contact the clerk in first instance.

Future Meetings

The next meeting is October 18 (no meeting in November). All Council Meetings are held at The Pavilion, Church Road, Little Marlow, Bucks SL7 3RS
Tel: 01628 890301
Email: clerk@littlemarlowparishcouncil.org.uk
Twitter: #littlemarlowpc



l-r: Mavis Gibson, Chrystal Wright, Iris Vickers, Sybil Fox, Olwen Morgan and Terence Merritt

Drivers needed!

These are just a few of the many people locally who rely on the help of drivers provided by Wye Valley Volunteers to ensure they make it to hospital appointments. Sybil Fox told *Target* that they have never let her down and all the drivers are very friendly and helpful.

While their list of drivers is substantial, more are needed if Wye Valley Volunteers is to continue helping people get to medical appointments.

Transport organiser Sally Williams said that some had now reached the age where they couldn't be a driver so they had to be replaced.

So could it be you? You can commit as little time as suits you. We know your time is precious and trips to Stoke Mandeville, John Radcliffe at Oxford or into one of the London hospitals can take some hours. Trips to our local surgeries or to High Wycombe or Wexham Park hospitals are far shorter.

People who need help rely on Wye Valley Volunteer drivers. Crystal Wright reckons that it is like being driven around by angels.

Contact the Wye Volunteer Bureau in the portakabin alongside the community centre, in the morning or ring them on 01628 521027 to find out whether you can help this vitally important service.

Graham Blake soft furnishing

- Loose covers
- Curtains
- Re-Upholstery
- Tracks & Poles

TEN YEAR GUARANTEE

For personal, helpful service, please call

Tel: 01844 261769

Mob: 07802 213381

grahamblake123@btconnect.com

www.grahamblake.com

Take your Target!

Clark Schofield, who lives in Chalklands, Bourne End sent us a photo of himself after competing in the European Triathlon Championships in Lisbon, Portugal where he finished an impressive ninth place in his age group.

He said: "As soon as I crossed the finish line and collected my medal my first thought was to get a photograph with *Target* magazine in front of the Vasco da Gama bridge."

Well done Clark and thanks for the great photo!





It's Emerald for the Thursday Club

Fifty five years ago two young mums started to meet regularly on a Thursday in each other's homes. Soon they were joined by other young mums and they booked speakers, demonstrations and tastings. They stopped when the numbers reached 30 because that was the maximum any of the houses could take.

Over the years the Thursday Club members moved on and others took their place. Essentially they are good friends and they love celebrations. That's why they got together for lunch in celebration of those 55 years. Pat Vanryne baked a cake – similar to the one she had made for their glorious golden celebration when they all had tea at Cliveden.

Two of their founder members were at the lunch, Freda Dandridge and Sue Baldwin, while everyone delighted in a very special event for their emerald celebration.

Helping out dogs...

Matthew Stanley has found a way of helping some dogs, by feeding others.

The Bourne End businessman runs Barney's Biscuit Boxes to raise awareness of puppy farming and raise money for dog rescues through selling high quality dog biscuit boxes and advent calendars.

Barney is the name of Matthew's dog who was born on a puppy farm and adopted from a local rescue nine years ago. All biscuits and treats are made from natural human grade ingredients with no additives, preservatives or derivatives.

Matthew said: "We sell individual packets of dog treats, gift boxes of dog treats and our dog advent calendar contains more than 10 different brands meaning every day there is a different treat."

"Whenever we sell a biscuit box or an advent calendar we donate to the favourite dog rescue of the customer and also to a fund which helps pay towards veterinary costs of dogs rescued from puppy farms."

They are on sale at weekly markets and at www.barneysbiscuitboxes.co.uk



94 Little Marlow Road
Marlow
Buckinghamshire
SL7 1HG
01628 483062

Lee Farm, Lee Lane
Pinkneys Green
Berkshire
SL6 6PE
01628 622086

1A Dodds Corner
Stokenchurch
Buckinghamshire
HP14 3RZ
01494 485855

61-63 The Parade
Bourne End
Bucks, SL8 5SB
01628 525274

www.hallplaceveterinarycentre.co.uk

SMALL ANIMAL CONSULTATIONS BY APPOINTMENT
24 Hour Emergency - 01628 622086

Woodworking Classes

A great Christmas Present!



"Stop watching videos on youtube and have a go."

for more information

01628 290 770

www.thewooburncraftschool.com



PT CARPENTRY

and Household Services

Design • Repair • Rebuild - just ask

Paul Thomas

Mobile : 07905 221991 E mail : ptcarpentry@live.co.uk

Carpentry - Plumbing - Plastering - Decorating - Gardening
(sub contract electrical services)

Carpentry design and repairs, bespoke furniture made to order, erecting sheds, stables, fencing, trellis, garden gates, assembling flat pack furniture, hanging doors, changing locks & door furniture, fitting security locks to doors and windows, boarding out lofts & installing loft ladders, plumbing in sinks, installing washing machines, kitchen and bathroom fitting, changing taps, tiling, grouting, putting up shelves, pictures, mirrors & curtain poles, clearing and repairing gutters, landscaping, general garden tidying, pressure washing patios, project management.....

the list goes on and on!!.....

"To do the jobs that you don't have time to do !"

Mobile : 07905 221991 E mail : ptcarpentry@live.co.uk

Bourne End Electrical



All your electrical needs catered for

Quick and efficient service

Test & Certification
New Fuse Boards
Upgrades & Repairs
Interior & Exterior wiring
Outside Security Lights
Switches & Outlets

Ring Stephen on
01628 850968
07790 546975

You can't have everything - where would you put it?

JAMIE'S TOURS

Picking up at a location near you!

WESTONBIRT NATIONAL ARBORETUM

Thursday 20 October

£29.75 adult (includes admission)

Shop for Christmas and enjoy the day!

GLOUCESTER QUAYS VICTORIAN
CHRISTMAS MARKET

Thursday 17 November for £19.50

Cathedral setting for Christmas market!

WINCHESTER CATHEDRAL MARKET

Wednesday 30 November £19.50

Celebrates its 10th anniversary this year as
one of the best in Europe

A few places left! Grab a late break!

The Crown Hotel, Weymouth

Monday 31 October – Friday 4 November

Christmas & New Year style fun with outings!

2017 holiday list now available, phone Jamie

Phone or email Jamie with your details to go
on the mailing list for all trips and holidays

www.jamiestours.com

Ring 01494 416500 Mob 07714583215

or email jamiiefyfe2@gmail.com



Brittons Solicitors

28 The Parade
Bourne End
Bucks SL8 5SY

Friendly, helpful, professional,
efficient and cost effective legal
service.

We look after you.

Telephone: 01628 533350

Fax: 01628 533119

Email: lex@brittonsol.co.uk

V J CLEANING

ALL HOUSES & BUSINESS
PREMISES CLEANED
TO THE HIGHEST STANDARD

REGULAR WEEKLY CLEANS
OR ONE-OFF DEEP CLEANS.

WE CAN WORK HOURS TO SUIT YOU,
HOWEVER BIG OR SMALL.

FOR A FREE, NO OBLIGATION,
QUOTATION

CALL US NOW ON
07869 127508 OR
01628 527891



Celebrating 10 years of lettings

Andrew Milsom Lettings are celebrating 10 years of lettings.

Director Jo Wells opened Andrew Milsom Lettings in Bourne End in April 2006; her personal touch extending right down to decorating and preparing the office next door to the well established sales branch (opened in 1994). She and her team quickly cemented their place in the competitive and

fast moving local rental market by opening a further branch in Marlow.

With more than 20 years experience, combined with a wealth of genuine local knowledge, they offer the highest standard of service to landlords and tenants alike. Keeping things local is vital to the business and all property maintenance is carried out by trusted local traders who benefit from the work Andrew Milsom Lettings sends their way.

As the markets and methods of lettings have changed, so has Andrew Milsom, embracing the benefits of online rentals while never losing that personal touch that Jo introduced back in 2006.

Richard Brookland took over managing the Bourne End branch in 2015 when Jo moved over to the Marlow branch.

With many years experience in estate agency he and his team aim to use the technology to their advantage and to the benefit of their landlords and tenants. Repeat business and fantastic results are a testimony to the team's ability to build and maintain excellent relationships with their clients.

The team sent this message via Target: "Thank you Bourne End for welcoming us into your wonderful village 10 years ago. The time has flown and we've watched it change and grow, but the great sense of community spirit remains the same and we hope we will be here for many more years to come. Many thanks from Jo, Richard, Chloe and Keziah!"



I-r Richard, Keziah and Jo

For a FREE no-obligation market appraisal of your property whether you're SELLING or LETTING your home, please contact your local office.

MARLOW	01628 890707	homes@andrewmilsom.co.uk
BOURNE END	01628 522666	bourneend@andrewmilsom.co.uk
COOKHAM	01628 531222	cookham@andrewmilsom.co.uk
MAIDENHEAD	01628 622211	maidenhead@andrewmilsom.co.uk
STOKENCHURCH	01494 482676	stokenchurch@andrewmilsom.co.uk
MARLOW LETTINGS	01628 816590	lettings@andrewmilsom.co.uk
BOURNE END LETTINGS	01628 523310	lettings@andrewmilsom.co.uk



www.andrewmilsom.co.uk

By choosing Andrew Milsom you will benefit from years of local knowledge and experience, saving yourself both time and money. We aim to provide peace of mind and a personal service that's second to none

bourne end dental



Our exceptional levels of expertise and our team approach to caring means Bourne End Dental has been at the forefront of general practice for more than 20 years.

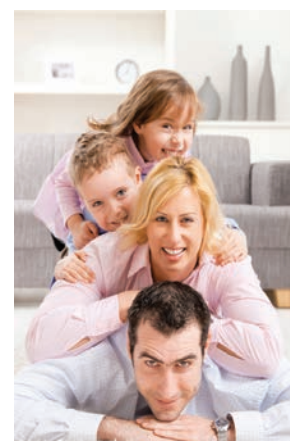
- ❖ Considerate dentistry in a caring environment
- ❖ Superb clinicians with a family focus
- ❖ Early morning & Saturday appointments
- ❖ Specialists in gum therapy, root canal treatment & braces
- ❖ Cosmetic dentistry & whitening
- ❖ Dental implants & facial aesthetics

Protecting, renewing and enhancing the lifelong
dental care of our patients

01628 523 353

Station Road, Bourne End, Bucks, SL8 5QP

www.bourneenddental.co.uk





Bats revealed and rescued!

With a church as old as St John the Baptist at Little Marlow there's no doubt that it has bats around its belfry, its trees and the nature reserve close by. So a Bat Safari with the North Bucks Bat Group was an ideal summer event for churchgoers, parents and children. In fact more than 30 people arrived for the evening in August.

While they looked at photos of the many varieties of bat that had been rescued, the children had a chance to colour bat masks. Then they were introduced to a noctule bat called Rose (top right with Julie). She was the star turn, loved all the attention and the tasty morsels to eat.

Everyone had a chance to look closely at a bat, delight in a species that was around with the dinosaurs and realise that bats aren't frightening creatures.

Lots of facts about bats were explained including the nipple under the armpit for suckling their babies, how they manage to eat around 3,000 gnats, moths and

Hannah (3) colouring in a bat mask with her dad Ben Falk



insects during the course of a night and the tiny noises they make as they chat away to each other.

If you didn't like bats before, then this was certainly the way to overcome any fear and realise how useful they are in the animal world. Did you know that a bat can take a spider from a web and not damage the web? It's all done in a delicate manoeuvre.

And they are vulnerable creatures. Rose was found on a roadside with a broken finger and she was rescued. So what should you do if you find a bat that is injured? The answer is contact the North Bucks Bat Group on 01296 427972 or the Bat Conservation Trust on their helpline which is 0845 1300 228.

That's exactly what Target editor Debra Aspinall did...

"One warm summer's day I was walking into my kitchen when, out of the corner of my eye, I could see something black shuffling along the tiled floor. It was too slow to be a field mouse (which my cat, Macy, sometimes brings home alive) and too big to be a spider, but it took my brain a couple of seconds to recognise it was a tiny bat.

As the back door was closed its only possible means of entry into the house was via Macy's mouth through the cat flap.

I like bats, I think they are adorable, but they are quite inelegant lolling across the floor and I really didn't know how to handle it or what to do with it. I didn't want the cat to pounce again so I covered it with a Tupperware container

and went straight to Google which helpfully gave me the website of the Bat Conservation Trust www.bats.org.uk.

A knowledgeable lady told me not to touch the bat with my bare hands (more for its sake than mine, but also because some can carry diseases) and to place it in a dark box with a dish of water as it may be dehydrated. She also suggested placing a scrunched-up cloth for it to hide under.

She then gave me the number of Margaret and Peter Grimsey (top right), a couple from the Chalfonts who cover this area for bat rescues.

I called and caught them on their way to Tiggywinkles to collect some other bats which had been cared for at the wildlife hospital and were now ready to move to their garden bat shed for final recuperation before being set free.

Within 45 minutes of me finding my bat, the Grimsey bat rescuers were standing at my door with a little bat box, ready to take their patient with them for a vaccination (in case it had picked up an infection from the cat's mouth). Margaret fed the little pipistrelle some water from the end of a tiny brush and closer inspection revealed my bat to be a teenage boy who had a tiny puncture in one wing temporarily preventing him from flying. However according to the Grimseys he could live to 20 or more as long as he avoided my cat in the future.

They named him Bay, after my street (they always name them after the location where they are found).

About two weeks later Margaret called and asked if I would like to be present for Bay's release back into the wild. Of course!

This took place at dusk in our back



garden (pictured above). My son held Bay on his open hand then, within minutes, the little bat flew off to find his colony again.

Margaret and Peter are just two of the many wonderful people who spend their retirement helping the less fortunate, whether they be animals or humans, and they deserve a HUGE thank you!" DA



BY APPOINTMENT TO
H.M. QUEEN ELIZABETH II
HEATING & PLUMBING ENGINEERS
R.S. BOILER SERVICES



Reg No 62

RS Boiler Services

Gas • Oil • Heating
Plumbing • Electrical
L.P.G. Specialists • Propane • Butane

TEL: MARLOW (01628) 483099 FAX: (01628) 476843

Cutting Edge

All in one
hair
beauty
&
barber shop



NEW Tanning Studio

t. 01628 526070
www.cuttingedgewooburn.co.uk
49 The Green, Wooburn Green HP10 0EU

Any excuse for a party

With many of the flats occupied it seemed like a good idea to celebrate the opening of Bourne End village's Blyton House in style.

This new development by McCarthy & Stone had finally opened its doors with many of the new residents being local people who were downsizing and making their houses available for younger families.

With the garden planted up, the tables and chairs just begged to be sat on over a glass of bubbly and introductions all round.

It was a great reason for celebration. In addition it was Enid Blyton's birthday so another good reason for a party.

Staff members mingled with the new residents and, where necessary, explained what they are able to do to make life easier, how they help in an emergency and generally welcome people to a new way of life.

Peggy Wise from Flackwell Heath is delighted to have finally moved in and loves her flat on the first floor. Ann Bown who lived in Claytons Meadow thinks it's great and Jean Peasley, always determined to show what a great community there is in Bourne End, has already taken some of the new residents down to the coffee morning at the community centre.

Alison from The Hawthornes in Wooburn Green has become the concierge and loves the house. Bill Scott is the site manager as work continues on the creation of a new Co-op Local within the development.

He is very hopeful that the shop will be open around the middle of October.

McCarthy & Stone's Mike Westby and Barrie Fisher talked about 24 hour cover if necessary on flat maintenance and assured everyone that this was their home and any problems would be sorted.

And after the bubbly it was time for a cup of tea together. Author Enid Blyton once lived down the road at Old Thatch in Coldmoorholm Lane and her memory was celebrated in Blyton House.

Our pictures show (clockwise from top) Blyton House, Peggy Wise who has moved here from Flackwell Heath and Jean Peasley with the site manager.



LETTERS TO THE EDITOR

Dear Editor

Can I, through *Target*, thank everyone for the many cards, letters and phone calls I received wishing me well when I moved into Blyton House.

After spending 56 very happy years living in Chalklands, it was certainly a big step in my life.

I cannot believe how quickly I have settled into this new chapter of my life and how happy I feel.

This, I am sure, is partly due to the warm welcome I received from the moment I moved into Blyton House. The staff at McCarthy & Stone have all been so caring and helpful. Nothing is too much trouble which has made the move far less stressful.

**Jean Peasley,
Blyton House
Bourne End**

We also received this lovely letter and just had to share it with our readers

Dear Editor

This is Frederick Bedwell aged 88 and now in the Southampton area. But I have great memories of Bourne End. Rula Lenska used to live there and I often used to see her around the area. My wife and son used to be in Bourne End every week to see our uncle who has now died.

Grey hair, not a lot, and now walking with a frame - without it I couldn't get about and it seems that the only outings are those to the hospital.

I always liked gardening but now I can only look at it. My good friend Michael sends me the magazine - that's why I decided to write. Cheerio for now.

All the best, **Frederick Bedwell**

Your local Drycleaners at your service

Regular Discounts

Follow us on Facebook and Twitter, or sign up on our website for regular promotions and discounts.



Pop into your local Blue Dragon at 62 The Parade, Bourne End for a full range of drycleaning and domestic laundry services, including our **super speedy 2 hour and same day drycleaning options**. We can even take care of your repairs and alterations.

Branches also at: Beaconsfield, Gerrards Cross, Great Missenden and Ickenham.

Your Bourne End Blue Dragon
62 The Parade,
Bourne End, Bucks.
SL8 5SB
Tel: 01628 522358

Opening Hours
Monday - Friday:
8.00am to 5.30pm
Saturday:
8.00am to 4.00pm
Sunday: Closed

It pays to use Blue Dragon





BOURNE END JUNIOR SPORTS CLUB

NEWSLETTER

Founded in 1970 Bourne End Junior Sports Club is a registered charity run by volunteers to provide sport and recreation for children and young people, with many being highly qualified in their own sport. The New Road Sports Hall was built in 1982 and later extended to include a climbing wall and a club room. The multi-sport centre is used extensively by club members and members of the whole community. Please visit our website for more information www.bejsc.co.uk

BEJSC SPORTS HALL

The summer break gives us an opportunity to clean and refresh our heavily used premises.

This year was no exception as we had our changing rooms refurbished. We acknowledge this was overdue, but other areas of the hall have had to take priority – the main hall floor was sanded and resealed last summer; the roof was resealed the summer before.

Balancing the budget is something directors take seriously, but also weigh the important need to maintain our facilities in the best possible standard for all our users. Regular visitors will also notice fresh paint throughout the premises.

Aside from our 600+ members who use the hall regularly, we also have many more – students from Bourne End Academy, adult sports clubs who use the hall for badminton, basketball, football and men's keep-fit, wheelchair basketball teams, plus casual members of the public who come to use our climbing wall. It is used every day from 9am through to 10.30pm so does have a great deal of use.

Our main building was opened in 1982 by HRH The Princess Anne; what a memorable occasion that was. Princess Anne was to remain our Patron for the following four years. The building has stood the test of time – over 35 years. The extension was built in 1997 to meet the needs of our growing club and extend the range of sports on offer. Sir Steve Redgrave CBE opened the new building and is our Honorary President. Even this 'new build' is nearly 20 years old. It would be impossible to count the number of users of the whole premises during all those years but it will run into many thousands.

What a unique achievement!

SPORTS ON OFFER TO CLUB MEMBERS

We offer eight different sports to children and young people aged from 6 to 18+ years (some activities vary the starting age to match the demands of the sport).

They are badminton, basketball, canoeing, climbing, football, judo, inline hockey and swimming.

As you will guess, not all the sports use the hall – swimming takes place in three different



venues; similarly football is on a variety of pitches, and canoeing on the River Thames.

All times and days vary too, so if you would like to find out more please leave a message on our answer-phone at the club and someone will get back to you, or email office@bejsc.co.uk. We are all volunteers so please understand we cannot man a phone at all times but we do our best.

The various sections are for children and young people; however there are a few exceptions. Swimming section now offers adult swimmers the chance to improve their skills or just get fit. Sessions are on Thursday 8pm-9pm at the Handy Cross pool. The current price is £10/month including pool access. For more information please contact info@BEJSC-Swimming.org.uk. Canoeing welcomes parents or carers who would like to paddle with their child(ren). Some young adults (former members) play basketball on Friday evenings with the senior group.

VOLUNTEERS NEEDED

Did you belong to BEJSC when you were young? If you did I hope you will remember the extra value and opportunities it gave you so that you may feel like putting something back.

A classic example of this is Junior Committee which offers real development and life skills to young people that 'make a difference' to their future.

Many former members still keep in touch and confirm the value they gained.

Could you be the one to come and take that on? It only requires an hour a month. In order to offer the best service to our members and hall users we would welcome some more support from a few more volunteers. If you feel you could offer a few hours a month, or even an hour, we'd love to hear from you.

FOOTBALL

The football season is well underway and the sports club is ready to hit the ground running.

Our development squads (U7s to U12s age groups) will play a mixture of non-competitive and competitive matches, while our U14s to U21s age groups will play competitive league and cup matches.

In addition, we are holding our very popular Junior Kickers sessions at the Sports Hall on Saturday mornings (10am to 11.15am) for U5s and U6s,

which is a great way for children to be introduced to football and offers them a structured pathway within the club to develop their football skills (these sessions cost less than £3 per session over the season).

We would like to hear from anyone interested in helping with the football section's administrative duties or coaching.

We are always looking for new players to join the club at all age groups, especially our U10, U14, U16 and U18s, so if you are interested in joining us, please call Ken Murphy on 01628 525359 or via the 'contact us' option on our website www.bejsc-football.co.uk.

OPEN DAY

If you missed our open day on October 1, don't worry you will have another opportunity to visit us in the New Year!

ALSO AT BEJSC...

Climbing Parties

Did you know you can book a climbing party at our Sports Hall? We cater for ages six and over; participants need no experience as they will be guided by instructors. Call 01628 528110 for details or e-mail office@bejsc.co.uk. Visit our website www.bejsc.co.uk for more information.

Classes for adults - Pilates class is on Thursday evenings from 6.30 to 7.30pm. This gentle form of exercise is suitable for all ages. The following classes are also held at the Sports Hall - Monday fitball 9.30 to 10.30am; Tuesday 4 to 4.45pm stretch class.

Treatment Room - for all your aches, pains, and injuries at The Sport Massage Clinic contact Wendy 01628 528226. Acupuncture available with Ray Siberini 07748 968762, www.acupuncture-balance.co.uk

**For information on clubs using our premises please contact the sports hall www.bejsc.co.uk
email: office@bejsc.co.uk. Chairman Matt Todd 01628 528110 Editor: Liz Hutton 01628 478168
Manager: Pete Sherwood 01628 528110 mobile 07710 132424
Sports Hall: (answerphone) 01628 528110**

Need an Electrician?



N.I.C.E.I.C. Approved
Portable Appliance Testing
All electrical installations and
rewiring undertaken.



**SELLECK
ELECTRIC**

**ELECTRICAL CONTRACTORS
AND TESTING SPECIALISTS**

**S.D. & R.A. Selleck
Electrical Installations Ltd.**

3 The Green, Wooburn Green, High Wycombe,
Buckinghamshire, HP10 0EE

Tel: 01628 525278

Fax: 01628 810373

www.sellecks.co.uk

Wooburn Wheels

Service & Repairs, Children's Bikes, Adult Cycles,
Good Selection of Accessories.

Tools, Appliances & Accessories

COMPETITIVELY PRICED: Kettles, Irons,
Toasters, Hair Dryers, Coffee-Makers, Shavers,
Fryers, Lamps, Cable by the metre, Hoover Bags,
Plugs, Lampholders etc.



TARGET READER SERVICE

Useful Telephone Numbers

BOURNE END COMMUNITY CENTRE 01628 522604

www.bourneendbucks.com

POLICE 101 **EMERGENCY** 999

CRIMESTOPPERS 0800 555 111

www.thamesvalley.police.uk

POST OFFICES www.postoffice.co.uk

Last collection time:

Bourne End, Furlong Road 5.15pm 01628 520050

Flackwell Heath 4.45pm 01628 520524

Wooburn Green 5.00pm 01628 522939

DOCTORS' SURGERIES

Hawthornden Surgery, Wharf Lane, Bourne End SL8 5RX

Dr S H Buxton, Dr M Wolfen, Dr P Newman, Dr S Abbas, Dr M
Siddiqui. Branch Surgery – 47 Straight Bit, Flackwell Heath,
Bucks HP10 9NE

MESSAGES, VISITS & APPOINTMENTS 01628 522864

www.hawthorndensurgery.co.uk

HEALTH VISITORS' SERVICE 01628 482788

Cherrymead Surgery, Drs King, Fraser, Elias, Hettiarachchi and
Payne

Queensmead Road, Loudwater, High Wycombe HP10 9XA

MESSAGES, VISITS & APPOINTMENTS 01494 445150

www.cherrymeadsurgery.co.uk

Pound House Surgery, 8 The Green, Wooburn Green HP10

Dr Elizabeth Bailey, Dr Raj Thakkar, Dr Shareen Hallas,

Dr Emma Southworth, Dr Mia Murray

Also at: Orchard Surgery, Station Road, Bourne End SL8 5QE

MESSAGES, VISITS & APPOINTMENTS 01628 530 997

www.poundhousepractice.co.uk

NHS 111 or www.nhsdirect.nhs.uk

HOSPITALS

Amersham Hospital, Whielden Street, Amersham,

Bucks HP7 0JD

01494 434411

Wycombe Hospital, Queen Alexandra Road, High Wycombe,

Bucks HP11 2TT

01494 526161

Stoke Mandeville Hospital, Mandeville Road, Aylesbury, Bucks

HP21 8AL www.buckshealthcare.nhs.uk

01296 315000

St Mark's Hospital, 112 St Mark's Road,

Maidenhead SL6 6DU

01628 632012

Wexham Park Hospital, Wexham Street, Slough SL2 4HL

www.heatherwoodandwexham.nhs.uk

01753 633000

BOURNE END DENTAL PRACTICE

Station Road, Bourne End, SL8 5QF

01628 523353

Mr G Goodall, Mr S Rees, Mr A Chandrapal, Mr A Powell

Mon-Thurs 8am - 5pm. Fri 8am - 4pm. Sat 9am - 2pm

www.bourneenddental.co.uk

ASH TREE HOUSE DENTAL SURGERY

6 The Green, Wooburn Green HP10 0EE

01628 532932

Peter Moys

Local handyman

01628 529714

No job too large or too small

Reasonable rates agreed prior to the work

peter.moys@yahoo.co.uk

Mobile: 07502 305 894

No VAT charges on labour

Fully insured | Free estimates

Established 1968

NEWELL & SON

20 Fennels Farm Road

Flackwell Heath



Tel: 01628 525329/524294

All Plumbing & Heating

Specialising in Bathrooms

Floor & Wall Tiling & Decorating

Reasonable Rates

No job too small

John M Wilks
Heating and Plumbing

EST 1971

Specialising in power flushing and
cleaning of all types of domestic
heating systems

Tel: 01628 527020

Mob: 07802 946209



www.buckspowerflush.co.uk

info@buckspowerflush.co.uk

Piano Lessons

**A teacher with many years
experience. Lessons given in
Bourne End home setting,
High standards, good results
and good fun.**

Young and old very welcome

ROBIN SHELDON

Call 01628 530174 or visit

www.piano-lessons-rts.co.uk

Community Minibus for Hire

12 Comfortable Seats

Reasonable Rates

Needs own driver

Contact Sue

at the Community Centre

01628 522604

Chiropody

Bourne End

Community Centre

Monday Mornings

07986

606814

*For the treatment of all
Foot Ailments*

CALL TARGET ADVERT

CE
nd websites

HALL PLACE VETERINARY SURGERY

61 - 63 The Parade, Bourne End SL8 5SB
www.brookhousevet.co.uk 01628 525274

DAY CENTRE, Wakeman Road, Bourne End SL8 5SX

01628 527024

WYE VALLEY VOLUNTEERS, Portacabin, Wakeman Road
Bourne End SL8 5SX

01628 521027

BOURNE END LIBRARY

Wakeman Road, Bourne End SL8 5SX 0845 2303232
Sunday & Monday closed. Open from 9.30am, half day on
Wednesday. Open Saturday until 2pm. Late Night on Tuesday
www.buckscc.gov.uk/bcc/libraries/branches/bourne_end.page

British Rail Passenger Information 08457 484950

Bourne End Station, Station Road, Bourne End SL8 5QH
www.nationalrail.co.uk

Carousel Buses www.carouselbuses.com 01494 533436

Arriva Bus Company www.arrivabus.co.uk 0844 8004411

North Thames Gas Emergency (Slough) 0800 111999

Southern Electricity Emergencies 08000 727282

Thames Water Supply Emergencies 0800 714614

THE SAMARITANS

(free number even from mobiles. Texts also accepted) 116123
Katharine House, 17 Uxbridge Road, Slough, Berks SL1 1SN

CITIZENS ADVICE BUREAU 03444 111444

BUCKS COUNTY COUNCIL, County Hall, Walton Street,
Aylesbury HP20 1UA www.buckscc.gov.uk 0845 3708090
Highways (Transport for Bucks) 0845 2302882
Citizens Advice Consumer Helpline 0845 4040506

WYCOMBE DISTRICT COUNCIL

Queen Victoria Road, High Wycombe HP11 1BB
www.wycombe.gov.uk 01494 461000

SCHOOLS

Claytons County Combined, Wendover Road, BE, SL8 5NS
www.claytonprimary.ik.org 01628 525277
Little Marlow School, School Lane, Little Marlow SL7 3SA
www.littlemarlow.bucks.sch.uk 01628 473316
St Paul's School, Stratford Drive, Wooburn Green HP10 0QH
www.st-pauls.bucks.sch.uk 01628 521553
The Meadows School, School Road, Wooburn Green
HP10 0HF www.themeadows.ik.org 01628 521634
Bourne End Academy, New Road, Bourne End SL8 5BW
www.bea.bucks.sch.uk 01628 819022

WOOBURN & BOURNE END PARISH COUNCIL

Council Offices, Town Lane, Wooburn Green HP10 0PS
www.wooburnparish.gov.uk 01628 522827

LITTLE MARLOW PARISH COUNCIL

Community Office, The Pavilion, Church Road, Little Marlow
SL7 3RS
www.littlemarlowparishcouncil.org.uk 01628 890301

SING ON 01628 525415



Tailormade trips

BEACH HOLIDAYS

honeymoons
city breaks





As **your local Travel Counsellor** with years experience in the travel industry, I can tailor-make your perfect holiday. Available at a time to suit you, I will provide an unrivalled level of personal service, taking care of all your travel needs down to the finest detail.

Everything you book with Travel Counsellors is financially protected including hotels, low cost airlines and car rental at no extra cost.

SUE CLARIDGE Travel Counsellor

T 01628 876080
E sue.claridge@travelcounsellors.com
W www.travelcounsellors.co.uk/sue.claridge

Travel Counsellors ensures complete financial protection on every booking



The Kings Head

Church Road, Little Marlow
Tel: 01628 484407

We serve a wide variety of hot and cold food every lunchtime and evening and all day Sunday from 12 noon to 7pm, plus a good selection of cask conditioned ales and fine wines. In the wintertime there are log fires and in summer a large garden. The Pavilion function room caters for any type of party including conferences for up to 50 people. Please telephone 01628 484407 for details.



TONY ELDER
BOURNE END GARAGE
01628 533 236

DO YOU KNOW THIS MAN?

This is the face of Tony Elder



Tony Elder has been synonymous with car care in Bourne End for over 40 years and he has taken over Bourne End Garage, where, he says "No job is too much trouble".

Call in for a chat and speak directly to the person who will be undertaking the work.

BOURNE END GARAGE
1 OAKFIELD ROAD, BOURNE END
TEL: 01628 533 236

SERVICING • EXHAUSTS • TYRES • WELDING • MOT'S ARRANGED
LOCAL COLLECTION BY ARRANGEMENT

Joe Griffin TV AERIAL SERVICES

- Poor Reception Solved - Aerials repaired & supplied
- TVs - Hung on your wall for you. Also supplied & tuned
- Extra TV Points - For aerial and Sky (In HD!)
- Sky TV - Also Foreign Language TV

Call Marlow
01628 439115

A part of  OXFORD AERIALS

STEVE HOBSON Plumbing & Heating

Boilers, Gas Fires, Cookers,
Servicing, Installations and
Repairs,
Gas Safety Landlord Certificates,
Unvented Systems & Plumbing,
Vaillant approved installer

Tel: 01494 524357
Mobile: 07762 082984



Personal coaching can support
you in achieving your goals
Book your free consultation
with this advert

email: ceri.sims@positiveminds-alliance.com

07877048229

www.positiveminds-alliance.com

BS GARDEN SERVICES



- *Hedge Cutting
 - *Fencing
 - *Turfing
 - * Garden Clearance
 - *Driveway & Patio Cleaning
- Call **07966205145**
barrysteptoe@yahoo.co.uk

Pilates Matwork Classes

Beginners/Mixed Level and Intermediate
One to one by appointment

Venues - Abbotsbrook Hall
Upper Thames Sailing Club
Little Marlow Pavilion

St Dunstan's Church Hall - Bourne End
Call Sally on 0787 625 1967

DAVID HARRIS Electrician

FOR ALL YOUR DOMESTIC WIRING
Qualified & Experienced with
Electricity Board - Part P
TELEPHONE: 01628 810349

TO HIRE ABBOTSBROOK HALL

For Wedding Receptions
Meetings, Dances, etc.

APPLY TO
MRS C SAMUELS
2 RED COTTAGES
WELL END
or telephone
01628 528936

AMPLE CAR PARKING SPACE

The Phone Man

Need a new
telephone
socket for
your
computer or
SKY box?

Need one moved or repaired? Broadband signal
problems? Internal wiring problems? BT not
interested or you don't want to pay their very high
charges? Call John on **07709 895252** or **01494
711744** for free advice, fast service, and quality
work. All work and materials guaranteed.

john.summerbell@btinternet.com

For fast, friendly & affordable
taxation advice

Tax Returns/Self Employed Accounts etc.

Home visits & evening appointments available

For a quote, ring Keith on
01628 520426

or visit our website at
www.randallassociates.co.uk
for further details
Keith Randall ATT
Randall Associates

30 Stratford Drive, Wooburn Green HP10 0QH



Kingfisher
Building Consultancy

Thinking of extending?

We offer:

- Full architectural design service
- Planning and building regs applications
- Extension, loft conversion & remodelling
- Party Wall surveyor services
- Building and development consultancy

For professional, friendly advice, please
phone Bourne End (01628) 526998



FOR HIRE
St Mark's Church Hall
Station Road
Bourne End SL8 5QE
Enquiries to: Michael Payne
077430 37938

TRYING TO JUGGLE YOUR CHILDCARE?

Cookham Montessori School
For children aged 2-5 years

We are extending our hours to offer a
flexible package for busy mums!

Mix & match your daily requirements:

- ♦ Session start times: choose from
8.30am, 9.00am, 9.30am or 12.30pm
- ♦ Session finish times: choose from
12.30pm, 1.30pm, or 3.00pm

Funding available for 3 & 4 year olds

Term Time Only

Ofsted Validated

Phone **01628 529414**



www.cookhammontessori.com

EMMETT CONSTRUCTION DEVELOPMENTS LTD

Extensions – Conversions

Refurbishments – New Buildings

Private & Commercial Work Undertaken

Tel/Fax **01628 524500** e-mail: emmett123@btconnect.com

MOTOR RACING MAN



October will be a challenging month for gymkhana grid racer Adam Elder. It's the European championships in Greece and he can't wait to get there, get on the course and race. Adam told *Target* "I'm determined. It's one of the best things I have ever done and I want to make my dad proud."

Dad is Tony Elder of Bourne End Garage and one of Adam's sponsors. He's also chief mechanic and delighted that Adam has achieved so much in two years. Sponsorship is very local with Richard of On Two Wheels on The Parade in Bourne End, his employers Lock and Key of Aylesbury and firms in Marlow and Slough.

Two years ago the Bourne End-born young man admits that he was bored. He wanted to find something that ticked all the boxes on satisfaction and excitement. After getting into trouble for dare-devil driving on public roads he decided to use his skills on the rapidly growing sport of gymkhana grid racing. And he hasn't looked back.

In Greece he will compete against the top drivers in the sport. Stars like Ken Block and Peter Solberg. It's once-in-a-lifetime moment and a huge step towards concentrating on racing full time.

The all-expenses trip to Greece was his prize for winning the Fueltopia competition at Wembley Stadium two months ago where he competed against 32 other drivers.

Adam's confidence comes from his successes so far which have him undefeated Scottish champion, ranked third in Europe and the current Barrel Sprints champion. His successes have come with increased confidence, crowd-pleasing tactics and a driving skill that avoids obstacles with near-miss deftness.

The former Claytons and Furze Platt pupil worked at Quickstep to gain work experience and then full time with Lock and Key to become a qualified locksmith. His bosses are supportive and he is able to work around driving competitions.

If you want to see what gymkhana grid racing is all about take a look on the internet. You can also follow Adam Elder on Facebook and Instagram and it's team1340.

To be part of Adam's success you can consider sponsorship. Adam is keen to gain more sponsorship and to progress his success in the sport. If any firm would like to see their name on the side of his Nissan two litre turbo just get in touch with him on 07876 500222 or team1340@outlook.com



Help for Headway

Headway, the brain injury association, would like more local volunteers to help with sessions at the community centre on Tuesdays, Wednesdays and Thursdays between 9.30am and 4pm. Anyone interested can pop in and get more information or contact Loraine Clark on 07704 860754 or hsb.coordinator1@headwaysouthbucks.org.uk.

FOR SALE STUNNING MOUNTAIN RETREAT Gran Canaria



Large family home with garden and spectacular views. Ideal for someone who craves total peace and quiet. Perfect "lock up and leave".

Fully registered

Call 0750 863 8609
or email ewendyluckett@yahoo.co.uk

The CACI Pod



Our CACI Ultimate lifting treatment is both preventative and rejuvenating

- * Facial Lifting * Lines/Wrinkles
- * Eye Bags * Microdermabrasion
- * Skin Hydration * Neck Treatments
- * Cellulite, Stretch Mark Treatments
- * Jowl lift



CACI's celebrity friends include

Jennifer Aniston, Courteney Cox & Jennifer Lopez

thecacipod@yahoo.com Tel/Text 07901 276977

Magnolia House, Bourne End, Bucks SL8 5TZ Visit: www.caci-international.co.uk for more information



RELIABLE PROFESSIONAL SERVICE FOR:

- RODENTS • COCKROACHES • ANTS • FLEAS
- BED BUGS • FLY KILLER UNIT • BIRD CONTROL
- WOODLICE • GREY SQUIRREL • WASPS & BEES
- FLY CONTROL • FLY SCREENS

EMERGENCY CALL OUT

DOMESTIC & COMMERCIAL • FREE SURVEY • FULLY INSURED

Don't be bugged ring us now

23 Years Experience
Unmarked Vehicles

01628 525025



Bygillian Gallery

FRAMING

bygillian
01628-527720

ART GALLERY



BESPOKE FRAMING SERVICES, ORIGINAL ART, UNIQUE GIFTS



12 FURLONG ROAD BOURNE END, SL8 5DG TEL 01628 527720 WWW.BYGILLIAN.COM

Happiness is no laughing matter!

A glorious day for Little Marlow's fête

The sun came out to provide a perfect afternoon for Little Marlow Village Fête on August Bank Holiday Monday.

Locals came out in force with something for each one to enjoy: bouncy castle and face painting for tots, coconut shy, plate smashing and cricket for the energetic, afternoon teas with live music entertainment for some, and for the many beautiful canines, a chance to strut their stuff in the dog competitions.

Stalls trumpeted the attractions of local groups, including a presentation on the exciting development proposals for Little Marlow Lakes, while Rotary gave kiddies rides around the green on a mini tractor trailer. Many went home with painted faces, home-made jams, a coconut, raffle prizes and a suntan.



ashtonopticians
OPTOMETRISTS

Your independent practice in Flackwell Heath for value, style and personal service

- NHS and Private Eye Examinations
- Digital imaging and OCT scanning
- Behavioural Optometry & Vision Therapy
- Wide range of NHS, budget and top designer spectacles
- Contact Lenses
- Prescription and non prescription sunglasses
- Specialist sports eyewear
- All types of contact lenses fitted and supplied



01628 530420 www.ashtonopticians.co.uk

Mark Ashton BSc(Hons), MCOptom. Ros Ashton BSc(Hons), MCOptom.
1 Acorn House, Straight Bit, Flackwell Heath

JACQUI JONES PERSONAL TRAINING

Fed Up Being Overweight & Unfit?

Want To Kick Start Or Improve Your Fitness Regime?

I Can Help You!

Fully Qualified Personal Trainer

For A Free Consultation
07595223314

www.jacquijonespersonalfitness.co.uk

jacquijones62@btinternet.com
Train at Home or at Private Gym
In Flackwell Heath

fairfield framing

Bespoke picture framers
in Bourne End



01628 529646



07976 883856

debparrish@aol.com

Established since 1998

Ridgeway Property Services

- * Boilers * Heating * Plumbing
- * Natural gas and LPG servicing, installations and breakdowns
- * Toilets, hot water cylinders, tanks, overflows, blocked drains, guttering, waste and drain pipes

Gas Safe 27329

Tel Ian: 07973 289186
ijackson903@icloud.com



www.ijplumbingandheating.co.uk

TECS 19 Ltd Pest Control

- Wasps • Insects
- Rodents • Foxes
- Rabbits • Birds

Please Call

Tel: 07979 808809
tecs19ltd@gmail.com

Summer fun for little ones

A summer fun day at **Cores End United Reformed Church** was blessed with really good weather, but the children had to be very busy before they saw the sun. First their name had to go onto a bag and that had to be decorated. Then there was a big wooden spoon to be made very special with individual designs. Ribbon was added so the spoon could be hung in the kitchen.

Moving swiftly on boxes were next for decoration before the children had a chance to enjoy their picnic, sing song and games. That was outdoors and in the sunshine of the church garden.

Muriel and Beryl enjoyed seeing and encouraging the children while Linda (for the centre office) was a willing helper. Everyone had a lovely time and the weather made it perfect.

Little Stars

Guess how much I love you? was just for babies and toddlers and a Summer fun event in the library.

Welcoming the little ones with simple sounds, lots of music and fun was Kath Boer who danced, sang, made fascinating noises and was watched with rapt attention by the little ones.

And the mums could sit back for a while as their children just revelled in the sounds they could make. Then it was tidy-up time after each activity with everyone joining in and collecting the musical instruments or the little saucepans!

Kath plans classes for little ones at 1.30pm in Bourne End Library on the third Tuesday of the month during October, November and December and at the children's centre in The Meadows School at Wooburn Green every Wednesday morning at 10am during term time.

Just look for the Little Star symbol.

Top images taken at Cores End United Reformed Church, below Little Stars



movers & shakers

for the young at heart!

Every Tuesday (2pm - 4pm)
commencing 11 October

Are you over 55? Like to feel fit, socialise
and make new friends?

Activities / presentations for the head, exercise for the body, and light refreshments... Practical and fun ways to keep your mind, body and soul active!

For more information please contact: **Debra Shirley** on **01628 527024**
or email : debra.shirley@fremantletrust.org

Bourne End Care & Activity Centre
Wakeman Road
Bourne End
SL8 5SX

www.fremantletrust.org

A registered charity and not for profit organisation. (Registration No. 1014986)



Support your local shops and businesses

A change in role for a familiar face

For almost every one of us Carol Flynn has become a familiar face at the Lloyds Pharmacy in Bourne End.

Her involvement goes back more than 30 years when it was called Cross and Herbert and the year was 1983.

Carol and her husband Joe had just moved into the village, living initially in Highfield Road before moving to a home in Northern Heights.

Since then they have had three children and Carol managed to work a couple of days a week at what eventually become Lloyds Pharmacy.

Thirteen years ago she returned full time and delighted in the new style shop environment, meeting lots of people and keeping abreast of all the developments that have occurred along the way.

Now she has retired as Pharmacist/Manager and has taken a part time, two day a week, role with Lloyds as a relief manager. Carole will now be out and about as a travelling pharmacist.

But her memories of the great local staff members, customers, various doctors, health visitors and district nurses remain and she will be missed.



She has seen lots of changes during the years and extended involvement between the pharmacy and various NHS services. For Carol it has been all about making a positive contribution to the health and well being of many local people.

Our photo shows Carol celebrating her new role during a long weekend in Dublin.

Parish Councillor Katie's update

As we step out of September and leave the summer sun behind us (at least it did come out and play a little this year) there's still so much going on.

The pond in Farm Wood is now finished, complete with its new path and some fantastic plants: red hazels, pheasant bushes and shrubby honeysuckles to name just a few. I have to say one of my favourites is the Cercis tree (forest pansy) which I'm sure will be adored by humans and insects alike with its stunning early blooms full of nectar. We have also planted a small but spectacular Gunnera in the far corner, to provide shade and hiding places, it will love the boggy soil and will in a few years look very impressive.

Despite the area looking so tempting at the moment, I'm afraid we will have to fence part of the area off until the banks of the pond settle in and the plant roots find their way into their new soil. Usually we would encourage our children and two legged friends to run around the woods, but we need to nurture new growth for a couple of months.

We have completed the judging for next year's best allotment award, and the results are to be announced at the annual parish meeting in May. Although I haven't been involved with the judging myself I have walked around both sets of allotments and wow! It's obvious to see how much love and hard work goes into them.

I met George Wally, who runs Peggs Allotments, a few weeks ago and he reminded me a little of my grandfather, who was a keen home grower and passionate allotment holder. He always said that having an allotment was much more than just growing fruit and vegetables. He felt it was literally 'time spent getting back to our roots', and also sometimes his reason to go outdoors. It's about friendship, shared interest, knowledge and sometimes a little competitiveness too.

Even though all the allotments are taken at the moment, any which are not being used in the future will be reallocated. With no one currently on the waiting lists, this would be a great time to put your name down if you feel the call of the soil.

As mentioned in one of my earlier articles, we have taken on a lot more work as part of the devolution from Wycombe Council, as they have stopped doing a lot of the maintenance and ground work. One of the new jobs we have taken on is weed killing, so if you have become stuck in traffic behind one of our rangers on a quad bike I do apologise. Despite the irritation, the results should be worth it as your emails tell us that the parish is looking very neat and tidy.

It's hard work weed killing, so next time you see them do give them a toot and an encouraging wave. It takes just over eight days and 20 litres of weed killer to spray the 129 odd miles of roadside. That is without counting the footpaths and 'hard to get to places', which have to be done on foot with heavy backpacks.

A new malady we are calling 'sprayer's neck', joins the ranks of housemaid's knee and tennis elbow, caused by all the looking down with the heavy kit on.

And lastly, a big thank you for all the lovely emails and comments we've received about the look of the parish. Do please keep writing in and telling us about any wildlife you have seen and any ideas that you have. Please remember to check your bonfires for hedgehogs and other wildlife before lighting them on November 5. Stock up on mealy bugs and the like to help the birds through the coming cold times and enjoy the Autumn with its myriad of wonderful colours, rustling leaves waiting to be kicked and puddles ready to jump in - now where did I leave my wellies?

Cllr Katie Lamb (Kate.lamb@live.co.uk)

We know
Bourne End


Are you looking to sell or let your property
in and around Bourne End?

Beaconsfield regularly heads the list of the top 10 most expensive towns in the UK and attracts many premium buyers and investors.
Could you get more by using one of Beaconsfield's leading estate agents?

To arrange a free, no obligation market appraisal, call us on 01494 680018
Visit our website www.ashingtonpage.co.uk for an instant online valuation.



Ashington Page



Maths + English +
study skills = dream job

Contact your local **Kumon maths and English Study Centre** to book your **two-week Free Trial**.

Flackwell Heath Study Centre
01628 532620

1 OCTOBER – 20 NOVEMBER

KUMON

Terms and conditions apply. Fees vary. Participating study centres only. Please refer to your local study centre. Subject to availability.

Over 55? Come and move it and shake it!



An activity programme at Bourne End Day Centre is being re-launched for people aged 55 and over.

The Bourne End Care and Activity centre, run by local charity, The Fremantle Trust, is relaunching 'Movers and Shakers' to accommodate more people from the local community.

Movers and Shakers is aimed at providing an opportunity for local people aged 55 and over to enjoy a range of activities including hobbies, quizzes and speakers. It also involves gentle exercises, relaxation methods and wellbeing-based

with their daily routines."

It is hoped that the session will not only be a great

meditation by a trained coach, all for just £3 per person (including refreshments).

From October 11 the sessions will be moving to a Tuesday between 2pm and 4pm.

Debra Shirley who manages the centre said: "We hope that people will find the new day and time more convenient and that it fits in better

opportunity for local people to get together and socialise, but will also attract new members to the centre, which plays a valuable role in the local community.

"Movers and Shakers is aimed at older people from the area, who would welcome an opportunity to meet others with similar interests.

"We very much hope that those who come along will have a say in the activities that we'll be running. It's also a great way for people with mobility difficulties to get active and stay fit, as well as make some new friends," said Debra.

"We hope this will add something new to the centre that will appeal to a wider audience and introduce new people from the area to the great service we have in Bourne End. The team here are really excited about it," she added.

For more information please call Debra and the team on 01628 527024.



Best in Britain!

Regulars at The Royal Standard pub in Wooburn Common already thought they had the best local pub in Britain, but now they know for sure.

The pub has won a national competition in The Sun newspaper to be named their Pub Idol, beating four other worthy finalists from around the country.

Landlord Mark Lloyd is chuffed and says: "It was an honour just to be nominated, but to actually win! Well it's fantastic."

Regular Bob Thompson, a local artist, nominated the pub for the title because of the £30,000 plus raised by Mark and his customers over the past five years. Judges who picked the pub as the winner included pub landlord comedian Al Murray.

Mark, who ran the London marathon in three hours 43 seconds to add £8,000 to the charity total, now plans to put the £1,000 prize money towards a charity event at the pub to raise more funds for causes close to his heart, including Children With Cancer UK and Bob's chosen charity The Henry van Straubenzee Memorial Fund, a small UK charity which aims to fight poverty in Uganda through education.

Sapphire

Elegant dresses

For hire and sale:

- Evening
- Prom
- Parties
- Awards Dinners
- Cruises

For sale only:

- Mother of the Bride/Groom
- Bridesmaids
- Special Occasion

Co-ordinating hats, head-pieces, shoes, bags and jewellery

Open 9.30 am – 5.30 pm,
Monday – Saturday

Out of hours by appointment:
Sunday

11-13 Wycombe Lane, Wooburn Green, HP10 0HD
Tel: 01628 530 516 www.sapphiredresses.co.uk




Ivory Belle at Sapphire

Bridal wear. Book an appointment at
www.ivory-belle.co.uk
or call: 01628 530516

Please follow us on Twitter @sapphiredresses
Please like us on Facebook sapphiredresses

The Bounty

Cockmarsh, Bourne End

www.thebountypub.com

Call 01628 520056 for directions



Winter:
Open weekends for drinks and food.

Summer:
Open daily from noon. Food until 8pm, drinks until 11pm

Registered Charity
No:282538



2016 Wooburn Festival

A Festival for the Chilterns and Thames Valley

The Festival Committee reserves the right to refuse admission and to make any alterations to the programme which may be rendered necessary by illness or unavoidable cause.

MAJOR EVENTS IN OCTOBER

Friday 7th October

Loddon Piano Quartet

Daniel Cornford (viola), Cormac Browne (violin)
Roberto Sorrentino (cello), Marisa Cornford (piano)

Concert of works by
BEETHOVEN & FAURÉ

Sponsored by:-
YAMAHA & Countrywide Pianos

£16
restricted view £10
students £8

8.00pm St PAUL'S PARISH CHURCH
WOOBURN. HP10 0PW

Saturday 8th October

Jazz Supper

with the
Liane Carroll Trio



"In Liane Carroll, the art of the song has
one of its greatest exponents" (Jazzwise)

£20 (Students £10)
includes
2 course supper

8.00pm THE CURZON CENTRE
MAXWELL ROAD, BEACONSFIELD. HP9 1RG

Tuesday 11th October



The Great Exhibition Ensemble

Gavin Edwards (horn) Adam Wolf (trombone and sackbut),
Erhard Swartz (ophicleide) Neil Brough (trumpet)
Robert Vanryne (trumpet)

£16
restricted view £10
students £8

8.00pm St PAUL'S PARISH CHURCH
WOOBURN. HP10 0PW

Friday 14th October



Cerys Jones
violin



Oliver Heath
violin

Heath Quartet & Michael Collins



Gary Pomeroy
viola

Clarinet Quintets
by
Mozart and Brahms



Christopher
Murray
cello



Michael Collins
clarinet

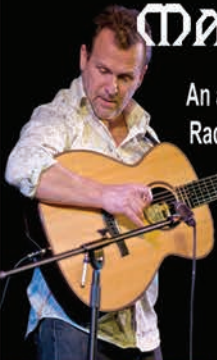
£16
restricted view £10
students £8

8.00pm St PAUL'S PARISH CHURCH
WOOBURN. HP10 0PW

Sunday 16th October

FOLK SUPPER

MARTIN SIMPSON



An astonishing 31 nominations for the BBC
Radio 2 Folk Awards over the last 15 years,
Martin has had more nominations
than any other performer.

£20 (Students £10)
includes
2 course supper

8.00pm CURZON CENTRE, MAXWELL ROAD
BEACONSFIELD. HP9 1RG

Friday 21st October

CAFÉ OPERA

Barefoot Opera returns to the Festival with
scenes from operas by Mozart & Pergolesi
with the theme of maids



£16
students £8
Bar available

7.30pm COMMUNITY HALL, WAKEMAN ROAD
BOURNE END. SL8 5SX

DETAILS of ALL OCTOBER EVENTS on WEBSITE :- wooburnfestival.com
BOX OFFICE :: Website or Bourne End Library [Tel: 07 746 730 696]

Bourne End & Cookham Probus Club By John Daymond

In August we were given a very interesting talk by W/Cdr Mike Whitehouse on *617 Squadron – Dambusters and afterwards*. 617 Squadron was formed at RAF Scampton in Lincolnshire in 1943 for the specific task of destroying the Mohne, Eder and Sorpe dams providing power to the Ruhr industrial region of Germany. The raid took place on May 17 when both the Mohne and Eder dams were destroyed by the 'Bouncing Bombs' invented by Barnes Wallis. Of the 12 aircraft despatched, only five returned.

In November 1943 W/Cdr Leonard Cheshire took over as CO and developed a special target marking technique using flares dropped from Mosquito aircraft and later Mustang fighters. Other 617 successes included assisting in sinking the German battleship Tirpitz in a Norwegian fjord. On D-Day the squadron dropped large quantities of metallic strips, to confuse the German radar into believing the allied landings were miles away from the actual site.

At our July meeting Richard Poad gave a fascinating talk entitled *Maidenhead and the Movies* on films produced at Bray Studios, with famous stars such as Joan Crawford and James Mason.

The Hammer Horror Movies were all produced at Bray as well as the classic *Kind Hearts and Coronets*. Maidenhead Town Hall was used as the hospital in the 'Carry On' films. Some of the Thunderbird shorts were made at Bray Studios and they are well known for some of the special effects in 007 movies.

Anyone who would like to join our Probos Club should contact Brian Print on 01628 523739.

Bourne End and Wooburn WI By Janet Spill

In July we welcomed Ken and June Brazier from the Mercy Ships charity, whose large floating hospital gives free medical care to some of the world's poorest people.

For our outing to Waterperry Gardens at the end of July, 29 members went along for an enjoyable visit with good weather.

For our September meeting the talk was *Tales from the Kitchen* by Dru Ellis about the role of women from 1900. The October meeting will be our AGM.

Visitors and prospective members are most welcome to attend our meetings on the second Monday of the month at 2pm in St Dunstan's Church Hall.

Bourne End & Cookham Rotary Club By John Dunsterville

Our Rotary club has two main functions: to raise funds and to use those funds for the benefit of the community and projects abroad, but all done in good spirit and fellowship. Each member club brings their own expertise and experience to serve a common purpose.

For example we were approached by Naomi Riches to help with her amazing Thames Rowing Challenge on September 18. No problem – with two rowing champs among our members, local links and club members ready to pitch in, a fun afternoon was assured. Naomi raised funds for 'In Vision' for sufferers of Nystagmus, a dreadful sight condition.

Our club has voted on our two main charities for this year, Rennie Groves Hospice and Air Ambulance. If you have a cause to champion or want to improve the lives of those around you, do call Maureen on 01628 850595, or see our website to find out more: www.beac-rotary.org.uk and www.facebook.com/beacrotary

Inner Wheel Club By Diana Hyde

Did you know that 'J Lyons' developed the first computer called LEO in 1951? Neville Lyons, a great nephew of the famous entrepreneur who started the 'J Lyons Tea Rooms', enthralled members and friends with many such revelations.

More than 100 ladies then enjoyed dainty sandwiches and a cream tea. President Libby presented member Ann Bown with a beautiful bowl on the occasion of her special birthday.

Our September meeting was a fun-filled social evening, after discussions about possible future events to be held this autumn and winter.

Glory Mills Bowls Club By John Palfreyman

One of the highlights of our season is the annual fixture against the Bucks Vice Presidents, an occasion when Glory Mill fields 16 players (4 rinks) with two bowls per player. In the previous year we also had a fixture against the Bucks Presidents for the first time in a decade, but unfortunately could not arrange a return fixture this year.

The club has had a wonderful season during 2016 and is already looking forward to the indoor season in High Wycombe where it normally enters three to four teams. Also in the near future the end-of-season meeting will be held when the club prepares

for the indoor season and also plans the 2017 season. We welcome new players: ring 01494 673859 or email shirley.churn@btinternet.com

Little Marlow & Well End WI By Judy Wilson

At our Annual Show in August nine classes ranged from cookery and craft to photography and poetry. Our two judges, Betty Furner and Sue Norton, were complimentary when, after judging, they talked about the entries and explained their decisions. It was a close-run competition for the overall winner who was Carole Kirkland.

Our Summer outing was a boat-trip and ploughman's lunch on the River Thames starting at Runnymede, followed by an afternoon visit to The Savill Gardens on what seemed like the hottest day of the year. A delicious cream tea set us on our way home after a very pleasant and leisurely outing.

At our September meeting we heard about the highs and lows of writing and publishing from a local author, Geoffrey Gudgeon. Our October speaker will tell us how he has spent 40 years catching smugglers. Visitors are always welcome at our meetings in the Little Marlow Cricket Pavilion at 2pm on the first Tuesday of the month. Call Judy Wilson 01494 438380

Bourne End WI By Kath Acres

In September we enjoyed a talk on *Writing and Other Lunacies* from author Geoffrey Gudgeon.

We had a fantastic trip to London to visit Westminster Cathedral followed by a tour of Buckingham Palace and the chance to see a display of the Queen's frocks. All WI members know that if you get lost you should ask a policeman for directions so it was very lucky that the head of London's Metropolitan Police, Sir Bernard Hogan-Howe, was on hand to help two of our ladies find Buckingham Palace!

We entered the WI craft competition at the Bucks County Show for the first time and were delighted to come fourth among stiff competition.

Our next big event is a Ladies Fashion Show and Pop Up Shop on Friday November 11 at 7pm at the community centre featuring well known high street brands with at least 50 percent off. Tickets (£5) from the library and the community centre or contact bourneendwi@yahoo.com, 01628 531521.

At our meeting on October 6 at St Dunstan's Church Hall at 7.30pm, Andy Thomas will reveal *The Crop Circle Mystery*. Visitors are always welcome and we have a short waiting list for new members that you are welcome to join.

Cookham Bridge Rotary Club By Nancy Ovstedal

Rotarians from Bourne End and Cookham have had two wonderful weekends with Rotarians from the tiny town of Vestnes in Fjord, Norway. In June, 33 Rotarians and partners visited Vestnes and were treated to a wonderful weekend full of mountains, fjords, good food and lots of laughter. The photograph shows Rotarians and hosts after a drive along the dramatic Trollstigen Road.

The recent return visited brought 22 Norwegian visitors from Vestnes. They had a terrific time, enjoying a boat trip to Windsor, the castle, a Beatles sing-along, an English dinner party and a trip to Oxford. The weekend climaxed with a gala dinner at Winter Hill Golf Club.

Paul Ovstedal from Cookham Bridge Club said: "When we first arrived in Norway, both clubs were a little nervous about meeting up, but within five minutes the air was filled with conversation and laughter. I know Norway well, but had never experienced such enthusiastic hospitality. We stayed in one another's homes and enjoyed local sites and customs."





PAUL JARVIS

a lifelong resident of Chalklands

Residents of Chalklands and other locals who regularly walk through this popular estate will have noticed the rowan tree (mountain ash) that was recently planted on the roundabout at the northern entrance.

The tree has been planted as a tribute to Paul Jarvis, the late treasurer of the Chalklands Residents' Association (pictured opposite), who died in July last year after many years of fine service to the Chalklands community.

Initially it was a committee initiative with

members agreeing to buy a tree from their own pockets, but others got to hear of the idea so the purchase was also supported by some long-term residents who had known Paul well, and by a few others who thought it a nice idea to enhance the approach into Chalklands.

Paul was more than just a long-term Chalklands resident, he was actually born at No 84 in the house that his parents bought in 1937.

The estate was developed by the local firm of A D Jameson Ltd, Arthur being one of two brothers who built extensively in the area.

Henry Jameson's business was focussed on Marlow and Flackwell Heath while Arthur built largely in and around Bourne End. Construction of Chalklands was interrupted by the war with only half of the building work completed, but work started again after the winter of 1946/7 and the estate was finished as planned.

The properties comprised a mixture of semi-detached houses and detached bungalows with a fine fully detached house where members of the Jameson family lived.

In the early 1970s six detached houses were added in two plots that Jameson had retained for an office and his builder's yard.

Residents who were fortunate enough to live in Chalklands alongside the Jamesons enjoyed the benefit of free maintenance of the road, verges and pavements unlike today's residents who must maintain the estate themselves. A balance of annual subscriptions and action by enthusiastic voluntary working parties keeps the infrastructure in good shape with substantial improvements year on year.

Arthur's semis were originally offered at £550 – just add three noughts as a guideline price for today. Advertisements highlighted three bedrooms, two reception rooms, a tiled bathroom and kitchenette, hot and cold water, a heated linen cupboard and fuel and cycle sheds.

The plots were large, especially by today's standards, and this has enabled owners to extend their properties in a variety of ways yet still retain their precious off road parking. This process of home extension and improvement continues to this day with only a few properties left in their original state. Paul's house was one of these.

Paul was born in 1942 and was one of a number of residents who have

lived in Chalklands since this early period. He had two brothers who married and moved away, but Paul lived his whole life at No 84.

For most of his career he worked for a local engineering firm but he had many interests including geography and history, and in particular local history. He took an active part in the community and was a founder member of the current Chalklands Residents Association when it was established in 2003.

Paul was an exemplary treasurer, but he also supported the committee with incisive analysis and pertinent observations across the full range of activities especially those with a 'legal' dimension. Paul was well read, well mannered and good company and his wit and wisdom are sorely missed.

The rowan tree planted in Paul's memory will act as a reminder of this lovely man and a plaque will be placed by the tree once it is fully established.

The tree is a Scarlet Japanese Rowan and will provide year-long colour with initially bronze leaves in Spring which turn dark green through the Summer and finally red and orange in Autumn. Sadly it was badly damaged shortly after planting, but it appears to have survived and all of us who walk or drive past it are willing it to really flourish next Spring.

Written by Bill Leftwich, chairman, Chalklands Residents Association, No 82

UPDATE: A group of Chalklands volunteers made a dramatic improvement to 'Pond Corner' with road widening, installing new kerbstones and replacing the concrete pavement. During the course of the work they found a leak which was quickly repaired by Thames Water. Also an extra chamber, which was blocked, is now fully functional and will improve the flow of water. A great result and thanks to everyone.



BEAUTIFUL TREES MAKE A HOUSE A HOME.

- Tree & Shrub Pruning
- Cabling & Bracing
- Fertilisation & Soil Care
- Insect & Disease Management



Please Call 01494 677 889 or visit BEACONSFIELD@BARTLETTUK.COM



The Pentagon Clinic Osteopathy and Physiotherapy

Stella Halpin BSc.(Ost.)
David Turner B.Ost.
Morag Bowie M.C.S.P.M.H.P.C.

The Annexe
Bourne End Day Care Centre
Wakeman Road, Bourne End
Bucks SL8 5SX

email: info@pentagonclinic.co.uk
www.pentagonclinic.co.uk
Tel: 01628 533200

Our highly qualified and established Clinical Team continue to provide Osteopathy, Physiotherapy and Sports Massage for all ages. We have a wealth of experience in the assessment and treatment of a wide range of musculoskeletal conditions.

Classic treats

Car and bike enthusiasts enjoyed a fantastic day out when the Classic Car & Bike Show took place at Hedsor Social Club this Summer.

Beautifully restored or maintained cars, bikes, trikes, hotrods and vans were on display and musical entertainment and food provided to ensure everyone had fun.

Here are just a few of the amazing four and two-wheel vehicles on show. The group photo, top right, shows members of the Harley Enthusiast Riders Group.

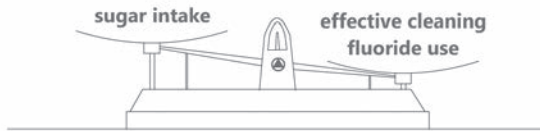


advancedentalservices.co.uk

Bourne End

01628 525223

Tip the balance
in favour of good dental health:



**advance
dental services**

1 Station Court Station Road SL8 5YP

CHRIS GATES

Decoration &
Repair Services

- *Top quality interior and exterior decorating
- * Interior carpentry, plastering, coving and tiling
- *Repair and restoration of exterior woodwork
- *Box sash window repair and refurbishment
- *All types of glazing repairs
- *Fully insured with references available on request

For advice and a free estimate

Tel: 01628 529698

Mob: 07802 457274

Bourne End

BASL

BUILDING & MAINTENANCE LTD



Mathew & Paul Billingham - Seventh generation builders

t: 01628 298185 w: www.BASLbuilding.co.uk e: Mathew or Paul@BASLbuilding.co.uk

We undertake any and all work to your home to a high standard and cost effectively

Bourne End Community Library

by Inka D'Agostino, library manager

Bounce and Rhyme for toddlers takes place every Thursday term time at 10am.

Little Star Musical Storytelling is held on the third Tuesday of every month at 1.30-2.15pm. Much loved children's stories are brought to life with live music, puppets, singing, instruments and movement. This is for children 0-3yrs and costs £6.

Bourne End Junior Craft Show will be held on Saturday October 15. Entries are free of charge and may be dropped off at the library on Friday October 14 between 3pm and 5pm and again on the morning of the show.

Lifestyle Club meets once a month on a Friday. Our guest speaker for October, local historian Bruce

Cherry, will discuss his new book *"They Didn't Want to Die Virgins: Sex and Morale on the Western Front 1914-1918"*. This will take place on Friday October 28 at 10.30am.

On Wednesday evening, October 12 please join us for a talk on *"Can you eat to outsmart cancer?"* Jenny Phillips, Nutritionist, will be delivering the talk, tickets £5 from the library.

Finally a reminder that we have something of interest for everyone at the library, from yoga, tai-chi, meditation and pranic healing to Italian classes and 'Sing Your Pain Away'.

Computer sessions take place every Friday morning, if interested please book your place. We also have some wonderful rooms for hire at very reasonable rates.

For further information about events or room hire please email: lib-boe@buckscc.gov.uk or call 0845 2303232 Facebook: Friends of Bourne End Library

Historical walks around Bourne End

New to Bourne End and wanting to explore – or a long-time resident with local history to discover? A new set of walking maps aims to take you on a historical tour of the village.

The four walks, each about four miles in length, begin and end at Bourne End Library, taking you through the prettiest areas while explaining their historical significance.

Roger Carter, who compiled the leaflets, says: "When moving to Bourne End a year ago I looked for village walking maps, but they were hard to find. Drawing on the marvellous Brian Wheals archive in the library, the new maps are an easy introduction to the locality and a way to explore the area."

They are available at the library, price £1 for the set (which goes to library funds)..



Could you give some time either weekly or perhaps every fortnight to help with the Flackwell Heath Youth Group? We have a lovely group of around 20 young people aged 10 to 15 and we need more people to help our team of volunteers. We do a range of activities and so are always looking for people too who have skills to offer or demonstrate - this could be on a 'one off' basis, or more regularly. The group meets at the Methodist church in the village on Monday nights during term time from 7-9pm. If you can help please contact us by email at flackwellyouthgroup@yahoo.com or by phone to Chris on 07540 375256.



TEAMWEAR

SCHOOL UNIFORM

SPORTSWEAR

CORPORATE WEAR

Tel: 01628 819242 sales@hawkinsport.co.uk

Unit 10a Wessex Road Industrial Estate, Bourne End, Bucks, SL8 5DT



JG dance

Jeannine Greville Dance Academies & Theatre College



2½ - 18 years, Girls & Boys
Beginner classes in Ballet,
Jazz, Tap & Acrobatics
FREE TRIAL LESSON

RAD, ISTD & LAMDA
Classes up to Advanced 2
Twice Yearly
Theatre Performances

Call: 01491 572000 email: info@jgdance.co.uk

BOURNE END - Wednesdays after School WWW.JGDANCE.CO.UK

Women's Aid speaker at library

Soroptimist International Thames Valley have been supporting Wycombe Women's Aid for many years and are delighted to welcome their speaker at their meeting in Bourne End Library at 7.30pm on Tuesday October 18.

Other local women's clubs also support WWA and we would be glad to welcome their members to this event too. For more information contact Peggy Simson on 01628 523386, visit the website www.sigbi.org/thames-valley, or email sitvclub@gmail.com



Community Market focus

Alison & Karen make a crafty team

Karen and Alison have been sharing a craft stall at the community market for almost a year now.

They say: "We love the friendly atmosphere and chatting with other stall holders and visitors to the market.

"We make a range of items for the home and gifts for all ages."

Karen specialises in decoupage. Her products range from plant pots and garden mirrors to gift boxes, greetings cards and personalised picture frames.

All these wonderful decorative items are up-cycled from 'unwanted' bits and pieces and customers can buy from her stock or order bespoke items.

Alison specialise in cross stitching, mainly greetings cards and pictures.

She says: "I also love to knit and make small knitted toys for young children and large comical clowns for decoration. Again, customers can buy from stock or have bespoke items made to order."

The run up to Christmas is their busiest time and so it is during the 'quieter' summer months when Christmas is the last thing on anyone's mind that they hunt around for new ideas.

The ladies would love to see you at the next community market which is on Saturday October 8 from 10-1pm in the public rooms and on the forecourt at the library in Wakeman Road.

At the same time, you can try your luck at the charity tombola, enjoy refreshments and browse between 30 and 40 other stalls offering all sorts of crafts and gifts, fashions, health & beauty, plants, preserves, British cheeses, bread, local farm meat, cakes and savouries including allergen specific options.

Alison Smith - Knit & Stitch

Karen McNicol - K's Crafty Paper Products

For more information about the community market, go to www.beccmark.co.uk, email rosieohagan@me.com or call 07989 716635

LOCAL BUILDER

C Page

30 years experience

Patios Brickwork
New Builds Fencing
Driveways Extensions

Phone Chris on
01628 529013
mobile **07887 655727**

Pickleball Club The Beacon Centre

A fusion of tennis, badminton and table tennis played with paddles and a hard ball on a badminton size court with a low net.
5.45 to 7.15pm Thursdays

C.O.D.GROUNDWORKS

Specialists in all types of Groundwork

* Paving * Patios
* Fencing * Block Paving
* Drainage * Driveways
* Patio Cleaning * Concreting

NO JOB TOO SMALL

FREE ESTIMATES

Tel: 01628 528637

Mobile: 07778 371552

Thames Music
Tuition

Guitar, Piano & Flute



All ages/abilities welcome
Tel: (01628) 525140
Mob: 07920 165619

www.thamesmusic tuition.co.uk

Painter & Decorator

N. W. Upward

2 Fisherman's Way
Bourne End

All wall coverings hung.
Glazing & Wall Tiling.

Estimates Free.

01628 528921

YOGA WITH LINDA

Monday morning, Tuesday evening
and Wednesday lunchtime
Bourne End

Ring: Linda Jolliffe 07503212815

BUCKS
therapy

Lose weight for Christmas
with hypnotherapy

07518 018 363 buckstherapy.com

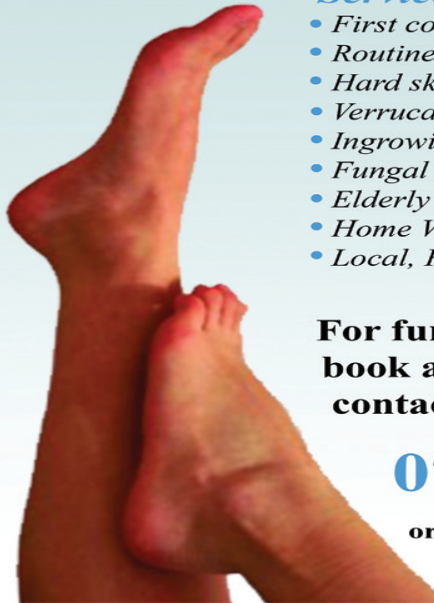
Stacey

Home Visiting
Foot Health
Practitioner

A new Foot Health service available in your area

Services provided -

- First consultation Free
- Routine nail care
- Hard skin, Corn and Callus
- Verrucae treatment
- Ingrowing toe nails
- Fungal nail treatment
- Elderly care home visits
- Home Visits
- Local, Professional, Friendly Service



For further information or to
book an appointment please
contact Elizabeth Stacey on

07817 873592

or email - lizstacey70@gmail.com

Elizabeth Stacey MCFHP MAFHP

ALLAN WISE & CO ROOFING SPECIALIST

Complete Roofs or Repairs

Large or small jobs

Estimates FREE

01628 525740

MANKIND MENS HAIRDRESSING

Tel: 01628 528974

15 The Parade
Bourne End
Bucks
SL8 5SA



R S HALL UPHOLSTERY

31 years experience

ALL UPHOLSTERY WORK UNDERTAKEN

- * Re-upholstery
- * Sofas & Chairs
- * Loose Covers
- * Antiques
- * Pubs & Clubs
- * Schools
- * Hospitals
- * Office Chairs

Large
Contracts
Over 300
fabrics
available
Free
estimates

Also fabrics at competitive prices,
upholstery sundries and all
sizes of foam

Contact Bob: 07809 140988
T: 01494 461481

E: contact@rshallupholstery.co.uk
www.rshallupholstery.co.uk

MAINTENANCE & LANDSCAPING

Property Maintenance, Professional
Landscaping, Fencing,
Specialist Patios,
Paving, Tree Surgery, Etc.

DAVID J KIMBER, 01628 810361 07850 124241

Past times... by Barrie Penfold

A look back at carnivals and fairs held locally in times gone by...

Seeing pictures from the various fairs in the last issue (August/September) brought back memories of previous events around our villages:

WOOBURN GREEN regularly had fairs and events on the green – not so different from today but now there's more technology involved.

BOURNE END REGATTA was a river event attracting loads of visitors and getting them into boats was absolutely necessary! A band played on the riverside and everyone with a boat used it during the regatta.

CARNIVAL TIME brought floats out onto the streets for a procession to Jacksons Sports Field and latterly to Wooburn Park. Stalls, challenges, personalities and lots more were there for the day and especially to see Miss Bourne End presenting the prizes.

CARNIVAL IN COLOUR with the last two pictures from the late 1970s. Bourne End Residents Association featured An Englishman's Home is his Castle and the Chesham Building Society was the world's oldest building society. It merged with the Skipton Building Society in 2010. These carnivals were on Wooburn Park as the Jacksons site was developed.

Our picture captions

1: Wooburn May Fair in 1907. It had been the site of a fair since the 1600s and this included the sale of livestock

2: Regatta day in the early 1900s. It started in 1897 when more wealthy people had homes on the riverside

3: Organisers of the 1909 Regatta pictured at the Quarry Hotel (now the Bounty)

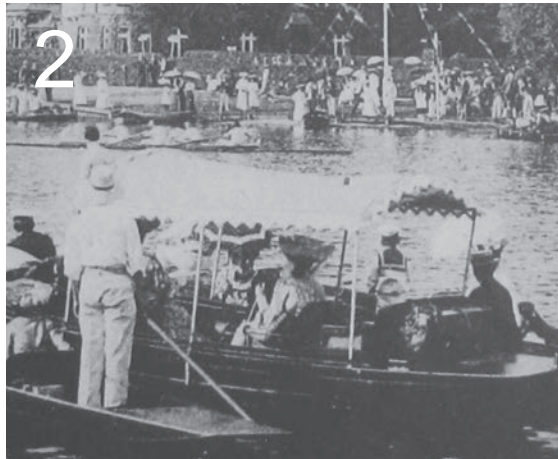
4: Wooburn Carnival in the 1930s

5: Carnival parade at Station Road in the 1930s

6: Carnival on Jacksons Sports Field

7: An Englishman's Home is his Castle

8: Chesham Building Society's horse drawn float



OUR LOCAL CHURCHES KEEP IN TOUCH

Cores End United Reformed Church

Our Harvest charity is the Bethesda Eye Hospital in Benin and we will be thinking of those who cannot see the wonders of God's world and the medical staff who work in difficult circumstances to maintain and restore sight. A stained glass-effect picture window, made up of pictures from people who are associated with the church, will celebrate all that is beautiful in our world.

On Saturday October 22 a Revue at Trinity URC, High Wycombe, will include music and classic comedy



sketches. Tickets are available at Cores End URC.

Remembrance Service on November 13 includes the traditional two minutes silence and special ways of remembering those who died in two World Wars and conflicts since. A beautiful new tapestry pulpit fall has been created and Beryl Britt and our Link-Up ladies have knitted poppies to add to the display in the church. Alongside the remembering are the church's prayers for peace and each Sunday the church lights a Peace Candle to pray for peace in our world today.

The church is holding a Quiet Day on Saturday November 26 as part of the Advent preparations.

Regular church service is at 10.30am every Sunday with junior church and a crèche.

Communion service is the second Sunday in the month.

Link-up club is every second Tuesday morning, 10am to midday, and table tennis every Thursday, 4pm to 5pm. All welcome.

St Dunstan's Church, Bourne End

In their 'Awareness Month', members of the St Vincent de Paul Society updated us about their work to provide assistance to those in need and appealed for more volunteers. After the Healing Mass at St Teresa's in Beaconsfield, the SVP hosted a delicious tea in the parish centre.

Cash for Coins, a scheme which converts left-over foreign currency into funds for the SVP, has started again.

Many of us attended a concert of beautiful Italian, Spanish and



South American guitar music, led by world-renowned guitarist, John Williams, at St Mary's in Old Amersham in aid of The Mae Foundation, a charity which provides musical instruments and teachers for refugee children on the border between Myanmar and Thailand.

Our next charity sale will be on Saturday October 1, 10am-midday in the church hall. Proceeds go to the Kaoma Children's Home in Zambia. Please come along if you can.

St Paul's Church & St Mary's Church, Wooburn

We continue to make dresses and shorts for the children at The Walk Centre in Nakuru, Kenya. If

any readers are interested in helping please contact Sam through dressesmadewithlove@aol.co.uk.

Our Friday Communion service and lunch at St Mary's in Glory Mill Lane starting at midday continues to be very popular. Tots Praise on Fridays in St Paul's Church Hall is at 9.45am. Details of all events are on our website.



The church hall and garden in Town Lane, Wooburn are available for bookings: stpaulswooburnparishoffice@gmail.com, www.stpaulswooburn.org, or call 01628 525512.

St Nicholas' Church, Hedsor

We see discipleship as key to the future of our Christian heritage and hold joint Bible study with St Mark's as well as an Alpha course starting in late September.

On November 19 we look forward to our joint Advent Fair at St Mark's Church, Bourne End.

Holy Communion takes place at 9am each Sunday with the exception of the second Sunday when Pathway, our family service, takes place. Pebbles (children's group) meets every 4th Sunday as does our choir for a sung communion, always a very lovely atmospheric experience. Do join us. For information contact the Rev Janet Binns 01628 523046, email revjanetbinns@btinternet.com



St Mark's Parish Church

We start our Autumn programme with a Sermon series exploring various aspects of church life. We will grapple with what it means to worship, pray, use our gifts and talents and more. At our Bible study group on Thursday evenings we will study the gospel of Mark, please join us at 35 Blind Lane, 7.45pm weekly.

To reach out to families, our early evening service Taste is an informal gathering for children and parents and takes place every first and third Sunday at 4.30pm. We start with tea and cakes and finish with activities, songs and a discussion for around 45 minutes. Pathway is on the second Sunday of the month at 10.30am; another opportunity for families to worship together. The words of the songs and hymns are on a screen and there is an interactive talk. Family communion is at 10.30am on all other Sundays.

The Puppet Theatre club for children aged eight plus is every Tuesday at 5pm in the hall. We are starting to rehearse our Christmas performance, do join us for what is a fun way for your child to use their creative skills.



Further details from www.achurchnearyou.com, www.parishesofhedsorandbourneend.co.uk, the Rev Janet Binns 01628 523046, and Alison Gray on 01628 298022.

Community Church

Everyone is welcome at our Sunday services which start at 10.30am (refreshments from 10am). Sunday services are at The Meadows School on October 2, 9, 23, 30 and November 6, 20, 27.

On October 16 the service will be at the Chapel on the Green. On November 13 there will be no church service as we join in the Remembrance Day service. Please do come along and have some free hot refreshments with us at our marquee on the Green.

'Gather' takes place monthly on Sunday evenings, 7-9pm in the Chapel on the Green on October 2 and November 6. This is a vibrant, uplifting worship time where everyone is welcome.

Most of us enjoy gathering together with good friends over food and there are lots of opportunities to do this through our weekly church activities. Small groups meet weekly in people's homes for a chance to chat, eat and explore the Christian faith more deeply. For more information, contact us via www.wooburngreen.org or come along to a Sunday service and ask.



If you would like to enjoy the company of others in a friendly atmosphere, come along to our Tuesday Lunch Club and enjoy tasty home-made soups, fresh bread from the Wooburn Bakery and delicious cake. It meets every Tuesday at 12.30pm at the Chapel on the Green. It's a great way to enjoy a relaxed lunch and get to know others. For more information contact Dave Bitcheno on 07894 143925 or d.bitcheno@sky.com

Dad's Little Steps (£2 per family including bacon butty) runs from 10am to 11.30am on Saturday October 1 and November 5. This is for all Dads with pre-school children to meet other Dads while the kids have a great time playing.

On Thursdays throughout term-time we hold Little Steps (£1 per family including drink and biscuit), 10-11.30am in the hall at the Chapel on the Green. This toddler group is for all parents and carers of pre-school children.

Finally, a reminder that children are very welcome at our Sunday services.

St John the Baptist, Little Marlow

We had a wonderful day at the village fête and we thank all those who came and stocked up on their jams, marmalades and pickles. Together with our Vintage Stall we made over £800.

For our Harvest Festival the church will be specially decorated as usual and the congregation will be invited to bring their gifts up to the altar during the service. This will be on Sunday October 9 at 11am followed by our Harvest Lunch in the Cricket Pavilion. Tickets for this are £8 obtainable from Wendy Osborn



01628 525336 or Jeff Smith 07775 957090.

Our service of Remembrance is Sunday November 13 at 10.45am. The Christingle service will be part of our All Together service on Advent Sunday November 27 followed by tea and cakes.



centreTalks

Angela Stratford

from Old Butchers Wine Cellar

Wine Tasting



Bourne End Community Centre
19:45 on Thursday 13th October

£10 on the door or in advance from the
Centre Office or the Centre Bar
www.bourneendbucks.com/centreTalks
A fund raising activity for B.E.(B).C.A.

BOURNE END COMMUNITY CENTRE

Saturday 5 November 2016 : 7.30pm – 10.30pm

Big Band Entertainment from
Sound Force Big Band



Sit and Listen or Get Up and Dance!



Interval Buffet and Raffle

All proceeds to
Bourne End Community Association (Registered Charity)

Tickets £12

The Community Centre – Monday to Friday 10am – 3pm

Or call Mo: 01628 520170 / 07561 483454



centreTalks

Catherine Grigg
A Victorian Xmas



**What the Victorians did for
Christmas and why**

Bourne End Community Centre
19:45 on Thursday 10^h November

£5 (£4 for Ass'n members) on the door or
£4 (£3 for members) in advance from the
Centre Office or the Centre Bar
www.bourneendbucks.com/centreTalks
A fund raising activity for B.E.(B).C.A.

BOURNE END (BUCKS) COMMUNITY ASSOCIATION Membership costs

INDIVIDUAL MEMBERSHIP over 18 years of age	£5
JUNIOR MEMBERSHIP under 18 years of age	£5
FAMILY MEMBERSHIP husband/wife/children of school age	£10
ASSOCIATE MEMBERSHIP (outside the area of benefit)	£5
ASSOCIATE FAMILY MEMBERSHIP (outside the area of benefit)	£10
SENIOR CITIZEN MEMBERSHIP	£3
SENIOR CITIZEN FAMILY MEMBERSHIP	£4
LIFE MEMBERSHIP husband/wife/children of school age	£60
SINGLE LIFE MEMBERSHIP	£30

Annual subscriptions are payable on or after 1 January each year. Family membership carries one vote. Associate and Junior Membership carry no vote.

APPLICATION FORM

Cut out and send or hand in at the community centre,
Wakeman Road, Bourne End, Bucks SL8 5SX

NAME.....

ADDRESS.....

.....
Email.....

TYPE OF MEMBERSHIP.....

AMOUNT PAID.....

CENTRE NEWS



Kids & Family Christmas Party

CHILDREN'S ENTERTAINER

SATURDAY 3RD DECEMBER 2016 3.30-5.30



BOURNE END COMMUNITY CENTRE

CHILDREN £6

ADULTS £1

ARTY FOOD BOX AND PRESENT INCLUDED FOR EACH CHILD

WAKEMAN ROAD BOURNE END SL8 5SX



Forum Players

Planning for panto... Oh yes we are!

It is good to be back into the swing of rehearsals, scripts, costumes, make-up and pulling a show together to make an entertaining pantomime for everyone. It's not the easiest thing to do and sadly the huge interest there used to be in amateur dramatics has reduced so there are fewer people keen to come along and be part of the thrill.

Another slight complication has been the need to move all our costumes from the backstage wardrobes as the floorboards were investigated for woodworm. Now, thankfully, that is just a memory and it has given everyone the chance to clear out items we know we will no longer need.

And we have a pantomime. We have two great directors in Wendy Keeble and Kerry Hudson (pictured here l-r).

So Forum Players are in panto mode. So keep a watch out for the January 2017 dates and ring our secretary on 01628 523291 if you want to reserve a block booking. It is "Babes In The Wood" by Damian Trasler, David Lovesy



and Steve Clark. It is great fun for all the family and there's loads of audience participation.

Remember – there's still time to be involved.

We love a big chorus and there's a place for YOU!

Chess

The season starts with the Maidenhead friendly and the AGM as well as a first evening of friendlies. The season properly gets underway at the end of the month with the first inter-club matches. This season the Uxbridge (Hayes) second team is joining the Bucks League in the second division and Aylesbury 1 is rejoining the league in the same division. We lost four players last season so contact Roger de Coverly on 01628 486676 if you are interested in playing.

Darts

The Summer League is now over and done. And the good news is that the 'B' team not only won their league section by a convincing margin, but went on to win the final 8-3 against Green Dragon B. In the A Section our A team finished up in fourth position.

By the time you read this the Winter League will be well underway, again with high hopes. At the time of going to press the captaincy of the team has not yet been decided. Mike Slade, captain for the past few years wishes to stand down to concentrate on his job as league secretary. I understand there has been a rush of volunteers to replace him.

Angling Club *news from the water's edge*

July saw the club visit Hill Cottage Farm near Waddesdon, the most picturesque venue we fish. Conditions seemed perfect for a good day, but unfortunately no one told the fish. Every bait option was thrown at them with little response. It's a shame the fish are not like some of our members who seem to eat all day.

Terry Belcher netted three carp for 12lb 12oz followed by Tony Wing in second place with 2lb 2oz of small silver fish.

The August match was totally different. We fished at West End Pool and had the first ton up bag of fish this season, with Terry putting an arm aching 112lb 12oz on the scales. Tony Colborne came second with a very respectable 50lb and our new member, Jim West, took third place with 34lb 4oz.

Not put off by our July trip we are returning to Hill Cottage Farm, hopefully the outcome will be different this time. Wishing all, tight lines and bulging nets.

Our picture below shows winners from 2015 with, left to right, Robert Smith winner of Bailiffs trophy (biggest silver fish weight), Terry Belcher winner of Nine Match Shield (most points won over the season) and Anthony Coleborne, Bream Trophy and runner up (largest bream caught throughout the season)



CAR PARKING AT CENTRE



Our spaces at the front of the centre are limited and intended for people who are using the various meeting halls and rooms. They are not for general parking as there is space in the public car park alongside.

OUR GROUP MEMBERS KEEP IN TOUCH

Bourne End Townswomen's Guild

On Wednesday October 12 Colin Oakes visits us to talk about *The Rise, Fall and Rebirth of London's Docklands*. It's a fascinating subject as we see so much about what is happening in the area to make it a feature of the capital.

On November 9 we are holding one of our popular Games Afternoons. Always great fun and very competitive!

We meet in the *Target* Room at the community centre on the second Wednesday in the month at 1.30pm, ending with tea and chat around 4pm. Everyone is very welcome, turn up to hear the speaker if a subject interests you. For information ring 01628 527931.

Bucks Family History Society

Sin, Sex and Probate is the title of Colin Chapman's talk on Tuesday October 11 on ecclesiastical courts, law and order, justice, probate and wills.

Then on November 8 our computer expert Ian Waller will talk about the need to keep up to date with all the latest news from the internet.

We meet in the small hall at the community centre on the second Tuesday in the month at 7.30pm, visitors welcome. ww.bucksfhs.org.uk

Bourne End Flower Arrangement Society

On Tuesday October 4 we welcome Rebecca Tiller who will demonstrate *A Walk on the Wild Side*. Then on November 1 Sachiko Pearce will demonstrate on the theme of *The Orient Hana Express*.

Demonstrations take place in the main hall at the community centre on the first Tuesday in the month at 8pm. Visitors are always welcome (small entry fee) for the evening.

Our Facebook page has 'how to' guides to conditioning, arranging and drying flowers so visit www.facebook.com/bourneendFAS

Marlow-Maidenhead Passengers Association

We held discussions in July at Bourne End with Mark Hopwood (MD GWR) and some of his senior staff, on a number of topics.

In spring 2017 eight car electric trains will start between Maidenhead and Paddington.

At Maidenhead station platform 5 will become a through line and platform 3 reversible. This work will take place during a Christmas 2016 possession.

There is still a funding gap of £0.5m for Bourne End trackwork modification to allow a half hourly service.

A proposal to rebuild the Bourne End to High Wycombe link is regarded as unrealistic given the tightness of funding at Network Rail but GWR would be happy to operate it if it happened.

We pressed GWR about ticket machines at Marlow and Cookham again; this is in their

franchise and will happen but GWR could not give a timescale. On board ticketing machines were about to be ordered from Fujitsu.

However in the London area, where magnetic stripes were still used by TfL, tickets would retain this feature. GWR are also working on provision for mobile and contactless payments. GWR would also look at the information provided about Permit to Travel machines, which have also been found inoperative on occasions at Taplow.

GWR had taken on board our frequent complaints about non-checking of tickets by on-board staff and had given a clear message to the Regional Retail Manager responsible for this area to sort it out.

The project to allow PA announcements at Bourne End has been approved with an in-service target of end of September.

GWR said they were proposing a £2 charge for Cookham car park to be introduced but Cookham Parish Council would be consulted. Bourne End is £3.40 before 10am and £2 thereafter, with weekly tickets available; GWR agreed to look again at the proposed rates compared with Bourne End.

The person responsible for CIS has been asked to find out why incorrect CIS information was being displayed. Contact MMPA to report further incidents so that these can be investigated while 'hot'.

A fully accessible bridge at Taplow Station will be built and GWR preferred option for the heritage bridge is for it to be found a home on a heritage railway.

GWR have again been asked to sort out the Taplow notice-board an on-board train announcements advising passengers for Bourne End on a through train to change at Maidenhead and passengers for Marlow sitting on a train at Bourne End advising to change or they will end up back at Maidenhead. This shows the need for better communication by drivers.

GWR would alert staff about the mis-use of the automatic on-board announcements and any further incidents should be reported to MMPA or direct to GWR by email. GWR will also remind on-board staff to check that customers not disembarking at Bourne End were made aware of the need to change trains.

GWR are hoping to pilot a "webinar" for Customer Panel – East in October. The idea is to have a period of time in which any customer can submit questions, comments etc to GWR by this means.

Marlow and District Railway Society

In July Dr David Turner from York University gave a presentation about rail travel in the Victorian and Edwardian periods when standards of comfort for ordinary passengers were not quite what we would tolerate today.

In August members visited the 7¼ inch gauge garden and woodland railway in Thame and enjoyed watching and riding behind trains hauled by superb models of GWR locos.

At our meeting on October 20 we have *That was the year that was 1962* by local enthusiast

Geoff Plumb, with high quality photos of railway activities that year.

On November 17, we have *The Golden Age of Swindon – Part 3 The Collett Years* with the Rev Canon Brian Arman. A must for all Great Western fans from the acknowledged expert on this subject.

Visitors are always welcome to come along to any of our meetings, which start at 8pm (£3 entry). For more information see www.mdrs.org.uk

Bourne End Horticultural Society

Graham Talbot's talk is *All About Soil* on Thursday October 30. Our November speaker will be Carolyn Foster who will suggest *Gardens to Visit Near and Far*.

If you would like to join our friendly society ring 01628 521482 or email pennyhampson@hotmail.com. Everyone is most welcome with or without gardening knowledge.

1st Wooburn Scout Group

The 1st Wooburn Cub section enjoyed a camp in September and the district night hike and sleepover.

Beavers will be taking part in a 'chip shop hike', a visit to the Wycombe Swan and Booker Airfield plus loads of other fun activities.

For the Scouts the autumn term will commence with navigation training in preparation for the upcoming hiking and orienteering season.

We have just set up a search group to recruit a new Group Scout Leader. A full role description will be coming out shortly inviting applicants to head up our Scout group.

If your child is interested in joining our group please visit our website for more information: wooburn.wixsite.com/wooburnscouts

Bourne End Video Makers

In preparation for the next round of inter-club competitions, work has started on a storyline entry entitled '*Odyssey*' - *the tale of a man and his dog*. A full winter programme includes internal competitions, practical sessions, guest speakers and constructive appraisals of members' individual films.

We are keen to attract new members and as part of a recruitment campaign, we are planning a training course for new and amateur film makers in making good films, including the type of equipment that is available, basic filming and post-production techniques. The course started on September 19 in the *Target* Room and runs each Monday until October 31.

Although the course is likely to be nearing the end before this article is published, depending on the level of interest we receive we would consider running another course next year.

The club continues to meet on the first and third Wednesday of the month in the *Target* Room at the Bourne End Community Centre in Wakeman Road from 7.30pm to 10pm. Visitors welcome. For more information contact David Jarman on 01494 712441.

Wye Valley Volunteers

After 30 years the local charity 1067 Trust Fund has closed. The Fund was incorporated in 1984 with the objective of assisting people for who help was not readily available from other sources.

Over the years hundreds of local people have been helped with grants, but recently, with interest rates so low that capital was eroded, it was decided to close the charity.

The remaining money was handed over to Wye Valley Volunteers, a charity with similar objectives, by several of the original 1067 members (see photo below).

The donation will go towards maintenance funding of the volunteer bureau which depends significantly on the generosity of individuals and companies.

If anyone needs help from us, or is interested in volunteering (drivers in particular are needed at the moment), please contact the Community Volunteer Office (portakabin to the right of the community centre) which is open from 10am to midday each weekday or phone 01628 521027. See our article page 14.



From left: Derek Watts (treasurer), Brian Spires (chairman) Douglas Fergusson (trustee and also WVV chairman) David Tracey (secretary). The other trustee, Peter Yeeles, was not present.

Bourne End Twinning Association

History was made for our association in August – the British weather finally defeated our annual garden party and, due in particular to the forecast for high winds, we were forced to ‘decamp’ into St Dunstan’s church hall.

However, this did not spoil the afternoon for the 50 plus members who participated. We were entertained by an excellent quiz provided by Penny Walsh and members tucked into a delicious afternoon tea.

Now we are looking forward to our Autumn Dinner at which we will enjoy a good meal followed by an entertaining talk entitled *My family and other setbacks*.

Plans are underway for our trip to Octeville-sur-mer next Spring, so if any of these events appeal to you, ring 01628 521748 to have a chat and find out more, or see www.bebta.ukgo.com. You do not need to be able to speak French to join us, but if you wish to brush up your French, there may be an opportunity to do that through us.

CALENDAR OF VILLAGE EVENTS

OCTOBER

- 1 Sat Open Day at Bourne End Junior Sports Club from 10.30am to 12.30pm in the Sports Hall. Go along and see what sports and activities they have on offer. Children will be able to try their hand at some activities.
- 1 Sat St Dunstan’s Church Charity Sale 10am-midday in the church hall. Proceeds go to the Kaoma Children’s Home in Zambia. Please come along if you can.
- 2 Sun Magpie’s Nest antiques fair 9.30am to 3.30pm
- 4 Tues CentreJazz: live music from 8pm in the community centre bar. Admission £5 includes raffle
- 6 Thur Community Centre Bar Quiz starts at 8.30 pm, It’s a £1 per person, and the winning team gets the quiz takings from the night
- 7 Fri Bingo in the community centre. The fun starts at 2pm
- 8 Sat Bourne End Community Market 10am – 1pm in the library
- 13 Thur The centreTalks feature Angela Stratford on wine tasting. See poster page 36.
- 14 Fri Bingo in the community centre. The fun starts at 2pm
- 15 Sat Bourne End Junior Craft Show. This takes place in the library with prizes for the best art awarded to winners in several categories. See page 13 for details
- 16 Sun Table top sale at the centre 9.30am to 11.30am. Call Caroline on 01628 485642 to take part
- 18 Tue Soroptimists talk at the library. Guest speaker is from Wycombe Women’s Aid. See page 32 for details
- 21 Fri Bingo in the community centre. The fun starts at 2pm
- 28 Fri Bingo in the community centre. The fun starts at 2pm
- 28 Fri Social dance with Barbara and David at 8pm. Good dancing in friendly company
- 31 Mon Halloween competition at The Walnut Tree, Bourne End. Carved pumpkins can be dropped off at the pub from Oct 28. See page 11 for details

See page 28 for various Wooburn Festival events throughout October.

NOVEMBER

- 1 Tues CentreJazz: live music from 8pm in the Community Centre bar. Admission £5 includes raffle
- 4 Fri Bingo in the community centre. The fun starts at 2pm
- 3 Thur Community Centre Bar Quiz starts at 8.30 pm. It’s a £1 per person, and the winning team gets the quiz takings from the night
- 5 Sat Sound Force Big Band entertainment at the community centre 7.30pm to 10.30pm. Tickets £12. See poster page 36
- 6 Sun Magpie’s Nest antiques fair 9.30am to 3.30pm
- 10 Thur The centreTalks feature Catherine Grigg on A Victorian Christmas. See poster page 36
- 11 Fri Bingo in the community centre. The fun starts at 2pm
- 11 Fri Bourne End WI are holding a ladies fashion show and pop-up shop event at the community centre at 7pm See report page 29
- 11 Fri Bridge Supper at Pinder Hall, Cookham in aid of Earthquake Relief Fund to rebuild a school in Nepal 6.30pm for 7pm start. Cost per table of four £50. Please contact Margaret Maskell on 01628 674036 or email memaskell@btinternet.com
- 12 Sat Bourne End Community Market 10am – 1pm in the library
- 13 Sun Table top sale at the centre 9.30am to 11.30am. Call Caroline on 01628 485642 to take part
- 18 Fri Bingo in the community centre. The fun starts at 2pm
- 18 Fri Social dance with Barbara and David at 8pm. Good dancing in friendly company
- 25 Fri Bingo in the community centre. The fun starts at 2pm
- 26 Sat Christmas lights celebration in Wooburn Green at 4.30pm (provisional date when going to press). See page 3 for details

The next issue of Target will cover December and January. Email editor@targetmagazine.org.uk by Monday October 31 to get your event included in the calendar. The magazine will be published on Friday November 25.

Please call into the centre and pay for your copy of Target

Target Quiz

Sponsored by The Falcon Pub, Wooburn Moor

Number 94

"Here's some general knowledge" says Penny Walsh "and some not so general - have fun!"

Write your answers on an envelope, add your name and address, include £1 entry fee then take it into the community centre office for a chance to win Penny's mystery prize. All money raised goes to the community centre.

- 1 What is a boomsland?
- 2 Who first swam the English Channel?
- 3 What is Leerdammer?
- 4 What is a sampan?
- 5 What is a Fallabella?
- 6 What is the maximum break in snooker?
- 7 What is a Maraschino?
- 8 Where does mayonnaise come from?
- 9 What is a Suffolk Punch?
- 10 How many yards in a mile?
- 11 What is the French equivalent to the poppy?
- 12 What is the next number in this sequence 9, 16, 25, 36, 49 ?
- 13 What is a Osier?
- 14 What does RNLI stand for?
- 15 How many fluid ounces in a pint?
- 16 Who designed Marlow Bridge?
- 17 Where is the Menai Strait?
- 18 What is Mach 1 better known as?
- 19 Who wrote Swallows and Amazons?
- 20 Who composed the Nutcracker Suite?

The closing date is Friday November 4

ANSWERS TO QUIZ 93

1 Hobart 2 Vienna 3 Athens 4 Ankara 5 Mumbai 6 Paris 7 Krakow 8 Ottawa 9 Edinburgh 10 Belfast 11 Belgrade 12 Rejkavik 13 Valetta 14 Tel Aviv 15 Rome 16 Colombo 17 Stokholm 18 Lisbon 19 Brussels 20 Madrid. The winner is: Pat Kurdi, Riverside, Cores End



The Falcon Pub

Watery Lane,
Wooburn Moor, HP10 ONE

Tel: 01628 522752

Monday - Quiz Night
from 8.45pm

Tuesday - (every other) Open
Mic Night pop down to play,
sing or just listen

Wednesday - Rib Night (cooked
to my secret recipe)

Thursday - Two for one
evening menu

Friday - Menu specials

Saturday - Meat raffle drawn at
6.30pm, tickets on sale all week

Sunday - Traditional Sunday
Roast 12 to 3pm



Quickstep



Top quality shoe repairs by experienced craftsmen

Key cutting, engraving

Sports trophies, corporate awards & gifts

Watch repairs, batteries & straps

Digital photo printing, passport & ID photos

Mobile phone accessories

Agents for dry cleaning, mobile phone, tablet & computer repairs



71 The Parade, Bourne End, Bucks SL8 5SB Tel: 01628 524653

Email: quickstepengraving@hotmail.com

10%

DISCOUNT WITH THIS VOUCHER AT QUICKSTEP BOURNE END
ON SHOE REPAIRS, KEY CUTTING & ENGRAVING Valid until 30.11.2016