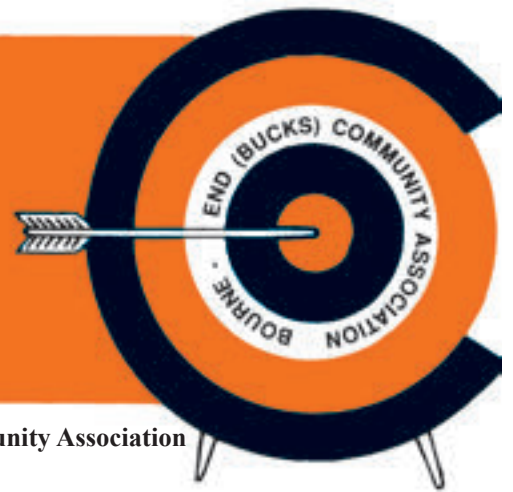


target



VOL.52 No3
JUNE/JULY 2016

£1 *Suggested price*

The Journal of Bourne End (Bucks) Community Association

Police escort for school's Big Pedal kids

The national campaign, Big Pedal, run by Sustrans* in April to encourage children to do the school run on their bikes and scooters to benefit their own health, fitness, wellbeing and connection to their community, was wholeheartedly supported by the pupils of Claytons Primary. Helen Fisher reports...

"Let's make a statement!" Those were the words of Police Sergeant Hughes as he led a large and enthusiastic peloton of Claytons school pupils and parents from The Parade along Marlow Road to school.

We brought the peak time traffic to a standstill in a very good way to remind residents and commuters that our school children want, need and deserve safe routes to school.

"That was awesome, I can't believe we did that," shouted Year 4 pupil, Simon Arnold, as he parked his bike at school. And that was true of the whole



Adam's the apple of our eye...

TV presenter Adam Henson, best known appearing on farming programmes, was a charming host at his Cotswold farm when a local group on a Jamie's Tours coach trip visited in April.

He even posed with a copy of *Target* magazine and a rather handsome beast called Archie (see full picture page 7).

two week campaign which culminated in this group ride to school.

Clayton's pupils enthusiastically supported the Big Pedal campaign. They quadrupled the number of sustainable school runs and on five days over half the children cycled and scooted to school. And they enjoyed it!

Pupils kept a close eye on their progress in the national competition in assemblies and are proud to have come out the best in Bucks.

"It's great to see so many children on their scooters and bikes," remarked one parent. Many mums and dads were tempted back onto their bikes too.

Clayton's Facilities Manager was amazed by the impact on traffic and congestion on Wendover Road. "The number of cars has halved at least and the car

park has spaces for the first time ever. The school run is almost tranquil," Mr Mathieson remarked.

Bourne End bike shop On2Wheels donated prizes for the daily Golden Lock competition and local branches of Waitrose and Sainsburys supplied healthy snacks for bike breakfasts. Many thanks to all supporters including PCSO Stephen Watkins and Sergeant Hughes from the local police team.

With bike sheds and scooter parking full to bursting even now the Big Pedal has ended, it looks like Claytons pupils are committed to sustainable journeys to school or as one pupil put it: "cycling to school is great!"

* Sustrans is a UK charity enabling people to travel by foot, bike or public transport for more of the journeys they make every day

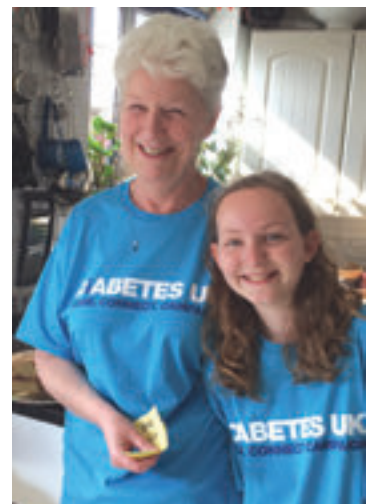
Diabetes day raises thousands

Carol Bailey once again opened up her Blind Lane home in May to raise funds for a cause very close to her heart.

Carole's granddaughter Amiee, 11, was diagnosed with diabetes at the age of three and this kickstarted Carol into launching her annual Fun Day to help Diabetes UK.

In the past seven years she has raised more than £15,000. This year's event with tombola, prize draw and lots of other moneymaking stalls, raised a very impressive £3,904.

Carol told *Target*: "I would like to thank all my family and friends for donating and helping on the day and all the local businesses that supported us, in Flackwell Heath - The Cherry Tree, Cleopatra, Costa Coffee, Daisy Gift Shop, Flackwell News, The Green Dragon, Mitz's Hairdressing, In Wooburn Green - The Queen & Albert and The Red Lion, in Loudwater - The Papermill and in Bourne End Martin Adams. It doesn't matter how much effort we as a family put into this day, without friends, family and all the supporters it would not happen. I cannot thank them enough."





Target magazine is published by Bourne End (Bucks) Community Association and distributed free to over 5,000 homes in the local area. The distribution network includes Bourne End and Wooburn Green as well as the outlying hamlets of Hedsor, Well End, Little Marlow, Cores End, Upper Bourne End, Wooburn Common and Wooburn Moor.

Bourne End (Bucks) Community Association

The Centre, Wakeman Road, Bourne End, Bucks SL8 5SX
Telephone: 01628 522604
Office Hours: Mon - Fri 9am to 4pm
Senior Administrator: Sue Ambrose

Visit: www.bourneendbucks.com for current information or email office@bebca.org.uk

Editor

Debra Aspinall
Tel: 07881 558027
editor@targetmagazine.org.uk

Managing Editor & Distribution

Barrie Penfold
Tel: 01628 525415
email: managingeditor@targetmagazine.org.uk

Advertising & Production

Barrie Penfold
Tel: 01628 525415
advertising@targetmagazine.org.uk
Our advertising rate card is on www.bourneendbucks.com. Click on Community Association, then Target.

Proofreading Christina Martell and Meriel Riseley

Printers

Gpex, Pinstone Way,
Gerrards Cross SL9 7BJ
Telephone: 01753 887450



All material appearing in Target is the copyright of Bourne End (Bucks) Community Association. The Editor reserves the right to select letters and reports for publication and to edit for grammar, style and length.

BULL'S EYE

It seems like Spring crept in and out very gingerly this year. I guess many of us were still waiting for Winter to do its worst, then, by the time we realised we actually weren't going to get any snow, it was already Easter and people were dusting off their barbecues.

Wooburn and Bourne End are looking particularly stunning this year thanks to the hard work of some very dedicated people on the local parish councils and other groups, such as litter collectors. And not only has essential repair and maintenance work been going on to preserve our public spaces, but some real improvements have been made too, encouraging more biodiversity and wildlife to flourish.

Below is Cllr Katie Lamb's latest report on some successful local nature schemes... **Debra Aspinall, Editor**

Plants, ponds and parks

Sitting here with the sun pouring in through the window it really does feel like Spring has sprung and Summer is knocking impatiently on the door. The trees in the Blind Lane Community Orchard would certainly agree. I'm pleased and slightly relieved to say that all have made it through the cold and frosty weather and have started to bud. I'm hopeful that some will produce fruit this year for us all to try.

If you have been out and about in the parish you will have seen that many of the bird boxes are now occupied and have become homes to bird families of all types.

We have noticed an increased number of long-tailed tits using them too. Twenty eight boxes have been confirmed as having nests inside them and we are seeing and being told about more each day. If you see any activity please do drop me or the office an email and I can let the families know that their box is in use.

The big news this time is that the pond in The Warren is now finished and full of water. We have been doing our homework and taking advice about which plants to plant in and around it and hopefully by the time this goes to press we will have planted them.

I know this is an impossible ask, as a dog lover myself and the owner of a new puppy who loves jumping into the bath every time I run one (since when did border collies love water!). But if we can try and keep our furry canine friends out of the pond, just until the banks have settled and the plants have stretched their roots and have bedded in, it would give them a fighting chance.

The pond was first dug (and paid for) as part of the Queen's Silver Jubilee celebrations in 1995 and it feels fitting that in the year of Her Majesty's 90th Birthday we have reinstated it. The work on the pond in Farm Wood will also start very soon. Farm Wood is well worth a visit. As I write the carpet of bluebells is just stunning, let alone the uncurling ferns and all the other plants that are just starting to stretch and grow. Not only is it a joy for the eyes, but the nose too as every now and then you get a waft of the emerging woodland garlic.

If you have been into Wooburn Park you will have seen that all the cowslips are now out (as pictured on our new Wooburn and Bourne End Parish Council Facebook page). The Parish Rangers have planted more wildflower seeds to complement the flora which is already in the park. Even with a new ranger (welcome Tom) I don't know how they find the time to complete the never ending grass cutting and maintenance the parish council has taken on after Wycombe County Council stopped doing these jobs.

At the end of May all of the working parties and committees are stood down, chairmen are re-elected, and working parties are set up again if the full council thinks they are still needed. I would like to take this opportunity to say a big thank you to my fellow councillors, to Roland and Shane our Parish Rangers and to everyone who has either stood out in the cold making bird boxes or taken the time to write or email in.

Thank you for all your hard work and commitment to our projects so far. Facebook followers, do have a look at our page to keep up-to-date with all the latest news. We hope you continue to use and enjoy all our parks and woodlands this summer.

Cllr Katie Lamb Kate.Lamb@live.co.uk



ABOUT TARGET

Target magazine was launched in 1964 to provide information about the new Bourne End Community Association, with the name referring to the money required to build a new community centre. Over the years the magazine has grown, and its distribution area has been extended as the population has expanded through Bourne End, Wooburn Green and the surrounding villages.

Bourne End Community Association was formed in 1962 by local people who wanted a social centre to meet the needs of a growing community. Fund raising and determination saw the community centre open in Wakeman Road on 28 October 1967. Another hall was added a few years later and constant improvements have been made over the years.

See pages 36-39 for more information on the facilities and activities available at the community centre.



WOOBURN RESIDENTS ASSOCIATION

By Margaret Amos Secretary to the Association

There appears to be much changing around Wooburn: Flackwell Financial Services, great supporters of WRA, has moved from The Green. The bicycle shop in Suffolk House has gone. The new homes in The Comptons along Wycombe Lane are ready for occupation, and The Queen & Albert Pub on The Green has their red umbrellas out – always a sign that summer is on the way.

The following issues have been of concern to residents at recent meetings.

BAM, a company in Glory Park, has appealed to Wycombe District Council against its decision not to allow the change of use from offices to houses. Apparently there is no change in WDC's decision for this to remain as a designated employment site as it will be needed over the course of the New Local Plan – some 20 years.

The ever increasing car parking along Wycombe Lane is of great concern to residents, particularly around Mercury Park. We have started discussions with the management to ascertain why this has happened.

Regarding the possible development of Slate Meadow, the Slate Meadow Liaison Group and WRA sent in comments on the Wycombe Reserve Sites Draft Infrastructure Delivery Plan in March. The liaison group will probably not meet again until the

submissions have been considered and the developers have put forward a planning brief.

The association is still hoping to convince the parish council that fencing around the children's play area in Wooburn Park is needed to make it safer for small children because of its proximity to the road and river. Fencing would keep dogs out of the play area and make a park experience more relaxing for parents - and dog owners.

Wooburn Fête – Saturday 18th June, 12-4 pm Wooburn Green – (see poster page 10)

The excitement and enthusiasm is mounting. We are delighted that the Meadows School Choir is singing again this year and the children from St Paul's School are country dancing.

Alongside the very popular water zorbing this year will be bungee trampolines. If expending this amount of energy is not your thing, come along and enjoy a delicious cream tea while listening to Maidenhead Concert Band.

Our community groups and churches will be there, along with community craft stalls. Many young people from 1st Wooburn Scouts will be in evidence encouraging you to spend your money on the mill spinner, coconut shy, chimney hoopla, trebuchet and many other fête games.

Money raised from their games goes directly into their group funds. You can feed the family on our

delicious hot dogs and beefburgers too.

A fête programme will be on our website.

Make a birthday card fit for a Queen competition

Children (up to the age of 11) are invited to make a birthday card fit for a Queen. Entries should be posted in a special box in Wooburn Green Pharmacy by Saturday June 11.

Cards will be judged by Simon Elvin of the greeting card publishing company in Wooburn Green and prizes will be presented at the fête.

We are very grateful to VW Citygate Van Centre for their continued generous financial support and that of CALA Homes and Allen Roofing.

Do come along; meet your friends and neighbours and join in the fun.

Stop Press

When the Future of The Wooburns questionnaire was undertaken residents wanted a farmer's market on Wooburn Green. For various reasons this is not possible. However, I am pleased to be able to tell you that the following has been arranged:

The Falcon Food & Craft Fayre which is on June 4 from 10am to 2pm at The Falcon Pub, Watery Lane. There will be children's craft activities plus stalls with jewellery, cards, crafts, jams and chutneys, cheese, cakes (including gluten, dairy, sugar and egg free), Forever Living products, painted glass, Italian foods, fashion & accessories, gifts, fudge, savouries, knitted items and candles.

Next meeting

Monday July 11, at 8pm. Please check our website for venue – www.wooburnresidents.org and you can visit us on Facebook at <https://www.facebook.com/wooburnresidents> You can arrange to receive our emailed monthly newsletter via our website.

MARTIN VEHICLE SERVICING ADAMS

YOUR LOCAL MOT SPECIALIST

A friendly family run business with
30 years experience

Servicing all cars, new and old also light
commercial vehicles.



- General car repairs and maintenance
- Free courtesy car available
- Tyres, exhausts and batteries supplied and fitted
- Latest diagnostic equipment for all makes of vehicle
- Air conditioning service available
- 30 Years Experience



01628 850000

email: info@mavs.co.uk

Alexander House, Wessex Industrial Estate, Bourne End



Support local shops and businesses



It would be good to report that the last couple of months have been filled with positivity.

Unfortunately, as with Rome, nothing around here seems to have been built in a day.

Dealing first with the McCarthy & Stone development that remains unfinished. The actual structure with the red brick, white panels and pitched tiled roof looks in keeping with the other buildings along The Parade. But the front still remains unfinished as does the rear parking area and, most importantly, future residents are having to sell homes and move into temporary accommodation due to delays in completing the apartments.

And so to further unfinished business with regard to Slate Meadow and, once again, I must stress that these views are mine and not those of any other member of the Liaison Group, although some will

probably agree with me.

The group last met back in December and then again in February. Since then nothing. We are being told by the WDC officers that there is nothing to talk about. However this should be for the Liaison Group to decide.

Since that last meeting some members of the group have seriously questioned the Bucks County Council's report with regard to flooding that occurred in Cores End Road in 2014. If you read the original report no mention is made of the high levels of ground water during that period although some seriously erroneous suggestions were stated. Just one of many is that flooding in Chalklands was a result of the river flooding. I used to live in Chalklands so know for a fact that the River Wye, Thames and even the Abbots Brook run nowhere near Chalklands. Their pond problem is created by bad drainage and the fact that water runs downhill.

Being positive it has been possible to get some of the flooding report changed and hopefully we have made the officers who deal with these issues aware of the real cause of the problem created by excess ground water around Cores End Road and Slate Meadow.

The other major concern that the Liaison Group has not been able to discuss with the officers is with regard to the future development proposals for Slate

Meadow. There are huge inadequacies in the infrastructure needs – traffic, schools, health provision, retail and parking. Before any new development is agreed, particularly a large one, it needs to be proved that the infrastructure elements are able to cope with the increase in population numbers.

My personal perspective is that building 150, this is the latest figure that has been quoted, houses on Slate Meadow will put an intolerable strain on local services. We have another meeting at the end of May when the Liaison Group hopes to convince WDC officers that there are serious problems in relation to flooding and infrastructure.

Finally we can perhaps be more hopeful about the outcome of the Public Inquiry to confirm the creation of a brideway along the route of the old railway track between Cores End Road and Wooburn Green. After three days of discussions the Inquiry has been adjourned for between one to four months. I do hope that a satisfactory conclusion can and will be reached for this direct and extremely environmental friendly and safe route between our two villages.

Thank you for reading this and if anyone has any queries on these issues please feel free to ring.

Jim Penfold
01628 525415

Beginner & Intermediate Woodworking Classes



Next classes start 27th (beginner) & 29th June (intermediate)
01628 290 770
www.thewooburncraftschool.com

Bourne End Home Security Systems Ltd.

DOMESTIC AND COMMERCIAL
INTRUDER ALARMS
CCTV
INTERCOMS
SECURITY LIGHTING
FIRE ALARMS

- Local privately owned company
- SSAIB insurance approved
- Audible and monitored systems
- No binding contracts
- Existing systems maintained and repaired
- 20 years experience
- NACOSS NSI Gold monitoring

Your *local* security expert
For a FREE survey, contact us today!

01628 520162
rogerelam@behss.co.uk
www.behss.co.uk

25 The Courtyard
Furlong Road
Bourne End
SL8 5AU



CHATTELWORTH LIMITED




CONSTRUCTION
All aspects of general building works:
*Extensions/Alterations *Renovations *Carpentry/Joinery
*Brickwork/Paving *Plastering *Commercial & Domestic

FULL DECORATING SERVICES
*Painting * Internal/External *Wallpapering *Commercial & Domestic

GENERAL
*Roofing/Slating/Felting *General Maintenance

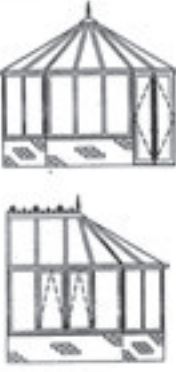
PURPOSE MADE JOINERY
*All aspects of purpose-made joinery from our own in-house workshop

MONARCH windows, doors & conservatories
also *Plastic Fascia *Barge Boards & Cladding *Guttering
A first class service at very competitive prices, call now for a no obligation quotation

*A members of the Federation of Master Builders and
FMB (Masterbond) Warranty Scheme*

Chattelworth Works,
95a Queens Road,
High Wycombe, Bucks HP13 6AH

Tel/Fax 01494 461544




saxons



2 Furlong Road
Bourne End
Bucks
SL8 5DG

Come and visit our London trained professional stylists working to the highest standards
Whether you require advice on cutting or colour techniques Saxons is the salon to be seen at!
Open Monday – Saturday
9am – Late (by request)
Saxons welcomes your call
01628 524255

A. Stride



Heating & Plumbing
Roofing
General Building
Painting & Decorating
Replastering & Guttering
Service

Estimates Given Free

Telephone: 01494 440219

Mobile 07973 439781



THE WALNUT TREE

HEDSOR ROAD, BOURNE END, SL8 5DN

Tel: 01628 532417

www.walnuttreebourneend.co.uk

NEW

SPRING / SUMMER MENU

*1ST FLOOR MEETING /
PRIVATE DINING ROOM*

*PIZZA & PASTA THURSDAYS
6PM - 9PM*

*TAPAS TUESDAYS
6PM - 9PM*

GARDEN & PLAY AREA

OFFERING PUB FAVOURITES
TRADITIONAL SUNDAY ROASTS &
BOARD SPECIALS
ALL FRESHLY PREPARED

DOGS & MUDDY BOOTS VERY WELCOME!

**HUGHES
BUILDERS MERCHANTS**

CALL IN FOR A FRIENDLY, PERSONAL
AND LOCAL SERVICE

BRICKS, DIY SUPPLIES, BLOCKS,
AGGREGATES, PAVING SLABS,
TIMBER, CALOR GAS, PAINT,
SALT and COAL

01628 522022

24 Whitepit Lane, Flackwell Heath, Bucks.

**For Hire - Two Halls
& kitchen facilities**

Ideal for children's parties; aerobics;
dancing; ballet classes; meetings, etc.

Contact Ann 01628 526865
or Muriel 01628 523622

Ample parking @ Cores End Church

ABSOLUTE CLEANING

Windows & Gutters
Domestic & Commercial

Ring Mark Holt

0791 2985500



Another Answer

Books and Accounts

Efficient, Friendly and Local

TEL: 01628 530805

EMAIL: sylvia@anotheranswer.co.uk

First Floor, Bourne House,
Cores End Road, Bourne End SL8 5AR

www.anotheranswer.co.uk



Services provided by accountants and
supported by
AAT member since October 2015



BOOKKEEPING • PAYROLL • VAT • TAX RETURNS • ACCOUNTS

11 PLUS TUITION

For the 11+ Transfer Test

Experienced primary teachers in
Bourne End

01628 528455 / 521828

www.11plusacademy.com

We'll open it now!



**30 MINUTE
RESPONSE**

- UPVC
- CHUBB
- YALE
- UNION
- ERA
- LEGGE
- ASEC
- VIRO
- ABLOY
- CISA
- ASSA

**All Domestic
& Commercial Lock Problems**

Solved by your Trusted & Reliable Family Business

- POLICE RECOMMENDED AND INSURANCE APPROVED LOCKS SUPPLIED & FITTED
- ALL TYPES OF DOOR & WINDOW LOCKS FITTED, OPENED, REPLACED & REPAIRED

01628 528433

Or if line busy: MOBILE

07831 487222

www.allsecurehomes.co.uk

10 Thames Close, Bourne End Bucks SL8 5QJ

FREE Advice, Surveys & Estimates



Chubb Locks Yale **24 HOUR SERVICE**



We will give you
a competitive
FULL QUOTE
before we start any
locksmith work

TALK TO A LOCAL LOCKSMITH ... not a Call Centre!



**Arnold
Funeral
Service**

21-23 Little Marlow Road Marlow
01628 898866

891 London Road, High Wycombe
01494 472572

- Traditional and Alternative Funerals
- 24 Hour Attendance
- Pre-Payment Plan



www.arnold-funerals.co.uk

Please support Target advertisers



Marina Life with Peter Osborne



I would just like to open on the Brexit debate. We are quite often asked where we stand on this hot topic, however, this is not the place for personal opinions. It's a tricky one as we have all been told that if the result is in favour of 'Leave' we will go into financial meltdown and end up in a war, but we have not been told what happens if we 'Remain'?

Are we not in a financial meltdown and already at war? I do understand that it is a tricky debate, but why should we trust financial projections? If you look back historically how many Chancellors have actually predicted accurately?

Anyway, Bourne End Marina is an independent state outside of the European Union, the only union we are in is a trading partnership with the People's Republic of Cockmarsh whose capital is The Bounty, and we have our own currency as well. The Laws of Common Sense is our constitution.

The season started with a bang when it was hotter here than the dark side of the sun apparently. Well it all changed and as I scribe this missive the river is on Red Boards (you are advised not to navigate) and there is a cold blast coming down from the Arctic. I am wondering if the red boards are a precaution due to icebergs.

Once this cool spell passes we are hoping summer really will be here.

This is the period of the year where we still have a great deal of maintenance work to do on the boats, but this gets interrupted by people arriving on the fuel pontoon wishing our services so it becomes a very, very busy period for us (well for Matty and Chaos anyway).

The crane is now fully functional after its surgical operation on the slew gearbox and having been out of service for a total of 10 days. This may not sound a long time, but the reality of it was that our work timetable suffered and it took a lot of effort to catch up and satisfy our customers' demands.

A few 24 hour shifts soon rectified the backlog and we are now on target again.

Demand has been high for maintenance on

the boats this year, possibly as some owners have delayed the work during the period of austerity.

I don't believe the upturn can be due to the quality of work Matty and Chaos produce, it must just be desperation on behalf of the owners to have their boats smartened up.

Basically, because the marina is attended every day and has a 24-hour life per day we have to keep on top of the maintenance of the facility otherwise everything goes kaput at once which would impede our daily operations.

The current upgrade is to revamp the WiFi which has been failing at the top end of the marina, so the whole system is being renewed. It is very important that our boat owners have access to WiFi, whether it's for work reasons or to entertain the kids by way of social media or movies.

The tug has had a further mission recovering a narrow boat (14-15 tons) from the Cliveden Reach up to the marina while the river was in flood. This needed to be effected due to the owner who was moored up there becoming stranded as the water levels rose and the current strengthened.

He was running out of water, his loo was full and other victuals were becoming scarce but his engine was not powerful enough to push though the narrows below Cookham Lock where the river races though in times of high levels.

Chaos and Matty managed it, albeit at a snail pace though the narrows. The owner was most relieved to be back at Bourne End as were his two dogs I believe. Yet another Boys Own adventure for the tug (as in the adventure comic from many years ago, not a boy band).

I just wish to point out the obvious. June/July is the European Championships in football being held in France. Please check the fixtures as on the times England are playing all our service costs will be increased by 500%. I hope you can understand the subtle hint. Mind you it will probably be for a fewer occasions that one would hope for.

The demand on our car park is now increasing due to more activity of boat owners and as the restaurant becomes more popular. Please do not use the carpark other than when visiting the marina or the restaurant. The entrance is now manned at weekends and Bank Holidays and should you not fit the criteria for entry you will turned away.

During the week marina staff will be keeping an eye open for intruders and, if necessary, will evict you with maximum force – Rocky will be let loose. We thank you for your co-operation.

Matty and Chaos have been very busy and the prognosis for the coming weeks is not looking good for them either as we are over full with boats for the moorings and the work keeps coming in so I am being lenient with them at the moment.

The problem that we have is that we are constricted by space and we are unable to make any extra, this means that we are continually moving boats around to make the best use of the pontoons available to us. Also when moving boats to a particular mooring we have to take into account the customers' ability to get onto/off the boat and actually get in and out of the mooring. Not all owners are as young and agile as me. We always get there in the end.

It's currently half seven in the morning and the service pontoon is full with the Magna Carta (a 110ft-long hotel barge) which is seeking refuge from the river conditions. A boat has come in overnight for maintenance work and we have two other boats moored there as well. Until we can clear the pontoon we are unable to accept boats for fuel etc. I can guess what the boys first job is this morning.

We are looking forward to a busy season but always have time to welcome you should you come down to the marina, it's always good to see you!

Until the next time.

Peter Osborne, Marina Manager

Classic Beauty
for
Beauty treatment from fully qualified and caring therapists
Using top quality products from
Pridara Skin care, *Caci* non surgical facial and body treatment
Jessica manicure and pedicure
The unique and hygienic *Phd* waxing system
Open 9am until 8pm most nights
17a Soho Mill, Wooburn Green Tel: 01628 850688

HOME PC HELP

- All PC/networking problems
- No callout charge
- No fix – no fee
- 35+ yrs experience

For friendly, personal advice call

01628 630096
or 0778811 3279
(7 days inc evenings)
www.homepchelp.org

Colin's Garden Services
Tel: 07884 262871

Garden Services

Grass Cutting
Maintenance
Patios

Hedge Cutting
Fencing
Turving

TAKE YOUR TARGET



Visiting Adam's Farm (and getting up-close with Archie)

Meeting Adam Henson, rural TV presenter, farming guru and fast becoming a national treasure, was definitely the high point for those of us who signed on for a day out in the Cotswolds with Jamie's Tours.

Not only did we get a fabulous sightseeing trip through glorious countryside, and a stop in the golden town of Burford, but our final destination was Adam Henson's Cotswold Farm Park. And it happened on one of the very few warm and sunny days in April.

Nibbling was all part of the pleasure as lambs, baby goats, calves and chicks took the opportunity to get treats from children (and adults) as they wandered around the paddocks.

Adam's father Joe Henson had started the Cotswold Farm Park project in 1971 to protect rare breeds of cattle and sheep when they were in danger of disappearing forever. Through the seasons and years they saw numbers increasing and, in many circumstances, were able to return small herds of sheep and cattle to their natural habitats all over the country.

Returning from a recording session, Adam strode out to meet and chat as visitors asked about the family's dog and her puppies or just took pictures with him to remember the day. *Target* did one better by asking for a picture with Archie the Highland Bull. Invited into Archie's paddock Adam gave his very special big fella a rub and posed for a picture. Thanks to Adam for a special 'Take Your *Target*' and to Jamie for the tour which was enjoyed by all.

Our photos show Adam with Target and Archie the bull, bottom right Andrea, Robert and Carole with some new lambs, and top, the day trippers with their Targets and Jamie on the right.



Don't forget to take your *Target* with you on any trips over the summer and send us your photos (contact details page 2)



There is a wonderful selection of mouth-watering dishes on the comprehensive menu at The Last Viceroy. They include coconut lamb, apricot lamb and cashew nut chicken alongside starters, specialities, traditional Balti, Tandoori and Biryani dishes as well as delicious seafood and vegetarian choices. The friendly and attentive staff will advise you if you are unsure about any dishes on the extensive and varied menu. You can opt for the Khas-e-Viceroy at £24.95 per person where the chef will prepare a mixed starter, main dishes and side dishes with rice and bread. Or choose the chef's special dishes which are cooked with fresh ground spices and prepared by a slow cooking method to bring out the delicious flavours; six hours' notice is required for these meals. The restaurant is well-established, having opened 28 years ago. Its cuisine attracts regulars and newcomers alike and its striking interior is divided by floor-to-ceiling pillars, making The Last Viceroy an ideal venue for a cosy dinner for couples or large parties. Open for lunch, dinner and take-aways seven days a week.



74 The Parade, Bourne End SL8 5SS
01628 531383 / 530798
www.thelastviceroy.co.uk



Councillors, hello and goodbye

The parish council has co-opted another member and we would like to welcome Mark Woodall who will represent the Bourne End Ward. We hope that Cllr Woodall will find his time on the council rewarding and we look forward to his input.

We are sad to report that Cllr Brian Pollock has decided to retire from the parish council. Brian joined us last year and used his extensive knowledge of planning matters to help us on our Planning, Highways & Lighting Committee. He will be missed by everyone and we all wish him well in the future.

This keeps our number at fifteen with two spaces unfilled, both for the Bourne End Ward.

New groundsman

We have recently taken on devolved services from Bucks County Council which means that we will now be cutting the verges and hedges on the highways that are not privately owned.

As this means a lot more work for the groundsmen it was decided to recruit a third person to spread the workload. Tom Enticknap has now joined Roland and Shane and is settling in very well.

Clean for the Queen

“Clean for the Queen” was a nationwide campaign to clean up the countryside in time for the Queen’s 90th Birthday in April. A litter blitz was held in March when groups and individuals came together and litter picked an

area where they lived. The parish council were invited to participate and our receptionist Penny Baron, who liaised with the various groups along with Cllr Fiona McGarel-Groves, donned Marigolds and grabbed purple rubbish bags to join others in the clean-up. Unfortunately the event clashed with Mothering Sunday so involvement was not as high as we would have liked. However 98 sacks were duly filled, put into dedicated waste skips by our groundsmen and collected by the Chiltern Waste Team and Wycombe District Council. A big thank you to all those who participated.

The Queen’s 90th birthday celebrations

(see report and photos page 18)

Dog poo in The Warren

Please would dog walkers ensure that all dog mess is picked up from the new footpath through The Warren in Wooburn Park. It has been reported that the new wood chipping that covers the footpath is being kicked over the dog mess instead of the mess being picked up. This means the dog mess can’t be seen and gets trodden on. There are dog waste bins provided.

Short and sweet

It has been brought to our attention that people are cycling along the footpaths in Farm Wood. We would like to remind everyone that it is illegal to cycle on footpaths.

The trout from the “Trout in the Classroom”

initiative have been released into the River Wye to restock the dwindling numbers. We hope they will be left alone to grow to full size.

The pond in The Warren is now refurbished and filled with water. The edges have been backfilled with soil which has been smoothed down and is being seeded and planted. Please could dog walkers refrain from letting their dogs go into the pond as the grass seed and plants won’t have a chance to establish if they are continually disturbed. Also the new liner could be damaged by claws and sticks.

The joint winners of the best Peggs allotment competition are Mrs S Hunt (plot 9A) and Mrs G Bennett (plot 18). The winner of the best Wooburn Town allotment plot is St. Paul’s school (plot 13). The winners of the best shop front are Sapphire in Wooburn Green and Bourne End Cards & Gifts in Bourne End. Congratulations all of you (photos in next issue).

We now have an official council Facebook page you can follow. This page will be updated regularly with news and photos and is an information only page. If you have any issues regarding the parish please report them to the office either by phone on 01628 522827 or email clerk@wooburnparish.gov.uk

Meeting Dates:

Full Council: June 28, July 26

Open Spaces, Allotments & Burials:

June 7, July 5

Planning, Highways & Lighting:

June 15, July 6 & 27

F&GP: June 14 All meetings start at 7.30pm

Normal Parish Council Office opening hours are from 9am to 5pm each day.

Please call 01628 522827 if you have any queries, alternatively email the office at clerk@wooburnparish.gov.uk or visit our website for information on www.wooburnparish.gov.uk

**WOOBURN PARK LAWN
TENNIS CLUB**

Four floodlit,
artificial grass courts and
new clubhouse.

Senior, junior, mid-week and
family membership options.

For more information email
wpltc@sky.com or visit
www.wpltc.org.uk



**Bed and
Breakfast**

THE OLD COTTAGE
HEDSOR ROAD
BOURNE END
SL8 5EE

www.theoldcottagebourneend.co.uk
Tel: 01628 521348
Mobile: 07796 938369

stacey@theoldcottagebourneend.co.uk



MARTIN'S
Maintenance & Plumbing

Kitchens Bathrooms
Interior decorations
Carpentry & cabinetmaker

Mobile 07725059321
martinwhite26@aol.com

**Sick PC ?
Misbehaving Laptop?**

Visiting support for your
Computer problems.
'Silver-Surfer' & Saga
generation,
assistance & tutorials.

Jonathan - 01628 486712
www.ComputaSolv.co.uk

**"Fixing your computer
problems"**



**HAND MADE
FURNITURE**

Architectural woodwork,
furniture, antique
restoration, panelling,
staircases, gliding,
lettering,
woodcarving,
churchwork,
sculpture, interior design
and free advice.

**LILLYFEE WOODCARVING
STUDIO**

Lillyfee Farm Lane, Wooburn Common,
Bucks HP10 0LL
Tel: 01494 671690
Studio open for visits by appointment

WOODCARVING COURSES

Take a new direction and create beauty
under the guidance of experts. Call the
number above for dates and details.



From the ground up
Helping hand in the garden

Design, planting, maintenance
Garden care by local gardeners - 07863 735786

FOR SALE
STUNNING
MOUNTAIN
RETREAT
Gran Canaria



Large family home with garden and spectacular views. Ideal for someone who craves total peace and quiet. Perfect "lock up and leave".

Fully registered
100,000 euros or £79,773
Call 0750 863 8609
or email ewendyluckett@yahoo.co.uk



Casa Fresco
Cleaning Services

Raising the standard in domestic cleaning

- * Regular cleaning, weekly, bi-weekly or monthly
- * End of tenancy cleans
- * Spring cleans
- * Quality, vetted staff with smart uniforms
- * 1st class oven and carpet cleaning service

Call Jenny or Chris on
01628 521497

www.casa-fresco-cleaning.co.uk

HART TO HEART

Monday 20th June
at Phyllis Court, Henley
Exclusive drinks party at
this stunning riverside
venue for sociable
singles in their
50s & 60s

RSVP lynn@harttoheart.co.uk

www.harttoheart.co.uk



Aztec heating and plumbing

Repairs to all Gas
Boilers & Servicing
Contracts

Also General
Plumbing Repairs

Central Heating,
Pumps, Valves, Timers
& Programmers

Tel: (01494) 440219 home

Tel: 07973 439781 mobile

Tel: 07831 563477 mobile

SAMSON WINDOWS & DOORS

*Designed to look good
for a very long time*



www.samsonwindows.co.uk

Tel: 01628 524469

We have been in continuous trading within the local community for over 25 years. We supply and install a range of market leading windows and doors manufactured to exacting standards of quality and performance and installed to the highest levels of finish and workmanship. More than 76% of our work is secured by referral and recommendation.

We do not believe in the hard sell, nor do we offer discounts for quick decisions. Our quotation is offered without obligation and discussed without insulting your intelligence. You will find it extremely competitive.



- o A Rated PVCu windows and doors
- o Timber alternative woodgrain windows
- o Authentic style sliding sash windows
- o Composite entrance doors



AS GOOD AS NEW



Mobile Bodywork Repairs

DAMAGED YOUR CAR?
Scuffs, Scratches & Dents

Call Malcolm now for a free quotation!

Office: 01628 532586 Mobile: 07786 482262

Bourne End Cards & Gifts

Father's Day is Sunday 19th June

Father's Day is just around the corner and we have a few fun gifts for Dad, to go with a huge selection of Father's Day Cards for you to choose from!



We also have a great selection of Exam, Congratulations, Graduation and Thank You Teacher cards

And when exams and school are over for the summer, let's keep those little fingers busy, with one of our range of craft and activity tins. Whether travelling in the car or going to a friends to play, these compact little wonders will save the day!!



Dilly's words of wisdom

Today and always...
May nothing but
happiness come through your door

19 The Parade, Bourne End, Bucks SL8 5SB

Telephone: 01628 521509

Email: tony@bowlerwright.co.uk

Wooburn Residents' Association
www.wooburnresidents.org
Charity No. 288430

WOOBURN FETE

Saturday 18th June 2016
12 - 4 pm
The Green, at Wooburn
(no entry charge)

COME ALONG AND ENJOY

Children from St Paul's School and The Meadows School performing
Maidenhead Concert Band
Zorbing and Bungee Trampolining
Kiddies' ride
Winners announced of Design a Birthday Card fit for a Queen Competition
Races and Tug of War
Local craft and community stalls
Barbecue and cream teas
Traditional Fete Games
1st Wooburn Scout Group

Posters and flyers sponsored by CALA Homes

Citygate Van Centre
Wooburn Green
Official Commercial Vehicle Sponsor
www.citygate.co.uk



TAKE YOUR TARGET To a family reunion in Reunion

Kathy and Roy Jackson from Chiltern's Park in Bourne End packed a Target along with wedding gifts when they flew off to Reunion Island in the Indian Ocean for a family wedding.

Their terrific photo shows them (on the right) with some of the wedding party who made a very early morning start to reach the highest point on the island and see extinct volcano craters and awesome views.

Reunion has a live volcano at the southern eastern end; luckily it didn't erupt during their visit. It is a beautiful island and well worth a visit for anyone travelling to Mauritius.

More support for Soroptimist Kori Development Project

Saris shimmered and there was eating, dancing and singing at a recent event organised by some of the Sikh ladies of Maidenhead who are now regular supporters of Soroptimist International Thames Valley's Kori Development Project.

Delicious curries were prepared and served by this enthusiastic group of supporters and much merriment followed as karaoke numbers were performed by future pop stars.

Soroptimists helped out by providing desserts and more than £2,000 was raised.

The Kori (Women's) Development Project aims to educate, empower and enable women in the Kori District of Sierra Leone. Its founder Rose Simbo, a member of SI Thames Valley, originally came from this area where she is also an effective

campaigner against FGM still practised there.

Now, thanks to the Kori Project which she set up, women work the fields to produce crops to feed their families, to pay for their daughters' education and offer micro loans to members of their community.

In addition the project has funded a community centre which will shortly come into use and a library.

The Soroptimists have some enthusiastic Bourne End members (see their report on page 38).

If you would like to join us or learn more about the Kori Development Project and its exciting future plans go to: www.kwdp.org and www.sigbi.org/thames-valley.



Sew Sew Pretty

Quality hand-made curtains, blinds and soft furnishings
Contact Alison on 07747 778678
www.SewSewPretty.com
Alison@SewSewPretty.com

In Aid of St Nicholas' Church, Hedsor

HEDSOR FAIR

COME and ENJOY
A TRADITIONAL FETE



Boat Rides
Stalls
Raffle
Side Shows
Cream Teas

**25th
JUNE**

12 - 4.30pm
ADULTS £2
CHILDREN FREE
FREE CAR PARKING



at
**ORCHARD DENE
RIVERSDALE**
[SatNav :: SL8 5EB]

D&BDIGITAL
ENGAGING DIGITAL EXPERIENCES

**WEBSITE & APP DESIGN
FRONT & BACK END DEVELOPMENT
ECOMMERCE . SEO . SOCIAL
WE CRAFT EXPERIENCE ONLINE**

CALL 01494 853153 EMAIL damien@dandbdigital.com VISIT www.dandbdigital.com



CROWDEN
• COACHWORKS LTD •



- Car Body Repairs •
 - Garage Services •
 - Accident Repair Services •
 - Insurance Repairs •
 - Paint Spraying & Much More •
- We repair all makes and models and also deal with all insurance companies**

5A The Green, Wooburn Green, High Wycombe, Bucks HP10 0EE

Tel 01628 526463

www.crowdencoachworks.co.uk

Support your local craftsmen and traders



Kongs make it nine* in a row

The annual charity lunch at Kongs has become a Springtime tradition enjoyed by elderly residents and local volunteers. Proprietor Wing Tang is delighted to uphold this tradition and provided a thoroughly enjoyable occasion. In this ninth year more than 70 diners sat down to a Kongs Feast.

Looking back over the years more than 550 people have enjoyed this feast provided by Kongs and more than £3,500 has been raised for charities including Wye Valley Volunteers, Day Centre, Community Centre and Claytons School. This year the collection came to £310 for Scannappeal at High Wycombe Hospital.

As always the staff provided great service to make things special. "We love doing this" Wing Tang's daughter Man Wai told *Target*, "and our staff are always delighted to help."

David Davis organises the lunch and Jean Peasley provides a list of names. "We keep lists up-to-date" Jean said "to make sure that everyone gets an invite at some time as it is a very special occasion."

**In China the number nine is an auspicious number. When number nine is pronounced, it sounds like the word for "long lasting"*

Our pictures show diners enjoying their Chinese meal. Main picture, top left, shows l-r Man Wai Tang, David Davis, Lily Yu and manager Michael Chin

Take Your Target...

Lorraine Clark packed her *Target* when she travelled to Australia and spent her family time with her daughter. While her colleagues at Headway in the community centre shivered in March's icy blasts Lorraine donned summer clothes and enjoyed the sunshine. Headway is the brain injury charity that meets in the community centre and Lorraine has been a team member for many years.



Visiting the Falklands was an ambition for **Jack and Margaret Watson** from Cliffords Way in Bourne End and their 16,000 mile return trip met all their expectations. They flew there and back with the RAF, travelling on an Airbus A330 with service personnel who regularly train in the Falklands.

Jack said that the scenery was spectacular and there was a sense of remoteness with sheep making up the bulk of the population. "We hired a 4x4 as that's the only vehicle to cope with the roads which are little more than tracks." Jack said. There is one hotel in Stanley, but they stayed in a b&b which was lovely.

Their most amazing experience was seeing hundreds of penguins, elephant seals and albatross when they took a small eight-seater plane between some of the islands.



BOURNE END MOTOR COMPANY

Bourne End Motor Company was established in 1994 and in that time we have built a reputation for offering the personal and professional approach normally only found in the more prestigious franchised dealerships.

We have become recognised as one of the leading specialists in low mileage, privately owned cars with full service history. Most of these cars are between six months and four years old. As well as your regular family cars ie. Ford, Vauxhall, Fiat, Mini etc. we also sell luxury brands such as BMW, Mercedes.

Over the years we have built up a vast range of suppliers and through these we can source almost any make and model of car, all of which offer a significant saving than those offered by the larger Franchised Main Dealers whilst still matching their standards.

WAKEMAN ROAD • BOURNE END • BUCKINGHAMSHIRE • SL8 5SX • TEL: 01628 533 222 • FAX: 01628 530 264



- Local Family Business
- All Cars HPI Checked with Service History
- Computerised Stock Locator System
- Most Makes/Models available
- At least six months Warranty on all vehicles

TEL: 01628 533 222
WWW.BEMC.CO.UK

Exhibition at Stanley Spencer Gallery

Stanley Spencer: Visionary Painter of the Natural World
Until Monday October 31
Stanley Spencer Gallery, Cookham

If Stanley Spencer's beloved home village of Cookham was a 'village in heaven', this exhibition certainly seems to have all the qualities of an 'exhibition in heaven'.

It is resonant with glorious depictions of the natural world by the great 20th century painter, whose reputation continues to soar.

The works include exquisitely executed flower paintings, garden vistas and landscapes, forming breathtaking panoramas along the walls, interspersed by figurative and spiritual scenes set against further 'natural world' backdrops.

While wandering around the gallery, visitors may like to reflect on the work that goes into maintaining this unique operation. With tasks that include arranging loans of Spencer paintings from across the UK, creating a series of wonderful exhibitions,



running our lovely building, welcoming visitors, providing special sessions for schoolchildren and disabled people and organising publicity, there is something to challenge every set of skills.

Could you work here?

There is a constant need for knowledgeable, friendly and dedicated front-of-house staff, all of who are trained in the role and decide for themselves how often they wish to attend and when.

Everyone who works in the gallery is a volunteer and we always have a need to bring in new volunteers. So if you feel you have something to contribute and would enjoy this wonderful environment, do email Maura Carr maura.carr@dsl.pipex.com. We're only just across the river from Bourne End on Cookham High Street.

Tel: 01628 471885
stanleypencer.org.uk. Exhibition open daily including weekends (10.30am to 5.30pm)

Image: Magnolias, 1938 On loan to the gallery by a private collector. Courtesy of Sotheby's © The Estate of Stanley Spencer. All Rights Reserved, 2016 / Bridgeman Images.

Alexander Jolliffe Upholstery

Website: www.ajurc.com

Email: alex.djolliffe@gmail.com

Mobile: 0795 101 2222



No. 25

**Specialists for
Mother of the
Bride/Groom,
Ascot, special
occasion and
cruise wear.
Accessories
too...**

25 The Parade, Bourne End,
Bucks SL8 5SB

Tel: 01628 528877

Open Monday to Saturday
9.30am to 5pm

See website for Sunday Open Days

www.No25ofBourneEnd.co.uk

Solicitors Buchanans

**Divorce | Conveyancing | Commercial | Employment |
Wills | Probate | Litigation | Elderly Client**

Buchanans Solicitors can assist with all the above and more.

Buchanans Solicitors is a friendly, modern law firm which offers a broad range of services and aims to deliver clear advice promptly and cost effectively.

Call us for a free, no obligations chat on 01628 810 707

Swains House, Swains Lane, Flackwell Heath, Buckinghamshire HP10 9BN
office@buchanansonline.com
www.buchanansonline.com



Authorised and regulated by the Solicitors Regulation Authority (No. 00469188)

**Matrimonial
issues?**

Please contact
our experienced
family solicitor
Nathalie Wespieser
in confidence

Road Safety – Sheepridge Lane

It seems to be Groundhog Day when we keep talking about the installation of the vehicle activated sign in Sheepridge Lane. While it is disappointing that it hasn't arrived yet, it is currently being manufactured and the latest date we have for installation is the end of May. It should be in place when you receive the next edition of *Target*.

We were delighted that Bucks County Council has improved the signage around the bends and there is a new surface on the actual bends which is meant to provide slightly more grip. We really hope all these measures will reduce the number of accidents. Sadly all these improvements won't help the motorists who still drive too fast on Sheepridge Lane and end up parking their cars in the ditch.

Tree Dedication to long serving councillors and retired clerk

We were delighted to welcome back retired councillors Dallas Banfield, Barbara Wallis, Ruby Taylor and retired clerk Gloria Barclay to the Pavilion in March.

The council was also pleased to welcome Mrs Christine Innocent who is the widow of long-serving councillor Clive Innocent who sadly passed away in 2014.

Five new trees were planted around Pavilion Recreation Ground and each one was dedicated to an individual councillor and the retired clerk.

This was to mark their long-standing service to Little Marlow Parish Council and the local community. Their combined service to Little Marlow parish adds up to over 100 years!

It was great to welcome the Maidenhead Advertiser who reported on the occasion. We took pictures of each person with their respective tree and then had a lovely afternoon tea to celebrate.



Retired councillors and retired clerk Gloria Barclay

Allotments

It has been a busy time on the allotments in Chapman Lane. New plot holders have taken possession of their allotments and there is plenty of evidence of digging, planting and general tidying up.

Thanks to the parish council who arranged for a skip, the accumulated rubbish has been cleared. We are grateful to the allotment holders who turned up on March 19 to help.

The site allocated for a community orchard is once again clear and can be planted with donated (small stock) fruit trees in the Autumn although given the weather it might not be too late to do so this Spring.

Some of the allotments are rather neglected and owners will be contacted to check that they are well and if they will be cultivating their plots so that we can maintain the site to a high standard.

Path widths and allotment boundaries will be checked this year. There is a steady demand now and one or two plots are still available at the time of writing.

Abbotsbrook Hall

There has been quite a lot of activity at Abbotsbrook Hall to improve the facilities there.

In the last few weeks, there has been the installation of a new boiler for the heating, repairs and levelling of the car park and the installation of a new pull-down screen for hirers to use for any presentations.

The council is also improving the lighting in the hall and we hope this will be done in time for our Annual Parish Meeting on May 27.

INVITATION TO ALL PARISHIONERS!

If you received your *Target* on Friday May 27 you are in time to come and discover what the Parish Council does for your community!

Annual Parish Council Meeting

Tonight (May 27)

Abbotsbrook Hall at 8pm

Presentations from the chairman and other community organisations.

Wine and Nibbles served



Council Meetings:

June 28 at 8pm and July 26 at 8pm

At the Pavilion, Church Road, Little Marlow, Bucks SL7 3RS. Tel: 01628 890301

Email: clerk@littlemarlowparishcouncil.org.uk



Care of the Mind

At Phoenix, we believe it is important that mental health problems are treated speedily. With over 30 therapists, from psychiatrists to psychologists and nurses, to our hypnotherapist and counsellors, we are able to address any problem.

Our fully qualified practitioners only practise evidence-based therapies and we work in association with the inpatient and day hospital services of Cardinal Clinic, so if you are admitted into hospital, you will be assured of continuity of care.

Based in Wooburn Green, many of our therapists also work in other areas and some treatments, including nursing care, can be delivered in your home. Our friendly staff are here to guide you and to make your recovery as stress-free as possible.

Call 0870 162 0673, email enquiries@phoenix-mhs.com or visit www.phoenix-mhs.com to find out how we can help.


CARDINAL CLINIC
in association with the inpatient and day hospital services of Cardinal Clinic


Phoenix
Mental Health Services

Suffolk House, 54-55 The Green, Wooburn Green, High Wycombe HP10 0EU Tel 0870 162 0673 www.phoenix-mhs.com



Margaret Seaman

Say the name Margaret Seaman to any member of Forum Players, to anyone who has enjoyed one of their shows at the community centre and, more recently, to those attending the monthly luncheon club and the lady pictured on the right here will instantly come to mind. And she is likely to be laughing.

When Margaret died in early April she was the last remaining founder member of Bourne End's amateur dramatic group and, without a doubt, one of their most dedicated supporters. So let her fellow Forum Players remember the Margaret they knew.

When Jill Hyde joined Forum Players she soon realised that that

Margaret was the lynchpin having been their secretary since the group started in 1968. Jill joined the committee and eventually became chairman with Margaret guiding her through her first term of office.

Margaret the actress is remembered by Jill. "I saw Margaret appear in many shows from mysteries and comedies to pantomimes, music hall, variety shows and workshop productions. "We appeared together in a one act play called *Star Dusters* about a group of theatre cleaners who pretend to be actresses. What fun we had rehearsing this farcical comedy. She had a wonderful sense of humour and a great sense of comedic timing.

"Later we co-directed the comedy *Wedding of the Year* when I learned much from Margaret about directing. It was my privilege to direct her as Letitia Blacklock in the 1990 production of *A Murder Is Announced* when she was revealed as the murderer."

Brenda Phelps remembers Margaret being here, there and everywhere. On stage of course, but also helping backstage, front of house, in the kitchen, at jumble sales, summer fete and quiz. She was always ready and willing to help or take part in everything the club did.

"I shall remember her on stage at the last night of the panto and coming in, bright and breezy, the next morning, pinny on, rubber gloves at the ready, to tidy up after the show party, smiling and cheerful, ready to tackle the job in hand."

Daughter Emily remembers that Margaret played her Aunt Bee in Forum's production of *The Wizard of Oz*.

"Margaret was always right on cue in all our scenes and that really helped. She was so much a part of Forum."

Rick Accastello shared the stage with Margaret in the chorus for various pantomimes. He remembers: "I was chairman of Forum Players for six years and I remember feeling a bit lost, I used to visit her regularly for advice, over a cup of tea and a biscuit. In front of this seasoned thespian I felt a bit shy – like any Prime Minister must feel when meeting the Queen – but she was always patient and I treasured her comments then and still do now."

Leigh Robinson remembers that Margaret was one of the first people she spoke to back in 1991. Now Forum's secretary Leigh treasures the minutes from the group's first AGM held at Wooburn Church hall in April 1968 and hand written by Margaret.

Leigh says "ALL Margaret's minutes were meticulously hand written. I was one of the witches with Margaret in *The Farndale Avenue's Macbeth*. It was such fun and Margaret helped me when I was struggling to remember my lines."

Wendy Keeble recalls being welcomed by Margaret when she joined the amateur dramatic group in 1973. Wendy's memories are of Margaret in comedy and dramatic roles then, in later years, as a stalwart of the panto chorus.

Away from the drama Sally Williams, pictured on the left sharing a laugh with Margaret, drove her to the luncheon club regularly and she said: "Margaret was always interesting and interested, kind and cheerful. I shall miss her company."

RIP



HALL PLACE
VETERINARY CENTRE

61-63 The Parade
Bourne End
Bucks, SL8 5SB
01628 525274
www.hallplaceveterinarycentre.co.uk

<p>94 Little Marlow Road Marlow Buckinghamshire SL7 1HG 01628 483062</p>	<p>Lee Farm, Lee Lane Pinkneys Green Berkshire SL6 6PE 01628 622086</p>	<p>1A Dodds Corner Stokenchurch Buckinghamshire HP14 3RZ 01494 485855</p>
--	---	---

SMALL ANIMAL CONSULTATIONS BY APPOINTMENT
24 Hour Emergency - 01628 622086



PT CARPENTRY
and Household Services
Design • Repair • Rebuild - just ask
Paul Thomas


Mobile : 07905 221991 E mail : ptcarpentry@live.co.uk
Carpentry - Plumbing - Plastering - Decorating - Gardening
(sub contract electrical services)

Carpentry design and repairs, bespoke furniture made to order, erecting sheds, stables, fencing, trellis, garden gates, assembling flat pack furniture, hanging doors, changing locks & door furniture, fitting security locks to doors and windows, boarding out lofts & installing loft ladders, plumbing in sinks, installing washing machines, kitchen and bathroom fitting, changing taps, tiling, grouting, putting up shelves, pictures, mirrors & curtain poles, clearing and repairing gutters, landscaping, general garden tidying, pressure washing patios, project management.....

the list goes on and on!.....

"To do the jobs that you don't have time to do !"
Mobile : 07905 221991 E mail : ptcarpentry@live.co.uk

Bourne End Electrical



All your electrical needs catered for

Quick and efficient service

Test & Certification
New Fuse Boards
Upgrades & Repairs
Interior & Exterior wiring
Outside Security Lights
Switches & Outlets

Ring Stephen on
01628 850968
07790 546975

You can't have everything - where would you put it?

JAMIE'S TOURS

Picking up at a location near you!

Seaside days out – let Jamie do the driving!

BOURNEMOUTH

Wednesday 29 June

Relax on an endless beach or go up on the balloon

fabulous views in every direction

£21 adults £16 children

SOUTHEND ON SEA

Wednesday 6 July

A favourite with so much to do and enjoy

Superb shopping centre

And fish and chips for lunch?

£20.52 adult £16.25 children

Visit the home of William Shakespeare and enjoy a day out with a difference

STRATFORD UPON AVON

Wednesday 24 August

Board the Countess of Evesham for a three hour cruise with lunch

£46.50 per person

Phone or email Jamie with your details to go on the mailing list for all trips and holidays

www.jamiestours.com

Ring 01494 416500 Mob 07714583215 or email jamiefye2@gmail.com



Wooden you like to learn how?

Wooburn Craft School believes that everybody needs to have a creative outlet and take pride in the beautiful pieces they make.

Their day artistic and craft adventures allow you to challenge yourself to higher levels of perfection. And most of all you will have fun!

One of their popular series of classes is 'woodworking' taught by Phil Lyons of Lyon's Restoration. He offers both a beginners and an intermediate course so that anyone with no woodworking experience can pick up these skills.

The beginners course starts with an overview of common furniture woods and their qualities as well as the basic hand tools and how to use and sharpen them. Students are introduced to basic woodworking techniques while making a beautiful wooden box in their choice of timber (see picture). Finally, they will try out some finishing techniques before choosing the one for their box.

Intermediate courses build on skills learned in the first course and are suitable for students with basic woodworking experience. Students are taken



LETTER TO TARGET

Dear Target

As the father of young children, I've been pleased to see the improvements in the playgrounds in Flackwell Heath and Wooburn Green over the last 12 months. However, I have a question for the readers of *Target*. Why do they take away some of the existing play equipment when they install new equipment? It can't be a question of space, as there is plenty of space left on the tarmac areas, so the children could have enjoyed both the 'new' and the 'old' equipment. Hoping someone can solve this puzzle for me.

Phil Dunn

Groome Court, Blind Lane, Flackwell Heath,



Brittons Solicitors
28 The Parade
Bourne End
Bucks SL8 5SY

Friendly, helpful, professional,
efficient and cost effective legal
service.

We look after you.

Telephone: 01628 533350
Fax: 01628 533119
Email: lex@brittonsol.co.uk

The CACI Pod



- * Facial Lifting * Lines/Wrinkles
- * Eye Bags * Microdermabrasion
- * Skin Hydration * Neck Treatments
- * Cellulite, Stretch Mark Treatments
- * Jowl lift

Our CACI Ultimate lifting treatment is both preventative and rejuvenating

CACI's celebrity friends include
Jennifer Aniston, Courteney Cox & Jennifer Lopez

thecacipod@yahoo.com Tel/Text 07901 276977
Magnolia House, Bourne End, Bucks SL8 5TZ Visit: www.caci-international.co.uk for more information



V J CLEANING

**ALL HOUSES & BUSINESS
PREMISES CLEANED
TO THE HIGHEST STANDARD**

**REGULAR WEEKLY CLEANS
OR ONE-OFF DEEP CLEANS.
WE CAN WORK HOURS TO SUIT YOU,
HOWEVER BIG OR SMALL.**

**FOR A FREE, NO OBLIGATION,
QUOTATION**

**CALL US NOW ON
07869 127508 OR
01628 527891**

bourne end dental



Our exceptional levels of expertise and our team approach to caring means Bourne End Dental has been at the forefront of general practice for more than 20 years.

- ❖ Considerate dentistry in a caring environment
- ❖ Superb clinicians with a family focus
- ❖ Early morning & Saturday appointments
- ❖ Specialists in gum therapy, root canal treatment & braces
- ❖ Cosmetic dentistry & whitening
- ❖ Dental implants & facial aesthetics

**Protecting, renewing and enhancing the lifelong
dental care of our patients**

01628 523 353

Station Road, Bourne End, Bucks, SL8 5QP

www.bourneendental.co.uk



Why I'm running... by Laura Manning

Challenging myself to get fit meant putting the Brighton Marathon on Sunday 17 April into my diary and getting on with the running. Then I found out that my old school friend's son, George, was terribly ill and had been diagnosed with blood cancer. He had a rare form of leukaemia affecting fewer than 100 children in the country.

Suddenly I had a real challenge – to raise money for George – and make sure I got to the finishing line. So on with the running.

My time of 5hr 18mins was hardly a Paula Radcliffe pace, but the £850 (money raised to date and still counting) was the important factor.

Thanks to so many people who sponsored me and to the community centre bar who raised £187 with a whip round as I ran. Thank you Tony Crossman and John Randall.

And it is great to know I wasn't the only one who had taken the challenge to help us 'fight for George'.

Other local clubs, pubs, social groups and many more are putting on events to raise money that will support the life-saving NHS care George is receiving.

Money goes towards physio, complementary medicine to aid healing and alleviate some of the chemotherapy symptoms and lots more to help make his life as full and happy as it can be.

I'll keep on running and will support events being held for George. There's information online and if you would like to know how to donate please contact me via email laura_manning@outlook.com or look online at Facebook or Twitter just search #fightforgeorge



Papal blessing for musician Jackie

For over 30 years Jackie Brown has provided the music in St Dunstan's Church for services, funerals and weddings. In recognition of this outstanding service Jackie received a blessing from Pope Francis and it was presented in church on her 95th birthday. Father Henry joined in to sing 'Happy Birthday' then made the day very special by handing over the Papal Blessing.

Jackie has lived in Bourne End for more than 50 years and, with husband Chris, they built a house on Hawk's Hill that was full of music.

Not one, but two, baby grand pianos had pride of place in their sitting room along with other musical instruments for musical evenings. Eventually coping in a big house on her own became too much of a burden so Jackie moved down to a flat in the village. Recently she has had some mobility problems, but she's delighted that St Dunstan's other musical group have been doing a wonderful job in her absence. Now she is on the road to recovery and mobility.






BY APPOINTMENT TO
H.M. QUEEN ELIZABETH II
HEATING & PLUMBING ENGINEERS
S.A. BOILER SERVICES

RS Boiler Services

Gas • Oil • Heating
Plumbing • Electrical

L.P.G. Specialists • Propane • Butane

TEL: MARLOW (01628) 483099 FAX: (01628) 476843

Reg No 62

Cutting Edge

All in one
hair
beauty
&
barber shop

**NEW
Tanning
Studio**

t. 01628 526070
www.cuttingedgejewell.com
49 The Green, Woodburn Green HP10 6DU

Every once in a while - take the scenic route

Birthday beacon

On Thursday April 21, Her Majesty the Queen celebrated her 90th birthday and Wooburn & Bourne End Parish Council lit the beacon in Sappers Field as part of a countrywide celebration.

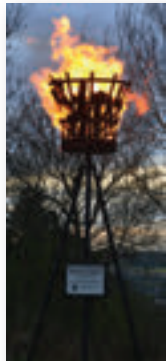
The Scouts and Guides were heavily involved with this event from the start and sold refreshments, cakes and sweets.

They did a short march around the field

and renewed their "Promise" before three cheers for the Queen were called and the beacon was lit by parish council

groundsmen, Shane and Roland. Although chilly, the weather stayed dry and the beacon didn't take long to get going. There was a very good turnout of both local residents and visitors and the momentous occasion led to an impromptu singalong of the National Anthem and Happy Birthday.

The parish council thanks their groundsmen for setting everything up, the Scouts and Guides for all their hard work and to Penny and Chris Baron for marshalling the traffic safely. *PHOTOS by Grace Laybourne*



First 90th birthday street party

Being the first is always good. That's what members of the Rotary Club of Bourne End and Cookham decided when planning their local celebration of HM the Queen's 90th birthday.

It also depended on finding a good location with excellent facilities when you planned to invite around 80 senior citizens to enjoy the party with you.

So on Thursday April 7 the tables were set, the bunting fluttered, the musicians were in tune and everything was ready in the community centre.

In they came to enjoy an indoor street party for a very special lady. Although many of them were the same age or even older than the lady they were celebrating.

Tea was served in vintage china and there was a constant supply poured from china teapots. It was all very fitting. Then the music took everyone back to the 1940s and 50s as they sang along to familiar tunes. There were flags to wave, crowns to wear and a full size picture of the royal couple.

Chairman David Buckland had written to Buckingham Palace to say that there would be an early celebration in Bourne End.

Responding with royal approval the Chief Clerk to The Queen said Her Majesty "has asked me to send her warm good wishes to all those organising and attending the party for a most memorable and enjoyable afternoon".

Your local Drycleaners at your service

Regular Discounts

Follow us on Facebook and Twitter, or sign up on our website for regular promotions and discounts.



BLUE DRAGON
LAUNDRY & DRY CLEANING



Regular discounts
www.bluedragondrycleaning.co.uk

Pop into your local Blue Dragon at 62 The Parade, Bourne End for a full range of drycleaning and domestic laundry services, including our *super speedy 2 hour and same day drycleaning options*. We can even take care of your repairs and alterations.

Branches also at: Beaconsfield, Gerrards Cross, Great Missenden and Ickenham.

<p>Your Bourne End Blue Dragon</p> <p>62 The Parade, Bourne End, Bucks. SL8 5SB Tel: 01628 522358</p>	<p>Opening Hours</p> <p>Monday - Friday: 8.00am to 5.30pm Saturday: 8.00am to 4.00pm Sunday: Closed</p>	<p>It pays to use Blue Dragon</p> <div style="display: flex; justify-content: space-around;">  Pure Care  </div>
--	--	--



BOURNE END JUNIOR SPORTS CLUB

NEWSLETTER

Founded in 1970 Bourne End Junior Sports Club is a registered charity run by volunteers to provide sport and recreation for children and young people, with many being highly qualified in their own sport. The New Road Sports Hall was built in 1982 and later extended to include a climbing wall and a club room. The multi-sport centre is used extensively by club members and members of the whole community. Please visit our website for more information www.bejsc.co.uk

VOLUNTEERS NEEDED

Bourne End Junior Sports Club has been providing generations of children and young adults with an avenue to explore sport and team leadership. We understand how busy modern life can be (we're human too!) but to continue this ethos, the Board of Trustees is looking for members of the local community to step forward and volunteer a small amount of their time to help a wide variety of areas of the club.

The search for new volunteers continues...

We are looking for individuals, parents/carers, grandparents and former club members to help with the running of sections and also with the management and direction of the club. If you think you have got what it takes in both enthusiasm and time then we would love to hear from you.

The areas we need most help in at the moment are: -

- Junior Badminton Leader (8 to 11 years) – 1hr per week term times
- Junior Committee Leader and new members
- Encouraging club members to “put something back into the club”
- Newsletter six times a year
- Associate Director looking at community integration & sponsorship – approx 1-2hrs per month.

Please take a look at our website (www.bejsc.co.uk), contact the office on 01628 528110 or email office@bejsc.co.uk to find out more.

YOUNG LEADERS

Two club members from the Junior Committee, Annabelle Maisey and Kathryn Hewett, have just completed the Young Leaders Course run by Action4Youth.

The scheme consists of two residential weekends: the first at Woodrow High House, in Amersham; the second at Hindleap Warren, in East Grinstead.

Young people learn and improve their leadership skills using a range of interactive tools and games.



Bourne End U9s played in the Marlow FC tournament at their stadium in Marlow in the plate competition. For the U9s it is the first year that tournaments are competitive and this is their second tournament. They were knocked out in the quarterfinals the week before on penalties. They practiced penalties at training and the result was that they beat Marlow in the final 2-1 on penalties. It was a great result. The U14s also lost in the final at the same tournament the day before. The photo shows the coach Gary Robbins with players Zach, Dylan, Ethan, Hayden, Liam and Louis. Also on the team but not pictured, Max and Jesse.

The course includes First Aid (British Red Cross Certificated Course), leadership (what is it, who leads?), club and personal safety, physical activities including sports and improvised games, creative ideas for use in clubs, communication skills, outdoor pursuits such as climbing, orienteering, assault courses and initiative tests.

BEJSC values this course for the opportunities and lasting skills it provides.

COMING EVENTS

Sportsfest – Saturday June 11.

The football section stage their big annual tournament in Wooburn Park with 150 teams taking part, including teams from Octville sur Mer. This is a great family fun day out so don't miss it – something for everyone!

BEJSC Annual Prizegiving – Friday June 17

at Hedsor Club, Hedsor Road, Bourne End. Our chance to recognise the achievements, progress and successes of club members from all sections as well as applauding the valuable contribution our volunteers make to the success of our club.

BEJSC Football Section Awards Evening

Sunday July 3 at Hedsor Social Club
With more than 120 members this is a great event to present to team members who have played so well during their busy season.

ALSO AT BEJSC...

Climbing Parties

Did you know you can book a climbing party in our sports hall? We cater for ages six and over; participants need no experience as they will be guided by our instructors. Please call 01628 528110 for details or e-mail office@bejsc.co.uk. Visit our website www.bejsc.co.uk for more information.

Classes for adults - Pilates class is on Thursday evenings from 6.30 to 7.30 pm. This gentle form of exercise is suitable for all ages. The following classes are also held at the Sports Hall - Monday fitball 9.30 to 10.30am; Tuesday 4 to 4:45pm stretch class. Please contact us for more details.

Treatment Room – for all your aches, pains, and injuries at The Sport Massage Clinic contact Wendy 01628 528226. Acupuncture available with Ray Siberini 07748 968762, www.acupuncture-balance.co.uk

**For information on clubs using our premises please contact the sports hall www.bejsc.co.uk
email: office@bejsc.co.uk. Chairman Matt Todd 01628 528110 Editor: Liz Hutton 01628 478168
Manager: Pete Sherwood 01628 528110 mobile 07710 132424
Sports Hall: (answerphone) 01628 528110**

Need an
Electrician?



N.I.C.E.I.C. Approved
Portable Appliance Testing
All electrical installations and
rewiring undertaken.



**SELLECK
ELECTRIC**

**ELECTRICAL CONTRACTORS
AND TESTING SPECIALISTS**

S.D. & R.A. Selleck
Electrical Installations Ltd.
3 The Green, Wooburn Green, High Wycombe,
Buckinghamshire, HP10 0EE

Tel: 01628 525278

Fax: 01628 810373

www.sellecks.co.uk

Wooburn Wheels

Service & Repairs, Children's Bikes, Adult Cycles,
Good Selection of Accessories.

Tools, Appliances & Accessories

COMPETITIVELY PRICED: Kettles, Irons,
Toasters, Hair Dryers, Coffee-Makers, Shavers,
Fryers, Lamps, Cable by the metre, Hoover Bags,
Plugs, Lampholders etc.

Peter Moys

Local handyman

01628 529714

No job too large or too small
Reasonable rates agreed prior to the work
peter.moys@yahoo.co.uk

Mobile: 07502 305 894

No VAT charges on labour
Fully insured | Free estimates

Established 1968

NEWELL & SON

20 Fennels Farm Road
Flackwell Heath



Tel: 01628 525329/524294

All Plumbing & Heating
Specialising in Bathrooms
Floor & Wall Tiling & Decorating

Reasonable Rates
No job too small

John M Wilks
Heating and Plumbing

EST 1971

Specialising in power flushing and
cleaning of all types of domestic
heating systems

Tel: 01628 527020

Mob: 07802 946209



www.buckspowerflush.co.uk
info@buckspowerflush.co.uk

Piano Lessons

A teacher with many years
experience. Lessons given in
Bourne End home setting,
High standards, good results
and good fun.
Young and old very welcome

ROBIN SHELDON

Call 01628 530174 or visit
www.piano-lessons-rts.co.uk

Community Minibus for Hire

12 Comfortable Seats
Reasonable Rates
Needs own driver

Contact Sue
at the Community Centre

01628 522604

Chiropody
Bourne End
Community Centre
Monday Mornings
07986

606814
For the treatment of all
Foot Ailments



TARGET READER SERVICE
Useful Telephone Numbers a

BOURNE END COMMUNITY CENTRE 01628 522604
www.bourneendbucks.com

POLICE 101 EMERGENCY 999
CRIMESTOPPERS 0800 555 111
www.thamesvalley.police.uk

POST OFFICES www.postoffice.co.uk

Last collection time:

Bourne End, Furlong Road	5.15pm	01628 520050
Flackwell Heath	4.45pm	01628 520524
Wooburn Green	5.00pm	01628 522939

DOCTORS' SURGERIES

Hawthornden Surgery, Wharf Lane, Bourne End SL8 5RX
Dr S H Buxton, Dr M Wolfen, Dr P Newman, Dr S Abbas, Dr M
Siddiqui. Branch Surgery – 47 Straight Bit, Flackwell Heath,
Bucks HP10 9NE

MESSAGES, VISITS & APPOINTMENTS 01628 522864

www.hawthorndensurgery.co.uk

HEALTH VISITORS' SERVICE 01628 482788

Cherrymead Surgery, Drs King, Fraser, Elias, Hettiarachchi and
Payne

Queensmead Road, Loudwater, High Wycombe HP10 9XA

MESSAGES, VISITS & APPOINTMENTS 01494 445150

www.cherrymeadsurgery.co.uk

Pound House Surgery, 8 The Green, Wooburn Green HP10

Dr Elizabeth Bailey, Dr Raj Thakkar, Dr Shareen Hallas,

Dr Emma Southworth, Dr Mia Murray

Also at: Orchard Surgery, Station Road, Bourne End SL8 5QE

MESSAGES, VISITS & APPOINTMENTS 01628 530 997

www.poundhousepractice.co.uk

NHS 111 or www.nhsdirect.nhs.uk

HOSPITALS

Amersham Hospital, Whielden Street, Amersham,
Bucks HP7 0JD

01494 434411

Wycombe Hospital, Queen Alexandra Road, High Wycombe,
Bucks HP11 2TT

01494 526161

Stoke Mandeville Hospital, Mandeville Road, Aylesbury, Bucks
HP21 8AL www.buckshealthcare.nhs.uk

01296 315000

St Mark's Hospital, 112 St Mark's Road,
Maidenhead SL6 6DU

01628 632012

Wexham Park Hospital, Wexham Street, Slough SL2 4HL

www.heatherwoodandwexham.nhs.uk 01753 633000

BOURNE END DENTAL PRACTICE

Station Road, Bourne End, SL8 5QF 01628 523353

Mr G Goodall, Mr S Rees, Mr A Chandrapal, Mr A Powell

Mon-Thurs 8am - 5pm. Fri 8am - 4pm. Sat 9am - 2pm

www.bourneenddental.co.uk

ASH TREE HOUSE DENTAL SURGERY

6 The Green, Wooburn Green HP10 0EE 01628 532932

CALL TARGET ADVERT

CE
nd websites

BROOKHOUSE VETERINARY SURGERY
61 - 63 The Parade, Bourne End SL8 5SB
www.brookhousevet.co.uk 01628 525274

DAY CENTRE, Wakeman Road, Bourne End SL8 5SX
01628 527024

WYE VALLEY VOLUNTEERS, Portacabin, Wakeman Road
Bourne End SL8 5SX 01628 521027

BOURNE END LIBRARY
Wakeman Road, Bourne End SL8 5SX 0845 2303232
Sunday & Monday closed. Open from 9.30am, half day on
Wednesday. Open Saturday until 2pm. Late Night on Tuesday
www.buckscc.gov.uk/bcc/libraries/branches/bourne_end.page

British Rail Passenger Information 08457 484950
Bourne End Station, Station Road, Bourne End SL8 5QH
www.nationalrail.co.uk

Carousel Buses www.carouselbuses.com 01494 533436
Arriva Bus Company www.arrivabus.co.uk 0844 8004411

North Thames Gas Emergency (Slough) 0800 111999
Southern Electricity Emergencies 08000 727282
Thames Water Supply Emergencies 0800 714614

THE SAMARITANS
(free number even from mobiles. Texts also accepted) 116123
Katharine House, 17 Uxbridge Road, Slough, Berks SL1 1SN

CITIZENS ADVICE BUREAU 01628 621006

BUCKS COUNTY COUNCIL, County Hall, Walton Street,
Aylesbury HP20 1UA www.buckscc.gov.uk 0845 3708090
Highways (Transport for Bucks) 0845 2302882
Citizens Advice Consumer Helpline 0845 4040506

WYCOMBE DISTRICT COUNCIL
Queen Victoria Road, High Wycombe HP11 1BB
www.wycombe.gov.uk 01494 461000

SCHOOLS
Claytons County Combined, Wendover Road, BE, SL8 5NS
www.claytonprimary.ik.org 01628 525277
Little Marlow School, School Lane, Little Marlow SL7 3SA
www.littlemarlow.bucks.sch.uk 01628 473316
St Paul's School, Stratford Drive, Wooburn Green HP10 0QH
www.st-pauls.bucks.sch.uk 01628 521553
The Meadows School, School Road, Wooburn Green
HP10 0HF www.themeadows.ik.org 01628 521634
Wye Valley School, New Road, Bourne End SL8 5BW
www.wyevalley.bucks.sch.uk 01628 819022

WOOBURN & BOURNE END PARISH COUNCIL
Council Offices, Town Lane, Wooburn Green HP10 0PS
www.wooburnparish.gov.uk 01628 522827

LITTLE MARLOW PARISH COUNCIL
Community Office, The Pavilion, Church Road, Little Marlow
SL7 3RS
www.littlemarlowparishcouncil.org.uk 01628 890301

SING ON 01628 525415

travel counsellors 

Tailormade trips
BEACH HOLIDAYS
honeymoons
city breaks



As **your local Travel Counsellor** with years experience in the travel industry, I can tailor-make your perfect holiday. Available at a time to suit you, I will provide an unrivalled level of personal service, taking care of all your travel needs down to the finest detail.

Everything you book with Travel Counsellors is financially protected including hotels, low cost airlines and car rental at no extra cost.

SUE CLARIDGE Travel Counsellor

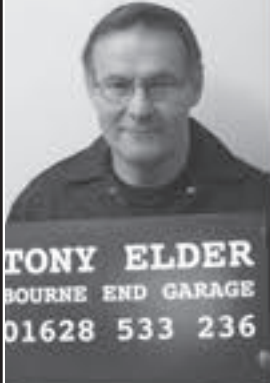
T 01628 876080
E sue.claridge@travelcounsellors.com
W www.travelcounsellors.co.uk/sue.claridge

Travel Counsellors ensures complete financial protection on every booking




The Kings Head
Church Road, Little Marlow
Tel: 01628 484407

We serve a wide variety of hot and cold food every lunchtime and evening and all day Sunday from 12 noon to 7pm, plus a good selection of cask conditioned ales and fine wines. In the wintertime there are log fires and in summer a large garden. The Pavilion function room caters for any type of party including conferences for up to 50 people. Please telephone 01628 484407 for details.



DO YOU KNOW THIS MAN?

This is the face of Tony Elder



Tony Elder has been synonymous with car care in Bourne End for over 40 years and he has taken over Bourne End Garage, where, he says "No job is too much trouble".

Call in for a chat and speak directly to the person who will be undertaking the work.

BOURNE END GARAGE
1 OAKFIELD ROAD, BOURNE END
TEL: 01628 533 236

SERVICING • EXHAUSTS • TYRES • WELDING • MOT'S ARRANGED
LOCAL COLLECTION BY ARRANGEMENT

Joe Griffin TV AERIAL SERVICES

- Ⓞ Poor Reception Solved - Aerials repaired & supplied
- Ⓞ TVs - Hung on your wall for you. Also supplied & tuned
- Ⓞ Extra TV Points - For aerial and Sky (In HD!)
- Ⓞ Sky TV - Also Foreign Language TV

Call Marlow
01628 439115

A part of  OXFORD AERIALS

STEVE HOBSON Plumbing & Heating

Boilers, Gas Fires, Cookers,
Servicing, Installations and
Repairs,
Gas Safety Landlord Certificates,
Unvented Systems & Plumbing,
Vaillant approved installer

Tel: 01494 524357
Mobile: 07762 082984



To advertise in *Target*
call **01628 525415**
or email

advertising@targetmagazine.org.uk

BS GARDEN SERVICES



- *Hedge Cutting
 - *Fencing
 - *Turfing
 - * Garden Clearance
 - *Driveway & Patio Cleaning
- Call 07966205145
barrysteptoe@yahoo.co.uk

Pilates Matwork Classes

Beginners/Mixed Level and Intermediate
One to one by appointment

Venues - Abbotsbrook Hall
Upper Thames Sailing Club
Little Marlow Pavilion

St Dunstan's Church Hall - Bourne End
Call Sally on 0787 625 1967

DAVID HARRIS Electrician

FOR ALL YOUR DOMESTIC WIRING
Qualified & Experienced with
Electricity Board - Part P
TELEPHONE: 01628 810349

TO HIRE ABBOTSBROOK HALL

For Wedding Receptions
Meetings, Dances, etc.

APPLY TO
MRS C SAMUELS
2 RED COTTAGES

WELL END
or telephone
01628 528936

AMPLE CAR PARKING SPACE

The Phone Man

Need a new
telephone
socket for
your
computer or
SKY box?

Need one moved or repaired? Broadband signal
problems? Internal wiring problems? BT not
interested or you don't want to pay their very high
charges? Call John on 07709 895252 or 01494
711744 for free advice, fast service, and quality
work. All work and materials guaranteed.

john.summerbell@btinternet.com



Kingfisher
Building Consultancy

Thinking of extending?

We offer:

- Full architectural design service
- Planning and building regs applications
- Extension, loft conversion & remodelling
- Party Wall surveyor services
- Building and development consultancy

For professional, friendly advice, please
phone Bourne End (01628) 526998



FOR HIRE
St Mark's Church Hall
Station Road
Bourne End SL8 5QE
Enquiries to: Michael Payne
077430 37938

TRYING TO JUGGLE YOUR CHILDCARE?

Cookham Montessori School
For children aged 2-5 years

We are extending our hours to offer a
flexible package for busy mums!

Mix & match your daily requirements:

- Session start times: choose from 8.30am, 9.00am, 9.30am or 12.30pm
- Session finish times: choose from 12.30pm, 1.30pm, or 3.00pm

Funding available for 3 & 4 year olds

Term Time Only

Ofsted Validated

Phone 01628 529414



www.cookhammontessori.com

EMMETT CONSTRUCTION DEVELOPMENTS LTD

Extensions – Conversions

Refurbishments – New Buildings

Private & Commercial Work Undertaken

Tel/Fax 01628 524500

e-mail: emmett123@btconnect.com

Gallery moves across the road

It was all down to the planning permission. When Gillian Cumming heard that the owners had received permission to convert her building into apartments it meant finding new premises for her gallery and framing business.

"It was one of those moments that concentrate the mind," she admitted, "so I started looking at what was available locally."

As was mentioned in the last issue of *Target* there was quite a lot of enthusiasm for opening a business in Bourne End, but Gillian (pictured below) needed premises that would allow her to display both new artworks, including paintings, sculptures and ceramics, as well as providing space for the very important bespoke framing side of her business.

"We knew that we had a new collection of Spring frames to go with our wide collection of mouldings from simple to modern and stylish, ornate and decorative to bold and beautiful with all our usual services such as hand painting and colour matching to let the picture shine through," Gillian explained.

Now the ByGillian Gallery has reopened and Gillian is delighted. It is just across the road from where she used to be and it is part of Furlong Road.

"There were difficulties, and finding space that would enable me to combine what we have to offer proved more difficult than I thought," Gillian admitted. It has been a lot of work, but she is just delighted that she has reopened and the new gallery space has its own parking spaces right outside the door.

"That's a huge plus and we look forward to welcoming both new customers and our lovely group of regulars who just want to see the work of new artists in a familiar location."

So call into the ByGillian Gallery at its new premises at 12 Furlong Road where you'll be assured of a warm welcome. Their telephone number has remained the same at 01628 527720 and their website is www.bygillian.com



Virgin EXPERIENCE DAYS

www.virginexperiencedays.co.uk

or call 0844 504 0844

DRIVING • FOOD & DRINK • AFTERNOON TEA • SPA & BEAUTY • ADVENTURE
FLYING • DAYS OUT • SHORT BREAKS • WATERSPORTS • EVENTS • UNIQUE GIFTS



also the home of...



Acorne Plc, Stamford House, Boston Drive, Bourne End, SL8 5YS

Women's breakfast

Everyone is welcome to the Women's Breakfast at St Peters Church, Loudwater on Saturday June 18 from 8.30am to 10am.

The speaker is Nichola Neal of Revelation Life Christian Charity. She is working with families in slums in Kampala. For more information, contact Linda on 07503212815

CHARITY YOGA DAY

Saturday June 18 from 10.30am to 12.30pm

Cost: £20 minimum donation

Venue: St Dunstons Church Hall, Bourne End

All proceeds will be split between Pancreatic Cancer Research Fund and Iain Rennie Hospice at home.

Or come for tea and cakes at 12.35pm.

Places limited so book your place - call Linda on 01628 521510/07503212815 or email

jjolliffe6@gmail.com

Reaching out to Gambia by Henry Hulme

As part of St Nicholas outreach programme, in my capacity as treasurer of the church, I was able to visit Mbollet-ba in the Gambia.

St Nicholas, Hedsor and Salusbury Primary School based in North London support a small village called Mbollet-ba.

Mbollet-ba is about an hour's journey from the capital Banjul, and has a population of 1,000.

The village has a subsistence economy growing vegetables and rearing goats and cows. Like all of the Gambia it is very poor. The average income per person is £360 compared to £31,000 in the UK, and the average life expectancy is 61 compared to 81 in the UK.

I got involved with The Salusbury Mbollet Partnership after my daughter Sophie, together with her daughter Eva, stayed at the village two years ago. She described how poor the village was, but how friendly and welcoming the villagers were to their visitors.

This February, I went in a group of six adults, five children and two A level students. The adults comprised four parents whose children were at Salusbury, the school nurse, and me.

We were made to feel very welcome and stayed in local village houses which, though comfortable, had only basic sanitary arrangements.

We enjoyed the food and every evening we would all share a supper with some of the villagers. We also took part in a welcoming dance, although our attempts at African dancing were distinctly amateur.

We all had tasks in the village. I set up the micro finance system, the nurse worked in the clinic, others helped teaching and decorating the outside of the school buildings.

The group brought over medical and dental supplies, sports gear and school stuff.

St Nicholas Church was able to make a substantial financial contribution towards replacing the school's collapsed water tower, monitoring and providing 10 micro loans to finance such things as fencing a cassava garden, rearing poultry, buying a sewing machine and replacing a generator used to downstream football matches on a commercial basis etc.

Contributions also funded a two year training for Assan, a medical nurse. He has now completed his first year and will be fully qualified by December 2016.

Salusbury School Partnership also bought material to build a womens' market, they supplied lots of sports gear (sourced thru Kit Aid) and masses of school stuff.

A level students bought four cycles for children living far away. They also financed teacher training, an adult men's training day and some school repairs.

Future plans include sponsoring poor children at school, completing the building of staff and pupil toilets, supplying additional classroom furniture, building trainee teachers accommodation and restoring the school garden well. The group visits the village every six months, and anyone who would like to participate in this charitable project can contact me: henry.hulme@btinternet.com



Left, a family at the medical centre, above left the women's market and above, the village water tower

ashtonopticians
OPTOMETRISTS

Your independent practice in Flackwell Heath for value, style and personal service

- NHS and Private Eye Examinations
- Digital imaging and OCT scanning
- Behavioural Optometry & Vision Therapy
- Wide range of NHS, budget and top designer spectacles
- Contact Lenses
- Prescription and non prescription sunglasses
- Specialist sports eyewear
- All types of contact lenses fitted and supplied

01628 530420 www.ashtonopticians.co.uk
Mark Ashton BSc(Hons), MCOptom, Ros Ashton BSc(Hons), MCOptom,
1 Acorn House, Straight Bit, Flackwell Heath

JACQUI JONES
PERSONAL TRAINING

Fed Up Being Overweight & Unfit?

Want To Kick Start Or Improve Your Fitness Regime?

I Can Help You!

Fully Qualified Personal Trainer

For A Free Consultation
07595223314

www.jacquijonespersonalfitness.co.uk
jacqui@jacquijonespersonalfitness.co.uk
Train at Home or at Private Gym
In Flackwell Heath

fairfield framing

Bespoke picture framers
in Bourne End

☎ 01628 529646
📱 07976 883856

debparrish@aol.com
Established since 1998

Ridgeway Property Services

- * Boilers * Heating * Plumbing
- * Natural gas and LPG servicing, installations and breakdowns
- * Toilets, hot water cylinders, tanks, overflows, blocked drains, guttering, waste and drain pipes

Gas Safe 27329

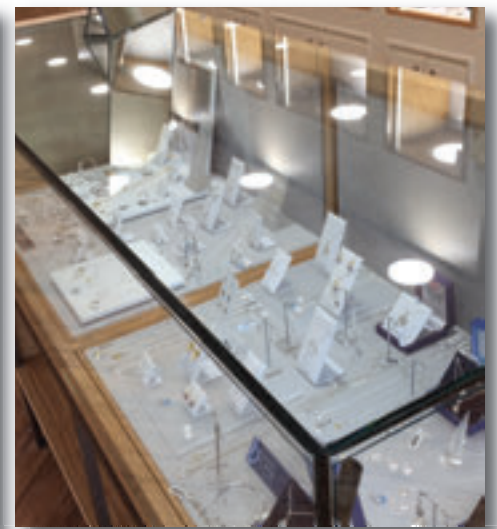
Tel Ian: 07973 289186
ijackson903@icloud.com

www.ijplumbingandheating.co.uk

TECS 19 Ltd
Pest Control

- Wasps • Insects
- Rodents • Foxes
- Rabbits • Birds

Please Call
Tel: 07979 808809
tecs19ltd@gmail.com



Stylish new premises for Bourne End Jewellers

Bourne End Jewellers is bucking the worrying trend of shops closing down in Bourne End by opening up in bigger premises on The Parade.

Their stylish new shop opened mid-May and a steady flow of visitors on the opening day was hopefully a sign that they will thrive in their new location.

Bourne End Jewellers has been in the village for more than 30 years run by the Bull family, who have now extended their business to offer a much wider range of services and brands.

The business is a real family affair as Richard and Julie Bull, who started the company together, have their daughters, Kate, Jessica and Lizzy, working alongside them.

As well as smart new display cabinets showing existing and new brands they have a dedicated consultation area in the new shop offering privacy for clients looking for something special or discussing bespoke jewellery designs.

Kate told *Target*: "The general consensus on opening day seemed to be that people thought it looked really nice and was a big improvement on our smaller shop.

"The lighting got lots of good comments and people said that the new shop is very bright and spacious and they really liked the ranges of jewellery that we are offering now.

"We were also really touched by the number of customers, old and new, who came to see us as well as people from local businesses who came along to say hi and support us."

Be treated like a Royal for the Day Competition

BOURNE END MOTOR COMPANY As part of the Queen's 90th Birthday Celebrations, Bourne End Motor Company and Cliveden Hotel have joined together to offer you the chance to be "Treated like a Royal for the Day".

This prize is for two people to be collected from home* in a Rolls Royce and driven to the fantastic world renowned hotel where Queen Victoria has stayed on numerous occasions.

CLIVEDEN

Once there you will enjoy a 45 minute boat ride on one of the hotels classic launches, along Cliveden Reach, one of the most tranquil stretches on The River Thames. This will be followed by Cliveden's new and unique Cliveden Heritage tea whilst being given some history about the house. After your relaxing afternoon you will then be collected at a pre-arranged time and driven home* in the Rolls Royce.

Entry forms can be collected from our showroom or downloaded directly from our website www.bemc.co.uk and posted or hand delivered back to us at Bourne End Motor Co, Wakeman Rd, Bourne End, SL8 5SX. (Email entries will not be accepted). Closing date for all entries is the Queen's official birthday on Saturday 11th June.

Good Luck



All together now...

Around 80 ladies from various South Buckinghamshire WIs walked together on Friday April 29 to join in with the National Associated Country Women of The World (ACWW) "Women Walk the World" event put on by ACWW county reps Tracey Girdler-Rogers and Hilary Forbes.

The two Bourne End WIs hosted the event providing a fabulous lunch for all at Bourne End Community Centre. The day included a treasure hunt which was a great success, taking in the village of Bourne End on a lovely spring morning. The photo above has been cleverly photoshopped to include as many participants as possible!

The retirement savings you didn't know you had

Do you have retirement plans you hope to achieve? Or parents whose retirement income is not enough? Have you any home improvements to make or family members you want to support financially? Perhaps a dream destination to visit?

In 2013 more than 19,000 homeowners accessed an average of £60,000 of their property value to spend as needed while remaining the full owner of their home and making no monthly repayments.

This is a Lifetime mortgage. To understand the features and risks please ask for an illustration.

A Lifetime mortgage is a form of equity release which enables homeowners aged 55 and over to access their property wealth. Equity release can affect your entitlement to state benefits and grants.

A typical advice fee of £1,295 is only payable upon completion of a plan. Equity release may affect the size of your estate over time.

Since 2010 over 19,000 people have been forced to sign a "Pay when you die" contract with local authorities for their care - on average £75,000 per person. *Our equity release provides specialist legal advice to protect you and your estate.

Source 1: The Telegraph, 2014 *Source LV

Your home
can play an
important role
in helping you
achieve your
plans



Features:

- Release equity tax free from your property
- Retain 100% home ownership
- Option to guarantee an inheritance
- No monthly payments unless chosen
- Never owe more than the value of your home

Other uses for equity release:

- Supplement your income
- Boost your business
- Pay off a mortgage on any property

ATTFIELD JAMES Financial Management Ltd
Swan House, 4-6 Market Street, Maidenhead, Berkshire SL6 8AB
Telephone 01628 623600 Fax 01628 773770
email: abattfield@aol.com
www.attfieldjamesfinancialmanagement.co.uk

Elodie's prizewinning mug

Elodie Sykes, aged nine, admitted that seeing her design on one of the mugs was "very special". Her design won the prize and was printed on mugs given to visitors from Octeville sur Mer when they arrived in Bourne End on Thursday May 12. Earlier that day Elodie had her first glimpse of the mug at her school assembly when Sandrine Hammerlindl from Bourne End Twinning Association arrived to tell the children at Claytons that Elodie's design would go back to France with the twinning visitors.



Entrants were challenged to show their favourite place in Bourne End and it was Elodie's carefully painted picture of the Bourne End sign on The Parade that impressed the panel of judges. "It was lovely" David Davis said, "and we all knew it would look good on a mug. Well done Elodie." The association worked with Cards and Gifts on The Parade to make the mug as a souvenir of the twinning visit and to put them on sale in the shop. They're £4.95 with all the proceeds going to the twinning association. They make ideal gifts for visitors or to send to a friend who had moved away. Elodie is pictured left with her winning design and right with French visitors Jean-Pierre and Claudine Marie.

RNLI awards



Their rescheduled AGM was tinged with sadness as RNLI members realised that the vibrant Margaret Hourigan was no longer a major force for their fund raising. Her sudden death had come as a huge shock and sympathy was extended to her family. Tony Crowther proposed a round of applause for Margaret and members responded.

Honorary Life Governor awards were presented to Diana and John Spokes (above) along with Certificate of Thanks to many branch members.

Pictured below: l-r Kevin Hourigan for his daughter Victoria White, Wendy and Peter Osborn, Pauline Cooper and David Oswald.



Sapphire

Elegant dresses
For hire and sale:

- Evening
- Prom
- Parties
- Awards Dinners
- Cruises

For sale only:

- Mother of the Bride/Grooms
- Bridesmaids
- Special Occasion

Co-ordinating hats, hand-purses, shoes, bags and jewellery.

Open 9.30 am - 5.30 pm,
Monday - Saturday

Out of hours by appointment:
Sunday

11-13 Wycombe Lane, Woolturn Green, HP10 0HD
Tel: 01628 530 516 - www.sapphiredresses.co.uk

Ivory Belle at Sapphire

Bridal wear. Book an appointment at
www.ivory-belle.co.uk
or call: 01628 530516

Please follow us on Twitter @sapphiredresses
Please like us on Facebook sapphiredresses

The Bounty

Cockmarsh, Bourne End

www.thebountypub.com

Call 01628 520056 for directions

Winter:
Open weekends for drinks and food.

Summer:
Open daily from noon. Food until 8pm, drinks until 11pm

Hedser Rock 'n' Roll Jukebox presents our annual



CLASSIC BRITISH & AMERICAN CARS, PICK-UPS, BIKES, TRIKES & HOTRODS SHOW
Sunday 19th June 2016
 All classes of British cars, American cars, Pick-ups, Hotrods, Bikes & Trikes
10am - 6pm

Saturday Afternoon
 Free overnight Camping for car show, food van available. No need to book just turn up.

Rock n' Roll Record Hop with DJ Jivin George and Wildcat Pete
 £6 - 7.30pm till late

- Hot Food Van
- Music played by DJ Wildcat Pete playing Vinyl!
- Bar open all day (Milk & Ice)
- Ice Cream Van
- Stalls
- Ample Free parking (car park/field)
- Trade Stands available at reasonable rates
- All monies go to Hedser Social Club
- No need to book, just turn up

Classic Car driver entry to show – FREE, £1 for passengers
 Entry to show: Adults £4, Children under 14 FREE

HEDSOR SOCIAL CLUB - Hedser Road, Bourne End Bucks SL8 5ES
(West to the Rowland Garden Centre)

For more information call George on 07721 842142 or email george.gutrel@btopenworld.com
www.justdanze.co

SUPPORTERS OF: ST TIGGYWINKLES WILDLIFE HOSPITAL & BREAKTHROUGH BREAST CANCER



Cliveden celebrates 350 years...

Ever since a duelling duke built a house for his mistress in 1666 Cliveden – just up the hill above Hedser – has had its moments of notoriety, royal patronage, political intrigue and an endless list of visiting personalities creating its own Who's Who for 350 years.

It's our local National Trust estate and if you haven't visited before, this year is a must. Conservation work on the South Terrace will restore the stonework while the views along the River Thames valley are spectacular. And, after five years of creative craftsmanship, the steps from terrace to parterre are now open again.

Below the South Terrace and behind highly decorative iron gates lies a Sounding Chamber formerly used for musical performances to impress guests. Now open to the public for the first time visitors will be able to see the domed ceiling, beautiful brickwork and ornate marble floor.

Recreating the musical delights enjoyed by those guests, a sound experience has been commissioned that will transport today's visitors back through the centuries. And it's all part of a history trail that challenges individuals and families to learn more about the house, those who lived there and the wider estate.

Cliveden is open every day from 10am to 5.30pm. Entry is free to NT members. Entry charges apply or take out membership on-the-spot. Gardens, statuary, an imaginative play area, maze, walled vegetable garden and extensive walks offer an inspiring family experience.

advancedentalservices.co.uk Bourne End 01628 525223

Tip the balance
 in favour of good dental health:



advance dental services

1 Station Court Station Road SL8 5YP

CPC
 CRUSADER PEST CONTROL

RELIABLE PROFESSIONAL SERVICE FOR:

- RODENTS • COCKROACHES • ANTS • FLEAS
- BED BUGS • FLY KILLER UNIT • BIRD CONTROL
- WOODLICE • GREY SQUIRREL • WASPS & BEES
- FLY CONTROL • FLY SCREENS

EMERGENCY CALL OUT

DOMESTIC & COMMERCIAL • FREE SURVEY • FULLY INSURED
 Don't be bugged ring us now

23 Years Experience
 Unmarked Vehicles

01628 525025




Top photo by the NT's John Millar. Above The Sounding Chamber by Lydia

Bourne End & Cookham Probus Club By John Daymond

At our March meeting Mike Dewey presented a talk entitled *Then and Now: A walk through our local villages*. Mike is a founder of SWOP (Sharing Wycombe's Old Photographs) and has accumulated a huge number of interesting pictures going as far back as 1890. His presentation featured the villages of Bourne End, Flackwell Heath and Wooburn and many old photos of the region were shown, dating back to the 1900s. These produced a lively interaction with some of the long-established local residents present and it was fascinating to see how vastly the area has changed since the start of the 20th century.

If anyone has old photographs of any Buckinghamshire village, Mike would be delighted to see them. The current collection can be accessed on www.swop.org.uk.

In April we were given a riveting presentation from Capt David Render on his experiences in WWII. He had joined the Army in 1942 and later received his commission at Sandhurst.

At the invasion of Europe by the allied forces in 1944 he was on a Landing Craft transporting 16 tanks. Arriving at Gold Beach on D-Day+4, the ramp was lowered with the order to disembark.

Tragically the first tank sank upside down with the loss of the crew, as the ship's captain had not realised there was a deep trench in the sea at that point.

After relocating the craft, the remaining tanks all disembarked safely. David was then seconded to the Sherwood Rangers Yeomanry, which was part of Montgomery's 8th Armoured Brigade.

As a 19-year-old Second Lieutenant he was made commander of a troop of four Sherman tanks. He described how they confronted the German Panzers, which had a far superior firepower, and how his unit fought on till the end of the war through Belgium, Holland and Germany. The casualty rate among tank crews was exceptionally high and the SRY lost 59 officers and more than 50 tanks during the conflict. Capt Render was extremely lucky to be one of the very few to survive.

Anyone who would like to join our Probos Club should contact Brian Print on 01628 523739.

Inner Wheel Club By Diana Hyde

Happy Birthday, Ma'am. The Inner Wheel Club of Bourne End & Cookham sent a special birthday card showing the IW members toasting Her Majesty on the occasion of her 90th Birthday.



The Annual Charity Bridge Tea Party was very well attended and provided a boost for our charity funds.

Beneficiaries will be announced at the Changeover Evening in June.

Rotarian Richard Monger gave us an *Idiot's Guide to Facebook* in April, and although the meeting was very well attended, some members had reservations about joining Facebook. For St George's Day, the Inner Wheel and Rotary Clubs of Bourne End and Cookham enjoyed a traditional roast beef dinner at the King's Head, Little Marlow. The guest speaker Chris Khoo, former High Sheriff of Berkshire, gave a scintillating talk on the history of the role of high sheriff, predating 1066, and shared his many experiences when in office.

Our AGM in May promised to be good fun with our publicity officer giving a powerpoint presentation of the activities that we have been involved with during this IW year (warts, grisly bits and all!).

Little Marlow & Well End WI By Judy Wilson

The end of March saw us celebrating our birthday with a very up-market ploughman's lunch and birthday cake. The draw for our annual bursary was won by Janice Eckhart who intends to use it for a craft course.

Cliveden and the Astors was the title of Jennifer James' talk at our April Meeting. She gave us a brief history of the house and estate from its origins culminating in the history of the Astor Family.

Although originating in Europe, the family made its fortune in America and with an anglophile Astor at the helm, they became the proud owners of Cliveden until the days when it was passed to the National Trust.

Several of us attended the Bucks Federation of WIs' Annual Meeting in Aylesbury where, apart from the usual meeting business, we were given short presentations by the immediate past and current High Sheriffs of Bucks – both ladies. They spoke of their roles as representatives of Her Majesty in the county, and how they try to incorporate a theme into their year of office. The current holder is concentrating on loneliness, not just among the elderly, but also among teenagers who, spending time on electronic communication, become isolated from face-to-face contact/conversation with their peer group.

Later in the meeting we had an entertaining and thought-provoking speech by Judge Sheridan, concerning our resolution 'Care not Custody', and a fascinating presentation by an ex-RAF G-force fighter pilot, Mandy Hickson, who is 6ft tall. It wasn't surprising to learn that her call sign was Big Bird.

During April members also attended a group history day and the Monet to Matisse Painting the garden exhibition at the Royal Academy. Our monthly rambles, both long and short versions, continue to be popular as do our Craft and Chat sessions.

A little while ago we lost a dearly-loved member. One of the last outings she came on with us was a boat-trip on the Thames, with some of us taking turns to push her wheelchair. It was with pride that three of us were invited to join her family and friends and represent the institute as her ashes were scattered on the river, and to drink a toast in her memory.

May saw us, as with every WI in England and Wales, debating two resolutions to take to the AGM in Brighton, on Food Waste and Care of Dementia Patients in Hospital. For a change members were put into groups, and after short presentations, were invited to discuss the pros and cons, strengths and

weaknesses before presenting a conclusion of all four points to the room, and a vote being taken.

We look forward to celebrating the Queen's 90th birthday with a special tea, and a physiotherapist will be coming to talk to us in June. Visitors are always welcome. Judy Wilson 01494 438380.

Bourne End & Cookham Rotary Club By John Dunsterville

President Sue is now in the final few months of her duty as head of this vibrant club. Always pushing the club's active involvement with the local schools, Sue has kept our club on a steady course.

We had terrific fun at the Queen's Celebration Street Party as well as the golf day and more recently at the St George celebration which was organised in conjunction with The Inner Wheel Club of Bourne End & Cookham.

Our work abroad carries on in Africa, with the Zambia Project and refurbishment of school buildings in Libala gaining momentum. The Polio Campaign is still in full swing, with the new and more powerful vaccination going ahead worldwide. We will eradicate this deadly disease shortly, and as long as our Rotakids keep the pressure up with the funds they raised by selling purple crocus and tulip bulbs, the awareness and importance of this project is assured. The enthusiasm of the Rotakids, Interactors and Rotaracters (young Rotarians) is really something to behold.

We are always looking to increase our membership and help in the many projects we have running, so if you are recently retired and are looking to meet a wonderful and diverse bunch of lively Rotarians do please get in touch with Maureen on 01628 850595, or me on 01628 521112. We have such a lot to do this coming year and the community could do with your talents and experience.

Bourne End and Wooburn WI By Janet Spill

At the April meeting Lucy Allen entertained members with a talk about her life as a stunt woman, accompanied by photographs of her exploits.

Also that month, we were pleased to join forces with Bourne End WI to provide lunches at the Community Centre for the Women of the World Walk, which this year took the form of a Treasure Hunt around Bourne End.

All visitors are welcome at our meetings in St Dunstan's Church Hall on the second Monday of the month, starting at 2pm.

Glory Mills Bowls Club By John Palfreyman

The club has entered two teams in the Bucks League and one team in the Chiltern & Thames League. It has also arranged 26 friendlies with teams throughout Buckinghamshire and Berkshire.

Work has continued on the green and its surroundings which have all benefited from the very mild winter that we have had so far.

If you are interested in joining a club that puts its members first, can provide you with regular games and provides coaching for beginners, call 01494 673859 or email shirley.churn@btinternet.com



Upper Thames Sailing Club

News by Debbie Kite

The annual Open Day in April was a huge success, with sunshine and breezes to give aspiring sailors a short introduction to the sport.

More than 200 people came along to the club and were taken out for a sail in the club training boats or the tall vintage Thames A Raters.

Club vice commodore Sarah Percival says: "What a fantastic day! Nearly 100 club members helped out, 150 burgers and sausages were barbecued, and hundreds of pieces of cake were eaten. The beer ran out at 6pm!"

One of the aims of the day is of course to recruit new members, and we were pleased to add a mix of those new to sailing, experienced dinghy and big boat sailors to the club, as well as new social members who want to enjoy the clubhouse bar, catering and views of the river.

In the afternoon "Tea by the Thames" raised a record £435 for the Sail4Cancer charity, which was topped up to £540 by the stalwarts still tidying up and lingering in the bar, so that the club met a matched fundraising target to buy more junior buoyancy aids.

If you missed the Open Day, new members are welcome at any time.

Email memberships@utsc.org.uk, call 07732 405304, or call in during sailing on Sundays or Wednesday evenings.

The next major event for the club is our Bourne End week regatta during the May Bank Holiday weekend, and all the racing can be watched from the public footpaths.

Look out for the drama of the A Rater starts, especially for the Queen's Cup start on Bank Holiday Monday at midday.



New members are always welcome for sailing or social membership.

↳ Family-friendly club

↳ RYA training courses

↳ Bar, catering and fabulous views from the clubhouse

Call in or see www.utsc.org.uk



UPPER THAMES SAILING CLUB
Riverside, Bourne End, Bucks, SL8 5RF

Access via the towpath from Bourne End Marina, or via Coldmoorholme Lane

BEAUTIFUL TREES MAKE A HOUSE A HOME.

- Tree & Shrub Pruning
- Cabling & Bracing
- Fertilisation & Soil Care
- Insect & Disease Management



Please Call 01494 677 889 or visit BEACONSFIELD@BARTLETTUK.COM  

The Pentagon Clinic Osteopathy and Physiotherapy

Stella Halpin BSc.(Ost.)
David Turner B.Ost.
Morag Bowie M.C.S.P.M.H.P.C.

The Annexe
Bourne End Day Care Centre
Wakeman Road, Bourne End
Bucks SL8 5SX

email: info@pentagonclinic.co.uk
www.pentagonclinic.co.uk

Tel: 01628 533200

Our highly qualified and established Clinical Team continue to provide Osteopathy, Physiotherapy and Sports Massage for all ages. We have a wealth of experience in the assessment and treatment of a wide range of musculoskeletal conditions.



Sporting talent rewarded at academy

One of the highlights of the school year at Bourne End Academy is the Celebration of Sporting Excellence.

This year's event, in April, once again applauded those students who have made a sporting contribution towards the school's high record of achievement.

To emphasise the event's theme of "making the most of opportunities", the school invited back some successful past students to talk about their achievements in the sporting world. Joe Gleeson (pictured bottom left) a pupil at the academy from 2004 to 2011 spoke about how he'd grabbed every opportunity he'd been presented with to give him a career in sport. He is now Outdoor Activities and Games Organiser at Sir William Borlase's Grammar School and coaches youngsters in other regional and national organisations, including the Duke of Edinburgh Award.

Joseph Dermanovic sent a video from the USA where he is a successful soccer coach and Tom Donati (pictured bottom right) is a FA UEFA coach and assessor as well as company director of TD Sports Coaching. In his motivational speech he urged his audience of sporting students to grab every opportunity to learn new skills and try different sports.

Current students also spoke and one of the school's biggest successes, Chloe Dodge, (pictured at the front of the group photo) who is the u40kg British Schools Champion for Judo gave an impressive judo demonstration with her training partner, Jamie.

Bronze, silver and gold awards as well as special awards for sporting excellence, community support and outstanding achievement were also handed out in football, netball, basketball, badminton, hockey, trampolining, athletics, cricket, dance and rounders.



Clinical Hypnotherapy and Psychotherapy

To tackle...
Stress & anxiety
Phobias and fears
To boost...
Confidence & wellbeing

Call 07518 018 363
www.buckstherapy.com



Secondary Maths Tutor

Qualified Maths teacher in Bourne End for one to one help.

- Common Entrance
- Key Stage 3 and GCSE
- AS/A Level

T: 01628 531521
 E: kath.acres@spadeoakfarm.com
www.spadeoakfarm.com/Tutors

CHRIS GATES

Decoration & Repair Services

- *Top quality interior and exterior decorating
- * Interior carpentry, plastering, coving and tiling
- *Repair and restoration of exterior woodwork
- *Box sash window repair and refurbishment
- *All types of glazing repairs
- *Fully insured with references available on request

For advice and a free estimate
 Tel: 01628 529698
 Mob: 07802 457274
 Bourne End

BASL

BUILDING & MAINTENANCE LTD

Mathew & Paul Billingham - Seventh generation builders

t: 01628 298185 w: www.BASLbuilding.co.uk e: Mathew or Paul@BASLbuilding.co.uk

We undertake any and all work to your home to a high standard and cost effectively

Community Market focus

OWEN HUDSON – CHEESEMONGER

Characterful Owen Hudson, dressed in tweeds, waistcoat & silk handkerchief, can be found outside the Library at Bourne End Community & Craft Market on the second Saturday of the month from 10am to 1pm. Rosie O'Hagan chatted to him about his passion for cheese and life as a High Wycombe-based cheesemonger.

How long have you been a cheesemonger and how did it all start?

Following a mixed bag of careers including selling flowers and a horse-drawn caravan window cleaning business, I stated selling cheese full time eight years ago, although I had been selling Somerset cheddar since 1996. Very simply, I didn't like factory-produced cheese and wanted to offer the full range of personally-sourced traditional cheeses from all parts of the British Isles and Ireland to local residents.



What about your family background?

My father and mother worked as cartographers during World War II. Their work contributed to the success of the Dambusters in Germany. I'm also very proud of the fact that my father, Frank Hudson, carved the Red Lion for the former Red Lion Hotel in Wycombe High Street from where Churchill gave a famous post-war speech. Woodcarving is still in the family as my cousin Colin Mantripp is a master woodcarver at Lillyfee Studio in Wooburn Common.

How many varieties of cheese do you normally have in stock and what are your specialities?

Depending on the time of year, from 30 to 40 different varieties. Everyone loves Cheddar and one of my favourites is the prizewinning Westcombe Cheddar. I'm especially proud of the Dorset Blue Vinny from Woodbridge Farm near Sturminster Newton made with Holstein Friesian milk. The recipe had nearly died out but was revived in the 1980s. This delicious blue cheese, sometimes crumbly, sometimes creamy as butterfat content varies according to the time of year, is good with sweet cider.

Steer clear of cheap copies made with Stilton and called Blue Vinnie with a 'y'. Then there is the semi-soft rind-washed Dorset Francis cheese from the village of Child Oakford with a distinctive pale pink, sticky rind and dense buttery flavour. It won best new cheese in 2012 and goes nicely with a dry Riesling or cider. For those who like a Brie-style cheese, I recommend either the St Endellion made with Cornish double cream which is especially good with a spicy white wine or, from closer to home, a local sheep's Brie from Riseley village in Berkshire. Wigmore cheese is great eaten with cold green grapes or warm with red onion chutney.

Which markets do you sell at?

The midweek markets in Amersham, Chesham and Tring; seasonal steam fairs and a number of monthly weekend markets including Marlow and, of course, Bourne End. Contact Owen on 07575 609906.

For BECCMARK call Rosie O'Hagan 07989 716635.

Bourne End Community Library by Inka D'Agostino, library manager

We have two interesting events lined up for our monthly Lifestyle Club. On June 17 our guest speaker will be Derek Smith whose talk will be entitled "Potluck". The subject will not be revealed until the day so if you are intrigued please join us and be enlightened.

July's Lifestyle will take place on Friday 29 when we welcome the Just Write group who will talk about their book and how the group was formed. As a taster here is a short synopsis of their successful first book *Spilling the Beans* which won Writing Magazine's anthology competition for books published in 2014.

Spilling the Beans

A day in the life of a coffee shop

Drink in and delve into the minds of the people around you... the old man in the corner trying out a Macchiato... the troubled girl warming her hands and her esteem with hot chocolate... the extra shot of caffeine for the calculating career woman...

Spilling the Beans invites you to step inside the coffee shop and into the lives of baristas and beverages. Linger for the day with refills and take away the freshly brewed grounds for gossip.

Lifestyle talks take place once a month on a Friday from 10.30 to midday.

Fall Prevention Event

On Wednesday July 13 at 2pm Pound House Surgery will be hosting an event here at the library, which focuses on fall prevention. This is a community event, not just for Pound House patients, and all are welcome.

Junior Events

Our Summer reading challenge will be *The Big Friendly Read* and it kicks off in July. We shall be posting details of events on our website and Friends Facebook page. Please do encourage your children to take part.

Bounce and Rhyme for toddlers takes place every Thursday term time at 10am.

Little Star Musical Storytelling is held on the third Tuesday of every month at 1.30 to 2.15pm. The next two sessions will be on June 21 and July 19. Much loved children's stories are brought to life with live music, puppets, singing, instruments and movement. This is for children 0-3yrs and costs £6.

Finally a reminder that we have something of interest for everyone at the library, from yoga, tai-chi, meditation and pranic healing to Italian classes and Sing Your Pain Away. Computer sessions take place every Friday morning, if interested please book your place.

We also have some wonderful rooms for hire at very reasonable rates.

For further information about our events or room hire please email: lib-boe@buckscc.gov.uk or phone 0845 2303232. Facebook: Friends of Bourne End Library

Hawkinsport

TEAMWEAR SCHOOL UNIFORM
SPORTSWEAR CORPORATE WEAR

Tel: 01628 819242 sales@hawkinsport.co.uk
Unit 10a Wessex Road Industrial Estate,
Bourne End, Bucks, SL8 5DT

JG dance
Jeannine Greville Dance Academies
& Theatre College

2½ - 18 years, Girls & Boys
Beginner classes in Ballet,
Jazz, Tap & Acrobatics
FREE TRIAL LESSON

RAD, ISTD & LAMDA
Classes up to Advanced 2
Twice Yearly
Theatre Performances

Call: 01491 572000 email: info@jgdance.co.uk
BOURNE END - Wednesdays after School WWW.JGDANCE.CO.UK

**QUALIFIED
CARPENTER/HANDYMAN**



- 25 years experience
- Reliable and friendly service
- All types of carpentry including:
 - Fitted kitchens
 - Doors, skirting & architraves
 - Flooring
 - Fitted wardrobes
 - General handyman/maintenance work

For a free & competitive quote call
Paul on 07857 074523 or 01628 523314

C.O.D.GROUNDWORKS
Specialists in all
types of Groundwork

- * Paving
- * Patios
- * Fencing
- * Block Paving
- * Drainage
- * Driveways
- * Patio Cleaning
- * Concreting

NO JOB TOO SMALL
FREE ESTIMATES
Tel: 01628 528637
Mobile: 07778 371552

Thames Music Tuition **Guitar, Piano & Flute**



All ages/abilities welcome
Tel: (01628) 525140
Mob: 07920 165619
www.thamesmusic tuition.co.uk

Painter & Decorator
N. W. Upward
2 Fisherman's Way
Bourne End
All wall coverings hung.
Glazing & Wall Tiling.
Estimates Free.
01628 528921

YOGA WITH LINDA

Monday morning, Tuesday evening
and Wednesday lunchtime
Bourne End
Ring: Linda Jolliffe 07503212815

Stacey

**Home Visiting
Foot Health
Practitioner**

**A new Foot Health service
available in your area**



Services provided -

- *First consultation Free*
- *Routine nail care*
- *Hard skin, Corn and Callus*
- *Verrucae treatment*
- *Ingrowing toe nails*
- *Fungal nail treatment*
- *Elderly care home visits*
- *Home Visits*
- *Local, Professional, Friendly Service*

**For further information or to
book an appointment please
contact Elizabeth Stacey on**

07817 873592

or email - lizstacey70@gmail.com

Elizabeth Stacey MCFHP MAFHP

ALLAN WISE & CO
ROOFING SPECIALIST

Complete Roofs or Repairs
Large or small jobs
Estimates FREE
01628 525740

MANKIND
MENS HAIRDRESSING

Tel: 01628 528974

15 The Parade
Bourne End
Bucks
SL8 5SA



R S HALL UPHOLSTERY

31 years experience

ALL UPHOLSTERY WORK UNDERTAKEN

- * Re-upholstery
- * Sofas & Chairs
- * Loose Covers
- * Antiques
- * Pubs & Clubs
- * Schools
- * Hospitals
- * Office Chairs

Large
Contracts
Over 300
fabrics
available
Free
estimates

*Also fabrics at competitive prices,
upholstery sundries and all
sizes of foam*

Contact Bob: 07809 140988
T: 01494 461481

E: contact@rshallupholstery.co.uk
www.rshallupholstery.co.uk

**MAINTENANCE &
LANDSCAPING**

Property Maintenance, Professional
Landscaping, Fencing,
Specialist Patios,
Paving, Tree Surgery, Etc.

DAVID J KIMBER, 01628 810361 07850 124241

To advertise in **Target**
call **01628 525415**
or email

advertising@targetmagazine.org.uk



Left (l to r) Sue Looker and Derin Waller and above (l to r) Patricia Ashcroft and Sue Sepehri

Art exhibition and sale of paintings by The Wednesday Group

Throughout the month of June, including weekends, there will be an exhibition and sale of paintings by The Wednesday Group in Bourne End Library.

The subjects are varied; landscapes, portraits, abstracts free and structured. The painters are experienced and enthusiastic and all have exhibited their work in a variety of venues for many years. The styles are as individual as the painters, and charcoal and ink, collage, oil and acrylic are among the media they use.

This group of artists meets once a week at Norden Farm Arts Centre in Maidenhead, giving one another the benefit of their critical experience and sharing ideas and friendship. The Wednesday Group is part of the Maidenhead Painting Club.



Bourne End (Bucks) Community Association
Wakeman Road, Bourne End, Bucks, SL8 5SX

LACE & CRAFT DAY

Bring your lace/embroidery/cross stitch etc. for an enjoyable day
and meet up with friends and make new ones

Saturday 30th July 2016

10.00 to 4.00pm

Bourne End Community Centre
Wakeman Road, Bourne End, SL8 5SX

**Tickets £3.50 (to include tea/coffee biscuits and cake) in
advance from the Centre Office or ring 01628 524214**

Please bring a packed lunch

For more info email secretary@bebca.org.uk or ring 01628 524214

Lace & Craft Day is organised by Bourne End (Bucks) Community Association – a
charity registered in England and Wales No. 300236.
Lace & Craft Day is a fund raising activity of Bourne End (Bucks) Community
Association



**St John the Baptist Church
at Little Marlow**

Flower Festival

celebrating
Glorious Anniversaries

Saturday 25 & Sunday 26 June
Midday to 5pm with cream teas,
plant & vintage
bric-a-brac stalls

Preview Evening
Friday 24 June at 7pm
Tickets £10 to include glass of wine,
canapés and music

Tickets from
Churchwardens
Wendy Osborn
07970462149
Jeff Smith
07775957090

OUR LOCAL CHURCHES KEEP IN TOUCH

Community Church

Everyone is welcome at our Sunday services which start at 10.30am (refreshments from 10am). Sunday services are at the Chapel on the Green, Wooburn Green on June 26, July 24 and July 31, and at the Meadows School (free parking) on June 5, 12, 19, July 3, 10, 17.

We're excited to announce a new monthly Sunday evening 'Gather' session, an opportunity for an extended time of creative worship. It may include lively music, songs, poems, dance, art etc and will be on June 5 and July 3, 7pm to 9pm, at the Chapel on the Green.

Please visit our marquee at Wooburn Fête on June 18 for drinks, scrummy cakes and cream teas with all proceeds going to the One Can Trust (local food bank).

All Dads and their families will be very welcome at a special family oriented service on Sunday June 19 (Father's Day) at 10.30am at the Meadows School.

Thursday July 21 will be the last Little Steps parent and toddler group before the summer holiday. Sessions run on Thursdays, 10am to 11.30am in the church hall behind the Chapel on the Green.



St Nicholas' Church, Hedsor

The last Saturday in June (25th) means Hedsor Riverside Fair, not to be missed with its boat rides, cream teas, tombola, plant, jewellery and ceramics stalls, and children's games. It takes place at Orchard Dene, Riversdale, from midday to 4.30pm.

The church is open each Sunday afternoon in June, July and August, 2.30pm to 4.30pm, for all to enjoy this beautiful 12th century church.

Our service of Holy Communion takes place at 9am each Sunday with our Pathway Family Service on the second Sunday of each month. The Sung Communion on the fourth Sunday is particularly special with our choir present.

Pebbles (young church) also meet every fourth Sunday with all the church family together. We serve coffee after every service.



St Mark's Parish Church

Pentecost Sunday (May 15) saw a new service at St Mark's as parents and children gathered informally for tea and cakes, followed by a mixture of activities, songs and discussion time in a relaxed atmosphere. We hope that this service will become a place for those who find it difficult to worship with us on Sunday morning. This will take place fortnightly, check our website or Facebook for details.

The Pilgrim Course is an opportunity to learn together. Currently we are studying the Eucharist or Holy Communion. Just turn up on Thursdays at 7.45pm at 35 Blind Lane.

The Puppet Theatre Club welcomes children to train as a puppeteers on Tuesdays at 5pm in the hall. For eight years old upwards.

Puffins is the toddler group that meets in



the hall on Wednesdays, 10am to 11.30am, a lovely space for parents to catch up while children play together.

The Summer Fair is on Saturday June 4, 10am to 2pm. Do come along and join in with our many activities and stay for lunch.

On Sunday June 12, St Mark's is providing afternoon tea for the Queen's 90th birthday celebration in the community centre.

We are encouraged by the enthusiastic support for our Missionary Link partners in Guatemala as they work with street children. So far £605 has been raised.

Pathway on the second Sunday of the month at 10.30am is a contemporary service for families to worship together. On all other Sundays, Holy Communion is at 10.30am.

Details from www.achurchnearyou.com and www.parishesofhedsorandbourneend.co.uk the Rev Janet Binns 01628 523046, or the administrator Alison Gray 01628 298022.

St John the Baptist, Little Marlow

As mentioned in the last issue of *Target* the Rev John Smith joined the team, and Bishop Alan has now issued John with his license as curate.

Music at the Manor (Little Marlow) will be on Saturday June 4 held by kind permission of Mr and Mrs Jason

Downes. The gardens will be open from 5pm, bring a picnic (and a gazebo if you have one and think it might be necessary) and listen to music by the Bisham Concert Band and Aca-Holics, a Ladies Barbershop Group. Tickets £12.50 for adults, £5 for children. To book call 07775 957090 or 01628 521793.

Our Patronal Flower Festival is entitled Glorious Anniversaries. On Friday June 24 there will be a preview with a glass of fizz and canapes, 7pm to 9pm, accompanied by music on the flute and violin. Entrance is by ticket only, £10 from Wendy Osborn 07970 462149.

On Saturday and Sunday June 25 and 26, midday to 6pm, the church will be open with sales of teas, plants and vintage items.

For information on services and special events visit www.4u-team.org.



St Paul's and St Mary's Church, Wooburn

With our roof repairs complete, we moved back into St Paul's Church for our services on May 8. We are holding a weekend of celebration for the completion of the roof on July 16 and 17, including an open afternoon and a service of celebration led by the Bishop of Buckingham.

We look forward to seeing you all at the Wooburn Fête on Saturday June 18.

On June 26 our popular Teddy Bear Parachute Jump begins at 12.30pm, with a barbecue, refreshments and stalls. Please come and join us!

Open Sundays continue from July 3 until September 3, 3pm to 5pm. Do join us for refreshments and a chance to look around our beautiful church.

Our Children's Sunday Club welcomes young people to join in the fun from 9.30am each Sunday. We have Pre-School, Key stages 1 & 2 groups and our youth group meets on Monday evenings for young people from 11 years old.



All the normal groups at both St Paul's and St Mary's continue until the school holidays, with Toddlers on Tuesdays at 9.30am and Tots' Praise on Fridays at 9.45am in the church hall, and at St Mary's on Fridays our short Communion is at midday followed by a shared lunch.

The church hall and garden in Town Lane, Wooburn are available for bookings on stpaulswooburnparishoffice@gmail.com, via our website or through the office on 01628 525512. For details of services and events visit www.stpaulswooburn.org.

Cores End United Reformed Church

Marking the end of Christian Aid Week on May 22 there was a bread and cheese lunch after the church service.

On Friday May 27 at 7.30pm we hosted an EU Debate with Dominic Grieve QC (MP for Beaconsfield) and Gerard Batten (MEP for London) putting forward the choices for the forthcoming referendum.

Our concert on June 18 features the Virtuoso Wind Ensemble performing light classical music. Tickets £10, £7 for concessions to include refreshments. Tickets from Helen Rathbone on 07912 696658.

We're hoping for sunshine on Sunday July 17 for a walk starting from Gossmore Recreation Ground car park and ending at Cores End URC for afternoon tea at 4.30pm, followed by a short Songs of Praise service at 5pm.

Our Summer Fun Day on Saturday August 6 for ages five to 11 will be a day of craft, music and games, 10am to 3.30pm, cost £5. Details from Ann Pendergast on 01628 526865.

Our Sunday services are at 10.30am, with a communion service on the third Sunday every month, a crèche for the little ones and junior church for older children. Check our website www.coresendurc.com.



St Dunstan's Church, Bourne End

We are looking forward to welcoming back our parish priest, Fr Francis Higgins, in time for Confirmation and First Holy Communion celebrations, after his sabbatical leave at Leuven University in Belgium.


While away studying and carrying out research, Father Francis also had the opportunity to attend a course in Jerusalem and take part in the Easter liturgies – an incredible, once-in-a-lifetime experience, without doubt.

We shall be very sad to say goodbye to Fr Henry Sanni, who has looked after us so well over the past months, but rumour has it that he may not be returning to Nigeria immediately, but extending his stay and undertaking some studies of his own. So hopefully it will only be a case of "au revoir" and we wish him every success in his new project.

We welcomed the Presentation Sisters from Mongu & Kaoma in Zambia whose work in care homes for physically disabled children and orphans we help to support through our fundraising efforts, together with our sister parish, St Teresa's, in Beaconsfield.


Our next monthly charity sale in aid of the home in Kaoma is on Saturday June 4, from 10am to midday in the church hall. Please do come along and support this worthy cause.





centreTalks

**Sir Stanley Spencer
with Chrissy Rosenthal**



Bourne End Community Centre
19:45 on Thursday 9th June

£5 (£4 for Ass'n members) on the door or
£4 (£3 for members) in advance from the
Centre Office or the Centre Bar
www.bourneendbucks.com/centreTalks
A fund raising activity for B.E.(B).C.A.

COME AND JOIN IN
THE QUEEN'S 90TH
BIRTHDAY CELEBRATIONS



@ BOURNE END
COMMUNITY CENTRE
SUNDAY JUNE 12TH 2016





ST MARKS CHURCH
WILL PROVIDE
AFTERNOON TEA

AFTERNOON TEA
BBQ
DRINKS AT THE BAR
MUSIC - FOOD - PARTY
FROM 12.30 PM



Live coverage on big screen of
THE PATRONS LUNCH
parties and celebrations across the UK




centreTalks

Kitty from Anong Thai
Thai Summer Food



A demonstration in making Thai food

Bourne End Community Centre
19:45 on Thursday 14th July

£5 (£4 for Ass'n members) on the door or
£4 (£3 for members) in advance from the
Centre Office or the Centre Bar
www.bourneendbucks.com/centreTalks
A fund raising activity for B.E.(B).C.A.

BOURNE END (BUCKS) COMMUNITY ASSOCIATION Membership costs

INDIVIDUAL MEMBERSHIP over 18 years of age	£5
JUNIOR MEMBERSHIP under 18 years of age	£5
FAMILY MEMBERSHIP husband/wife/children of school age	£10
ASSOCIATE MEMBERSHIP (outside the area of benefit)	£5
ASSOCIATE FAMILY MEMBERSHIP (outside the area of benefit)	£10
SENIOR CITIZEN MEMBERSHIP	£3
SENIOR CITIZEN FAMILY MEMBERSHIP	£4
LIFE MEMBERSHIP husband/wife/children of school age	£60
SINGLE LIFE MEMBERSHIP	£30

Annual subscriptions are payable on or after 1 January each year. Family membership carries one vote. Associate and Junior Membership carry no vote.

APPLICATION FORM

Cut out and send or hand in at the community centre,
Wakeman Road, Bourne End, Bucks SL8 5SX

NAME.....

ADDRESS.....

.....

Email.....

TYPE OF MEMBERSHIP.....

AMOUNT PAID.....

CENTRE NEWS

Bourne End (Bucks) Community Association
Presents Live Music & Food



THE ROCKING SIXTY'S

SATURDAY June 18th 2016
8pm
In the Small Hall * Includes Buffet
£5 per person

Tickets from Centre Office (01628) 522604
Laura M : laura_manning@outlook.com



Bourne End Community Centre Wakeman Road SL8 5SX



Bourne End
(Bucks)
Community
Association

SUMMER VILLAGE FETE

JULY 2nd 2016
10AM – 2PM

STALLS – LIVE MUSIC – BBQ – REFRESHMENTS –
BOUNCY CASTLE – FREE PARKING – TOMBOLA

Music From The Bourne End Guitar Club

BOURNE END COMMUNITY CENTRE WAKEMAN ROAD

BOURNE END COMMUNITY CENTRE

SUMMER DANCE

2016



WITH MUSIC FROM FUNCTION BAND

TARGET BAND

SATURDAY 23RD JULY 2016



TICKETS £10 7.30pm-11pm

BBQ & BUFFET FOOD INCLUDED

POP, ROCK (&ROLL!) & SOUL FROM 60'S TO THE PRESENT DAY

TICKETS FROM CENTRE OFFICE OR LAURA MANNING (07834 971131)

BOURNE END COMMUNITY CENTRE, WAKEMAN ROAD SL8 5SX 01628 522604

Chess

The first team managed a 100 per cent record in the Bucks League while the second team won division two with the third team coming third in that division. In the Berkshire League with one match to go, the first team are likely to finish third in division one while the second team finished a creditable mid-table position in the second division. The Chess Congress was won by Robin Haldane of the Brixton & Streatham club. Andrew Smith came third overall with local member Dave Turner runner up in Section B. Luke Vallis shared third place in in Section B as did his brother, Nicholas, in Section C. Andrew Hill was similarly placed in Section D.

Darts

The Winter League is now all but over. All that remains is the Finals Night where the finals of all the various League competitions take place.

We have a reasonable representation with Bill in the Secretaries semi-finals, Julie in the Ladies final and Bill, Pete and Gary in the Threes Final.

The League Winners were Black Lion A by a convincing margin, The Challenge Cup Winners were Black Lion A and The Minor Cup Winners were Bourne End Community Centre. The Summer League will commence shortly with two teams representing the community centre and a possible team in the Friday Night League.

Angling Club

news from the water's edge

The club's last outing this season was back to New Farm near Fifield. The weather was bright and breezy, but the temperature low and this seemed to put the carp off.

Everybody caught with Rudd being the fish most willing to feed, mainly at short range.

There was one large bream caught in the last few minutes which clinched the match. Top weight was 15 pounds with everybody else weighing with 6 to 10 pounds each.

An enjoyable day out made better with the arrival of bacon butties half way through the match.

May also saw our AGM, prize giving and rejoining night which was held in the *Target* room. Usual format with lots of tales and stories and leg pulling. Membership remained the same as we lost one member and gained one new member. It's not too late to join – just contact Terry on 01628 851001. Everybody is now looking forward to the new season starting in June with our first match back at West End Pool on Sunday June 19.

OUR GROUP MEMBERS KEEP IN TOUCH

1st Wooburn Scout Group

All sections paraded through Marlow on the St George's Day Parade, looking very smart. The lighting of the beacon in Sappers Field was also attended by Beavers, Cubs and Scouts, who afterwards built their own fires and cooked delicious campfire goodies.

Beavers' highlights this term are Cub camp in July, a hike in Penn and a visit to Booker Airfield.

Cubs joined with others at a Centenary Camp at Phasels Wood in Hertfordshire. They were excited to see star guest Steve Backshall, one of TV's best-known wildlife presenters. Another camp is in June with the programme including kayaking, backwoods cooking and fire lighting.

Twenty-two Scouts planned to attend the Bucks County Water Activities Weekend in May, with kayaking, dragon boat racing, zorbing, and more.

A big thank you to all the leaders in Beavers, Cubs and Scouts for their dedication in putting together these amazing activities for the children.

At Wooburn Fête on June 18 Scouts will be running activities including the mill spinner, trebuchet, chimney hoopla, coconut shy/tin can alley, smash a plate, splat the rat, hook a duck and beat the buzzers. Please support this wonderful community event.

Bourne End Townswomen's Guild

Winning the Queen's Award for Voluntary Service is just one thing to be said about Workaid. They have refurbished and given to disadvantaged people close to 30,000 tools to help them improve their life. This and more will be the subject of Tom Campbell's talk on June 8.

We relax slightly on July 13 at our Games Afternoon - which can become very competitive.

We meet on the second Wednesday in the month, 1.30pm to 4pm in the *Target* room at the community centre. Visitors are always welcome. For information ring 01628 527931.

Bourne End Flower Arrangement Society

A Day at the Races was the invitation to our tea party at the end of May with an array of fabulous hats in evidence.

Demonstrations take place in the community centre theatre on the first Tuesday of the month at 8pm. Visitors are always welcome to come along paying an entry fee. We can promise you an inspiring and usually very lovely evening.

On June 2 we welcome David Martin who will inspire thoughts of summer holidays with his demonstration called *Visions of Cornwall*.

Summer thoughts continue on July 5 when

Gill McGregor will create displays on the theme of *Summer Delights*.

Our Facebook page has 'how to' guides for conditioning, arranging and drying flowers: www.facebook.com/bourneendFAS.

Bucks Family History Society

Lost in London is the cryptic title of Dave Annal's talk on Tuesday June 14 when he provides guides on solving family history queries relating to the capital and accessing its many record collections. By 1841 London was the most populated city in the world.

On July 12 Ian Waller's quest into army ancestry is called *Rogues and Vagabonds need not apply*. Ian goes into service records - what is available and where to find them.

We meet on the second Tuesday in the month at 7.30pm in the small hall at the community centre, visitors welcome. www.bucksfhs.org.uk

Marlow-Maidenhead Passengers Association

Our AGM on March 25 had representatives from Great Western Railway, Chiltern Railways, Crossrail and Network Rail in attendance. A presentation on local planned improvements was made by Great Western Railway and questions from the floor were answered by the relevant speaker. The recently published Hendy Report indicates delays to the completion of some Great West Main Line electrification works by up to two years. It is not yet clear how this will affect the start of electric services to London.

Failed points at Maidenhead that prevented some branch services from running have now been repaired and not replaced as originally thought necessary.

MMPA has requested GWR to move the stopping point for Reading-bound trains back towards the temporary footbridge at Taplow Station. We have received a response to indicate this is feasible, but so far it has not been actioned.

In the Chancellor's budget statement it was reported that the bid for an extension to the multi-storey car park at High Wycombe station had been successful. This will enable an extension of the car park by 131 spaces, with construction in 2017.

With Crossrail and the electrification of the Great West Main Line, direct trains to Slough and Paddington from the branch will not be available if the branch line is not upgraded as well. Parish Councillor Martin Coker has said: "Four hundred people travel direct from Cookham to Paddington every day. It is vital that upgrade plans for this line are not delayed. There is an on-line petition to keep the trains running." The petition can be found at rbwm-ld.co.uk/enddelay. If you will be affected then please sign the petition.

Although set up by a political party, the petition is a non-political attempt to raise awareness of the effective downgrading of the Marlow Branch.

Rail travel between Bicester North, Stratford-on-Avon and Solihull between mid July and mid-August will be affected by engineering works resulting in a number of services being replaced by buses. Details can be found at www.chilternrailways.co.uk/banbury-upgrade.

Marlow and District Railway Society

March saw a return visit from much published author Colin Boocock, who gave an illustrated presentation on the history of Eastleigh railway works. We welcomed Anthony Coulls, the National Railway Museum's Senior Curator of Rail Transport & Technology, all the way from County Durham in April, with a most interesting presentation about the work of the museum and conservation in general.

On May 19 Tom Painter and Ian Lake from Chiltern Railways talked about Modern Japanese Railways following their visits to Japan.

On June 16 respected railway manager Chris Green will speak about his time running the Inter-City sector of British Rail. Please note the earlier start time for this one meeting is 7.30pm.

On July 21 historian Dr David Turner gives us an insight into Victorian and Edwardian Railway Travel.

Visitors are always welcome to our meetings at Bourne End Community Centre to enjoy not only the presentation itself, but also the bar facilities. Meetings start at 8 pm unless otherwise stated. See www.mdrs.org.uk.

Bourne End Twinning Association

Our Barn Dance in April was enjoyed by young and old alike and we were joined by Dominic Grieve MP.

Our art competition for children to design a picture of Bourne End was won by Elodie Sykes. More about this on page 27.

The visit from our twin village of Octeville-sur-mer took place over the weekend of May 12 to 15. By the time you read this the bunting around the village will have been taken down, but we hope that you enjoyed the festive feeling during that weekend.

On June 18 we will be running a quiz, which is always a popular event, so if you would like tickets do get in touch soon to secure a table of eight, or we can join you with a smaller group.

We have a lot of fun in twinning both during the visits and at our fundraising events throughout the year so if you would like to know more about joining us, or you would like tickets for the quiz, call Liz Yeeles on 01628 521748. You don't have to be able to speak French.

Soroptimists - Thames Valley

Dresses in every colour and size are now on their way to Sierra Leone courtesy of a partnership between the Thames Valley Soroptimists and a talented group of ladies from the Mansfield area. The ladies heard about the relationship which the Soroptimists had built with women and girls living in the Kori area of Sierra Leone where they are helping the local

community build a library and supporting local schoolgirls with educational scholarships.

A lack of new clothes has hampered the girls' self-confidence so the ladies set about creating dresses out of spare fabric. These were brought from Nottinghamshire to the Soroptimists who have sent the dresses over to the region which is still struggling to recover from the Ebola crisis.

One of the Thames Valley Soroptimists regularly returns to Sierra Leone to work on the project and oversees the delivery items from bedding to school uniforms.

There is still much to be done to help the women and girls of Kori - but at least they will be dressed in style thanks to the ladies of Berkshire and Nottinghamshire.

Bourne End Horticultural Society

On June 16 Paul Green from Greenleaves Nursery will be giving a talk about his favourite plants, with plants on sale.

On July 21 at our summer social evening, bring a posy of flowers from your garden and a plate of food to share with members and visitors.

We are planning a trip to Blenheim Palace Flower Show on Friday June 17 for members and non-members. Details from Nicola Sevenoaks 0168 529873.

A date for your diaries: Autumn Flower Show at Wisley on September 11. Again non-members are most welcome.

For any enquiries about BEHS contact Penny Hampson on 01628 521482.

Wye Valley Volunteers

During the year April 2015 to March 2016 our voluntary drivers made 469 trips taking clients for hospital appointments while 114 trips were made to doctors' surgeries; more than 150 trips were made for other appointments, including podiatrists, dentists and opticians.

On top of this we have a team of 17 home visitors, many of whom visit their clients on a weekly basis, and volunteer teams who run the Luncheon Club, the coffee mornings and the Community Minibus shopping trips, all of which bring much pleasure and social contact to many older clients.

We have what seems like a generous number of volunteers, averaging over a hundred at any one time, but with so much demand we can always do with more. At the moment we are particularly in need of drivers and minibus drivers. Our drivers can say how much or how little they are prepared to drive and can limit the destinations to those they feel comfortable with. So even if you could only offer one or two local journeys a month, they may be just the journeys that nobody else can do.

To learn more about any of our volunteering activities, please contact us on 01628 521027 or call at the Community Volunteer Office (portakabin to the right of the community centre) which is open every weekday from 10am to midday. Similarly do please contact us if you need help from our services.

CALENDAR OF VILLAGE EVENTS

JUNE

- 2 Thurs Community Centre Bar Quiz starts at 8.30 pm. It's a £1 per person, and the winning team gets the quiz takings from the night
- 3 Fri Bingo in the community centre. The fun starts at 2pm
- 4 Sat Food & Craft Fair at Falcon Pub from 10am to 2pm. Childrens' craft activities plus lots on sale including jewellery, cards, crafts, jams & chutneys, cheese, cakes, Forever Living, painted glass, Italian foods, fashions & accessories, gifts and more
- 4 Sat Music at the Manor (Little Marlow). The gardens will be open from 5pm, bring a picnic and listen to music by the Bisham Concert Band and Aca-Holics, a Ladies Barbershop Group. Tickets £12.50 for adults, £5 for children. To book call 07775 957090 or 01628 521793
- 7 Tues CentreJazz: live music from 8pm in the Community Centre bar. Admission £5 includes raffle
- 10 Fri Bingo in the community centre. The fun starts at 2pm
- 11 Sat Bourne End Community Market 10am – 1pm in the library
- 11 Sat Bucks Open Studios run from today until June 26 with local artists opening their studios to show and sell their art and crafts. Look out for the local signs or do to www.bucksopenstudios.org.uk for details
- 12 Sat HM The Queen's birthday celebrations at the community centre. Music, food (barbecue and afternoon tea) from 12.30pm. See poster page 38
- 17 Fri Bingo in the community centre. The fun starts at 2pm
- 17 Fri Social dance with Barbara and David at 8pm. Good dancing in friendly company
- 18 Sat Women's Breakfast at St Peter's Church, Loudwater. From 8.30am to 10am. The speaker is Nichola Neal of Revelation Life Christian Charity. See page 23
- 18 Sat Charity yoga day 10.30am to 12.30am at St Dunstons Church hall, Bourne End. Cost £20 minimum donation. Or go for tea and cakes at 12.35pm. See page 23
- 18 Sat Wooburn Fête on the green from midday to 4pm. Lots of stalls, activities, games and childrens' entertainment plus refreshments. See poster page 10
- 18 Sat Virtuoso Wind Ensemble performing light classical pieces at Cores End United Reformed Church. Tickets £10/£7 for concessions to include light refreshments in the interval. Info and tickets from Helen Rathbone on 07912696658
- 18 Sat The Rocking Sixty's at the community centre 8pm See poster page 38 for details
- 24 Fri Bingo in the community centre. The fun starts at 2pm
- 25 Sat Hedsor Riverside Fair with boat rides, cream teas, tombola, plant, jewellery and ceramics stalls, and children's games. It takes place at Orchard Dene, Riversdale, from midday to 4.30pm. See poster page 11
- 26 Sun St Paul's Church's Teddy Bear Parachute Jump begins at 12.30pm, with a barbecue, refreshments and stalls
- 29 Wed National Garden Scheme open day from 2pm to 5pm at Magnolia House and The Shades, Grange Drive HP10 0QD. Call 01628 525818. Costs £3.50 entrance for the two gardens, children free. Refreshments and plant sales

JULY

- 1 Fri Bingo in the community centre. The fun starts at 2pm
- 2 Sat Bourne End Community Association summer fête from 10am to 2pm at the community centre. Stalls, live music, barbecue and lots more. See page 39 for details.
- 5 Tues CentreJazz: live music from 8pm in the Community Centre bar. Admission £5 includes raffle
- 6 Wed NGS open day from 2pm to 5pm at Magnolia House and The Shades, Grange Drive HP10 0QD. Call 01628 525818. Costs £3.50 entrance for the two gardens, children free. Refreshments and plant sales
- 7 Thurs Community Centre Bar Quiz starts at 8.30 pm. It's a £1 per person, and the winning team gets the quiz takings from the night
- 8 Fri Bingo in the community centre. The fun starts at 2pm
- 9 Sat Bourne End Community Market 10am – 1pm in the library
- 15 Fri Bingo in the community centre. The fun starts at 2pm
- 15 Fri Social dance with Barbara and David at 8pm. Good dancing in friendly company
- 16 Sat And Sunday, open weekend at St Paul's Church, Wooburn Green to celebrate the new church roof. See page 35 for more details
- 17 Sun A walk starting from Gossmore Recreation Ground car park at 3pm and finishing at Cores End URC at 4.30pm for afternoon tea, followed by a short service.
- 22 Fri Bingo in the community centre. The fun starts at 2pm
- 23 Sat Bourne End Community Centre Summer Dance. With music from the Target Band. See page 38 for details
- 29 Fri Bingo in the community centre. The fun starts at 2pm

The next issue of Target will cover August and September. Email editor@targetmagazine.org.uk by Monday July 4 to get your event included in the calendar. The magazine will be published on Friday July 29.

Please call into the centre and pay for your copy of Target

Target Quiz

Sponsored by The Falcon Pub, Wooburn Moor

Number 92

This time Penny Walsh has come up with a 'hotch-potch' of questions intended to challenge your general knowledge. Some will certainly test those little grey cells so take a break and get started.

Write your answers on an envelope, add your name and address, include £1 entry fee then take it into the community centre for a chance to win Penny's mystery prize. All money raised goes to the community centre.

- 1 Who was the first Astronomer Royal?
- 2 What is used to make pewter?
- 3 Who is the greek goddess of the dawn?
- 4 What is the capital of Armenia?
- 5 Who wrote the Mr Men and Miss books?
- 6 Who was the king of the fairies in folklore?
- 7 What is a group of eight called?
- 8 Naval town in Devon?
- 9 Name a large predatory freshwater fish?
- 10 What is a case for arrows called?
- 11 What is the capital of Peru?
- 12 What is quicksilver?
- 13 Name the capital of Iceland?
- 14 What herb is for remembrance?
- 15 What is another name for lilac?
- 16 What is a saltire?
- 17 Name of King of Israel endowed with great wisdom?
- 18 How many people were going to St Ives?
- 19 Name the special coating on frying pans?
- 20 What is the capital of Albania?

ANSWERS TO QUIZ 91

1 Arthur Ransome 2 R D Blackmore 3 Baroness Orczy 4 Agatha Christie 5 Louisa May Alcott 6 Boris Pasternak 7 Herman Melville 8 Thomas Hardy 9 Charles Kingsley 10 Charles Dickens 11 Ian Fleming 12 Conan Doyle 13 R L Stevenson 14 Captain Marryat 15 Charlotte Bronte 16 George Orwell 17 Daniel Defoe 18 Alexander Dumas 19 Tennessee Williams 20 John Steinbeck
The winner is Michael Roe, Cressington Place, Bourne End

The closing date is Monday 4 July



The Falcon Pub

Watery Lane,
Wooburn Moor, HP10 0NE

Tel: 01628 522752

Garden Glastonbury

24th and 25th June

Didn't get tickets?

No worries we are showing it!

On the Friday and Saturday in the
beer garden and tent.

Festival food, ciders, hay bales but
hopefully no mud!



Beer Festival

8th -10th July



Loads of different ales and ciders
Music Friday and Saturday evening
from 8.30pm

Fun and games on Saturday
afternoon

Big Charity Raffle in aid of the
Air Ambulance



Quickstep



Top quality shoe repairs by experienced craftsmen

Key cutting, engraving

Sports trophies, corporate awards & gifts

Watch repairs, batteries & straps

Digital photo printing, passport & ID photos

Mobile phone accessories

Agents for dry cleaning, mobile phone, tablet & computer repairs



71 The Parade, Bourne End, Bucks SL8 5SB Tel: 01628 524653

Email: quickstepengraving@hotmail.com

10%

DISCOUNT WITH THIS VOUCHER AT QUICKSTEP BOURNE END
ON SHOE REPAIRS, KEY CUTTING & ENGRAVING Valid until 31.07.2017