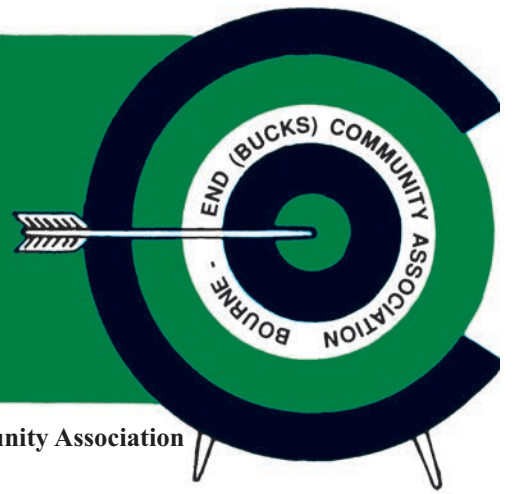


target



VOL.52 No2

APR/MAY 2016 £1 *Suggested price*

The Journal of Bourne End (Bucks) Community Association

Trading places...

Closures and changes on The Parade in Bourne End

Bourne End residents who have been raising their concerns over the number of empty shops on The Parade will have been further disappointed to learn one of the village's supermarkets will be closing down on April 9.

A spokesperson for The Co-operative Food Head Office told *Target*: "We can confirm that our store on The Parade will close on April 9, due to the expiration of the lease.

"The decision to close was taken with the greatest reluctance and was not, in any way, a reflection on the commitment and hard work of the store team. We would like to thank our shoppers for their valued custom over the years."

However many readers probably suspected it was only a matter of time before we lost one of the Co-Op stores following their takeover of Somerfield's in Wakeman Road in 2009.

Sainsbury's Local was due to open within the McCarthy & Stone development, Blyton House, this Summer. But they pulled out and, on going to press, we had not heard what was going in their place although we have been told "negotiations are underway" with another retailer.

Meanwhile the former Nat West Bank still sits empty and forgotten and other recent changes include the closure of the ladies' dress shop Pizazz in February.

Further along The Parade dress shop Breeze continues to operate, but their premises are available. Owner Linda Shelford told us that she needs to think about retirement and has been trying to find a tenant for her double-fronted shop premises. "There's great enthusiasm for Bourne End from the



Refurb at the post office

Furlong Road Post Office's Zak Hussain (left) is pictured shaking hands with Kevin Parker at the new look premises.

Kevin's Bourne End company, Space Pod, refurbished the post office in March giving Zak the chance to introduce a W H Smith Local into the retail side of the store. The changes took place over a two-week closure.

Both Zak and Kevin are delighted that Furlong Road now has an up-to-the-minute post office with greatly improved retail space. "It's a huge improvement," Zak commented, while Kevin was pleased that the work went well "in spite of finding all sorts of old fittings and fixtures along the way".

huge number of people who came to look around" she told *Target*, "but there's a long way between loving what you see and signing on the dotted line. I continue to be hopeful, but saddened to see so many changes on The Parade."

The very popular Darlings restaurant closed in 2015 to be replaced by Savoury East. This little restaurant opened to some very excited Twitter and Facebook comments about their authentic Sichuanese cuisine. But it closed after only a couple of months, allegedly over a leasing issue.

We are set to have a new coffee shop and deli sandwich bar in place of the boarded-up Beauty Secrets. Coopers, who own Riverlight restaurant in the marina, are to open Coopers Tuckshop here "soon" offering home baked cakes, coffee, savories and more.

Another piece of good news is that Bourne End Jewellers have taken on the former Hawkinsport store and are expanding their business (see page 25). However their old premises will become another empty shop.

Tony Wright of Bourne End Cards & Gifts summed up the situation saying: "It's important to have a good range of shops here. This encourages customers to travel from outside the area.

Hawkinsport moving out of the village has reduced our customers by around ten percent. And

recently we have had a few Bourne End offices closing down or making redundancies which again reduces our customer base.

"But most importantly, the support of local residents is vital. We have an amazingly loyal customer base, but when we're around in the village we see many potential customers who obviously live locally, but never come into our shop.

"We've had to find other ways to attract more customers, like posting on Facebook and running competitions."

The solution to avoiding more shop closures in the future is clearly to give them our support by shopping locally.

Hopefully residents in the new homes and retirement flats being built around the village will help keep local shops thriving.

Remember you use it or lose it!



Thank you!

Target's editorial team, Editor Debra Aspinall and Managing Editor Barrie Penfold, held a coffee morning in February to thank all the regular contributors to *Target* magazine. The group pictured here supply reports on clubs, groups, churches and organisations which are at the heart of the village and we couldn't do a community magazine without them. THANK YOU!

We'd also like to take this opportunity to thank all those readers who have recently nipped into the community centre to pay for their *Target* magazines and those who have set up a standing order to cover the £1 per issue cost (£6 a year). If you would like to do the same, just ask at the centre office.



KIDS!
Design a Bourne End mug
Page 12

target



Target magazine is published by Bourne End (Bucks) Community Association and distributed free to over 5,000 homes in the local area. The distribution network includes Bourne End and Wooburn Green as well as the outlying hamlets of Hedsor, Well End, Little Marlow, Cores End, Upper Bourne End, Wooburn Common and Wooburn Moor.

Bourne End (Bucks) Community Association

The Centre, Wakeman Road, Bourne End, Bucks SL8 5SX
Telephone: 01628 522604
Office Hours: Mon - Fri 9am to 4pm
Senior Administrator: Sue Ambrose

Visit: www.bourneendbucks.com
for current information or email
office@bebca.org.uk

Editor

Debra Aspinall
Tel: 07881 558027
editor@targetmagazine.org.uk

Managing Editor & Distribution

Barrie Penfold
Tel: 01628 525415
email: managingeditor@targetmagazine.org.uk

Advertising & Production

Barrie Penfold
Tel: 01628 525415
advertising@targetmagazine.org.uk
Our advertising rate card is on www.bourneendbucks.com. Click on Community Association, then Target.

Proofreading Christina Martell and Meriel Riseley

Printers

Gpex, Pinstone Way,
Gerrards Cross SL9 7BJ
Telephone: 01753 887450



All material appearing in Target is the copyright of Bourne End (Bucks) Community Association. The Editor reserves the right to select letters and reports for publication and to edit for grammar, style and length.

BULL'S EYE

Regular readers will already know about Janet Binns, vicar of St Mark's and St Nicholas' churches, whom we dubbed The Running Reverend for her sterling fund-raising efforts running marathons. Recently Janet has been in marathon-training mode again, but not for fund-raising purposes.

She explains: "Having completed the Dublin marathon there was always going to be another marathon on the horizon and this time it's Paris.

"It was while on a short visit last September that the idea came to mind, and I wasted no time submitting my application there and then.

"Then came the atrocity in the Paris attacks in November when 128 people lost their lives. Of course it was scary knowing I would be going to Paris to run the marathon six months later.

"The resounding voice of determination that came through those terrible few days was one of defiance, the terrorist must not win. The Paris marathon is a big event and I can imagine will attract a very large media attention.

"And so what better way to stand alongside the Parisians than running a marathon in one of the most beautiful cities in the world.

"So on April 3 I will put on my trainers to run with 57,000 runners declaring in the words of one French football fan evacuated from the State de France on the night of the attack 'Freedom stands up for itself ... in the face of terrorism'."

And now, in the words of Monty Python, for something completely different...



HELP THE ANIMALS

On an annual trip to the vets with my cat, Macy, for her booster shot, I bumped into Patricia Heyland, whose family run Heyland Boats down on Bourne End Marina.

She had just adopted two adorable cats — Tinkerbelle and Alfie — from an animal sanctuary near Dorney and was telling me how the charitable sanctuary cared for all sorts of animals and would greatly benefit from some donations of food, blankets and other items.

Patricia has agreed to collect your donations for the sanctuary and you can leave boxes or bags (clearly marked for the sanctuary) at Heyland Boats on the marina or drop them off in Dorney. See their website www.theanimalsanctuaryuk.org.uk which has a map of the sanctuary's location.

Tina Stacey from the sanctuary told Target: "Our website and Facebook page describe the options and links for donating. Alternatively use bank account: Barclays 20-97-09 03503712 for a direct donation."

You can also sponsor an animal which helps with running costs and makes for an unusual gift. Tina added: "We also always require donations of animal feed especially corn, rabbit food, pig food, sheep and goat feed along with cleaning products or crazy stuff like bales of hay /straw/ haylige - rabbit teeth blocks etc. And we also take in donations of unwanted clothes and foreign coins."

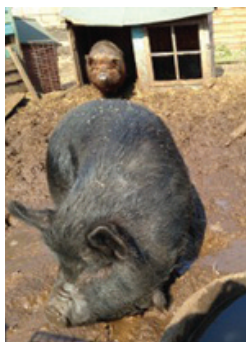
Anyone who wants to help more directly can volunteer to help at the sanctuary. A new volunteers induction day is to be announced soon on their website.

At present they have more than 30 rabbits of varying ages ready for re homing 10 cats, two pigs and some companion horses all ready and able to go to a forever home. They are also in need of foster homes from time to time.

You can help in other ways too. Raffle prizes are gladly accepted and if anyone would like a collection tin to put in their shop or business these are available.

Shelley at jouellejewellery@btinternet.com (07772011456) is the sanctuary's new fund raiser co-ordinator and can give you more information or contact Claire Swift who is a valued volunteer there swift7@hotmail.co.uk

Debra Aspinall, Editor



ABOUT TARGET

Target magazine was launched in 1964 to provide information about the new Bourne End Community Association, with the name referring to the money required to build a new community centre. Over the years the magazine has grown, and its distribution area has been extended as the population has expanded through Bourne End, Wooburn Green and the surrounding villages.

Bourne End Community Association was formed in 1962 by local people who wanted a social centre to meet the needs of a growing community. Fund raising and determination saw the community centre open in Wakeman Road on 28 October 1967. Another hall was added a few years later and constant improvements have been made over the years.

See pages 36-39 for more information on the facilities and activities available at the community centre.



Pictured below is residents' association committee member, Mike Ware, presenting the latest bound volumes of *Target* to the library.

We must explain that in early 1980 the newly-formed Bourne End Residents' Association's chairman, Brian Wheals, suggested that all issues of *Target* magazine should be preserved. Volume 1 No 1 Spring 1965 and all subsequent issues were found and, with help from Brian's wife Ann, were bound into books and then presented to the library's reference section.

Over the years, still with help from Ann Wheals, we



have continued with this initiative. I am positive that Brian, sadly no longer with us, would be delighted that the tradition continues.

What always strikes me when looking at early copies from 50 years ago is how fantastically the magazine has evolved to embrace all the advantages that modern design and printing can achieve. We can all be pleased and proud that this historic record of local life will be available for future generations.

Coming right up to date a few words on Slate Meadow and its proposed development. Again I must stress that these views are mine and mine alone.

A consultation has been carried out by Wycombe District Council on the impact developing the five released reserved sites would have on the infrastructure.

Infrastructure is the overall expression used to describe the way development will affect the roads, schools, healthcare, open spaces, community facilities and the provision of utilities.

Along with others we produced a response which clearly states that ANY development of Slate Meadow would have a serious impact on these already overloaded local infrastructure issues. There is no room. The area is already full up. How can Cores End Road be widened? Look at Slate Meadow on YouTube: Slate Meadow - the final view.

Also interesting is the absence of a Development Brief for Slate Meadow. I am told that all the other reserve sites have already produced their development briefs.

A development brief is a site-specific document that is produced to focus on

planning issues. The local authority, in this case WDC, set out the constraints and characteristics of a particular site to make the developers aware of these issues.

Then it is down to the developer to find a way to overcome these issues.

Why the development brief for Slate Meadow is so far behind the others is among items for discussion with the relevant council officers.

My belief is that the constraints with flooding, traffic and schools at the top of the list is proving to be difficult to overcome.

Finally, the McCarthy & Stone later living apartments move ever closer to completion.

Although Sainsbury's have pulled out I am told that another retailer is in discussion with a view to taking over the space within the development. An announcement is awaited with interest.

Looking at the near-finished building I am sure it will add to the mix that is the architectural design of The Parade in Bourne End.

In my opinion it is a shame that the apartments and houses being built on the old Firefly site seem at odds with, rather than enhancing, an historic corner of the village.

Once again, thank you for taking the time to read this article and if you have any thoughts or questions please feel free to give me a ring.

Jim Penfold
01628 525415

**Public Inquiry into the bridleway from
Cores End Road to Wooburn Green
reconvenes on
Tuesday May 10
at 10am in the library.
Please try to attend.**

**MARTIN
VEHICLE SERVICING
ADAMS**

YOUR LOCAL MOT SPECIALIST

A friendly family run business with
30 years experience

Servicing all cars, new and old also light
commercial vehicles.



- General car repairs and maintenance
- Free courtesy car available
- Tyres, exhausts and batteries supplied and fitted
- Latest diagnostic equipment for all makes of vehicle
- Air conditioning service available
- 30 Years Experience



01628 850000

email: info@mavs.co.uk

Alexander House, Wessex Industrial Estate, Bourne End



Support local shops and businesses

Claytons put safety and exercise firmly on the agenda

Claytons School reports on their essential road safety training for pupils, how volunteers are needed to help with Footsteps training and why pupils and parents are taking to two wheels...

Lambs, flowers and green leaves all herald Spring. At Claytons Primary School we can add the sight of Year 1 and Year 2 pupils clad in hi-vis jackets practising their road safety up and down Wendover Road to the signs of the season.

At Claytons we participate in the Footsteps programme to ensure that our pupils have the skills and confidence to be safe around roads.

Footsteps is sponsored by Bucks CC and focuses on the road safety basics with our six and seven year old pupils. The children are incredibly keen and focused, each receiving a certificate at the end of successful training sessions (see picture right).

Trained volunteers take the children out to learn and practise. You may well see the pupils using the zebra crossing on Marlow Road – the key here is to make sure that traffic coming both ways has stopped before you cross.

Footsteps is a very rewarding voluntary experience as our pupils are so keen and we are teaching real, useful skills.

The Footsteps training is part of Claytons School Travel Plan which promotes our pupils' walking, scooting, cycling to and from school (see below).

We would love to have more volunteers to help us give our pupils this essential life skill – are you free on five weekday afternoons, 2pm to 3pm in May and June? Your only requirement is to attend a 90-minute training session (held locally at the beginning of May). Find out more from Claytons' Footsteps co-ordinator, Helen Fisher 07986 565191.



Claytons School is encouraging pupils to jump on their bikes and scooters for **The Big Pedal**, April 18 to 29. This is a national challenge organised by the charity Sustrans which aims to get more children active.

Claytons actively runs a School Travel Plan with the aim of increasing the number of children who walk, bike and scooter to school for their own health and happiness. This also has a significant effect on reducing traffic congestion through Bourne End especially in the morning rush-hour. We firmly believe that when our children are walking, scooting and cycling to and from school they become more environmentally and community-aware.

Parents and teachers are included in The Big Pedal which will be a great opportunity for the grown-ups to re-discover the cycling fun and freedom we enjoyed in our youth. Every day we'll be recording all the journeys made to Claytons by bike and scooter and if we have the highest percentage of bike and scooter journeys among local schools we will be in line to win some great prizes and kudos.

Our supportive local police team have volunteered to steward a Big Pedal peloton one morning. We will be offering free advice on basic bike maintenance and will lead a return ride on the National Cycle Network from Maidenhead to Windsor.



Beginners & Intermediates Woodworking Classes



Next classes start 4th & 6th April
01628 290 770
www.thewooburncraftschool.com

Bourne End Home Security Systems Ltd.

DOMESTIC AND COMMERCIAL

INTRUDER ALARMS

CCTV

INTERCOMS

SECURITY LIGHTING

FIRE ALARMS

- Local privately owned company
- SSAIB insurance approved
- Audible and monitored systems
- No binding contracts
- Existing systems maintained and repaired
- 20 years experience
- NACOSS NSI Gold monitoring

Your *local* security expert

For a FREE survey, contact us today!

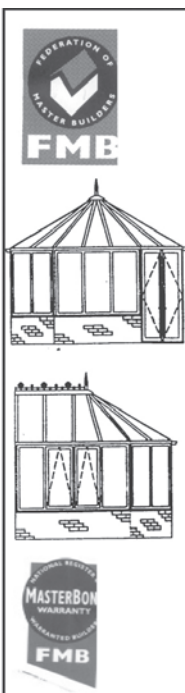


01628 520162

rogerelam@behss.co.uk

www.behss.co.uk

8a The Courtyard
Furlong Road
Bourne End
SL8 5AU



CHATTELWORTH LIMITED

CW

CONSTRUCTION

All aspects of general building works:

*Extensions/Alterations *Renovations *Carpentry/Joinery
*Brickwork/Paving *Plastering *Commercial & Domestic

FULL DECORATING SERVICES

*Painting *Internal/External *Wallpapering *Commercial & Domestic

GENERAL

*Roofing/Slating/Felting *General Maintenance

PURPOSE MADE JOINERY

*All aspects of purpose-made joinery from our own in-house workshop

MONARCH windows, doors & conservatories
also *Plastic Fascia *Barge Boards & Cladding *Guttering

A first class service at very competitive prices, call now for a no obligation quotation

*A members of the Federation of Master Builders and
FMB (Masterbond) Warranty Scheme*

Chattelworth Works,
95a Queens Road,
High Wycombe, Bucks HP13 6AH

Tel/Fax 01494 461544

saxons



2 Furlong Road
Bourne End
Bucks
SL8 5DG

Come and visit our London trained professional stylists working to the highest standards

Whether you require advice on cutting or colour techniques

Saxons is the salon to be seen at!

Open Monday – Saturday

9am – Late (by request)

Saxons welcomes your call

01628 524255

A. Stride



**Heating & Plumbing
Roofing
General Building
Painting & Decorating
Replastering & Guttering
Service**

Estimates Given Free

Telephone: 01494 440219

Mobile 07973 439781



THE WALNUT TREE

HEDSOR ROAD, BOURNE END, SL8 5DN

Tel: 01628 532417

www.walnuttreebourneend.co.uk

NEW

**FIRST FLOOR
PRIVATE DINING & MEETING ROOM**

**PIZZA & PASTA THURSDAYS
6PM – 9PM**

**TAPAS TUESDAYS
6PM – 9PM**

GARDEN & PLAY AREA

OFFERING PUB FAVOURITES
TRADITIONAL SUNDAY ROASTS &
BOARD SPECIALS
ALL FRESHLY PREPARED

**DOGS & MUDDY BOOTS VERY
WELCOME!**

**HUGHES
BUILDERS MERCHANTS**

**CALL IN FOR A FRIENDLY, PERSONAL
AND LOCAL SERVICE**

**BRICKS, DIY SUPPLIES, BLOCKS,
AGGREGATES, PAVING SLABS,
TIMBER, CALOR GAS, PAINT,
SALT and COAL**

01628 522022

24 Whitepit Lane, Flackwell Heath, Bucks.

11 PLUS TUITION

For the New 11+ Test

**Experienced primary teachers in
Bourne End**

01628 528455 / 299856

www.11plusacademy.com

**For Hire - Two Halls
& kitchen facilities**

**Ideal for children's parties; aerobics;
dancing; ballet classes; meetings, etc.**

Contact Ann 01628 526865

or Muriel 01628 523622

Ample parking @ Cores End Church

ABSOLUTE CLEANING

**Windows & Gutters
Domestic & Commercial**

Ring Mark Holt

0791 2985500



Another Answer

Books and Accounts

Efficient, Friendly and Local

TEL: 01628 530805

EMAIL: sylvia@anotheranswer.co.uk

First Floor, Bourne House,
Cores End Road, Bourne End SL8 5AR

www.anotheranswer.co.uk



Sylvia Boothill is licensed and regulated by AAT under licence number 8876



BOOKKEEPING • PAYROLL • VAT • TAX RETURNS • ACCOUNTS

We'll open it now!
SECURE HOMES 30 MINUTE RESPONSE
UPVC LOCK SPECIALISTS

- UPVC
- CHUBB
- YALE
- UNION
- ERA
- LEGGE
- ASEC
- VIRO
- ABLOY
- CISA
- ASSA

**All Domestic & Commercial Lock Problems
Solved by your Trusted & Reliable Family Business**

• POLICE RECOMMENDED AND INSURANCE APPROVED LOCKS SUPPLIED & FITTED

• ALL TYPES OF DOOR & WINDOW LOCKS FITTED, OPENED, REPLACED & REPAIRED



01628 528433

Or if line busy: MOBILE



07831 487222



www.allsecurehomes.co.uk

10 Thames Close, Bourne End Bucks SL8 5QJ

FREE Advice, Surveys & Estimates



Chubb Locks Yale GE GE UNION



We will give you a competitive FULL QUOTE before we start any locksmith work

TALK TO A LOCAL LOCKSMITH ... not a Call Centre!



**Arnold
Funeral
Service**

21-23 Little Marlow Road **Marlow**
01628 898866

891 London Road, **High Wycombe**
01494 472572

- Traditional and Alternative Funerals
- 24 Hour Attendance
- Pre-Payment Plan



www.arnold-funerals.co.uk

Please support Target advertisers



Marina Life with Peter Osborne



I would like to begin with a 'thank you' to the three thugs who broke into our office at 3am recently. It was most thoughtful of you to steal a charity box off my desk as I now have more space and it looks a lot tidier.

I'm sorry you didn't get what you were after, but if you had visited during normal opening hours I would have willingly passed Matty and Chaos over to you. I have no idea why you thought they would be in the office at that hour. Anyway the police have a lovely video of the three of you, you can always contact them if you would like a copy.

When the SOCO came along he could identify your trainers just by looking at the prints, I learned a lot about these matters from him. I am hoping that these criminals will be caught, but just a word of advice; if you put your three brains together you may have a brain cell between you, use this cell wisely and you may be more successful in future.

The tug has undertaken another rescue mission. This time we started receiving the calls mid-afternoon one Sunday and the phone went mad. People were calling to say that there was a pontoon floating downstream heading for the marina.

It sounded odd but, as we only have one person on duty on winter weekends, a call was made to find a wingman to assist. Once one was found in the form of Alan Sykes the tug was once again launched within five minutes with its lights flashing in the semi-darkness.

We were greeted about half a mile upstream by a 60ft floating pontoon with eight rowing coaching boats attached drifting towards the marina. The immediate tasks were to attach a tow and ensure that the structure and accompanying boats did not collide with our boats moored in the marina.

A tow was attached and we turned around to proceed downstream, past the marina, without mishap. On turning below the marina to bring the tow upstream to our pontoon, we made no forward movement at all; additional power was applied and 'hey presto' the tow broke by the mooring ring attached to the pontoon and became detached from the pontoon..

We managed to re-secure the tow with assistance from Damien Wright in the Bounty boat and landed her in the marina, on the way one boat capsized, but it remained attached to the pontoon.

This rescue was carried out under the scrutiny of many sightseers; fortunately it was a happy ending although I was disappointed at how little was collected when the cap was passed around the crowds.



This winter has been wet and mild. One of the side effects of this is the number of rats we have had to contend with, I trust you understand that I'm not talking about the marina boys, an easy mistake to make I know. In my time at the marina this would appear to be the worst in terms of the size of the rat population, we have spent time and money combatting them and eventually the war has been won, but we are constantly baiting them to ensure they are kept in check.

It was getting a bit much when you opened a bin and those that didn't jump out just stared at you. Joking apart, some of the customers were not too amused, but rats and water sort of go together and as they saw action was being taken by us, and once we explained the facts of life to them, they were more understanding.

If the rats come back we will unleash Rocky and see if he has any instinct to go after them, he is 25% terrier so maybe? The only downside is the rats could be bigger than him, but it's worth a try.

The crane has been sick, while lifting a boat it refused to slew (turn) round and the fault

could not be found. Need I say that Matty was using the crane before me and is therefore taking the blame for breaking it.

A doctor was called and he found that the slew gearbox (sounds technical) needed to go to hospital for a rebuild. As this weighed over a third of a ton another crane was summoned to lift it out. The procedure went to plan and off to 'hospital' in Peterborough it went.

By the time you are reading this missive I very much hope the crane will be back to normal. It was built in 1983 and so the actual gearbox is now obsolete, but there are still spares available, apparently. Interestingly enough Matty and I are older than the crane, does that make us obsolete? I am often asked what the crane will lift, it can lift many things, but mostly we lift boats.

We have a high workload at this time of year as boats are being readied for the season so it is somewhat inconvenient to have lost the use of the crane. I hope we can negate having to hire in a crane. However we manage this hiccup I'm sure it will involve a couple of beers over 'planning' sessions. Do you find it strange that often the best ideas surface after a beer or two?

Come April 1 we are in summer mode and our official hours extend to 8am to 6pm each and every day through to the end of September. A Saturday boy is employed and all annual leave is cancelled. The freezer is being loaded up with ice creams, the fridge with soft drinks and the Bounty will be open. The Calor gas for the barbecues is being delivered, the diesel tank is being filled up - let the party begin.

I get quite excited at this time of year. The boys don't, as they know they are actually going to have to do some work for a change. The hotter the weather the greater the revenue, so let's hope for a great season this year (actually we don't need it too busy it's sometimes good to have a rest).

Until the next time.

Peter Osborne, Marina Manager

Classic Beauty

for

Beauty treatment from fully qualified and caring therapists

Using top quality products from Pridara Skin care, Caci non surgical facial and body treatment

Jessica manicure and pedicure

The unique and hygienic Phd waxing system

Open 9am until 8pm most nights

17a Soho Mill, Wooburn Green Tel: 01628 850688

HOME PC HELP

- All PC/networking problems
- No callout charge
- No fix - no fee
- 35+ yrs experience

For friendly, personal advice call

01628 630096

or 0778811 3279

(7 days inc evenings)

www.homepchehelp.org

Colin's Garden Services

Tel: 07884 262871

Garden

Grass Cutting
Maintenance
Patios

Hedge Cutting
Fencing
Turving

Services

Platinum wedding anniversary

For Charlie and Barbara Darby



A 70th wedding anniversary is a rare and remarkable event. One local couple will reach and celebrate that landmark this month!

Charlie Darby was born in Flackwell Heath while Barbara's family moved from Wales to a house at the top of Blind Lane when she was a toddler. Their romance started in the Temperance Hall in

Flackwell Heath and they were married on April 27, 1946 in Wooburn Church. Charlie was 22 and Barbara 19. Like most young couples in those days after the end of the Second World War they moved in with Barbara's parents.

Like most people in those days, Barbara left school at 14. She got a job in Loudwater with a firm making aircraft navigation equipment.

From school Charlie had a job at Ford's Mill in Loudwater making blotting paper, but then the pressures of wartime meant he needed to do war work. He joined Broome and Wade and worked on dismantling tanks. "I can remember that each tank had 13 wheels and I was in a team of three constantly unscrewing the huge nuts. It was six days a week and both day and night shifts". At 19 he volunteered for the Air Force, passed all the tests and was enlisted in September 1943.

Charlie doesn't say too much about his four years in Bomber Command. As part of a crew of seven he was the rear gunner. At over six foot tall Charlie had to bend almost double to get into his seat and his head touched the roof. He was definitely tail-end Charlie as the dictionary explanation describes a member of the crew of a military aircraft who operates a gun from a compartment at the rear.

Charlie is a great supporter of the International Bomber Command Centre in Lincolnshire and he has provided a recording of memories for their archive.

Barbara smiles as he says that during their married life his list of activities have made her a football, golf, darts, billiards and a British Legion widow.

After the war Charlie joined Hoovers in Lincoln Road and stayed with them for 20 years until the factory closed. After a move back to Broome and Wade, he made the decision to become his own boss. He worked as a painter and decorator until his retirement. They had moved back into Barbara's family home in Blind Lane as her parents needed help. After daughter Marilyn was born Barbara worked at Wilks Stores in Flackwell Heath and later managed Lees Bakery on The Parade in Bourne End. They haven't moved far as their home is now an annexe on Marilyn and her husband Tony's cottage in Blind Lane.

At 89 Barbara appreciates that they have been so blessed: "You have your disagreements," she admits, "but you sort them out. Seventy years sounds a lot but it really doesn't seem that long." This makes them both laugh. Perhaps laughing together is the secret to a long and happy marriage.

Our photo shows the couple at their grandson's wedding in the chapel at the Palace of Westminster with the reception in Speaker's House

Back to black (or grey)

Featured in the last issue of Target (February/March) Sally Scagell's talk for the Bucks Family History Society in the small hall was a fascinating evening with ladies in mourning dressed for the occasion.

But don't worry if you missed it, in May Sally will be doing it all again, with her ladies in mourning dresses, at High Wycombe Library where anyone can go along and find out how ladies in mourning were the eventual inspiration for the modern style LBD (little black dress).

Hosted by Friends of High Wycombe Library for Wycombe Arts Festival, Sally, from Flackwell Heath, will be bringing the past to life again and exploring the lives and deaths of one Wycombe chair-making family through 100 years (and more) of mourning fashions.

A Dress to Die For is on Wednesday May 4 at 2pm in High Wycombe Library in Eden Place. Entry is £3 payable on the door.



There is a wonderful selection of mouth-watering dishes on the comprehensive menu at The Last Viceroy.

They include coconut lamb, apricot lamb and cashew nut chicken alongside starters, specialities, traditional Balti, Tandoori and Biryani dishes as well as delicious seafood and vegetarian choices. The friendly and attentive staff will advise you if you are unsure about any dishes on the extensive and varied menu.

You can opt for the Khas-e-Viceroy at £24.95 per person where the chef will prepare a mixed starter, main dishes and side dishes with rice and bread. Or choose the chef's special dishes which are cooked with fresh ground spices and prepared by a slow cooking method to bring out the delicious flavours; six hours' notice is required for these meals.

The restaurant is well-established, having opened 28 years ago. Its cuisine attracts regulars and newcomers alike and its striking interior is divided by floor-to-ceiling pillars, making The Last Viceroy an ideal venue for a cosy dinner for couples or large parties. Open for lunch, dinner and take-aways seven days a week.



74 The Parade, Bourne End SL8 5SS

01628 531383 / 530798

www.thelastviceroy.co.uk



Annual Parish Meeting

This year's Annual Parish Meeting will be held on Tuesday May 10 in St Mary's Church Hall in Glory Mill Lane, Wooburn Green. The meeting starts at 7.30pm and refreshments will be available before the meeting begins. Parking is available on site.

The Annual Parish Meeting gives the chairman and committee chairmen the chance to tell you what the parish council have achieved during the past year and for the general public to ask any questions concerning the parish. The agenda has no specific items on it for discussion which gives residents the chance to speak up about things that they have noticed or which concern them. Answers to questions may not always be available at the meeting, but will be noted and answered when the information has been found.

Certificates will also be awarded to the winners of the best kept allotment at Peggs allotment site off New Road and Wooburn allotment site off Brookfield Road.

Everyone is welcome and we look forward to seeing you there.

Repairs to play equipment surfaces

Following on-site meetings it was decided that some of the surfacing under certain pieces of play equipment in Watery Lane, Wooburn Park and Bourne End Recreation Ground were in need of some attention.

The Open Spaces Committee approved the quote to repair/replace certain areas and the

work began late last year. Unfortunately the rain set in and the work has not yet been completed and the soggy ground has left some of the repaired surfaces looking less than perfect.

We have asked our installer to rectify this and as soon as the weather settles down and the ground has firmed up the remedial work will be done. We thank you for your patience during this time especially in Bourne End Rec where barriers have been erected around the new equipment putting it out of use for the time being.

Wooburn Park paddling pool

Remedial work to the paddling pool in Wooburn Park is now complete and there has been a vast improvement to what was a very tired looking area. The fence in the river has been repaired and boulders added to stop the bank eroding. Stepping stones have also been added across the pool for a more attractive look. The regraded banks will be seeded and the benches will be replaced in due course.

The Queen's 90th birthday celebrations

On Thursday April 21 Her Majesty The Queen celebrates her 90th birthday and the parish council along with other parish, town and county councils have been asked to light our parish beacon in Sappers Field as part of a countrywide celebration.

We have been given the lighting up time of 7.30pm and we would love you to come along

and celebrate with us. Refreshments will be available to purchase during the event. The parish council's name will be on a special list along with other participating councils and presented to HM the Queen after the event.

Directional arrow signs will be placed at points on the nearby roads for those not sure of the location of Sappers Field.

Build a box event

The "Build a Box" event on Sunday February 14 was very well attended and approximately 60 bird boxes were built. Although the event was aimed at children, parents put their DIY skills to the test and helped knock nails in when required. The weather behaved and everyone enjoyed themselves. The boxes have been put up in the areas where the children who built them live and with luck they will all be inhabited before long (see page 10).

Meeting Dates 2016:

Annual Parish Meeting Tuesday May 10 (details left)

Full Council: April 26 and May 24.

Annual Meeting : May 24 (takes place directly before Full Council Meeting).

Open Spaces, Allotments & Burials: April 5 and May 3.

Planning, Highways & Lighting: April 13, May 4 & 25.

F&GP: April 12.

All meetings start at 7.30pm

Normal Parish Council Office opening hours are from 9am to 5pm each day. Please call 01628 522827 if you have any queries, alternatively email the office at clerk@wooburnparish.gov.uk or visit our website for information on www.wooburnparish.gov.uk

WOOBURN PARK LAWN TENNIS CLUB

Four floodlit,
artificial grass courts and
new clubhouse.

Senior, junior, mid-week and
family membership options.

For more information email
wpltc@sky.com or visit
www.wpltc.org.uk



Bed and Breakfast

THE OLD COTTAGE
HEDSOR ROAD
BOURNE END
SL8 5EE

www.theoldcottagebourneend.co.uk

Tel: 01628 521348

Mobile: 07796 938369

stacey@theoldcottagebourneend.co.uk

Sick PC ?

Misbehaving Laptop?

Visiting support for your
Computer problems.
'Silver-Surfer' & Saga
generation,
assistance & tutorials.

Jonathan - 01628 486712

www.ComputaSolv.co.uk

"Fixing your computer
problems"



HAND MADE FURNITURE

Architectural woodwork,
furniture, antique
restoration, panelling,
staircases, gilding,
lettering,
woodcarving,
churchwork,
sculpture, interior design
and free advice.

LILLYFEE WOODCARVING STUDIO

Lillyfee Farm Lane, Wooburn Common,
Bucks HP10 0LL
Tel: 01494 671690

Studio open for visits by appointment

WOODCARVING COURSES

Take a new direction and create beauty
under the guidance of experts. Call the
number above for dates and details.



Visit our friendly and professional hair salon in Flackwell Heath for quality hairdressing where Maria and the team will be pleased to welcome you.

Mitzi's hairdressing
01628 524316



Raising the standard in domestic cleaning

- * Regular cleaning, weekly, bi-weekly or monthly
- * End of tenancy cleans
- * Spring cleans
- * Quality, vetted staff with smart uniforms
- * 1st class oven and carpet cleaning service

Call Jenny or Chris on
01628 521497

www.casa-fresco-cleaning.co.uk

Cliveden:

350 years of History

A talk by

Maggie Blakeslee

Hear about its inhabitants and visitors; famous and infamous!

Wednesday April 13th

7:00pm

St Marks Church
Station Road,
Bourne End

Tickets £10 to include a glass of wine
For tickets please call 01628 810590
or email cottrelljane@hotmail.com



Aztec heating and plumbing

Repairs to all Gas Boilers & Servicing Contracts

Also General Plumbing Repairs

Central Heating, Pumps, Valves, Timers & Programmers

Tel: (01494) 440219 home

Tel: 07973 439781 mobile

Tel: 07831 563477 mobile

SAMSON WINDOWS & DOORS

Designed to look good for a very long time



www.samsonwindows.co.uk

Tel: 01628 524469

We have been in continuous trading within the local community for over 25 years. We supply and install a range of market leading windows and doors manufactured to exacting standards of quality and performance and installed to the highest levels of finish and workmanship. More than 76% of our work is secured by referral and recommendation.

We do not believe in the hard sell, nor do we offer discounts for quick decisions. Our quotation is offered without obligation and discussed without insulting your intelligence. You will find it extremely competitive.



- o A Rated PVCu windows and doors
- o Timber alternative woodgrain windows
- o Authentic style sliding sash windows
- o Composite entrance doors



AS GOOD AS NEW

Mobile Bodywork Repairs



DAMAGED YOUR CAR?
Scuffs, Scratches & Dents

Call Malcolm now for a free quotation!

Office: 01628 532586 Mobile: 07786 482262

Bourne End Cards & Gifts

in this shop we do....

two legs **FOUR LEGS** waggy tails **MUDDY BOOTS** sticky fingers **COFFEE CUPS** service with a smile **NO MINIMUM CARD SPEND** fun and quirky **AMERICAN EXPRESS** honest advice

Our customers **ALWAYS** are and **ALWAYS** will be the most important people in the shop



New arrivals!

Pat the Peacock, Darcy the Dragonfly and Casper the Chameleon



Dilly's words of wisdom

Always remember, you are braver than you believe, stronger than you feel and smarter than you think

19 The Parade, Bourne End, Bucks SL8 5SB
Telephone: 01628 521509
Email: tony@bowlerwright.co.uk

Nesting birds and river berms

by Wooburn & Bourne End Parish Councillor Katie Lamb



Despite the rain, the students still had smiles on their faces at the end of the day and left with a great sense of achievement at turning this straight concrete sided, fast flowing water course into a meandering chalk sided, fast flowing water course that will surely begin to thrive over the coming months.

The work was funded through contributions from the Catchment Partnership Action Fund, the Chilterns Chalk Streams Project and supported by the staff of the Chiltern Rangers.

If you would like to get involved in upcoming projects please let us know by emailing John Shaw john@chilternrangers.co.uk or Allen Beechey at

Abeechey@chilternsaonb.org

National bird box week started on February 14, and more than 60 families joined us in a very cold and

I'm so excited to be able to announce that the full council voted with the Biodiversity Working Party and we are going to reinstate the ponds at both The Warren and Farm Wood. Work will start soon and I'm sure we will find frolicking frogs and dancing dragonflies enjoying these new habitats.

The Community Orchard in the Blind Lane Park has now been planted so hopefully we will see a few apples, or pears, this year and with a traditional Wassail celebration planned for January next year, we should see a bumper crop for everyone to help themselves too.

If you have been down to Bourne End Rec in the last few weeks you will have seen the great work that the Chilterns Chalk Streams Projects(CCSP), Chiltern Rangers and volunteers from Bucks New Uni Football and Rugby teams, Revive the Wye and the River Chess Association have carried out.

In January, a programme of tree management, devised by the CCSP to increase light levels reaching the river, was carried out by Bartlett Tree Experts.

Using the felled wood the volunteers have been creating different habitats in the river, by building berms and deflectors. The deflectors are single trunks or large branches which are put in the river at an angle to push the water into the middle of the stream, these create dead, quiet spots for young fish etc.

The berms are a criss-cross of smaller branches which, in time, will silt up and plants like flag iris and loosestrife will grow and not only provide nectar for bees and butterflies alike, but become hatching stations for dragonflies and damselflies too. This work will also help conditions for invertebrates with under water structures, which in turn will provide food for bats, kingfishers and little egrets.



windy Wooburn Park to build nesting boxes.

It was a fantastic, if blustery, day. The boxes are now up and tucked away in trees all over the parish; each park and woodland having its own trail to walk, with clues of where to find the boxes (trail maps available from the parish council offices and on all entrance gates).

Over the coming months the parish rangers and I will be watching their progress and we will feed details back at the end of the nesting season.

I would like to say a personal thank you to everyone who came and built a box and to the councillors, staff and the rangers who gave up their time to help. Next time the Parish Council Biodiversity Working Party hatches a plan like this, someone please remind me to do it in the summer!

Kate.lamb@live.co.uk



additional photos by Shane Read

Trout rearing at St Paul's

The challenge, which was presented by parish councillor Margaret Marshall to St Paul's School, was whether children would be prepared to look after a very precious cargo of fertile trout eggs, feed them when hatched, maintain their water quality, record their growth and then release them into the River Wye.

With funding from the Open Spaces committee of the parish council, St Paul's took on the challenge, kept watch and learnt all about the life cycle of trout in a chalk stream and they'll be there when the trout are released into the river in April.

Parish councillor Dave Airley was at the school when Allen Beechey, Chilterns Chalk Stream Project Officer, brought along the aquarium, specially designed to recreate river conditions, and set it up in the school entrance.

Then it was time to explain what would be involved and how the necessary commitment from the young volunteers could be rewarded with the eventual excitement of watching the school-reared young brown trout swim off into freedom.

"There was a moment of drama when the eggs hatched on the first day of half term," Dave said, "but we had read that they didn't need feeding at this stage as they took in the goodness they needed from the egg sacs."

"By the time they needed feeding the children were back at school and were doing that regularly along with keeping the water clean."

Dave admits that the Easter holidays might be a problem when it comes to releasing the young trout but reckons "we'll worry about that when we see how they are growing."

Wooburn and Bourne End Parish Council will be watching the project they funded with great interest as the River Wye is a vitally important chalk stream which runs through the parish and into the Thames.

The Chilterns Chalk Stream Project is delighted to have been able to extend Trout in the Classrooms to another school and explain the importance of habitat degradation and drought which has reduced trout numbers along several stretches of the river.

And St Paul's are delighted that they can make a difference while learning all about life cycles and the importance of certain species to maintain river balance.



Our pictures show Libby Armstrong and Jack Baker helping Allen Beechey putting the eggs into the aquarium and Dave Airley (left) with Allen after the eggs were all safely introduced to their new home.



The Wooburns Youth Club

Calling all children aged 10 – 14 years

WE NEED YOU!

Come along on a Tuesday 6.30 – 8.30pm when you can try these activities:

Pool – Table Tennis – Wii – Xbox

Table Football – Arts and Crafts

Special events such as ice skating & bowling
Tuck Shop

For more information call Dan, Wooburn Youth Leader, on 07921 109689

Volunteers always welcome

Venue: Chapel on the Green

Tuesday 6.30 – 8.30pm (school term time)

Admission £1

D&BDIGITAL
ENGAGING DIGITAL EXPERIENCES

WEBSITE & APP DESIGN
FRONT & BACK END DEVELOPMENT
E-COMMERCE . SEO . SOCIAL
WE CRAFT EXPERIENCE ONLINE

CALL 01494 853153 EMAIL damien@dandbdigital.com VISIT www.dandbdigital.com



CROWDEN
• COACHWORKS LTD •



- Car Body Repairs •
- Garage Services •
- Accident Repair Services •
- Insurance Repairs •
- Paint Spraying & Much More •

We repair all makes and models and also deal with all insurance companies

5A The Green, Wooburn Green, High Wycombe, Bucks HP10 0EE

Tel 01628 526463

www.crowdencoachworks.co.uk

Support your local craftsmen and traders

New members wanted for Forum Players

Our audiences were delighted with Dick Whittington and his Cat. Many thanks to all of you who, once again, have supported us and responded enthusiastically – oh yes you did!

Our AGM took place at the first meeting after the end of panto and, after steering the ship successfully for the last few years, our illustrious chairman Emily Plumridge stepped down.

We are very grateful to Emily for her inspiration on stage and her organisational skills.

Tracey Huxley also resigned from the committee. Over the past few years Tracey has led the charge on our online advertising by ensuring the shows appear on a variety of websites and pages.

Finally, after many years of sewing, Wendy Keeble retired as wardrobe mistress. Wendy's dedication and vision has delighted cast and audiences alike. Over many years and many shows Wendy's costumes frequently brought gasps of admiration with their wow factor.

Ros Bartlett has taken on the role of chairman with Kerry Hudson as vice chairman and Fiona Russell joining the committee. Tracey Huxley has taken on the role of wardrobe mistress. We will all need support in our new roles and we look forward to future productions.



While we have a very good group of young members we really need more people to join us. This would offer greater scope when it comes to selecting scripts for future shows. If you have a

love of theatre why not consider becoming a member and getting involved in all aspects of amateur drama. Everything from treading the boards to building a foot-powered taxi for the dame will be on offer along with set design and construction, theatrical makeup and welcoming audiences on show nights.

Give our secretary, Leigh Robinson, a ring on 01628 523291 or email leigh@forumplayers.com and she will be happy to tell you all you need to know about Forum Players.

We're planning a Quiz Supper for the Spring on Saturday 21. Look out for the posters or visit our website www.forumplayers.com. See page 37.

Could you be a governor at Claytons School?

Claytons Primary School is appealing for new governors.

They write: "Claytons is the only primary school in Bourne End village and is a happy, thriving school with an excellent and committed staff, supportive parents and an active governing body.

"Some of our long-standing governors are coming to the end of their terms of office and so we wish to fill these positions. Our governing body is made up of parents, staff, community and local authority members.

"Community governors are extremely valuable as they provide a wide perspective and bring useful life skills and experience to the role. Excellent training and ongoing support is available to all new members."

If you are interested please contact the chair of governors on 01628 525277 or email to governors@claytonsp.org.uk



COMPETITION WHY DO YOU LOVE BOURNE END?

On Thursday May 12 we will welcome 40 French guests from Octeville sur Mer.

We will present each of them with a mug as a souvenir of their stay in Bourne End.

Draw, paint or take a photo of your favourite place and submit your entry at Bourne End Library by April 16. The winning design will be printed on the mug.

The competition is open to anyone between four and 15 and there will be three finalists (KS1, KS2 and Secondary). They will each win a family ticket to attend Bourne End Twinning Association's Barn Dance on Saturday May 14 at Bourne End Academy.

Sue Wagner, David Davies and Barrie Penfold will be our panel of judges. Winning mugs will also be sold at Bourne End Cards and Gifts shop on The Parade.

Contact Sandrine Hammerlindl on 07771521250 with any queries.



BOURNE END MOTOR COMPANY

Bourne End Motor Company was established in 1994 and in that time we have built a reputation for offering the personal and professional approach normally only found in the more prestigious franchised dealerships.

We have become recognised as one of the leading specialists in low mileage, privately owned cars with full service history. Most of these cars are between six months and four years old. As well as your regular family cars ie. Ford, Vauxhall, Fiat, Mini etc. we also sell luxury brands such as BMW, Mercedes.

Over the years we have built up a vast range of suppliers and through these we can source almost any make and model of car, all of which offer a significant saving than those offered by the larger Franchised Main Dealers whilst still matching their standards.

WAKEMAN ROAD • BOURNE END • BUCKINGHAMSHIRE • SL8 5SX • TEL: 01628 533 222 • FAX: 01628 530 264

- Local Family Business
- All Cars HPI Checked with Service History
- Computerised Stock Locator System
- Most Makes/Models available
- At least six months Warranty on all vehicles

TEL: 01628 533 222
WWW.BEMC.CO.UK



Wooburn and Bourne End Parish Council for co-ordinating local efforts and ordering in the branded bags.

A huge thank you to everyone who took part. The group had comments from a number of residents offering support for future events, and they're considering making this a monthly litter-pick to keep the environment spick and span.

Meanwhile the landlady and staff of The Walnut Tree (below) also took to the streets with their purple litter bags in support of the scheme.

They concentrated on the Hedsor Road, Furlong Road, Recreation Road and park areas collecting a shamefully large amount of rubbish from those areas.

Keeping it clean for the Queen

The Clean for the Queen campaign, intended to encourage people to tidy up for Elizabeth II's 90th birthday, was royally supported in Bourne End.

On March 5 a stalwart group of residents litter-picked the estate around Kennet Road in Bourne End, finishing with smiles, bags, and a photo on Cherwell Green.

The volunteers were supported by the waste team from Wycombe District Council who not only agreed to come out and clear the Wakeman Road footpath, but did it on a Saturday morning to coincide with the residents' litter initiative. Unfortunately they were so efficient they had gone before they could pose for a photo.

The litter-pickers also send a big thank you to Cllr Fiona McGarel-Groves and Penny Baron from



Alexander Jolliffe Upholstery

Website: www.ajurc.com

Email: alex.djolliffe@gmail.com

Mobile: 0795 101 2222



No. 25

**Specialists for
Mother of the
Bride/Groom,
Ascot, special
occasion and
cruise wear.
Accessories
too...**

25 The Parade, Bourne End,
Bucks SL8 5SB

Tel: 01628 528877

Open Monday to Saturday
9.30am to 5pm

See website for Sunday Open Days

www.No25ofBourneEnd.co.uk

Solicitors Buchanans

**Divorce | Conveyancing | Commercial | Employment |
Wills | Probate | Litigation | Elderly Client**

Buchanans Solicitors can assist with all the above and more.

Buchanans Solicitors is a friendly, modern law firm which offers a broad range of services and aims to deliver clear advice promptly and cost effectively.

Call us for a free, no obligations chat on 01628 810 707

Swains House, Swains Lane, Flackwell Heath, Buckinghamshire HP10 9BN
office@buchanansonline.com
www.buchanansonline.com



Authorised and regulated by the Solicitors Regulation Authority (No. 00469169)

Now providing
specialist Family and
Divorce legal advice –
please contact
our Nick Rees in
confidence

Little Marlow Parish Council

By Emma Marsden, parish clerk

Quality Status

Little Marlow Parish Council is delighted to be awarded Quality Status. This is a new scheme and we are very proud to be one of the first councils within Buckinghamshire and the UK to be accredited. It gives our parishioners the reassurance that the council is adhering to best practice in all areas of its operation. Now we need to make sure that we keep up the standard.



Sheepridge Lane Vehicle Activated Sign

After extensive lobbying to make this road safer we finally have sent off the purchase order for a VAS. This couldn't have been possible without the funds from County Councillor David Watson, the Chepping Wycombe Local Area Forum and the parish council. We hope it will make this road safer.

Playground

The new picnic table has been installed within the playground and it looks fantastic. We would like to thank the Little Marlow Amenities Committee for a donation towards the cost of this new table.

Green Paths

We are delighted that the second phase of providing a Green Path along Heath End Road has been completed. This was a joint project with Chepping Wycombe Parish Council and we are very pleased that we have provided a safe track for pedestrians to use from Flackwell Heath up to the M40 Motorway Bridge. Green Paths are great ways to provide safe passage for people to walk safely along busy roads.

They are natural in design and help maintain the rural nature of the parish. Little Marlow Parish Council wishes to create an additional Green Path along the Wycombe Road from the Rebellion Brewery up to Pump Lane North. We are at the consultation stage regarding funding from Wycombe District Council.

Let there be light?

We will be replacing two street lights on Winchbottom Lane which have reached the point of non-economic repair. They will be LED lights and provide better visibility and better economy and

maintenance. We are sorry there has been an ongoing problem with a street light in Coldmoorholm Lane. The council is working with our maintenance supplier, but we have had problems of access due to parked cars close to the street light.

Athletics track, Little Marlow

The Athletics Track has been used throughout the year by numerous clubs and its second season is starting in April. It is a fantastic facility, but there were some teething problems with parking and the loud speaker system.

Planning permission has been granted for a new speaker system and we are hopeful that this will bring a positive effect for neighbouring properties. We were delighted to have a productive meeting with Wycombe Phoenix Harriers Athletics Club.

They are keen to be part of the community and we hope that working together we can look forward to a successful 2016 season.

Solar Farm

A planning application was submitted for the creation of a Solar Farm adjacent to the Athletics Track in Little Marlow. We objected primarily on it being an inappropriate development in the Green Belt and Area of Outstanding Natural Beauty.

It also went against planning guidance regarding the Little Marlow Lakes and Country Park. This application has been refused by Wycombe District Council, but we anticipate that the applicant will appeal this decision and will keep you updated.

Twitter

The parish council is embracing social media to improve interaction with parishioners. We can be followed on Twitter at #LittleMarlowPC. We hope to 'tweet' with you soon!

Our next meeting is April 5 at the The Pavilion, Church Road, Little Marlow. Tel: 01628 890301
Email: clerk@littlemarlowparishcouncil.org.uk
Website: www.littlemarlowparishcouncil.org.uk

Justin Willment

Painting & Decorating

Specialising in all aspects of
Painting & Decorating



01628 526 528
07840 715 444
jrwilment@hotmail.com

**CITY & GUILDS QUALIFIED
FULLY INSURED**

From The Ground Up

Garden care in Bourne End

*Free practical garden workshops
throughout the summer*

Details at FTGUGarden.co.uk
07863 735786



Care of the Mind

At Phoenix, we believe it is important that mental health problems are treated speedily. With over 30 therapists, from psychiatrists to psychologists and nurses, to our hypnotherapist and counsellors, we are able to address any problem.

Our fully qualified practitioners only practise evidence-based therapies and we work in association with the inpatient and day hospital services of Cardinal Clinic, so if you are admitted into hospital, you will be assured of continuity of care.

Based in Wooburn Green, many of our therapists also work in other areas and some treatments, including nursing care, can be delivered in your home. Our friendly staff are here to guide you and to make your recovery as stress-free as possible.

Call 0870 162 0673, email enquiries@phoenix-mhs.com
or visit www.phoenix-mhs.com to find out how we can help.


CARDINAL CLINIC
in association with the inpatient and day
hospital services of Cardinal Clinic


Phoenix
Mental Health Services

Suffolk House, 54-55 The Green, Wooburn Green, High Wycombe HP10 0EU Tel 0870 162 0673 www.phoenix-mhs.com



Cards for good causes...

Coffee and cakes for the team of volunteers who support the Cards for Good Causes after another very successful pop-up shop in St Dunstan's Church at the end of 2015.

It was also the tenth year for many of the volunteers including Beryl and Ron Mann, Sharon Butler, Mary Heffernan, Barbara Bradbear and Jenny Boas (all in the photo).

Jenny said "Not only is this a very worthy cause with an excellent selection of cards, it is also a social event bringing the people of the village together at Christmas".

Keen to be active? Come to the Bourne End Day Centre

An entirely new venture is starting at the day centre and the invitation is to join the Movers and Shakers!

Every Monday the day centre will offer activities, talks, exercise such as Zumba and lunch for £5.

From 11am to 2pm the emphasis will be on providing the right mix of activities for those aged 55plus to keep fit, socialise and make new friends.

This new venture is aimed at those who feel they should do something different and interesting while being part of the community.

Day centre manager Debra Shirley explained that she had seen a similar scheme and been very impressed by what was offered. Monday April 4 is the first day. "Just come along and see if it is for you," she says.

Finding new ways to extend the use of the day centre is on-going and the Fremantle Trust is always open to new ideas.

Debra believes that the centre could be used as a source of respite for carers: "They do so much," she told *Target*, "but their needs are frequently neglected.

"We think the day centre could provide them with some space and a chance to relax. That is work in progress at the moment, but we would like to hear from anyone with ideas or suggestions on what we might do."

Recent activities for the regulars have included making marmalade which is now on sale to visitors. There are also regular cooking sessions, armchair exercises, games, music and a sing-a-long.

Every day a three-course lunch at £5.50 is available for anyone who needs a good meal without the hassle of cooking. "Just phone up the day before and book yourself in," Debra says, "we have some regulars who come in for lunch and it makes their lives easier".

A free trial day is available for anyone aged over 65 who feels they might like to make regular use of the centre. Just book in and during the day there will be time to discuss future needs.

To book in for lunch or a free trial day please ring deputy manager Vivienne on 01628 527024

Below: Some of the delicious marmalade made at the day centre



94 Little Marlow Road
Marlow
Buckinghamshire
SL7 1HG
01628 483062

Lee Farm, Lee Lane
Pinkneys Green
Berkshire
SL6 6PE
01628 622086

1A Dodds Corner
Stokenchurch
Buckinghamshire
HP14 3RZ
01494 485855

61-63 The Parade
Bourne End
Bucks, SL8 5SB
01628 525274

www.hallplaceveterinarycentre.co.uk

SMALL ANIMAL CONSULTATIONS BY APPOINTMENT
24 Hour Emergency - 01628 622086



PT CARPENTRY
and Household Services

Design • Repair • Rebuild - just ask

Paul Thomas

Mobile : 07905 221991 E mail : ptcarpentry@live.co.uk

Carpentry - Plumbing - Plastering - Decorating - Gardening
(sub contract electrical services)

Carpentry design and repairs, bespoke furniture made to order, erecting sheds, stables, fencing, trellis, garden gates, assembling flat pack furniture, hanging doors, changing locks & door furniture, fitting security locks to doors and windows, boarding out lofts & installing loft ladders, plumbing in sinks, installing washing machines, kitchen and bathroom fitting, changing taps, tiling, grouting, putting up shelves, pictures, mirrors & curtain poles, clearing and repairing gutters, landscaping, general garden tidying, pressure washing patios, project management.....

the list goes on and on!!.....

"To do the jobs that you don't have time to do !"

Mobile : 07905 221991 E mail : ptcarpentry@live.co.uk

You can't have everything - where would you put it?

JAMIE'S TOURS

Picking up at a location near you!

Something completely different!

ADAM HENSON'S COTSWOLD FARM

Wednesday 13 April

Highlighted on a popular rural TV programme

Your chance to enjoy this conservation farm

£30.75 adult £25.75 children

CLACTON ON SEA

Wednesday 18 May

Seaside delights - gardens, glorious beach, pier and

shop in the Clacton Factory Outlet

£21 adults £16 children

OUT OF THE ORDINARY HOLIDAYS!

Great Little Trains of Wales

12-17 June with lots of steam train journeys

£385.25 (based on two sharing)

Journey through the Ages

1 - 4 July Nostalgia all the way

£358.00 (single supplement applies)

Phone or email Jamie with your details to go on the mailing list for all trips and holidays

www.jamiestours.com

Ring 01494 416500 Mob 07714583215

or email jamiefyfe2@gmail.com



Brittons Solicitors

28 The Parade
Bourne End
Bucks SL8 5SY

Friendly, helpful, professional, efficient and cost effective legal service.

We look after you.

Telephone: 01628 533350

Fax: 01628 533119

Email: lex@brittonsol.co.uk

V J CLEANING

ALL HOUSES & BUSINESS PREMISES CLEANED TO THE HIGHEST STANDARD

REGULAR WEEKLY CLEANS OR ONE-OFF DEEP CLEANS.

WE CAN WORK HOURS TO SUIT YOU, HOWEVER BIG OR SMALL.

FOR A FREE, NO OBLIGATION, QUOTATION

**CALL US NOW ON
07869 127508 OR
01628 527891**

Thank you Squirrels

Every Christmas a large group of smiling older people drink a toast to The Squirrels.

Thanks to The Squirrels they will have enjoyed a wonderful lunch and each one will take home Christmas gifts to celebrate the festive season.

Many of them live alone and won't have family support at Christmas. This occasion, organised by The Squirrels, is their Christmas highlight.

So who are The Squirrels?

Go back 38 years to 1978 when a group of local businessmen, who met socially once a month, decided to form a charity with the aim of raising funds to help others.

At that time there was a television cartoon called *The Secret Squirrel* and the main character carried a small case from which he produced anything that would help him right wrongs. He was described as the James Bond of the rodent world.

To the founding members it seemed right to call their charity The Squirrels as businessmen in those days always carried a briefcase.

Since then The Squirrels have supported a large

number of local causes. The idea of holding a Christmas lunch has proved to be their major event and one they have enjoyed arranging, if only to see the pleasure it gives to people who might not be part of a family for the festive season.

Founding secretary Norman Christy has lived in Bourne End for more than 40 years while running an accountancy business in Pimlico.

David Bryant from the award winning Fruit Market on The Parade is also an enthusiastic member. Along with others they meet every month to consider any appeals for help, and, of course, to update their invites list for that extra special Christmas lunch. "That's always a priority," says David with a broad smile.

If a local organisation would like to contact The Squirrels with an appeal for funding or if anyone would like to add an elderly person's name to their invite list for Christmas 2016 email enquiries@thesquirrels.co.uk



CHAPMAN LANE DISTRIBUTOR NEEDED

Chapman Lane needs someone to distribute copies of *Target* every two months. Health problems mean that the present distributors cannot continue to walk up the hill, something they have enjoyed doing for many, many years. There are around 30 *Targets* to be distributed and the bundle would be delivered when each issue is published (six times a year). If you could help please ring Barrie Penfold (*Target* Distribution) on 01628 525415.

The CACI Pod



Our CACI Ultimate lifting treatment is both preventative and rejuvenating

- * Facial Lifting * Lines/Wrinkles
- * Eye Bags * Microdermabrasion
- * Skin Hydration * Neck Treatments
- * Cellulite, Stretch Mark Treatments
- * Jowl lift

20% off any course with this advert

CACI's celebrity friends include

Jennifer Aniston, Courteney Cox & Jennifer Lopez

thecacipod@yahoo.com Tel/Text 07901 276977

Magnolia House, Bourne End, Bucks SL8 5TZ Visit: www.caci-international.co.uk for more information

bourne end dental



Our exceptional levels of expertise and our team approach to caring means Bourne End Dental has been at the forefront of general practice for more than 20 years.

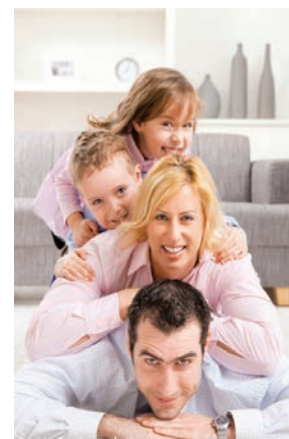
- ❖ Considerate dentistry in a caring environment
- ❖ Superb clinicians with a family focus
- ❖ Early morning & Saturday appointments
- ❖ Specialists in gum therapy, root canal treatment & braces
- ❖ Cosmetic dentistry & whitening
- ❖ Dental implants & facial aesthetics

Protecting, renewing and enhancing the lifelong dental care of our patients

01628 523 353

Station Road, Bourne End, Bucks, SL8 5QP

www.bourneendental.co.uk



Library retirement with tears



After 16 years working together there was no way that Penny Wells would be allowed to leave Bourne End Library without a celebration, lots of laughs and a few tears.

"But I've already got plans to ensure Penny stays involved," library manager Inka said confidentially before revealing the farewell retirement gifts to suit the occasion.

Magazines for quiet reading included Retirement Today and Gardening Weekly. Other gifts included a shawl to beat the chills, knitting needles and wool for a new hobby, reading glasses, bus pass application form, details of National Trust properties for midweek days out, a local walks leaflet and a DIY manual. And the retirement essential - an inflatable Zimmer frame. Finally the gin to go with tonic at the end of a tiring day in retirement. There were also flowers along with a fabulous cake to inspire Penny on her way into retirement.

Inka and the other library ladies are confident that this will not be farewell to Penny as they hope to welcome her return as a library volunteer. "She has been my friend and my support through all these years," Inka said with a smile, and a tear.

Left: library ladies from left Nicky Willis, Inka D'Agostino, Penny Wells and Julie Richens.



Penny's fabulous cake

Railway enthusiasts age well

Marlow & District Railway Society were delighted to welcome their President, Sir William McAlpine Bt, to their January meeting when he talked about his passion for railways, particularly the steam variety, and collecting memorabilia for his railway museum at Fawley.

Today, aged 80, Sir William has retained a fascination for railways and enjoys communicating that to fellow enthusiasts.

At the meeting there were birthday congratulations for member Doug Hill who was celebrating his 80th birthday. Both men agreed to laugh at the advancing years. Doug spoke to Sir William about his great interest in encouraging young people through the WorldSkills UK Competition. The next competition takes place in 2017 in Abu Dhabi. It plays a vital role in raising standards, esteem and levels of expertise in further education, apprenticeships and skills through

competition activities and local initiatives.

Doug (on the right) wore the blazer marking his medal win as the First UK Skills apprentice back in 1953. At that time he was an apprentice cabinet maker and went on to set up his own,



very successful, quality woodworking company. His interest in the apprentice's competition, held every two years, has continued and in 2011 the event took over the Excel Centre in Docklands. Doug's role was to show government ministers from many countries around the exhibition. He believes that apprentices are the backbone of every company.

It was a great start for the society's new year and a celebration of 160 years for two railway enthusiasts.




BY APPOINTMENT TO
H.M. QUEEN ELIZABETH II
HEATING & PLUMBING ENGINEERS
R.S. BOILER SERVICES

RS Boiler Services

Gas • Oil • Heating
Plumbing • Electrical
L.P.G. Specialists • Propane • Butane

TEL: MARLOW (01628) 483099 FAX: (01628) 476843

Reg No 62

Cutting Edge

All in one
hair
beauty
&
barber shop

49 The Green
Wooburn Green
HP10 0EU

t. 01628 526070
www.cuttingedgewooburn.co.uk



Top Knots
& Tiaras

Girls Parties Now Available

Ball skills for little ones

"Due to the amazing response to the free trial session at the beginning of February, Playball is now a regular class at the community centre," says Joanne (right) here with coach Emma and their banner.

Playball has been a multi-sport and movement activity for almost 30 years. Children from two to eight years in very small classes concentrate on the main ball sports. Additionally Playball teaches listening and concentration skills along with the ability to follow instructions, teamwork and good sportsmanship.

Classes take place in the main hall on a Friday morning with two to three year olds from 9.45 to 10.20am then



three to four year olds from 10.30 to 11.15am. Parents can sign up for a free trial session by emailing Joanne on joanne@playballsouthbucks.co.uk. There's more information on the website www.playballkids.com

Playball believes that children love to be active and thrive in the fun-filled lessons, taught by coaches passionate about teaching.

Join us making films...



Members of Bourne End Video Makers on location

With today's inexpensive technology you can easily turn your holiday and social media footage on your smart phone into a short film.

At Bourne End Video Makers we can show you how.

You will be surprised at how easy and cheap it is to make a short film to wow your friends and family. Come along to any of our meetings in the *Target Room* on the first and third Wednesday evenings of the month (no meetings in August) at 8pm with no obligation. Meet a small group of enthusiastic and friendly amateur filmmakers and enjoy a nice cuppa.

We make all kinds of films using mostly ordinary domestic camcorders, still cameras (that also take video) and smart phones.

The fun is in the process of making quality films with the subsequent satisfaction of showing the results to others, entering short film festivals and competitions with similar clubs.

Help can be provided both to those with no experience and those who wish to develop their filmmaking skills.

There is expertise within the group to reflect this range including people who have worked or are working in the industry.

Short films are usually under 30 minutes, though our films rarely exceed 15 minutes.

For an example of one of our very short films go to <https://youtu.be/xpgD5-SJEaw>

For an example of a longer film (11 minutes) go to <https://youtu.be/7WH11QJOWko>

The club has been in existence for 50 years and the quality of productions has developed along with members' expertise and the rapid development of affordable technology. Professional actors are used in our storyline films and current productions this year include a delightful comic story of a young boy who finds a purse with money and buys himself a huge bar of chocolate with interesting results!

We are in the process of making a short promotional film and a longer documentary in support of Maidenhead Rotary's fifth 5k Bunny Fun Run this Easter. Early production has also begun on a story about a man and his dog and a documentary for the Wycombe Society highlighting the 18 pioneers of Wycombe commemorated in the four stained glass windows of the Town Hall.

When it comes to filmmaking there are many tasks which are as vital as the person behind the camera, such as controlling sound quality, lighting a scene correctly, directing, administrating and deciding, and sourcing costumes and props. There are therefore many opportunities for those wishing to offer their help and develop their skills.

If you are interested please phone David Jarman, secretary on 01494 712441 or Geoff Bourne on 07943 350 398.



Open Day Sunday April 17th
10.30 am to 4 pm
 Try river sailing
 Find out about training courses
 Enjoy "Tea by the Thames"
New families and individuals welcome for sailing or social membership.
Call in or see www.utsc.org.uk



UPPER THAMES SAILING CLUB
 Riverside, Bourne End, Bucks, SL8 5RF

Access via the towpath from Bourne End Marina, or via Coldmoorholme Lane

Your local Drycleaners at your service

Regular Discounts

Follow us on Facebook and Twitter, or sign up on our website for regular promotions and discounts.



Regular discounts
www.bluedragondrycleaning.co.uk

Pop into your local Blue Dragon at 62 The Parade, Bourne End for a full range of drycleaning and domestic laundry services, including our **super speedy 2 hour and same day drycleaning options**. We can even take care of your repairs and alterations.

Branches also at: Beaconsfield, Gerrards Cross, Great Missenden and Ickenham.

Your Bourne End Blue Dragon

62 The Parade,
 Bourne End, Bucks.
 SL8 5SB
 Tel: 01628 522358

Opening Hours

Monday - Friday:
 8.00am to 5.30pm
 Saturday:
 8.00am to 4.00pm
 Sunday: Closed

It pays to use Blue Dragon





ABOUT BOURNE END JUNIOR SPORTS CLUB

Founded in 1970 Bourne End Junior Sports Club is a registered charity run by volunteers to provide sport and recreation for children and young people, with many being highly qualified in their own sport. The New Road Sports Hall was built in 1982 and later extended to include a climbing wall and a club room. The multi-sport centre is used extensively by club members and members of the whole community. Please visit our website for more information www.bejsc.co.uk

Swim section

Adult swim training sessions have begun. These are open to all adults, not just parents of club members. They are aimed at those who maybe swam in the past and now want to pick it up again, or those who swim regularly but would like advice on strokes as well the motivation of swimming in a group. If you can comfortably swim up and down a pool for half an hour, but would like to do it faster and with better technique then this could be for you. We also have off lane space for those with their own programme. Sessions are on Thursday 8pm-9pm at the Handy Cross pool. The current price is £10/month including pool access. For more information please contact info@BEJSC-Swimming.org.uk. The Swim Section are now using the new eight lane pool at Handy Cross.

Bourne End basketball tournament raises £446

A basketball tournament in Bourne End saw 17 year old Oli Lawrie raise hundreds for Alzheimer's Society.

Four teams came together at the sports club to take part in the fundraiser, which raised £446. There was a junior and senior squad from Sir William Borlase's Grammar School and two teams from our Basketball Section.

There was strong competition from both sides in the junior match; the victory was secured by Borlase. Bourne End just snagged the victory in a tough match for the seniors.

Alec Bussell - SWBGS Junior was crowned the winner of the shootout and received his Alzheimer's Society tee-shirt.

Runner up Ken Alcantara - a Bourne End Senior - got a pin.

Oli designed basketball cupcakes to add to refreshments for the event in January, and anyone who wanted to then took part in a huge shooting game.

Oli, the event organiser said: "It was a great event, and it goes to show how a community of different people can be brought



together through the medium of sport, even if it is based around basketball.

Not only this, but £446 plus Gift Aid was raised, all of which will go to tremendous work within communities around the UK. Thank you to everyone who donated, it really will make a difference."

Follow this link to watch the event:

<https://www.youtube.com/watch?v=OqzcsWevHJ0>

Congratulations and thanks, very well done Oli and his helpers Oscar and Ryan for organising such a successful event.



Climbing parties

Did you know you can book a climbing party at the sports hall? We cater for ages six and over; participants need no experience as they will be guided by our instructors. Please phone for details on 01628 528110 or e-mail office@bejsc.co.uk



Visit our website www.bejsc.co.uk for more information.

Classes for adults

Pilates class is on Thursday evenings from 6.30pm to 7.30pm. This gentle form of exercise is suitable for all ages. The following classes are run at the sports hall - Monday fitball 9.30am to 10.30am, Tuesday 4pm to 4.45pm stretch class.

Please contact us on the number below for more details.

Treatment Room – for all your aches, pains, and injuries contact Wendy at The Sport Massage Clinic on 01628 528226.

Acupuncture available with Ray Siberini – call 07748 968762, www.acupuncture-balance.co.uk

**For information on clubs using our premises please contact the sports hall www.bejsc.co.uk
email: office@bejsc.co.uk. Chairman & Editor: Liz Hutton 01628 478168
Manager: Pete Sherwood 01628 528110 mobile 07710 132424
Sports Hall: (answerphone) 01628 528110**

Need an Electrician?



N.I.C.E.I.C. Approved
Portable Appliance Testing
All electrical installations and
rewiring undertaken.



**SELLECK
ELECTRIC**

**ELECTRICAL CONTRACTORS
AND TESTING SPECIALISTS**

**S.D. & R.A. Selleck
Electrical Installations Ltd.**

3 The Green, Wooburn Green, High Wycombe,
Buckinghamshire, HP10 0EE

Tel: 01628 525278

Fax: 01628 810373

www.sellecks.co.uk

Wooburn Wheels

Service & Repairs, Children's Bikes, Adult Cycles,
Good Selection of Accessories.

Tools, Appliances & Accessories

COMPETITIVELY PRICED: Kettles, Irons,
Toasters, Hair Dryers, Coffee-Makers, Shavers,
Fryers, Lamps, Cable by the metre, Hoover Bags,
Plugs, Lampholders etc.



TARGET READER SERVICE

Useful Telephone Numbers

BOURNE END COMMUNITY CENTRE 01628 522604

www.bourneendbucks.com

POLICE 101 **EMERGENCY** 999

CRIMESTOPPERS 0800 555 111

www.thamesvalley.police.uk

POST OFFICES www.postoffice.co.uk

Last collection time:

Bourne End, Furlong Road 5.15pm 01628 520050

Flackwell Heath 4.45pm 01628 520524

Wooburn Green 5.00pm 01628 522939

DOCTORS' SURGERIES

Hawthornden Surgery, Wharf Lane, Bourne End SL8 5RX

Dr S H Buxton, Dr M Wolfen, Dr P Newman, Dr S Abbas, Dr M
Siddiqui. Branch Surgery – 47 Straight Bit, Flackwell Heath,
Bucks HP10 9NE

MESSAGES, VISITS & APPOINTMENTS 01628 522864

www.hawthorndensurgery.co.uk

HEALTH VISITORS' SERVICE 01628 482788

Cherrymead Surgery, Drs King, Fraser, Elias, Hettiarachchi and
Payne

Queensmead Road, Loudwater, High Wycombe HP10 9XA

MESSAGES, VISITS & APPOINTMENTS 01494 445150

www.cherrymeadsurgery.co.uk

Pound House Surgery, 8 The Green, Wooburn Green HP10

Dr Elizabeth Bailey, Dr Raj Thakkar, Dr Shareen Hallas,

Dr Emma Southworth, Dr Mia Murray

Also at: Orchard Surgery, Station Road, Bourne End SL8 5QE

MESSAGES, VISITS & APPOINTMENTS 01628 530 997

www.poundhousepractice.co.uk

NHS 111 or www.nhsdirect.nhs.uk

HOSPITALS

Amersham Hospital, Whielden Street, Amersham,

Bucks HP7 0JD

01494 434411

Wycombe Hospital, Queen Alexandra Road, High Wycombe,

Bucks HP11 2TT

01494 526161

Stoke Mandeville Hospital, Mandeville Road, Aylesbury, Bucks

HP21 8AL www.buckshealthcare.nhs.uk

01296 315000

St Mark's Hospital, 112 St Mark's Road,

Maidenhead SL6 6DU

01628 632012

Wexham Park Hospital, Wexham Street, Slough SL2 4HL

www.heatherwoodandwexham.nhs.uk

01753 633000

BOURNE END DENTAL PRACTICE

Station Road, Bourne End, SL8 5QF

01628 523353

Mr G Goodall, Mr S Rees, Mr A Chandrapal, Mr A Powell

Mon-Thurs 8am - 5pm. Fri 8am - 4pm. Sat 9am - 2pm

www.bourneenddental.co.uk

ASH TREE HOUSE DENTAL SURGERY

6 The Green, Wooburn Green HP10 0EE

01628 532932

Peter Moys

Local handyman

01628 529714

No job too large or too small

Reasonable rates agreed prior to the work

peter.moys@yahoo.co.uk

Mobile: 07502 305 894

No VAT charges on labour

Fully insured | Free estimates

Established 1968

NEWELL & SON

20 Fennels Farm Road

Flackwell Heath



Tel: 01628 525329/524294

All Plumbing & Heating

Specialising in Bathrooms

Floor & Wall Tiling & Decorating

Reasonable Rates

No job too small

John M Wilks

Heating and Plumbing

EST 1971

Specialising in power flushing and

cleaning of all types of domestic

heating systems

Tel: 01628 527020

Mob: 07802 946209



www.buckspowerflush.co.uk

info@buckspowerflush.co.uk

Piano Lessons

A teacher with many years

experience. Lessons given in

Bourne End home setting,

High standards, good results

and good fun.

Young and old very welcome

ROBIN SHELDON

Call 01628 530174 or visit

www.piano-lessons-rts.co.uk

Community Minibus for Hire

12 Comfortable Seats

Reasonable Rates

Needs own driver

Contact Sue

at the Community Centre

01628 522604

Chiropody

Bourne End

Community Centre

Monday Mornings

07986

606814

For the treatment of all

Foot Ailments

CALL TARGET ADVERT

CE
nd websites

BROOKHOUSE VETERINARY SURGERY

61 - 63 The Parade, Bourne End SL8 5SB
 www.brookhousevet.co.uk 01628 525274

DAY CENTRE, Wakeman Road, Bourne End SL8 5SX

01628 527024

WYE VALLEY VOLUNTEERS, Portacabin, Wakeman Road
 Bourne End SL8 5SX

01628 521027

BOURNE END LIBRARY

Wakeman Road, Bourne End SL8 5SX 0845 2303232
 Sunday & Monday closed. Open from 9.30am, half day on
 Wednesday. Open Saturday until 2pm. Late Night on Tuesday
 www.buckscc.gov.uk/bcc/libraries/branches/bourne_end.page

British Rail Passenger Information 08457 484950

Bourne End Station, Station Road, Bourne End SL8 5QH
 www.nationalrail.co.uk

Carousel Buses www.carouselbuses.com 01494 533436

Arriva Bus Company www.arrivabus.co.uk 0844 8004411

North Thames Gas Emergency (Slough) 0800 111999

Southern Electricity Emergencies 08000 727282

Thames Water Supply Emergencies 0800 714614

THE SAMARITANS 08457 909090

THE SAMARITANS Katharine House, 17 Uxbridge Road,
 Slough, Berks SL1 1SN

CITIZENS ADVICE BUREAU 01628 621006

BUCKS COUNTY COUNCIL, County Hall, Walton Street,

Aylesbury HP20 1UA www.buckscc.gov.uk 0845 3708090

Highways (Transport for Bucks) 0845 2302882

Citizens Advice Consumer Helpline 0845 4040506

WYCOMBE DISTRICT COUNCIL

Queen Victoria Road, High Wycombe HP11 1BB
 www.wycombe.gov.uk 01494 461000

SCHOOLS

Claytons County Combined, Wendover Road, BE, SL8 5NS

www.claytonprimary.ik.org 01628 525277

Little Marlow School, School Lane, Little Marlow SL7 3SA

www.littlemarlow.bucks.sch.uk 01628 473316

St Paul's School, Stratford Drive, Wooburn Green HP10 0QH

www.st-pauls.bucks.sch.uk 01628 521553

The Meadows School, School Road, Wooburn Green

HP10 0HF www.themeadows.ik.org 01628 521634

Wye Valley School, New Road, Bourne End SL8 5BW

www.wyevalley.bucks.sch.uk 01628 819022

WOOBURN & BOURNE END PARISH COUNCIL

Council Offices, Town Lane, Wooburn Green HP10 0PS
 www.wooburnparish.gov.uk 01628 522827

LITTLE MARLOW PARISH COUNCIL

Community Office, The Pavilion, Church Road, Little Marlow
 SL7 3RS
 www.littlemarlowparishcouncil.org.uk 01628 890301

SING ON 01628 525415



Tailormade trips

BEACH HOLIDAYS

honeymoons
city breaks





As **your local Travel Counsellor** with years experience in the travel industry, I can tailor-make your perfect holiday. Available at a time to suit you, I will provide an unrivalled level of personal service, taking care of all your travel needs down to the finest detail.

Everything you book with Travel Counsellors is financially protected including hotels, low cost airlines and car rental at no extra cost.

SUE CLARIDGE Travel Counsellor

T 01628 876080
E sue.claridge@travelcounsellors.com
W www.travelcounsellors.co.uk/sue.claridge


Travel Counsellors ensures complete financial protection on every booking



The Kings Head


Church Road, Little Marlow
 Tel: 01628 484407

We serve a wide variety of hot and cold food every lunchtime and evening and all day Sunday from 12 noon to 7pm, plus a good selection of cask conditioned ales and fine wines. In the wintertime there are log fires and in summer a large garden. The Pavilion function room caters for any type of party including conferences for up to 50 people. Please telephone 01628 484407 for details.



DO YOU KNOW THIS MAN?

This is the face of Tony Elder



Tony Elder has been synonymous with car care in Bourne End for over 40 years and he has taken over Bourne End Garage, where, he says "No job is too much trouble".

Call in for a chat and speak directly to the person who will be undertaking the work.

BOURNE END GARAGE
 1 OAKFIELD ROAD, BOURNE END
TEL: 01628 533 236

SERVICING • EXHAUSTS • TYRES • WELDING • MOT'S ARRANGED
 LOCAL COLLECTION BY ARRANGEMENT

Joe Griffin TV AERIAL SERVICES

- Poor Reception Solved - Aerials repaired & supplied
- TVs - Hung on your wall for you. Also supplied & tuned
- Extra TV Points - For aerial and Sky (In HD!)
- Sky TV - Also Foreign Language TV

Call Marlow
01628 439115

A part of  OXFORD AERIALS

STEVE HOBSON Plumbing & Heating

Boilers, Gas Fires, Cookers,
Servicing, Installations and
Repairs,
Gas Safety Landlord Certificates,
Unvented Systems & Plumbing,
Vaillant approved installer

Tel: 01494 524357
Mobile: 07762 082984



 **BUCKS**
therapy

**Clinical Hypnotherapy
and Psychotherapy**
Call 07518 018 363
www.buckstherapy.com

**BS
GARDEN
SERVICES**



*Hedge Cutting
*Fencing
*Turfing
* Garden Clearance
*Driveway & Patio Cleaning
Call 07966205145
barrysteptoe@yahoo.co.uk

Pilates Matwork Classes

Beginners/Mixed Level and Intermediate
One to one by appointment

Venues - Abbotsbrook Hall
Upper Thames Sailing Club
Little Marlow Pavilion

St Dunstan's Church Hall - Bourne End
Call Sally on 0787 625 1967

DAVID HARRIS Electrician

FOR ALL YOUR DOMESTIC WIRING
Qualified & Experienced with
Electricity Board - Part P
TELEPHONE: 01628 810349

TO HIRE ABBOTSBROOK HALL

For Wedding Receptions
Meetings, Dances, etc.

APPLY TO
MRS C SAMUELS
2 RED COTTAGES
WELL END
or telephone
01628 528936

AMPLE CAR PARKING SPACE

The Phone Man

Need a new
telephone
socket for
your
computer or
SKY box?

Need one moved or repaired? Broadband signal
problems? Internal wiring problems? BT not
interested or you don't want to pay their very high
charges? Call John on 07709 895252 or 01494
711744 for free advice, fast service, and quality
work. All work and materials guaranteed.

john.summerbell@btinternet.com

For fast, friendly & affordable
taxation advice

Tax Returns/Self Employed Accounts etc.

Home visits & evening appointments available

For a quote, ring Keith on
01628 520426

or visit our website at
www.randallassociates.co.uk
for further details
Keith Randall ATT
Randall Associates

30 Stratford Drive, Wooburn Green HP10 0QH



Kingfisher
Building Consultancy

Thinking of extending?

We offer:

- Full architectural design service
- Planning and building regs applications
- Extension, loft conversion & remodelling
- Party Wall surveyor services
- Building and development consultancy

For professional, friendly advice, please
phone Bourne End (01628) 526998



FOR HIRE
St Mark's Church Hall
Station Road Bourne End SL8
5QE
Enquiries to: Michael Payne
077430 37938

TRYING TO JUGGLE YOUR CHILDCARE?

Cookham Montessori School
For children aged 2-5 years

We are extending our hours to offer a
flexible package for busy mums!

Mix & match your daily requirements:

- ♦ Session start times: choose from
8.30am, 9.00am, 9.30am or 12.30pm
- ♦ Session finish times: choose from
12.30pm, 1.30pm, or 3.00pm

Funding available for 3 & 4 year olds

Term Time Only

Ofsted Validated

Phone 01628 529414



www.cookhammontessori.com

EMMETT CONSTRUCTION DEVELOPMENTS LTD

Extensions – Conversions

Refurbishments – New Buildings

Private & Commercial Work Undertaken

Tel/Fax 01628 524500 e-mail: emmett123@btconnect.com



A world of experiences

Debra Aspinall visits Acorne PLC who run a hugely successful company, trading in experiences, from their Bourne End offices

Target readers will have driven or walked past Boston Drive numerous times and perhaps wondered what goes on behind the doors of the smart office buildings tucked away down this quiet street opposite Bourne End Station.

You may be surprised to learn that one of the businesses, Acorne PLC, opens the door to a world of fabulous experiences for the whole of the UK via the internet. From dining experiences to boat trips, comedy shows, tours of the Royal Albert Hall or Arsenal's football stadium it is arranged and sold from here.

You could say their stock-in-trade is happiness.

Founded more than 26 years ago, but in Bourne End for just the past two, Acorne pioneered the selling of experience days as gifts. Today they manage a portfolio of leading brands including Virgin, The AA Rosette Dining Voucher and lastminute.com experiences.

Incentives

Acorne also work on corporate accounts providing rewards, incentives and experiences to employees at big and small UK companies. Some of the country's leading brands like P&O Ferries, Nationwide and Wickes trust Acorne to boost incentive among their employees. Their slogan for this branch of the business is "The best things in life aren't things".

Founder Richard Gyselynck started the company selling gift tokens for flying lessons at Wycombe Air Park. He wanted to share his passion for flying by making the experience accessible to a wider audience.

He was joined by co-owner Andrew Dent and their company grew and grew, partnering Virgin in 2002 and making other key joint ventures along the way including Daily Mail Experiences, Woodmansterne Five Star Days, Very.co.uk and Lastminute.com.

The smart Boston Drive offices in Bourne End now house more than 90 staff, all sourcing and selling experiences from afternoon tea at Harrods to motor racing and shark diving. In fact, they organise over 3,000 gift experiences. There literally is something to suit everyone.

"There's a big trend towards spending money on experiences rather than material things," said Sales and Partnerships Director Tim Watkins.

"People are turning their backs on 'stuff' for the anticipation and excitement of planning new experiences to enjoy together, making memories that last far longer than the temporary buzz from buying an item.

"So an experience to enjoy together, be it a white water rafting adventure, a gin tasting experience, a weekend in a tree house or a champagne afternoon tea in a castle, is a really popular gift choice."

One of the main advantages of buying an experience gift pack, rather than a discount voucher, is the flexibility and choice the experience day gift offers. Virgin Experience Day gifts are flexible, allowing the recipient to choose a date to suit them or even change to another experience choice altogether.

With so many "giving" dates in our calendars there's never any down time for the business.

"As well as birthdays we have special events throughout the year. Our spa days and afternoon teas were big sellers up to Mother's Day and we expect a rush on driving and outdoor adventure days in the lead up to Father's Day," said Tim.

While having a world-class business in our midst is not only good for our village reputation, it's great that their 90 employees will also be boosting the coffers at the local coffee shops, supermarkets and petrol stations.

And, happily, Acorne is keen to

"Making memories that last far longer than the temporary buzz from buying an item"

further support the community they are now very much a part of.

They very generously back any employee-related charity and recently gave a fabulous dining experience as a raffle prize at the Jersey Guys concert in the community centre and a luxury hamper for a library raffle.

Other local organisations who have already benefited from Acorne's generosity include Bourne End Guides, Wye Valley Volunteers, St Paul's School and Wooburn Narkovians.

Visit their website www.acorerewards.co.uk to see more about the corporate incentive schemes or www.virginexperiencedays.co.uk for gift ideas.



Acorne plc owners Andrew Dent (left) and Richard Gyselynck

Virgin

EXPERIENCE DAYS





www.virginexperiencedays.co.uk

or call 0844 504 0844

DRIVING • FOOD & DRINK • AFTERNOON TEA • SPA & BEAUTY • ADVENTURE
FLYING • DAYS OUT • SHORT BREAKS • WATERSPORTS • EVENTS • UNIQUE GIFTS



also the home of...



Acorne Plc, Stamford House, Boston Drive, Bourne End, SL8 5YS

Happiness is no laughing matter!

41 days at sea ahead for fundraiser

A Flackwell Heath resident is preparing to set off for a gruelling yacht race to raise money towards building a children's hospice.

Stephen Jones, 65, is preparing to fly out to America on April 22 to join the IchorCoal team for the seventh leg of the Clipper Round the World Race, beginning on April 24, from Seattle to New York via the Panama Canal and the Caribbean.

Divided into eight legs and 14-16 individual races, the Clipper race, which started in England on August 30 last year, involves 12 identical racing yachts, each with a trained skipper to safely guide the crew through the 40,000 mile circumnavigation.

Stephen will be taking part in the demanding race in aid of Alexander Devine Children's Hospice Service, a charity set up by the parents of Alexander, who was diagnosed with a brain tumour aged four and died aged eight.

The charity is now working to build and run a children's hospice in White Waltham which will provide palliative care for children in Berks and Bucks, respite care, support for families and a community outreach team.

Spending 41 days at sea, sailing 24/7, and covering 7100 miles in a 70-foot ocean racing yacht which will be shared with around 19 other crew members, Stephen is under no illusion that the experience will be a great challenge.

He said: "It is full on. I am excited, but I am apprehensive too because I know from my training how difficult it will be.

"I will get seasick, which is not very nice and you can't get off, you have to grin and bear it. You feel like death and you just have to put up with it until it passes."

The conditions below deck are also expected to be gruelling, with tropical temperatures, trade winds and even thunderstorms expected throughout the Caribbean section of the race.

"Down below it is cramped and it will be very hot. I probably know about seven of the crew already from my pre-race training, but there will be friction and disagreements from time to time!

"The boat is often at 45 degrees because boats tip and sleeping will be difficult. Four hours on and four hours off is the usual watch pattern. It's not luxury and it's not comfortable. The boat rocks around a lot, particularly going into big waves.

"It is going to be tough but all the team are of a similar mind



set. The banter on board will be fantastic, with lots of jokes and laughs."

The UK Trade and Investment worker has also had to keep fit ahead of the race and has taken up Pilates to get into shape.

He said: "If I don't do this now, I will look back and think why didn't I do it? It's an experience of a lifetime, a massive physical and mental challenge but it will be a good experience. I wish I had been able to do it when I was 25."

Stephen will be heading home to Flackwell Heath from New York on June 22, before the final leg of the race heads back to English shores.

Visit mydonate.bt.com/fundraisers/stephenjones6 to donate and go to www.clipperroundtheworld.com to follow live updates on the race.





ashtonopticians

OPTOMETRISTS

Your independent practice in Flackwell Heath for value, style and personal service

- NHS and Private Eye Examinations
- Digital imaging and OCT scanning
- Behavioural Optometry & Vision Therapy
- Wide range of NHS, budget and top designer spectacles
- Contact Lenses
- Prescription and non prescription sunglasses
- Specialist sports eyewear
- All types of contact lenses fitted and supplied

01628 530420 www.ashtonopticians.co.uk

Mark Ashton BSc(Hons), MCOptom. Ros Ashton BSc(Hons), MCOptom.
1 Acorn House, Straight Bit, Flackwell Heath



JACQUI JONES

PERSONAL TRAINING

Fed Up Being Overweight & Unfit?

Want To Kick Start Or Improve Your Fitness Regime?

I Can Help You!

Fully Qualified Personal Trainer

For A Free Consultation
07595223314

www.jacquijonespersonalfitness.co.uk
jacqui@jacquijonespersonalfitness.co.uk
**Train at Home or at Private Gym
In Flackwell Heath**

fairfield framing

Bespoke picture framers
in Bourne End

01628 529646

07976 883856

debparrish@aol.com

Established since 1998

Ridgeway Property Services

- * Boilers * Heating * Plumbing
- * Natural gas and LPG servicing, installations and breakdowns
- * Toilets, hot water cylinders, tanks, overflows, blocked drains, guttering, waste and drain pipes

Gas Safe 27329

Tel Ian: 07973 289186
ijackson903@icloud.com

www.ijplumbingandheating.co.uk



TECS 19 Ltd

Pest Control

• Wasps
• Insects

• Rodents
• Foxes

• Rabbits
• Birds

Please Call

Tel: 07979 808809

tecs19ltd@gmail.com

A small move, but big changes for Bourne End Jewellers...

Thankfully one of the Bourne End shop changes mentioned in our cover story isn't a closure, but a move from one premises to another bigger and better one.

Bourne End Jewellers, which has been a part of our village for more than 30 years, will soon be housed in the former Hawkinsport store just a few doors along, and the move means the Bull family business can now expand and offer a much wider range of services and brands.

Richard and Julie Bull, who started the company together, now also have their daughters, Kate, Jessica and Lizzy, working alongside them. They are all looking forward to having the additional space the new premises will provide.

We'll take a look at the smart new premises in the next issue, but *Target* spoke to the family before the move.

Jessica told us: "We've been in our current premises for over 30 years and in that time we've grown from a single goldsmith to four full time goldsmiths. We need more space!"

Richard, who started out as a fine silversmith and spent many years making bespoke silver-cased carriage clocks for clients and other jewellers throughout the South East, told us: "We will have a dedicated consultation area in the new shop. This will allow privacy for clients

looking for something special or discussing their bespoke jewellery designs.

"Our new jewellery workshop will give us the space we need to expand the commissions side of the business as well as having the space to offer antique jewellery pieces and silverware that our customers have been asking for."

Daughter Jessica added: "We are unique in the brands that we offer. We source some beautiful fine jewellery from Italy and now, with the additional space, we can look towards stocking more diverse brands giving everyone the display spaces they deserve. We are excited for both customers old and new to see what the new shop will offer."

The shop will feature existing designer jewellery brands such as Alex Monroe, Daisy London, Coeur de Leon, Kit Heath, Radley watches, Citizen watches and Daniel Wellington, as well as the exciting addition of Claudia Bradby, pearl jewellery as worn by Helen Mirren.

"We will also be expanding our current handmade fine jewellery range, headed up by Lizzy, one of our goldsmiths. We are proud that all of our diamond engagement rings are handmade on site and having more space will allow us to increase our range," added Jessica.

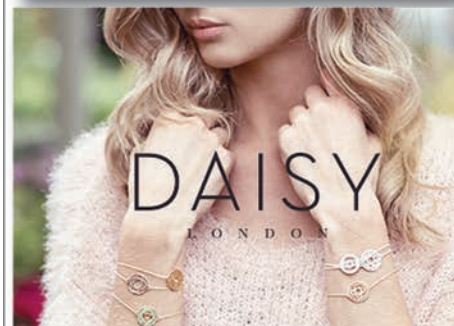
The family also plan to hold special



Richard and Julie with daughters Lizzy (left) and Jessica and their doggie family

shopping events at the new store which is being designed from scratch to reflect the family's vision of a truly unique personal jewellery shopping experience.

We look forward to seeing what's in store!



Bourne End Jewellers

We will be moving this Spring to our new store just a few doors away from where we are now.

Our brand new shop has been designed to reflect our vision of a truly unique and personal shopping experience.

We look forward to welcoming all our customers, old and new.

01628 527022

www.bourneendjewellers.co.uk



Support your local shops and businesses

TAKE YOUR TARGET...TAKE YOUR TARGET...

It seems many of you are now remembering to *TAKE YOUR TARGET* with you on holiday or to mark special events! Thanks for sending in your pictures...Keep them coming!



Myanmar (formally Burma)

David Davis wrote: "We were in Myanmar (formally Burma) in January and took our *Target* along.
 "This is my wife, Lesley, with local people from Ngapali, a village on the coast of the Bay of Bengal.
 "More than 85% of the people of Myanmar are devout Buddhists and so temples, pagodas and stupas abound everywhere.
 "The visit took in Yangon (formally Rangoon), Bagan, cruising on the Irrawaddy river, Mandalay, Inle Lake and Ngapali.
 "While there, the new government was sworn in following the successful election in 2015 of the NLD led by Aung San Suu Kyi who had been freed from house arrest soon after the 2010 election."



China

Pat and Grahame Jones, of Highfield Road, Bourne End, took their copy of *Target* on a grand tour of China for the month of September 2015.

Pat wrote: "We visited Beijing, Xian, Yangtze River, Chengdu, Kunming, Dali, Guilin, Yangzhou, Hangzhou, Suzhou and Shanghai. This photo was taken in Guilin where we saw the cormorant fishing on the Li River.

"It was a very interesting tour especially, the Great Wall, the Terracotta Army, the Three Gorges Dam and the pandas, while Dali was the most relaxing. We saw some magnificent scenery, sites, museums and shows."



The retirement savings you didn't know you had

Do you have retirement plans you hope to achieve? Or parents whose retirement income is not enough? Have you any home improvements to make or family members you want to support financially? Perhaps a dream destination to visit?

In 2013 more than 19,000 homeowners accessed an average of £60,000 of their property value to spend as needed while remaining the full owner of their home and making no monthly repayments.

This is a Lifetime mortgage. To understand the features and risks please ask for an illustration.

A Lifetime mortgage is a form of equity release which enables homeowners aged 55 and over to access their property wealth. Equity release can affect your entitlement to state benefits and grants.

A typical advice fee of £1,295 is only payable upon completion of a plan. Equity release may affect the size of your estate over time.

Since 2010 over 19,000 people have been forced to sign a "Pay when you die" contract with local authorities for their care - on average £75,000 per person. *Our equity release provides specialist legal advice to protect you and your estate.

Source 1: The Telegraph, 2014 * Source LV

Your home can play an important role in helping you achieve your plans

Features:

- Release equity tax free from your property
- Retain 100% home ownership
- Option to guarantee an inheritance
- No monthly payments unless chosen
- Never owe more than the value of your home

Other uses for equity release:

- Supplement your income
- Boost your business
- Pay off a mortgage on any property

ATTFIELD JAMES Financial Management Ltd
Swan House, 4-6 Market Street, Maidenhead, Berkshire SL6 8AB
Telephone 01628 623600 Fax 01628 773770
email: abattfield@aol.com
www.attfieldjamesfinancialmanagement.co.uk

TAKE YOUR TARGET...TAKE YOUR TARGET...



Georgia, USA

Local author Quentin Falk wrote "I jot these lines from Dahlonoga, Georgia, USA where for the past seven weeks – of 16, in total, for the duration of the Spring Semester – I have been a Visiting Professor of English at the University of North Georgia, about 70 miles north of Atlanta. It's a little over 4,000 miles from Little Marlow, where I have now lived for exactly 50 years.

"The invitation to teach for a full semester flows from my appointment back in 2013 as the then newly consolidated university's first Visiting Author. A year later I was back at UNG - one of America's six military universities although fewer than 10% of the students are actually in the Corps - when the University Press re-published a revised and updated 4th edition of my first book (from 1984), *Travels in Greenland: The Cinema of Graham Greene*. The pic shows me with the main campus behind and, specifically, the cannon, which is fired ceremonially at 5pm every afternoon, accompanied by a bugle call."

← The O2

In January Bourne End Academy student and member of Bourne End Scout Group, Libby Gould (13), completed the challenge of walking over London's iconic O2 arena to help raise money for the Help for Heroes charity.

On this sunny yet windy day Libby, together with her mum, Caroline, and grandparents, Roger and Janet, joined a small group of other keen adventurers, each with their own agenda as to why they wanted to complete the climb. After a safety talk and demonstration, all donned their protective clothing, special shoes and a secure harness which, during the climb, attached the adventurers to a safety cable.

To protect the building's external structure, the route over the building uses a specially raised rubber walkway. The initial part of the climb was at a 30 degree angle which was challenging as the walkway resembles a trampoline and is very springy. It took great concentration to navigate it.

Soon the climbers were getting acclimatised and able to briefly look around and appreciate the incredible views. They watched planes taking off from City Airport and the cable car going across the Thames. The climb steadily progressed until they reached the summit and were able to unclip and move around looking at London from all angles.

They saw Greenwich, Crystal Palace, Thames Barrier, and Upton Park Football Stadium, home to West Ham, to name a few. The crowning glory was watching a naval frigate coming slowly up the Thames to Victoria Docks with its water cannons in full flow. The weather was good and the wind in their hair heightened the exhilaration. The whole experience was brilliant and they raised £100 for Help for Heroes.

Banff, Canada

Joe Flynn wrote: "We have recently returned from a ski trip to Banff in the Canadian Rockies. Pictured centre is my wife Carol Flynn, who is the Bourne End Pharmacy manager at Lloyds and the snap includes our three boys who were all born locally and grew up in Bourne End. Two of them now reside in Australia but joined us for the trip as it was part of our celebration of Carol's Big Birthday!

"They always make a point of reading the Target when they are back home to see what is going on locally. Carol thought that she would surprise them by taking a copy with her for them to peruse."



Sapphire

Elegant dresses

For hire and sale:

- Evening
- Prom
- Parties
- Awards Dinners
- Cruises

For sale only:

- Mother of the Bride/Groom
- Bridesmaids
- Special Occasion

Co-ordinating hats, head-pieces, shoes, bags and jewellery

Open 9.30 am – 5.30 pm,
Monday – Saturday

Out of hours by appointment:
Sunday

11-13 Wycombe Lane, Wooburn Green, HP10 0HD
Tel: 01628 530 516 www.sapphiredresses.co.uk



Ivory Belle at Sapphire

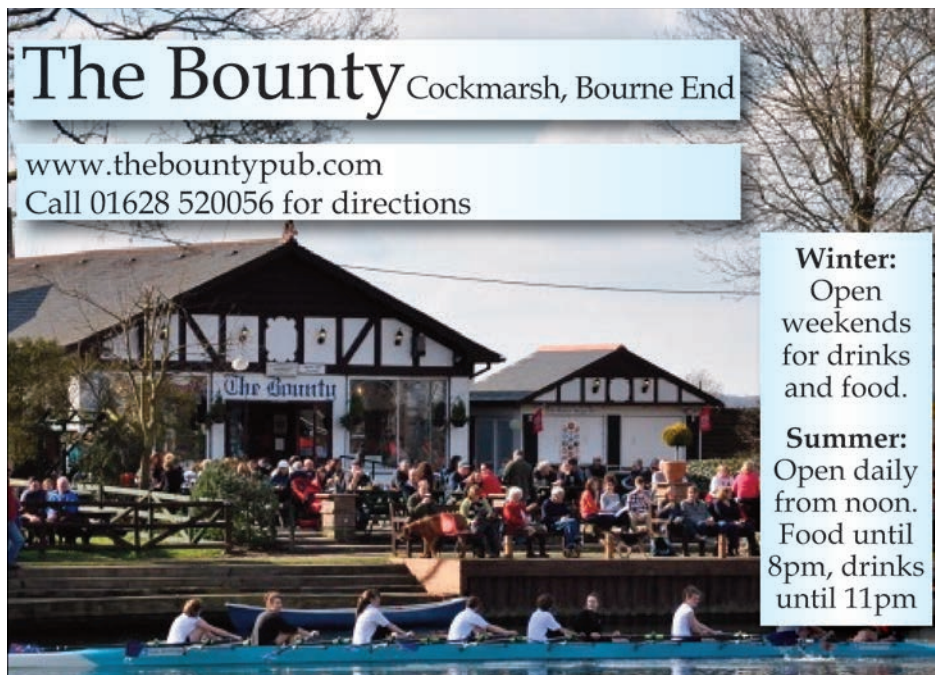
Bridal wear. Book an appointment at
www.ivory-belle.co.uk
or call: 01628 530516

Please follow us on Twitter @sapphiredresses
Please like us on Facebook sapphiredresses

The Bounty Cockmarsh, Bourne End

www.thebountypub.com

Call 01628 520056 for directions



Winter:
Open weekends for drinks and food.

Summer:
Open daily from noon. Food until 8pm, drinks until 11pm

The difficulty in life is the choice



legendary rock 'n' roll hall of famers Frankie Valli & The Four Seasons! I'm sure I wasn't alone in not having high expectations at just £15 a ticket.

But boy were we in for a treat. The four singers really gave their all and I doubt would have played their parts any more enthusiastically had they been standing on a West End stage with their slick choreography, perfect harmonies and phenomenal tunes.

I've seen The Jersey Boys in the West End and while it may have had a bit more glitz, backing and props, everything else was the same for this pared-down version of the show.

Great singing, unbelievably catchy songs which we could (and did) all sing along to. Sherry, Can't Take My Eyes Off You, Beggin', Big Girls Don't Cry, Bye Bye Baby, December 63 (yep, they really don't write them like that anymore) and many, many more.

I LOVE musical theatre and have seen many great West End shows over the years. But it is ridiculously costly and a bit of a faff getting there, usually involving a station car park charge, train, taxi and a meal.

Now I'm not saying that the Jersey Guys was as good as a London show, but it was a great night out and so convenient! I sincerely hope that as well as taking pats on the back for organising it, the Events Committee of Bourne End Community Association will quickly start planning their next show.

I vote for more musicals, or comedy.

Our community centre has a great hall, good lighting and sound and a comfy bar... everything that's needed for some more great nights of entertainment.

I, for one, will be working my way back to you for more please.



Jersey Guys

Review by Debra Aspinall

Oh What a Night! And what an absolute treat to enjoy a top-notch evening of entertainment without having to shlock into London.

We all settled down with our drinks and snacks (some taking their "picnics" to a whole new level) and eagerly awaited the arrival on stage of the Jersey Guys who, on their website, claim to be the UK's hottest, freshest tribute act to the multi-award-winning Broadway and West End Musical 'Jersey Boys' and the

Bourne End Electrical

All your electrical needs catered for

Quick and efficient service

- Test & Certification**
- New Fuse Boards**
- Upgrades & Repairs**
- Interior & Exterior wiring**
- Outside Security Lights**
- Switches & Outlets**

Ring Stephen on
01628 850968
07790 546975

advancedentalservices.co.uk Bourne End 01628 525223

Tip the **balance**
in favour of good dental health:

advance dental services

1 Station Court Station Road SL8 5YP

RELIABLE PROFESSIONAL SERVICE FOR:

- RODENTS • COCKROACHES • ANTS • FLEAS
- BED BUGS • FLY KILLER UNIT • BIRD CONTROL
- WOODLICE • GREY SQUIRREL • WASPS & BEES
- FLY CONTROL • FLY SCREENS

EMERGENCY CALL OUT

DOMESTIC & COMMERCIAL • FREE SURVEY • FULLY INSURED

Don't be bugged ring us now

23 Years Experience
Unmarked Vehicles

01628 525025

Secondary Maths Tutor

Qualified Maths teacher in Bourne End for one to one help.

- Common Entrance
- Key Stage 3 and GCSE
- AS/A Level

T: 01628 531521
E: kath.acres@spadeoakfarm.com
www.spadeoakfarm.com/Tutors

Bourne End & Cookham Probus Club By John Daymond

In January Tom Way, a professional wildlife photographer, talked on Wildlife Photography Around the World, showing excellent photos and giving an insight into his fascinating lifestyle.

We saw photos of orangutans, including many close-ups, taken in Borneo and Malaysia. Next, from Sri Lanka, Tom achieved memorable pictures of a blue whale diving. On to the Falklands for penguin studies before seeing elephants, lions, leopards, gorillas, meerkats and other animals, taken during visits to Uganda, Botswana and Kenya. Tom's career was almost aborted when a disgruntled hippopotamus nearly capsized his boat, sending his equipment to the bottom of a lake.

The February meeting was our AGM, with an address from retiring chairman Bill Leftwich. Richard Royall was elevated to vice-chairman, Roger Gould was welcomed as a new member, and the remaining officers were re-elected for another year. Bill Leftwich then installed our new chairman John Marshall. To join our Probus Club contact Brian Print on 01628 523739.

Inner Wheel Club By Diana Hyde



In February Linda and Mark Hughes kept us spellbound with their investigations into the paranormal. This unusual topic sparked several members to relay their own unexplained experiences to the meeting.

This was a change from our published speaker, who was unexpectedly not available.

Half a dozen members (pictured) spent a happy morning helping to pack bags as part of the Inner Wheel's 'School in a Bag' Project, which sends back packs of school stationery items to children in Africa.

District Chairman Pat Briggs was the guest at our March meeting which included a light lunch.

Facebook is the subject of a workshop to be led by Rotarian Richard Monger to help us unravel the mystery of this facility which our grandchildren find so essential.

Little Marlow & Well End WI By Judy Wilson

Suzanne Brown gave a very interesting talk in February on her experiences as Mayor of Marlow, which ranged from swan-umping to driving sheep over London Bridge. Her talk was beautifully illustrated by the hats she had worn for different occasions, and we all had an opportunity to try them

on, although not necessarily wishing to have the responsibilities she had taken on when wearing them.

In March Dr Geoffrey Farrer-Brown spoke on Medical Detection Dogs, which can be trained to sniff out cancers through both urine and patients' breath samples as well as support diabetic sufferers in predicting the onset of possible comas. It was a most interesting and entertaining talk.

At the Carrington Group meeting on March 17 the speaker was to talk about Windsor Great Park, Valley and Savill Gardens. We are planning our summer outing to include a lunch on the Thames and a visit to the gardens.

We learnt that we are to lose two of our long-standing members through ill-health. One of them had spoken movingly about how our movement had enriched her life and given her so much pleasure.

The two resolutions to be debated at our Annual Meeting address the problems of food waste and food poverty and appropriate care of people in hospital with dementia. Our next meeting is on April 5, visitors welcome. Contact 01494 438380.

Bourne End WI By Kath Acres

Frances Benton's talk about her Passion for Pearls was thoroughly enjoyed at our February meeting. In March Louise Walton wowed us with her posh hats and took us through the history of millinery.

In April we look forward to hearing about life as Commodore of HMS Britannia and in May a talk on the River Kwai Railway awaits us. We meet on the first Thursday of the month at St Dunstan's Church Hall at 7.30pm.

Our Craft and Chat Group meets in the library on the third Tuesday of the month (April 19). Visitors are always welcome.

On Friday April 29 we (together with Bourne End & Wooburn WI) are supplying a Ploughman's Lunch at the Community Centre in support of a Women Walk The World Treasure Hunt around Bourne End. It starts at 10.30am and tickets (including lunch) are £9.50.

We are delighted that The Mikron Theatre Company return to perform their new play Canary Girls in Bourne End on July 20 at 7.30pm. For tickets £10 or information about activities email bournendwi@yahoo.com or call 01628 531521.

Bourne End and Wooburn WI By Janet Spill

In January Mary Ann Leader gave an interesting talk on South Bucks Hospice, their history, services they provide and volunteering opportunities. The procedure for the group's enlargement was then finalised with the name Bourne End and Wooburn WI being chosen.

February saw the first meeting of the newly expanded group with tea and delicious cakes. We enjoyed a humorous talk by Bob Harding-Jones entitled 'Laughter in the Village', which included anecdotes and poems gleaned from personal experience.

A talk by Gavin Henderson, an archivist from the

John Lewis Heritage Centre in Cookham, was in March. Meetings are held in St Dunstan's Church Hall on the second Monday of the month at 2pm, visitors warmly welcomed.

Glory Mills Bowls Club By John Palfreyman

The club has entered two teams in the Bucks League and one team in the Chiltern & Thames league, as well as planning 26 friendlies with local teams. The club is looking for new members for the coming outdoor season which commences in April. To join a club that puts its members first, can provide you with regular games and provides coaching for beginners, please contact Shirley Churn on 01494 673859 or email shirleychurn@btinternet.com.

Bourne End & Cookham Rotary Club By John Dunsterville

We enjoy working in our club to brighten up lives both here and abroad. On April 7 with the help of Jean Peasley we will be holding a street party at Bourne End Community Centre. Tables will be laid out with tea and goodies for the elderly and we will entertain them with the old songs to celebrate our Queen's Birthday.

On Friday April 15 a charity golf day at the Berkshire Golf Club will raise funds for the Starlight charity for terminally sick children.

We are continuing our work abroad with the Zambia Project and the Nepal earthquake disaster fund with the Gurkhas, with help from local schools.

We were proud to reward 23-year-old Rachel Gerrish with the Rotary Paul Harris award which is our highest honour for her tireless work in charities both here and abroad. She also teaches cooking to local infant schools and will undertake virtually any challenge in order to help others.

She is President of the Rotaract Club (18-30-year-old Rotarians) and has spoken at conferences both here and abroad, rubbing shoulders with heads of state. She is the youngest ever to receive this prestigious award. Jean Peasley is also a recipient of the award.

We now have a programme called Friends of Rotary which allows those who cannot commit to becoming a full Rotarian to join us on our exciting projects. If you would like to consider this, contact Maureen Campbell on 01628 850595.



Rachel Gerrish receiving her award from president Sue Pomeroy

Little Marlow Cricket Club *report by Richard Tedham*

With a new season fast approaching cricketers of all ages and abilities are preparing themselves for battle. At the top end of the game this might involve intensive gym work, strict physical assessments and short tours to warmer climes. At Little Marlow's level a few gentle indoor net sessions, followed by a couple of bevies is far more likely. I don't think many of our players will jump into iced baths or have, or wish to have, their body fat index measured.

So, prospective new members should have no fears they will be overburdened with unreasonable demands upon their athletic prowess. All are very welcome. Our two Saturday senior teams will be gunning for promotion from their respective divisions in the Marrant Chilterns League, while the Sunday outfit will contest its familiar list of 'friendlies'. There will also be several midweek matches.



Play cricket in Little Marlow!

We are inviting players of all ages and standards to come and join us in a picturesque setting with great pitches. Cricket at Little Marlow goes back to 1857 and the Bradish Ellames Recreation Ground is home to a Club whose members enjoy cricket and camaraderie in equal measure. Outdoor nets start at the ground in early April just before the season's matches

Come and join us

- We are keen to encourage local people to come and play really enjoyable village cricket in a great setting, and also anyone interested in umpiring or scoring. All would be made very welcome, so if you or someone you know wishes to join us please do get in touch with Steve.
- Little Marlow competes in the Marrant Group Chilterns League on Saturdays, fields a competitive Sunday team and runs a junior section for our stars of the future! 6-10 yr olds are invited to come and try their hand at our wonderful game.
- www.littlemarlowcc.co.uk

Contact: Steve Shore on 07723 445125
or e-mail: shorestephen@hotmail.com




Outdoor practice begins in early April, prior to the first games on the 9th and 10th of the month.

Please visit our website at www.littlemarlowcc.co.uk or contact Steve Shore on shorestephen@hotmail.com or 07723 445125 for further information.



With a number of young players having made significant contributions to England's recent Test series win in South Africa, the benefits of encouraging the youngsters is clear for all to see.

All those big names had to start somewhere, usually with their local club's youth section.

Our junior colts section, established last year in association with professional coaching outfit Future Legends, is coming along apace.

Several lads enjoyed their first taste of competitive cricket in Marlow's Big Bash Tournament and this summer will contest matches in the under 9/10 age groups.

Two recruitment sessions at The Redgrave Centre in Marlow will precede the start of regular Monday evening training at the ground.

You never know, one day Little Marlow might produce its first international cricketer. Steve Shore or Youth



BEAUTIFUL TREES MAKE A HOUSE A HOME.

- Tree & Shrub Pruning
- Cabling & Bracing
- Fertilisation & Soil Care
- Insect & Disease Management



FOR THE LIFE OF YOUR TREES.



Please Call 01494 677 889 or visit BEACONSFIELD@BARTLETTUK.COM

The Pentagon Clinic

Osteopathy and Physiotherapy

Stella Halpin BSc.(Ost.)
David Turner B.Ost.
Morag Bowie M.C.S.P.M.H.P.C.

The Annexe
Bourne End Day Care Centre
Wakeman Road, Bourne End
Bucks SL8 5SX

email: info@pentagonclinic.co.uk
www.pentagonclinic.co.uk
Tel: 01628 533200

Our highly qualified and established Clinical Team continue to provide Osteopathy, Physiotherapy and Sports Massage for all ages. We have a wealth of experience in the assessment and treatment of a wide range of musculoskeletal conditions.



Development Officer Guy Thistlethwaite, guy.thistlethwaite@gmail.com / 07557 307977, would be delighted to hear from the parents of youngsters aged six to 10 wishing to join our happy throng. Pictures: The LMCC colts at Marlow's Big Bash, above Steve Shore batting and left, Andrew St Maur bowling.

Guides World Thinking Day 2016

On Sunday February 28, Bourne End Academy saw more than 120 Girl Guides from Bourne End, Marlow and Flackwell Heath pass through its doors to celebrate World Thinking Day 2016.

This day, celebrated since 1926, is an international day of friendship, speaking out on issues that affect girls and women and fundraising for 10 million Girl Guides and Girl Scouts around the world.

Rainbows, Brownies and Guides took part in a number of crafts and food tastings from World Guiding Centres.

This year Bourne End District represented 'Our Chalet' in Switzerland which is a World Guiding Centre.

Everyone got to take part in various crafts and food tasting including chocolate and cheese fondues, making cuckoo clocks as well as making paper Swiss army

knives. Other districts provided a variety of activities from around the world including African drumming, Bollywood dancing and of course, a fabulous traditional afternoon tea provided by our Trefoil Guild.

A massive thank you goes to Di Morrish who is stepping down from being District Commissioner after five successful years. She will continue to run her Brownie pack as normal and her role will be shared between all District Leaders.

If you'd like to register your interest for your daughter to join Guiding in Bourne End, or if you are keen to volunteer at weekly meetings, please visit the website link below and a member of the team will be in touch www.girlguiding.org.uk/get_involved/volunteer/register_our_interest



Future of Our Village

At the FoOV AGM, which was attended by members and about 15-20 villagers, Doug Meredith was re-elected as chairman and other posts were filled as before. We very much hope that people found the experience informative.

Steve Underwood came along from Transport for Buckinghamshire and talked about specific problems outside people's houses and the build-up of parking problems around the station.

At the latest FoOV meeting, an update on the Community Led Plan was presented and will be published on the community association website and on the parish web site. A second storey on the Octeville Place (Wakeman Road) car park was suggested and put into the plan.

The problems of funding extensions to the 20mph zone and of improvements near the zebra crossing on the Marlow Road were covered.

The changes to the local shops were highlighted with a number closing or changing hands. Part of the problem lies in the head offices of companies with no attachment to Bourne End. Problems over Slate Meadow are covered in the residents' association article on page 3.

The parish council has concerns about some services being handed down by BCC because of the increase in responsibility for the parish council and the probable need to increase the precept.

Powerline HOME SERVICES



Electrical work



Plumbing work



Contact:
Peter Druce 07748 836359

NO JOB TOO SMALL/FULLY INSURED

BASL BUILDING & MAINTENANCE LTD



Mathew & Paul Billingham - *Seventh generation builders*

t: 01628 298185 w: www.BASLbuilding.co.uk e: Mathew or Paul@BASLbuilding.co.uk

We undertake any and all work to your home to a high standard and cost effectively

CHRIS GATES

Decoration & Repair Services

- *Top quality interior and exterior decorating
- * Interior carpentry, plastering, coving and tiling
- *Repair and restoration of exterior woodwork
- *Box sash window repair and refurbishment
- *All types of glazing repairs
- *Fully insured with references available on request

For advice and a free estimate

Tel: 01628 529698

Mob: 07802 457274

Bourne End

Bourne End Community Library

by Inka D'Agostino, library manager

Shakespeare anniversary events

April 23 is the 400th anniversary of Shakespeare's death. To mark the occasion we are also hosting the following events:

'Shakespeare Rattle'an'Roll' on Wed April 27

(7.30pm to 9.30pm) is a 'lightning tour through Shakespeare's politics', with short excerpts from a dozen plays linked by a narrative.



Compiled by Gabriel Chanan, the excerpts are acted by the Rattle'an'Roll Players, who launched the show last year at the Windsor Fringe with great success.

Using comedy, tragedy and history, the first half is about gender and the second half about monarchs. There is even a visit by Shakespeare's ghost!

Ascot Matters said this was: "A thoroughly enjoyable couple of hours. A whole new way of looking at what Shakespeare was about."

Tickets at £9.50 (£8 for concessions) are available from the library

Daytime talk on Friday April 22 (10.30am to midday)

is called *Shakespeare's Demons*. Shakespeare's treatment of women and minorities has been endlessly controversial. In the early plays nearly all the women characters are either active demons or passive angels. Later, women characters emerge who are both assertive and healing. What was Shakespeare – or his audiences – afraid of?

This talk by Gabriel Chanan looks at the treatment of gender, ethnicity, ghosts, witches and more.

The events are based on Gabriel's new book *Shakespeare and Democracy* (Troubador, 2015) which will be on sale with a special discount.

Splitting the spectrum: inspirations in colour'



Paintings and prints by Aurora Spain.

Exhibition at the library from April 6 to 30. Entry free.

Private view: Friday April 8.

Talk: Wednesday April 13.

A feast of

passionate colour and highly original design is the hallmark of Aurora's work. Motifs based on swarming fish, blossoming flowers and other natural forms both on land and sea are treated in a mixture of semi-abstract and semi-representational style. Ascot-based Aurora is an accomplished painter and art tutor who produces work to delight the eye and uplift the spirits.

All are invited to come along and see paintings from her 'Touchables' collection; sculptural pieces that are designed to be both viewed and touched. Other recent work includes a series of silk paintings, a technique which she now teaches alongside other skills.

Aurora invites you all to the private view on Friday April 8 from 6.30pm to 8.30pm to browse, chat and enjoy a glass of wine.

On Wednesday April 13 from 11am to 12.30pm she will be giving a talk on the history of pigments, and which reliable and effective ones to use today. This will be of interest to art lovers and budding artists alike – admission free.

For more information please call Aurora on 07710

349804 or email aurora.spain@talktalk.net. See also her website: www.saa.co.uk/art/aurora
The exhibition will be on during normal library opening hours but for opening times please check with the library.

At the end of February we said a fond farewell to Penny Wells (see picture page 17), who after 16 years of working at Bourne End Library, decided to retire and enjoy life to the full. Penny was delighted with the surprise farewell tea party.

She says: "Thank you all so much for a wonderful send-off, it was all quite overwhelming! Thank you all for the lovely necklace, more than generous gift voucher and fantastic flowers. You are all very kind."

I should like to take this opportunity, on behalf of staff, volunteers and our customers to thank Penny for all her hard work and support over the years and wish her a splendid retirement. We shall all miss her.

Finally for tickets or enquiries about the above events, or for any other events and room hire please contact the library on lib-boe@buckscc.gov.uk or telephone 0845 2303232.



A smiling Rosie O'Hagan shows MP Dominic Grieve around Bourne End Community Market at their February event which marked community market's fifth anniversary. The market, which is held on the second Saturday of each month in the library, has grown to include stalls selling everything from food to gifts. Check out the next one on April 11.

Community Market focus Buongiorno a tutti!

Bella Italia in Institute Road, Marlow is well worth a visit – offering a wide range of imported Italian meats, cheeses, wines and other Italian products.

The shop's owner Mr. Mauro Bernesi was born in Mola - site of the former San Marino Grand Prix, but has lived in Marlow for the past 28 years with his English wife Barbara and they have two children and three grandchildren.

"We wanted to make a shop to serve the community better," says Mauro, "We felt that local residents would appreciate the chance to try real Italian products without having to pay exorbitant prices."

"We attend the fantastic Bourne End Community & Craft Market and thank the organisers for all their support as well as the customers who we see returning to sample and buy more of our products from our stall."

So come along to BECCMARK on the 2nd Saturday of each month in Bourne End Library from 10am to 1pm to meet Mauro or email maurobernesi@hotmail.com. For information about the market email rosieohagan@me.com

Hawkinsport

TEAMWEAR SCHOOL UNIFORM

SPORTSWEAR CORPORATE WEAR

Tel: 01628 819242 sales@hawkinsport.co.uk

Unit 10a Wessex Road Industrial Estate,
Bourne End, Bucks, SL8 5DT

JG dance

Jeannine Greville Dance Academies
& Theatre College

2½ - 18 years, Girls & Boys
Beginner classes in Ballet,
Jazz, Tap & Acrobatics
FREE TRIAL LESSON

RAD, ISTD & LAMDA
Classes up to Advanced 2
Twice Yearly
Theatre Performances

Call: 01491 572000 email: info@jgdance.co.uk

BOURNE END - Wednesdays after School WWW.JGDANCE.CO.UK

**QUALIFIED
CARPENTER/HANDYMAN**



- 25 years experience
- Reliable and friendly service
- All types of carpentry
including:
 - Fitted kitchens
 - Doors, skirting & architraves
 - Flooring
 - Fitted wardrobes
 - General handyman/maintenance work

For a free & competitive quote call
Paul on 07857 074523 or 01628 523314

C.O.D.GROUNDWORKS
Specialists in all
types of Groundwork

- * Paving
- * Patios
- * Fencing
- * Block Paving
- * Drainage
- * Driveways
- * Patio Cleaning
- * Concreting

NO JOB TOO SMALL
FREE ESTIMATES
Tel: 01628 528637
Mobile: 07778 371552

Thames Music Tuition Guitar, Piano & Flute



All ages/abilities welcome
Tel: (01628) 525140
Mob: 07920 165619

www.thamesmusic tuition.co.uk

Painter & Decorator
N. W. Upward
2 Fisherman's Way
Bourne End

All wall coverings hung.
Glazing & Wall Tiling.
Estimates Free.
01628 528921

YOGA WITH LINDA

Monday morning, Tuesday evening
and Wednesday lunchtime
Bourne End
Ring: Linda Jolliffe 07503212815

To advertise in *Target*
call **01628 525415**
or email

advertising@targetmagazine.org.uk

Stacey

**Home Visiting
Foot Health
Practitioner**

**A new Foot Health service
available in your area**



Services provided -

- *First consultation Free*
- *Routine nail care*
- *Hard skin, Corn and Callus*
- *Verrucae treatment*
- *Ingrowing toe nails*
- *Fungal nail treatment*
- *Elderly care home visits*
- *Home Visits*
- *Local, Professional, Friendly Service*

**For further information or to
book an appointment please
contact Elizabeth Stacey on**

07817 873592

or email - lizstacey70@gmail.com

Elizabeth Stacey MCFHP MAFHP

ALLAN WISE & CO
ROOFING SPECIALIST

Complete Roofs or Repairs
Large or small jobs
Estimates FREE

01628 525740

MANKIND
MENS HAIRDRESSING

Tel: 01628 528974

15 The Parade
Bourne End
Bucks
SL8 5SA



R S HALL UPHOLSTERY

31 years experience

ALL UPHOLSTERY WORK UNDERTAKEN

- * Re-upholstery
- * Sofas & Chairs
- * Loose Covers
- * Antiques
- * Pubs & Clubs
- * Schools
- * Hospitals
- * Office Chairs

Large
Contracts
Over 300
fabrics
available
Free
estimates

*Also fabrics at competitive prices,
upholstery sundries and all
sizes of foam*

Contact Bob: 07809 140988
T: 01494 461481

E: contact@rshallupholstery.co.uk
www.rshallupholstery.co.uk

**MAINTENANCE &
LANDSCAPING**

Property Maintenance, Professional
Landscaping, Fencing,
Specialist Patios,
Paving, Tree Surgery, Etc.

DAVID J KIMBER, 01628 810361 07850 124241

Past times... by Barrie Penfold

Memories from Angela Telfer who has always been part of this community...



Angela Wood's young life was spent playing on the green in front of the family home in Kennet Road. She attended Claytons School when it was just off Station Road then did secretarial work – like many of her friends. Angela married Keith Telfer in 1971 and now they live on the boundary of the parish in Wooburn Moor. Her claim to fame is that she has entertained audiences over many years in the roles she played on the stage with the Forum Players at the community centre.

Do you have a first memory and how old were you at the time?

No sure how old I was but my brother Adrian was a toddler. I remember carrying one end of a carpet when we moved from a two-bedroom bungalow in Roman Way to a three-bedroom house in Kennet Road. We literally moved ourselves – carrying everything from the bungalow to the house.

Are any of your school friends still living locally?

Margaret Wellings, Penny Bishop and Gillian Russell – you can see all of us in the Claytons school photo above taken in 1958/59. [Let Target know if you also recognise yourself in the photo!]

Were your teachers strict? Were you a good pupil or did you get into trouble?

I always thought I was quiet, meek and mild, but I remember having a board duster thrown at me for talking in class. The shame of that lived with me for a long time.

What sort of games did you play with your friends?

What I remember most about those days was the feeling of freedom. We played rounders on the green, we played tennis in the road and if it was wet we played table tennis in our garage. In the summer there were cornfields up New Road – before the school was built. We roamed around Big Hill down to the railway and we loved to roll down the hill and make camps there.

What school or college did you go to after Claytons?

Lady Verney in High Wycombe and I did secretarial training there. There wasn't so much pressure on education then and people worked their way up through a company.

What was your first job?

A typist at Equity and Law in High Wycombe. My brother Adrian followed me there. It was a big company with a wonderful social club. I was there 10 years, until I got pregnant with son James.

How old were you when you first joined Forum Players?

I was in my early thirties. At school I had loved drama and jumped at every chance to act. I just loved playing a part, learning the lines – everything about it.

Later I was on the committee then chairman. I also represented Forum on the council of the community association.

Are there any roles you remember with particular pleasure?

Outside Edge by Richard Harris was a very funny play. I

played Miriam the long-suffering wife of cricket captain Roger. It was a wonderful role. Another role was Ouiser in *Steel Magnolias* – she was a crotchety character but part of the group of ladies who supported each other through joys and sorrow.

Would you have ever wanted to live anywhere else?

I loved where I lived while I was growing up. To be honest I hanker after those days when there was a real village life.

Do you have to look after elderly parents?

At 90 plus my mother still lives in the family home. I see her very regularly.

Do you think your grandchildren might follow in your footsteps?

My son James was a Forum regular so I hope I might see his children, Scarlett (8) and Edward (5) enjoying something I have always loved.

Any other memories?

My father kept chickens in our back garden and one of my jobs was to collect the eggs. They used to escape and chase me up the garden path. The hens terrified me.

We got feed from the corn merchants called Websters opposite the station. What amazes me, even now, is that Dad would order the chicks through the post and they would arrive by train. How he knew when to collect them I have no idea but they always arrived safe and well. And all without a computer or the internet!



OUR LOCAL CHURCHES KEEP IN TOUCH

Community Church

Everyone is welcome at our Sunday services which start at 10.30am (refreshments from 10am). We're meeting at the Chapel on the Green, Wooburn Green on April 3, May 1 and May 29, and at The Meadows School on April 10, 17, 24, May 8, 15, 22.



Another CAP Money Course is starting on May 3 at 7.30pm. This course, run over three Tuesday evenings at St Peter's Church Loudwater, is designed to help you improve the way you manage money and deal with any debts. It is free and confidential: you don't need to tell anyone anything about your actual finances. 98% of people who have been on the course (49 out of 50) say they would recommend it to others, so how about giving it a try? Email peterlisle@outlook.com or call 07802 450069 for more information.

A special Sunday morning service is on Sunday May 15 – Pentecost, a celebration of the “birth” of the Christian church, 10.30 to 11.45am at The Meadows School.

Everyone young and old is invited to join us for our bluebell walk and cream tea. The date will be announced soon on our website www.wooburngreen.org.

St Mark's Parish Church

As a church family we are concerned for the community at large and the Bourne End community is prayed for regularly. We are developing a Prayer Chain, which will help us identify and pray for those in need. Please contact the church if you would like us to pray for you, your family or friends.

We are excited to be able to bring 'Open the Book' to the local primary school, a programme that introduces children to Bible stories with a relevant application to everyday life.



Penguins, our church group for any child five years and up, meets every fourth Sunday in the hall at 10.30am with activities, Bible stories and crafts.

We continue to discuss and explore our faith using Pilgrim and other courses in a friendly relaxed atmosphere. Turn up at 35 Blind Lane on Thursdays at 7.45pm when refreshments are served.

Many familiar and local faces appear at our regular 10.30am Sunday morning service where there are hymns, songs, a sermon and prayer.

We are currently exploring the Prophets of the Old Testament. Pathway takes place on the second Sunday of the month at 10.30am for all ages. The Annual Parish Church Meeting is

open to the community and is on Sunday April 17 at midday in the church, with lunch.

For further information contact the Rev Janet Binns 01628 523046, our administrator Alison Gray 01628 298022 or for hall hire Michael Payne 077430 37938.

St Paul's Church and St Mary's Church Wooburn

We were unable to be back in the church for our Easter services as we had hoped, but reroofing work should be finished within the next few weeks and a Service of Celebration will be held on Pentecost Sunday, May 15, led by the Bishop of Buckingham.



We are also planning to have an open day towards the end of May so that local residents can also see the completed work, and to launch our new 'Friends of Wooburn Parish Church'.

Weather permitting we will hold our Teddy parachute jump from the top of the newly reroofed tower on Sunday June 26 – further details to come.

The Church Hall and garden in Town Lane, Wooburn are available for bookings, email stpaulswooburnparishoffice@gmail.com or visit stpaulswooburn.org.

St Nicholas' Church, Hedsor

We have our Communion service at 9am each Sunday except the second Sunday of each month when we have Pathway, our special family service.

We invite all who are interested in old church music to a Gregorian Chant workshop on Saturday April 9. This is a fun day led by our choirmaster, Dr Peter Wilton, culminating in an evening service when you can show off your new skill. Contact Ruby Lunn on 01628 522721.

On Sunday May 29 there is an Open Garden Day around the gardens near to Hedsor. Please look out for the posters, it's not to be missed.



Cores End United Reformed Church

On Saturday April 2 we have an Easter Fun Day for children aged 5 to 11 with craft, dancing and singing and treasure hunt, and children go home with a bag full of things they have made.

In Christian Aid Week, May 15 to 21, we focus on the poorest of the world.

Two of our Church members, David and Rosemary Reynolds recently moved from Wooburn to Bourne End. Rosemary is disabled and David is visually impaired and you may have seen them in the village; Rosemary directing and David providing the manpower. But they now have a new addition to their household — Max, a young working

black labrador. If you see David and Max in the village, do say hello but please don't fuss Max as he needs to concentrate on his task.

Our Youth Matters in a Digital Age workshops for young people and parents/carers began with a session by author Dr Bex Lewis about supporting young people to engage with social media in positive ways and the importance of open communication between parents and teenagers about what is seen and done online.

Clinical Psychologist Dr Alison Wheeler led the second workshop on developing emotional resilience and introduced a number of practical coping skills to manage difficult times.

Community Policing facilitated the final workshop in the series on keeping safe. Feedback has been generally very positive and we thank all those who supported this exciting initiative.

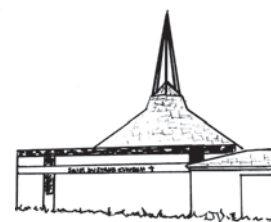
Looking ahead we have a concert arranged for June 18 and a jazz concert for later in the summer.



St Dunstan's Church

The Friday Lenten lunches were once again well attended and raised £2,500 for CAFOD, thank you to all who came along and donated.

With Easter now behind us, we look forward to celebrations in June of First Holy Communion and Confirmation, for which our young people are busy preparing. Candidates have been serving the community in various ways, as well as attending classes and workshops and going away on a retreat. We wish them all well.



St John the Baptist Little Marlow

At the end of March, we said goodbye to our curate the Rev Wendy Bull and wished her well in her new post as vicar of SS Anne & Peter in High Wycombe. At the same time, we welcomed the Rev John Smith as Deacon.

Quiz Night is on Friday April 15 at 7.30pm at the Abbotsbrook Hall, Well End. Tickets from John Norton 01628 482026, £10 to include supper and there will be a cash bar. Teams of four with profits to church funds.

Our Ascension Day service is on Thursday May 5 and a team service at 10.30am on Sunday May 29.

Visit www.4u-team.org for details nearer the time.

A date for your diary: Music in the Manor (Little Marlow) is on Saturday June 4. See website or ring 01628 525336 or 07775 957090.





centreTalks

Bourne End History

Ken Townsend

“from Spade Oak to Cookham Bridge”



followed by Q&A about the history of our village

Bourne End Community Centre
19:45 on Thursday 14th April

£5 (£4 for Ass'n members) on the door or £4 (£3 for members) in advance from the

Centre Office or the Centre Bar
www.bourneendbucks.com/centreTalks
A fund raising activity for B.E.(B).C.A.

Chess

The results for the Chess Congress will appear next time. The first team meanwhile are on course to win the Bucks League, the second team should get promotion back to the first division while the third team are mid-table in division two.

In the Berkshire League, the first team are in line for a third place finish and the second team are likely to finish higher than they have done in recent years. The final tables will be available via the Chess Club web site www.bucksvoice.net/bourneendchess. We revert to our summer timetable of monthly meetings from mid-May until September. You can contact our club secretary on 01628 486676 for details.

Darts

We are now in round 18 of the Winter League in which, sad to report, we had a narrow 6-5 loss to the Happy Union. This brought to a halt a streak of three wins and we are still in the lower half of the league table.

Following my previous report, in which I highlighted the difference between the raucous hollering of the professional side of darts and the friendly atmosphere of club darts, I was taken to task for using words which were too big. I promise not to let it happen again.

Nevertheless, I decided to confirm if what I said was true and went to see the match we played against Derhams B. I am happy to report we had a thumping 9-2 win, which must have been depressing for the Derhams side. When the match was over every one of the Derhams side made a point of seeking out every one of our players to shake their hands and thank us for our hospitality, vindicating my comments. Camaraderie still pervades match darts at club level.

You will remember I reported recently that the Arrow Man had retired from darts, much to our regret. Well the good news is that he was persuaded to turn out in our recent match against Derhams A and his win helped us to win 7-4.

Angling Club

news from the water's edge

We took a break during the winter months. The water's edge was on Sunday March 20th at Campbell's Lake at the Milton Pools.

This fish-packed lake can throw up some of the best fishing of the year. We had sunshine, rain, hailstones and extreme temperatures, but the fishing was good. The top weight was 44lbs and that was a bad considering.

The April match is on Sunday April 30th at the Pool which is an old club favourite. Hope to see you there.

The club's rejoining night and prize giving will be on Wednesday May 11 at the community centre. Rejoining is welcome to attend. Our matches are open to anyone considering joining, or if you are already a member please phone Terry the secretary on 01628 520000 of the locations and book yourself in – welcome you.

Angling is not just about the catch but about the time and immersing yourself in the beauty of the water.

FOR EVERYTHING

CENTRE OFFICE

01628 520000

OR EMAIL

office@bebc

BOURNE END (BUCKS) COMMUNITY ASSOCIATION

Membership costs and application form

- INDIVIDUAL MEMBERSHIP** over 18 years of age
- JUNIOR MEMBERSHIP** under 18 years of age
- FAMILY MEMBERSHIP** husband/wife/children of school age
- ASSOCIATE MEMBERSHIP** (outside the area of benefit)
- ASSOCIATE FAMILY MEMBERSHIP** (outside the area of benefit)
- SENIOR CITIZEN MEMBERSHIP**
- SENIOR CITIZEN FAMILY MEMBERSHIP**
- LIFE MEMBERSHIP** husband/wife/children of school age
- SINGLE LIFE MEMBERSHIP**

Annual subscriptions are payable on or after 1 January each year. Family membership carries one vote. Junior Membership carry no vote. Area of Benefit – includes Bourne End, Cores End, Hedsor, North Marlow, Well End, Wooburn and Wooburn Green.

APPLICATION FORM

Cut out and send or hand to: The Manager, Bourne End Community Centre,
Wakeman Road, Bourne End, Bucks SL8 5SX

NAME.....

ADDRESS.....

Email address:

TYPE OF MEMBERSHIP..... AMOUNT PAID.....



centreTalks

Do you have any items relating to the history of Bourne End? If so we would love to see them at Bourne End Community Centre at 19:30 on Thursday 14th April. Ken Townsend will give a talk “from Spade Oak to Cookham Bridge” this will be followed by the opportunity for people to ask questions about Bourne End’s past.



Station Road

Furlong Road

We would love to see anything you have that may be of general interest. Please email talks@bebc.org.uk with information about what you have or just bring it along.

£5 (£4 for Ass'n members) on the door or £4 (£3 for members) in advance from the

Centre Office or the Centre Bar
www.bourneendbucks.com/centreTalks
A fund raising activity for B.E.(B).C.A.

at the centre...

FOR THAT SPECIAL EVENT

Here's the main hall at the community centre set out for the 'Jersey Guys' show. Its facilities can be adapted for a wide range of occasions. It's perfect for wedding receptions, very special celebrations, fund raising events, concerts and shows.

Double doors lead out onto a patio area which adds extra space or would be ideal for a hog roast or barbecue. Just off the hall is a kitchen with cookers and work surfaces. The centre bar is close to the hall and offers a range of draught ales and wines and all drinks are at club prices.

Outside the community centre is the Wakeman Road public car park which is free after 7pm on Saturday and all day Sunday. Car parking charges are reasonable. Immediately outside the centre's main entrance there's plenty of space for deliveries along with a

small number of parking spaces.

If you have a special event in mind call in and talk to Sue in the centre office during working hours.

She will be happy to show you around and discuss your requirements. Alternatively email your questions or requests to office@bebca.org.uk

See the community centre by putting SL8 5SX into Streetview on Google Maps.



**NG AT THE
CALL
2604
AIL
a.org.uk**

ON

- £5
- £5
- £10
- £5
- £10
- £3
- £4
- £60
- £30

e vote. Associate and
thern Woods, Little

y Centre,

Bourne End (Bucks) Community Association

AGM ANNUAL GENERAL MEETING

**Thursday May 26th
At the Community Centre**

**Light refreshments served from 7pm
AGM starts promptly at 7.45pm**

*Why not come along and find out
how your Community Association
organises and runs its Centre.
You will be very welcome.*

**There will be a short meeting
of the Association's Council of Managing
Trustees immediately after the AGM.**

FORUM PLAYERS QUIZ SUPPER

**SATURDAY MAY 21st
AT BOURNE END COMMUNITY CENTRE**

**STARTS PROMPTLY AT 7.45 PM
Please be seated by 7.30 PM (Doors open 7pm)**

**COME ALONG AND TEST YOUR
GENERAL KNOWLEDGE
AND HAVE A FUN EVENING WITH
GOOD FOOD.**

**TWO COURSE HOT SUPPER
INCLUDED in £12 TICKET price
(purchased before 18th May, £15 onwards)**

**Vegetarian option available, please order at time of booking
TEAMS ARE BETWEEN 4 & 8 PEOPLE
SO GET A TEAM TOGETHER!**

**TICKETS FROM
WENDY KEEBLE 01628 524371 or
LEIGH ROBINSON 01628 523291**

OUR GROUP MEMBERS KEEP IN TOUCH

Bucks Family History Society

On Tuesday April 12 we welcome Mike Dewey who will talk about High Wycombe in the Great War. How did the First World War affect the town? Mike will consider typical examples of local men who made the ultimate sacrifice, those who returned and the families left at home. Much of this will be relevant to any town or village.

Then on Tuesday May 10 we consider The Future of Genealogy on the Internet with Peter Christian, author of the best selling guide *The Genealogist's Internet*. This talk will look at how things are developing to gauge what online resources and facilities we may expect to see in the future. However internet developments also raise problems for our research including barriers to access and preservation of electronic data including personal privacy.

We meet on the second Tuesday of the month at 7.30pm in the small hall at the community centre. Visitors are welcome in return for a contribution to our funds. www.bucksfhs.org.uk

Bourne End Townswomen's Guild

There will be lots of laughs on Wednesday April 13 when we welcome Pat Harman with Odd Odes. We're sure Pat will have found lots of fascinating rhymes from a variety of sources to entertain and amuse us.

Then on Wednesday May 11 Jenny Thorne will talk about The Amish who are known for simple living, plain dress and reluctance to adopt many conveniences of modern technology.

We meet on the second Wednesday in the month from 1.30pm to 4pm in the *Target* room at the community centre. Visitors are always welcome. Details from 01628 527931.

Bourne End Flower Arrangement Society

Our meeting on Tuesday April 5 welcomes national demonstrator Nick Grounds. His intriguing title is 'Palimpsest' and for non-members entry is £7. Chairman Thelma Robinson says: "He is a fabulous demonstrator and he already has us intrigued by the title."

It seems that Palimpsest is a manuscript on which two or more successive texts have been written, each one being erased to make room for the next. So how does that relate to flowers? Come along and Nick will enlighten us.

On Tuesday May 3 we welcome Sarah Motley and her demonstration title is 'Sunshine always follows rain'.

As usual lucky raffle winners get to take home the displays created during the evening.

Meetings take place on the first Tuesday in the month at 8pm in the centre theatre. Our Facebook page has 'how to' guides for

conditioning, arranging and drying flowers. Go to www.facebook.com/bourneendFAS.

Wye Valley Volunteers

Almost unbelievably our 'new' community minibus has clocked up its first MOT, giving us pause to review its use for the year and to realise how successfully it has integrated into our services. Many of these services, including coffee mornings, lunches and shopping trips, depend on transport for clients in the minibus. We do still need to build up our team of minibus drivers to cope with the increasing demand.

One continuing problem we have with the vehicle is that it has no permanent home. One of our volunteers has very generously allowed it to be parked in his drive but this is no longer possible.

We would ideally wish to find a permanent place close to Bourne End village centre. If anyone has any suggestions or offers we would be delighted to hear from them.

We are very sorry to lose our Luncheon Club co-ordinator, Helen Czasznicka, who has efficiently and sympathetically run the club for some years, as she is moving out of the area. We are delighted that Sue Tattersall is able to take over from Helen – they are in the handover period now.

If you have any ideas about parking for the minibus or if you would like to learn more about any of our volunteering activities, do please contact us on 01628 521027 or call at the Community Volunteer Office (portakabin to the right of the community centre) which is open every weekday from 10am to midday. Similarly please contact us if you need help from our services.

Marlow and District Railway Society

In January we were privileged to have a visit from our President, Sir William McAlpine, who entertained a large audience with stories of various aspects of his railway activities over many years, all totally unscripted (see page 17).

The Society's AGM took place in February but thanks to the circulation of all the relevant documents well beforehand and possibly aided by the unavoidable absence of the chairman, business was concluded in a record nine minutes.

This allowed plenty of time for an excellent presentation about the project to build a new locomotive - The LMS Patriot - from its Chief Engineer, Kevin West.

On March 17 Colin Boocock returned to give us a talk on A History of Eastleigh Works.

On April 21 we have a talk on The Work of the National Railway Museum, by Anthony Coulls, their Senior Curator of Rail Transport & Technology, an excellent and enthusiastic speaker. On May 19 we have Modern Japanese Railways, a presentation by Tom Painter and Ian Lake from Chiltern Railways on a subject little known in the UK. Ian has just spent a year in Japan.

Visitors are always welcome at any of our meetings at Bourne End Community Centre at 8pm, with a small fee of £3. Visit www.mdrs.org.uk

Marlow-Maidenhead Passengers Association

By the time this report is in print the Association will have held another Annual General Meeting, now approaching fifty!

We expect to get updates from Great Western Railway, the new branding for First Great Western, Network Rail, Chiltern Railways and possibly Crossrail, now named the Elizabeth Line.

At the recent committee meeting a number of points were noted which are worth repeating here. The 08.46 service from Bourne End to Paddington is now classified as 'off-peak'.

The customer information display at Furze Platt is still showing erratic messages while the PA system at Bourne End is still not functional and the defibrillator is still awaited, all of which we continue to remind GWR.

A team from MMPA carried out leaflet distribution at Cookham Station recently to encourage passengers to join MMPA.

Work is being carried out on signalling modifications at Maidenhead and reinforcement of the embankment at the east of the station. Part of the car park at Twyford Station has been closed off for the installation of an electrical sub-station.

The new footbridge at High Wycombe has been craned into position.

Bakerloo line access at Paddington station will be closed from April 2 until mid August for escalator replacement.

If you travel on the branch and are unable to purchase a ticket or tickets are not checked, please let MMPA know with details of your journey. This is important because if tickets are not sold, GWR will believe there are fewer travellers which puts pressure on the future of the line. This is more relevant now that electrification of the branch has been postponed. Contact info@mmpa.org.uk.

Bourne End Horticultural Society

On April 21 Colin Evans from Radio Berkshire will be talking about My Life in Horticulture.

On May 19 Gwendoline Barton will be sharing her travels in Sierra Leone with emphasis on the amazing flowers.

On May 21 we will be holding a plant sale outside the library from 10am to midday. Come and buy some flowers and vegetables for your summer garden at bargain prices. Members of our friendly society will be available to give you details of our meetings and trips, or phone 01628 521482.

We are organising a visit to Capel Manor and Myddelton House on April 16 for both members and non-members. An outing to the Blenheim Palace Flower Show is on June 17. For further details about trips ring 01628 523987.

Twinning Association

The first Saturday in March dawned cold and

snowy but the day soon cheered up when a minibus rolled into the car park containing five members of our twin village in Octeville sur mer.

They dispersed to stay with various members of the committee before all meeting up again that evening for our AGM.

More than 60 members attended the event during which we enjoyed supper, accompanied of course by plenty of wine, and then were entertained by Cherith Simmons who told us all about the history of Morris Dancing.

Our Facebook page is now live and linked to our website, where details of events will be regularly available. We are looking forward to our Barn Dance on April 9 (tickets 01628 520065) and also the official visit of about 40 people from Octeville sur mer in May, for which we are planning an interesting weekend including a day trip to Blenheim Palace.

Plans are in hand for a competition in which children from the local schools are invited to submit a picture of Bourne End which will be used to decorate mugs which, in turn, will become gifts for our guests in May (see page 12).

Families with children who are learning French at school may be interested in joining our association in order to facilitate the opportunity to visit French families and experience life over there first hand. Visit www.bebta.ukgo.com or phone 01628 521748 for more information.

RNLI Bourne End, Beaconsfield & District

We will be out and about collecting in April and May at various locations in the village of Bourne End and at Beaconsfield train station. Look out for us, we need your support.

Supporters are welcome at the AGM on April 7 at 7pm at Bourne End Community Centre.

In the light of recent poor practice by a few charities, we at the RNLI are keen to continue our fundraising activities including the house-to-house collections that we schedule once a year.

While Bourne End & Beaconsfield are long-standing supporters of the RNLI and the public have been very generous, we would like to conduct a survey in these areas to understand the wishes of the community regarding fundraising.

To this end we would be grateful if you could answer these two questions:

1. Do you have a 'no cold callers' sticker in your window or door?
YES/ NO

2. Are you happy for the RNLI to continue its once-a-year house-to-house collection?
YES/ NO

The survey is set up on Survey Monkey so all you need do is go to this website and answer the two questions:

<https://www.surveymonkey.com/r/9YX5D3N>

The results will be announced on April 7 at our AGM.

CALENDAR OF VILLAGE EVENTS

APRIL

- 1 Fri Bingo in the community centre. The fun starts at 2pm
- 5 Tues CentreJazz: live music from 8pm in the Community Centre bar. Admission £5 includes raffle.
- 7 Thur Street Party with Bourne End & Cookham Rotary Club at the community centre. Tea and goodies for the elderly and old songs to celebrate the Queen's birthday
- 7 Thur Community Centre Bar Quiz starts at 8.30 pm. It's a £1 per person and the winning team gets the quiz takings from the night
- 8 Fri Bingo in the community centre. The fun starts at 2pm
- 9 Sat Bourne End Community Market 10am – 1pm in the library
- 13 Wed '350 years of History' A talk on Cliveden by Maggie Blakeslee at St Mark's Church, Station Road. Tickets £10 to include a glass of wine. Call 01628 810590 or email cottrelljane@hotmail.com
- 14 Thur centreTalks features Ken Townsend on the topic Bourne End History fromn Spade Oak to Cookham Bridge. See posters page 26 for more information.
- 15 Fri Bingo in the community centre. The fun starts at 2pm
- 15 Fri Social dance with Barbara and David at 8pm. Good dancing in friendly company.
- 22 Fri Bingo in the community centre. The fun starts at 2pm
- 24 Sun Table top sale at the centre 9.30am to 11.30am. Call Caroline on 01628 485642 to take part.
- 29 Fri Bingo in the community centre. The fun starts at 2pm

MAY

- 3 Tues CentreJazz: live music from 8pm in the Community Centre bar. Admission £5 includes raffle
- 5 Thur Community Centre Bar Quiz starts at 8.30pm. It's a £1 per person, and the winning team gets the quiz takings from the night
- 6 Fri Bingo in the community centre. The fun starts at 2pm
- 9 Mon Wooburn Residents' Association Bi-monthly meeting and AGM, at 8pm, in the parish council offices, Town Lane. All welcome.
- 10 Tue Public Inquiry into bridleway from Cores End Road to Wooburn Green reconvenes on at 10am in the library.
- 13 Fri Diabetes Day of fundraising at 227 Blind Lane, Flackwell Heath. Starts at 9am with tea and coffee until 6pm when it turns into a cheese and wine party. There will be a 'Grand Draw', tombo-la, Phoenix Cards, table top sale and lots more all in aid of Diabetes UK. Drop in or call organiser Carol Bailey on 01628 526777 for more info
- 13 Fri Bingo in the community centre. The fun starts at 2pm
- 13 Fri Social dance with Barbara and David at 8pm. Good dancing in friendly company
- 14 Sat Bourne End Community Market 10am – 1pm in the library
- 20 Fri Bingo in the community centre. The fun starts at 2pm
- 21 Sat Forum Players Quiz Supper at the community centre. Starts promptly at 7.45pm. See information in their poster on page 38
- 26 Thur Bourne End Community Association AGM. See poster page 38
- 27 Fri Bingo in the community centre. The fun starts at 2pm
- 29 Sun Hedsor Open Gardens between 1pm and 5pm. For the first time seven gardens will be open to view along Harvest Hill and Widmoor including Hedsor Priory garden. There will be teas and plant sales as well as an opportunity to view the St Nicholas' Church Flower Festival. Entry £5 per person (under 14s free) to include a Flowerland voucher, with all proceeds going to the funds of St Nicholas' Hedsor.

The next issue of Target will cover June and July. Email editor@targetmagazine.org.uk by Monday May 2 to get your event included in the calendar. The magazine will be published on Friday May 27.



There may be other parties and events (some possibly impromptu) in April and May to mark Her Majesty the Queen's 90th birthday on April 21. We'd love you to send us your photos for the next issue!

In the meantime, here is a picture of a street party held in Isis Way on June 2, 1953 to celebrate Queen Elizabeth's coronation. I hope there was lashings of Ginger Beer for the children!

Please call into the centre and pay for your copy of Target

Target Quiz

Sponsored by The Falcon Pub, Wooburn Moor

Number 91

Penny Walsh challenges you to name the authors of these classic tales. Well known titles but who wrote them? Write your answers on an envelope, add your name and address, include £1 entry fee then take it into the community centre for a chance to win Penny's mystery prize. All money raised goes to the community centre.

- | | |
|--------------------------------|------------------------------|
| 1 Swallows and Amazons | 11 Diamonds are Forever |
| 2 Lorna Doone | 12 Hound of the Baskervilles |
| 3 The Scarlet Pimpernel | 13 Treasure Island |
| 4 Murder on the Orient Express | 14 Mr Midshipman Easy |
| 5 Little Women | 15 Jane Eyre |
| 6 Dr Zhivago | 16 1984 |
| 7 Moby Dick | 17 Robinson Crusoe |
| 8 Tess of the Durbervilles | 18 The Three Musketeers |
| 9 The Water Babies | 19 Cat on a Hot Tin Roof |
| 10 Little Dorritt | 20 Of Mice and Men |

The closing date is Friday May 6

ANSWERS TO QUIZ 90

1 Hen 2 Pig 3 Cow 4 Sheep 5 Horse 6 Pig 7 Sheep 8 Horse 9 Sheep 10 Hen 11 Pig 12 Hen 13 Horse 14 Cow 15 Pig 16 Horse 17 Cow 18 Sheep 19 Hen 20 Cow

The winner is: Pauline Bourne, Elms Drive, Well End



The Falcon Pub

Watery Lane,
Wooburn Moor, HP10 0NE

Tel: 01628 522752



St Georges' Day

Saturday 23rd April

Celebrating everything English!

Serving traditional grub from pie, mash

and liquor to fish and chips...

With **Harmonica Lewinsky** a proper cockney geezer aiming to get yer kneezz up.

Saturday 7th May

Bublé is Back!

By popular demand

performing

"The Best of Bublé"



FULL STEAM AHEAD LAUNDRY SERVICES



FREE
COLLECTION & DELIVERY

Washing & Ironing of all household and commercial items undertaken.

We wash football kits too!

All laundry is treated to suit personal requirements with excellent standards of hand ironing in a guaranteed non-smoking environment. With same day, 24-hour and 48-hour quality services to choose from. *See website for more details!*



CALL NOW ON 01494 482474
OR EMAIL FULLSTEAMAHEADLAUNDRY@GMAIL.COM

📍 fsalaundry 📱 FullSteamAheadLaundry

20% OFF

Please quote code FSA347654 or hand in this coupon upon collection of laundry to qualify. (ONE DISCOUNT PER HOUSEHOLD ALLOWED)

WWW.FULLSTEAMAHEADIRONING.CO.UK

WE NOW UNDERTAKE DRY CLEANING AND LAUNDRING OF KING-SIZE DUVETS!