

target



VOL.51 No4
AUG/SEPT 2015 £1 *Suggested price*

The Journal of Bourne End (Bucks) Community Association

Penny's Corner sign says it all...

A sign on Penny's Corner in Bourne End was officially unveiled on Saturday June 27. Guest of honour was Penny Walsh whose name was given to this attractive area when it was purchased by Wooburn and Bourne End Parish Council. Penny, along with parish council chairman Sue Wagner, drew back the velvet curtains on the official sign detailing the history of this corner of the village and how it became Bourne End's central open space.

Local people gathered to applaud as Jim Penfold, chairman of Bourne End Residents Association, told them that the efforts of Penny and her husband Brian were instrumental in seeing this area protected from development. Calling it 'Penny's Corner' was an acknowledgement of what they had done.

The sign details the history of the site over many decades; how the Nag's Head pub was demolished for road widening and the remaining land became a dump before Penny and Brian set about creating an attractive area for the village.. "We had to get five old cars removed before we could start" was Penny's recollection of those early days.

Today it is maintained by the parish council and the flower beds are planted seasonally by Bourne End Garden Centre. The parish council's centenary clock, some seats and now the information sign combine to confirm Penny's Corner as a permanent asset for Bourne End.



Hawkinsport promoted into the big league...

Hawkinsport is bucking the trend of independent shops and businesses closing down in villages and towns across the UK.

The family business, established 50 years ago, has moved to bigger premises in Bourne End to cope with the growing online and team equipment side of their business.

The move, to Wessex Road, means that as well as a large storage area, Hawkinsport can now display a wider range of sporting goods and school uniforms. They even have room for a hitting area where shoppers can try out hockey sticks, cricket bats and even tennis racquets.

Target went to try it out!

See the full story and our review on page 10.



CONGRATULATIONS to The Fruit Market in Bourne End who have been named 2015 FreshAwards Independent Retailer of the Year.

The prestigious award, from the Fresh Produce Consortium, was presented to owner David Bryant, who opened the shop more than 20 years ago, by FPC chief executive Nigel Jenney (right). The full story will appear in the next issue of *Target*

PLUS: More special wedding celebrations... pictures from local summer fêtes... and a complete round-up of Wooburn Festival events



Target magazine is published by Bourne End (Bucks) Community Association and distributed free to over 5,000 homes in the local area. The distribution network includes Bourne End and Wooburn Green as well as the outlying hamlets of Hedsor, Well End, Little Marlow, Cores End, Upper Bourne End, Wooburn Common and Wooburn Moor.

Bourne End (Bucks) Community Association

The Centre, Wakeman Road, Bourne End, Bucks SL8 5SX
Telephone: 01628 522604
Office Hours: Mon - Fri 9am to 4pm
Senior Administrator: Sue Ambrose

Visit: www.bourneendbucks.com for current information or email office@bebca.org.uk

Editor

Debra Aspinall
Tel: 07881 558027
editor@targetmagazine.org.uk

Managing Editor & Distribution

Barrie Penfold
Tel: 01628 525415
email: managingeditor@targetmagazine.org.uk

Advertising & Production

Barrie Penfold
Tel: 01628 525415
advertising@targetmagazine.org.uk
Our advertising rate card is on www.bourneendbucks.com. Click on Community Association, then *Target*.

Proofreading Christina Martell and Meriel Riseley

Printers

Gpex, Pinstone Way,
Gerrards Cross SL9 7BJ
Telephone: 01753 887450



All material appearing in *Target* is the copyright of Bourne End (Bucks) Community Association. The Editor reserves the right to select letters and reports for publication and to edit for grammar, style and length.

BULL'S EYE

There seems to be more and more I have to cram into *Target* each issue. I could happily fill a magazine twice the size. Bourne End and Wooburn really are very busy places, packed with interesting people, doing interesting things.

Each issue of *Target* starts with me and the managing editor, Barrie Penfold, sitting down (usually at my house over a cup of hot lemon) to see what stories we have lined up. Invariably by the end of that first session we have earmarked something for every page. So over the next month of editing I have to squeeze items, sometimes hold them over and, occasionally drop them all together as other news stories pop up.

Page one of this issue is a fine example. Penny's Corner deserved the cover story, but then Hawkinsport, moving to bigger, brighter premises in the village, was a good news story too. The solution? To share the cover. Then we heard that The Fruit Market in Bourne End had won a prestigious award (no surprise there for anyone who buys their fruit and veg)... The award was being presented on July 24 after the magazine had been edited and proofed, but not before it had gone to press. Which is why we have a photo and a teaser about the story running in the next issue. Also lined up for that issue is a report from Bourne End schoolgirl Abbie Armstrong who did some work experience on *Target* in July. She is off touring Australia with her netball team and has promised a report on her adventures down under. Not bad eh? The furthest my netball team went was a 10mile round trip to the next town. We won. End of story.

Debra Aspinall, Editor



Buses causing congestion

I write in regards to the buses parking at Bourne End Station. I recently wrote to Transport for Buckinghamshire to raise my concern at the congestion at Bourne End Railway Station at peak times caused by the No36 bus which terminates its journey there, and the implications for safety.

The termination consists of a bus (usually a double decker) parking for 15 minutes or thereabouts on the main road which is double yellow lined.

Other routes use the same bus stop to allow passengers to board and alight, but have to pull up behind the offending No36.

It has been my understanding that double yellow lines are put down for the express purpose of safety and to prevent parking which would impact on traffic flow. Both of these ideas are being seriously jeopardised.

In my letter to Transport for Buckinghamshire I suggested a layby be constructed across the front of the old Firefly, thereby removing the hazard and complying with the law. The suggestion was rejected, but bus companies are being asked to review their schedules to reduce the time spent at our station. To date there has been no visible sign of change. What price health and safety?

John Harris
Camden Place, Bourne End

Target received the following letter from Chalklands resident David Lane, a member of the Marlow Maidenhead Passengers' Association and a self-confessed train addict since an early age when he was lifted onto the footplate of a recently arrived steam locomotive at Paddington by his great uncle, the station's chief station inspector. His Uncle Dick has started as a lad porter at Cookham station in the 1800s and had worked his way up through the company. David remembers his impressive uniform and says he has been "addicted to the smell of hot oil, coal smoke and steam ever since that day".

More to it than meets the eye

With the electrification of the Great Western main line, it was announced by the Government earlier in the year that the Thames Valley branches would be included in this scheme.

However rumours started circulating some time ago that the Marlow-Bourne End branch would not be electrified and in order to clarify the situation, I emailed the MD of First Great Western, Mark Hopwood, asking him to clarify the situation.

Those members of the Marlow Maidenhead Passengers' Association (MMPA) will have learnt by now of the facts, but I thought it advisable to spread the word to a wider audience.

The facts are that the branch will not be electrified. The reason for this decision is that the new electric trains which will be entering service in the next few years are four-car units and the space available in the station at Bourne End will not allow the use of these without fouling the points on the turn-out for the Marlow line at the end of the platform. So, we have to make do with the existing two-car diesel units for the foreseeable future.

There is one bit of good news regarding the branch however. It is hoped that the hourly service can be increased to half hourly.

This will be possible due to numerous grants from various bodies including the Thames Valley Local Enterprise partnership (LEP), National Station Improvement Fund and other grant funds. First Great Western are currently working with Network Rail on this scheme and, providing funds are forthcoming, track alterations and improvements to the station can go ahead giving us a 30 minute interval service to both Marlow and Maidenhead. We await developments.

David Lane, Chalklands, Bourne End

ABOUT TARGET

Target magazine was launched in 1964 to provide information about the new Bourne End Community Association, with the name referring to the money required to build a new community centre. Over the years the magazine has grown, and its distribution area has been extended as the population has expanded through Bourne End, Wooburn Green and the surrounding villages.

Bourne End Community Association was formed in 1962 by local people who wanted a social centre to meet the needs of a growing community. Fund raising and determination saw the community centre open in Wakeman Road on 28th October 1967. Another hall was added a few years later and constant improvements have been made over the years.

See pages 36-39 for more information on the facilities and activities available at the community centre.



During the 36 years that our association has been in existence we have only had four chairmen. David Bolton was quickly followed by Brian Wheals who took the association forward in many inspirational ways. When Brian decided to retire from the chairmanship Tony Beseke took over. His quiet, efficient, calm but humorous approach was appreciated by all the members and certainly those on the committee.

Sadly Tony died on June 13 after an illness which he had fought with courage, came back to claim his life. Our condolences go out to his wife, Mary, and to all his family.

Following on from this sad news is news, which for now, must be regarded as good news. In the last issue of Target I mentioned the application for 22 houses on the old railway line off Cores End Road, adjacent to Blackbird Cottage and Trees Road. The public inquiry was due to start on October 13 at the council chambers in High Wycombe. I had asked that as many people as possible attend to demonstrate that it is local residents, as well as the WDC council and officers, who opposed this application. Happily Charles Pitcher, the landowner, has decided to withdraw his appeal against refusal of this application. Even though I have read the reasons for withdrawal it is probably better not to comment or speculate. However on the WDC planning website for application 14/06823/OUT right at the end of comments and statements is the full text of the agent's withdrawal letter which makes interesting reading.

For now this does not affect the joint Bucks County

County/WDC/Sustrans plans for a bridleway along the old railway track from Blackbird Cottage, Cores End Road, to Manor Farm entrance lane in Wooburn Green. The Order is still opposed by Charles Pitcher. That public inquiry is set to take place at the end of this year.

As a residents association we continue to be concerned about the proposed redevelopment of the Firefly public house site. Over-development and parking issues are at the top of the issues, but in my mind the proposal is just not very attractive.

The McCarthy & Stone development continues at a pace. Soon this more traditional look will be apparent, which most people preferred to the contemporary design eventually turned down by WDC's planning committee.

We are also delighted to see that Penny Walsh, and indeed her husband Brian's past efforts, have been recognised by the parish council with the new signboard on Penny's Corner. It must always be remembered that Penny and Brian's efforts to make this an attractive garden and lawn thwarted Bucks County Council's plan to develop this area with shops and flats back in the 1970s. How much more attractive is this open space with the clock, flower beds, grass and seats to stop and watch the world go by?

Thank you for taking the time to read this article. We try to keep everyone up-to-date on local issues but if you have any thoughts, ideas or questions please call me.

Jim Penfold, Chairman 01628 525415

Jean Peasley BEM

"I was very honoured when I got the news," Jean says "but then it's a lonely six weeks when you cannot say anything to anyone." Jean was responding to the question about how she felt at the news that she had been awarded the British Empire Medal in the Queen's birthday honours list. "It came in a letter from the Prime Minister" she explains "and I felt very humbled by it."

As the news sunk in Jean's constant thought was that 40 years next May marks the start of the Good Neighbours Scheme. "That's where it all began" she remembers, "and it has snowballed – thanks to wonderful people – to our Wye Valley Volunteers that we all support today."

Jean recalls names of so many who were involved over those decades and with each one there's a typical Jean smile of affection.

"There are not too many founder members left," is her sad thought on that subject. "But what a great organisation it has become," she says with pride. And for Jean the real satisfaction has seen the volunteer organisation keeping pace with current needs and being prepared to change and adapt. *Congratulations came from MP Dominic Grieve when he met Jean at the Bourne End Village Fete (pictured here).*



MARTIN VEHICLE SERVICING ADAMS

YOUR LOCAL MOT SPECIALIST

A friendly family run business with
30 years experience
Servicing all cars, new and old also light
commercial vehicles.

- General car repairs and maintenance
- Free courtesy car available
- Tyres, exhausts and batteries supplied and fitted
- Latest diagnostic equipment for all makes of vehicle
- Air conditioning service available
- 30 Years Experience

01628 850000

email: info@mavs.co.uk

Alexander House, Wessex Industrial Estate, Bourne End



WOOBURN RESIDENTS ASSOCIATION

By Margaret Amos Secretary to the Association

New Chairman

We are delighted to announce that Bruce Gallup was unanimously voted in as WRA's new chairman at our AGM in May. Bruce says "I have been attending Wooburn Residents' meetings for some years now. I live 'on The Green' so have a particular interest in things that happen in and around The Wooburns. I look forward to my new challenge and working with the enthusiastic people of the association."

Wooburn Fête 2015

See more photos on page 13

A great day and a party atmosphere on Wooburn Green was enjoyed by friends and neighbours from The Wooburns and surrounding areas on June 20.

The fête was held as a result of the people of The Wooburns requesting more community events to encourage community spirit.

The Meadows School Choir sang superbly and St



Paul's Country Dance Club was accompanied by clapping from the enthusiastic audience.

Our local Takeda Voices Choir from Takeda Pharmaceuticals in Glory Park sang for us once again. Their final piece, The Rhythm of Life, included audience participation.

Despite the mixed weather being on everyone's lips in the run up to the fête, apart from a couple of warm showers making it feel British, the sun shone.

Dave the Disco, who entertained the children as the finale, then showered them with fake snow!

The main aim of the fête was not to raise money, but the total profit was over £3,500. WRA raised £2,310 from its stalls which will be spent on projects in the community such as Christmas lights.

The Scouts raised a whopping £650 from their traditional games for Scout funds. The Community Church, did a superb job with the cream teas and cakes (next to Maidenhead Band who played enjoyable toe-tapping music from the shows) raising £300 which is going to the One Can Trust, High Wycombe's food bank.

St Paul's Church, the Guides, Wooburn Women's Institute, Wooburn's Youth Club and other organisations raised money and awareness of their organisations.

We were delighted to have Wooburn Green & Bourne End Children's Centre with us who undertook crafts for the children at no charge.

As a children's centre they provide activities and support to help local families with children under five to develop and grow in a group setting at the centre or on a one-to-one basis in the home.

Our sincere thanks go to the Red Lion and The Queen & Albert pubs who supported us with the use of their facilities – and kept many refreshed with their beverages.

Our special thanks again to our sponsors without whom the fête would not happen: Citygate VW Van Centre, Peter Lole & Co Ltd, Flackwell Financial Services, SRS Joinery Ltd, Crowden Coachworks Ltd, 3663 Wholesale Foods and Tesco Express. Also to the local shops which donated raffle and tombola prizes. Another big thank you to 1st Wooburn Scout Group. Without their help in so many ways WRA could not hold a fête.

NEXT MEETING of Wooburn Residents' Association is on Monday September 14, at 8pm, in the Parish Council Offices, Town Lane. We are a friendly bunch. All welcome. Remember that you can contact us through our website www.wooburnresidents.org/contact_us and can visit us on Facebook.

Classic Beauty

for
Beauty treatment from fully qualified and caring therapists

Using top quality products from
Pridora Skin care. *Caci* non surgical facial and body treatment

Jessica manicure and pedicure
The unique and hygienic *Phi* waxing system

Open 9am until 8pm most nights

17a Soho Mill, Wooburn Green Tel: 01628 850688

ACUPUNCTURE BALANCE

Ray Siberini BSc (Hons), MBAcC, LicAc
Traditional Chinese Acupuncture
Five Element Constitutional Acupuncture

The Sport Massage Clinic, New Road,
Bourne End, Bucks, SL8 5BS

www.acupuncture-balance.co.uk
info@acupuncture-balance.co.uk
07449 688908

CHATTELWORTH LIMITED

CONSTRUCTION
All aspects of general building work:
*Extensions/Alterations *Renovations *Carpentry/Joinery
*Brickwork/Paving *Plastering *Commercial & Domestic

FULL DECORATING SERVICES
*Painting *Internal/External *Wallpapering *Commercial & Domestic

GENERAL
*Roofing/Slatting/Felting *General Maintenance

PURPOSE MADE JOINERY
*All aspects of purpose-made joinery from our own in-house workshop

MONARCH windows, doors & conservatories
also *Plastic Fascia *Barge Boards & Cladding *Guttering

A first class service at very competitive prices, call now for a no obligation quotation

*A members of the Federation of Master Builders and
FMB (Masterbuilds Warranty Scheme)*

Chattelworth Works,
95a Queens Road,
High Wycombe, Bucks HP13 6AH

Tel/Fax 01494 461544

saxons

2 Furlong Road
Bourne End
Bucks
SL8 5DG

Come and visit our London trained professional stylists working to the highest standards

Whether you require advice on cutting or colour techniques Saxons is the salon to be seen at!

Open Monday – Saturday
9am – Late (by request)
Saxons welcomes your call
01628 524255

A. Stride



**Heating & Plumbing
Roofing
General Building
Painting & Decorating
Replastering & Guttering
Service**

Estimates Given Free

Telephone: 01494 440219

Mobile 07973 439781



THE WALNUT TREE

HEDSON ROAD, BOURNE END, SL8 5DN
Tel: 01628 532417 www.walnuttree.co

OFFERING PUB FAVOURITES
TRADITIONAL SUNDAY ROASTS
& BOARD SPECIALS
ALL FRESHLY PREPARED

31ST OCTOBER 2015
SAVE THE DATE
FOR OUR 2ND ANNIVERSARY
HALLOWEEN CELEBRATION &
COMPETITIONS

DRINK & DINE ALFRESCO
IN OUR GARDEN ON SUNNY DAYS

TAPAS EVERY TUESDAY
6PM – 9PM

DOGS & MUDDY BOOTS
VERY WELCOME!

**For Hire - Two Halls
& kitchen facilities**

Ideal for children's parties; aerobics;
dancing; ballet classes; meetings, etc.

Contact Ann 01628 526865
or Muriel 01628 523622

Ample parking @ Cores End Church

**ABSOLUTE CLEAN-
ING**
Windows & Gutters
Domestic & Commercial
Ring Mark Holt

**HUGHES
BUILDERS MERCHANTS**

CALL IN FOR A FRIENDLY, PERSONAL
AND LOCAL SERVICE

BRICKS, DIY SUPPLIES, BLOCKS,
AGGREGATES, PAVING SLABS,
TIMBER, CALOR GAS, PAINT,
SALT and COAL

01628 522022

24 Whitepit Lane, Hackwell Heath, Bucks.

11 PLUS TUITION

For the New 11+ Test

Experienced primary teachers in
Bourne End

01628 528455 / 299856

www.11plusacademy.com



Another Answer

Books and Accounts

Efficient, Friendly and Local

TEL: 01628 530805

WWW: sylvia@anotheranswer.co.uk

14 The Parade, Bourne End, SL8 5SY

www.anotheranswer.co.uk



INDIVIDUALS – SOLE TRADERS – SMALL BUSINESSES

Bookkeeping + Payroll + VAT + Tax Returns + Accounts

We'll open it now!



**30 MINUTE
RESPONSE**

- UPVC
- CHUBB
- YALE
- UNION
- ERA
- LEGGE
- ASEC
- VIRO
- ABLOY
- CISA
- ASSA

UPVC LOCK SPECIALISTS
**All Domestic
& Commercial Lock Problems
Solved by your Trusted & Reliable Family Business**

• POLICE RECOMMENDED AND INSURANCE APPROVED LOCKS SUPPLIED & FITTED
• ALL TYPES OF DOOR & WINDOW LOCKS FITTED, OPENED, REPLACED & REPAIRED

01628 528433

Or if line busy: **MOBILE**

07831 487222

www.allsecurehomes.co.uk

10 Thames Close, Bourne End Bucks SL8 5QJ

FREE Advice, Surveys & Estimates



Chubb Locks Yale GE GE UNION



**We will give you
a competitive
FULL QUOTE
before we start any
locksmith work**

TALK TO A LOCAL LOCKSMITH ... not a Call Centre!

**ARNOLD
FUNERAL SERVICE**

Private family business. Private chapel of Rest.
Traditional and Alternative Funerals.
Home arrangements by appointment.
Pre-payment plans available.

891 London Road, High Wycombe
01494 472572

38 Oak End Way, Gerrards Cross
01753 891892

32 Gregories Road, Beaconsfield
01494 685000

21-23 Little Marlow Road, Marlow
01628 898866

273 Farnham Road, Slough
01753 535556

www.arnold-funerals.co.uk



24 HOUR SERVICE

Please support Target advertisers



Marina Life with Peter Osborne



The weather this summer has been strange. A hot spell, then rain and wind etc. I always mention the weather as it is important to us as it obviously affects our operations; what suntan factor we slap on? do we need sunglasses or not? jackets on/jackets off? You cannot imagine the decisions that we have to make and the stress it puts us under! If the weather was consistent it would be a lot more convenient all round.

Generally trade has been good, but it does take a dip with the inclement weather. At this time of year there are various events up at Henley such as the Regatta, the Festival and the Traditional Boat Rally. This results in boats travelling up there and we tend to see sales of fuel and the like increase.

This year we have had quite a few Little Ships, the Dunkirk Veterans, going up stream to the Traditional Boat Rally. At one time we had three of them mooring in the marina. River movements are currently looking slightly down on last year; this should pick up once the school holidays are in full swing.

In June we had the Magna Carta Pageant passing though Bourne End. This started at Hurley and took two days to get down to Runnymede where the document was signed many millions of years ago.

The Gloriana was the 'Flagship' of the fleet and was rowed downstream on this occasion by oarsmen and women from Maidenhead Rowing Club.

Unfortunately it was a damp grey day, but this was tempered by the quality beer over at the Bounty.

Many people came down to the river to watch the spectacle that was joyous to behold. On the way upstream Gloriana had called into the marina to take advantage of our services, also Rocky was employed to sniff out the boat as part of

the high security checks that she has to go through. Just for your information he found nothing more malicious than part of a biscuit, which he made this safe by eating it!

Matty and Chaos have gone 'green'. They have planted a Sun Flower by the stairs to the restaurant above and have been seen pampering it while uttering sweet nothings? Have they gone a little emotional over a plant? I think they might have, it will be interesting to see how tall it grows, if in fact it survives their mollycoddling.

We had some floats delivered to the marina to crane into the river on behalf of a company who were undertaking some river works in Marlow. These floats craned into the river then connected up to form a platform on which a digger was to be placed. Unfortunately the digger was over six tons and therefore we could not crane it on board due to it being over our weight limit. The decision was made to drive the tracked digger on to the platform. This was achieved by the contractors tug pushing the platform into the bank while a driver drove it off the bank down about a foot drop on the platform. I'm guessing that he'd had a wee dram before trying it.

As the river gets busy we have more demand for overnight moorings. This is a service that we are known to provide. The key word is 'moorings'. We often take phone enquires asking if we can provide a berth overnight, I then have to explain that we are not midwives and that we have no experience in delivering babies.

Eventually the message gets through. I must find out where it is advertised that we are midwives.

For those of you who are enquiring about the cygnets in the marina, as of today you will note that there are only two with the mother.

The other two have not been very well and are being looked after by the swan people.

As they have been away from their mother for over two days they would be rejected by mum, should they survive, so they will be released somewhere else when the time is right.

I believe that mum had five in total but one disappeared fairly early on in their life, possibly it fell victim to a fox or a pike. As in nature, there may have been too many for mum to look after and/or it may have been abandoned by her as it was weak and therefore easy prey. Nature can be very cruel.

An unfortunate aspect of a small business like ours is that staff have to take holidays. I have tried to curtail this happening, but unfortunately I stand more chance of dining on the moon. So we end up forgoing due leave and doing 12-day shifts given that during the summer months we like to work with a minimum of two staff on duty. We obviously catch up with our leave over a year, but we then end up having days off when everyone else is at work in the winter. I was explaining this to someone when he responded that we spend our holiday at the marina. I was very surprised how quickly the ambulance arrived here.

Well, another day gets underway, Chaos is sunning himself in Somerset so I'd better go and crack the whip at Matty as he has a busy day ahead of him while I enjoy a cup of coffee, feet up reading the newspapers. Until the next time...

**Peter Osborne,
Marina Manager**

HOME PC HELP

- All PC/networking problems
- No callout charge
- No fix – no fee
- 35+ yrs experience

For friendly, personal advice call

01628 630096
or 0778811 3279
(7 days inc evenings)
www.homepchehelp.org

**Colin's
Garden
Services**

Tel: 07884 262871

Garden

Grass Cutting	Hedge Cutting
Maintenance	Fencing
Patios	Turfing

Services

Grateful thanks

Grateful thanks to Sue and Tony at Cards & Gifts who volunteered to produce the artwork for the new sign on Penny's Corner (see story page 1). Working from a rough layout they created an informative map surrounded by historic old photos. Many thanks for a great job.

Rev runs so others can park

by Abbie Armstrong

Rev Janet Binns is donning her trainers again to run another marathon – this time to raise funds for a car park at St Mark's Church. Parking problems for the Station Road church and hall have been at the forefront of Rev Janet's mind because of the increasingly high number of elderly congregation members.

"Parking is a huge problem here," she told me. "At funerals the hearse has to park on the pavement which is not ideal, and also elderly people get dropped off across the very busy road."

A keen runner since her school days, Janet, or the running Rev as she is affectionately known, hopes the project will gain awareness and financial support through her competing in her ninth marathon in Dublin in October.

"People can sponsor me by my Justgiving page or through forms in the church. Additionally we hope funding will come from local businesses and organisations," she said.

This financial backing will be in addition to almost £7,000 already raised from choir concerts, Janet's London Marathon fundraising efforts in 2014 and legacies - nevertheless they are still in need of support to reach the £25,000 car park cost.

Janet is keen to stress that although this project is fundraising for the church: "it is very much a community project, due to the new range of events it will enable St Mark's to offer to Bourne End."

To this end, the church is also interested in hearing from anyone with fundraising ideas and expertise. Help from a project or fundraising manager would be most welcome.

When Janet began as Rector of St Mark's and St Nicholas churches in September 2013, the vision for a car park and new church hall had been put on hold as fundraising "was very difficult" due to the huge target of over £200,000. The separation of the plan into two phases and a renewed fundraising effort has meant the car park idea can now be actioned.

Now firmly set on her October marathon challenge, Janet is currently training hard in her gruelling regime of fortnightly 20 mile runs, in addition to her frequent seven mile routes along the river. With steely determination, she cites an enjoyment of running and competition as motivation, along with the ability to fundraise and inspire people to do something they never thought they could. After years of middle distance running she stepped out of her comfort zone and decided in 2006 that it was "now or never". She ran her first marathon and finished in just 3 hours and 18 minutes.

Her upcoming marathon will no doubt be met with similar successful sporting determination, and with such a worthwhile project as her target, we hope her fundraising will be a success too. For details on how to sponsor Reverend Janet Binns for the Dublin Marathon in aid of St Mark's car park, call her on 01628 523046 or check out the church's Facebook page.

St Mark's Church regularly hosts social events and clubs from Pilates and parties, to choir groups and coffee mornings. However it has no parking space and extra difficulties are presented by the yellow lines on the main road as well as restrictions in nearby private roads. St Mark's have opted for a car park over their current garden. It will benefit those attending church services; baptisms, weddings, funerals and other events and provide easier access for those hiring the church hall. Later on, as part of a two part plan, they also want to build a modern parish centre in place of the current church hall.



There is a wonderful selection of mouth-watering dishes on the comprehensive menu at The Last Viceroy. They include coconut lamb, apricot lamb and cashew nut chicken alongside starters, specialities, traditional Balti, Tandoori and Biryani dishes as well as delicious seafood and vegetarian choices. The friendly and attentive staff will advise you if you are unsure about any dishes on the extensive and varied menu. You can opt for the Khas-e-Viceroy at £24.95 per person where the chef will prepare a mixed starter, main dishes and side dishes with rice and bread. Or choose the chef's special dishes which are cooked with fresh ground spices and prepared by a slow cooking method to bring out the delicious flavours; six hours' notice is required for these meals. The restaurant is well-established, having opened 28 years ago. Its cuisine attracts regulars and newcomers alike and its striking interior is divided by floor-to-ceiling pillars, making The Last Viceroy an ideal venue for a cosy dinner for couples or large parties. Open for lunch, dinner and take-aways seven days a week.

74 The Parade, Bourne End SL8 5SS
01628 531383 / 530798
www.thelastviceroy.co.uk



Parish Council

Saturday June 20 saw Wooburn Residents' Association hold their village fête on the green. We were asked whether we would like to have a stall at the event and it was agreed that it would be a good way to promote the parish council.

A few of our councillors volunteered to take turns to man the stall and they were very pleased to have so many people stop and show an interest and ask questions.

Councillor packs were available to anyone who was interested in becoming a councillor and display boards were covered in photos showing improvements in the parish that the council had achieved and illustrating the different areas that we are responsible for.

A suggestion box was also there for people to pop their ideas in. Unfortunately we are still trying to work out what the Mars bar wrapper found inside was trying to tell us.

Footpaths

At the end of June our groundsmen Roland and Shane started to cut back the overgrown

footpaths that we are responsible for. Although members of the public had been reporting some of them as being overgrown, the cutting back was left until the optimum time so they weren't continually going over the same ground.

In addition to our regular parish footpaths, we have taken over responsibility (for a fee) from Bucks County Council the following footpaths: WOO/20/2 New Road (by Bourne End Academy) to the Old Railway Line, WOO/39/1 Glory Mill Lane (runs parallel to the M40 to the Parish Boundary, WOO/19/1 Spade Oak to Willows Road (by the Old Railway Line), WOO/17/1 Mayfield Road to Holtspur Lane, WOO/7/1 Wash Hill Lea to Kiln Lane (the Swilley) and WOO/4/1 Bridgestone Drive to End of Industrial Estate (Millboard Road).

New Play Equipment

Two new pieces of play equipment have been installed recently; a climbing whirl has been installed in Blind Lane Playground and also in Bourne End Recreation Ground which replaces the "boat".

The new rope climber in Wooburn Park proved so popular that it was decided to put something similar in both Bourne End play areas.

The climbing whirls differ from the rope climber in that they also rotate. This new play equipment covers all ages from young children through to young teens and is already proving very popular with the local children.

Bourne End Recreation Ground – Trampoline Update

Following the arson attack on the trampoline in Bourne End Recreation Ground earlier this year plans are on track to replace it with a new one. Our insurance company has agreed to cover the expense of providing and installing a replacement and a new trampoline is on order. In the meantime the trampoline space has been temporarily filled in for health and safety reasons.

Free Parking Dates

Wycombe District Council has once again offered us some free parking days for Wakeman Road Car Park. Councillors agreed that the following events would benefit from having free parking:

Saturday October 10 – Craft and Community Market (Bourne End Library)

Friday December 4 – Bourne End Fun Night

Short and Sweet

No full council or committee meetings take place during August except for the Planning, Highways & Lighting committee.

Meeting Dates 2015:

Full Council:

September 22

Open Spaces, Allotments & Burials:

September 1

Planning, Highways & Lighting:

August 5 & 26 August,

September 16,

F&GP: September 8

All meetings start at 7.30pm

Normal Parish Council Office opening hours are from 9am to 5pm each day.

Please call 01628 522827 if you have any queries, alternatively email the office at clerk@wooburnparish.gov.uk or visit our website for information on www.wooburnparish.gov.uk



HAND MADE FURNITURE

Architectural woodwork, furniture, antique restoration, panelling, staircases, gilding, lettering, woodcarving, churchwork, sculpture, interior design and free advice.

LILLYFEE WOODCARVING STUDIO

Lillyfee Farm Lane, Wooburn Common, Bucks HP10 0LL
Tel: 01494 671690
Studio open for visits by appointment

WOODCARVING COURSES

Take a new direction and create beauty under the guidance of experts. Call the number above for dates and details.



Bed and Breakfast

THE OLD COTTAGE
HEDSOR ROAD
BOURNE END
SL8 5EE

www.theoldcottagebourneend.co.uk
Tel: 01628 521348
Mobile: 07796 938369

stacey@theoldcottagebourneend.co.uk



Martin's Maintenance & Plumbing

Kitchens Bathrooms
Interior decorations
Carpentry & cabinetmaker

Mobile 07725059321
martinwhite26@aol.com

Do you have a Sick PC ?

or a Misbehaving Laptop ?

Visiting support for PC problems.
Small Business, Home Office.
'Silver-Surfer' & Saga generation assistance & tutorials.

Call, Jonathan - 01628 486712
www.ComputaSolv.co.uk

"Fixing your computer problems"



Amazing Dentures Eat, Talk, Smile

We can help you live life to the full again with our dentures. Some include dentures. dentures. dentures in a highly qualified Clinical Dental Technician who has been qualified for 30 years. dentures dentures since 1988.

True life teeth & latest materials
Repairs & alterations
Cosmetic denture enhancements
Denture problem solving
FREE car park

Fulltime denture repairs to both a FREE assessment

**01628
521003**



17 Douglas St, Farnborough Heath,
Bucks HP10 9LQ

www.denture-world.co.uk



*Raising the standard in
domestic cleaning*

- * Regular cleaning, weekly, bi-weekly or monthly
- * End of tenancy cleans
- * Spring cleans
- * Quality, vetted staff with smart uniforms
- * 1st class oven and carpet cleaning service

Call Jenny or Chris on
01628 521497

www.casa-fresco-cleaning.co.uk

K Rowe & Son

Roofing & Guttering
uPVC Fascias & Soffits

Mob 07949 901100 Tel 01628 851185
www.kroweandson-roofing.co.uk

ALL THE LATEST NEWS ON
www.bourneendbucks.com

LOG ON NOW!



2750405

Aztec heating and plumbing

Repairs to all Gas
Boilers & Servicing
Contracts

Also General
Plumbing Repairs

Central Heating,
Pumps, Valves, Timers
& Programmers

Tel: (01494) 440219 home

Tel: 07973 439781 mobile

Tel: 07831 563477 mobile

Samson Windows

We're Successful Because We're Different

- Top Quality Installations
- High Security
- PVCu & Aluminium
- Windows, Doors & Conservatories



FENSA
Registered Company



*The Beauty of the Past
The Efficiency of the Present
PVC Sliding Sash Windows
Virtually Indistinguishable
from Traditional Timber*

NO Pressure Selling

NO Discounts for Quick Decisions

- we want you to be sure

NO Show House Special Offers

- we'll do a superb job anyway



NO '6 windows for £1500' - plus another 50% for essential extras - in fact -

NO nonsense at all - just excellent quality, workmanship & value guaranteed to secure your recommendation

NOTHING free - except information & advice

FREEPHONE 0800 146165 or 01628 524469

AS GOOD AS NEW



Mobile Bodywork Repairs

DAMAGED YOUR CAR?

Scuffs, Scratches & Dents

Call Malcolm now for a free quotation!

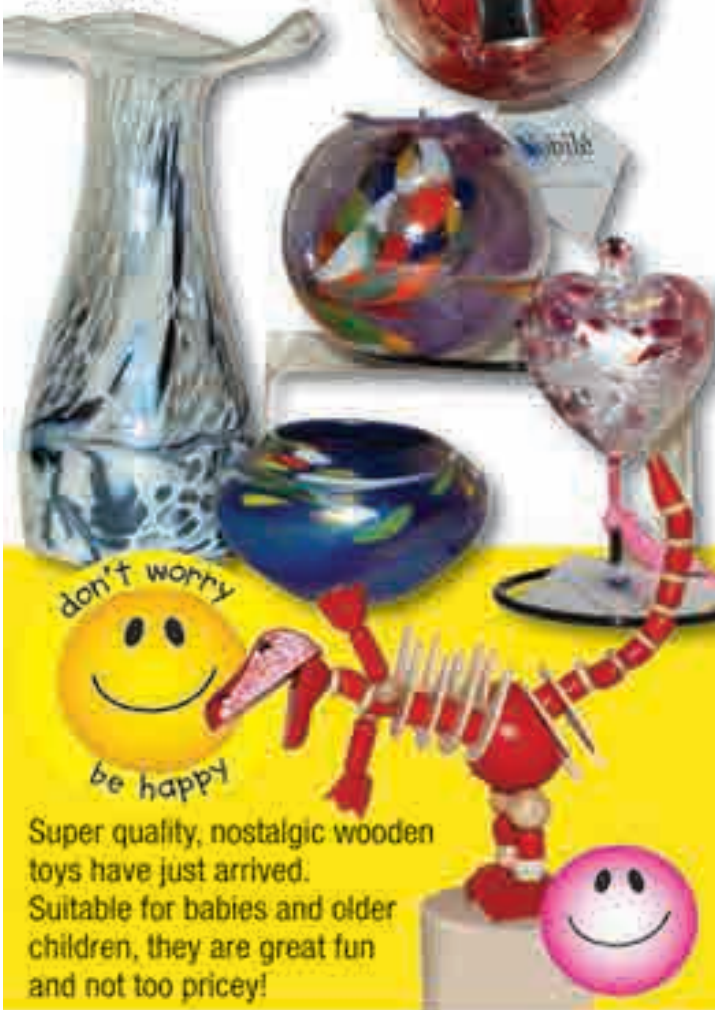
Office: **01628 532586** Mobile: **07786 482262**

Summer smiles from

BOURNE END
Cards & Gifts



Now in store, an extended range of vases, hearts and t-lights. We have had excellent feedback on these gifts which are perfect for many occasions.



19 The Parade, Bourne End, Bucks SL8 5SB
Telephone: 01628 521509
Email: tony@bowlerwright.co.uk

HAWKINSPORT

Open their new
7,500sq ft concept
sports store

Local family business Hawkinsport has opened a new state-of-the-art sports store at Unit 10A Wessex Industrial Estate.

Hawkinsport has been established for almost 50 years and for the last 29 years the shop has been a familiar landmark on The Parade in Bourne End.

The move followed a lengthy search for suitable premises to accommodate their expanding business. They always wanted to stay in Bourne End for their larger concept sports store, warehouse and production facility.

The new premises enable Hawkinsport to stock and display a wider range of sportswear and equipment plus club kit and school wear. The new store is now the largest sports specialist store in the area and features a hockey hitting area and cricket practice net. In addition, the premises bring under one roof the printing and embroidery facility providing bespoke sports apparel to clubs, schools and businesses both locally and further afield. The increased warehouse space facilitates greater stock holding and more efficient stock management of a wide range of goods. It also has the benefit of ample customer parking.

The sports trade has evolved over the last two decades with the influence of the internet driving range availability and competition.

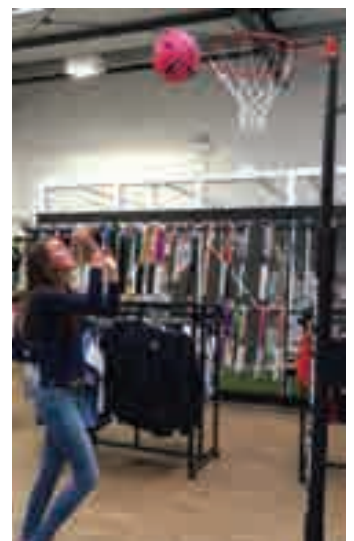
There is however a growing demand for specialist added-value services: product expertise, on-line shopping, bespoke made-to-order sports kit, school uniforms and corporate clothing. Hawkinsport has developed its business in all these areas allowing them to expand and flourish while maintaining the Hawkinsport heritage and love of all things sport.

Over the years Hawkinsport has built

up valuable contacts with local schools and businesses and the trade supply of sports goods and clothing has become an important part of the business alongside retail sales in store. On-line shopping via the Hawkinsport website has become increasingly popular allowing the sale of goods to a wider customer base.

Hawkinsport is a true family business owned by Lois and Freddie Hawkins but now run by three directors: their son Rob, a former County rugby player and coach and an ex-County junior cricketer, daughter-in-law Liz, who has a project management IT background and has made an enormous contribution to the growth of the business, and long standing employee, former Saturday boy, Martin Sell, a County badminton player and an expert on hockey, racket and bat repairs who also plays off single figures at golf. Local man Jason Maisey is the head of the thriving embroidery and printing operation and has overseen the growth of personalisation of sports and school kit which is now a vital aspect of the business.

Susie Roddick with a strong marketing background, has joined the company to maximise teamwear business and contract sales. Simon Pitney-Baxter is the manager of the new store and he will be responsible for ensuring all customers receive the Hawkinsport service they have come to expect.



Abbie Armstrong, Target's work experience student (pictured) says: "The interactive area for customers to try out sports equipment is great. The netted section with a foam goal, allows you to try out hockey sticks as well as cricket bats and even tennis racquets and footballs. Netballers can also try out balls in the post at the centre of the shop. It makes for a unique shopping experience. There's a huge range of sports equipment and clothing to choose from in the new store."

Scrumptious tea with flowers

A Mad Hatters Tea Party was the theme for a fundraising event organised by Bourne End Flower Club. Straw boaters priced at 10/6d were the preferred headgear along with flowery dresses to suit the weather.

Then they watched as flower arrangements were created by some of the club's skilled members. Summer flowers in all their glory, and randomly picked blossom and greenery from the fields, provided the perfect mix. Especially exciting was the huge display, easily split to make four raffle prizes, based on a Battenberg cake.

Afternoon tea was served with cakes galore and time for chat. Then it was time for the traditional flower club raffle to see who would take home the arrangements along with the lovely table decorations.

"It's been a fabulous occasion" chairman Thelma Robinson said with great delight, "and we raised £175 for Bourne End Day Care Centre".

Looking ahead the club will be staging another of their popular workshop days in November with a Christmas theme and, after the success of the Mad Hatter's Tea Party, another is a distinct possibility. For more information ring Thelma on 01628 524689 or Liz on 01628 476641.



BUCKS
therapy

DO YOU WANT TO

- * Lose weight?
 - * Deal with stress/anxiety?
 - * Stop smoking?
 - * Overcome a phobia?
 - * Improve at sports?
 - * Ease your IBS symptoms?
- Hypnotherapy has great results for all of these life problems... and more*
- Call 07518 018 363**
www.buckstherapy.com

Office/Therapy room available in Loudwater on flexi-time. Would suit most therapies/beauty treatments or sole-trader businesses. Very reasonable. Call 07881 558027 to discuss

TARGET

Has a collection of mix-and-match vintage cups, saucers and tea plates, tea pots, sugar bowls and milk jugs available for a nominal rent.



Perfect for a wedding or tea party.

We also have several metres of gold bunting for sale or hire.

Call Barrie on 01628 525415



CROWDEN
• COACHWORKS LTD •



- Car Body Repairs •
- Garage Services •
- Accident Repair Services •
- Insurance Repairs •
- Paint Spraying & Much More •

We repair all makes and models and also deal with all insurance companies

5A The Green, Wooburn Green, High Wycombe, Bucks HP10 0EE

Tel 01628 526463

www.crowdencoachworks.co.uk

Support your local craftsmen and traders

A selection of pictures taken at Bourne End Fête at the community centre, Wooburn Fête on the village green



BOURNE END MOTOR COMPANY

Bourne End Motor Company was established in 1994 and in that time we have built a reputation for offering the personal and professional approach normally only found in the more prestigious main town dealerships.

We have become recognised as one of the leading specialists in low mileage, privately owned cars with full service history. Most of these cars are between six months and four years old. As well as your regular family cars ie. Ford, Vauxhall, Fiat, Mini etc. we also sell luxury brands such as BMW, Mercedes.

Over the years we have built up a wide range of suppliers and through these we can source almost any make and model of car, all of which offer a significant saving than those offered by the large franchise main Dealers while still matching their standards.

WAKEMAN ROAD • BOURNE END • BUCKINGHAMSHIRE • SLR 5SX • TEL: 01628 533 222 • FAX: 01628 338 204



- Local Family Business
- All Cars HPI Checked with Service History
- Computerised Stock Locator System
- Most Makes/Models available
- At least six months Warranty on all vehicles

TEL: 01628 533 222
WWW.BEMC.CO.UK

n, Wooburn, and St Nicholas' Riverside Fête at Orchard Dene, Riversdale. A huge 'thank you' to all involved!



Solicitors **Buchanans**

**Divorce | Conveyancing | Commercial | Employment |
Wills | Probate | Litigation | Elderly Client**

Buchanans Solicitors can assist with all the above and more.

Buchanans Solicitors is a friendly, modern law firm which offers a broad range of services and aims to deliver clear advice promptly and cost effectively.

Call us for a free, no obligations chat on 01628 810 707

Swains House, Swains Lane, Flockwell Heath, Buckinghamshire HP10 8BN
office@buchanansonline.com
www.buchanansonline.com

Now providing
specialist Family and
Divorce legal advice -
please contact
our Nick Rees in
confidence



Little Marlow Parish Council

By Emma Marsden, parish clerk

Parish Council Elections

Little Marlow Parish Council had an uncontested election for the parish. Sadly we saw the retirement of councillors Dallas Banfield (23 years), Barbara Wallis (28 years) and Ruby Taylor (8 years). These councillors will be sadly missed as they had represented their parishioners for a considerable time and their knowledge about the local area was invaluable.

The council resolved that their service to the local community should be recognised and each councillor will have a tree dedicated to them at Little Marlow Recreation Ground. It was also agreed to dedicate a tree to Gloria Barclay who was the clerk to the council for 17 years and to Clive Innocent who was a long-standing parish councillor who, sadly, died recently.

Introducing our new Parish Councillors

After the election Little Marlow was pleased to welcome Anthea Falk as a new councillor. This led Little Marlow to initially have two vacancies. However we are pleased to have co-opted two new parish councillors, Vivien Morton and Roger Randall and we are now up to our full complement again.

New chairman and APM

At our annual meeting it was unanimously resolved that Valerie Brownridge be elected as our new chairman for 2015/16. Councillor Geoff Fitchew was re-elected as vice-chairman.

We held our Annual Parish Meeting (APM) in May and had a very informative presentation by Sgt Robin Hughes of Thames Valley Police. The issue of speeding is always a problem and a Speed Indicator Device (SID) was put up near Abbotsbrook Hall on the way to Bourne End. Initial feedback showed that the speeding peaked between 6pm and 8pm and this will be time targeted by a Speed Watch Programme. The council is still putting pressure on Transport for Bucks regarding the new Zeebrite Beacons for

the pedestrian crossing at Well End. Funding was granted in October 2014 and we are as frustrated as residents on why it is taking so long to install. Be assured we are chasing this up constantly. On the positive side the lines have been re-painted which makes it clearer to see.

The council is working hard to try and get a Vehicle Activated Sign put in at Sheepridge Lane. We are willing to provide some funding and we also have financial support from our county councillor David Watson and the Local Area Forum. We are hoping that we can get Bucks County Council Highways to support this project and that there will be good news in later issues.

At the APM we awarded the Geoffrey Moss Memorial Rose Bowl to a parishioner who had demonstrated outstanding service to the community over the previous year. It was a hugely popular choice that this year's recipient was Barbara Wallis who has given much to the parish particularly in the fields of planning and conservation benefitting the community. She volunteers several afternoons a week at the Oxfam shop in Marlow and organises the Christian Aid collection in Little Marlow.

Little Marlow Fern Lane Cemetery

The tree work to the entrance limes will be completed in the autumn. Following a recent risk assessment in the summer, a number of memorial stones within the cemetery were found to be unsafe. It is always difficult as we have a duty of care to make sure the cemetery is a safe place to visit, while respecting the beautiful memorial stones. At all times we will try and contact the relatives, but this is not always possible, especially in the older section of the cemetery - as there may be no relatives remaining. Please, if families see that some stones have been laid down, get in touch with the council as soon as possible. All movement of the stones will be undertaken in a respectful and sensitive manner.

The improvements to the cemetery entrance at

Sheepridge Lane will be moved forward. Following a meeting with Bucks County Council highways we need to remove around 70 metres of hedgerow to make sure the visual splays are safe for vehicles.

Grass cutting

Due to a restriction on central government funding, Bucks County Council will only cut 'rural grass' twice a year now. This rural area covers the junctions of Fern Lane, Winchbottom Lane and Sheepridge Lane where the grass has got very high this year.

Our next meeting is September 8 at The Pavilion, Church Road, Little Marlow from 8pm.

Tel: 01628 890301

Email: clerk@littlemarlowparishcouncil.org.uk

Little Marlow Village Fête, Bank Holiday Monday, 31 August

Undeterred by the torrential rain on last year's fête day, Little Marlow Village Amenities Committee is pushing ahead with arrangements for this year's event. It will be held on Little Marlow Recreation Ground (off Church Road) from 2pm to 5pm. We cannot guarantee sunshine this year, but we can guarantee that we will do our best to ensure that you have an enjoyable afternoon.

Once again we will have stalls selling home-baking, jams, vegetables, bric-a-brac, books and local crafts. Unfortunately we had to cancel some of our activities last year because of the weather, but I am pleased to say that we are planning to have our usual wide range of activities this year including children's races, children's rides, a bouncy castle, a dog show, plate smashing, fastest shot, coconut shy and face painting. We are also hoping to organise a tug of war.

We will have some great prizes on the tombola and also in the prize draw. There will be plenty of refreshments available, including afternoon tea/coffee with some delicious home-baking, soft drinks, hamburgers and ice cream.

All the proceeds from the fête will go towards local good causes as well as to projects and activities which benefit the residents of Little Marlow.

Valerie Brownridge

Chairman, Little Marlow Village Amenities Committee



Bourne End Sewing Bee is buzzing already

More than 40 sewing enthusiasts had already joined Bourne End's newest community group, the Bourne End Sewing Bee, as Target went to press and the group held their inaugural meeting in July.

Founder Tracey Huxley (right) started the group as a way of giving people in the village and further afield a platform to meet together both in person and online to socialise as they sew, swap ideas and share knowledge.

She said: "I was looking for a way to meet new people with the same interests as me. I have been sewing since I was seven years old and still love it, although I don't spend as much time on it as I would like. I decided that I could kill two birds with one stone by establishing a local sewing bee in the village which would meet once a month. In that way it's both a social event and a way for members to have a dedicated time for their sewing."

Having set up a Facebook page, a Twitter account and a website, the group has now announced that it will meet at St Dunstan's Church Hall on the fourth Thursday of every month from 7.30pm to 10pm.

The meetings are open to anyone with an interest in sewing of any kind; from complete beginners to the more experienced. Attendees are welcome to bring whatever sewing projects they would like to work on and their own equipment although two sewing machines have already been donated to be used as 'floating' machines by those who do not have their own or who need to use one briefly so they can avoid bringing theirs along.

In addition to the monthly meetings group members are already interacting with each other online, sharing ideas and information and the group even has an international element with members who are former local residents now living in Hong Kong and Colorado!

For more information the website is at www.bourneendsewingbee.com on Facebook search for Bourne End Sewing Bee and on Twitter it's @BEndSewingBee. Alternatively enquiries can be directed to Tracey at admin@bourneendsewingbee.com or just come along on the evening.



Bygillian Gallery 15% Discount on Framing



Bespoke framing services, restoration, original art, unique gifts
7 Station Road Bourne End. SL8 5QA Tel 01628 527720 www.bygillian.com



For month of August
please quote code BYGAUG2408

Could you be a First Responder?

Report by Wooburn & Bourne End Parish Council

South Central Ambulance Service (SCAS) is looking for volunteers to become Community First Responders (CFRs) in Bucks.

CFRs are volunteers dispatched by the Ambulance Emergency Operations Centre to attend appropriate medical emergencies in their local area.

Volunteers undergo two days of comprehensive training at a SCAS training centre, learning how to recognise and treat many serious and life threatening medical emergencies, ranging from cardiac arrest to strokes in the elderly through to infants.

The role of a First Responder is to provide assistance in a medical emergency and most importantly to

start and maintain the chain of survival in cardiac arrest patients until an ambulance crew arrives.

CFRs are invaluable in local communities as they are able to respond to appropriate incidents and assist patients with serious or life threatening conditions before an ambulance crew arrives. They can make a real difference by saving seconds and minutes which can make the difference to the patient's outcome.

Anyone over 18 who has held a full UK driving license for a minimum of one year can become a CFR. No previous medical experience is needed and the SCAS provide continuous support.

First responders log on when they want to, for as long as they want to on the days that they want to. They work in and for their local community.

For further details please go to <http://www.southcentralambulance.nhs.uk/ourservices/communityresponders.ashx>

Residents who would be interested in getting involved with fundraising, attending events etc. are also welcomed. For more information please call 0800 587 0207 or log on to cfr@scas.nhs.uk.



PT CARPENTRY and Household Services

Design • Repair • Rebuild - just ask

Paul Thomas

Mobile : 07905 221991 E mail : ptcarpentry@live.co.uk

Carpentry - Plumbing - Plastering - Decorating - Gardening
(sub contract electrical services)

Carpentry design and repairs, bespoke furniture made to order, erecting sheds, stables, fencing, trellis, garden gates, assembling flat pack furniture, hanging doors, changing locks & door furniture, fitting security locks to doors and windows, boarding out lofts & installing loft ladders, planting in sinks, installing washing machines, kitchen and bathroom fitting, changing taps, tiling, painting, putting up shelves, pictures, mirrors & curtain poles, cleaning and repairing gutters, landscaping, general garden tidying, pressure washing patios, project management.....

the list goes on and on!.....

"To do the jobs that you don't have time to do!"

Mobile : 07905 221991 E mail : ptcarpentry@live.co.uk

You can't have everything - where would you put it?

JAMIE'S TOURS

Picking up at a location near you!

Hastings & 1066 history

Saturday 26 September

Fabulous old town packed with tales of shipwrecks and fishermen
£21 pp for a great day out

Moreton-in-the-Marsh Market

Tuesday 6 October

Largest open-air street market in the glorious Cotswolds
£19pp for a fun day out

Tinsel & Turkey in North Wales

Monday 2 to Friday 6 November

Castles, steam trains and more Festive entertainment nightly!
£289.50pp (based on 2 sharing)

Christmas markets, lights, carols and lots more - get ready for the festive season!

For details of these and other trips and holidays

www.jamiestours.com

Ring 01494 416500

Mob 07714583215

or email jamiifye2@gmail.com



Brittons Solicitors
28 The Parade
Bourne End
Bucks SL8 5SY

Friendly, helpful, professional,
efficient and cost effective legal
service.

We look after you.

Telephone: 01628 533350
Fax: 01628 533119
Email: lex@brittonsol.co.uk

V J CLEANING

**ALL HOUSES & BUSINESS
PREMISES CLEANED
TO THE HIGHEST STANDARD**

REGULAR WEEKLY CLEANS
OR ONE-OFF DEEP CLEANS.
WE CAN WORK HOURS TO SUIT YOU,
HOWEVER BIG OR SMALL.

FOR A FREE, NO OBLIGATION,
QUOTATION

**CALL US NOW ON
07869 127508 OR
01628 527891**

R.I.P.

Jean Jones was almost 101 when she died after a short illness. This amazing lady had been the guest of honour when Wye Valley Volunteers launched their new minibus and even had the first ride on the new tail lift. Following that she took part in the opening of the Lloyds Chemists refurbishment (seen right cutting the opening ribbon) and was a regular at the coffee mornings and luncheon club in the community centre. She will be sadly missed by family and friends when her smile and cheery greeting would brighten the occasion. RIP



John Kirby volunteered to deliver *Target* to his neighbours in Southbourne Drive then added a further delivery when a friend had problems reaching top flats along The Parade. That was John Kirby and his recent death is a loss both to *Target* and to the community. John was a committed man to activities in Bourne

End. With wife Marion he attended talks in the library, fairs, shows, in fact anything that needed support. And he enjoyed a cuppa and a cake among friends.

John will be sadly missed by family and friends. Bourne End will miss his smile and friendly greeting that were his trademark around the village. RIP



Free Trial available from 21 September - 31 October
Terms and conditions apply. Fees vary. Please refer to your local study centre.

**Give your child the best
start to their school year.**

Contact your local Kumon
Maths and English Study
Centre to find out more about
our two week Free Trial.

Flackwell Heath Study Centre

01628 532620

KUMON

bourne end dental



Our exceptional levels of expertise and our team approach to caring means Bourne End Dental has been at the forefront of general practice for more than 20 years.

- ❖ Considerate dentistry in a caring environment
- ❖ Superb clinicians with a family focus
- ❖ Early morning & Saturday appointments
- ❖ Specialists in gum therapy, root canal treatment & braces
- ❖ Cosmetic dentistry & whitening
- ❖ Dental implants & facial aesthetics

**Protecting, renewing and enhancing the lifelong
dental care of our patients**

01628 523 353

Station Road, Bourne End, Bucks, SL8 5QP

www.bourneendental.co.uk



Ten years of eye care celebrated



Ashton Opticians, the independent opticians in Flackwell Heath, celebrated their tenth anniversary in June.

The practice is owned and operated by husband and wife optometrist partners Mark and Ros Ashton (pictured right).

The practice offers a comprehensive eye care and optical service to people of all ages, many of whom joined Mark, Ros and their staff to celebrate the occasion at their practice open day.

The practice has many loyal customers.

"Because we're an independent opticians we can take the time to get to know our patients and customers and offer them the standard of care and attention we'd expect to receive ourselves," said Mark. "It means that we aren't tied to any one supplier or manufacturer and can focus supplying whatever best meets the needs of individual customers."

Mark and Ros were keen to express their appreciation to everyone who had supported their business. As well as coffee and cakes visitors were entered into a raffle to win some great prizes.

Also on display was Ashton Opticians latest piece of diagnostic equipment that can detect a number of key eye conditions such as glaucoma, age-related macular

degeneration and diabetic retinopathy during a routine eye test. This piece of equipment is called a 3D Optical Coherence Tomography system (3D OCT).

Similar to ultrasound, OCT uses light rather than sound waves to show in 3D the different layers that make up the back of the eye.

"The major benefit of this state-of-the-art machine is that it allows your optometrist to see not just the back of your eye, but also in a three dimensional image look beneath the surface of the retina," explains Mark.

"Never has it been easier to find out the exact state and location of a particular eye condition.

"Using this revolutionary machine we can more confidently detect, diagnose, manage and where necessary refer to a specialist for treatment".

www.ashton-opticians.co.uk
(01628) 530420.

You could tell everyone about your business yourself...

Or you could
ADVERTISE IN TARGET MAGAZINE
and get your message across in all 5,000 homes in the immediate area.

Our distribution network includes Bourne End, Wooburn Green, Hedsor, Well End, Little Marlow, Cores End, Upper Bourne End, Wooburn Common and Wooburn Moor.

Check out our reasonable rates and support **YOUR** community magazine

Call 01628 525 413 or email advertising@targetmagazine.org.uk

FREE TRIAL OF AFTER SCHOOL EDUCATION

Kumon - one of the leading after-school education providers is running a two-week Free Trial from September 21 until October 31. Kumon exists to provide as many children as possible with a specially tailored opportunity to learn.

Children can take advantage of the Kumon free trial in either, or both, English and maths. It also gives parents an insight into how the Kumon method can benefit their child, without any financial commitment. The offer is open to families who are new to Kumon.

After the free trial parents can decide whether to continue the programme when fees would be payable. For further information on the free trial please contact Karen Saunders, Instructor at the Flackwell Heath study centre on 01628 532620 or email: flackwellheath@kumoncentre.co.uk

DO YOU KNOW THIS MAN?

This is the face of **Tony Elder**

TONY ELDER
BOURNE END GARAGE
01628 533 236

Tony Elder has been synonymous with car care in Bourne End for over 40 years and he has taken over Bourne End Garage, where, he says "No job is too much trouble".

Call in for a chat and speak directly to the person who will be undertaking the work.

BOURNE END GARAGE
1 OAKFIELD ROAD, BOURNE END
TEL: 01628 533 236

SERVICING • EXHAUSTS • TYRES • WELDING • MOT'S ARRANGED
LOCAL COLLECTION BY ARRANGEMENT

Cutting Edge

All in one hair beauty & barber shop

49 The Green
Wooburn Green
HP10 0EU

t. 01628 526070
www.cuttingedgewooburn.co.uk

Top Knots & Tiaras

Girls Parties Now Available

Every once in a while - take the scenic route

Classic motors take centre stage...

A fantastic turnout of classic British and American cars, pick-ups, bikes, trikes and hotrods turned heads at the annual car show at Hedsor Social Club in June. Here are just a few of our favourite rides...

(photos by Julie Creswell)



The CACI Pod



- * Facial Lifting * Lines/Wrinkles
- * Eye Bags * Microdermabrasion
- * Skin Hydration * Neck Treatments
- * Cellulite, Stretch Mark Treatments
- * Local Life NAD

Our CACI Ultimate lifting treatment is both preventative and rejuvenating

Save your face a workout! Give your face a lift!

thecacipod@yahoo.com Tel/Text 07901 276977

Magnolia House, Bourne End, Bucks SL8 5TZ Visit: www.caci-international.co.uk for more information

20% off any course with this advert

Off down under...

Eight girls from Bourne End and Wooburn Green are currently on a trip of a lifetime in Australia for three and a half weeks. The 16 and 17 year old students from Beaconsfield High School have been fundraising for more than two years for the biennial netball and hockey tour down under. They will travel the East coast and visit Darwin, Townsville, Whitsunday Islands, Brisbane, Melbourne and Sydney. During this time the girls will train, play matches, watch the Netball World Cup and visit a number of tourist destinations such as Australia Zoo, Sydney Harbour Bridge and the Great Barrier Reef. Full report to come in the next issue of *Target*.

Your local Drycleaners at your service

Regular Discounts

Follow us on Facebook and Twitter, or sign up on our website for regular promotions and discounts.



BLUE DRAGON
LAUNDRY & DRY CLEANING

Regular discounts
www.bluedragondrycleaning.co.uk

Pop into your local Blue Dragon at 62 The Parade, Bourne End for a full range of drycleaning and domestic laundry services, including our super speedy 2 hour mat same day drycleaning options. We can even take care of your repairs and alterations. Branches also at: Beaconsfield, Gerrards Cross, Great Missenden and Ickenham.

<p>Your Boutique End: Blue Dragon</p> <p>62 The Parade, Bourne End, Bucks. SL8 5SB</p> <p>Tel: 01628 322358</p>	<p>Opening Hours</p> <p>Monday - Friday 8.00am to 5.30pm</p> <p>Saturday 8.00am to 4.00pm</p> <p>Sunday: Closed</p>	<p>It pays to use Blue Dragon</p>  
---	---	---

WOOBURN PARK LAWN TENNIS CLUB

Three floodlit, artificial grass courts and new clubhouse

Senior, junior, mid-week and family membership options.

For more information email wpltc@sky.com or visit www.wpltc.org.uk

FOR HIRE

St Mark's Church Hall
Station Road, Bourne End SL8 5QE
Reasonable Rates

Enquiries: 077430 37938



SCAN Sports Club Activities and News

ABOUT BOURNE END JUNIOR SPORTS CLUB

Founded in 1970 Bourne End Junior Sports Club is a registered charity run by volunteers to provide sport and recreation for children and young people, with many being highly qualified in their own sport. The New Road Sports Hall was built in 1982 and later extended to include a climbing wall and a club room. The multi-sport centre is used extensively by club members and members of the whole community. Please visit our website for more information www.bejsc.co.uk

Develop your child's passion for swimming

If your child loves swimming and is ready to move on from introductory swim lessons, then BEJSC can help develop your child's passion for swimming. BEJSC has a *learn to swim programme* that focuses on developing swim technique and stamina as an introduction to competitive swimming. We run this programme on Friday evenings at Court Garden Sports Complex in Marlow. Entry is generally for those who can swim a width and we develop up to being able to swim a length in three strokes. Children then move to the main club where they have the opportunity to both train for swim fitness and also for regular competitions. We are a key swimming provider in the area with around 80 swimmers taught in our *learn to swim programme* and more than 100 in our competitive swimming section. To find out more and arrange a swim assessment please visit www.bejscswimming.org.uk/learntoswimintroduction.php

Football section

In June, the football section held its 22nd Sportsfest football tournament at Wooburn Park, with a record number of 150 teams taking part, including four teams from Bourne End's twin town in France, Octeville-Sur-Mer. The Bourne End teams did very well, with our U12s winning the Colts competition, our U14s reaching the final and our U9s, U13s and U13s Colts all reaching their respective semi-finals. See photos page 31.

We are looking forward to next season. Our development squads (U7s to U12s age groups) will continue to play a mixture of non-competitive and competitive matches, while our U13s to U18s age groups will play competitive league and cup matches. In addition we will be holding our very popular Junior Kickers sessions at the sports hall on Saturday mornings for U5s and U6s, which is a great way for children to be introduced to football and offers them a structured pathway within the club to develop their football skills (at less than £3 per session). We will also have a new U21s team and would like to start a Girls U10s to U12s team, but to do so we need volunteers to manage and coach, and players for the team. We have training/match facilities available, so we just need volunteers and players to make it happen. Come on girls – you could be world stars like our England Girls Team!

We are always looking for new players to join the club at all age groups, especially our U7s, U8s, U9s and U13s, so if you are interested in joining BEJSC or being part of the new girls team, please call Ken Murphy on 01628 525359 or e-mail info@bejsc-football.co.uk



Annual Awards Evening

We hosted our Annual Awards Ceremony in July. Our special guest was Charlie Walker a paralympic athlete competing in sitting volleyball and wheelchair rugby (pictured centre). As a class D amputee, Charlie was re-introduced to world class sport in 2009 at the Amputee Games in Stoke Mandeville, where his passion for fast paced, powerful games was reignited. Charlie quickly earned himself an enviable 50 caps for Team GB. At London 2012, Charlie made his

Paralympic debut and was part of the men's sitting volleyball team which finished in a highly respectable 8th place. In addition to this Charlie also won the Adaptive Athlete of the Year at the Army Sports Awards. Currently he is training for a place in Rio 2016. In addition to sitting volleyball, Charlie plays wheelchair basketball and his local team is the Aces who train in our sports hall.

Volunteers recognised

BEJSC could not run without them! This year our special awards recognised Andy Ruler - head swimming coach for many years, Marleen James, senior swimming coach for 13 years, and Sarah and Neil Ralphson, football section supporters. In addition 25 adults received long service awards ranging from 5 to 10 years, and 11 young people were recognised for their contribution to the life of the club in various sports and activities.



Climbing parties

Did you know you can book a climbing party at the BEJSC Sports Hall? We cater for ages six and over; participants need no experience as they will be guided by our instructors. Please phone for details on 01628 528110 or email office@bejsc.co.uk

Visit our website – www.bejsc.co.uk for more information.

Classes for adults - Pilates class is on Thursday evenings from 6.30 – 7.30pm. This gentle form of exercise is suitable for all ages. The following classes are run at the Sports Hall: Monday fitball 9.30 to 10.30am; Tuesday 4pm to 4.45pm stretch class. Please contact us on the number below for more details.

Treatment Room – for all your aches, pains and injuries contact Wendy at The Sport Massage Clinic on 01628 528226. **Acupuncture** available with Ray Siberini – call 07748 968762, www.acupuncture-balance.co.uk

For information on clubs using our premises please contact the sports hall www.bejsc.co.uk
email: office@bejsc.co.uk. Chairman & Editor: Liz Hutton 01628 478168
Manager: Pete Sherwood 01628 528110 mobile 07710 132424
Sports Hall: (answerphone) 528110

Need an Electrician?



SELLECK ELECTRIC
ELECTRICAL CONTRACTORS AND TESTING SPECIALISTS
 S.D. & R.A. Selleck
 Electrical Installations Ltd.
 3 The Green, Wooburn Green, High Wycombe,
 Buckinghamshire, HP10 0EE
Tel: 01628 525278
Fax: 01628 810373
www.sellecks.co.uk

Wooburn Wheels
 Service & Repairs, Children's Bikes, Adult Cycles,
 Good Selection of Accessories.

Tools, Appliances & Accessories
COMPETITIVELY PRICED: Kettles, Irons,
 Toasters, Hair Dryers, Coffee-Makers, Shavers,
 Fryers, Lamps, Cable by the metre, Hoover Bags,
 Plugs, Lampholders etc.

N.I.C.E.I.C. Approved
 Portable Appliance Testing
 All electrical installations and
 rewiring undertaken.

Peter Moys
Local handyman
01628 529714

No job too large or too small
 Reasonable rates agreed prior to the work
peter.moys@yahoo.co.uk

Mobile: 07502 305 894

No VAT charges on labour
 Fully insured | Free estimates

Established 1968

BRYAN NEWELL & SON
 20 Fennels Farm Road
 Flackwell Heath



Tel: 01628 525329/524294

All Plumbing & Heating
 Specialising in Bathrooms
 Floor & Wall Tiling & Decorating

Reasonable Rates
 No job too small

John M Wilks
Heating and Plumbing
 EST 1971
 Specialising in power flushing and
 cleaning of all types of domestic
 heating systems



Tel: 01628 527020
 Mob: 07802 946209

www.buckspowerflush.co.uk
info@buckspowerflush.co.uk

*If you are reading this
 advert... then others will
 be too!*

Advertise in TARGET and
 get your message into more
 than 5,000 local homes
 every two months.
 Call 01628 525415 for our
 rate card

Community Minibus for Hire

12 Comfortable Seats
 Reasonable Rates
 Needs own driver

Contact Sue
 at the Community Centre
01628 522604

PIANO LESSONS



Offered by experienced teacher
 in a Bourne End home setting.

Children and adults welcome

ROBIN SHELDON
 phone – 01628 530174
www.piano-lessons-rtts.co.uk

 **TARGET READER SERVICE**
 Useful Telephone Numbers

- BOURNE END COMMUNITY CENTRE** 01628 522604
www.bourneendbucks.com
- POLICE** 101 **EMERGENCY** 999
 CRIMESTOPPERS 0800 555 111
www.thamesvalley.police.uk
- POST OFFICES** www.postoffice.co.uk
 Last collection time:
 Bourne End, Furlong Road 5.15pm 01628 520050
 Flackwell Heath 4.45pm 01628 520524
 Wooburn Green 5.00pm 01628 522939
- DOCTORS' SURGERIES**
 Hawthornden Surgery, Wharf Lane, Bourne End SL8 5RX
 Dr S H Buxton, Dr M Wolfen, Dr T Hussain, Dr P Newman, Dr S
 Abbas. Branch Surgery – 47 Straight Bit, Flackwell Heath,
 Bucks HP10 9NE
 MESSAGES, VISITS & APPOINTMENTS 01628 522864
www.hawthorndensurgery.co.uk
 HEALTH VISITORS' SERVICE 01628 482788
- Cherrymead Surgery, Drs King, Fraser, Elias, Hettiarachchi and
 Payne
 Queensmead Road, Loudwater, High Wycombe HP10 9XA
 MESSAGES, VISITS & APPOINTMENTS 01494 445150
www.cherrymeadsurgery.co.uk
- Pound House Surgery, 8 The Green, Wooburn Green HP10
 Dr Elizabeth Bailey, Dr Raj Thakkar, Dr Shareen Hallas,
 Dr Emma Southworth, Dr Mia Murray
- Also at: Orchard Surgery, Station Road, Bourne End SL8 5QE
 MESSAGES, VISITS & APPOINTMENTS 01628 530 997
www.poundhousepractice.co.uk
- NHS** 111 or www.nhsdirect.nhs.uk
- HOSPITALS**
 Amersham Hospital, Whielden Street, Amersham,
 Bucks HP7 0JD 01494 434411
 Wycombe Hospital, Queen Alexandra Road, High Wycombe,
 Bucks HP11 2TT 01494 526161
 Stoke Mandeville Hospital, Mandeville Road, Aylesbury, Bucks
 HP21 8AL www.buckshealthcare.nhs.uk 01296 315000
 St Mark's Hospital, 112 St Mark's Road,
 Maidenhead SL6 6DU 01628 632012
 Wexham Park Hospital, Wexham Street, Slough SL2 4HL
www.heatherwoodandwexham.nhs.uk 01753 633000
- BOURNE END DENTAL PRACTICE**
 Station Road, Bourne End, SL8 5QF 01628 523353
 Mr G Goodall, Mr S Rees, Mr A Chandrapal, Mr A Powell
 Mon–Thurs 8am - 5pm. Fri 8am - 4pm. Sat 9am - 2pm
www.bourneenddental.co.uk
- ASH TREE HOUSE DENTAL SURGERY**
 6 The Green, Wooburn Green HP10 0EE 01628 532932

BROOKHOUSE VETERINARY SURGERY
 61 - 63 The Parade, Bourne End SL8 5SB
 www.brookhousevet.co.uk 01628 525274

DAY CENTRE, Wakeman Road, Bourne End SL8 5SX
 01628 527024

WYE VALLEY VOLUNTEERS, Portacabin, Wakeman Road
 Bourne End SL8 5SX 01628 521027

BOURNE END LIBRARY
 Wakeman Road, Bourne End SL8 5SX 0845 2303232
 Sunday & Monday closed. Open from 9.30am, half day on
 Wednesday. Open Saturday until 2pm. Late Night on Tuesday
 www.buckscc.gov.uk/bcc/libraries/branches/bourne_end.page

British Rail Passenger Information 08457 484950
 Bourne End Station, Station Road, Bourne End SL8 5QH
 www.nationalrail.co.uk

Carousel Buses www.carouselbuses.com 01494 533436
Arriva Bus Company www.arrivabus.co.uk 0844 8004411

North Thames Gas Emergency (Slough) 0800 111999
Southern Electricity Emergencies 08457 708090
Thames Water Supply Emergencies 0800 714614

THE SAMARITANS 08457 909090
 THE SAMARITANS Katharine House, 17 Uxbridge Road,
 Slough, Berks SL1 1SN

CITIZENS ADVICE BUREAU 01628 621006

BUCKS COUNTY COUNCIL, County Hall, Walton Street,
 Aylesbury HP20 1UA www.buckscc.gov.uk 0845 3708090
 Highways (Transport for Bucks) 0845 2302882
 Citizens Advice Consumer Helpline 0845 4040506

WYCOMBE DISTRICT COUNCIL
 Queen Victoria Road, High Wycombe HP11 1BB
 www.wycombe.gov.uk 01494 461000

SCHOOLS
 Claytons County Combined, Wendover Road, BE, SL8 5NS
 www.claytonsprimary.ik.org 01628 525277
 Little Marlow School, School Lane, Little Marlow SL7 3SA
 www.littlemarlow.bucks.sch.uk 01628 473316
 St Paul's School, Stratford Drive, Wooburn Green HP10 0QH
 www.st-pauls.bucks.sch.uk 01628 521553
 The Meadows School, School Road, Wooburn Green
 HP10 0HF www.themeadows.ik.org 01628 521634
 Wye Valley School, New Road, Bourne End SL8 5BW
 www.wyevalley.bucks.sch.uk 01628 819022

WOOBURN & BOURNE END PARISH COUNCIL
 Council Offices, Town Lane, Wooburn Green HP10 0PS
 www.wooburnparish.gov.uk 01628 522827

LITTLE MARLOW PARISH COUNCIL
 Community Office, The Pavilion, Church Road, Little Marlow
 SL7 3RS
 www.littlemarlowparishcouncil.org.uk 01628 890301



Tailormade trips
BEACH HOLIDAYS
 honeymoons
 city breaks

As your local **Travel Counsellor** with years experience in the travel industry, I can
 tailor make your perfect holiday. Available at a time to suit you, I will provide an unparalleled
 level of personal service, taking care of all your travel needs down to the finest detail.

Everything you book with Travel Counsellors is financially protected including hotels, low
 cost airlines and car rental at no extra cost!

SUE CLARIDGE Travel Counsellor

T 01628 876080
E sue.claridge@travelcounsellors.com
W www.travelcounsellors.co.uk/sue.claridge

Travel Counsellors always complete bookings protected by ATOL licensing



The Kings Head
 Church Road, Little Marlow
 Tel: 01628 484407

We serve a wide variety of hot and cold food every lunchtime and evening and all
 day Sunday from 12 noon to 7pm, plus a good selection of cask conditioned ales
 and fine wines. In the wintertime there are log fires and in summer a large
 garden. The Pavilion function room caters for any type of party including
 conferences for up to 50 people. Please telephone 01628 484407 for details.

**BUCKS DISCOUNT
 CARPET WAREHOUSE**
"For a welcome home"

'Simply the best'
 For friendly, professional
 advice from a
 well established local
 family-run company.
 Visit our showroom
 or call us on
01628 522716
Fax 01628 529076

- 25,000 sq m of carpets
in stock
- Vinyl department with
huge stocks
- Superb new rug department,
fantastic selection
- 1000's of samples
for selection

32 The Parade, Bourne End
 www.bucks carpets.com
 e-mail: sales@bucks carpets.com

Joe Griffin TV AERIAL SERVICES

- Ⓞ Poor Reception Solved - Aerial repaired & supplied
- Ⓞ TVs - Hang on your wall for you. Also supplied & tuned
- Ⓞ Extra TV Points - For aerial and Sky (in HD)
- Ⓞ Sky TV - Also Foreign Language TV

Call Marlow
01628 439115

A part of  OXFORD AERIALS

STEVE HOBSON Plumbing & Heating

Boilers, Gas Fires, Cookers,
Servicing, Installations and
Repairs,
Gas Safety Landlord Certificates,
Unvented Systems & Plumbing,
Vaillant approved installer

Tel: 01494 524357
Mobile: 07762 082984



Pilates Matwork Classes

Beginners/Mixed Level and Intermediate
One to one by Appointment

Venues - Abbotsbrook Hall and
Upper Thames Sailing Club - Bourne End
Little Marlow Pavilion
Marlow Pilates Studio, High Street, Marlow
Call Sally on 0787 625 1967

For fast, friendly & affordable
taxation advice

Tax Returns/Self Employed Accounts etc.

Home visits & evening appointments available

For a quote, ring Keith on
01628 520426

or visit our website at

www.randallassociates.co.uk

for further details

Keith Randall ATT

Randall Associates

90 Shefford Drive, Wooburn Green HP10 0QH

BOURNE END ROOFING

- Re-roof our speciality
 - New roofs & repairs
 - Slating, tiling & leadworks
 - Free estimate & 10 yr guarantee
- Freephone 0800 298 3158

DAVID HARRIS Electrician

FOR ALL YOUR DOMESTIC WIRING

Qualified & Experienced with
Electricity Board - Part P

TELEPHONE: 01628 810349

TO HIRE
ABBOTSBROOK HALL
For Wedding Receptions
Meetings, Dances, etc.

APPLY TO
MRS C SAMUELS
2 RED COTTAGES
WELL END
or telephone
01628 528936

AMPLE CAR PARKING SPACE

The Phone Man

Need a new
telephone
socket for
your
computer or
SKY box?

Need one moved or repaired? Broadband signal
problems? Internal wiring problems? BT not
interested or you don't want to pay their very high
charges? Call John on 07709 895252 or 01494
711744 for free advice, fast service, and quality
work. All work and materials guaranteed.

john.summerbell@btinternet.com

Chiropody

Bourne End
Community Centre

Monday Mornings
07986

606814

For the treatment of all
Foot Ailments



Kingfisher
Building Consultancy

Thinking of extending?

We offer:

- Full architectural design service
- Planning and building regs applications
- Extension, loft conversion & remodelling
- Party Wall surveyor services
- Building and development consultancy

For professional, friendly advice, please
phone Bourne End (01628) 526998



ALL THE LATEST NEWS ON
www.bourneendbucks.com
LOG ON NOW!

TRYING TO JUGGLE
YOUR CHILDCARE?

Cookham Montessori School
For children aged 2-5 years

We are extending our hours to offer a
flexible package for busy mums!

Mix & match your daily requirements:

- Session start times: choose from 8.30am, 9.00am, 9.30am or 12.30pm
- Session finish times: choose from 12.30pm, 1.30pm, or 3.00pm

Funding available for 3 & 4 year olds

Term Time Only

Ofsted Validated

Phone 01628 529414



www.cookhammontessori.com

EMMETT CONSTRUCTION DEVELOPMENTS LTD

Extensions – Conversions

Refurbishments – New Buildings

Private & Commercial Work Undertaken

Tel/Fax 01628 524500

e-mail: emmett123@btconnect.com

DIAMOND & SAPPHIRE CELEBRATIONS

Dorothy and Charles Boughtflower

For Dorothy and Charles it has been a whirlwind romance which started on a blind date, progressed to a proposal 13 weeks later and celebrated a Diamond Wedding Anniversary on June 25. "And a lovely card of congratulations from H M The Queen," that Dorothy showed with great delight.

They were married at St Michael and St Martin's in Hounslow and eventually moved to Goddington Road in Bourne End when their son Howard was six months old. "We had no carpet on the stairs but we loved the house." Second son Adrian was born in Goddington Road.

Charles was a design engineer in the motor car industry. "Everything from wiper blades to lighting and other components," he recalls. He designed the lighting for the C5 electric car designed by Sir Clive Sinclair which was revolutionary in its day. Charles moved on from there to setting up his own business. Dorothy's legal secretary experience helped her secure a job as school secretary at Claytons where she worked for 22 years.

Charles was one of the founder members of Bourne End Junior Sports Club and ran the football section. "When we started the club we put notes through all the doors in the village and expected about 50 youngsters to turn up. We got over a 100."

Dorothy has always attended St Dunstan's Church and helped with fundraising and is a Eucharistic Minister.

Then in 1974 they moved to a house along the Marlow Road called Copper Beech. It was the family home for 40 years before they made the decision to downsize and bought a bungalow in New Road. "We needed something smaller with less garden and no stairs," Dorothy explains.

It's still a busy life for them and they both keep active – Charles with short tennis and table tennis while Dorothy does keep fit. And they cannot believe that blind date was over 60 years ago.



Diana and John Spokes

Sapphire is the celebration for Diana and John as they happily recorded 65 years of marriage on July 8.

Smiling together they look at their wedding photograph as Diana remembers that everything was borrowed. "I was lucky that a friend's daughter was my size so her wedding dress fitted me." They were married in St Mary's Church in Kidderminster.

By 1959 they were living in Goddington Road among lots of other young couples. They were involved in local activities at the community centre and the annual carnival. John remembers creating a 'Beat the Clock' competition to see how many packets of crisps could be eaten in a certain time. "It was a great success," he says, "but would be frowned on today as the kids opened and ate packet after packet."

Moving to a house on the river they met Molly Rayner who invited them to the AGM of the RNLI group in 1977 and before long they were both on the committee. As Diana set about fundraising she persuaded John to get more involved "so they could do something together." The rest is a history of close to 40 years of dedication to the RNLI.

Their next move was to a bungalow in Chapman Lane. Diana worked in Shortlands when it was Bourne End's departmental store. "It was so versatile" she says "with overalls and donkey jackets as important as children's clothes and shoes. Customers used to pay into a weekly club to cover their needs." Like many people she was saddened when business changes eventually saw its closure.

Along with the wedding photo was their wedding reception bill which totalled 32 pounds, 17 shillings and seven pence for 55 guests. "What do weddings cost these days?" Diana laughs. "And my dad still wanted to know who had drunk all the gin."

Celebration Tea 
One Hundred Years

Afternoon Tea
with the
Polka Dot Singers 

Tuesday 15th September 2015
at 2pm
Bourne End Community Centre

Tickets £6 from bournendwi@yahoo.com
or
Bourne End Community Centre 01628 522501

Join us for tea and cakes,
melodies from the Polka Dots,
and a fond look back at 100 years of the WI


BROOK HOUSE
VETERINARY SURGERS

61 - 63, The Parade, Bourne End
Tel: 01628 525274

enquiries@hallplaceveterinarycentre.co.uk
www.hallplaceveterinarycentre.co.uk

Bourne End Home Security Systems Ltd.

DOMESTIC AND COMMERCIAL
INTRUDER ALARMS
CCTV
INTERCOMS
SECURITY LIGHTING
FIRE ALARMS

- Local priority valued customers
- 50% off insurance approved
- Audible and monitored systems
- No bonding contracts
- Existing systems maintained and repaired
- 20 years experience
- 24/7 NBI (not monitoring)

Your local security expert
For a FREE survey, contact us today!

01628 520162
rogeriam@behss.co.uk
www.behss.co.uk

Be The Customer
Funding Your
Business First
B2B SALE




Happiness is no laughing matter!

I

a good story

Outdoor theatre in the Water Garden at Cliveden

The Sorcerer's Apprentice

Thursday 27 & Friday 28 August, 7.30pm
Adults £16, Children £11.50 - 10 years

The Three Musketeers

Saturday 29 August, 7pm
Adults £16, Children £11.50

Twelfth Night

Saturday 7 September, 7pm
Adults £16, Children £11.50

01628 229 894 www.nationaltrust.org.uk/cliveden
Cliveden, Tapscott, 35 Watlington Rd, Uxbridge

National Trust



ashtonopticians
OPTOMETRISTS

Your independent practice in Flackwell Heath for value, style and personal service

- NHS and Private Eye Examinations
- Digital imaging and OCT scanning
- Behavioural Optometry & Vision Therapy
- Wide range of NHS, budget and top designer spectacles
- Contact Lenses
- Prescription and non prescription sunglasses
- Specialist sports eyewear
- All types of contact lens fitted and supplied

01628 530420 www.ashtonopticians.co.uk

Mark Ashton BSc(Hon) MCOptom, Bob Ashton BSc(Hon) MCOptom
1 Acorn House, Straight Hill, Flackwell Heath



JACQUI JONES PERSONAL TRAINING

Fed Up Being Overweight & Unfit?

Want To Kick Start Or Improve
Your Fitness Regime?

I Can Help You!

Fully Qualified Personal Trainer

For A Free Consultation
07595223314

www.jacquijonespersonalfitness.co.uk

train@jacquijonespersonalfitness.co.uk

Train at Home or at Private Gym
In Flackwell Heath

fairfield framing

Bespoke picture framers
in Bourne End



01628 529646



07976 883856

debporrish@aol.com

Established since 1983

JDM PLUMBING & HEATING LTD

24 New Road
Bourne End
Bucks SL8 5BH

Tel/Fax: 01628 529434
Mobile: 07796 928993



Jamie De Muynck
Director

TECS 19 Ltd Pest Control

- Wasps
- Insects
- Rodents
- Foxes
- Rabbits
- Birds

Please Call

Tel: 07979 808809
tecs19ltd@gmail.com

2015 Wooburn Festival

A Festival for the Chilterns and Thames Valley

28 SEPTEMBER - 31 OCTOBER

1st 2nd & 3rd Wednesdays of the Festival
Lunchtime Music 1.15pm
 30 Sep: Gerard Casades (violin)
 7 Oct: Andrew Thompson (flute)
 14 Oct: Robert Chung (piano)
Free All Saints Parish Church, High Wycombe

Fri 2 OCT 7.30pm
Donizetti's Opera
L'elisir d'amore
Fully Staged by Barefoot Opera
 Community Centre, Wakeman Road, Bourne End
£16 (adults half price)

Sat 3 OCT 8.45pm
Come & Sing Day
with the Wooburn Singers
Based around Mendelssohn's Elijah
 The Beaconsfield School, Beaconsfield, HP9 1SA
£20; Book at singday@wooburnsingers.org.uk

Fri 8 OCT 8.00pm
Chamber Concert
Piano Recital - Martin James Bartlett
(Winner of BBC Young Musician of the Year Competition)
 St Paul's Church, Wooburn
£16 & £10 (restricted view) - (students half price)

Sat 19 OCT to Sat 17 OCT
Visual Arts Exhibition
Official Opening Saturday 19 Oct 11.00am to 1.00pm
Public view 40 Oct 2-4pm to 11-13 Oct 10am-4pm
 19 Oct 10am-4pm to 17 Oct 10am-4pm
 St Paul's Church Hall, Wooburn
Admission Free

Sat 10 OCT 8.00pm
Jazz Quintet Supper
*Amy Roberts, Richard Exall,
 John Critchinson, Dave Green, Steve Brown*
 Royal British Legion, **LOUDWATER**
£18 (students £10) including supper.

Sun 11 OCT 8.00pm
Festival Film
"TRASH"
(Director Stephen Daldry - of Billy Elliot fame)
introduced by Quentin Falk
 National Film & TV School, Station Rd, Beaconsfield
£8

Tue 13 OCT 8.00pm
Chamber Concert
The Heath String Quartet
 St Paul's Church, Wooburn
£16 & £10 (restricted view) - (students half price)

Fri 18 OCT 8.00pm
Chamber Concert
Dan Cornford (viola) & Marisa Cornford (piano)
 St Paul's Church, Wooburn
£16 & £10 (restricted view) - (students half price)

Sat 24 OCT 8.00pm
Folk Supper
Jim Causley & Lee Rahn
*Five lines. A rising star
 BBC Radio 2 Folk awards from Gladstone*
 Royal British Legion, **LOUDWATER**
£18 (students £10) including supper.

Sat 24 OCT 7.30pm
Choral Concert - Wooburn Singers
Dvořák's Stabat Mater
 All Saints Parish Church, Marlow
£15 (students £5)
BOX OFFICE :: 01494 440459 or info@wooburnsingers.org.uk

Thu 29, Fri 30, Sat 31 OCT 7.30pm
Musical :: Pilgrim
*A modern take on Pilgrim's Progress
 by Ian Wallace and Mark Borden*
 St Andrew's Church, Hatters Lane, High Wycombe
£8 concessions £6

Wed 14 Oct 8.00pm
The World of Paul McCartney: Journalist and author Paul Du Noyer
discusses the veteran rock icon with Quentin Falk
£8 Beacon Centre, Holtspur Way, Holtspur, Beaconsfield, HP9 1HL

Mon 28 SEP to Fri 16 OCT :: The Festival in the Library :: Wakeman Road, Bourne End SL8 5SX

Date	Time	Event	Price
Mon 28 Sep	7.30pm	Thames Landscape - A Photographer's Perspective :: Rod Bird	£4
Tue 29 Sep - Fri 16 Oct	Library Hrs	Photographic Exhibition	Free
Tue 29 Sep	7.30pm	Droppers Vineyard - Making prize-winning wines in Buckinghamshire :: John Peterson	£4
Wed 30 Sep	7.30pm	Anatomy of the Novel :: Dr Alberto Casali	£4
Thu 1 Oct	7.30pm	A Time for Verse - Inspired by Einstein and local artists :: Midpoint Poets	£4
Sun 4 Oct	2-5.00pm	Mask making for Saint-Saens' Carnival of the Animals :: a musical workshop for children	£5

MORE EVENT DETAILS on WEBSITE :- www.wooburnfestival.com
BOX OFFICE :: Website or Bourne End Library [except when stated otherwise above]

TICKET BOOKING

- Book on Line: Book on line at wooburnfestival.com by credit/debit card or PayPal.
- Book at Bourne End County Library (Wakeman Road, Bourne End, SL8 5SX). During normal Library Opening Hours ONLY
 - By Post. Complete and post this form enclosing a cheque (Payable Wooburn Festival Society). Tickets will be at the Event Door.
 - By Hand. Complete and take this form to the Library. Pay by cheque/card or cash. Tickets will be issued by Library.
 - By Phone. Ring 07745-730595. Pay by card. Tickets will be at the Event Door.

Name	Address	Postcode	Telephone	Date	Event	Price	Quantity	£ Total
				28 SEP	Thames Landscape	£4	0	
				29 SEP	Droppers Vineyard	£4	0	
				30 SEP	Anatomy of the Novel	£4	0	
				1 OCT	A Time for Verse	£4	0	
				2 OCT	Open	£16 St: £8	0	
				4 OCT	Carnival of the Animals	£8	0	
				9 OCT	Martin Bartlett Piano	£16 £10 St: £8	0	
				10 OCT	Jazz Supper	£18 (incl. sup)	0	
				11 OCT	Film Night "Trash"	£8	0	
				13 OCT	Heath Quartet	£16 £10 St: £8	0	
				16 OCT	Visual Arts Festival	£18 £10 St: £8	0	
				24 OCT	Folk Supper	£18 (incl. sup)	0	
				29,30,31 OCT	Musical Pilgrim	£8 Conc: Free St: £6	0	
				29,30,31 OCT	Folk Supper with Du Noyer	£8	0	
								Ticket Total Cost

This year there are no Administration Charges



Take Your Target

Dorothea and Jimmy Heyes pose for their Diamond Anniversary photograph together with a copy of *Target* (June/July) which had featured their anniversary story.

Daughter Penny had taken them away for the occasion and they stayed on the shore of Lake Garda, the largest lake in Italy.



Action! at Claytons

Claytons Primary School had a 'Film Week' at the beginning of June where the pupils learnt all about film making and video editing.

Aardman Productions visited and everybody in the school made a model of Shaun the Sheep or Gromit, and some pupils even made their own animations with the models. There was a visit from a BAFTA winner, and some of the pupils got to hold the BAFTA. The highlight of the week was making a whole school film that told the adventures of a cardboard box. Everybody gathered in the hall on the last day of Film Week dressed as their favourite film character to watch their own short film. A great week was had by all.

The day before the anniversary, which was also Dorothea's birthday, they enjoyed a day trip by boat which included a stop in Peschiera where there was a huge war memorial. The town played a big part in military campaigns in northern Italy during the Napoleonic Wars. It is also well known for its military jail which closed in 2002.

They told us it was a lovely relaxing break for everyone..

Richard Hyde (right) posed for this photo after running up the Rock of Gibraltar with his copy of *Target* magazine. The run was just under 5.5 miles with a climb of 960 feet, during which Richard burnt 933 calories and lost 721 ml (1.25 pints) of water. The monkeys don't look too impressed, but we were.

Richard was in Gibraltar with his sisters, Lucy and Tracy, and parents, Stuart and Diana Hyde from Hedsor Road, who were there to celebrate their 50th wedding anniversary.



The retirement savings you didn't know you had

Do you have retirement plans you hope to achieve? Or parents whose retirement income is not enough? Have you any home improvements to make or family members you want to support financially? Perhaps a dream destination to visit?

In 2013 more than 19,000 homeowners accessed an average of £60,000 of their property value to spend as needed while remaining the full owner of their home and with no monthly repayments to make.

This is a Lifetime mortgage. To understand the features and risks ask for a personalised illustration.

A Lifetime mortgage is a form of equity release which enables homeowners aged 55 and over to access their property wealth. Equity release can affect your entitlement to state benefits and grants.

A typical advice fee of £1,295 is only payable upon completion of a plan. Equity release may affect the size of your estate over time.

Source: The Telegraph, 2014

Your home can play an important role in helping you achieve your plans



Features:

- Release equity tax free from your property
- Retain 100% home ownership
- Option to guarantee an inheritance
- No monthly payments unless chosen
- Never owe more than the value of your home

Other uses for equity release:

- Supplement your income
- Boost your business
- Pay off a mortgage on any property

ATTFIELD JAMES Financial Management Ltd

Swan House, 4-6 Market Street, Maidenhead, Berkshire SL6 8AB.

Telephone 01628 623600 Fax 01628 773770 email: abattfield@aol.com

www.attfieldjamesfinancialmanagement.co.uk

Babes and boilies*

A fishy tale by Michele Smith of the Bourne End Anglers

Originally, when my husband suggested that I should go fishing with him, I was overwhelmed. I wondered what excuse I could make not to go, but as we were courting at the time I thought I would go, take a book, some sandwiches and a flask and wave the flag just the once.

To my absolute surprise I had a great day, never looked at my book and couldn't wait to have a go.

Having never been fishing before and being keen to go again, we went fishing together and for many weeks he spent most of the time untying my line from trees, bushes and undoing knots. Finally I kind of got the hang of it.

He then suggested that I join the Bourne End club. I was terrified as I was a novice and I knew guys may want to escape from the world of women and go fishing and I was concerned that as the only female I might upset the peace and tranquillity they had been accustomed too. He said I was being silly so I joined.

I cannot tell you how pleased I am that I did. I am still inexperienced in comparison with my colleagues, but we have been to so many great places and I have enjoyed every day. I feel sometimes in the winter when it is freezing that I am as mad as them when getting out of a lovely warm bed in the middle of the night (not really just feels like the middle of the night) to go fishing, but once at the venue it is all forgotten.

The troubles of the world disappear and it is a great way to relax. It is not boring as there is so much to do, keep the line tight, watch for the bite, the thrill of the catch (especially carp) the land of the fish. The splash of the fish as you reel it in, when everyone turns and looks to see what you have caught. The fun of hoping your fish are bigger than the other guys' fish.

Also there is the enjoyment of the countryside, all the wildlife, the change of the seasons and the difference in the fish is unbelievable. I never knew they were so different, not only in colour but how they perform when they are caught. There truly is nothing like playing and landing a carp, or a barbel.

The fish are so clever too, they seem to just know when you are off your guard and away they go with your bait.

Diverse

Bourne End Anglers do not have their own waters, but personally I think that is a good thing as we fish a diverse number of venues and are not restricted to the same old places. The guys I fish with made me feel welcome and I do not feel out of place when I go fishing with them. I am just one of the guys myself and swear just as much when my fish gets off the hook and yes I really want to beat the rest of them.

It is also great to have a hobby that you can do together with your husband/partner. Nothing more relaxing than going off for the day into the middle of nowhere with a packed lunch and having a day together fishing by a river or a lake, then coming home and chatting and laughing about the one or many that got away. It is always the largest fish that got away.

One of the most embarrassing occasions I recall was when I was fishing our Christmas match a couple of years ago. As I cast, something took my bait straight away. To my horror my line was snatched by a pigeon, the bait and hook was taken up into a huge tree and left there. The pigeon then flew away leaving me snagged up in the tree. It took some 30 minutes to get myself untangled from the tree much to the amusement of the rest. The next day my husband's mate left a plastic pigeon in my garden with a hook in its mouth. Just when I think this occasion has been forgotten I get another pigeon. I am getting quite a collection.

I am so glad I was introduced to fishing, I absolutely love it and I am proud to be a member of Bourne End Anglers as they are a small friendly group and made me feel welcome.

Call 01628 851001 for more information on joining the Bourne End Anglers.



*Boilies are boiled paste fishing baits which last in the water

Sapphire
Elegant dresses
For hire and sale!

- Evening
- Prom
- Parties
- Award Dinners
- Cruises

For sale only:

- Mother of the Bride/Groom
- Bridesmaids
- Special Occasions

Overcoming hats, hand gloves,
Shoes, bags and jewellery

Open 11am - 5pm
Monday - Saturday

Out of hours by appointment:
Sue

11-13 Wymondley Lane, Wymondley, LE19 9ED
Tel: 0115 233 5111 www.sapphirebridal.com

Ivory Belle at Sapphire
Our new bridal dresses have arrived in store.
Book an appointment on line at www.ivory-belle.co.uk
or call us: 01628 530516

11-13 Wymondley Lane, Wymondley, LE19 9ED
Phone: 0115 233 5111

The Bounty Cockmarsh, Bourne End

www.thebountypub.com
Call 01628 520056 for directions

Winter:
Open weekends for drinks and food.

Summer:
Open daily from noon. Food until 8pm, drinks until 11pm

Sapphire refurb
Sapphire dress shop in Wooburn Green will be closed for a refurbishment from Monday 17 August until Tuesday 25 August inclusive.

Art at the academy

Bourne End Academy art and photography students exhibited their outstanding work at a private viewing in July.

The artwork showcased the incredible talents of the A Level and GCSE students who produced moving, thoughtful pieces and portfolios as part of their examinations.

Attendees were welcomed with champagne, and canapés created and served by GCSE Food Technology students, known as 'The Little Chefs'.



Visitors were delighted by the diversity of the art, which covered themes such as nature, love and sport, using vibrant colours and interesting techniques. *Art above* by Cheyenne Allaway, *left*, by Saleemah Manterfield.

Forum Players Proudly Presents

For One Night Only

A Theatrical Extravaganza of Sketches, Music and Dancing

Saturday 19th September 8pm

Community Centre Theatre
Wakeman Road, Bourne End

Tickets available from Bourne End Library
Or call 01628 523291 for more information

£9, £7 concessions
www.forumplayers.com

BBBICIA charity No. 200034

FORUM PLAYERS

For One Night Only is on Saturday September 19 at 8pm in the community centre and is our autumn theatrical and musical occasion for everyone. A collection of sketches, short plays, dances and songs have been put together on the funny and frustrating elements of modern-day life. As the title says - it will be for one night only. On this occasion we cannot offer a separate senior citizens night for this show but we hope you will give us your support. Tickets are £9 adults and £7 concessions through the library box office or call 01628 523291. And it is never too early to talk about panto. In 2016 we will be staging an entirely new panto written especially for us. Auditions for *Robin and the Golden Goose* take place on Monday September 21 at 8pm in the small hall at the community centre. If you've always had a hankering to get involved in amateur theatre then panto is the time to start. It is great fun. Come and audition or call the number above.

Bourne End Electrical

All your electrical needs catered for

Quick and efficient service

- Test & Certification
- New Fuse Boards
- Upgrades & Repairs
- Interior & Exterior wiring
- Outside Security Lights
- Switches & Outlets

Ring Stephen on
01628 850968
07790 546975

advancedentalservices.co.uk Bourne End 01628 525221

Tip the balance
in favour of good dental health

sugar intake effective cleaning
fluoride use

advance dental services

1 Station Court, Station Road, SL8 5YP

CPC

RELIABLE PROFESSIONAL SERVICE FOR:

- RODENTS • COCKROACHES • ANTS • FLEAS
- BED BUGS • FLY KILLER UNIT • BIRD CONTROL
- WOODLICE • GREY SQUIRREL • WASPS & BEES
- FLY CONTROL • FLY SCREENS

EMERGENCY CALL OUT

DOMESTIC & COMMERCIAL • FREE SURVEY • FULLY INSURED

01628 525025

Secondary Maths Tutor

Qualified Maths teacher in Bourne End for one to one help.

- Common Entrance
- Key Stage 3 and GCSE
- AS/A Level

T: 01628 531521
E: kath.acres@spadeoakfarm.com
www.spadeoakfarm.com/Tutors

Bourne End & Cookham Probus Club By John Daymond

At our May meeting Gordon Rogers gave a most interesting talk entitled Winston Churchill's Toyshop. This was Department M.D.1 (Ministry of Defence 1). Churchill recruited a select band of brilliant scientists, inventors and engineers who produced ingenious and highly effective secret weapons which had a direct effect on the conduct of the war.

In June at the Summer Ladies Lunch at the Grovefield House Hotel our chairman Bill Leftwich with his wife Kathleen welcomed 81 members and guests and Bill later entertained us with an amusing anecdote concerning the recent Hatton Garden jewellery heist.

Inner Wheel Club By Diana Hyde

During our annual stint with the Thames Valley Adventure Playground, we discovered that Father Christmas was in need of new clothes. President Elaine Morris acquired a wonderful new outfit to keep Santa cosy on winter nights and this was presented at our handover meeting in June. Our picture below shows president Elaine Morris, Nikki Hutchinson (TVAP) and Diana Hyde.

President Elaine bought a beautiful box of chocolates 'fit for a Queen' from the Royal Windsor Farm Shop and a special congratulatory card, which all members signed. This was posted in time for Her Majesty's 89th birthday, and we were delighted to receive an acknowledgement from the Palace.

Our last event for this 'year' was Bottle in a Bag stall at the Bourne End Fête, where we raised money for Medical Detection Dogs. Now members are looking forward to another good year.



Little Marlow & Well End WI By Judy Wilson

Like most WIs we've had a busy two months celebrating the centenary of our movement. We decorated a tree at the entrance to the recreation ground and the pillars of the veranda on the pavilion are covered in sunflowers, thanks to members of our craft group. Our lucky delegate to the garden party at Buckingham Palace shook hands with the Countess of Wessex, enjoyed delicious refreshments and visited the gardens. For her it was "a truly magical day".

Our delegate to the AGM at the Albert Hall also

experienced the coming together of women from across Wales and England, appreciating the attendance of the Queen, the Princess Royal and the Countess of Wessex.

The rest of us were more than happy to attend Cineworld in High Wycombe, where we witnessed the day's proceedings on the big screen. We then took part in a county Garden Party at Waddesdon Manor which continued the celebrations.

Pictured below are Kaye Edmondes (left) and Jenny Boas of the Bourne End WI who also attended the event at the Royal Albert Hall



Bourne End & Cookham Rotary Club By John Dunsterville

By the time you read this I will have stepped down as president of our club and hailed in Sue Pomeroy as the new one. Sue has been the head of sixth form at Bourne End Academy and along with our Mike Ware and Chris Whibley has been a leading light in just about anything to do with local schools, helping the young folks take an active role in local communities as well as Africa and India.

Rotarians not only enjoy fundraising, we have fun as well, with occasional trips out, quiz nights, music nights, barbecues and days by the river, and speakers on Tuesdays at the King's Head. They vary from a Pumpkin Carver and Morris Dancer to the Town Crier, as well as Rennie Grove Hospice and OK Our Kids to the Zambia Project. If you have a desire to put back something into the community and meet some great people, contact Robin Stevens on 01628 521542 or John Dunsterville on 01628 521112.

Cookham Bridge Rotary Club By Roger Gould

On April 27 the Rotary Club of Cookham Bridge hosted its annual charity night at Winter Hill Golf Club in Cookham. During the evening George Molyneux, the club's president, presented cheques to some of the local and national charities Cookham Bridge has supported this year. Those represented at the ceremony included Young Carers, People to Places, Age Concern and Cystic Fibrosis.

Wooburn WI By Sue Pressney

At our July meeting Robert Shaw gave an interesting talk on The Oregon Trail. Our August meeting sees our Bring and Buy with good bargains. In September Edward Dixon will tell us about the role of women on the Home Front in the First World War.

You will be welcome at any of these meetings at St Mary's Church Hall (off Wycombe Lane) on the first

Wednesday in the month at 2.15pm, except for our August meeting, which is at the home of one of our members. Contact Sue Pressney 01628 527396

Bourne End WI By Kath Acres

At our June meeting we enjoyed a talk by jeweller Christopher Walton. The sun shone on our July garden party (kindly hosted by Lorna and Andrew) when we enjoyed music from the Marlow Ukulele Band

Lip Service Theatre returned to the community centre with their Hysterical Historical Show, which proved so popular that we have already booked them for 2016 (see review page 37). The outdoor Mikron Theatre performance of Raising Agents - a comedy to celebrate the centenary of the WI - was hugely successful too.

Our next big event is a WI Centenary Tea Party with Bourne End Afternoon WI on September 15 at Bourne End Community Centre. Tickets £6 from the Community Centre, tel 01628 522604.

We meet on the first Thursday of the month (except August) in St Dunstan's Church Hall at 7.30pm and visitors are welcome (suggested donation £3.50). Our Craft and Chat Group meets on the third Tuesday in Bourne End Library at 1.30pm and all are welcome. Please email bourneendwi@yahoo.com for further information.

Bourne End Afternoon WI By Julie Wardell

In May we had the WI Annual Resolution Meeting, our discussion fuelled by cake and tea. An opportunity to socialise is where our meetings excel. Our visit to Wisley was hugely enjoyed.

For June we had a skincare expert, Laura Clifford, from Mary Kay Cosmetics with a chance to sample and purchase the products.

July saw representatives from the Lotus Centre in Bourne End visit our group and a discussion on the alternative therapies they offer. We also ran a Bring and Buy Sale. After the August break we continue in September with the author Jane Marbaix explaining and demonstrating the up-and-coming skill of Zentangle.

We meet on the second Monday of the month in St Dunstan's Church Hall at 2pm; visitors welcomed.

Glory Mills Bowls Club By John Palfreyman

It was with great sadness that the members of Glory Mill Bowls Club heard of the death of their long-time committee and club member Sid Rose. He showed fairness and inspiration especially in the post of Chairman, and was also successful in attracting new members. The club will dedicate a new trophy, the Sid Rose Bowl, which will be played for annually against a local club. Also the annual match against the Buckinghamshire Vice-Presidents (of which Sid was a dedicated member) will be run in honour of Sid.



Film club event caught on camera

Bourne End Video Makers held a very successful 50th Anniversary Film Show at the community centre in May. The full audience in the main hall was entertained with a selection of films dating from 1965, when the club was formed, to the present day.

The technology moved from initial cine filming through to the current use of high-definition video. A display of hardware was inspected by visitors, among whom were a number of former members including a founder member and his son.

The audience enjoyed a short interval when a selection of beverages and home-made cakes were served.

The club is now planning its Winter/Spring Programme which starts in September.

Meetings are held in the *Target* room at the community centre on the first and third Wednesday of the month and new members with all levels of experience are always very welcome.

Contact the honorary secretary on 01494 712441, visit the website bevm.co.uk or just turn up. There are no meetings in August.



HARTLETT
BARTLETT
TREE EXPERTS

A Complete and Comprehensive Tree Care Service since 1907

- Tree & Shrub Pruning | Planting | Tree Removal
- Woodland Management | Health & Safety Reports
- Disease & Insect Control

For a free consultation please contact your local arborist:

01494 677 889
beaconsfield@bartlettuk.com
www.bartlett.com

Get crafty now for the Autumn

Autumn seems a long way off, but plans are already being made for this year's Bourne End Junior Craft Show which takes place on Saturday October 3.

As in previous years the event is being hosted by Bourne End Library and is open to all young people in the local area aged four to 15 years-old inclusive.

The school summer holidays are the ideal time for youngsters to prepare their entries; be it photos taken on holiday, sketches or collages done on a rainy afternoon, knitting, needlework, decoupage, model making, painting or any other craft.

Classes will be split into different age groups and once again, thanks to the generous help of local supporters, prizes are on offer including the Penny Walsh Cup kindly donated by Bourne End Horticultural Society.

Full entry information will be available in September from the library and other local outlets, but in the meantime please prepare as many entries as you like. It is completely free of charge to enter and we look forward to seeing you there.

The Pentagon Clinic
Osteopathy and Physiotherapy

Stella Halpin BSc(Ost)
David Turner B.Ost.
Morag Bowie M.C.S.P.M.H.P.C.

The Annex
Bourne End Day Care Centre
Wakeman Road, Bourne End
Bucks SL8 5SX

email: info@pentagonclinic.co.uk
www.pentagonclinic.co.uk
Tel: 01628 533200

Our highly qualified and experienced Clinical Team continue to provide:
- Osteopathy
- Physiotherapy
- Sports Massage
- Pilates
We have a wealth of experience in the treatment of all conditions.
We have a range of fully accredited courses.

NEW CLASSES
KICKBOXING
And KUNG FU

JUST FOR KIDS
Young Dragons Kickboxing
Self Awareness - Fun Pad Work
Confidence - Anti Bullying

ADULTS CLASSES
Sport Kickboxing - Fighting Drills
Lau Kung Fu - Weapons
Self Defence - Pad Work

FOR DETAILS OF YOUR LOCAL CLASSES PLEASE CONTACT US ON THE FOLLOWING NUMBER:
Tel: 07860 431739

Football crazy... Football mad

These photos were taken at the Sportsfest football tournament on Wooburn Park in June and at an U8 and U10 tournament in Bourne End's twin town Octeville sur Mer, France the following week.

See the Sportfest report page 19. The BEJSC contingent to France consisted of 57 people; 25 boys, their coaches, parents and siblings.

The club's Mike Bayliss writes: "The trip was a great experience for everyone concerned from a sporting and cultural perspective, enabling us to develop our growing friendship with our wonderful French hosts.

"Both age groups played in a competition a year older than their normal level and performed incredibly well.

The U8s won a number of games against older opponents and the U10s reached the quarter finals of the U11 competition losing out to the eventual winners of the competition. The highlight for the U10s was beating Octeville sur Mer 2-0 in one of the final play off games."

Plans are already in place to return to Octeville next year. To make this possible and to ensure the future of the club, both age groups need new players for next season. If there are any young footballers that would be interested in joining contact Dan Murgatroyd (for U11s) on 07909 964887 dan.murgatroyd@gmail.com or Greg Jones (for U9s) on 07713 784387 gpj72@icloud.com.

Sportsfest photos courtesy of Ashley Lewis www.containsflashphotography.com and Hannah Jones



Left to right, Dylan Murgatroyd, Riley Emery, Harry Hawtree, Zac Bayliss, Sam Waxman and Ollie Dearman. Kneeling, Isaac Deans.

CLEANER OR CARER

- Over 10 yrs experience
 - Current CRB
 - References provided
- Phone Tina 07581435021

Alexander Jolliffe
Upholstery

Website: www.ajurc.com
Email: alex.djolliffe@gmail.com
Mobile: 0795 101 2222

Powerline
HOME SERVICES



Electrical work



Plumbing work



Contact:
Peter Druce 07748 836359

NO JOB TOO SMALL/FULLY INSURED

BASL
BUILDING &
MAINTENANCE LTD



Mathew & Paul Billinghamurst - Seventh generation builders

T: 01628 298185 w: www.BASLbuilding.co.uk e: Mathew or Paul@BASLbuilding.co.uk

We undertake any and all work to your home to a high standard and cost effectively

CHRIS GATES

Decoration & Repair Services

- *Top quality interior and exterior decorating
- * Interior carpentry, plastering, coving and tiling
- *Repair and restoration of exterior woodwork
- *Box sash window repair and refurbishment
- *All types of glazing repairs
- *Fully insured with references available on request

For advice and a free estimate

Tel: 01628 529698

Mob: 07802 457274

Bourne End

Bourne End Community Library

By Inka D'Agostino, library manager

Library activities August/September

Get ready for this year's Summer Reading Challenge. Do your children become bored over the long summer holidays? Then come to the library and join the Record Breakers Summer Reading Challenge.

Enrol, receive your pack and read six books over the holidays to win a medal.

We have also organised some super events for the children:

Craft Sessions will be on Friday August 7 from 2pm to 3.30pm, Wednesday August 19 from 10am to midday and Wednesday August 26 from 10am to midday.

We shall also be holding a **Junior Photography Workshop** on Saturday August 15 from 10am to midday. This is an ideal opportunity for the youngsters to come and pick up some valuable tips for their entries into the Bourne End Junior Craft Show, which will be held on Saturday October 3 from 9.30am to 2pm (see page 30 for more details).

For the adults please note that **Lifestyle Club** will meet on Friday August 7 from 10.30am to midday. Join us for a summer coffee morning and enjoy some cakes and a glass of Pimms.

In September we shall be welcoming back the **Wooburn Festival**. For the full programme see page 25.

Events at the library include a Photographic Exhibition Sept 28 to Oct 16 including a

photographic talk on Monday September 28 at 7.30pm when Rod Bird will talk about the Thames Landscape.

On Tuesday September 29 the guest speakers are from Dropmore Vineyard while on Wednesday September 30 Alexia Cassale will be discussing "The Anatomy of the Novel". Thursday October 1 brings the return of the Metroland Poets.

Following the success of last year's Peter and the Wolf, the festival has organised another music themed workshop, **Carnival of the Animals** on Sunday Oct 4 from 2pm to 5pm. This year bring your young children (4-8) to Bourne End Library for a fun afternoon making masks of the full cast of animals in Saint-Saen's Carnival of the Animals.

The children can keep and wear them to play along with the fabulous music. This event is intended to give young children an introduction to classical music. A wonderful team of artists and musicians will guide the children through making the masks and acting to the music.

Tickets for any Wooburn Festival event can be purchased from the library as we shall be running the festival box office.

Finally I should like to remind our customers that we have a beautiful and tranquil garden which is open to the public. With the lovely summer weather why not come to the library and use our outdoor reading room and enjoy a cup of delicious coffee served by my friendly team of staff and volunteers.

For any of the above events or to enquire about room hire please contact us on lib-boe@buckscc.gov.uk, telephone: 0845 2303232



Bourne End Community Market

A family writing for families

Next to Chocolates by The Lass in the Apron on Cate and Alexandra McDermott's stall at the Bourne End Community and Craft Market, shoppers will find an assortment of books: mystery novels, cookbooks, literary study guides, historical fiction, and princess tales.

The connection between these two sets of wares is not immediately evident. If the books were cookbooks, it might make sense for Alexandra to sell them alongside her chocolates and other treats. But most of them are not.

Take a closer look at the front covers of the novels and all becomes clear. Cate and Alexandra, plus their brother Don (the resident pianist for the community market) are the authors of these works, under their family business of The Sibling Writery.

The Sibling Writery began when Cate was only 18. Her first novel, *Bernadette: Princess Under Protest*, started as a family story, told to her younger siblings in instalments. Over several years, the story progressed into a complete and published novel, while Don and Alexandra took to writing novels of their own.

The three siblings work together in editing and publishing one another's work, but each of them writes in a distinctly individual style. Cate, besides her princess stories, writes educational study guides on the Chronicles of Narnia, in connection with her work as a Teaching Fellow with the CS Lewis Institute. Alexandra connects her various talents of culinary genius, historical research and photography in her culturally investigative cookbooks, as well as in her meticulously written family-oriented historical fiction. Don brings a comic touch to the world of modern teenagers with his delightful mystery series, *The Freestyle Five*.

The McDermott siblings style themselves as "a family writing for families." The novels and other literature are not restricted to arbitrary age groups and genres, inasmuch as they are written to a high literary standard with a realistic approach that will appeal to readers of varying tastes and backgrounds—particularly those with desires to become writers themselves someday.

So come to the market, between 10am and 1pm on the second Saturday of every month, and take a look at what The Sibling Writery has to offer—the sign on the stall says 'Please Touch!'

If you would like more information about the Bourne End Community and Craft Market, or represent a new or less well-known local charity or community group who would like to be featured as our Charity of the Month in our Charity Tombola, call Rosie O'Hagan at 07989 716635 or email rosieohagan@me.com.

COME AND VISIT OUR BRAND NEW STORE



TEAMWEAR SPORTSWEAR SCHOOL UNIFORM

Tel: 01628 819242 www.hawkinsport.co.uk

Unit 10a Wessex Road Industrial Estate,
Bourne End, Bucks, SL8 5DT



JG dance
Joanne Grenville Dance Academies
& Theatre College

2½ - 18 years, Girls & Boys
Beginner classes in Ballet,
Jazz, Tap & Acrobatics
FREE TRIAL LESSON

RAD, ISTD & LAMDA
Classes up to Advanced 2
Twice Yearly
Theatre Performances

Call: 01491 572000 email: info@jgdance.co.uk

BOURNE END - Wednesdays after School WWW.JGDANCE.CO.UK

**QUALIFIED
CARPENTER/HANDYMAN**



- 25 years experience
- Reliable and friendly service
- All types of carpentry including:
 - Fitted kitchens
 - Doors, skirting & architraves
 - Flooring
 - Fitted wardrobes
 - General handyman/maintenance work

For a free & competitive quote call
Paul on 07857 074523 or 01628 523314

C.O.D.GROUNDWORKS
Specialists in all
types of Groundwork

- * Paving
- * Patios
- * Fencing
- * Block Paving
- * Drainage
- * Driveways
- * Patio Cleaning
- * Concreting

NO JOB TOO SMALL
FREE ESTIMATES
Tel: 01628 528637
Mobile: 07778 371552

ALL THE LATEST NEWS ON
www.bourneendbucks.com

LOG ON NOW!

Painter & Decorator
N. W. Upward

2 Fisherman's Way
Bourne End
All wall coverings hung
Glazing & Wall Tiling
Estimates Free
01628 528921

YOGA WITH LINDA

Monday morning, Tuesday evening
and Wednesday lunchtime
Bourne End
Ring: Linda Jolliffe 01628 521510

HOMEOPATHY
Qualified Homeopath
Sheila Carter
01628 526873

Stacey

**Home Visiting
Foot Health
Practitioner**

A new Foot Health service
available in your area



Services provided -

- *First consultation Free*
- *Routine nail care*
- *Hard skin, Corn and Callus*
- *Verrucae treatment*
- *Ingrowing toe nails*
- *Fungal nail treatment*
- *Elderly care home visits*
- *Home Visits*
- *Local, Professional, Friendly Service*

**For further information or to
book an appointment please
contact Elizabeth Stacey on**

07817 873592

or email - lizstacey70@gmail.com

Elizabeth Stacey MCFHP/MAFHP

ALLAN WISE & CO
ROOFING SPECIALIST

Complete Roofs or Repairs
Large or small jobs
Estimates FREE
01628 525740

MANKIND
MENS HAIRDRESSING

Tel: 01628 528974

15 The Parade
Bourne End
Bucks
SL8 5SA



R S HALL UPHOLSTERY

31 years experience

ALL UPHOLSTERY WORK UNDERTAKEN

- * Re-upholstery
- * Sofas & Chairs
- * Loose Covers
- * Antiques
- * Pubs & Clubs
- * Schools
- * Hospitals
- * Office Chairs

Large
Contracts
Over 300
fabrics
available
Free
estimates

Also fabrics at competitive prices,
upholstery sundries and all
sizes of foam

Contact Bob: 07809 140988
T: 01494 461481

E: contact@rshallupholstery.co.uk
www.rshallupholstery.co.uk

**MAINTENANCE &
LANDSCAPING**

Property Maintenance, Professional
Landscaping, Fencing,
Specialist Patios,
Paving, Tree Surgery, Etc.

DAVID J KIMBER, 01628 810361 07850 124241

Past times... edited by Barrie Penfold

SUE SPRINGALL DIGS INTO THE HISTORY OF BOURNE END'S ROYALTY CINEMA

How many younger residents know that in the Golden Age of Hollywood, Bourne End boasted its own cinema in the Art Deco style? The Royalty Theatre (so-called owing to its stage for live performances) opened on New Year's Day 1934 - the builders worked through the night to ensure it was ready on time. It was the cornerstone of a new parade of shops, including Donald the sweetshop next door, where cinema-goers would stock-up with confectionery. It was the last purpose-built cinema to open in Bucks, although films had been shown in the Abbotsbrook Hall from at least 1920 (the operating box having been constructed outside the building for safety reasons).

The opening ceremony was performed by Lieut Col W B Dupre JP, of Wilton Park. First films on screen were *I Adore You* starring Margot Graham and *Ex Lady* with Bette Davis. In its first year the cinema was reported by the Lord's Day Observance Society for including a film in an advertised Sunday programme.

Designed by architects Alfred and Vincent Burr, the Royalty was an unpretentious cinema, with a raked auditorium seating 600 and a screen which was the 'largest telescopic size available'. The walls were just whitewashed bricks, so it was draughty and very basic by modern standards. The small stage was used periodically by military bands and artistes until at least the end of the Second World War.

The cinema enjoyed its best years during these tumultuous times, when the blackout restricted movement and a large army camp stationed at Wooburn Green needed entertaining.

Gilbert Church took over as owner in 1937 and continued into the fifties. He not only owned the Royalty, but he also had a film renting business in Wardour Street and his own film company. George Warner was the smartly dressed manager for many years and the remaining staff wore uniforms.

In the days before television, the cinema represented an escape from the harsh realities of life for many working class audiences. High Wycombe had four cinemas, into which 24,000 people filed each week in 1951. Saturday matinées for children became a national institution and many Bourne End people remember seeing their first film at the Royalty (the cowboy films being



particularly memorable). Cookham residents had an added inducement to cross the toll bridge, their shilling fee being refunded on production of a toll ticket at the box office.

The first few rows cost 9d and you would have to pay 1/6d to sit further back. During the dreadful flood of 1947, when the snow melted on the fields behind what is now the Community Centre (creating another tributary into the River Thames), the first few rows were underwater and had to be cordoned off. However the show went on!

Some people have fond memories of visiting the Royalty. David Birch saw *Bambi* and *Snow White* (and later the notorious *Lady Chatterley's Lover*) there. If the local youngsters wanted to see a certificate A film, they would loiter outside until they could ask an adult to chaperone them in (and, if lucky, the obliging grown-up might buy them an ice-cream). Young scallywags would pay for a ticket, then let their mates in through the fire doors. They would trick the hapless usherette, Mrs Herbert, by surreptitiously circulating a couple of tickets around the group.

There would be a dash for the seats next to the radiators in the winter and as the establishment deteriorated in the fifties, people would occasionally sit down in the dark on a seat with no back or even fall to the floor where a seat had been removed!

Another resident remembers being taken to the Royalty to see *Rock Around the Clock* with Bill Hayley (the film credited with bringing rock n' roll to Britain). Her indomitable mother poked one of a group of high-spirited Teddy Boys in the back with her umbrella, admonishing him to 'Stop mucking about!' (whereupon he and his mates slunk down in their seats and remained quiet for the rest of the show).

Alas, the 50s saw a rapid decline in the popularity of cinemas, since they could not compete with television. The Royalty soldiered on until December 14 1957, when Gilbert Church closed it down after showing *The King and I*. After some redecorating and general repairs, it reopened briefly; but the management couldn't meet the rising costs and its final closure took place on May 30, 1959. The last film was the western *Jesse James*.

The Royalty was converted into a furniture shop in 1962 and for many years it has been a carpet shop. The canopy and neon tubing have gone but the shell of the auditorium and projection port can still be seen from the upstairs office of this shop.

Source material: 'Memories of Buckinghamshire's Picture Palaces' by Martin Tapsell. Grateful thanks to members of the Old Claytons group and Bourne End Past and Present facebook page. Also to Ken Townsend for checking my copy.



Smartly dressed staff in 1934

OUR LOCAL CHURCHES KEEP IN TOUCH

St Mark's Parish Church

Our regular Sunday Holy Communion is from 10.30am to 11.30am with activities for children. Pathway is on the second Sunday of the month, a 45-minute all-age service with kids' songs and hymns at 10.30am.

Discipleship courses run all year and give us a chance to deepen our understanding as part of our faith journey.

The Pilgrim course is held in church on Thursdays at 10.45am and the Emmaus course is the same day at 7.45pm at 35 Blind Lane. All are welcome.

In the church hall, drop in to the Monday Cafe from 10am. Puppet Theatre Club for ages eight-plus is Tuesdays at 5pm. Puffins group for mothers and toddlers meets on Wednesdays, 10am to 11.30am.

To improve everyone's access to the church and hall, a new car park will soon be built, so watch this space (see article on page 7).

For further information contact the Rev Janet Binns 01628 523046 or the Administrator Alison Gray on 01628 298022.



St Nicholas' Church

During the summer we are open on Sunday afternoons between 2.30pm and 4.30pm. Do come along to see the church and the view and to be inspired.

Our regular service is at 9am on Sundays. The second Sunday each month is a Family Service and the others are a service of Holy Communion. The fourth Sunday is with our choir and on that day the children meet in the vestry.

On Friday September 4 we have a talk in the church on the paper mills that were in the area; ring 01628 530181 to book a place.



The Community Church

A big thank you to everyone who visited the Community Church tea tent at the Wooburn Fete in June. In addition to devouring a large quantity of scones, cream and cakes, you helped us raise £300 for the One Can Trust – our local food bank and a very worthy cause.

Our Sunday morning services on the first four Sundays in August are all at the chapel, so how about taking a nice morning stroll across Wooburn Green and joining us at 10am for refreshments ahead of a 10.30am start. We're not holding a service on August 30, and then we're back at The Meadows School from September 6.

Our Little Steps baby and toddler group normally closes for the holidays but this summer will run on two Thursdays, August 13 and 20, 10am to 11.30am.

We're extending the age range to include younger primary school children and there will be activities that they will enjoy. You're welcome to come whether you're a regular Little Steps

attendee or not – we just ask that you book a place by emailing Jo Maynard in advance: joanne.maynard2@btinternet.com.

The normal term-time Little Steps re-starts on Thursday September 3, 10am to 11.30am. It's a great way to meet other mums and give your child some fun and contact with other children. It costs just £1 per family.

Our Dads Little Steps baby and toddler group is continuing over the summer, so if you'd like to meet up with other dads, the dates to put in your diary are August 1, September 5 and October 3. It runs from 10am to 11.30am, bacon butties and banter guaranteed. If you like the sound of bacon and banter, but don't have a baby or toddler around, then you can go for the 'Full English' option at our men's breakfast which is 8am to 9.30am on August 8 and September 12, cost just £3.



St Paul's Church and St Mary's Church Wooburn

Our Open Church at St Paul's continues throughout the summer from 3pm to 5pm every Sunday until September 6. Do join us for tea/coffee and cakes, and take the opportunity to look around our beautiful church.

We are holding a Band and Beer evening on Saturday September 19 and a Quiz Night on Saturday October 3, see details on our website.

We are hoping that the district council's initiative Theatre in the Villages is returning to St Paul's Church Hall for its fifth year at the beginning of November.

Tickets will go on sale in September.

Our Friday midday Communion service and lunch will start again at the beginning of September, as will Tots Praise on Fridays in St Paul's Church Hall at 9.45am.

The church hall and garden in Town Lane, Wooburn are available for bookings; tel 01628 525512, email stpaulswooburnparishoffice@gmail.com, visit www.stpaulswooburn.org, which has details of all services and events.



St Dunstan's Church

The First Holy Communion and Confirmation Masses were very joyful occasions and we congratulate our young people who received these sacraments. It was also a pleasure to welcome Bishop Peter Doyle from Northampton.

Many of us were treated to an evening of fine music at St Teresa's Church when Carl Bahoshy gave a splendid organ recital in aid of the ICIN charity (Iraqi Christians in Need). The event was organised by the South Bucks Catenians.

We also helped raise over £12,000 for the Leonard Cheshire Children's Home in Mongu, Zambia, by going along to St Teresa's Summer Fayre at the end of June.

Our new local CAFOD group is busy planning future fundraising events. The next monthly Saturday morning charity sale at St Dunstan's

will be on August 1 from 10am to midday.

In September we say goodbye temporarily to our Parish Priest, Fr Francis Higgins, as he will be taking a year's sabbatical to study at the Catholic University of Leuven in Belgium. We wish him every success and look forward to his return. In his absence we shall be looked after by Fr Henry Sanni from Nigeria. We extend a very warm welcome to him and hope he will be very happy with us.



Cores End United Reformed Church

Our Minister, Terry Hinks, and his wife Elizabeth are now happily installed in the Manse at Cores End. Contact details are Revd Terry Hinks, The Manse, Princes Road, Bourne End, tel: 01628 525076, email minister.trinity.coresend@gmail.com.

Terry has settled in very quickly and we confidently look forward to the future together.

On Sunday September 6 we are planning a walk (or drive for the less able-bodied) from Trinity, Wycombe to Cores End, followed by afternoon tea. Everyone is very welcome.

Our children's Fun Day for ages five to 11 is on August 15, followed by a barbecue after the service. Places are limited but if you haven't already booked in your child contact Ann Pendergast on 01628 526865.



Link Up Club visited World's End Garden Centre in Wendover for their last outing before the summer break and return for a full autumn programme on September 8.

An exciting new venture is taking place on the church premises. Freedom Wheelchair Skills provides peer-led training for anyone who needs to use a manual wheelchair. Stuart Wheeler has many years' experience of getting the most out of life while using a wheelchair and his training sessions are designed to help people become more confident in using a wheelchair and less dependent on others, and show how to overcome everyday environmental challenges. To find out more visit www.freedomwheelchairskills.co.uk.

Stuart has been involved in Cores End Church since he was a baby in our crèche, then in Junior Church, and now he and his wife, Ali, regularly bring their son Jacob, continuing his long association with us all.

St John the Baptist, Little Marlow

Following a lovely evening at Music in the Manor we are now preparing for our stall at the Little Marlow Village Fete on August 31 starting at 2pm. There will be a selection of jams, marmalades and preserves and also great attic finds.

The church is open on Sundays from 2.30pm to 4.30pm. All information at www.4u-team.org.



COMMUNITY CENTRE



centreTalks

Dave Foster

Starting Family History

This practical example, using Dave's own family research, shows how you can piece together the jigsaw that is your family history.

Who is in your Family Tree?



How to start researching your Family History

Bourne End Community Centre
19:45 on Thursday 10th September

£5 (£4 for Ass'n members) on the door or £4 (£3 for members) in advance from the Centre Office or the Centre Bar
www.bourneendbucks.com/centreTalks
A fund raising activity for B.E.(B).C.A.

message with the community centre office.

centreTalks take place on the second Thursday of the month at the community centre starting at 19.45pm.

All are welcome, tickets can be purchased in advance from the centre office or from the bar or you are welcome to just turn up on the night.

A discount is available for community association members and also for purchasing tickets in advance.

Dave Foster

Vice Chair Bourne End (Bucks) Community Association

Chess

This is the time of year when chess players can think about the coming season. Two books that could be recommended are by grandmaster, John Nunn. *Learn Chess Tactics* has many exercises of varying degrees of difficulty to improve your understanding of how to win games and *Secrets of Practical Chess* explains how to make the most of your talents.

The club meets on August 5 and weekly meetings resume on September 2 initially for friendly games before competitive matches start at the end of the month. Contact Roger on 01628 486676 for more details.

Darts

Because of the larger than usual entry for the Wooburn Summer League and the restricted time in which to complete all the matches, it has been decided this year to run two leagues with the winners of each league playing off to decide the overall winner.

The community centre has entered two teams, one playing in League 1 and the other in League 2. At the time of writing only the first three rounds have played and our fortunes are mixed. Team A, made up of the old time stalwarts, got off to a shaky start and are in mid table in League 2. Team B, the new team, got off to a flying start and are well ahead in League 1. Five games in each league remain to be played before the play-off final. By the luck of the draw, or perhaps the deviousness of the controller, Team A are playing all of their first four games at home and the remaining four away. Team B are the opposite so never meet.

Summer darts is more leisurely than winter darts and is more for camaraderie and for keeping the "arm" in good shape.

It is also, as last year, to support the Air Ambulance Association.

Bourne End Anglers News from the waters edge

The new season is upon us again. The club visited the old favourite West End Pool on Sunday June 21 for the first match of the season. The weather was fine and warm and the venue looked great with an abundance of water plants and lilies in full bloom.

The fishing was only fair as the carp were still more interested in each other, rather than the fisherman's bait. We hope that they have worked up an appetite before our next visit. The top three anglers weighed in 44lb 8oz, 38lb 8oz and 11lb 8oz, of mainly carp.

The club visited Oakfield Fishery near Aylesbury in July to target the still water barbel, bream and tench that this venue is renowned for.

Phone Terry Belcher on 07836 767452 to join our small group of male and female anglers.

Bourne End Concert Orchestra

Farewell

Soprano Solo
Arias by P...

Orchestral items by Delibes

Sunday 4 October
7.45pm in the Community Centre

Tickets £10 for
Bourne End
or Telephone: 01628 522600

Sponsored by

TICKET ORDER FORM
Bourne End Concert Orchestra
Sunday 4 October 2015
7.45 in the Community Centre

Name: _____

Address: _____

Tel: _____

email: _____

No of Tickets: £10 each

Total Cost: _____

Cheques payable to "BE(B)CA"

Post completed form with cheque in a addressed envelope to:
Mrs J Timewell
27 Willow Close, Flackwell Heath,
Telephone: 01628 522600

centreTalks - Talks @ the Centre!

When we held "An Evening with John Dunsterville" in November last year little did we realise that over the coming months the talks would build up a core audience.

Since January this year we have held talks, which have become known as centreTalks, covering such diverse subjects as *The Vanishing Pubs of Bourne End and Wooburn*, *Making Limited Edition Chairs*, *The Auctioneer's Lot*, *Magic and the Magic Circle*, *Air Traffic Control*, *Who Do You Think You Are*, and *Codes and Cryptography - from Caesar to the Enigma*. Rather than being like lectures, the evenings have quite an informal atmosphere with people sitting round tables and with ample opportunity to ask questions.

The variety continues in September with *How to Start Researching Your Family History* when David Foster takes us through the key records used in family history research. Using examples from his own family and research he builds a family tree using censuses, parish registers, birth, marriage and death certificates, newspapers, wills and monumental inscriptions.

This practical example shows how you can piece together the jigsaw that is your family history. This talk should help you if you want to know how to start your family history, have recently started your research or just want to make sure you have not missed out on how to use any of the basic building blocks.

This talk will be followed up with a practical hands-on session for beginners the following week. Details of the follow up session will be available at the talk on Thursday Sept 10.

September will be followed by a wine tasting evening and one final talk to round off the year, details for both will be in the October Target.

We are starting to book speakers for 2016 and if you have any suggestions of a good speaker or a subject you think would be suitable please email us at centreTalks@bebca.org.uk or leave a

For membership cost information on joining Bourne End (Bucks) Community Association enquire at the centre office or call 01628 522600

Local Community Association

Band Concert

Orchestra

30th and

50th Anniversary Concert

Soloist: Lori Lynn
Muccini and Lehár
Elgar, Debussy and Strauss

October 2015

Community Centre, Bourne End

by Alexander Prior

Bourne End (Wucks) Community Association
Presents ... Live Music from

THE ROCKING SIXTY'S

SATURDAY AUGUST 15th 2015
8pm

At Bourne End Community Centre
In the Small Hall * Light Buffet provided
£5 per person

Tickets from Centre Office (01628) 522604 or
Laura Manning (07834) 971133 laura_manning@outlook.com
Bourne End Community Centre Wakeman Road SLR 55X



L to R: Sue, Kath Acres and Maggie

Hysterical and historical

Review by Debra Aspinall

It would be the stuff of nightmares for most of us; standing up on a stage, with nothing but a box of ropey props, and expected to make people laugh for nearly two hours! But for Maggie Fox and Sue Ryding it's just all in a day's work.

This brilliant duo returned to the community centre in June with their Hysterical Historical Show, at the invite of the local WI. Those who were lucky enough to see their Inspector Norse show last year are still talking about how achingly funny it was and this follow-up show hit the same heights.

These talented ladies have been writing and performing together since 1985. They have written 18 original comedies for the stage, have had their own comedy series on BBC Radio 4, made many appearances on TV and won several awards. Their LipService company (www.lipservicetheatre.co.uk) is one of the most firmly established touring companies in the UK.

This particular show was developed at the behest of Flixton WI after LipService created a comedy historical tour of Manchester. It took us on an amusing journey, meeting key historical characters, with the women portraying an array of colourful ladies (and a couple of men) with wit and warmth. There was novelist Elizabeth Gaskell attempting to put down Charlotte Bronte, Marie Stopes and her curious sex life, we attended a rally with the radical Pankhursts, met Georgian housekeeper Elizabeth Raffald (inventor of the first cuppa soup) and more. My favourite was their hard-hitting documentary on Beatrix Potter's latch-key bunnies brought up in an underprivileged one-parent family after the murder of their father entitled "Who framed Peter Rabbit." We finished with a gritty Lancashire kitchen sink drama where Maggie's rock-n-roll quiff took centre stage.

We all laughed and we all learned some golden nuggets of information (we were also tested with a not-too-serious quiz as the show went along). Maggie has a face and a voice for comedy... a mere look was all it took to raise a laugh. Sue brings physicality and, when called for, sophistication to the partnership although she is more than a match for Maggie playing the down-trodden characters from oop north.

They both have perfect comic timing, an innate sense of what their audience wants, a natural ability to adlib (or appear as though they are adlibbing) and a fab array of wigs and hats. Well done to all concerned, and the WI's Kath Acres in particular, for a great evening.

Target Quiz



Number 87

Fill in your answers to this quiz set by Penny Walsh, and hand in the form at the community centre (along with your £1 entry fee) for a chance of winning Penny's special mystery prize. All money raised will go to the centre. This quiz will test your general knowledge.

- 1 What is a yaffle?
- 2 Where is Durdle Dor?
- 3 How many inches in a 'hand'?
- 4 What is a Belted Galloway?
- 5 Name channel between Wales and Anglesey?
- 6 Where would you find the Plimsoll Line?
- 7 Who wrote Poldark?
- 8 How long is Hadrian's Wall?
- 9 What is a Fallabella?
- 10 Another name for Cornwall?
- 11 What are Assam, Pekoe & Darjeeling?
- 12 What is Postman Pat's cat called?
- 13 What does the RHS stand for?
- 14 How many yards in a mile?
- 15 Name the river dividing Devon & Cornwall?
- 16 What is scrimshaw?
- 17 What is the next number 4,9,16,25,36,49..?
- 18 What does PVC stand for?
- 19 What does WRVS stand for?
- 20 How many degrees in a right angle?

The closing date is Friday September 4

Name:.....

Address:.....

.....

Tel:.....

ANSWERS TO QUIZ No 86

- 1 Her 2 Herm 3 Heron 4 Hermit
- 5 Hereford 6 Herpetology 7 Herring
- 8 Herdwick 9 Herb 10 Hercules
- 11 Heroin 12 Heraldry 13 Herbivore
- 14 Herd or Herding 15 Heritage 16 Hertz
- 17 Hermetic 18 Herod 19 Hermes
- 20 Hero. The quiz winner was: Gill Burston, Burnham Close, Bourne End

OUR GROUP MEMBERS KEEP IN TOUCH



1st Wooburn Scout Troop

After a busy early summer preparing games for the Wooburn Fete, in June we entered three patrols into the annual Marlow District Camp Cook competition, and not for the first time we were the only troop participating in the event near Hambleden. The Scouts were judged on menu planning, food prep, teamwork, kitchen area, tent, gadgets, hygiene, timing, tastiness and cooked an evening meal and breakfast over an open fire.

The whole competition was really tight, and the winner was the pictured patrol from the 1st Wooburn Scout Troop (Jules, Katie, Reece, Jude, Pippa and Liam).

Twinning Association

The brains of Bourne End gathered on June 20 for the twinning association's annual quiz. Did you know that the Berwick cockle is a mint sweet? A ploughman's supper was followed by Estelle's legendary desserts. 'The Magnificent Seven plus One' team won.

Other events included a display in the library for Bastille Day (July 14) and our annual tea party. Plans are now being made for next year's visit from by friends from Octeville-sur-mer.

For more about our friendly group, visit www.bebta.ukgo.com or ring 01628 521748.

RNLI

Our collectors were at the M40 Services on June 5 and 6 and collected a total of £1509.35. Thanks to all our collectors and supporters.

Summer collections will take place on August 21 and 22 at Waitrose, Beaconsfield; September 11 and 12 at M40 Services; October 2 and 3 at Sainsbury in Beaconsfield; December 11 and 12 at Tesco Loudwater.

Special thanks to Steve Gill, who ran 50 - yes 50 - marathons in 50 weeks and raised £500 for the RNLI.

Wooburn Park Tennis Club

The new clubhouse is now fully in use and summer matches continue, both junior and senior. For details visit www.wpltc.org.uk or email wpltc@sky.com. For enquiries on coaching email mandj77@btinternet.com for juniors and james.sherwood3@btinternet.com for adults.

Marlow Maidenhead Passenger Association

A proposal has been made by FGW to reinstate the former Bourne End Station junction track layout during their four-year franchise tenure. This will allow trains to pass

at Bourne End and make a half hour interval service on the branch possible. It is however dependent on suitable financing and MMPA is monitoring developments.

Chiltern Railways have manufactured a

splendid wood and glass notice board incorporating the MMPA logo and association name. It has been installed in the down (south side) Platform Booking Hall and will contain MMPA newsletters and other local information.

High Wycombe Station is extending platforms to cater for longer trains and installing a new footbridge with lift access. This involves the closure of the subway between the main platforms and installation of a temporary footbridge.

During recent construction work a rail crane struck the footbridge at Taplow Station resulting in the closure of the section from Platforms 2/3 to Platform 1 and the south car park. A shuttle bus was put in operation and a temporary footbridge constructed. It is not clear yet how the access by the footbridges will be arranged and when the existing bridge, built in 1884, will be repaired or overhauled.

In early July, through services from Marlow and Bourne End to main line destinations were suspended during the afternoon on the grounds that the 'high' temperatures risked buckling of the track.

Future of Our Village (FoOV)

Steve Underwood of Transport for Buckinghamshire told our last meeting that certain trees on The Parade had created difficulties for pedestrians particularly those with prams. The roots had been cut and the blocks have been re-laid, but this was only a temporary solution and the county council had only a limited budget for such work. Lee Turner was again going to be involved in Speedwatch. Zeebrite beacons were already promised for Clayton's but a request for warning lights on Marlow Road to give advance notice of the school was not granted at present. Members of the Slate Meadow Liaison Group were attending a meeting that night relating to education which suggested fairly low numbers would go to Clayton's. David Davis and Brian Pollock were formally co-opted onto the group.

Bourne End Townswomen's Guild

After our August break, on Wednesday September 9 at 1.30pm in the small hall at the

community centre we welcome Mike Hyde to talk about the Woodland Trust. Visitors are welcome to attend our meeting. For more information ring Cynthia Houchin on 01628 527931.

Bucks Family History Society

We meet on the second Tuesday in the month at 7.30pm in the small hall at the community centre. On August 11 Malcolm Austin will tell us about the history of the UK and Ireland Genealogical Information Service, GENUKI, and guide the novice through what is available and how it is organised.

On Tuesday September 8 we welcome Eric Probert who will talk about Business Records for Family History and the information we can find on our ancestors in the records of companies and businesses, and then where these surviving records may be located. Examples will include availability on the internet, in libraries and archives.

Visitors are welcome in return for a contribution. See www.bucksfhs.org.uk.



Bourne End Flower Arrangement Society

Elsewhere in Target you will read all about our fundraising tea party for Bourne End Day Care Centre. It was a lovely afternoon and thoroughly enjoyed by everyone.

We will be moving outdoors in August and then on Tuesday September 1 we welcome Bridget Warrington who will demonstrate on the theme of Whatever the Season.

Meetings are held in the main hall at the community centre at 8pm on the first Tuesday in the month. It is always a wonderful evening. Visitors pay £5 and are very welcome. For information contact Thelma Robinson on 01628 524689 or Liz Pay on 01628 476641.

Bourne End Horticultural Society

On Thursday August 20 Graham Talbot will speak on Flowers to Grow for Cutting. On September 17 Liz Glasser from Waterperry Gardens will talk on Plants with Autumn Interest.

Our garden visits include a trip to The National Arboretum Alrewas near Lichfield on August 1 and our annual outing to RHS Wisley on Sunday September 13. For tickets contact Margaret Marshall on 01628 523987 or Chris Baker on 01628 525601.

To find out more about our friendly society contact Penny Hampson on 01628 521482.

Soroptomists International Thames Valley

We have had a friendship link with Soroptomists Val Brabant (SIVB) near Waterloo in Belgium and we were delighted to join them to celebrate their 20th anniversary, timed to coincide with the commemoration of the famous battle. We had the most wonderful time, courtesy of our hosts, with great food, beautiful wine and being VIP guests at the battle re-enactment. We returned on Eurostar feeling

how lucky we are to belong to such a great organisation. Find out more at <http://sigbi.org>. Oh and by the way, Wellington won again!

Our picture shows left to right: Steve Saunders, Rosemary Saunders, Jill Hackett, John Hills and Ellen Hills



Wye Valley Volunteers

June was a sad month for us as we lost three long-time supporters within a week.

Sid Rose had been a volunteer driver for nearly 20 years and was a favourite of the volunteer team as he was always prepared to 'go the extra mile' and was as kindly to volunteers as he was to his clients. Our condolences go to Lillian, his widow, from whom he was rarely parted.

Bill Vanryne was known locally for being an accomplished musician and was also very involved in the community. For many years he drove the (original) community minibus, transporting elderly clients to the Sunday club teas at Alfred Court. He leaves behind Pat who is still on the books as a volunteer, well known for her delicious cakes and mince pies.

Finally Jean Jones was only a week away from her 101st birthday when she died. Jean attended the Luncheon Club and coffee mornings in the ten years that she lived in this area and was an inspiration to us all in her positive attitude to life. Only last September she was the guest of honour, with her daughter Jan and great granddaughter, at the launch of the new community minibus. She inaugurated the tail lift, though she pointed out that she had no need of such assistance!

These three people had very good, long and full lives and contributed greatly to the wellbeing of others but they will be much missed by their nearest and dearest and our thoughts go out to them.

To learn more about our services (transport to medical appointments, home visiting or social events), contact us on 01628 521027 or call at the Community Volunteer Office (portakabin to the right of the Community Centre). And do contact us if you would be interested in volunteering.

CALENDAR OF VILLAGE EVENTS

AUGUST

- 1 Sat Lace Craft Day at the community centre 10am to 4pm. Just turn up £3.50. Bring your lace and embroidery projects and chat while you create.
- 4 Tues CentreJazz: live music from 8pm in the Community Centre bar. Admission £5 includes raffle.
- 6 Thur Community Centre Bar Quiz starts at 8.30 pm, It's a £1 per person, and the winning team gets the quiz takings from the night.
- 7 Fri Bingo in the community centre. The fun starts at 2pm.
- 8 Sat Bourne End Community Market 10am – 1pm in the Library.
- 14 Fri Bingo in the community centre. The fun starts at 2pm.
- 15 Sat Cores End United Reformed Church childrens' fun day for ages five to 11, followed by a barbecue. Places limited. Book with Ann Pendergast on 01628 526865.
- 15 Sat The Rocking Sixty's live music from 8pm. See poster page 37.
- 21 Fri Charity Dance and American Supper with Barbara and David at 8pm. Good dancing in friendly company.
- 21 Fri Bingo in the community centre. The fun starts at 2pm.
- 28 Fri Bingo in the community centre. The fun starts at 2pm.
- 31 Mon Little Marlow Village Fête from 2pm to 5pm. See page 14 for details.

SEPTEMBER

- 1 Tues CentreJazz: live music from 8pm in the Community Centre bar. Admission £5 includes raffle.
- 3 Thur Community Centre Bar Quiz starts at 8.30 pm, It's a £1 per person, and the winning team gets the quiz takings from the night.
- 4 Fri Bingo in the community centre. The fun starts at 2pm.
- 6 Sun Magpie's Nest antiques fair 9.30am to 3.30pm.
- 5 Sat Cookham Regatta on Cookham Moor from 10am (official opening 11am). An opportunity for friends and families to enter a variety of boat races and challenges, or just wander among the stalls, or relax with a picnic on the river bank. For more details go to www.cookhamregatta.org.uk
- 10 Thur centreTalks at the community centre presents Dave Foster on Starting Family History. See details page 36.
- 11 Fri Social dance with Barbara and David at 8pm. Good dancing in friendly company.
- 11 Fri Bingo in the community centre. The fun starts at 2pm.
- 12 Sat Bourne End Community Market 10am – 1pm in the Library.
- 18 Fri Bingo in the community centre. The fun starts at 2pm.
- 19 Sat St Mark's monthly market in the church hall from 10am to 12 noon with coffee and cakes.
- 19 Sat Forum Theatre present For One Night Only. See page 28 for full details.
- 25 Fri Bingo in the community centre. The fun starts at 2pm.
- 27 Sun Table top sale at the centre 9.30am to 11.30am. Call Caroline on 01628 485642 to take part.

The next issue of Target will cover October and November 2015.

Email editor@targetmagazine.org.uk by Tuesday September 1 to get your event included in the calendar. The magazine will be published on Friday September 25

SEPTEMBER EVENT FOR HISTORIANS

Local historians shouldn't miss the Buckinghamshire Local History Network's 2015 Annual Conference at The Oculus in Aylesbury Vale District Council Offices on Saturday September 26. The theme will be Buckinghamshire Towns and Abbotsbrook will be featured in one of the talks. The first talk is at 10am and the conference finishes around 4.15pm.

Dr David Thorpe will talk about Subtopia and other suburban development in Buckinghamshire before Metroland, 1840-1914. Subtopia was another name for Abbotsbrook and it described suburban development that encroaches on rural areas yet appears to offer the attractions of country life to suburban dwellers. Local history enthusiasts will know that Metroland was the name given to suburban areas that were developed to the north west of London – along the line of the Metropolitan Railway. Tickets have to be pre-booked and are £15 without lunch (full-time students under 25 free), £20 with lunch. To book your place go to www.bucksas.org.uk/blhn.html and download their booking form.

Please call into the centre and pay for your copy of Target

THEN & NOW...



THEN

The very early, poor quality, picture of Cores End Road from 1903 shows George White's general store and beer shop. Move forward a decade or so and it has become The Heart in Hand public house with the baker's horse and cart outside. Further along is the Prince of Wales public house which belonged to the Stag Brewery of Wooburn Town. These two pubs were opposite the entrance to Princes Mill, where paper and millboard were produced, and no doubt provided refreshment for thirsty mill workers before they walked or cycled home.

NOW

Among all the traditional pub names The Heart in Hand is one of the more unusual. Landlords over the years added the design of two right hands holding a heart to the sign as this was an ancient symbol of friendliness and agreement. Like so many pubs The Heart in Hand suffered and tried different ways to attract more trade. Sadly the pub name went as part of rebranding.

Eventually the pub closed and planning applications followed resulting in this house being offered for sale on part of the building. Thankfully the sign post and frame is still there (just out of shot).



Send your Then & Now photos and captions to editor@targetmagazine.org.uk

FULL STEAM AHEAD LAUNDRY SERVICES

Washing & Ironing of all household and commercial items undertaken. We wash football kits too!

All laundry is treated to suit personal requirements with excellent standards of hand ironing in a guaranteed non-smoking environment. With same day, 24-hour and 48-hour quality services to choose from. *See website for more details!*



FREE
COLLECTION & DELIVERY



CALL NOW ON 01494 482474
OR EMAIL FULLSTEAMAHEADLAUNDRY@GMAIL.COM

📍 [fsalaundry](#) 📍 [FullSteamAheadLaundry](#)

20% OFF

Please quote code FSA347654 or hand in this coupon upon collection of laundry to qualify.

WWW.FULLSTEAMAHEADIRONING.CO.UK

WE NOW UNDERTAKE DRY CLEANING AND LAUNDRING OF KING-SIZE GUYETS!