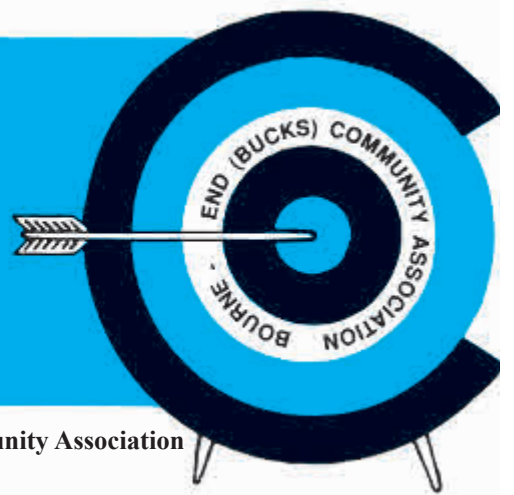


# target



VOL. 51 No1  
FEB/MAR 2015 £1 *Suggested price*

The Journal of Bourne End (Bucks) Community Association

## KEEP CALM AND CONTINUE SUPPORTING TARGET

Come hail, snow or sunshine *Target* magazine drops through your letter box every two months thanks to our willing band of volunteer distributors. But rising production costs mean that we now have to take the unusual step of increasing the cover charge to £1 to keep this service going.

Many readers may now be thinking: "I didn't know there was a cover charge." Others may be casting their minds back the 20 or so years ago when we introduced the 50p price.

Whichever group you belong to we would like to request that you take a minute to consider supporting this community magazine. At £1 an issue that is £6 a year to keep up to date with local news, important issues, all the local associations, churches and organisations. Just £6 a year to enjoy the smiling faces of your fellow villagers out and about in our community. A mere £6 a year to delight in the antics of the Marina boys, find out what's on at the community centre or try the regular quiz.

To make things easier we have a standing order form (on page 2) which you could complete and hand in at your bank. Or you can make an online payment. Or you could pop in once a year to the community centre to make a donation. We are very grateful to those people who already do this. The £1 is only a guide price... you can give less or more!

Another great way you can support *Target* magazine is by using those companies who advertise. Small businesses often tread a narrow path between success and failure, profit and loss; so we really are very grateful to those who pay issue after issue to advertise and thereby help keep the magazine afloat.

Printed village magazines are a dying format, but *Target* continues to buck the trend and happily celebrated its 50th anniversary last year. We know from your comments that you appreciate the magazine so please, pay for your *Target* and set us firmly on track for the next 50 years!



## BEM Honour for Volunteer Sally

of roles. Long before that Sally walked guide dog puppies and helped out at the sports club in New Road as her children took part in a range of sports.

When someone commented on her lovely garden, Sally had the idea of an annual fund raising Garden Sale.

For many years challenges and fun combined for Sally with the Sail Training Association and their Tall Ships. This plucky lady loved being a volunteer at sea, preferably in a Force 9 gale, climbing the rigging, helping young people to overcome their fears, being part of a team and reliant on themselves; Sally was in her element.

With Wye Valley Volunteers Sally has driven the minibus taking the elderly and housebound on shopping trips, to the monthly tea parties or luncheon club and giving them a chance to get out and meet friends instead of staying indoors within four walls. She works in the office and provides information when there's a call asking for guidance on dealing with a situation associated with older people.



"It's all teamwork," Sally told *Target* "and a wonderful band of helpers. It wouldn't work without them." Then, as usual, she was off to collect someone and take them to the luncheon club.

Our photos show Sally in the volunteer office (left) and, above Sally taking Margaret to the luncheon club.

## OBE Honour for education man...

Riverside resident Richard Millington was awarded an OBE in the New Year Honours for his service to local education as a primary school headteacher and inspiration behind the merger of two schools. More about him in the April/May issue of *Target*.

Sally Williams says her years of volunteering have been "such fun", and they have now resulted in her being awarded a BEM (British Empire Medal) in the New Year Honours List.

It came as a surprise, as Sally admits that over the years she has always welcomed a challenge and thought nothing more about it.

Sally retired 13 years ago and since then she has supported Wye Valley Volunteers in a wide variety

**Plus... Why a certain letter meant so much to Brook House Vets (Story Page 17)**

**And memories of Jacksons Mill (Page 34)**





Target magazine is published by Bourne End (Bucks) Community Association and distributed free to over 5,000 homes in the local area. The distribution network includes Bourne End and Wooburn Green as well as the outlying hamlets of Hedsor, Well End, Little Marlow, Cores End, Upper Bourne End, Wooburn Common and Wooburn Moor.

**Bourne End (Bucks) Community Association**

The Centre, Wakeman Road, Bourne End, Bucks SL8 5SX  
Telephone: 01628 522604  
Office Hours: Mon - Fri 9am to 4pm  
Senior Administrator: Sue Ambrose

Visit: [www.bourneendbucks.com](http://www.bourneendbucks.com) for current information or email [office@bebca.org.uk](mailto:office@bebca.org.uk)

**Editor**

Debra Aspinall  
Tel: 07881 558027  
[editor@targetmagazine.org.uk](mailto:editor@targetmagazine.org.uk)

**Managing Editor & Distribution**

Barrie Penfold  
Tel: 01628 525415  
email: [managingeditor@targetmagazine.org.uk](mailto:managingeditor@targetmagazine.org.uk)

**Advertising & Production**

Barrie Penfold  
Tel: 01628 525415  
[advertising@targetmagazine.org.uk](mailto:advertising@targetmagazine.org.uk)  
Our advertising rate card is on [www.bourneendbucks.com](http://www.bourneendbucks.com). Click on Community Association, then Target.

**Proofreading** Christina Martell and Meriel Riseley

**Printers**

Gpex, Pinstone Way,  
Gerrards Cross SL9 7BJ  
Telephone: 01753 887450



All material appearing in Target is the copyright of Bourne End (Bucks) Community Association. The Editor reserves the right to select letters and reports for publication and to edit for grammar, style and length.

# BULL'S EYE

So 2015 is well and truly under way. I hope it's been good for you so far. It's been mixed in the Aspinall household as I started the New Year celebrating on the Las Vegas strip, heading back on New Year's Day in what can only have been the germiest aircraft in the world. The family then coughed and sneezed their way through much of January thanks to a horrible virus (next year I'm wearing a mask).

But it seems the first month of the year is a bit of a wipeout for most people these days. When did the Christmas break start spreading over three weeks? I'm amazed how many companies run at half speed, or less, until well after 12th night, more like until after 20th night! So even on days when I dragged myself to my desk it was frustratingly difficult to get hold of people and get back to a normal working routine. I don't wish to sound all bah-humbug, but really a couple of days off to digest the Christmas dinner should be enough for any of us!

One January tradition which has taken on more meaning for me since I started doing Target is the New Year's Honours List. It's always exciting to see which deserving local people have been honoured and this year is no exception. Check out our story on the front page and join me in sending them a HUGE message of congratulations.

Debra Aspinall, Editor

**STANDING ORDER FORM TO PAY FOR TARGET**  
PLEASE TAKE THIS OPPORTUNITY  
TO HELP TARGET BY PAYING  
FOR THE SIX ISSUES YOU GET THROUGH YOUR DOOR  
EVERY YEAR (recommended price £1 per issue)

STANDING ORDER TO:..... (your bank)

BANK ADDRESS: .....

DATE: .....

Please pay to: Co-operative Bank PLC, for the credit of the Bourne End (Bucks) Community Association, account number 65217757, sort code 08-92-99, the sum of .....pounds on 1 March 2015 and each year thereafter, until further notice, charging such payments to the debit of my account number.....  
This cancels any previous standing order to the same account.

Name.....

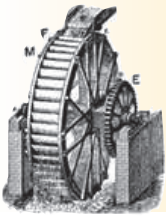
Address.....

SIGNATURE:.....

*OR you can use these bank account details to make an online payment*

## ABOUT TARGET

Target magazine was launched in 1964 to provide information about the new Bourne End Community Association, with the name referring to the money required to build a new community centre. Over the years the magazine has grown, and its distribution area has been extended as the population has expanded through Bourne End, Wooburn Green and the surrounding villages. Bourne End Community Association was formed in 1962 by local people who wanted a social centre to meet the needs of a growing community. Fund raising and determination saw the community centre open in Wakeman Road on 28th October 1967. Another hall was added a few years later and constant improvements have been made over the years. See pages 36-39 for more information on the facilities and activities available at the community centre.



# WOOBURN RESIDENTS ASSOCIATION

By Margaret Amos Secretary to the Association

There is an appetite for community events in Wooburn. As highlighted in our Community Led Plan, more than 80% of respondents wanted more community spirit through more community events. The amount of people who attended our Christmas Lights Celebration bears testament to that, as well as the large number who enjoyed Carols on the green arranged by the Community Church. The Remembrance Service was also well attended on The Green in November.

## Christmas Lights Celebration 2014

Hundreds of people arrived at the Queen and Albert public house on Saturday November 29, to see the Christmas Lights come on at the start of the festive season.

They enjoyed the company of friends and neighbours and enjoyed a mulled wine and mince pie while listening to Takeda Voices (the choir of Takeda Pharmaceuticals of Wooburn Green) sing a Christmas medley. Following that, the Reeve band played. Father Christmas was also on hand to listen to the children's wishes for the big day. The money raised will go towards the maintenance of the Christmas lights.

Wooburn Green looked particularly attractive at Christmas. The association paid for an additional set of white lights in the ash tree and the shops and houses around the green made a special effort to put up lights. In particular, the Red Lion looked very festive and the tree outside the Wooburn Club, twinkling away throughout the period, added to the effect.

## Wooburn Fete – Summer 2015

Following the success of last year's fete, the sub-committee is planning another one on Saturday June 20, on Wooburn Green. It will be along similar lines as last year's fete, with the invaluable help of 1st Wooburn Scout Group

With this newfound enthusiasm for community events on the green, this is your chance to get involved. It would be good to hear from anyone who is interested in making such an event happen. If you feel that you can help in any way, please contact us through our website, or contact Margaret Amos on [margaretamos@tiscali.co.uk](mailto:margaretamos@tiscali.co.uk).

## Community Led Plan

Progress is being made. At the last WRA meeting two of our local Police Community Support Officers attended to address resident's concerns regarding policing the area. We were told that anti-social behaviour has been treated as a priority and as a result has reduced. Burglary was being handled by visiting properties that are clearly unoccupied at regular times of the day and by providing equipment to improve security.

Parking is no longer the responsibility of the police, except where there is a clear obstruction causing a danger. Instead, parking is handled by a company called NSL.

We were pleased to hear that crime in Wooburn is down. Members of WRA will be working with the police at some time during the year to monitor traffic speed in the area. Again, if you would be interested in helping us with the speed monitoring, please contact us via the website or email Maggi Fraser [maggifraser5@gmail.com](mailto:maggifraser5@gmail.com)

## Wooburn Residents' Association's Meetings

Wooburn Residents' Association's meetings are held on alternate months on the second Monday of the month, at 8pm. Please check the website for the venue [www.wooburnresidents.org](http://www.wooburnresidents.org).

The next meeting is on March 9, in The Garden Room at The Queen and Albert Public House. You can be assured of a warm welcome.

# MARTIN VEHICLE SERVICING ADAMS

## YOUR LOCAL MOT SPECIALIST

A friendly family run business with  
30 years experience

Servicing all cars, new and old also light  
commercial vehicles.



- General car repairs and maintenance
- Free courtesy car available
- Tyres, exhausts and batteries supplied and fitted
- Latest diagnostic equipment for all makes of vehicle
- Air conditioning service available
- 30 Years Experience



# 01628 850000

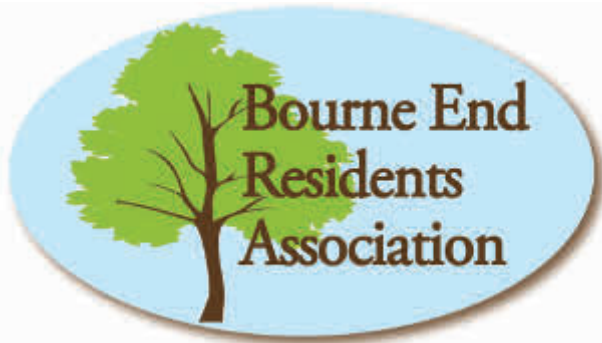
email: [info@mavs.co.uk](mailto:info@mavs.co.uk)

Alexander House, Wessex Industrial Estate, Bourne End



*Support local shops and businesses*





Many words have been, and will be, written about Slate Meadow and Wycombe District Council's decision to release all the Reserve Sites for housing. There will be time at some point in the future to reflect on the whys and wherefores. What is important now is that we all deal with the reality of the situation that exists. That reality is that Slate Meadow has been released and could, or even will, be developed.

Liaison groups have been set up which include local residents to Slate Meadow – that is Stratford Drive, Cores End Road, Frank Lunnon Close etc plus representatives from the parish council,

WDC ward members and the residents associations. The group is about a dozen people in total and will be meeting to discuss, over the next year or so, plans proposed by developers.

If anyone thinks that everything will be straightforward then many of us in the group will wish to prove them wrong. Our

intention from the first meeting onwards is to point out problems such as potential flooding, an over-extended sewerage system, clogged-up roads together with over-subscribed schools, doctors' surgeries and other infrastructure issues.

I believe our brief is to say – sort out these problems and then we can talk about possible development.

Now this is where everyone in any part of Bourne End or Wooburn, or indeed further afield, has a part to play.

On Saturday March 14 there is an all-day workshop run by A R Urbanism on behalf of WDC in the large hall at Bourne End community centre in Wakeman Road. The event starts at 10am and will run until 4.30pm. Full details are printed here.

It is preferable if you can attend the whole session, but if you cannot make all day then please turn up for part of the workshop. Your attendance at this workshop is vitally important.

Concerns voiced will then be fed back to the liaison group for consideration and action by them. Clearly the stronger the number of issues raised and the greater the number of people expressing their opinion then the more that the liaison group has to work with when challenging any development plans.

Frankly this may be the last chance for local concerned people to express an

opinion. To help the organisers of the event you are asked to register your attendance. I will, however, be looking for assurances that latecomers will be accepted on this workshop as long as the hall has the capacity.

Please attend this workshop, please state your objections and concerns. The liaison group will be trying to restrict the number of houses that may be built. That number could be nil or it could be so small that the scheme becomes unviable for any developer. That is our hope and aim. We will not give up on the open vista that is Slate Meadow.

Once again thank you for reading this article and if you have any questions or queries feel free to ring me on 01628 525415.

Jim Penfold

### Slate Meadow Workshop

**WDC have appointed AR Urbanism to run this workshop. They have a wide range of experience in engaging local people in planning projects. Councillors and officers will also be attending.**

**By holding an all-day event, from 10am to 4.30pm, it will allow for much more in-depth discussion than we have been able to achieve in evening meetings to date. The purpose of the workshop is to build on the issues you have already identified, and to start exploring how these might be addressed**

**Slate Meadow – Saturday March 14**  
**Community Centre, Bourne End**

To register for this workshop please email  
[team@wycombe-reserve-sites.org](mailto:team@wycombe-reserve-sites.org)  
or contact Riccardo Bobisse on  
0203 290 8979.

**Classic Beauty**  
for  
Beauty treatment from fully qualified and caring therapists  
Using top quality products from  
*Pridara* Skin care, *Caci* non surgical facial and body treatment  
*Jessica* manicure and pedicure  
The unique and hygienic *Phd* waxing system  
Open 9am until 8pm most nights  
17a Soho Mill, Wooburn Green Tel: 01628 850688

**CHATTELWORTH LIMITED** **CW**

**CONSTRUCTION**  
All aspects of general building works:  
\*Extensions/Alterations \*Renovations \*Carpentry/Joinery  
\*Brickwork/Paving \*Plastering \*Commercial & Domestic

**FULL DECORATING SERVICES**  
\*Painting \*Internal/External \*Wallpapering \*Commercial & Domestic


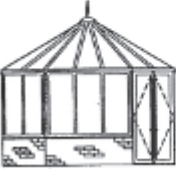


**GENERAL**  
\*Roofing/Slating/Felting \*General Maintenance

**PURPOSE MADE JOINERY**  
\*All aspects of purpose-made joinery from our own in-house workshop

**MONARCH** windows, doors & conservatories  
also \*Plastic Fascia \*Barge Boards & Cladding \*Guttering  
A first class service at very competitive prices, call now for a no obligation quotation

*A members of the Federation of Master Builders and FMB (Masterbond) Warranty Scheme*

Chattelworth Works,  
95a Queens Road, High Wycombe, Bucks HP13 6AH  
Tel/Fax 01494 461544

**saxons**

**2 Furlong Road**  
**Bourne End**  
**Bucks**  
**SL8 5DG**

Come and visit our London trained professional stylists working to the highest standards  
Whether you require advice on cutting or colour techniques Saxons is the salon to be seen at!  
Open Monday – Saturday  
9am – Late (by request)  
Saxons welcomes your call  
**01628 524255**





**A. Stride**



**Heating & Plumbing**

**Roofing**

**General Building**

**Painting & Decorating**

**Replastering & Guttering**

**Service**

**Estimates Given Free**

**Telephone: 01494 440219**

**Mobile 07973 439781**



**THE WALNUT TREE**

HEDSOR ROAD, BOURNE END, SL8 5DN  
Tel: 01628 532417 www.walnuttree.co

OFFERING PUB FAVOURITES  
TRADITIONAL SUNDAY ROASTS  
& BOARD SPECIALS  
ALL FRESHLY PREPARED

**NEW** FROM FEBRUARY  
TAPAS TUESDAYS 6PM-9PM  
3 DISHES FOR £12

TAKING VALENTINE'S &  
MOTHER'S DAY BOOKINGS

COSY OPEN FIRE  
ON COLD WINTRY DAYS

DOGS & MUDDY BOOTS  
VERY WELCOME!

**For Hire - Two Halls  
& kitchen facilities**

Ideal for children's parties; aerobics;  
dancing; ballet classes; meetings, etc.

Contact Ann 01628 526865  
or Muriel 01628 523622

Ample parking @ Cores End Church

**ABSOLUTE CLEANING**

**Windows & Gutters  
Domestic & Commercial**

**Ring Mark Holt**

**0791 2985500**

**HUGHES**

**BUILDERS MERCHANTS**

CALL IN FOR A FRIENDLY, PERSONAL  
AND LOCAL SERVICE

**BRICKS, DIY SUPPLIES, BLOCKS,  
AGGREGATES, PAVING SLABS,  
TIMBER, CALOR GAS, PAINT,  
SALT and COAL**

**01628 522022**

24 Whitepit Lane, Flackwell Heath, Bucks.

**11 PLUS TUITION**

**\*For the New 11+ Test\***

Experienced primary teachers in  
Bourne End

01628 299856 / 521828

www.11plusacademy.com



**Another Answer**

Books and Accounts

Efficient, Friendly and Local

TEL: 01628 530805

EMAIL: sylvia@anotheranswer.co.uk

14 The Parade, Bourne End, SL8 5SY

www.anotheranswer.co.uk



Apple, Microsoft, Intuit and Sage approved by  
AAT under license number 8878



**INDIVIDUALS – SOLE TRADERS – SMALL BUSINESSES**

Bookkeeping • Payroll • VAT • Tax Returns • Accounts

**We'll open it now!**

**SECURE  
HOMES**

**30 MINUTE  
RESPONSE**

**UPVC LOCK SPECIALISTS**  
All Domestic  
& Commercial Lock Problems  
Solved by your Trusted & Reliable Family Business

• POLICE RECOMMENDED AND INSURANCE APPROVED LOCKS SUPPLIED & FITTED  
• ALL TYPES OF DOOR & WINDOW LOCKS FITTED, OPENED, REPLACED & REPAIRED

- UPVC
- CHUBB
- YALE
- UNION
- ERA
- LEGGE
- ASEC
- VIRO
- ABLOY
- CISA
- ASSA

01628 528433

Or if line busy: MOBILE

07831 487222

www.allsecurehomes.co.uk

10 Thames Close, Bourne End Bucks SL8 5QJ

FREE Advice, Surveys & Estimates

**TALK TO A LOCAL LOCKSMITH ... not a Call Centre!**



Chubb Locks Yale GE GE UNION



We will give you  
a competitive  
**FULL QUOTE**  
before we start any  
locksmith work

**ARNOLD  
FUNERAL SERVICE**

Private family business. Private chapel of Rest.  
Traditional and Alternative Funerals.  
Home arrangements by appointment.  
Pre-payment plans available.

891 London Road, High Wycombe  
01494 472572

38 Oak End Way, Gerrards Cross  
01753 891892

32 Gregories Road, Beaconsfield  
01494 685000

21-23 Little Marlow Road, Marlow  
01628 898866

273 Farnham Road, Slough  
01753 535556

www.arnold-funerals.co.uk



**24 HOUR SERVICE**

*Please support Target advertisers*



# Marina Life with Peter Osborne



What a difference from this time last year. The water levels are currently quite low, the weather has been reasonably dry and mild and the boys have started working on boats in January!

Last year very little work was carried out on boats out of the water at this time as they were 'in' the water and the marina owners advised that there was no budget for a sub aqua kit in the accounts.

I don't miss the floods of 2014, but Matty and Chaos do and are disappointed, you've guessed it, that they have to work as opposed to swanning about posing for photos and doing TV interviews on the tug etc.

In comparison to this time last year we have got off to a flyer. Several boats have called by for supplies and, as mentioned, we have started work on the boats on the hard. This will ensure we are able to increase our revenue in these regards over last year.

The floods did impact on our revenues other than the mooring income, but a couple of words with 'him (or her) upstairs' and we have been able to get started earlier in 2015. Our mooring contracts renew as of April 1 and we expect to be full again for this period, as ever.

The Christmas and New Year period passed without any 'battle scars' to show. The Marina's Gentlemen's Lunch Afternoon was a success with about 30 people on parade and it actually lasted until supper.

All staff reported for duty on time the following day although the hair of the dog was required in some cases.

We would like to thank Mark and Kaz at the Black Lion for a great time, apparently as we have been told, they are wonderful hosts. During the festivities the marina was closed, but as usual we made daily

visits to check the moorings, clean the loos etc. and to seek respite from the family (I didn't mean that of course). A few sales of fuel and gas etc were made during this period to customers who had pre-arranged their visits to coincide with our security checks. As we say, we are never knowingly closed.

There is a lot of noise coming from above the marina office. This is an encouraging sign that the Riverlight Restaurant is coming on and at the time of scribing this missive it is believed that they are hoping to open late January or early February.

We Marina Boys are hoping that it will be open by the time you read this article. As the opening gets closer the boys are getting a lot more excited. They seem to take great interest in licensed restaurants; whether it's for the food or the drink I am not sure.

Working at the marina is obviously very seasonal. At this time of year we are working on the accounts for our year end and also preparing for the coming season which traditionally starts at Easter.

Although there is not a great outward sign of activity there is much of the dreaded admin and ordering of stock to facilitate.

This is on top of the maintenance we have to undertake on the facilities, the pontoons, equipment etc. The idea is, of course, that come the season, everything runs smoothly.

This tends to work apart from with Matty and Chaos, who seem to break down much too often. I have not found a reason for this other than I understand that machinery tends to fail unless it works regularly. I rest my case.

Strangely enough the boys are currently coating all our wooden fences with a

protector so they will be looking good for the new season. An added bonus is that they will be non-slip this time so we won't be falling off them or losing our footing.

You might ask why non-slip? Well they found these three tins in the stores which were left over from coating some decking. They didn't realise it was non-slip decking paint until they asked me to obtain additional supplies. I am researching basic reading courses combined with a 'paint tin recognition' course for them at the moment. How many people have non-slip fences and why?

Due to the peaceful start of the year we have not had any rescue missions to undertake with the tug, which is obviously in contrast to last year.

Also, with various locks being closed for routine maintenance, the passing traffic has been limited, albeit a great improvement over 2014.

The bulk of the river movements at this time of the year are the 'livaboards' boats that call in for fuel, water, sewage pump out and Calor Gas.

We love to take the tug out in adverse conditions on a rescue mission, it's all Boys' Own stuff and can get the adrenaline pumping, but we experience this fun usually at someone else's expense as they will have to part with money and/or sustain damage to their craft which is the downside of such activities. However, that what we're here for, among other things.

For those who are unaware we do have a Facebook page. This only gets used when there is a point of note to get across, it is not used for general banter (I knew him when he was a Lance Corporal).

We report such matters as flooding and if the paths are passable or not; any unusual goings on at the marina and such matters. It is intended to be informative.

If you "friend" us you will get our notices as and when we post them. It is meant to be professional.

Well, I'd better go and check that the boys haven't slipped off the fences and are still administering the gunk as opposed to hiding in the stores or elsewhere. They know every nook and cranny of the marina to evade my patrols, even some that I don't know about!

**Peter Osborne,  
Marina Manager**

**HOME PC HELP**

- All PC/networking problems
- No callout charge
- No fix – no fee
- 35+ yrs experience

For friendly, personal advice call

01628 630096  
or 0778811 3279  
(7 days inc evenings)  
[www.homepchelp.org](http://www.homepchelp.org)

**Colin's  
Garden  
Services**

Tel: 07884 262871

Garden

Grass Cutting	Hedge Cutting
Maintenance	Fencing
Patios	Turfing

Services





## Soroptimists raise more than £8,000 to fight EBOLA

At the Soroptimist International of Great Britain and Ireland's October annual conference the local SI Thames Valley club highlighted the problems of their on-going Kori Women's Development Project in Taiama.

Founded by a current member of SI Thames Valley, this successful project aims to empower and educate women and girls in the Kori District of Sierra Leone by helping them cultivate land, grow crops, have the chance to take out micro-loans and also to build a library.

Unfortunately the village of Taiama, the home village of founder member Rose Simbo, has been caught up in the EBOLA crisis.

The amazing total of over £8,000 raised during the Soroptimist conference will help the affected people battle the virus and to get back to some sort of normality.

Soroptimist generosity has been inspirational as has that of friends and relatives of SI Thames Valley members.

The local group meets on the third Tuesday of every month (except August and December) in Bourne End Community Centre. For more information on us visit our website: [www.sitv.org.uk](http://www.sitv.org.uk) or come along to see what we do and who we are.

## Future of Our Village (FoOV)

Report by David Langford

Our AGM was held in November at the community centre with Lee Turner, representing the Thames Valley police, as guest speaker.

He spoke about the Speedwatch project which now has more modern equipment than was the case when FoOV did some training a while ago.

Following campaigns elsewhere, more than 1600 warning letters were issued to motorists in Bucks in 2013. There was a lot of interest in the situation on Marlow Road by Clayton's School. Lee said something would be set up in the new year in conjunction with local PCOs, Neighbourhood Watch and the school.

The chairman reviewed the past year which had been dominated by Slate Meadow and how the attitude of the district council had hardened over the year. Planning permissions have yet to be granted so there is mileage in continuing the fight. Councillors Brian Pollock and Mike Appleyard are strongly opposed to the actions of the district council.

There were contributions from Jim Penfold on the Day Centre and Simon Fowke on Youth Clubs. The AGM also saw Doug Meredith elected chairman and David Langford moved to secretary while Sue Wagner stayed as treasurer.



There is a wonderful selection of mouth-watering dishes on the comprehensive menu at The Last Viceroy.

They include coconut lamb, apricot lamb and cashew nut chicken alongside starters, specialities, traditional Balti, Tandoori and Biryani dishes as well as delicious seafood and vegetarian choices. The friendly and attentive staff will advise you if you are unsure about any dishes on the extensive and varied menu.

You can opt for the Khas-e-Viceroy at £24.95 per person where the chef will prepare a mixed starter, main dishes and side dishes with rice and bread. Or choose the chef's special dishes which are cooked with fresh ground spices and prepared by a slow cooking method to bring out the delicious flavours; six hours' notice is required for these meals.

The restaurant is well-established, having opened 28 years ago. Its cuisine attracts regulars and newcomers alike and its striking interior is divided by floor-to-ceiling pillars, making The Last Viceroy an ideal venue for a cosy dinner for couples or large parties. Open for lunch, dinner and take-aways seven days a week.



74 The Parade, Bourne End SL8 5SS

**01628 531383 / 530798**

[www.thelastviceroy.co.uk](http://www.thelastviceroy.co.uk)



### Farm Wood

We have been looking at ways to improve the parking at the Broad Lane entrance to Farm Wood.

The area has always been awkward for parking more than a few cars at a time and reversing out onto Broad Lane was always a matter of chance.

After a site visit involving councillors and grounds men it was decided to square off the left hand side by moving the fence back and laying a gravel base. This has made it far easier for cars to park side by side and visibility to oncoming traffic has been improved.

The Farm Wood footpath from the main entrance on Broad Lane to the pond area along with the bridleway has also been subject to some clearance work.

As the area was very overgrown the Parish Council hired Blue Sky to support our grounds men to help clear the backlog of work. Having the added help of Blue Sky meant that our groundsmen didn't get behind with their normal day-to-day duties.

### The old cemetery

Blue Sky was also asked to help clear the overgrown vegetation in the old cemetery situated over the river from St Paul's Church.

The original intention was to undertake light maintenance to this cemetery to allow it to become a butterfly/wildlife area. Unfortunately, over the years, the vegetation has got out of hand and so the decision was made to start again by clearing the whole area and to keep it managed and maintained in the future.

Our grounds men have carried on where Blue Sky left off and have been uncovering the old gravestones and will be landscaping the area and replanting when the weather allows.

The landscaping and replanting will include butterfly and insect friendly plants in order to continue to attract wildlife to the area and will include some areas that are left largely undisturbed with only light maintenance to keep them from getting out of hand again.

We have already received positive feedback from a visitor to the old cemetery regarding what has been done to the area so far.

### Street lighting

At this time of year it is more noticeable when a street light isn't working. Our contractors maintain the lights on the side roads in the parish. Bucks County Council look after all the street lights on the main highways which also includes belisha beacons and lights on road signs. Bucks County Council lights can be reported to Transport for Bucks on 0845 230 2882. Their policy is to repair their reported lights within 28 days.

Our street lights can be reported to the office on 01628 522827. We will require the post number if possible and an accurate location so that we can pass the information on to our contractors.

Parish lights are usually dealt with within a few days unless there is a bigger fault with the light or the supply. Occasionally bad weather such as strong winds or ice/snow makes it too dangerous to set up the cherry picker to change the bulbs or sensors. In this case our contractors will fix the light at the earliest opportunity after the weather conditions improve.

### Short and sweet

The new additional picnic benches and seating for the play areas have now been delivered and the grounds men will be installing them as and when their schedule allows.

#### Meeting Dates

**Full Council: February 24, March 24**  
**Open Spaces, Allotments & Burials: February 3, March 3**  
**Planning, Highways & Lighting: February 18, March 11, April 1**  
**F&GP: February 10, April 14**

**All meetings start at 7.30pm.**

Normal Parish Council Office opening hours are from 9am to 5pm each day. Please call 01628 522827 if you have any queries, alternatively email the office at [clerk@wooburnparish.gov.uk](mailto:clerk@wooburnparish.gov.uk) or visit our website for information on [www.wooburnparish.gov.uk](http://www.wooburnparish.gov.uk)



#### HAND MADE FURNITURE

Architectural woodwork, furniture, antique restoration, panelling, staircases, gilding, lettering, woodcarving, churchwork, sculpture, interior design and free advice.

#### LILLYFEE WOODCARVING STUDIO

Lillyfee Farm Lane, Wooburn Common, Bucks HP10 0LL  
Tel: 01494 671690

Studio open for visits by appointment

#### WOODCARVING COURSES

Take a new direction and create beauty under the guidance of experts. Call the number above for dates and details.

### Tree work in the cemetery

Councillors have decided that the large conifer type trees that line the central road in the cemetery have got out of hand and have made the decision to remove and replace them with trees that are more suitable and in keeping with the area. Quotes have been obtained and the work will be taking place in the near future.

Signs informing the public when the works are to take place will be put up in the cemetery and on our notice boards and website. We do not envisage the cemetery being closed while the work takes place, but we do ask for your patience and understanding in case the need arises to close it for short periods as the safety of all visitors to the cemetery is our primary concern.

Burials will take place as normal as the tree contractors will work around this.

Additional parking has also been considered for the lower part of the cemetery and plans have been put in place to widen the path that follows the left hand side of the roadway opposite the council offices.



#### Martin's Maintenance & Plumbing

Kitchens Bathrooms  
Interior decorations  
Carpentry & cabinetmaker

Mobile 07725059321  
[martinwhite26@aol.com](mailto:martinwhite26@aol.com)

#### Do you have a Sick PC ?

or a Misbehaving Laptop ?  
Visiting support for PC problems.  
Small Business, Home Office.  
'Silver-Surfer' & Saga generation assistance & tutorials.

Call, Jonathan - 01628 486712  
[www.ComputaSolv.co.uk](http://www.ComputaSolv.co.uk)

"Fixing your computer problems"







## Inspirational forestry

Becoming a National Demonstrator is the top accolade in flower arranging terms.

When Bourne End Flower Arrangement Society booked a national demonstrator for December it certainly meant that the displays created would be different, probably inspiring, but definitely eye-catching. Tracey Griffin certainly didn't disappoint flower club members and visitors who came along to see her interpretation of 'Forever Festive'.

And lucky raffle winners took home the displays created on the night.

Not only were Tracey's displays spectacular, but it was good to see so much natural greenery, scrimped from the woods around her Hampshire home, at a time when fresh flowers are expensive and difficult to find in tip top condition.

Glistening leaves, bright red berries and the brown of bark and pine cones formed the basis of some displays while painted twigs and small branches needed the minimum of flowers to look good.

While she worked Tracey talked about the flowers, the foliage and her love of moss which she used to fill gaps, soften lines and add an earthy smell. She played some of her favourite music tracks as a display was close to being finished so her audience could enjoy the music as they looked at the finished creation. There were stories, humour and, throughout it all, a passion for flowers and her dog.

It was a very entertaining evening for members, guests and visitors. Regular demonstrators take place on the first Tuesday in the month at the community centre's main hall. The next National Demonstrator will be Jacqui Arnold on May 5 but don't wait until then – there's Tuesday February 3 and March 3 to spend an evening seeing the skilful creation of interesting flower displays.



# Aztec heating and plumbing

Repairs to all Gas Boilers & Servicing Contracts

Also General Plumbing Repairs

Central Heating, Pumps, Valves, Timers & Programmers

Tel: (01494) 440219 home

Tel: 07973 439781 mobile

Tel: 07831 563477 mobile

## Samson Windows

*We're Successful Because We're Different*

- Top Quality Installations
- High Security
- PVCu & Aluminium
- Windows, Doors & Conservatories



**FENSA**  
Registered Company



MA346711

NO Pressure Selling

NO Discounts for Quick Decisions

- we want you to be sure

NO Show House Special Offers

- we'll do a superb job anyway

NO '6 windows for £1500' - plus another 50% for essential extras - in fact -

NO nonsense at all - just excellent quality, workmanship & value guaranteed to secure your recommendation

NOTHING free - except information & advice



*The Beauty of the Past  
The Efficiency of the Present  
PVC Sliding Sash Windows  
Virtually Indistinguishable  
from Traditional Timber*

**FREEPHONE 0800 146165 or 01628 524469**

# AS GOOD AS NEW



Mobile Bodywork Repairs

**DAMAGED YOUR CAR?**

**Scuffs, Scratches & Dents**

**Call Malcolm now for a free quotation!**

**Office: 01628 532586 Mobile: 07786 482262**

*Turn to page 39 for our calendar of local events*



## Could you be a parish councillor?

Happy New Year! 2015 is going to be a busy year with the elections due to be held in May this year. You may have noticed that the media is just starting to build momentum with all the main parties starting to reveal their key policies to win your vote.

The May elections also will see district and parish councillors elected. Parish councils are the first tier in local government and therefore seen as the closest to the views and needs of local people. Parish councillors are

independent and have no affiliation with any political party. They are volunteers who care about the community they live in and want to make sure that the precept is spent in the best way for the parish they represent.

Does this appeal to you? Would you like to get involved? Little Marlow Parish Council has nine councillors and we know that some will be retiring at this election.

While May seems like a long way off, it is amazing how quickly it comes around and nominations to be a parish councillor need to be registered with the district council by April 9. Should you wish to find out what is involved or have any questions, please do not hesitate to contact me at the parish office.

## Fern Lane Cemetery

Work has progressed in Fern Lane Cemetery following its 'spruce up' in November.

We are in the process of marking out a new area for ashes interments and looking to the future with regard to the capacity of our cemetery. The chapel vestry window has been beautifully repaired and restored. It looks amazing and is back to its former glory.

## Bus service

The Saturday Community Bus service will cease to operate from January 31. This one year pilot was funded by the Chepping Wycombe Community Partnership and SW Chilterns and Local Area Forum.

Sadly this service was not utilised enough to make it financially viable. However we do understand the community weekly bus service is a real lifeline to our community, therefore Little Marlow Parish Council, Marlow Bottom Parish Council and Marlow Town Council will continue to provide funding for this service to continue.

## War memorial

We were delighted to be informed that we would be successful in receiving a grant to repair the war memorial outside Little Marlow Parish Church. The roof covering the commemorative plaque is damaged. The work will be completed in time for Armistice Day later this year.

## Tree work

Little Marlow is a very rural parish and has many trees! We are currently undertaking a lot of work on the perimeter trees at the recreation ground. This includes the planting of some new Lime trees along the roadside edge - by the pavilion. These trees will be a lovely edition to the recreation ground replacing old dead ones.

**Little Marlow Parish Council**  
The Pavilion, Church Lane,  
Little Marlow, Bucks SL7 3RS  
01628 890301



**Raising the standard in domestic cleaning**

- \* Regular cleaning, weekly, bi-weekly or monthly
- \* End of tenancy cleans
- \* Spring cleans
- \* Quality, vetted staff with smart uniforms
- \* 1st class oven and carpet cleaning service

Call Jenny or Chris on  
**01628 521497**  
[www.casa-fresco-cleaning.co.uk](http://www.casa-fresco-cleaning.co.uk)

**ALL THE LATEST NEWS ON**  
[www.bourneendbucks.com](http://www.bourneendbucks.com)

**LOG ON NOW!**



## Amazing Dentures

*Eat, Talk, Smile*

We can help you live life to the full once again with our beautiful, tailor made dentures. Andrew Dougan is a highly qualified Clinical Dental Technician who has been dedicated to bespoke denture creations since 1969.

- True life teeth & latest materials
- Repairs & alterations
- Cosmetic denture enhancements
- Denture problem solving
- FREE car park

For honest, friendly advice or to book a FREE consultation call  
**01628 521003**



17 Straight Bit, Flackwell Heath, Bucks HP10 9LS  
Andrew Dougan  
Exp. CDIT RCS (ENGL) RETE  
GDC No. 162175  
[www.denture-world.co.uk](http://www.denture-world.co.uk)



Try our two week Free Trial and see what your child can achieve with the Kumon Maths and English Study Programmes.

Contact your local Kumon centre for more details:  
Flackwell Heath Study Centre  
**01628 532620**

Free Trial available throughout February\*



**Free Trial**

[kumon.co.uk](http://kumon.co.uk) \*Terms and conditions apply. Free-tries. Please refer to your local study centre. **KUMON**



# Volunteers get-together

A highlight of Wye Valley Volunteers 'thank you event' in the community centre is a raffle with great prizes. Top prize is always a packed fruit and vegetable basket prepared by Peter Emmett, himself a volunteer, from Emmett's Farm Shop in Little Marlow.

John Kelly, who organises the community mini-bus arrived in time to buy some raffle tickets and then scooped the star prize. "I'm delighted," was his first reaction and then "It's wonderful" when he saw the range of delicious goodies carefully packed into the basket.

Wye Valley Volunteers offer a wide range of help including transport to medical appointments, home visits, shopping trips, monthly luncheon club and regular coffee mornings. Their volunteer office in the portacabin alongside the community centre in Wakeman Road is open from 10am to midday from Monday to Friday and there will be someone there who is ready to listen and, where possible, offer guidance and advice as well as suggesting how their services might help. You can ring them on 01628 521027.

Our pictures show John Kelly with that fabulous basket of fruit and vegetables. And, above, volunteers Jane Burton (left) and Janet Jones hoping their raffle number will be called. Jane is a team member in the volunteer office and Janet is a home visiting volunteer.



ALL THE LATEST NEWS ON  
[www.bourneendbucks.com](http://www.bourneendbucks.com)

LOG ON NOW!



St NICHOLAS' CHURCH, HEDSOR



**FAMILY WORSHIP**

Children and families are very welcome at all services at Hedsor (every Sunday at 9.00).

On the 2<sup>nd</sup> Sunday of each month there is a *Pathway* service specially designed for the whole family.

The *Pebbles* Group, for under 11s, continue to meet. Now, due to its popularity, it will meet in the church every Sunday of each month at 9.00. *Pebbles*, with its blend of activity-based Christian teaching and fun, is led by an experienced and popular team of adults.



St Nicholas' Church Hedsor



**CROWDEN**  
• COACHWORKS LTD •



- Car Body Repairs •
- Garage Services •
- Accident Repair Services •
- Insurance Repairs •
- Paint Spraying & Much More •

**We repair all makes and models and also deal with all insurance companies**

5A The Green, Wooburn Green, High Wycombe, Bucks HP10 0EE

Tel 01628 526463

[www.crowdencoachworks.co.uk](http://www.crowdencoachworks.co.uk)

*Support your local craftsmen and traders*





## Blown away by academy rock show

*Review by Mike Ware*

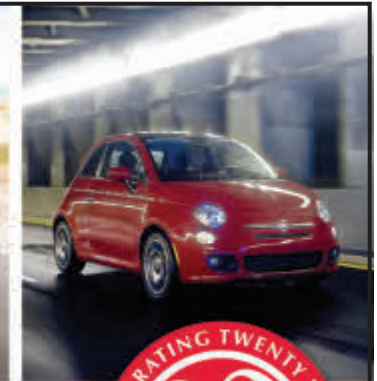
The week before the Christmas holiday was a busy one for Bourne End Academy.

After the Presentation Evening there followed a production of *We Will Rock You* - the musical set around Queen's hit songs. It was the first production put on by the new academy.

I have to say I was completely blown away by the quality of this show. The team, led by School Director Sam Munday-Webb and Head of Performing Arts Louise Smyth, did a fantastic job to put together a very professional performance.

Those taking the lead were excellent but what impressed me most was the way in which so many students from across all year groups had a part to play and gave it their all. On the opening night the audience gave it a well-deserved standing ovation!

The "feel good factor" was just brilliant and if what I witnessed is a reflection of school life then we should all be very pleased to have BEA on our doorstep.



Bourne End Motor Company was established in 1994 and in that time we have built a reputation for offering the personal and professional approach normally only found in the more prestigious franchised dealerships.

We have become recognised as one of the leading specialists in low mileage, privately owned cars with full service history. Most of these cars are between six months and four years old. As well as your regular family cars ie. Ford, Vauxhall, Fiat, Mini etc, we also sell luxury brands such as BMW, Mercedes.

Over the years we have built up a vast range of suppliers and through these we can source almost any make and model of car, all of which offer a significant saving than those offered by the larger Franchised Main Dealers whilst still matching their standards.

WAKEMAN ROAD • BOURNE END • WICKINGHAMSHIRE • SL8 5SX • TEL: 01628 533 222 • FAX: 01628 530 264



- Local Family Business
- All Cars HPI Checked with Service History
- Computerised Stock Locator System
- Most Makes/Models available
- At least six months Warranty on all vehicles

TEL: 01628 533 222  
WWW.BEMC.CO.UK



# A Celebration of Excellence at Bourne End Academy

It was a real testament to the Bourne End Academy (formerly Wye Valley) that so many former students returned to accept their exam certificates in person at the annual Celebration of Excellence ceremony in December.

Both GCSE and A level certificates, as well as several special awards, were presented by guest of honour Dame Marcia Twelftree, a leader in education management who was made a Dame of the British Empire (DBE) in January 2010 for services to national and local education.

She spoke to the students about the importance of trying hard enough when you are at school or university and the immense sense of achievement that can be felt when you open that exam result envelope to find your results are as good, or better, than hoped.

She said: "Education is about opening doors and giving us options. You don't want your grades to make the decision on which doors are open to you and which doors are closed."

She also quoted Nelson Mandela who said: "Education is the most powerful weapon which you can use to change the world."

Former student Carrie-Anne Holmes gave a very polished speech on how Bourne End Academy had prepared her for life at university.

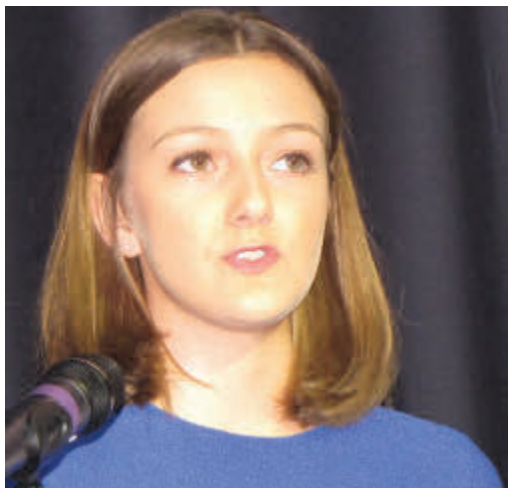
She spoke about how she had been a quiet, reserved pupil when she started at secondary school, and how, by taking advantage of the many clubs and extra curriculum activities at school, she had grown in confidence to the point she was unfazed by standing and speaking at this event.

Carrie-Anne is now studying Geography at Bath Spa University, where she is a Student Ambassador, and she is also doing a Certificate in Global Citizenship. She advised students to: "Take every opportunity that is given to you".

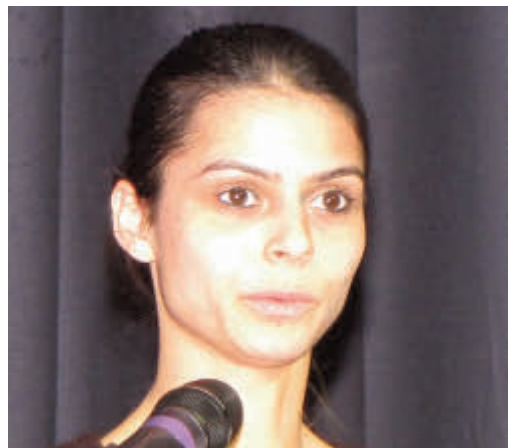
Another former pupil, Victoria Baptiste, who left 10 years ago, spoke about leaving Wye Valley School without any idea of what career she wanted to pursue. But she confidently applied for a job in children's photography and discovered she had a real talent. She has now won awards, shot major advertising campaigns, held an exhibition and opened her own photography studio.

She told students: "You have such an exciting journey ahead of you. The skills you've learned here will carry you through your careers."

The event was tinged by sadness. A respectful silence was held for former student James Fifield, who was tragically killed in a quad bike accident while on holiday last summer. Guests also applauded when James's name was called out among the A level student results.



Guest speaker Carrie-Anne Holmes

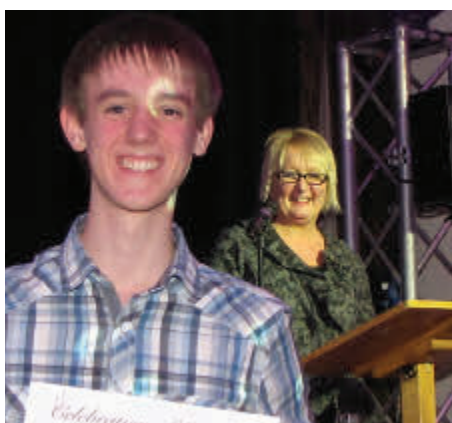


Guest speaker Victoria Baptiste

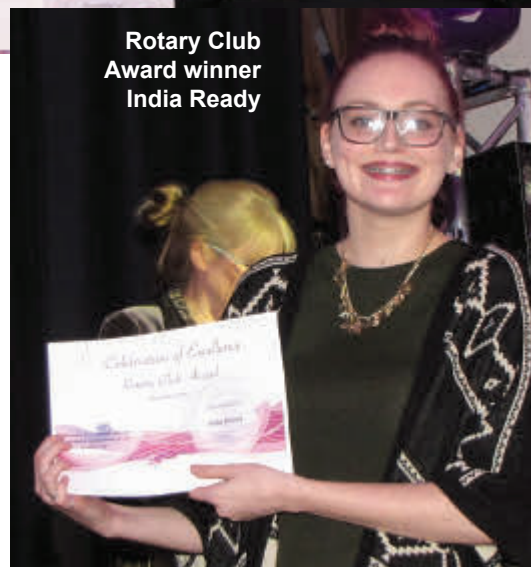
Students of the year (Year 11) Aimee Ryan and Callum Baldwin



Students of the Year (year 13) Bruno Russell and Mona Soussi



Above, Rotary Club Award winner Brandon Cullimore and left, special award winner Philip Chalmers



Rotary Club Award winner India Ready



## A different view on Christmas

Amid all the traditional festive delights the St Mark's Christmas Bazaar offered a different challenge. Shock, horror, one of the Kings had lost the gold he was carrying as a gift for the child born in a stable. From a map of the land around the stable at Nazareth the challenge was to find the gold.

John Rosewarne was delighted with the unusual fund raising idea, but admitted that the greatest challenge came as he had to remove the gold from the arms of the King. "It took ages on the computer" he laughed 'but had to be done to make the challenge believable'.

It certainly caught the imagination of those visiting the fair and they were keen to put their pin marking their dig on the map in the mountains of Turkish Kurdistan (East Turkey). Check the close up picture to see where the gold lay (red pin) and the very close winning (blue pin). So John, what will be the unusual challenge for Christmas 2015?

## Knit-ivity!


Dorothy Attwood loves to knit and she's an inspiration to friends at the Knit and Natter Group in Flackwell Heath. Baby clothes, children's jumpers as well as blankets for the elderly combine to keep Dorothy knitting every spare moment. Everything she does is for charity, so she responded to the challenge to knit something different that could be raffled and help the Thames Valley Hospice.



The result was a knitted Nativity scene with all the familiar characters from a pattern in Dorothy's collection. She said the longest job was sewing all the pieces together to make sure they all looked right, including the kings in their robes and bearing gifts. It had pride of place in the charity shop on The Parade in Bourne End and 76 people bought raffle tickets for a pound each.

A couple of weeks before Christmas Dorothy drew the winning raffle ticket and presented the Nativity scene to fellow Flackwell Heath resident Jane Wybrow. Jane was thrilled and said "it has given me and my two granddaughters a great deal of pleasure. Our photo, left, shows Dorothy Attwood (left) with Jane Wybrow and her winning raffle ticket.

*The CACI Pod*



- \* Facial Lifting \* Lines/Wrinkles
- \* Eye Bags \* Microdermabrasion
- \* Skin Hydration \* Neck Treatments
- \* Cellulite, Stretch Mark Treatments
- \* Jowl lift NEW

Our CACI Ultimate lifting treatment is both preventative and rejuvenating

*Give your face a workout! Give your face a lift!*

thecacipod@yahoo.com Tel/Text 07901 276977

Magnolia House, Bourne End, Bucks SL8 5TZ Visit: [www.caci-international.co.uk](http://www.caci-international.co.uk) for more information

20% off any course with this advert

**Justin Willment**  
Painting & Decorating

Specialising in all aspects of Painting & Decorating



01628 526 528  
07840 715 444  
[jrwilment@hotmail.com](mailto:jrwilment@hotmail.com)

**CITY & GUILDS QUALIFIED FULLY INSURED**



BY APPOINTMENT TO  
H.M. QUEEN ELIZABETH II  
HEATING & PLUMBING ENGINEERS  
R.S. BOILER SERVICES



Reg No 62

**RS Boiler Services**

Gas • Oil • Heating  
Plumbing • Electrical  
L.P.G. Specialists • Propane • Butane

**TEL: MARLOW (01628) 483099 FAX: (01628) 476843**

**Pizazz**

Flamboyance, Flair, Glamour - they're all here at Pizazz!

Pay us a visit and see our fantastic ranges including all the sought-after labels, PLUS a range of Special Occasion Wear at competitive prices from labels such as Gina Bacconi, Michaela Louisa & Georgede. Ideal for Weddings | Cruises | Ascot

**WINTER SALE CONTINUES on our casual ranges**

27 The Parade, Bourne End Bucks SL8 5SB  
tel: 01628 522590 email: [enquiries@pizazzshop.co.uk](mailto:enquiries@pizazzshop.co.uk)



## Bygillian Gallery



Bespoke framing services, original art, unique gifts

[www.bygillian.com](http://www.bygillian.com)

7 Station Road Bourne End SL8 5QA Tel 01628 527720



### Take Your Target

Target Editor, Debra Aspinall, spent New Year in Las Vegas with her son David and his wife Helen, and younger son Adam and girlfriend Rebecca.

She managed to drag Adam away from the roulette tables long enough to get this photo of him at the Las Vegas sign. Don't be fooled by the blue sky, it was freezing cold.

The family had a great time there. "It's basically Disneyland for adults," says Debra. "Every hotel or casino is bigger and better than the next."

"New Year's Eve was a blast with fireworks from skyscrapers all along The Strip welcoming in 2015."



## PT CARPENTRY

and Household Services

Design • Repair • Rebuild - just ask

### Paul Thomas

Mobile : 07905 221991 E mail : [ptcarpentry@live.co.uk](mailto:ptcarpentry@live.co.uk)

**Carpentry - Plumbing - Plastering - Decorating - Gardening**  
(sub contract electrical services)

Carpentry design and repairs, bespoke furniture made to order, erecting sheds, stables, fencing, trellis, garden gates, assembling flat pack furniture, hanging doors, changing locks & door furniture, fitting security locks to doors and windows, boarding out lofts & installing loft ladders, plumbing in sinks, installing washing machines, kitchen and bathroom fitting, changing taps, tiling, grouting, putting up shelves, pictures, mirrors & curtain poles, clearing and repairing gutters, landscaping, general garden tidying, pressure washing patios, project management.....

the list goes on and on!!.....

*"To do the jobs that you don't have time to do !"*

Mobile : 07905 221991 E mail : [ptcarpentry@live.co.uk](mailto:ptcarpentry@live.co.uk)

## Solicitors Buchanans

Divorce | Conveyancing | Commercial | Employment |  
Wills | Probate | Litigation | Elderly Client

Buchanans Solicitors can assist with all the above and more.

Buchanans Solicitors is a friendly, modern law firm which offers a broad range of services and aims to deliver clear advice promptly and cost effectively.

Call us for a free, no obligations chat on 01628 810 707

Swains House, Swains Lane, Flackwell Heath, Buckinghamshire HP10 9BN  
[office@buchanansonline.com](mailto:office@buchanansonline.com) [www.buchanansonline.com](http://www.buchanansonline.com)

Authorised and regulated by the Solicitors Regulation Authority (No. 034463169)



**You can't have everything - where would you put it?**



## Fancy a day out by coach?

Join Jamie and the gang... picking up at a location near you!

### Snowdrops at Painswick

Wednesday 18 February

Get ready for spring at these

Rococo Gardens with an unusual maze and fabulous buildings.

A real treat of a day out!

£25.50 includes admission

### Daffodils and village event at Thriplow

Sunday 22 March

Step back in time at the Daffodil Weekend with village fete, open gardens, rural entertainments and all on traffic free lanes and paths. Thriplow in Cambridgeshire is an authentic village community with everyone involved in this event.

£24 includes admission

### CORNWALL IN JUNE IS PERFECT

Priory Lodge Hotel in Newquay

6 NIGHTS: Sun 21 to Saturday 27 June

Excursions every day £385.00

For details of these and other trips contact Jamie on 07714 583215 or email [jamiiefyfe2@gmail.com](mailto:jamiiefyfe2@gmail.com)



### Brittons Solicitors

28 The Parade  
Bourne End  
Bucks SL8 5SY

Friendly, helpful, professional, efficient and cost effective legal service.

We look after you.

Telephone: 01628 533350

Fax: 01628 533119

Email: [lex@brittonsol.co.uk](mailto:lex@brittonsol.co.uk)

## V J CLEANING

ALL HOUSES & BUSINESS PREMISES CLEANED TO THE HIGHEST STANDARD

REGULAR WEEKLY CLEANS OR ONE-OFF DEEP CLEANS.

WE CAN WORK HOURS TO SUIT YOU, HOWEVER BIG OR SMALL.

FOR A FREE, NO OBLIGATION, QUOTATION

CALL US NOW ON  
07869 127508 OR  
01628 527891



## Gardening man with the best tips

Every year members of the Inner Wheel organise an Afternoon Tea just before Christmas as a major charity fundraiser. While the delicious tea is special their choice of speaker always makes it memorable. And every year they gather well over 100 into the community centre for the event.

Faced with beautifully decorated tea tables and all the smiling faces broadcaster and author Steve Brookes certainly made the afternoon memorable. His passion for gardening went back to his childhood spent with his Gramps in the allotment at a time before well-packaged solutions to garden pests were easily available from the nearest garden centre.

Gramps knew how to deal with garden pests, how household rubbish provided nutrients for certain plants and why laddered stockings (in those days) were the solution to tying up unruly plants. Gramps recycled well



before the word came into general use. And Steve's love for Gramps started him off on a career which took him through growing, into plant research and eventually into broadcasting and writing.

Laughs galore when Steve showed ladies a use for the shower cap you get in hotels "and it's great when you get a new one every day!" he said. More recycling tips followed then from using vacuum cleaner fluff to chopped up banana skins, used tea bags to muscle rub spray. Who knew that cats hate the smell? As the minutes sped by he had to slow up, but said that he had put all the tips into a little book which might be a good present for a gardener. The queue to buy copies confirmed that while the ladies served tea.

Our photos show Steve Brookes (centre) with Inner Wheel's Diana Hyde (left) and Elaine Morris. Now you see him... Now you don't, but is that a shower cap propagator?

## PART-TIME JOB VACANCY AT THE COMMUNITY CENTRE

Part time Office Assistant required for community centre office  
\* Flexible hours

\* Computer skills essential including admin and accounting

Send a CV with brief details of previous employment and computer systems used to: [secretary@bebca.org.uk](mailto:secretary@bebca.org.uk)

(or address on page 2)

## bourne end dental



Our exceptional levels of expertise and our team approach to caring means Bourn End Dental has been at the forefront of general practice for more than 20 years.

- ❖ Considerate dentistry in a caring environment
- ❖ Superb clinicians with a family focus
- ❖ Early morning & Saturday appointments
- ❖ Specialists in gum therapy, root canal treatment & braces
- ❖ Cosmetic dentistry & whitening
- ❖ Dental implants & facial aesthetics

Protecting, renewing and enhancing the lifelong dental care of our patients

**01628 523 353**

Station Road, Bourne End, Bucks, SL8 5QF



[www.bourneendental.co.uk](http://www.bourneendental.co.uk)





I-r the Tombola girls – Annabel with Cooper, Anne, Hayley with Hughie

## Kindle theft... then a true act of kindness

Brook House Vets on The Parade experienced the worst and best of human behaviour at Christmas.

Every year this vets surgery supports Bourne End Fun Night with a display of reptiles, hot chocolate and a competition for the children. In front of their surgery they run a tombola stall with free mulled wine with all the proceeds donated to Bourne End Community Association fun night charities.

Prizes are collected throughout the year in readiness for the event, and they ask their suppliers and reps to contribute a little something (chocolates, wine etc). Last year their pet food supplier said if they bought £1,000 of pet food they would give the practice a Kindle Fire.

The £1,000 was above their usual buy, but practice manager Anne Wright explained that they went ahead on the basis that the Kindle Fire would be a great "star prize" for the tombola.

The stall was busy as usual on the night and some time during the first 45 minutes the Kindle Fire went missing.

"It was snatched from under our noses, while we were serving," says Anne. "We were very upset that someone would do such a thing on an evening that is full of fun and Christmas cheer. Fortunately, we had a box of chocolates in the practice which we able to substitute for the Kindle Fire, so that whoever picked that tombola number would not miss out on a prize."

However, the following week an envelope was handed in at the community centre with the message to pass it on to Brook House Vets.

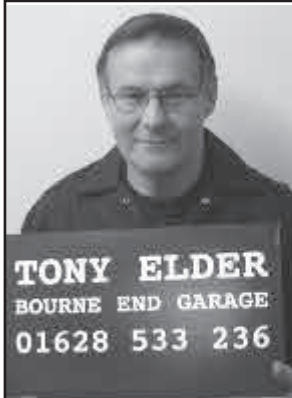
"I couldn't believe what I saw when I opened it. It contained £200 in cash and a note from Santa, Rudolph and the Elves saying 'We heard that someone stole your best prize at the Vets village tombola. That is so sad. We decided to put something back to thank you and the village for a great evening. Here is £200 for you to replace the prize or donate to charity.'"

Anne (pictured on the front page of *Target* with the letter) tried to find out who the kind benefactors were to thank them, but to no avail.

The proceeds for the Fun Night had already been passed on to the centre, so this extra donation was given to the Day Centre in Wakeman Road.

Debbie Heyes, the Day Centre manager, was thrilled by the donation from Brook House and knew exactly what she wanted to do with the money. She went out and bought new table mats, china, cutlery, glasses and table clothes for the centre's clients (see photo).

So a big thank you to the kind person, or people, who managed to turn this into a good news story.



**TONY ELDER**  
BOURNE END GARAGE  
01628 533 236

**DO YOU KNOW THIS MAN?**

**This is the face of Tony Elder**



Tony Elder has been synonymous with car care in Bourne End for over 40 years and he has taken over Bourne End Garage, where, he says "No job is too much trouble".

Call in for a chat and speak directly to the person who will be undertaking the work.

**BOURNE END GARAGE**  
1 OAKFIELD ROAD, BOURNE END  
TEL: 01628 533 236

SERVICING • EXHAUSTS • TYRES • WELDING • MOT'S ARRANGED  
LOCAL COLLECTION BY ARRANGEMENT

**Cutting Edge**

All in one hair beauty & barber shop

49 The Green  
Wooburn Green  
HP10 0EU

t. 01628 526070  
www.cuttingedgewooburn.co.uk

**Top Knots & Tiaras**

Girls Parties Now Available

**Every once in a while - take the scenic route**





# A catch-up from Upper Thames Sailing Club by Debbie Kite

I am sure that many people are keen to find out what's been happening to our clubhouse and grounds over the last few months.

You may recall that we were lucky to get a Lottery-funded Inspired Facilities grant in 2013 to refurbish our changing rooms, but then came the floods last winter.

Our project team have worked very hard to revise the plans, and the builders started this autumn, but paused due to more concerns about flood damage to the foundations. As I write at the start of January, the builders are due to return imminently.

Sailing and social events carried on regularly throughout the autumn, although the larger A raters were safely moved away slightly earlier than usual.

A keen band of members is taking advantage of the lull to tackle grounds tasks such as cutting back overgrown shrubbery in the car park. We have also been working with our riverside landowning neighbours to cut back withies on the upstream riverbanks to improve wind conditions.

Looking ahead, our Open Day will be on Sunday April 19, and we look forward to welcoming new members and visitors for a trip on the river and 'Tea by The Thames'.

A training programme is in place to follow promptly after Open Day, as well as many other sailing and power boat courses for adults and children that will take place throughout the year.

For more details please contact our membership team on 07732 405304, see our website [www.utsc.org.uk](http://www.utsc.org.uk), or ask any member if you are passing by.

One more news item – there is an opportunity for a new caterer and/or caretaker at the club. If anyone local is interested in finding out more, please email Donna on [housesec@utsc.org.uk](mailto:housesec@utsc.org.uk) for more information.

*(Our photo top left was taken at last year's Open Day)*



**Interested in sailing?**  
**Make a note of our Open Day on Sunday April 19th for a chance to try river sailing and enjoy "Tea by the Thames".**  
**New families and individuals welcome for sailing or social membership.**  
**Call in or see [www.utsc.org.uk](http://www.utsc.org.uk)**



**UPPER THAMES SAILING CLUB**  
 Riverside, Bourne End, Bucks, SL8 5RF

Access via the towpath from Bourne End Marina, or via Coldmoorholme Lane

Your local Drycleaners at your service

**Regular Discounts**

Follow us on Facebook and Twitter, or sign up on our website for regular promotions and discounts.



Pop into your local Blue Dragon at 62 The Parade, Bourne End for a full range of drycleaning and domestic laundry services, including our **super speedy 2 hour and same day drycleaning options**. We can even take care of your repairs and alterations.

Branches also at: Beaconsfield, Gerrards Cross, Great Missenden and Ickenham.

Your Bourne End Blue Dragon

62 The Parade,  
 Bourne End, Bucks.  
 SL8 5SB  
 Tel: 01628 522358

Opening Hours

Monday - Friday:  
 8.00am to 5.30pm  
 Saturday:  
 8.00am to 4.00pm  
 Sunday: Closed

It pays to use Blue Dragon



**K Rowe & Son**

**Roofing & Guttering**  
**uPVC Fascias & Soffits**

Mob 07949 901100 Tel 01628 851185  
[www.kroweandson-roofing.co.uk](http://www.kroweandson-roofing.co.uk)





# SCAN Sports Club Activities and News

## ABOUT BOURNE END JUNIOR SPORTS CLUB

Founded in 1970 Bourne End Junior Sports Club is a registered charity run by volunteers to provide sport and recreation for children and young people, with many being highly qualified in their own sport. The New Road Sports Hall was built in 1982 and later extended to include a climbing wall and a club room. The multi-sport centre is used extensively by club members and members of the whole community. Please visit our website for more information [www.bejsc.co.uk](http://www.bejsc.co.uk)

## DANNY BURROUGHS TESTIMONIAL FOOTBALL MATCH - BEJSC U12S



As some of you may be aware, Danny Burroughs, a really super lad and star player with BEJSC U12s, was sadly diagnosed in August with a brain tumour and cyst. He has since been receiving intensive Proton Beam Therapy in America over a ten week period. His football coaches thought it would be a great idea for all his team mates, and their parents, to show total support for Danny and his family by arranging a

dedicated event to raise funds for their special appeal. The event took place on Saturday December 13 in beautiful sunshine at Wooburn Park.

The one hour Testimonial Match consisted of two teams from the U12s group made up from 22 current and previous members with a suggested donation of £10 per player. A special 'Man of the Match Trophy' was presented to Ralph Smith, by Danny's dad Andy. The match was followed by a 'Lads & Dads' football match for all ages - great fun. This was followed by a Penalty Shoot-Out Competition, a Crossbar Challenge, and finally the raffle which included a signed Reading Football Club shirt. A splendid day was enjoyed by everyone.

Huge thanks go to all the volunteers, helpers and organisers who worked so hard to make the event a success.

Thanks to the incredible support and generosity of all concerned. They raised the staggering sum of £1,257.72 ..... Yes, that's one thousand, two hundred and fifty seven pounds and seventy two pence!!! A generous local person has since kindly rounded this up to £1,500.

A magnificent tribute to Danny and his family to show just how much we are all thinking of them and really care. His family hope, in due course, to donate part of the overall fund proceeds to the wonderful London Hospitals who have helped so much with Danny's treatment and care. Among those truly generous cash donations on the day was a £50 note, but perhaps most poignant of all was the very young lad who, when putting a coin in the bucket, said "It's all my pocket money, I'm sorry, I only have a pound!"

If anyone would like to make a personal donation to Danny's Appeal Fund, you can do so via internet banking or in your bank branch, details as follows:

- Bank Account: Daniel J Burroughs
- Account Reference - Danny's Fund
- Account No: 11130663
- Sort Code: 11-05-08

Note: Remember to add your name / BEJSC for reference



Anyone wishing to donate by cheque please email [briandeacon@talktalk.net](mailto:briandeacon@talktalk.net) for contact details.

We would ask that you kindly respect the family's privacy, by submitting donations, or making contact only via the above methods.

Once again a massive thanks to everyone for a truly tremendous response!

### Update

Danny is a very brave, active and independent young lad, and with the positive support of his family and hospitals he is coping well. He will continue to receive ongoing care in the UK. It may, however, take considerable time before the full outcome of the treatment can be determined.

He and his mother set up a daily blog while in America reporting on his progress and activities entitled 'Danny in Florida'. This helped keep everyone up to date with his progress. From day one, despite his condition, he and his mum were also doing their best to enjoy the scenery and attractions of Florida while sampling the 'American Way of Life'.

We are delighted Danny and his mum were back home for Christmas with the family.

## Climbing Parties

Did you know you can book a Climbing Party at the BEJSC Sports Hall? We cater for ages 6 and over; participants need no experience as they will be guided by our instructors. Please phone for details on 01628 528110 or e-mail [office@bejsc.co.uk](mailto:office@bejsc.co.uk)

Visit our website- [www.bejsc.co.uk](http://www.bejsc.co.uk) for more information.

Classes for adults - Pilates class is on Thursday evenings from 6.30pm - 7.30pm. This gentle form of exercise is suitable for all ages. The following classes are run at the Sports Hall - Monday fitball 9:30am - 10:30am; Tuesday 4pm - 4:45pm stretch class. Please contact us on the number below for more details.

Treatment Room - for all your aches, pains, and injuries at The Sport Massage Clinic contact Wendy on 01628 528226.

**For information on clubs using our premises please contact the sports hall [www.bejsc.co.uk](http://www.bejsc.co.uk)  
email: [office@bejsc.co.uk](mailto:office@bejsc.co.uk). Chairman & Editor: Liz Hutton 01628 478168  
Manager: Pete Sherwood 01628 528110 mobile 07710 132424  
Sports Hall: (answerphone) 528110**

**Need an Electrician?**



N.I.C.E.I.C. Approved  
Portable Appliance Testing  
All electrical installations and  
rewiring undertaken.



**SELLECK  
ELECTRIC**

**ELECTRICAL CONTRACTORS  
AND TESTING SPECIALISTS**

**S.D. & R.A. Selleck  
Electrical Installations Ltd.**

3 The Green, Wooburn Green, High Wycombe,  
Buckinghamshire, HP10 0EE

**Tel: 01628 525278**

**Fax: 01628 810373**

**www.sellecks.co.uk**

**Wooburn Wheels**

Service & Repairs, Children's Bikes, Adult Cycles,  
Good Selection of Accessories.

**Tools, Appliances & Accessories**

**COMPETITIVELY PRICED:** Kettles, Irons,  
Toasters, Hair Dryers, Coffee-Makers, Shavers,  
Fryers, Lamps, Cable by the metre, Hoover Bags,  
Plugs, Lampholders etc.



**TARGET READER SERVICE**

**Useful Telephone Numbers**

**BOURNE END COMMUNITY CENTRE** 01628 522604

www.bourneendbucks.com

**POLICE** 101 **EMERGENCY** 999

**CRIMESTOPPERS** 0800 555 111

www.thamesvalley.police.uk

**POST OFFICES** www.postoffice.co.uk

Last collection time:

Bourne End, Furlong Road 5.15pm 01628 520050

Flackwell Heath 4.45pm 01628 520524

Wooburn Green 5.00pm 01628 522939

**DOCTORS' SURGERIES**

Hawthornden Surgery, Wharf Lane, Bourne End SL8 5RX

Dr S H Buxton, Dr M Wolfen, Dr T Hussain, Dr P Newman, Dr S

Abbas. Branch Surgery – 47 Straight Bit, Flackwell Heath,

Bucks HP10 9NE

**MESSAGES, VISITS & APPOINTMENTS** 01628 522864

www.hawthorndensurgery.co.uk

**HEALTH VISITORS' SERVICE** 01628 482788

Cherrymead Surgery, Drs King, Fraser, Elias, Hettiarachchi and  
Payne

Queensmead Road, Loudwater, High Wycombe HP10 9XA

**MESSAGES, VISITS & APPOINTMENTS** 01494 445150

www.cherrymeadsurgery.co.uk

Pound House Surgery, 8 The Green, Wooburn Green HP10

Dr Elizabeth Bailey, Dr Raj Thakkar, Dr Shareen Hallas,

Dr Emma Southworth, Dr Mia Murray

Also at: Orchard Surgery, Station Road, Bourne End SL8 5QE

**MESSAGES, VISITS & APPOINTMENTS** 01628 530 997

www.poundhousepractice.co.uk

**NHS** 111 or www.nhsdirect.nhs.uk

**HOSPITALS**

Amersham Hospital, Whielden Street, Amersham,

Bucks HP7 0JD

01494 434411

Wycombe Hospital, Queen Alexandra Road, High Wycombe,

Bucks HP11 2TT

01494 526161

Stoke Mandeville Hospital, Mandeville Road, Aylesbury, Bucks

HP21 8AL www.buckshealthcare.nhs.uk

01296 315000

St Mark's Hospital, 112 St Mark's Road,

Maidenhead SL6 6DU

01628 632012

Wexham Park Hospital, Wexham Street, Slough SL2 4HL

www.heatherwoodandwexham.nhs.uk

01753 633000

**BOURNE END DENTAL PRACTICE**

Station Road, Bourne End, SL8 5QF

01628 523353

Mr G Goodall, Mr S Rees, Mr A Chandrapal, Mr A Powell

Mon–Thurs 8am - 5pm. Fri 8am - 4pm. Sat 9am - 2pm

www.bourneenddental.co.uk

**ASH TREE HOUSE DENTAL SURGERY**

6 The Green, Wooburn Green HP10 0EE

01628 532932

**Peter Moys**  
**Local handyman**  
**01628 529714**

No job too large or too small  
Reasonable rates agreed prior to the work  
[peter.moys@yahoo.co.uk](mailto:peter.moys@yahoo.co.uk)

Mobile: 07502 305 894

No VAT charges on labour  
Fully insured | Free estimates

Established 1968

**BRYAN NEWELL & SON**

20 Fennels Farm Road  
Flackwell Heath



Tel: 01628 524294/525329

All Plumbing & Heating  
Specialising in Bathrooms  
Floor & Wall Tiling & Decorating

Reasonable Rates  
No job too small

**John M Wilks**  
**Heating and Plumbing**

EST 1971

Specialising in power flushing and  
cleaning of all types of domestic  
heating systems

Tel: 01628 527020

Mob: 07802 946209



[www.buckspowerflush.co.uk](http://www.buckspowerflush.co.uk)  
[info@buckspowerflush.co.uk](mailto:info@buckspowerflush.co.uk)



Instructor: Carol  
Zumba phone:  
07561329297

Suitable for all fitness levels,  
7.15- 8.15pm Tuesday evenings  
School Gym, Wye Valley School, SL8 5BW

No need to pre-book, or wait for a new term, just  
show up ready to wiggle!  
Parking is on the netball courts at the back of the  
school. Class £5 pay as you go.  
Wear comfy clothes & gym shoes; bring a drink and  
a GSOH :-)

**Community Minibus for Hire**

12 Comfortable Seats  
Reasonable Rates  
Needs own driver

Contact Sue  
at the Community Centre

**01628 522604**

**PIANO  
LESSONS**



Offered by experienced teacher  
in a Bourne End home setting

Children and adults welcome

**ROBIN SHELDON**

phone – 01628 530174

[www.piano-lessons-rtts.co.uk](http://www.piano-lessons-rtts.co.uk)



**BROOKHOUSE VETERINARY SURGERY**

61 - 63 The Parade, Bourne End SL8 5SB  
www.brookhousevet.co.uk 01628 525274

**DAY CENTRE**, Wakeman Road, Bourne End SL8 5SX

01628 527024

**WYE VALLEY VOLUNTEERS**, Portacabin, Wakeman Road  
Bourne End SL8 5SX

01628 521027

**BOURNE END LIBRARY**

Wakeman Road, Bourne End SL8 5SX 0845 2303232  
Sunday & Monday closed. Open from 9.30am, half day on  
Wednesday. Open Saturday until 2pm. Late Night on Tuesday  
www.buckscc.gov.uk/bcc/libraries/branches/bourne\_end.page

**British Rail** Passenger Information 08457 484950  
Bourne End Station, Station Road, Bourne End SL8 5QH  
www.nationalrail.co.uk

**Carousel Buses** www.carouselbuses.com 01494 533436  
**Arriva Bus Company** www.arrivabus.co.uk 0844 8004411

**North Thames Gas** Emergency (Slough) 0800 111999  
**Southern Electricity** Emergencies 08457 708090  
**Thames Water** Supply Emergencies 0800 714614

**THE SAMARITANS** 08457 909090  
THE SAMARITANS Katharine House, 17 Uxbridge Road,  
Slough, Berks SL1 1SN

**CITIZENS ADVICE BUREAU** 01628 621006

**BUCKS COUNTY COUNCIL**, County Hall, Walton Street,  
Aylesbury HP20 1UA www.buckscc.gov.uk 0845 3708090  
Highways (Transport for Bucks) 0845 2302882  
Citizens Advice Consumer Helpline 0845 4040506

**WYCOMBE DISTRICT COUNCIL**  
Queen Victoria Road, High Wycombe HP11 1BB  
www.wycombe.gov.uk 01494 461000

**SCHOOLS**  
Claytons County Combined, Wendover Road, BE, SL8 5NS  
www.claytonsprimary.ik.org 01628 525277  
Little Marlow School, School Lane, Little Marlow SL7 3SA  
www.littlemarlow.bucks.sch.uk 01628 473316  
St Paul's School, Stratford Drive, Wooburn Green HP10 0QH  
www.st-pauls.bucks.sch.uk 01628 521553  
The Meadows School, School Road, Wooburn Green  
HP10 0HF www.themeadows.ik.org 01628 521634  
Wye Valley School, New Road, Bourne End SL8 5BW  
www.wyevalley.bucks.sch.uk 01628 819022

**WOOBURN & BOURNE END PARISH COUNCIL**  
Council Offices, Town Lane, Wooburn Green HP10 0PS  
www.wooburnparish.gov.uk 01628 522827

**LITTLE MARLOW PARISH COUNCIL**  
Community Office, The Pavilion, Church Road, Little Marlow  
SL7 3RS  
www.littlemarlowparishcouncil.org.uk 01628 890301



Tailormade trips

# BEACH HOLIDAYS

honeymoons  
city breaks





As **your local Travel Counsellor** with years experience in the travel industry, I can tailor-make your perfect holiday. Available at a time to suit you, I will provide an unrivalled level of personal service, taking care of all your travel needs down to the finest detail.

Everything you book with Travel Counsellors is financially protected including hotels, low cost airlines and car rental at no extra cost.

**SUE CLARIDGE** Travel Counsellor

**T** 01628 878080 or 0845 058 7953 (local rate)  
**E** sue.claridge@travelcounsellors.com  
**W** www.travelcounsellors.co.uk/sue.claridge

Travel Counsellors ensures complete financial protection on every booking



## The Kings Head

Church Road, Little Marlow  
Tel: 01628 484407

We serve a wide variety of hot and cold food every lunchtime and evening and all day Sunday from 12 noon to 7pm, plus a good selection of cask conditioned ales and fine wines. In the wintertime there are log fires and in summer a large garden. The Pavilion function room caters for any type of party including conferences for up to 50 people. Please telephone 01628 484407 for details.

## BUCKS DISCOUNT CARPET WAREHOUSE

*"For a welcome home"*

**'Simply the best'**

For friendly, professional advice from a well established local family-run company. Visit our showroom or call us on

**01628 522716**  
**Fax 01628 529076**

- 25,000 sq m of carpets in stock
- Vinyl department with huge stocks
- Superb new rug department, fantastic selection
- 1000's of samples for selection

32 The Parade, Bourne End  
www.buckscarpets.com  
e-mail: sales@buckscarpets.com

## Joe Griffin TV AERIAL SERVICES

- Poor Reception Solved - Aerials repaired & supplied
- TVs - Hung on your wall for you. Also supplied & tuned
- Extra TV Points - For aerial and Sky (In HD!)
- Sky TV - Also Foreign Language TV

Call Marlow  
**01628 439115**

A part of  OXFORD AERIALS

## STEVE HOBSON Plumbing & Heating

Boilers, Gas Fires, Cookers,  
Servicing, Installations and  
Repairs,  
Gas Safety Landlord Certificates,  
Unvented Systems & Plumbing,  
Vaillant approved installer

Tel: 01494 524357  
Mobile: 07762 082984



## Pilates Matwork Classes

Beginners/Mixed Level and Intermediate  
One to one by Appointment

Venues - Abbotsbrook Hall and  
Upper Thames Sailing Club - Bourne End  
Little Marlow Pavilion  
Marlow Pilates Studio, High Street, Marlow  
**Call Sally on 0787 625 1967**

For fast, friendly & affordable  
taxation advice

## Tax Returns/Self Employed Accounts etc.

Home visits & evening appointments available

For a quote, ring Keith on  
01628 520426

or visit our website at

[www.randallassociates.co.uk](http://www.randallassociates.co.uk)

for further details

Keith Randall ATT

Randall Associates

30 Stratford Drive, Wooburn Green HP10 0QH

## BOURNE END ROOFING

- Re-roof our speciality
- New roofs & repairs
- Slating, tiling & leadworks
- Free estimate & 10 yr guarantee

Freephone 0800 298 3158

## DAVID HARRIS Electrician

FOR ALL YOUR DOMESTIC WIRING

Qualified & Experienced with  
Electricity Board - Part P

TELEPHONE: 01628 810349

## TO HIRE ABBOTSBROOK HALL

For Wedding Receptions  
Meetings, Dances, etc.

APPLY TO

MRS C SAMUELS  
2 RED COTTAGES

WELL END

or telephone

01628 528936

AMPLE CAR PARKING SPACE

# The Phone Man

Need a new  
telephone  
socket for  
your  
computer or  
SKY box?

Need one moved or repaired? Broadband signal  
problems? Internal wiring problems? BT not  
interested or you don't want to pay their very high  
charges? Call John on **07709 895252** or **01494  
711744** for free advice, fast service, and quality  
work. All work and materials guaranteed.

[john.summerbell@btinternet.com](mailto:john.summerbell@btinternet.com)



Kingfisher  
Building Consultancy

### Thinking of extending?

We offer:

- Full architectural design service
- Planning and building regs applications
- Extension, loft conversion & remodelling
- Party Wall surveyor services
- Building and development consultancy

For professional, friendly advice, please  
phone Bourne End (01628) 526998



**ALL THE LATEST NEWS ON  
[www.bourneendbucks.com](http://www.bourneendbucks.com)  
LOG ON NOW!**

## TRYING TO JUGGLE YOUR CHILDCARE?

**Cookham Montessori School**  
For children aged 2-5 years

We are extending our hours to offer a  
flexible package for busy mums!

Mix & match your daily requirements:

- Session start times: choose from  
8.30am, 9.00am, 9.30am or 12.30pm
- Session finish times: choose from  
12.30pm, 1.30pm, or 3.00pm

Funding available for 3 & 4 year olds

Term Time Only

Ofsted Validated

Phone 01628 529414



[www.cookhammontessori.com](http://www.cookhammontessori.com)

## EMMETT CONSTRUCTION DEVELOPMENTS LTD

Extensions – Conversions

Refurbishments – New Buildings

Private & Commercial Work Undertaken

Tel/Fax 01628 524500 e-mail: [emmett123@btconnect.com](mailto:emmett123@btconnect.com)



# LIVING LIFE TALK

Last seen playing Father Christmas's Elfin daughter at various village events, Shana Pezaro (nee Susie Pollock) will be giving the Lifestyles talk at Bourne End Library on Friday February 20 at 10.30am.

Shana (pictured here with Charlie Milne) will talk about "Living Life, with MS, to the full."

The talk will be combined with this year's MS Cake Break, usually held in May. Shana can never attend in May as she works very hard as a volunteer ambassador/campaigner for the MS Society and is particularly busy during their MS Awareness week in May.

Please, just come along and listen, have a coffee and some cake, and if you wish, make a donation to the MS Society. Cake donations welcome.



Her notebook was always within easy reach and she would sketch something that delighted her, to be part of a future painting.

For someone with such artistic talent it might have been surprising that

## Art in the library

February's Art in the Library will offer a chance to see a selection of work by the late Diana Johnson. Sadly it will also be a reminder that there will be no more pictures from Diana and this is a chance to look back and enjoy her talent.

Diana took great delight in the library extension and the hanging tracks, which were perfect for art and photographic exhibitions. She loved being involved when Wooburn Festival staged their annual events in the library and she constantly told people how lucky we were to have such a wonderful exhibition and talk room in the village.

Diana had a wide and versatile talent. She had an eye for colour, an ability to work out how to get the maximum impact from an idea and then she could put feelings on canvas in a special way. And it was a talent she loved to share with her friends in their painting group as they worked, and laughed, together.

Diana loved to knit and scores of wonderful scarves, using a variety of yarns and materials, were part of craft sessions held in conjunction with friends who were also artists.

At these events Diana delighted in showing clothes she had made for her family – original designs in gorgeous fabrics.

When Wooburn Festival decided to revive their history walk it was Diana's job to draw the route map. These were no ordinary maps – drawings of interesting houses along the way, sketches of characters who lived there as well as some of the flowers you would find in the fields and hedges. They were a work of art and well-thumbed copies are treasured by walkers.

Diana went to Spain and the resulting pictures showing the close relationship between a man and his horse are exceptional. Looking at the pictures you can almost feel the horse's soft nose and its breath. In many of the pictures the rider and horse are as one. Now you can see for yourself during February in the library.

Our pictures show Diana's multi-coloured scarves, Diana working on a walk map and the main picture is Diana working on one of her horse pictures



## Bed and Breakfast

THE OLD COTTAGE  
HEDSOR ROAD  
BOURNE END  
SL8 5EE

[www.theoldcottagebourneend.co.uk](http://www.theoldcottagebourneend.co.uk)

Tel: 01628 521348

Mobile: 07796 938369

[stacey@theoldcottagebourneend.co.uk](mailto:stacey@theoldcottagebourneend.co.uk)



61 - 63, The Parade, Bourne End  
Tel: 01628 525274

[enquiries@brookhousevet.co.uk](mailto:enquiries@brookhousevet.co.uk)

[www.brookhousevet.co.uk](http://www.brookhousevet.co.uk)

Qualified teacher with over 35 years teaching experience and a current, enhanced DBS certificate, is available in the Bourne End area for tuition in



- \* 11+
- \* Common Entrance
- \* GCSE French

References available  
Please call/text Sarah  
on **07901 276977**

## Bourne End Home Security Systems Ltd.

DOMESTIC AND COMMERCIAL

INTRUDER ALARMS

CCTV

INTERCOMS

SECURITY LIGHTING

FIRE ALARMS

- Local privately owned company
- SSAIB insurance approved
- Audible and monitored systems
- No binding contracts
- Existing systems maintained and repaired
- 20 years experience
- NACOSS NSI Gold monitoring

Your *local* security expert

For a FREE survey, contact us today!



**01628 520162**

[rogerelam@behss.co.uk](mailto:rogerelam@behss.co.uk)

[www.behss.co.uk](http://www.behss.co.uk)

Bs The Courtyard  
Furzing Road  
Bourne End  
SL8 5AU



*Happiness is no laughing matter!*





  
**ashtonopticians**  
 OPTOMETRISTS

Your independent practice in Flackwell Heath for value, style and personal service

- NHS and Private Eye Examinations
- Digital imaging and OCT scanning
- Behavioural Optometry & Vision Therapy
- Wide range of NHS, budget and top designer spectacles
- Contact Lenses
- Prescription and non prescription sunglasses
- Specialist sports eyewear
- All types of contact lenses fitted and supplied



01628 530420 [www.ashtonopticians.co.uk](http://www.ashtonopticians.co.uk)

## JACQUI JONES PERSONAL TRAINING

Fed Up Being Overweight & Unfit?

Want To Kick Start Or Improve Your Fitness Regime?

I Can Help You!

Fully Qualified Personal Trainer

For A Free Consultation  
07595223314

[www.jacquijonespersonalfitness.co.uk](http://www.jacquijonespersonalfitness.co.uk)  
[jacqui@jacquijonespersonalfitness.co.uk](mailto:jacqui@jacquijonespersonalfitness.co.uk)  
 Train at Home or at Private Gym  
 In Flackwell Heath

## fairfield framing

Bespoke picture framers  
in Bourne End



01628 529646



07976 883856

[debparrish@aol.com](mailto:debparrish@aol.com)

Established since 1998.

## JDM PLUMBING & HEATING LTD

24 New Road  
Bourne End  
Bucks SL8 5BH

Tel/Fax: 01628 529434  
Mobile: 07796 928993



**Jamie De Muynck**  
Director

come and play!

### Pre-school activity class

Teaching children to recognise letters and learn their sounds, through fun, multi-sensory games



[www.phonicsfun.co.uk](http://www.phonicsfun.co.uk)

[vicki@phonicsfun.co.uk](mailto:vicki@phonicsfun.co.uk)

07795 925 612

FOR HIRE

St Mark's Church Hall  
Station Road, Bourne End SL8 5QE  
Reasonable Rates

Enquiries: 077430 37938

# BOURNE END

ST MARK'S CHURCH HALL  
MONDAYS 6.30-8.30 PM

# YOUTH CLUB

## Calling all young people!

Are you aged between 10 and 15, looking for somewhere to hang out with your mates, play games or just chill?

## Calling all volunteers!

Are you interested in being part of a local community group? Do you have a couple of hours spare once or twice a month?

Get in touch. Get involved.  
[secretarybeyc@yahoo.co.uk](mailto:secretarybeyc@yahoo.co.uk)  
 or call Emily on 07887 924254



## St Dunstan's stairway to heaven...

St Dunstan's Church in Bourne End now has two beautiful stained glass windows created by stained glass artist, Joseph Nuttgens, from North Dean.

Parishioners have said that their vivid gradations of colour and logical geometrical shapes project a sense of energy and movement very like a 'stairway to heaven'.

Among these designs are simple crosses reflecting one of the focal elements of church belief.

The windows are particularly interesting in that they are not made in the conventional manner using larger horizontal leaded panels, but instead are composed of many much smaller pieces of glass, held together by a steel armature, with the strain spread over the leadwork. This traditional centuries old technique of silver staining has been adapted for these windows giving the glass pieces texture and markings.

Sister Winifred happily swapped her chores to be photographed with the new windows. "They're lovely" she admits "and make such a difference when you see them from inside the church".



Make Mother's Day on  
**Sunday 15 March**  
Take her out for lunch and  
we'll welcome Mum with a  
**free drink!**

Her day will be extra-special at  
The Black Lion



## The Black Lion

Mark and Kaz plan an exciting 2015 with their  
new look and improved facilities ...  
take a look at the work in progress

There's always the special Sunday three-course  
lunch with a choice of meats as well as alternative  
dishes – to suit all tastes – and all at a great price.  
Traditional daily fare menu with a specials board to  
add variety for regulars.  
As usual there's a good range of quality beers, a wine  
list featuring bin-ends at retail prices and a  
welcoming open fire for chilly evenings.

*Not forgetting a warm welcome from pub staff –  
part of The Black Lion's tradition – over  
200 years at the heart of Well End.*

The Black Lion, Marlow Road, Well End,  
Bourne End SL8 5PL Telephone 01628 520421

**Get fit this year... join in at a local sports club!**



# Spring events and activities at Cliveden

From Mid-February the gardens of Cliveden reopen and promise of Spring will be in the air as the impressive formal gardens burst into colour the spring displays on the Parterre and in the Long Garden cprepare to bloom and drifts of pretty snowdrops, daffodils and bluebells can be seen.

Families eager to explore can pick up the free seasonal trail from the Information Centre and discover the gardens together. The storybook-themed play area will delight younger children and all ages will be challenged by the Cliveden Maze.

The grounds of Cliveden are open daily 10am - 5.30pm from February 14. National Trust membership rates stay at 2014 levels until the end of March.

## Special events and activities

### Valentine's Day

Saturday February 14, 11am-3pm

Celebrate Valentine's day as a family and create your very own love heart to hang on Cliveden's Valentine tree. Ideal for children aged 4-11 years. Child £2 (plus normal admission charges). No booking required.

### Wild Wednesday

Wednesday February 18, 11am - 3pm

Take part in the first Wild Wednesday of the year. Outdoor adventures for families, every Wednesday in the local school holidays. Ideal for children aged 4 - 11years. Child £2 (plus normal admission charges). No booking required.



### Vegetable Garden Workshops

Thursday 12 and 26 March, 11am - 12.30pm

From chard to chillies, beans to brassicas, at this free workshop you'll cover everything from seed sowing under glass and outdoors, pricking out, planting and much more.

Free after normal admission charges. Capacity is limited with booking advised on 0844 249 1895 to secure your space.

### Mothers' Day

Sunday 15 March, 12 - 3pm

Celebrate Mothers' Day at Cliveden by bringing your Mum to Cliveden for free and treating her to free wine tasting from midday (while stocks last). Children can also make their mum a special gift at the craft workshop. Please note, the free admission promotion cannot be redeemed at Cliveden House Hotel. Free event (plus normal admission charges - except for mums). No booking required.

For National Trust news and further information about events at Cliveden visit [www.nationaltrust.org.uk/cliveden](http://www.nationaltrust.org.uk/cliveden) or call 01628 605 069. Book event tickets via the website or call the Box Office on 0844 249 1895 (Booking charges apply). Photo courtesy of National Trust Images (photographer John Millar)

## The retirement savings you didn't know you had



### Your home can play an important role in helping you achieve your plans

Do you have retirement plans you hope to achieve? Or parents whose retirement income is not enough? Have you any home improvements to make or family members you want to support financially? Perhaps a dream destination to visit?

In 2013 more than 19,000 homeowners accessed an average of £60,000 of their property value<sup>1</sup> to spend as needed while remaining the full owner of their home and with no monthly repayments to make.

This is a Lifetime mortgage. To understand the features and risks ask for a personalised illustration.

A Lifetime mortgage is a form of equity release which enables homeowners aged 55 and over to access their property wealth.

Equity release can affect your entitlement to state benefits and grants.

A typical advice fee of £1,295 is only payable upon completion of a plan. Equity release may affect the size of your estate over time.

Source 1: The Telegraph, 2014

### Other uses for equity release:

- Supplement your income
- Boost your business
- Pay off a mortgage on any property

### Features:

- Release equity tax free from your property
- Retain 100% home ownership
- Option to guarantee an inheritance
- No monthly payments unless chosen
- Never owe more than the value of your home

### Request more information:

**ATTFIELD JAMES**  
Financial Management Ltd  
Swan House, 4-6 Market Street,  
Maidenhead,  
Berkshire SL6 8AB.  
Telephone 01628 623600  
Fax 01628 773770  
e-mail: [abattfield@aol.com](mailto:abattfield@aol.com)  
[www.attfieldjamesfinancialmanagement.co.uk](http://www.attfieldjamesfinancialmanagement.co.uk)





## YOUR LETTERS

### What a mess...

I was walking through the Wakeman Road car park the other day and suddenly noticed what a total mess Wycombe District Council have made of our village centre. Most people I talk to are not happy about the new payment system as it takes much longer to pay, there is only one machine instead of two and all the posts and signage are unsightly. Was it really necessary for them to waste all that time and money? I can't believe it.

Add to that the ever-full waste paper and bottle containers, the rubbish which accumulates around the day centre and library and the result is an unsightly mess. Now that we have plenty of residential recycling capacity, I would have thought the banks in Wakeman Road were superfluous to requirements. Since they are always full, perhaps they are being used by businesses, which would otherwise have to pay for trade waste at the tip.

What do people think?

**John Marshall**  
Claytons Meadow

### A great night

Thank you so much to everyone involved with the organization of Bourne End's Fun Night in December. I understand and appreciate what a really hard job this must be to organise and put on.

As always it was a great event with a good variety of activities and stalls to suit all. Without all the volunteers and stall holders this would be yet another part of Bourne End history and tradition to go down the plug hole!

Everybody should try their best to get involved in local events to keep our village a thriving, happy place to live. Some things are well supported and some are not, but at least some people try to make an effort and volunteer to organise new things alongside older traditions.

We are really lucky to live in such a lovely place.

**Laura Manning**  
Fisherman's Way

### Thanks

Now that [my husband] John and I have left the Bourne End, Beaconsfield & District Branch RNLI committee, we would like to give our sincere thanks, through *Target*, to the many, many volunteers who have been such wonderful help and support to us, and particularly during the 15 years I was branch chairman.

The public has been so generous, with offers of help always willingly given.

Since we first joined the committee in 1977, we have made many good friends from our supporters and we also remember with love and gratitude those who are no longer with us.

We trust our volunteers will go on supporting the new chairman, Mike Prager, and his committee long into the future.

We thank you all for your support, and not least *Target* which has been so helpful over the years.

**Diana Spokes BEM**  
Honorary Life President  
RNLI Bourne End, Beaconsfield & District Branch

## Railway investigation

Some of the members of the Marlow & District Railway Society are trying to find out more about an internal railway which appears to have linked Jackson's Mill in Furlong Road with Prince's Mill at Cores End and Hedsor Mill.

It appeared on large scale pre-war Ordnance Survey maps, running roughly along the east bank of the River Wye but little else appears to be known.

Even the Industrial Railway Society is unable to add more, it's listed in their handbook for the area in a section on 'Non-locomotive Systems' indicating it was man or horse powered, but that may be simply because they don't know.

Often there is info in the handbooks that had been derived from sales listings of second-hand track and rolling stock, but presumably nobody has reported anything. This was probably a narrow gauge line and made no connection with the main

railway or the sidings serving Jackson's.

It is possible that there may be some retired Jackson's employees who read *Target* and can recall this operation and shed some light on it so would it be possible to find space in a forthcoming issue to make an appeal?

I can be contacted either by email at [mikewalker@solgarth.eclipse.co.uk](mailto:mikewalker@solgarth.eclipse.co.uk) or on 01628 483899.

**Mike Walker**  
Marlow & District Railway Society

**We love to hear from readers. Please send your letters to the editor at the address or email on page 2.**

**ALL THE LATEST NEWS ON**  
[www.bourneendbucks.com](http://www.bourneendbucks.com)

**LOG ON NOW!**



**Sapphire**

**Elegant dresses**

**For hire and sale:**

- Evening
- Prom
- Parties
- Awards Dinners
- Cruises

**For sale only:**

- Mother of the Bride/Groom
- Bridesmaids
- Special Occasion

*Co-ordinating hats, hand-pieces, shoes, bags and jewellery*

Open 9.30 am - 5.30 pm,  
Monday - Saturday

**Out of hours by appointment:**  
Sunday

11-13 Wycombe Lane, Woolham Green, HP13 8HU  
Tel: 01628 530 516 - [www.sapphiredresses.co.uk](http://www.sapphiredresses.co.uk)



Kelsey Rose



John Charles

11-13 Wycombe Lane, Woolham Green, HP13 8HU  
Tel: 01628 530 516 - [www.sapphiredresses.co.uk](http://www.sapphiredresses.co.uk)

Please follow us on Twitter @sapphiredresses  
Please like us on Facebook sapphiredresses

# The Bounty

Cockmarsh, Bourne End

[www.thebountypub.com](http://www.thebountypub.com)

Call 01628 520056 for directions



**Winter:**  
Open weekends for drinks and food.

**Summer:**  
Open daily from noon. Food until 8pm, drinks until 11pm



# Bourne End Electrical



All your electrical needs catered for

Quick and efficient service

Test & Certification  
New Fuse Boards  
Upgrades & Repairs  
Interior & Exterior wiring  
Outside Security Lights  
Switches & Outlets

Ring Stephen on  
01628 850968  
07790 546975

advancedentalservices.co.uk

Bourne End

01628 525223

Remember the smart approach to tooth care:

- i) minimal sugar intake
- ii) effective cleaning
- iii) optimal fluoride use

## advance dental services

\* 1 Station Court Station Road SL8 5YP



### RELIABLE PROFESSIONAL SERVICE FOR:

- RODENTS • COCKROACHES • ANTS • FLEAS
- BED BUGS • FLY KILLER UNIT • BIRD CONTROL
- WOODLICE • GREY SQUIRREL • WASPS & BEES
- FLY CONTROL • FLY SCREENS

### EMERGENCY CALL OUT

DOMESTIC & COMMERCIAL • FREE SURVEY • FULLY INSURED

Don't be bugged ring us now

23 Years Experience  
Unmarked Vehicles

# 01628 525025



## Secondary Maths Tutor

Qualified Maths teacher in Bourne End for one to one help.

- Common Entrance
- Key Stage 3 and GCSE
- AS/A Level

T: 01628 531521

E: [kath.acres@spadeoakfarm.com](mailto:kath.acres@spadeoakfarm.com)  
[www.spadeoakfarm.com/Tutors](http://www.spadeoakfarm.com/Tutors)



Some-bunny loves you!

# FREE Prize Draw

## Bourne End Cards & Gifts Look out for changes this year!

We are determined to make your shopping experience with us even better, with new ranges of cards and gifts, seasonal free prize draws and much more.

So, on behalf of all your local shopkeepers....

Please... Keep it local!

New for 2015, we will be running a FREE prize draw for Valentine's Day and Mother's Day.

Get one raffle ticket with every Valentine's Day card you buy, to win a huge Jellycat Bashful Bunny!

(worth £50!)

Valentine's Day is  
Saturday 14th  
February  
Mother's Day is  
Sunday 15th March

Your card shop needs you!!



Thank you to everyone who bought the Bourne End christmas card - we sold 175 cards raising £50 for the Community Centre.

Well done Barrie Penfold for the stunning image of Penny's Corner!

19 The Parade, Bourne End, Bucks SL8 5SB Tel: 01628 521509 Email: [tony@bowlerwright.co.uk](mailto:tony@bowlerwright.co.uk)



## Wooburn WI By Sue Pressney

Doreen Frith, our longest-serving member, stood down from our committee in December. Doreen has been a pillar of strength to our WI, and any thanks from us seem quite inadequate.

In January Kathy Peacock, our new president, made a first-class job of chairing her first meeting, and we are delighted to give her our full support.

In February we look forward to hearing John Dunsterville talk about his experiences as a jazz guitarist, and at our birthday meeting in March, our secretary Janet Smith will be giving advice about first aid in the home. As Janet is a trained nurse she knows her subject.

We meet in St Mary's Church Hall (off Wycombe Lane) on the first Wednesday in the month at 2.15pm, and you are most welcome to join us.

## Glory Mills Bowls Club By John Palfreyman & Peter Chalkley

John Dunsterville's show at the Christmas party was superb, with music from the 50s to the present day and many amusing anecdotes.

We had a very successful season outdoors last season and are enjoying a good season of indoor bowling during the winter, and are looking to recruit new members. Contact Shirley Churn on 01494 673859 or email [shirley.churn@btinternet.com](mailto:shirley.churn@btinternet.com). The club offers free coaching and low membership fees.

## Inner Wheel Club By Elaine Morris

Our annual Christmas Tea Party for charity on Friday December 5 was a huge success. Presided over by Club President Diana Hyde we raised £905 for SERV (better known as the 'Blood Bikers' who voluntarily collect and deliver blood, organs, and premature baby milk to support the NHS).

Our guest speaker, radio presenter Steve Brooks, told us how to eradicate the pests in our gardens – without having to buy expensive manmade products!

January 10 marks the day each year when Inner Wheel UK first began 90 years ago. We are only just 30 years old – and we celebrate that day by helping out in the community usually at TVAP the special needs adventure playground in Taplow.

## Little Marlow & Well End WI By Kathleen Radford

Our December meeting was held in the community centre with guests from other local groups. Patricial Purcell talked of her experiences over many years as an opera singer, breaking into song now and then with a still powerful voice. A week later, our

Christmas lunch at Winter Hill golf club was a very enjoyable occasion.

On January 6 members raised ideas for events in the coming year and suggested outings that might prove interesting. We also had a Bring and Buy.

Visitors are welcome to our meetings, for details contact 01628 481343.

## Bourne End WI By Kath Acres

At our January meeting Bourne End WI member Jill Harden inspired us all to try harder to arrange flowers in a creative way. She won the prestigious City & Guilds 2014 Lion Awards Creative Craftsperson of the Year Award and is exceedingly talented. Her top tips were: make sure your vases are sparkling clean before you start (she bleaches hers), throw away any floral foam that has dried out (it will never hold water again), dunk the stems of wilting flowers in boiling water (for a minute) to shock them into life.

We are looking forward to more inspiration on February 5 when Hugh Grainger will talk about Wild, Wild Women. He will explain how a group of ordinary girls finished up as pirates, highwaymen, criminal masterminds and pony express riders.

We are arranging a trip to London to see the new hit musical 'Women on the verge of a nervous breakdown' on March 11. If you would like to join us (coach departs Bourne End at 9.30am and returns around 7pm) please email [bourneendwi@yahoo.com](mailto:bourneendwi@yahoo.com) (tickets are £45 including the coach). We will have some spare seats on the coach if you just fancy a shopping or sight-seeing trip (£15 return).

Bourne End WI meets on the first Thursday of the month at St Dunstan's Church hall at 7.30pm and visitors are welcome.

Our Craft and Chat Group meets on the third Tuesday of the month in Bourne End Library at 1.30pm and all are welcome to craft or chat. The Spade Oak Heart tree is now adorned with all-weather crocheted snowflakes.

Please email [bourneendwi@yahoo.com](mailto:bourneendwi@yahoo.com) for further information.

## Bourne End (Afternoon) WI By Julie Wardell

Our inaugural year has been a steep learning curve for the committee, all new to the WI movement. It has been fun and rather hectic at times but our increasingly large membership has been very supportive and encouraging.

We ended the year with mince pies and mulled wine with amusing ditties narrated by one of our own members, Sue Roberts.

The New Year brought a varied programme, with a January talk entitled From Crinolines to Bustles. Visits are planned to the cinema for the Royal Opera House ballet and a coach trip to Wisley.

As the WI celebrates its centenary, exciting

events are coming up which members will be invited to attend. It's a great time to join your local group. To find out more call Sue Berrido on 07776 713701 or email Julie Wardell at [bewiafternoon@gmail.com](mailto:bewiafternoon@gmail.com).

We meet on the second Monday of each month at St Dunstan's Church hall at 2pm and visitors are very welcome.

## Bourne End & Cookham Rotary Club By Peter Yeeles

The local Rotary Club is one of a 'family' of clubs consisting of adults of both sexes and with younger members joining 'Interact' (18-35), 'Rotaract' and 'Rotakids' all having separate activities. Rotary has been busy with activities raising significant funds for worthwhile charities both here and internationally, with such programmes as eliminating polio worldwide. We continue to meet on Tuesdays alternating lunch and dinner meetings, in the pavilion behind the Kings Head in Little Marlow.

Our Father Christmas sleigh was dusted down and toured parts of Bourne End, Flackwell Heath, Wooburn and Cookham, spreading good cheer and supporting charitable good causes with coin collections.

You may see us about in our recruitment drive but you are also welcome to visit our website, or telephone our secretary who can book you into a meeting. We cover a wide range of interests. Recently Interact members met the gold medal paralympian rower Naomi Riches, and Rotary will be meeting Cookham Parish Councillors and hearing about Bekonscot Model Village from Brian Newman Smith. There will also be social events with bowling, dining and a variety of activities. Email [colinrookard@gmail.com](mailto:colinrookard@gmail.com) or ring 01628 631517.

## Cookham Bridge Rotary Club By Roger Gould

Our New Year Auction gave members and their families the opportunity to sell off any unwanted Christmas gifts and help raise funds for good causes. Our January speaker Nick Slope gave an interesting historical talk on The Battle of Jutland. The month ended with a Burns Night fellowship dinner.

In February and March evenings will include visiting speakers on topics such as the Postal History and a Carbon Coach. A visit to another rotary club has been organised and a celebratory dinner with partners.

Members of Cookham Bridge Rotary Club meet on Wednesday evenings at Winter Hill Golf Club to help raise funds for good causes while enjoying good company with likeminded people. Visit [www.rotary-ribi.org/clubs/homepage.php?ClubID=1612](http://www.rotary-ribi.org/clubs/homepage.php?ClubID=1612) or email Roger Gould at [cookhamrotary@gmail.com](mailto:cookhamrotary@gmail.com)

# Bookkeeping firm enjoys success

When Sylvia Bournhill set up her bookkeeping business back in 2002 she lost her dining table. "It was always covered with files, folders and cashbooks," she remembers. Now, looking back, she admits that it was a small sacrifice to make for what has become a very successful Bourne End business, Another Answer, employing local staff and

now well established in offices on Royalty Parade (above Hunt and Nash).

Business success was acknowledged in 2014 when Another Answer was short-listed for a Luca Award. These are the Oscars of the bookkeeping world, recognising outstanding achievement in the profession.

It was a short list of three for the title of Small Bookkeeping Practice of the Year. "I was very surprised and then thrilled for all of us" Sylvia laughs at the thought, "and we had a great evening out in London at the awards ceremony."

Another Answer regularly supports *Target* (see page 5) by advertising the range of bookkeeping services the company can offer: "We have a number of regular local clients and we do the accounts of local traders and tax returns for any number of people who find it too difficult to cope with filing their own."

As business expanded Sylvia found her extra part time staff as mums chatted outside St Paul's School in Stratford Drive. With children of the same age working around the dining table was fine as the children played. Katey Prosser lives in Cores End Road and usually walks to work. Alisa Schroeder lives in Wooburn Green. They are all members of the Institute of Certified Bookkeepers and manage to work around family commitments.



The Another Answer team: Sylvia (front) with Alisa (left) and Katey

Sylvia is a believer in keeping things simple and works with clients through an online accountancy system which means that all the paperwork is submitted and there is no need to sit around for hours in a client's office. She is a member of the Association of Accounting Technicians, or AAT, which is an accountancy organisation with more than 133,000 members worldwide.

Thinking back Sylvia says that it has been hard work, but very satisfying. Then she smiled "Recently a lady wanted us to do her accounts and when I asked her why she had chosen us she said that she liked the colour of our advertisement. What can you say to that!"



## Cinderella - the perfect panto mix

The 'fabulous' Hardup daughters, a prince who longs to be an ordinary guy and a faithful family servant with lofty ambitions combine to make Forum Players panto Cinderella a real treat at the centre theatre.

Tradition blends with the age-old story about the Baron's daughter, her Prince Charming and the two obstacles determined to thwart the fairy godmother's plans.

Congratulations all round for the live music, the costumes, the set and the very confident stage débuts from some new young Forum members.

Tracey Huxley and Ros Bartlett are terrific as sisters Gorgon and Zola, Ana Meechan makes charming Prince Charming while Georgia Barker-Wright is a delightful Cinderella.

The show has its final performances on January 31, at 2.30pm and 6.30pm.

Do catch it if you can...



## BARTLETT TREE EXPERTS

SCIENTIFIC TREE CARE SINCE 1907

**A Complete and Comprehensive Tree Care Service since 1907**

Tree & Shrub Pruning | Planting | Tree Removal  
Woodland Management | Health & Safety Reports  
Disease & Insect Control

For a free consultation please contact your local arborist:

01494 677 889

beaconsfield@bartlettuk.com

www.bartlett.com

## The Pentagon Clinic

Osteopathy and Physiotherapy

Stella Halpin BSc.(Ost.)  
Brenda Case BA(hons), DO DPO  
David Turner B.Ost.  
Morag Bowie M.C.S.P. M.H.P.C.  
Sally Checkley M.C.S.P. M.H.P.C.

Wharf Business Centre  
Wharf Lane, Bourne End  
Bucks SL8 5RU  
Tel: 01628 533200  
Fax: 01628 527455

email: [info@pentagonclinic.co.uk](mailto:info@pentagonclinic.co.uk)

[www.pentagonclinic.co.uk](http://www.pentagonclinic.co.uk)

Tel: 01628 533200

Following the closure of The Redgrave Clinic, we have opened a new practice The Pentagon Clinic.

Our highly qualified and established Clinical Team continue to provide Osteopathy, Physiotherapy, Cranial Osteopathy, Pilates and Sports Massage for all ages. We all have a wealth of experience in the assessment and treatment of a wide range of musculoskeletal conditions.

## TECS 19 Ltd

### Pest Control

- Wasps
- Rodents
- Rabbits

- Insects
- Foxes
- Birds

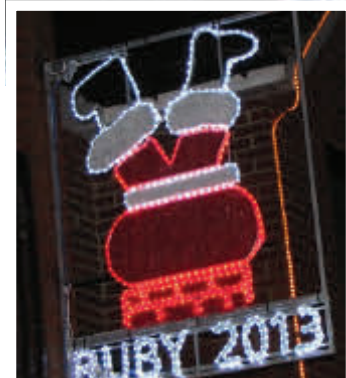
Please Call

Tel: 07979 808809

tecs19ltd@gmail.com



# Keep the lights twinkling...



Did you enjoy the Christmas lights in Bourne End this festive season?

We'll maybe you would like to consider contributing towards the Christmas Light Fund which is in place to ensure our children and our children's children will enjoy them too?

Nick Pink, who runs Bourne End Motor Company, but has worked tirelessly in recent years to ensure the Christmas lights keep twinkling in our village, is asking for contributions to the fund.

He recently set up a giving site on Facebook (now closed), placed collection buckets in key spots in the village and managed to secure a contribution towards the costs from Wycombe District Council.

He says: "This is still only a small part of what we will need to overhaul the lights with new ones.

"Readers will also be pleased to know that Tesco have agreed to pay a sum of money in view of the inconvenience they caused with the entrance saga!

"So please people of Bourne End please support this cause and Bourne End will continue to be the envy of other villages when it comes to lights next year.

"The population of Bourne End is just over 5,000, working on an average of three persons per household, if every household donated just £1 we should be able to raise between £1,000 and £1,500."

*Anyone who would like to donate can send or drop in a cheque to Nick's showroom on Wakeman Road. Please make it payable to Bourne End Fun Night. Or email Nick at np@bemc.co.uk and he will give you the bank details to make an online transfer.*

## CLEANER OR CARER

- Over 10 yrs experience
  - Current CRB
  - References provided
- Phone Tina 07581435021

## Alexander Jolliffe Upholstery

Website: [www.ajurc.com](http://www.ajurc.com)  
Email: [alex.djolliffe@gmail.com](mailto:alex.djolliffe@gmail.com)  
Mobile: 0795 101 2222

## Powerline HOME SERVICES



Electrical work

Plumbing work



Contact:  
Peter Druce 07748 836359

**NO JOB TOO SMALL/FULLY INSURED**

# BASL BUILDING & MAINTENANCE LTD



Mathew & Paul Billingham - Seventh generation builders  
t: 01628 298185 w: [www.BASLbuilding.co.uk](http://www.BASLbuilding.co.uk) e: Mathew or Paul@BASLbuilding.co.uk

*We undertake any and all work to your home to a high standard and cost effectively*

## CHRIS GATES

Decoration &  
Repair Services

- \*Top quality interior and exterior decorating
- \* Interior carpentry, plastering, coving and tiling
- \*Repair and restoration of exterior woodwork
- \*Box sash window repair and refurbishment
- \*All types of glazing repairs
- \*Fully insured with references available on request

For advice and a free estimate

Tel: 01628 529698

Mob: 07802 457274

Bourne End



## Bourne End Community Market

On Valentine's Day (February 14), Bourne End Community & Craft Market will celebrate four years of providing the community with a wonderful range of homemade goods and services. The market, held every second Saturday of the month at Bourne End Library, has achieved much success over these four years, and looks forward to exciting new ventures as it enters a fifth year.

The market has grown in strength to 20 regular stallholders, with an equal number of seasonal/occasional members. The library's Jackson Room is now too small to accommodate everyone so it has expanded into the Lantern Room — do make sure to visit both rooms on your next visit. Pitches will also operate outside on the forecourts of the library and adjacent day centre...except in severe weather conditions.

There are lots of new products for customers to enjoy. Rosie's Munch Basket, whose gluten and dairy-free products have been a staple since our opening, has introduced vegan and diabetic lines

and is focussing on providing healthier options for all customers.

If you are looking for a decadent gift for your sweetheart this Valentine's Day, two newcomers to the market, Chocolates by The Lass in the Apron and John's Couture Treats, have beautiful displays of handcrafted, all-natural treats.

Alexandra, the Lass in the Apron, will be selling romantic chocolate hearts, hand-sculpted chocolate roses, and boxes of champagne and rose-raspberry truffles, while John has colourful French macarons and marshmallows to tempt you.

As we anticipate the approach of Spring, another new stall, Carolyn's Plants, will be there with all manner of plants and advice for a successful year of gardening.

We are also delighted to announce that live entertainment is now supplied by our talented resident pianist, Don McDermott (pictured), who serenades customers. His repertoire includes many songs famously crooned by Frank Sinatra and Dean Martin and he creates a very happy atmosphere. If you want to linger at the market longer to enjoy the music and chat with friends, you can purchase freshly made filter coffee from

Georgie's stall, while tea and hot chocolate are available at the library's front desk.

To keep the under-12 set amused while you enjoy your shopping, the market is introducing a Treasure Trail challenge. Children can go around the stalls to solve the clues and win a prize for a full set of correct answers.

The monthly tombola continues to support local charities - having donated over £2,000 to various causes and groups so far. This month's proceeds will go to support Bourne End resident Isla Thomas, who has entered the London

Marathon to raise funds for the Motor Neurone Disease Association.

The market will be held in the Jackson and Lantern rooms of the library, from 10am to 1pm on Valentine's Day, February 14. If you have any questions, contact Rosie on 07989 716635 or email [rosieohagan@me.com](mailto:rosieohagan@me.com).

Also, as we grow and expand, we'd love to hear from individuals or businesses willing to sponsor banners and/or signs to display in prominent positions around the local area. If you are interested, contact Rosie at the details above. Thank you and see you at the market!

## Bourne End Library

By Inka D'Agostino, library manager

We have some exciting events in store for you this year.

January kicked off with an excellent talk on the Secret Wartime Activities at Hughenden Manor.

February's Lifestyle Club on Friday February 20 welcomes Shana Pezaro, volunteer ambassador and campaigner for MS Society. Shana will give a talk on "Living Life with MS to the Full". This will be combined with the MS Cake Break so please join us and support this very worthy cause. The event starts at 10.30am.

On Friday March 27 at 10.30am Lifestyle Club's speaker will be Mike Grundy who will talk about "The Dramatic Art of the London Underground".

We are also pleased to announce that our next evening event will take place on Wednesday February 25 when we present for your visual curiosity and auditory delight an Evening of Smoke and Mirrors (tales of adventures from the film and television industry). The evening will start off with a drinks reception at 7pm followed by the event at 7.30pm. Tickets at £10 can be obtained from the library.



### MORE THAN JUST A SPORTS STORE!

THE SHOP FOR THE VERY BEST QUALITY AND KEENEST PRICES IN SPORT CLOTHING AND EQUIPMENT. IT PAYS TO DEAL WITH THE SPECIALIST.

PRINTED AND EMBROIDERED TEAMWEAR & CORPORATE WEAR A SPECIALITY

RACKET RE-STRINGING DONE ON THE PREMISES.

37/39 THE PARADE,  
BOURNE END  
BUCKS  
SL8 5SB



Tel: 01628 819242  
[sales@hawkinsport.co.uk](mailto:sales@hawkinsport.co.uk)

[www.hawkinsport.co.uk](http://www.hawkinsport.co.uk)

### Regular Activities:

**Bounce and Rhyme:** Every Thursday term time. Toddlers 10am to 10.30am, babies 11am to 11.30am.

**Community Market:** Every second Saturday of the month.

**Italian Classes: Beginners,** Tuesday 10am to 11am. Intermediate: Tuesday 11.30am to 1pm.

**Yoga classes:** Every Tuesday 6pm to 7.30pm.

**Tai-chi classes:** Every Wednesday 8pm to 9pm.

**Sing Your Pain Away:** Every Thursday 6pm to 7pm.

**Meditation:** First Tuesday of the month, 1pm to 2pm, third Thursday of the month 8pm to 9.30pm.

**Pranic Healing Sessions:** Last Saturday of the month 10am to 12 midday.

Our community rooms, which are fully equipped with AV equipment, are for hire at very reasonable rates. If you are looking for a meeting room or planning an event please contact us.

For any of the events and activities above or for further information about the library please contact us on [lib-boe@buckscc.gov.uk](mailto:lib-boe@buckscc.gov.uk), tel: 0845 2303232 or visit our Facebook page: Friends of Bourne End Library



# JG dance

Jeannine Greville Dance Academies  
& Theatre College



2½ - 18 years, Girls & Boys  
Beginner classes in Ballet,  
Jazz, Tap & Acrobatics  
**FREE TRIAL LESSON**

RAD, ISTD & LAMDA  
Classes up to Advanced 2  
Twice Yearly  
Theatre Performances

Call: **01491 572000**

email: [info@jgdance.co.uk](mailto:info@jgdance.co.uk)

**BOURNE END - Wednesdays after School** [WWW.JGDANCE.CO.UK](http://WWW.JGDANCE.CO.UK)



**QUALIFIED  
CARPENTER/HANDYMAN**



- 25 years experience
- Reliable and friendly service
- All types of carpentry including:
  - Fitted kitchens
  - Doors, skirting & architraves
  - Flooring
  - Fitted wardrobes
  - General handyman/maintenance work

For a free & competitive quote call  
Paul on 07857 074523 or 01628 523314

**C.O.D.GROUNDWORKS**  
Specialists in all  
types of Groundwork

- \* Paving
- \* Patios
- \* Fencing
- \* Block Paving
- \* Drainage
- \* Driveways
- \* Patio Cleaning
- \* Concreting

*NO JOB TOO SMALL*  
FREE ESTIMATES  
Tel: 01628 528637  
Mobile: 07778 371552

**ALL THE LATEST NEWS ON**  
[www.bourneendbucks.com](http://www.bourneendbucks.com)

**LOG ON NOW!**



Painter & Decorator  
**N. W. Upward**  
2 Fisherman's Way  
Bourne End

All wall coverings hung,  
Glazing & Wall Tiling.  
Estimates Free.  
01628 528921

**YOGA WITH LINDA**

Monday morning, Tuesday evening  
and Wednesday lunchtime  
Bourne End  
Ring: Linda Jolliffe 01628 521510

**HOMEOPATHY**  
Qualified Homeopath  
**Sheila Carter**  
01628 526873

**Stacey**

**Home Visiting  
Foot Health  
Practitioner**

**A new Foot Health service  
available in your area**



*Services provided -*

- *First consultation Free*
- *Routine nail care*
- *Hard skin, Corn and Callus*
- *Verrucae treatment*
- *Ingrowing toe nails*
- *Fungal nail treatment*
- *Elderly care home visits*
- *Home Visits*
- *Local, Professional, Friendly Service*

**For further information or to  
book an appointment please  
contact Elizabeth Stacey on**

**07817 873592**

or email - [lizstacey70@gmail.com](mailto:lizstacey70@gmail.com)

Elizabeth Stacey MCFHP MAFHP

**ALLAN WISE & CO**  
**ROOFING SPECIALIST**

**Complete Roofs or Repairs**  
Large or small jobs  
Estimates FREE  
**01628 525740**

**MANKIND**  
**MENS HAIRDRESSING**

Tel: 01628 528974

15 The Parade  
Bourne End  
Bucks  
SL8 5SA



**R S HALL UPHOLSTERY**

*31 years experience*

ALL UPHOLSTERY WORK UNDERTAKEN

- \* Re-upholstery
- \* Sofas & Chairs
- \* Loose Covers
- \* Antiques
- \* Pubs & Clubs
- \* Schools
- \* Hospitals
- \* Office Chairs

Large  
Contracts  
Over 300  
fabrics  
available  
Free  
estimates

*Also fabrics at competitive prices,  
upholstery sundries and all  
sizes of foam*

Contact Bob: 07809 140988  
T: 01494 461481

E: [contact@rshallupholstery.co.uk](mailto:contact@rshallupholstery.co.uk)  
[www.rshallupholstery.co.uk](http://www.rshallupholstery.co.uk)

**MAINTENANCE &  
LANDSCAPING**

Property Maintenance, Professional  
Landscaping, Fencing,  
Specialist Patios,  
Paving, Tree Surgery, Etc.

DAVID J KIMBER, 01628 810361 07850 124241



# Past times...by Barrie Penfold

## MEMORIES OF JACKSONS MILL

Back in June 1970 one of Target's feature writers had the opportunity to interview Maurice Jackson just before his retirement as head of a great papermaking company. At that time Jacksons Mill covered acres of land behind Cores End Road, Furlong Road and Hedsor Road. Irene Turner's interview indicates how important the factory was and how local people owned their livelihood to it.

*The name of Jacksons is almost synonymous with that of Bourne End for the mill is certainly known to everyone in this area, and indeed Jackson's subsidiaries are known far and wide.*

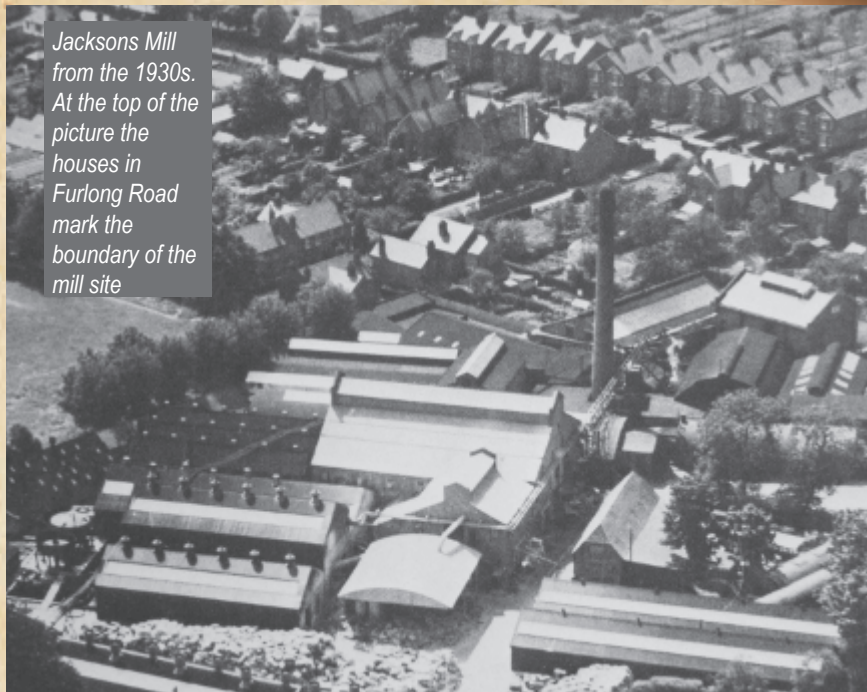
*When I visited Mr Maurice Jackson in his office, it was like taking a step back into the past. Here was a room which his father had once occupied, and his brothers also. A room where countless decisions must have been made. None of the fancy embellishments of today's factories' ultra décor, but a solid room, a room for working in.*

*A tall, well built man with a purposeful manner, Mr Maurice is generally regarded as 'Father' to the establishment. Born actually on the site, in his parent's house which once occupied part of the grounds, he was the youngest in a family of eight. Five girls and three boys. Today he is the only remaining son of this large family. An early memory is that of riding around the grounds in his father's car, the eighteenth motor-driven vehicle to be registered in Buckinghamshire. He recalls sitting on his father's knee and he remembers that instead of a steering wheel there was a bar which the driver pushed forward or pulled back.*

*As a boy he attended Mill Hill School, and from there he went to an Engineering College for three years. Eventually he joined the firm in 1924, and he recollects the time when there were three mills functioning in Bourne End under the one management. These consisted of the main mill called Gunpowder Mill, Princes Mill, which stood on the stream where the sports club is today, and Hedsor Mill, which for many years belonged to the Lunnon family, under the name of Thomas Lunnon and William Lunnon, Licensed Paper Makers. In those days a very well known organisation, as were their products which went into the making of covers for ledgers, used by all the large banks and other institutions in this country.*

*Both Princes Mill and Hedsor Mill produced almost entirely, handmade boards. Hedsor Mill was built mainly of wood, the upper part*

*Jacksons Mill from the 1930s. At the top of the picture the houses in Furlong Road mark the boundary of the mill site*



*being the drying lofts where the boards were hung up to dry in the natural air. A great deal of Hedsor Mill's machinery such as gear wheels, gear teeth and shafting were all made of wood. Since seeing Mr Jackson I have learned that he is an enthusiastic wood craftsman, which does not surprise me, as he made a special point of telling me about Hedsor Mill.*

*When Mr Maurice married, a house was built for them in the Jackson grounds, but their dwelling, like that of his parents, is no longer there. In Mr Jacksons office today hangs a remarkable photograph of his father. Taken with a Leica camera by a zealous amateur photographer employed at the mill. There are also photographs of Mr Maurice's two elder brothers. At one time all three brothers worked at the mill together.*

*On the Council of the British Papermakers and Bondmakers Federation for many years Mr Maurice is also Chairman of the Paper Trade's Safety Committee. Like his father he is a JP.*

*In September this year Mr and Mrs Jackson will be leaving Bourne End, where they have lived in the same house for 34 years, to retire to a house they have found in Frogmore, near Salcombe in Devon.*

*Mr Maurice is a reticent man and only he himself knows his feelings after being associated with Bourne End for so many years, but the pride he most obviously feels is for this family concern which will certainly remain with him.*

Forty-five years later nothing remains of this massive paper mill. Offices cover part of the site, houses have been built on what used to be the sports ground and canteen while the only industrial connection is along Wessex Road. It is hard to imagine that a major industry could have disappeared so quickly. Business needs change and there's evidence that large industrial sites were uneconomic to maintain and there was never sufficient diversification to fill the industrial space.

But memories remain. Anyone who worked there will say with pride that 'they worked at Jacksons' it's more than likely that many of their friends and family did likewise. It was truly a traditional example of 19th and 20th century industry. And now there is nothing.

While Jacksons Mill was just one of many along the valley of the River Wye through High Wycombe to where the river joins the River Thames it was one of three huge mills within a two mile stretch in our local area of Bourne End and Wooburn Green.



## OUR LOCAL CHURCHES KEEP IN TOUCH

### St Dunstan's Church

Our beautiful crib display, created by artistic members of our congregation, raised donations for Children's Relief Bethlehem, who support vulnerable families.

Our young people in Year B+ commenced preparation on January 6 for the reception of the Sacrament of Confirmation in the spring.

Our One Can Trust continues to be supported with donations of basic food and personal care items for the vulnerable and needy.

Our Lenten lunches will commence on the first Friday of Lent, February 20. Donations will be given to CAFOD (Catholic Agency for Overseas Development).

The two beautiful stained glass windows installed last autumn have transformed our Sanctuary (see page 25). Our church is open daily and visitors are welcome.



### St Mark's Parish Church

What is the meaning of life? This and other puzzling questions are explored in the ten-session informal Alpha Course which is open to anyone of any faith or none. See the posters in the church. Sign the list in church or just turn up to listen or join in.

On the next Pilgrim Course we will study the Lord's Prayer over six sessions. This also is open to anyone. Sign the list in church or just turn up at the Rectory in Fieldhead Gardens.

The usual regular activities take place in February and March which are open to all. Pathway is an informal all-age service with kids' songs and hymns on the second Sunday in the month at 10.30am and is popular with families. On all other Sundays it is Holy Communion at 10.30am while Penguins, our young church, meet in the hall. Drop in to the weekly Monday Cafe in the Hall from 10am until midday. This is a chance to relax and chat with local residents.

The Tuesday Puppet Theatre welcomes 8-year-olds-plus in the hall at 5pm. Puffins, the Mothers and Toddlers group, enjoy meeting in the hall on Wednesdays at 10am. Coffee is served after a quiet and reflective Communion at 9.45am each Thursday. The Monthly Sale is on the third Saturday of the month from 10am until midday. Here you can browse stalls of nearly new clothes and enjoy a cup of tea or coffee.

Contact the Rector, The rev Janet Binns, on 01628 523046, and the Administrator, Maura Carr, on 01628 530181 or visit [www.achurchnearyou.com](http://www.achurchnearyou.com).

### St Paul's Church and St Mary's Church Wooburn

St Paul's Church Sunday Club will soon be thinking about Easter activities. All children are welcome to join in the fun from 9.30am

each Sunday.

Our bellringers are always looking for new recruits to help ring our eight bells. If interested, contact our parish office or website.

St Paul's Church Hall is kept busy each week with our popular Toddlers group on Tuesdays at 9.30am and Tots Praise on Fridays at 9.45am. St Mary's hosts our Friday short Communion service at midday, followed by a shared lunch.

The church hall and garden in Town Lane, Wooburn are available for bookings through the office on 01628 525512, by e-mail [stpaulswooburnparishoffice@gmail.com](mailto:stpaulswooburnparishoffice@gmail.com), and via the web-site [www.stpaulswooburn.org](http://www.stpaulswooburn.org).

### The Community Church

"Enjoy your kids while they are young" is a well-known maxim. The implication is: you'd better enjoy them when they are young because you won't enjoy them when they are older. We disagree. At the Community Church we have some truly fantastic older children and young adults who are a joy to be with.

Spending quality time with your children and giving them the input so that they can make their own decisions about life and faith as they grow up is fundamental to them getting the best out of life. So we provide loads of opportunities for parents and children to put good foundations in place. Here are some that are taking place at the Community Church at our chapel and hall on Wooburn Green and you can come to any or all of them:

Little Steps toddler group is 10am to 11.30am every Thursday during term time (costs £1 per family).

Dads' Little Steps toddler group is 10am to 11.30am on the first Saturday every month. (Bacon buttie and coffee provided, £2)

A six-week Parenting Course covers a wide range of parenting skills. For details contact [joanne.maynard2@btinternet.com](mailto:joanne.maynard2@btinternet.com), tel 07960 228837

Funday Sunday is a time for parents and primary school-aged children to enjoy craft activities, Bible stories, songs, and a sandwich tea, on selected Sundays, 3.30pm to 5pm, free of charge. See our website or contact Jo Maynard for dates.

Mothers Day service on Sunday March 15 is at The Meadows School at 10.30am, refreshments served from 10am.

On top of that we have something for children of all ages (tots to tottering) at our Sunday morning services. They are at the Chapel on the Green on February 8 and March 8, and at The Meadows School on the other Sundays in February and March at 10.30am (refreshments from 10am). A Community Church welcome awaits you. [www.wooburngreen.org](http://www.wooburngreen.org).

### Cores End United Reformed Church

The Christmas Joy concert was a huge success with wonderful performances, the church was full to capacity and over £500 raised for Christian Aid.

In Joint Pastorate with Trinity High Wycombe, Cores End is getting ready to



welcome our new Minister, Terry Hinks, who is being inducted at Trinity Church on April 25. Terry will take his first service at Cores End on Sunday April 26.

Apologies for an error in the last edition of Target which stated that Pancake Day would be a month too late. In fact, Dorothy Aikens will be hosting her annual Pancake Day event at Fair Winds, Grange Drive on Tuesday February 17 from 10am to 12.30pm. Everyone welcome with all proceeds to Cores End Churchyard Fund.

Link Up Club has a full programme, with interesting speakers, craft and games. The cost including tea/coffee and biscuits is just £1 per week, and there is a friendly welcome for everyone. See [www.coresendurc.com](http://www.coresendurc.com).



### St Nicholas' Church Hedsor

After a very busy Christmas period we are often left with the question, is there more to life than this? The Alpha Course provides answers to this and other questions over 10 thought-provoking weekly sessions. The course, a joint initiative with St Mark's, is open to anyone interested in exploring the Christian faith in a fun, friendly, non-threatening atmosphere.

We will also embark on the second of our Pilgrim courses, see website for further information. This term we will be taking a detailed look at the Lord's Prayer. A quiet period at St Nicholas' leads to Lent and Easter when we hope to see lots of families on Mothering Sunday March 15 when children give flowers to their mums at the 9am service.

Each week our morning service commences at 9am, you are very welcome to join us with your family. Pebbles, our Young Church group, meet each week in the vestry. Pathway, our 45-minute all-age family service, takes place on the 2nd Sunday of the month, with kids' action songs, hymns and an interactive talk.

We are accompanied by our choir on the 4th Sunday of the month at a Sung Communion service.

Hedsor Church Theatre Group will see the show Gypsy in London in April – all are welcome.

[www.parishesofhedsorandbourneend.co.uk](http://www.parishesofhedsorandbourneend.co.uk)



### St John the Baptist Little Marlow

Our Ash Wednesday Service on February 18 will be held at All Saints' Marlow at 8pm. We are hoping to run a series of talks during Holy Week with a guest speaker including the three-hour service on Good Friday. Please check our new website [www.4u-team.org](http://www.4u-team.org) for details nearer the time.

We have planned a Quiz Night with supper and cash bar on Friday March 20 at the Abbotsbrook Hall. Tickets from the churchwarden 01628 481806.







**centreTalks**

**Stewart Linford**

**Making Limited Edition Chairs**



**Bourne End Community Centre  
19:30 on Thursday 12<sup>th</sup> February**

**£5 (£4 for Ass'n members) on the door or  
£4 (£3 for members) in advance from the  
Centre Office or the Centre Bar  
[www.bourneendbucks.com/centreTalks](http://www.bourneendbucks.com/centreTalks)**



**CentreTalks**

12 Mar - see posters

9 Apr - The Magic Circle

14 May - Air Traffic Control

11 Jun - Who Do You Think You  
Are - The TV Program

9 Jul - Codes and Cryptography  
from Caesar to the Enigma

13 Aug - no talk

10 Sep - How to Start Tracing  
Your Family History

**Bourne End Community Centre  
19:30 on 2<sup>nd</sup> Thursday of the month**

**£5 (£4 for Ass'n members) on the door or  
£4 (£3 for members) in advance from the  
Centre Office or the Centre Bar  
[www.bourneendbucks.com/centreTalks](http://www.bourneendbucks.com/centreTalks)**

## Pubs (and Ken) packs 'em in



Heralded as a talk about disappearing local pubs, it proved to be a whistle-stop tour of local villages, their pubs and a huge amount of local history thrown in for good measure.

When Ken Townsend talks you know you'll get the facts and this time it was daughter, Karen, who helped Ken with the facts.



"Did you know there were 44 pubs locally?" she asked the audience. "And did you know that the average person drank two pints of gin per week?" That statistic went way back, but the sad fact is that only 14 pubs remain.



Together Ken and daughter had prepared an illustrated talk that dealt with the pubs, confessing that they

couldn't find a few of them. "There was the Waterman's Arms and we think it was close to the river in the Fieldhead Gardens area, but we can find no mention of it anywhere," Ken admitted.

Ken had postcards dating back to the early 1900s and, with great delight, was able to show the only one that had been franked as being from 'Bone End' the early name for Bourne End.

He talked about the boxer who owned the Walnut Tree, the gangsters who hung out at the Red Lion (Ken said it was the Krays, the Lawrence family said it was the Messina Brothers) and there was a special mention for the man with a gold-plated Lagonda.

You needed an interval to catch your breath and look at Pat Lawrence's drawings of local pubs. He took orders for copies with all profits going to the community association. Thank you Pat. Then it was

**FLOWER  
DEMONSTRATION**

**Bourne End Flower Arranging**  
at Bourne End Community Centre

**Tuesday February 12<sup>th</sup>**  
Jenny Clarke will be  
on the theme of

**Tuesday 3 March**  
Nadira Burki will be  
on the theme of D

Visitors  
Welcome  
£5 per person

Lucky raffle  
winners take  
home the displays  
created during  
the evening

back on the pub tour into Wooburn Town, Wood  
had a postcard showing The Feathers opposite  
- it seems the French did that. Pubs in Cookham  
Little Marlow with the final stop up Blind Lane

It was a wonderful evening with a great speaker  
months ahead. See the list opposite and make  
centretalks.

*Our pictures show Ken checking out a local map  
co-hosted the talk, and a Bourne End franked one*

## BOURNE END (BUCKS) COMMUNITY ASSOCIATION Membership

<b>INDIVIDUAL MEMBERSHIP</b> over 18 years of age	£5
<b>JUNIOR MEMBERSHIP</b> under 18 years of age	£5
<b>FAMILY MEMBERSHIP</b> husband/wife/children of school age	£10
<b>ASSOCIATE MEMBERSHIP</b> (outside the area of benefit)	£5
<b>ASSOCIATE FAMILY MEMBERSHIP</b> (outside the area of benefit)	£10
<b>SENIOR CITIZEN MEMBERSHIP</b>	£3
<b>SENIOR CITIZEN FAMILY MEMBERSHIP</b>	£4
<b>LIFE MEMBERSHIP</b> husband/wife/children of school age	£60
<b>SINGLE LIFE MEMBERSHIP</b>	£30

Annual subscriptions are payable on or after 1 January each year.

Family membership carries one vote. Associate and Junior Membership carry no vote.

Area of Benefit - includes Bourne End, Cores End, Hedsor, Northern Woods, Little Marlow, Well End, Wooburn and Wooburn Green.



## CLUB NOTICES

### Management Society

Community Centre

7.30pm at 8pm  
demonstrate  
Bamboozle

7.30pm at 8pm  
demonstrate  
cream Weaver



burn Green and up to Hedsor. Ken  
Cliveden with the stamp on the front  
am, two pubs in both Well End and  
at the Green Dragon. Phew.  
ker and there's more to come in the  
a point to come along to the

Report by Barrie Penfold

ap, Ken's daughter, Karen, who  
a postcard

**MAGPIES  
NEST  
ANTIQUES  
&  
COLLECTORS  
FAIR**

Bourne End Community Centre  
Wakeman Road,  
Bourne End SL8 5SX

9.30am to 3.30pm

Sundays February 8,  
March 1 and April 12

*Antiques, collectables,  
jewellery, books etc  
Refreshments available  
all day*

All enquiries contact Ray  
on 01628 5525386  
Goods also purchased

### Darts

We are now halfway through the Winter League programme and are sitting in fourth position in the league table. However, it could have been considerably worse.

When I arrived late for the match against the Wooburn Working Men's Club we were losing 2 against 4 and were on the point of losing yet another game, which left us trailing 2 against 5 with only four more games to play. I cannot say that my furrowed brows had anything to do with it, but from that moment on things took a turn for the better.

One, two and three wins on the trot left the match tied at 5-all with only one game left to play. Could we possibly win? Of course we could! Up to the oche stepped he of the distinctive spectacles, young Buddy. A nerveless display brought the final score to 6 against 5. The good guys won again.

In the minor division of the Challenge Cup we have reached the semi-final, which will be played over two legs, home and away. We have high hopes.

### Chess

The Chess Congress takes place on Sunday March 29. It is celebrating 40 years since its inception by George Parker, Fred Day and others in 1976. It is an all-day, rapid-play event which attracts competitors from clubs all over the south-east. It is divided into divisions of similar playing strengths so if you're interested in taking part, contact David Langford on 01628 520065 or pick up a form from the Community Centre notice board.

The first team are currently doing well in both the Bucks and the Berkshire leagues while the second and third teams are struggling to make any impact in their respective divisions.

## Membership costs and application form

### APPLICATION FORM

Cut out and send or hand to:

The Manager, Bourne End Community Centre,  
Wakeman Road, Bourne End, Bucks SL8 5SX

NAME.....

ADDRESS.....

.....  
Email address: .....

TYPE OF MEMBERSHIP..... AMOUNT PAID.....

## Target Quiz



Number 84

Fill in your answers to this quiz set by Penny Walsh, and hand in the form at the community centre (along with your £1 entry fee) for a chance of winning Penny's special mystery prize. All money raised will go to the centre.

As this edition covers March, for this quiz each answer starts with MAR

- 1 Race of 26 miles 385 yards.
- 2 Inventor of wireless telegraphy.
- 3 Stout rodent.
- 4 Citrus fruits make this jam.
- 5 Large oceanic fish.
- 6 Aromatic herb.
- 7 Seaside grass.
- 8 Kangaroos & wallabies are these.
- 9 Sweet, fortified wine.
- 10 Wetland, swamp, fen.
- 11 The Roman god of war.
- 12 Nearby town.
- 13 Firework used as distress signal.
- 14 Old German currency.
- 15 Relating to the sea.
- 16 Hemp plant.
- 17 Blank edge of page in a book.
- 18 Shrove Tuesday in, for example, Rio de Janeiro.
- 19 To walk in a military manner.
- 20 To plunder or raid.

The closing date is Friday March 6

Name:.....

Address:.....

.....

Tel:.....

### ANSWERS TO TARGET QUIZ No 83

- 1 panic 2 potent 3 panda 4 panacea
- 5 potage 6 pandemonium 7 pancreas
- 8 Potsdam 9 potholes 10 potassium
- 11 poteen 12 panama 13 pandit 14 panettone
- 15 pane 16 pansy
- 17 potentilla 18 pangolins 19 pandemic
- 20 pants. The winner was Mrs Y Gillman, Goddington Road, Bourne End



## OUR GROUP MEMBERS KEEP IN TOUCH

### **1st Wooburn Scout Group**

Our 18 Scouts who entered the Grimsdyke Hike all finished. The senior teams hiked for eight hours the first day carrying full kit and camped overnight. They then hiked for another five hours. The senior team came 6th out of 16 teams. The junior event was an orienteering race against the clock - teams have to stick together and it's all about leadership and map reading accuracy. Well done for an excellent result.

The group is currently fundraising for a new floor in the Scout Hut in Watery Lane. For the Curry Night on Friday February 27 they would be grateful for raffle prize donations, please contact [caroline.hardaker@gmail.com](mailto:caroline.hardaker@gmail.com).

The Falcon Pub in Wooburn Moor put on a Christmas pantomime for their customers using the 1st Wooburn Scout HQ, kindly donating all the takings on the door for our Scout 'floor fund', £527. A big thank you to Kate, landlady and pantomime organiser.

For information about the group see [wooburn.wix.com/wooburnscouts](http://wooburn.wix.com/wooburnscouts).

### **Marlow Maidenhead Passengers Association**

Work at Maidenhead Station in preparation for Crossrail has had a significant impact on the station. The temporary platform canopies did not appear as expected as the original installation plan had to be revised. Once the old canopies were removed, Network Rail's contractors discovered ground conditions would not support the planned new canopy foundations and the design had to be revised.

Following intensive overnight work, new foundations for the permanent canopies have now been built and once the temporary canopy design is approved, installation will start.

FGW are working with Network Rail's contractors to make sure that they are installed in a phased manner that maintains the maximum amount of platform coverage possible, and the temporary covering will be replaced with the permanent canopy.

FGW have apologised for the inconvenience that this is causing customers and are displaying a poster at stations by way of explanation.

The revised plan for Maidenhead Station development is still being designed, and MMPA is pressing for issue of the new plans as soon as possible.

Crossrail has issued information regarding work to be carried out locally including: January 12 to February 27, Monday-Sunday (08:00-18:00): Vegetation Clearance along embankments.

January 19 to February 20, Sunday-Thursday (22:15-05:15) and Saturday (22:15-08:30): Installation of piled foundations.

February 2 to April 20, Sunday-Thursday (22:15-05:15) and Saturday (22:15-08:30): Installation of overhead line structures.

If you use public transport in the Maidenhead/ Marlow area (including Bourne End and Taplow), are you a member of the association? The more members, the greater the pressure that can be exerted on train and bus operators and local authorities to improve services and rectify problems.

### **Wooburn Park Tennis Club**

The new clubhouse is now up and being enjoyed by members. There are still jobs to do inside, not least a floor covering to replace the plastic sheeting. The raised decking area is a good viewing point to enjoy matches.

Sunday morning social play has been well supported and the astro turf courts allow play even when covered in frost. It does mean that tennis can take place all year round. For information about the club, email: [wpltc@sky.com](mailto:wpltc@sky.com).

### **Bourne End Twinning Association**

The committee have started to make plans for our visit to Octeville at the end of May when we will travel by coach and Eurotunnel to continue our friendships and in some cases forge new ones.

This is always a most enjoyable weekend as the French go to a great deal of trouble to ensure we receive a huge welcome with a plentiful supply of activities to keep us occupied. Most of the French hosts speak English so those of us who do not speak French do not have a problem communicating. In any case it is amazing what can be done with a dictionary and sign language.

In between our exchange of visits, we have a busy programme of events throughout the year, such as a dance, a quiz and our autumn dinner, all open to non-members. In between we have a couple of events which are only open to members, such as our summer garden party, and a coffee and galette afternoon. The galette (or cake) is served traditionally in France on the feast of the Epiphany with a tiny figurine inside, and the person who finds it becomes king or queen for the day.

Our events are always fun and there is a great camaraderie among our members, so if you think you might be interested, we would be delighted to welcome you along.

To find out more, visit [www.bebta.ukgo.com](http://www.bebta.ukgo.com) or ring 01628 521748. Membership is not expensive and we particularly encourage families to join – it's a great way to introduce your children to life in France.

### **Bourne End Video Makers**

With several internal competitions completed, we now have to produce our programme of films for the March round of the Film and Video Institutes' new knock-out competition where we will face Colchester and Potters Bar.

The year continues with a mix of internal competitions, a practical session and a Guest Speaker. The club's 50th Anniversary is in May, and we have booked the Main Hall at the Community Centre for the last Sunday in May when we plan to hold a Public Film Show with representative films from the foundation of the original cine club to the present day. More publicity on this later.

We have attracted some new members to the club but still have room for more. We welcome members of all levels of experience, particularly anyone who has script writing experience. Meetings are held in the Target Room at Bourne End Community Centre on the first and third Wednesdays of the month at 7.30pm. Enquiries to David Jarman on 01494 712441. See some of our films on our website [www.bevm.co.uk](http://www.bevm.co.uk)

### **Bourne End Horticultural Society**

On February 15 Timothy Walker from Oxford Botanic Garden will entertain us with a talk called *Bordering on Insanity*, offering ideas for creating an all-year border.

On March 19 Malcolm Brownsword will recount *Wildlife Experiences in the Upper Thames Region*.

Meetings are held at St Dunstan's Hall in Bourne End and start at 7.45 for 8pm. Everyone is most welcome. For more information about the society phone Penny Hampson on 01628 521482.

### **RNLI Bourne End and District Branch**

2014 was a transitional year in many respects. Di Spokes stood down as Chair at the AGM in April and Mike Prager took over the role. Di and John then stood down from the committee for a well-earned retirement in December having served the RNLI in this capacity since 1999, a remarkable achievement. The committee were delighted to ask Di to become Honorary Branch President, which she accepted.

We raised the grand sum of £20,475.34 over the course of the year, just £422.58 behind last year's record which we would have exceeded had it not been for a supermarket administrative error giving us one less collecting day. A sterling performance by all of our helpers and supporters. We welcome offers of help from anyone willing to help save lives at sea, a couple of days a year to help collect is all we ask.

As well as our usual house to house and supermarket collections and boxes in pubs and shops, we ran successful pub quizzes with the Old Bell at Wooburn and The Black Lion in Bourne End for which we thank both landlords. We had an RNLI speaker attend an event at the Upper Thames Sailing Club and we collected over £800 in two hours at the last premier league home game for Wasps Rugby Club prior to their move to Coventry. Three of us ran in the Marlow Santa Fun Run with Victoria White raising nearly £1,000 in sponsorship. We attended the Cookham Regatta with a class D lifeboat hauled all the way from Norfolk – the kids loved it!



# CALENDAR OF VILLAGE EVENTS

Sadly we said goodbye to Linda Casey, a stalwart supporter of the Lifeboats, and our sympathies remain with Ray and her family.

We look forward enthusiastically to the RNLI launch of its Mayday initiative to collect on the streets of the UK on May Day with new Yellow Wellie badges. We feel sure that the good people of Bourne End will be their usual generous selves to support this much loved British institution which saves lives at sea and helps prevent people from drowning on our rivers and beaches.

## Bourne End Townswomen's Guild

Having settled into our new meeting place at the Community Centre, we welcome visitors to the Target Room on the second Wednesday in the month. Meetings start at 1.30pm and on Wednesday February 11 Barrie Penfold will talk about the Mills along the River Wye. Then on Wednesday March 11 we have our AGM followed by a quiz and board games. There is time for a cuppa and some socialising before we finish around 4pm.

We are a friendly group and you will be made welcome. Ring Cynthia Houchin on 01628 527931 for more information.

## Bucks Family History Society

Anyone starting out on research into their former family members can join us in the small hall at the community centre on Tuesday February 10 when we welcome Paul Blake who will talk about The National Archive of England, Wales and the UK.

The British National Archive spans an unbroken period from the 11th century to the present day and is probably the world's most important archive collection. Paul will explain its major holdings and look at its website and catalogue, Discovery.

Then on Tuesday March 10 we welcome Kirsty Gray who will talk about Searching for Names – Challenges and Pitfalls. With increased indexing and transcription of records, looking for an individual or particular surname is much easier but creative searching is still needed. Kirsty will show you some investigative methods.

We meet on the second Tuesday each month.

Visitors are welcome to attend for a particular talk but please make a small donation to our funds.

Meetings start at 7.15pm with the speaker at 7.45pm. For more information see [www.bfhs.org.uk](http://www.bfhs.org.uk).

## Bourne End Flower Arrangement Society

On Tuesday February 3 at 8pm Jenny Clarke will demonstrate on the theme of Bamboozle.

On Tuesday March 3 at 8pm Nadira Burki will demonstrate on the theme of Dream Weaver. Meetings are held at Bourne End Community Centre (visitors welcome, £5). Lucky raffle winners take home the displays created during the evening.

## FEBRUARY

- 3 Tues Bourne End Flower Arrangement Society 8pm at the community centre. Jenny Clarke demonstrating.
- 3 Tues CentreJazz: live music from 8pm in the community centre bar. Admission £5 includes raffle.
- 5 Thurs Community Centre Bar Quiz starts at 8.30 pm. It's a £1 per person, and the winning team gets the quiz takings from the night.
- 6 Fri Bingo in the community centre. The fun starts at 2pm.
- 8 Sun Magpie's Nest antiques fair 9.30am to 3.30pm.
- 12 Thurs Centre Talks; Stewart Linford talks about making limited edition chairs, 7.30pm at the community centre. See page 36 for details.
- 13 Fri Bingo in the community centre. The fun starts at 2pm.
- 14 Sat Bourne End Community Market 10am – 1pm in the library.
- 15 Sun Table top sale at the centre 9.30am to 11.30am. Call Caroline on 01628 485642 to take part.
- 17 Tues Pancake Day at Fair Winds, Grange Drive 10am to 12.30pm No entry charge but donations towards the Cores End United Reformed Church churchyard fund very welcome
- 20 Fri Bingo in the community centre. The fun starts at 2pm.
- 20 Fri Social dance with Barbara and David at 8pm. Good dancing in friendly company.
- 21 Sat St Mark's monthly market in the church hall from 10am to midday with coffee and cakes.
- 27 Fri Bingo in the community centre. The fun starts at 2pm.
- 28 Sat Ahmadiyya Peace Dinner to bring local people together organised by the Hillingdon Ahmadiyya Muslim community. See posters at the community centre for more information.

## MARCH

- 1 Sun Magpie's Nest antiques fair 9.30am to 3.30pm.
- 3 Tues Bourne End Flower Arrangement Society 8pm at the community centre. Nadira Burki demonstrating.
- 3 Tues CentreJazz: live music from 8pm in the community centre bar. Admission £5 includes raffle.
- 5 Thurs Community Centre Bar Quiz starts at 8.30 pm. It's a £1 per person, and the winning team gets the quiz takings from the night.
- 6 Fri Bingo in the community centre. The fun starts at 2pm.
- 12 Thurs Centre Talks; 7.30pm at the community centre.
- 13 Fri Bingo in the community centre. The fun starts at 2pm.
- 14 Sat Bourne End Community Market 10am – 1pm in the Library.
- 14 Sat Slate Meadow Workshop 10am to 4.30pm at the community centre. See report page 4 and info below.
- 15 Sun Table top sale at the centre 9.30am to 11.30am. Call Caroline on 01628 485642 to take part.
- 20 Fri Bingo in the community centre. The fun starts at 2pm.
- 20 Fri Social dance with Barbara and David at 8pm. Good dancing in friendly company.
- 21 Sat St Mark's monthly market in the church hall from 10am to midday with coffee and cakes.
- 27 Fri Bingo in the community centre. The fun starts at 2pm.

*The next issue of Target will cover April and May 2015.*

*Email [editor@targetmagazine.org.uk](mailto:editor@targetmagazine.org.uk) by Monday March 2 to get your event included in the calendar.*

*The magazine will be published on Friday March 27.*

## Slate Meadow Workshop

**WDC have appointed AR Urbanism to run a workshop on Slate Meadow. Councillors and officers will be attending.**

**The all-day event will run from 10am to 4.30pm, it will allow for in-depth discussion to build on the issues already identified by concerned local residents, and will start exploring how these might be addressed**

**Slate Meadow – Saturday March 14 Community Centre, Bourne End**

**To register for this workshop please email [team@wycombe-reserve-sites.org](mailto:team@wycombe-reserve-sites.org) or contact Riccardo Bobisse on 0203 290 8979.**

**Please call into the centre and pay for your copy of Target**



Brook House Veterinary Surgery had 164 entries for their "Name the Teddy" competition with the winning name drawn out of a hat. The winner was a delighted Taylor (pictured) who named him Mylo.

