

target



VOL.55 No3
JUN/JULY 2019

£1 *Suggested price*

The Journal of Bourne End (Bucks) Community Association

Roll up! Come in! Look around!

On Saturday June 8 the community centre in Wakeman Road will be open to greet the enquiring, the curious, the regulars and especially those who have never been through the doors.

Find out what it has to offer. Everyone is welcome. Tea and coffee will be available along with lots of information on what happens at the community centre regularly. And it's a free parking day courtesy of Wooburn & Bourne End Parish Council.

Many of the clubs who meet at the centre will have someone attending to talk about what they do.

Have a look at the activities and you'll find everything from bowls through to exercise classes and then yoga and meditation. All the clubs with reports in *Target* have regular slots at the community centre and you might be tempted to join when you hear more.

If you haven't discovered the joys of the New Royalty Cinema there will be volunteers to tell you all about the monthly screening, the ice cream and the popcorn. Then you can find out about the centreTALKS and the centreJAZZ. Maybe book a ticket on the spot?

Get information about Headway – the organisation for people with brain injuries who have a day centre three times a week at the community centre.

The University of the Third Age has an array of regular group meetings in various halls. While the Women's Institute want more people for their walking netball – a fun way to keep fit. Then the Junior Sports Club have plans for their 50th anniversary in 2020.

You will be made welcome, treated as a honoured guest and shown the facilities from the May Woollerton Hall to the cosy Eghams Room, bar and other smaller meeting rooms.

Wander into the garden and sit on the secluded patio at the rear. And for a self-contained meeting space you can look around the *Target* room with its own toilets, kitchen and outside access.

Mamma Mia – here we go again is a great film packed with colour and music. And it's on that evening. Beforehand you can enjoy a barbecue with everything freshly cooked on the spot.

Don't miss the chance to check out your community centre and find out what goes on



the other side of the doors.

See you on Saturday June 8 from 9am to 1pm and again in the evening from 5pm for the barbecue and film at 7pm.

Get more info from the office on 01 628 522604 or email office@bebca.org.uk



Bourne End Mum Alexa takes on a 56-mile run for charity

See page 24

PARKING RATES ARE UP! AND THERE'S NOW A SUNDAY CHARGE

Monday - Saturday 0700 - 1900	Sunday and Bank Holidays 0700 - 1900
up to 30 mins - £0.50	£1.00
up to 1 hour - £0.75	£1.00
up to 2 hours - £1.00	£1.00
up to 3 hours - £1.25	£1.00
up to 4 hours - £1.50	£1.00
up to 5 hours - £1.75	£1.00
up to 6 hours - £2.00	£1.00
over 6 hours - £4.00	£1.00

As a motorist you should be aware of the increased rates for parking in the Wakeman Road Car Park.

Also that a straight £1 charge has been introduced for Sunday parking and you can only pay by card or via the RingGo service.

As a villager you need to be aware of these changes, particularly the Sunday charge and the payment arrangements, should you need to use this car park. Ignorance is not a defence if you get a parking ticket.

Objections have been voiced and you can keep writing and emailing the district council with your views.

Churchgoers to shoppers, regulars at the antiques market or table top sales, children's party organisers and others have asked why a community car park in a village has to be a source of revenue for the district's car parks.



Target magazine is published by Bourne End (Bucks) Community Association and distributed free to over 5,000 homes in the local area. The distribution network includes Bourne End and Wooburn Green as well as the outlying hamlets of Hedsor, Well End, Little Marlow, Cores End, Upper Bourne End, Wooburn Common, Wooburn Moor and parts of Flackwell Heath.

Bourne End (Bucks) Community Association

The Centre, Wakeman Road, Bourne End, Bucks SL8 5SX
Telephone: 01628 522604
Office Hours: Mon - Fri 9am to 4pm
Senior Administrator: Sue Ambrose
Visit: www.bourneendcommunitycentre.org.uk for current information or email office@bebca.org.uk

Editor

Debra Aspinall
Tel: 07881 558027
editor@targetmagazine.org.uk

Managing Editor & Distribution

Barrie Penfold
Tel: 01628 525415

Advertising & Production

Barrie Penfold
Tel: 01628 525415
advertising@targetmagazine.org.uk
Our advertising rate card is on www.bourneendcommunitycentre.org.uk. Click on Community Association, then Target.

Proofreading Christina Martell and Meriel Riseley

Printers

Gpex, Pinstone Way,
Gerrards Cross SL9 7BJ
Telephone: 01753 887450



All material appearing in Target is the copyright of Bourne End (Bucks) Community Association. The Editor reserves the right to select letters and reports for publication and to edit for grammar, style and length.

TARGET READER SERVICE

Useful telephone numbers and websites

POLICE 101
EMERGENCY 999
CRIMESTOPPERS 0800 555 111
www.thamesvalley.police.uk

POST OFFICES www.postoffice.co.uk
(with last collection times)
Bourne End, Furlong Road 5.15pm 01628 520050
Flackwell Heath 4.45pm 01628 520524
Wooburn Green 5pm 01628 522939

DOCTORS
Bourne End & Wooburn Green Medical Centre
Hawthornden, Wharf Lane, Bourne End SL8 5RX
The Orchard, Station Road, Bourne End SL8 5QE
Pound House, 8 The Green, Wooburn Green HP10 0EE
01628 530 997 OR 01628 522864
www.hawthorndensurgery.co.uk OR
www.poundhousepractice.co.uk
HEALTH VISITORS' SERVICE 01628 482788

Cherrymead Surgery
Queensmead Road, Loudwater HP10 9XA
MESSAGES, VISITS & APPOINTMENTS 01494 445150
www.cherrymeadsurgery.co.uk

NHS 111 or www.nhsdirect.nhs.uk

HOSPITALS
Amersham Hospital
Whielden Street, Amersham,
Bucks HP7 0JD 01494 434411
Wycombe Hospital
Queen Alexandra Road,
High Wycombe, Bucks HP11 2TT 01494 526161
Stoke Mandeville Hospital
Mandeville Road, Aylesbury, Bucks HP21 8AL
www.buckshealthcare.nhs.uk 01296 315000
St Mark's Hospital,
112 St Mark's Road,
Maidenhead SL6 6DU 01628 632012
Wexham Park Hospital,
Wexham Street, Slough SL2 4HL
www.heatherwoodandwexham.nhs.uk 01753 633000

BOURNE END DENTAL PRACTICE
Station Road, Bourne End SL8 5QF 01628 523353
www.bourneenddental.co.uk

ADVANCE DENTAL SERVICES
1 Station Court, Bourne End SL8 5YP 01628 525223
www.advancedentalservices.co.uk

ASH TREE HOUSE DENTAL SURGERY
6 The Green, Wooburn Green HP10 0EE
01628 532932

DAY CENTRE, Wakeman Road, Bourne End SL8 5SX
01628 527024

WYE VALLEY VOLUNTEERS, Portacabin, Wakeman Road Bourne End SL8 5SX
enquiries@wyevalleyvolunteers.org.uk 01628 521027

BOURNE END LIBRARY
Wakeman Road, Bourne End SL8 5SX 0845 2303232
Sunday & Monday closed. Open from 9.30am, half day on Wednesday. Open Saturday until 2pm. Late Night on Tuesday
www.buckscc.gov.uk/bcc/libraries/branches/bourne_end

British Rail Passenger Information 08457 484950
Bourne End Station, Station Road, Bourne End SL8 5QH www.nationalrail.co.uk

Carousel Buses www.carouselbuses.co.uk
01494 450151

Arriva Bus Company www.arrivabus.co.uk
0844 8004411

THE SAMARITANS
(free number even from mobiles. Texts also accepted)
116123

Katharine House, 17 Uxbridge Road,
Slough, Berks SL1 1SN

BUCKS COUNTY COUNCIL, County Hall, Walton Street, Aylesbury HP20 1UA www.buckscc.gov.uk
0845 3708090
Highways (Transport for Bucks) 01296 382416
Consumer's Helpline 03454 040506

WYCOMBE DISTRICT COUNCIL
Queen Victoria Road, High Wycombe HP11 1BB
www.wycombe.gov.uk 01494 461000

WOOBURN & BOURNE END PARISH COUNCIL
Council Offices, Town Lane, Wooburn Green HP10 0PS
www.wooburnparish.gov.uk 01628 522827

LITTLE MARLOW PARISH COUNCIL
Community Office, The Pavilion, Church Road, Little Marlow SL7 3RS
www.littlemarlowparishcouncil.org.uk 01628 890301

SCHOOLS
Claytons County Combined, Wendover Road,
Bourne End SL8 5NS
www.claytonsp.org.uk 01628 525277
Little Marlow School, School Lane,
Little Marlow SL7 3SA
www.littlemarlow.bucks.sch.uk 01628 473316
St Paul's School, Stratford Drive,
Wooburn Green HP10 0QH
www.st-pauls.bucks.sch.uk 01628 521553
Wooburn Green Primary School, School Road,
Wooburn Green HP10 0HF
www.wooburngreenprimary.co.uk 01628 521634
Bourne End Academy, New Road, Bourne End SL8 5BW
www.bea.bucks.sch.uk 01628 819022

TARGET COMPETITION (page 40)

Terms and conditions: Entrants must be aged 18 or over, only one entry per person, no cash alternative to this prize, our decision is final, no correspondence can be entered into. The meal must be booked in advance and is subject to availability. Drinks not included.



WOOBURN RESIDENTS ASSOCIATION

By Margaret Amos
Secretary to the Association

Wooburn Fête returns to The Green on Saturday June 15 for its annual fun, frolics, music and barbecue, showcasing many of the fabulous community groups and businesses we are lucky enough to have on our doorstep. The fête will run from midday until 4pm and includes school children dancing and singing; the Sappers singers, Dave Kimber on his DJ decks, First Responders giving first aid demos plus the Scouts providing entertainment and games.

Entrance is free and there is something for every member of the family – young and old. Do come along and support this traditional summer fête – all monies raised go to community groups or to support the work of Wooburn Residents' Association.

If you would like to help please contact caroline@meechanomics.co.uk – you will be made very welcome.

We applaud local resident, Karen Savage, who organised a litter pick in April (see page 14). We all know that it should not be necessary, but... Have you seen what the litter pickers collected? We plan to discuss litter at our next meeting.

On Monday July 8, at 8pm we will be having a short meeting followed by Mike Dewey, manager of SWOP (Sharing Wycombe's Old Photographs) giving a talk entitled *A History of Wooburn in old photographs*. All are very welcome to join us over a drink in The Wooburn Club. We know there is always much interest in local history.

You may have noticed that there is a splendid new unobtrusive fence around the children's play area in Wooburn Park. This will keep our children safe from the river, road and the dogs (and their mess) in the park. Wooburn Residents' Association (Caroline Meechan in particular) was instrumental in putting the case to the parish council and undertaking a

survey. Our thanks go to the parish council for the fence and also for agreeing at a recent meeting that Wooburn Park is not the place for Bourne End Junior Sports Club's proposed swimming pool. We wish the club all the best in finding a suitable site.

For the latest news visit our website: www.wooburnresidents.org and follow us on Facebook at <https://www.facebook.com/wooburnresidents> For a copy of Wooburn News – email Margaret Amos at margaretamos123@gmail.com Contact can made with the Association through the website.

Martin Adams

VEHICLE SERVICING REPAIRS & MOTs

Tel: 01628 850000 www.mavs.co.uk

- General car repairs and maintenance
- Free courtesy car available
- Tyres, exhausts and batteries supplied and fitted
- Latest diagnostic equipment for all makes of vehicle
- Air conditioning service available
- 30 Years Experience

01628 850000

email: info@mavs.co.uk

Alexander House, Wessex Industrial Estate, Bourne End

Hedsor Fair Saturday June 29

Meet at ... Hedsor Fair

[For St Nicholas and St Marks Benefice]

Relax and enjoy our unique garden fete by the Thames.



Lunches
Cream Teas,
Boat Rides,
Pony Rides,
Live Band,
Raffle,
Stalls, Games.

Sat 29th June



12 - 4:30
Adults £2
Children Free
Free Parking
at
Orchard Dene
Riversdale
Satnav SL8 5EB

Just six years ago Bessie the Shetland pony (pictured) was unwanted and found abandoned in North London.

Thankfully Bessie is now loved and part of a happy family and, along with a stable mate, will be coming along to Hedsor Fair to give children pony rides.

In the stunningly beautiful location of Orchard Dene, on Riversdale, beside the River Thames, this popular annual fair will also offer fantastic boat rides, barbecue lunches, teas and homemade cakes also strawberries and cream (the strawberries being freshly picked in the morning).

Along with the wacky family games and a chance to buy that rare book you've been searching for it's a great way to spend the afternoon.

Meet at Hedsor Fair, Saturday June 29, midday to 4.30pm.



PLEASE NOTE: Jim Penfold's Bourne End Residents' Association report will return in the August/September issue with his updates on local matters of concern.



CHATELWORTH LIMITED



CONSTRUCTION
All aspects of general building works:
*Extensions/Alterations *Renovations *Carpentry/Joinery
*Brickwork/Paving *Plastering *Commercial & Domestic

FULL DECORATING SERVICES
*Painting *Internal/External *Wallpapering *Commercial & Domestic

GENERAL
*Roofing/Slating/Felting *General Maintenance

PURPOSE MADE JOINERY
*All aspects of purpose-made joinery from our own in-house workshop

MONARCH windows, doors & conservatories
also *Plastic Fascia *Barge Boards & Cladding *Guttering
A first class service at very competitive prices, call now for a no obligation quotation

*A members of the Federation of Master Builders and
FMB (Masterbond) Warranty Scheme*

Chattelworth Works,
95a Queens Road,
High Wycombe, Bucks HP13 6AH

Tel/Fax 01494 461544

BRIDGE PLAYER'S BIDDING QUIZ

Bourne End Bridge Club has compiled some of the best quiz questions which have appeared in *English Bridge*. Try this one set by *Julian Pottage*:

You are West. What should you bid on the given auction at pairs?

♠A982	W	N	E	S
♥K7432				1NT Pass
♦3			?	
♣943				

Julian Pottage gives his answer on page 12

English Bridge is published by the English Bridge Union.



Bridge latest news:

Bourne End Bridge Club announced their plans to launch a competition in the Spring hoping to encourage bridge players to start playing at the club level.

With details appearing in *Target* they hoped this would appeal to the many bridge players in the local area who are familiar with duplicate bridge, understand a bidding system and want to progress to being a duplicate club bridge player.

Starting at the beginning of April the club were delighted to welcome 12 players who had responded to their appeal. They had two further players joining in May.

Target is delighted to hear about the response to the competition and we feature another bridge quiz and solution in this issue – just to keep the challenge and interest in the game going forward.

If you want to know more about Bourne End Bridge Club contact bobaperrin@outlook.com or visit the website on www.bridgewebs.com/bournend

CRAIG UPWARD
Professional carpet
cleaning

Local and affordable
Fully insured

www.craigscarpetcleaning.co.uk
wwwcraig@hotmail.co.uk

01628 528921
07444206120

A. Stride



Heating & Plumbing

Roofing

General Building

Painting & Decorating

Replastering & Guttering

Service

Estimates Given Free

Telephone: 01494 440219

Mobile 07973 439781



OFFERING FRESHLY PREPARED
PUB FAVOURITES, SUNDAY ROASTS
& DAILY SPECIALS

DINE ALFRESCO

LARGE GARDEN & PLAY AREA

TAPAS TUESDAYS (6PM - 9PM)

SEASONAL WINE WEDNESDAYS (5PM-11PM)

PIZZA & PASTA THURSDAYS (6PM - 9PM)

SATURDAY BRUNCH (12NOON - 2.30PM)

GUEST ALES FROM LOCAL BREWERIES

PRIVATE DINING & MEETING FACILITIES

DOGS & MUDDY BOOTS WELCOME!

01628 532417

WALNUTTREEBOURNEEND.CO.UK

**For Hire - Two Halls
& kitchen facilities**

Ideal for children's parties; aerobics;
dancing; ballet classes; meetings, etc.

Contact Ann 01628 526865
or Muriel 01628 523622

Ample parking @ Cores End Church

ABSOLUTE CLEANING

**Windows & Gutters
Domestic & Commercial**

**Ring Mark Holt
0791 2985500**

**UCAS Preparation and A level
Psychology Tuition**

Not sure which A level subjects to study?
Wondering which university
course to choose?
Need help with your personal statement?

Want to raise your
A level Psychology grade?

I am a highly experienced sixth form tutor,
and A level Psychology teacher.

ritagbond@gmail.com
07939 285562

**OVERCOME ANXIETY, STOP
SMOKING or LOSE WEIGHT**

With hypnotherapy

07518 018 363

www.buckstherapy.com



Another Answer
Books and Accounts

Efficient, Friendly and Local

TEL: 01628 530805
EMAIL: sylvia@anotheranswer.co.uk

First Floor, Bourne House,
Cores End Road, Bourne End SL8 5AR

www.anotheranswer.co.uk





BOOKKEEPING • PAYROLL • VAT • TAX RETURNS • ACCOUNTS

We'll open it now!

SECURE HOMES **30 MINUTE RESPONSE**

UPVC LOCK SPECIALISTS

- UPVC
- CHUBB
- YALE
- UNION
- ERA
- LEGGE
- ASEC
- VIRO
- ABLOY
- CISA
- ASSA

All Domestic & Commercial Lock Problems
Solved by your Trusted & Reliable Family Business

- POLICE RECOMMENDED AND INSURANCE APPROVED LOCKS SUPPLIED & FITTED
- ALL TYPES OF DOOR & WINDOW LOCKS FITTED, OPENED, REPLACED & REPAIRED

EST. OVER **33 YEARS** TRUST IN EXPERIENCE

Chubb **Yale** **GEORGE UNION**

24 HOUR SERVICE 365 DAYS A WEEK

01628 528433
Or if line busy: **MOBILE 07831 487222**

www.allsecurehomes.co.uk
10 Thames Close, Bourne End Bucks SL8 5QJ

FREE Advice, Surveys & Estimates

TALK TO A LOCAL LOCKSMITH ... not a Call Centre!



Arnold Funeral Service

21-23 Little Marlow Road Marlow
01628 898866

891 London Road, High Wycombe
01494 472572

- Traditional and Alternative Funerals
- 24 Hour Attendance
- Pre-Payment Plan



www.arnold-funerals.co.uk

Please support Target advertisers



Marina Life with Peter Osborne



What a great Easter weekend we had. We had great weather, the river came alive and I guess we had Summer in just one long weekend. Time will tell if that was the case.

We welcome Jack Whitehead back as the Saturday boy, his second season with us. Let's hope it's an improvement from last year. Hahahaha, I'm only being serious Jack. He's a young lad, but he loves the river and is very keen on what he does.

Once touched by Bourne End Marina you're stuck with it for life. It's quite an interesting fact that we are in touch with all our Saturday boys going back about 15 years (and one girl).

It will be noticed by people wandering past the marina building that works are underway on the restaurant. It is being brought up to date and is now available for rent. We hope that in the not too distant future it will reopen for business, more as we know it.

It was a great first four months of the year for us with sales and activity greater than last year. It would be handy if this could continue for the rest of the year, but we are obviously very dependent on the weather.

However as I always tell people, whatever the weather the sun always shines in Bourne End Marina.

The boat workload that we undertake started earlier this year due to the sun being out in February.

One thing that happens when the sun takes its hat off is that owners suddenly think about their boats and then all of them call us and want their boats painted, polished and serviced the next day.

Strangely enough, and I know it's hard to believe, they are not all ready the next day. We simply have to work as fast as possible to churn them out like a production line. We usually have the boats prepared by the time they actually want to use them.

On occasions this means the boys working a few longer hours so as to complete a job

on time. I don't pay them overtime but simply give them a roasting if they are late in the next day. It seems reasonable to me.

Our first Winter selling coal has been a success and will be repeated at the end of the Summer. I have to admit that when we had our first delivery of the black stuff the invoice was submitted to the marina owners for payment and there seemed to be some raised eyebrows from the management.

I had to explain what we were doing and why. The invoice was signed off and paid. I believe that there was some amusement among the owners that they now had a coal merchant in their group.

One of the issues that we suffer from at this stage of the season is that we have too many boats due to various reasons. Basically people don't renew their contracts and so we replace their mooring with another boat and then they don't leave.

This may sound good for business, but it's not always good for customer relations as, on occasions, the surplus boats prevent others taking their boats out as they are blocked in.

This is a situation that we regret and that we look to avoid. We can do this by lifting some boats onto the hard, but as we've been active with painting and other work on the boats there has not been room to take boats out of the water to free up moorings.

We have two nests in the pool this year, we have a pair of swans and a pair of grebes, as of yet I am unsure of the numbers of eggs in each nest.

We will be keeping watch and hope all goes well for them. For some reason the pool seems to be a 'romantic' zone for wildlife, I'm not actually sure why, but it maybe because it's quiet. Rocky doesn't seem to get amorous in that part of the marina.

One problem about having a small team is that when one of us takes leave our work

force is down a third. This can cause a few problems as it reduces our capability during that period.

Also, a very frustrating aspect is that when we do have a day or a week off the weather turns and there's either monsoon-like rain or a 'named' hurricane making an appearance. In order to 'make up the numbers when we are short staffed we are fortunate that we can call on Alan 'wrong paint' Sykes to fill in should he be available.

While we try to keep the marina clean and tidy we are aware that the Thames Path passes through and is therefore open to the public. This access adds to the ambiance of the marina. However, we are noticing an increase in litter.

Please can people ensure that the litter bins provided are used.

We are aware that cars come down in the evenings, why? I think I know the answer. Another reason is they come down with their takeaways, devour them, open their doors and then turf out the rubbish onto the ground.

This is beyond me but please, if you are one of these people, please desist.

Chaos and Matty are getting fed up with having to clean your mess up and it annoys many other people.

When Matty is cleaning up he gets very upset that the remains of the kebabs etc are always cold and therefore not so tasty.

I must go now, customers are calling, mainly for Matty and Chaos who must have disappeared when they sighted boats coming in for provisions. We are hoping for a great Summer season and look forward to seeing you down here.

**Until the next time
Peter Osborne, Marina Manager**

HOME PC HELP

- All PC/networking problems
- No callout charge
- No fix – no fee
- 35+ yrs experience

For friendly, personal advice call

**01628 630096
or 0778811 3279
(7 days inc evenings)
www.homepcheap.org**

We know
Bourne End

Are you looking to sell or let your property in and around Bourne End?

Beaconsfield regularly heads the list of the top 10 most expensive towns in the UK and attracts many premium buyers and investors. Could you get more by using one of Beaconsfield's leading estate agents?

To arrange a free, no obligation market appraisal, call us on **01494 680018**. Visit www.ashingtonpage.co.uk for an **Instant Online Valuation**

Ashington Page
Local Residential Sales & Lettings





SMALL BUSINESS MATTERS

with Sylvia Bourhill

Making Tax Digital: what does it mean?

Making Tax Digital (MTD) is all about making tax administration more effective, more efficient and easier for taxpayers, through the implementation of a fully digital tax system. The rollout of the initiative is already underway and MTD for VAT is now in effect. This means that all VAT-registered businesses in the UK with VATable sales above the VAT threshold will have to file VAT returns using MTD-compatible software and store financial records relating to VAT digitally. Starting with the VAT period that began on or after 1 April.

Does MTD apply to me?

Eventually Making Tax Digital will apply to a wide range of taxpayers, including most businesses, self-employed people and landlords, as well as individual taxpayers. Further announcements about MTD for Income Tax and Corporation Tax are expected in the coming months and software providers like Quickbooks Online are actively engaging with HMRC to help simplify the shift for small businesses. For the time being it is just VAT registered businesses that need to comply.

The benefits of MTD

It's not all bad. There are definite benefits to modernising your record keeping:

- Know where you stand with a full picture of your business's tax affairs in your digital account.
- Save time by having access to all your business's tax info in a single place.
- Plan and budget more effectively knowing how much tax you owe.

What next?

If it applies to you, you will be required to use digital tools to keep records of your income and expenditure. HMRC has stated that it won't provide its own software, but will ensure that basic apps and software products are available for businesses with 'the most straightforward affairs'.

Many other businesses and their accountants, however, will choose to use more comprehensive MTD-compatible software, like Quickbooks Online.

These tools use the data from your day-to-day business activity to build an accurate picture of your business's tax data, highlighting any possible errors and offering prompts for information that might be overlooked. Once your software has compiled the relevant data, you or your accountant will then submit it directly to HMRC, either via a computer or a smartphone.

Sylvia Bourhill, Another Answer Books & Accounts
www.anotheranswer.co.uk

THANK YOU

Target magazine would like to thank all those readers who have made donations to keep this magazine going.

We currently distribute a copy of Target to every home in Bourne End and the Wooburns as well as Little Marlow. Our suggested cover price is £1 and we regularly appeal for readers to pay this either by bank transfer (details below and on page 16) or in cash or cheque at the community centre.

Rising production costs over the years mean that despite our loyal local advertisers we sometimes struggle to cover running costs.

But we've been going for 55 years and, hopefully, will continue for many more with your support.

So thanks to anyone who has paid for their copy. This is your community magazine and we have been encouraged by your support.

IMPORTANT NOTICE!

Community centre bank details have changed

Anyone paying membership subscriptions or Target donations by standing order are asked to check that the bank details to which the money is going are now as follows:

CAF BANK - Sort code: 40-52-40;
Account Number 00028301

Target Advertisers are also asked to check and, if necessary, update their records to the CAF Bank Account

Action is needed now please as the previous Co-op Bank Account is likely to be closed and any money paid in could be lost



There is a wonderful selection of mouth-watering dishes on the comprehensive menu at The Last Viceroy.

They include coconut lamb, apricot lamb and cashew nut chicken alongside starters, specialities, traditional Balti, Tandoori and Biryani dishes as well as delicious seafood and vegetarian choices. The friendly and attentive staff will advise you if you are unsure about any dishes on the extensive and varied menu.

You can opt for the Khas-e-Viceroy at £24.95 per person where the chef will prepare a mixed starter, main dishes and side dishes with rice and bread. Or choose the chef's special dishes which are cooked with fresh ground spices and prepared by a slow cooking method to bring out the delicious flavours; six hours' notice is required for these meals.

The restaurant is well-established, having opened 28 years ago. Its cuisine attracts regulars and newcomers alike and its striking interior is divided by floor-to-ceiling pillars, making The Last Viceroy an ideal venue for a cosy dinner for couples or large parties. Open for lunch, dinner and take-aways seven days a week.



74 The Parade, Bourne End SL8 5SS

01628 531383 / 530798

www.thelastviceroy.co.uk



Councillor welcome

We would like to welcome Mike Seaton to the council. Mike was co-opted onto the council at the full council meeting in February and will be representing the Wooburn Town ward. We hope that he enjoys his time on the council and, as he is now our 17th councillor, we are now at our full complement.

Free parking days at Wakeman Road car park

Once again Wycombe District Council has offered us three free parking days for the car park in Wakeman Road. Councillors have agreed the following dates for free parking: Saturday June 8 – Community Centre Open Day. Saturday October 5 – Bourne End Junior Craft Show. Friday December 6 – Bourne End Fun Night. WDC Parking Services will close the payment machines and attach a simple notice stating that parking is free on that day only and the date. Although parking will be free, normal parking restrictions will apply, so illegal parking in disabled bays, on yellow lines or across two bays etc will be enforced and penalties issued if necessary.

Open spaces

The grass cutting season is now well underway and signs of life are starting to show where the old and new wildflower areas have been seeded.

The new fencing enclosing the play areas in Wooburn Park, Bourne End Recreation Ground and Blind Lane Play Area is now in situ along with some new play equipment.

Unfortunately we have experienced some vandalism in Bourne End Rec and one of the new pieces of play equipment has already been damaged along with one of the picnic tables which had been subjected to fire which has melted part of its centre.

If you should witness any vandalism/anti-social behaviour out of office hours please inform the police by calling 101. Night-time patrols are being stepped up in this area.

Litter pick

The Great British Spring Clean organised by Keep Britain Tidy ran this year from Friday March 22 to Tuesday April 23.

A litter pick was organised by local resident Karen Savage and a group of volunteers gathered in Wooburn Park on Sunday April 14 to grab their equipment before setting off to

litter pick the roads and verges where they live. Litter picks, bags and gloves were supplied by the parish council and a good few bags of rubbish were filled by the time they had finished which were later collected by us for disposal. Well done to all those who gave their time to litter pick our parish.

Short & Sweet

The annual allotment judging competition takes place during July/August this year so allotment holders at both sites have plenty of time to spruce up their allotments to get them looking their best before the judging begins. Allotments will be judged on appearance, produce and variety.

The Village Show takes place once more in Wooburn Park on Sunday September 8. Keep an eye on our noticeboards, website and Facebook page for further details when we have them.

Meeting Dates

Full Council: June 25, July 23
Open Spaces, Allotments & Burials: June 4, July 2
Planning, Highways & Lighting: June 5 & 26, July 17
F&GP: July 9

All meetings start at 7.30pm

Normal Parish Council Office opening hours are from 9am to 5pm each day. Please call 01628 522827 if you have any queries, alternatively email the office at clerk@wooburnparish.gov.uk or visit our website www.wooburnparish.gov.uk



The local marina for local people

We offer moorings, diesel fuel, sewage pump-out, boat cleaning services, maintenance, craning and towage by river or road, operations.

We also welcome non-boating people for sales of red diesel, Calor gas, coal, paints, ropes, cleaners etc

Wharf Lane, Bourne End, Buckinghamshire SL8 5RR
Tel: 01628 522813 Fax: 01628 522440
www.bourneendmarinaltd.co.uk
email: manager@bourneendmarinaltd.co.uk

Explore Your Voice!
Singing Tuition with Diane Severson
Functional Voice Training,
Ancient & Modern Styles
Beginners, Advanced or Damaged Voices
divadianepoetry@gmail.com
07484896806



HAND MADE FURNITURE
Architectural woodwork, furniture, antique restoration, panelling, staircases, gilding, lettering, woodcarving, churchwork, sculpture, interior design and free advice.

LILLYFEE WOODCARVING STUDIO
Lillyfee Farm Lane, Wooburn Common, Bucks HP10 0LL
Tel: 01494 671690
Studio open for visits by appointment

WOODCARVING COURSES
Take a new direction and create beauty under the guidance of experts. Call the number above for dates and details.



**Handleless handbags?
Unzippable holdalls/travelbags?
Battered briefcases?
Gaping purses/wallets?
Sad vintage leathergoods?**
We are as near as your nearest post office. Located Eton, near Windsor
01753 862824
www.leathergoodrepairs.co.uk

MARTIN'S
Maintenance & Plumbing

Kitchens Bathrooms
Interior decorations
Carpentry & cabinetmaker

Mobile 07725059321
martinwhite26@aol.com



Bed and Breakfast
THE OLD COTTAGE
HEDSOR ROAD
BOURNE END
SL8 5EE
www.theoldcottagebourneend.co.uk
Tel: 01628 521348
Mobile: 07796 938369
stacey@theoldcottagebourneend.co.uk

See page 19 for details of upcoming films at Bourne End's cinema



TAKE YOUR TARGET

We love this happy sunshine picture from Jane and Mike Tyrrell taken (with their *Target*) at Gibbes beach Barbados in February.

The couple live in Hedsor Road. Jane used to have a ballet school at Cores End and Mike is a keen member of Hedsor Social Club.

Jane says: "We were enjoying the company of some old friends and some much needed sunshine."

Stir up some creativity this Summer

With the arrival of Summer and the better weather (hopefully) local children are probably spending more time outdoors.

Why not encourage them to take some inspiration from their surroundings and take a few photos or maybe even draw or paint a picture or a pebble?

All of these items and many more can be entered in this year's Bourne End Junior Craft Show which will take place at the library in Wakeman Road on Saturday October 5.

Further information will appear in the next issue of *Target*, but for now save the date and encourage your four to 16 year-olds to explore their arty crafty side in readiness.

WOOBURN PARK LAWN TENNIS CLUB

Join Bucks and East England's community club of the Year (LTA awards 2018)

Membership costs from £50 a year

Four floodlit artificial grass courts and modern clubhouse

Friendly club with weekend and midweek play, social events and coaching.

Successful Junior tennis programme.
www.wpltc.org.uk wpltc@sky.com



Aztec heating and plumbing

Repairs to all Gas
Boilers & Servicing
Contracts

Also General
Plumbing Repairs

Central Heating,
Pumps, Valves, Timers
& Programmers

Tel: (01494) 440219 home

Tel: 07973 439781 mobile

Tel: 07831 563477 mobile

SAMSON WINDOWS & DOORS

*Designed to look good
for a very long time*



www.samsonwindows.co.uk

Tel: 01628 524469

We have been in continuous trading within the local community for over 25 years. We supply and install a range of market leading windows and doors manufactured to exacting standards of quality and performance and installed to the highest levels of finish and workmanship. More than 76% of our work is secured by referral and recommendation.

We do not believe in the hard sell, nor do we offer discounts for quick decisions. Our quotation is offered without obligation and discussed without insulting your intelligence. You will find it extremely competitive.



- o A Rated PVCu windows and doors
- o Timber alternative woodgrain windows
- o Authentic style sliding sash windows
- o Composite entrance doors



AS GOOD AS NEW



Mobile Bodywork Repairs

DAMAGED YOUR CAR?
Scuffs, Scratches & Dents

Call Malcolm now for a free quotation!

Office: 01628 532586 Mobile: 07786 482262

The Friends of Wooburn Green are proud to present

Wooburn Green Primary School's

FAMILY FUN DAY

SAT 22nd JUNE 12 - 3pm

Go-Kart Party · Chloe's Castles * Pimms & Prosecco Tent · Rebellion Beer Tent
 Hog Roast * Raffle * Fun Fair Rides * Bucks Goat Centre * Cakes
 School Performance * Live Band "Out of the Project" * Penalty Shootout
 Anna Rose Dance * Hook a Duck & over 30 stalls

Come early and enjoy a fun filled afternoon with us!

FREE ENTRY

Wooburn Green Primary School
 School Road, Wooburn Green, HP10 0HF

All profits go to the children of Wooburn Green Primary School. Charity No 1072380

DRUG AWARENESS TALK

Drug abuse and addiction is not a spectator sport – eventually the whole family gets to play

Tuesday 18th June 2019

7.30pm – 9pm at Bourne End Academy, New Road, Bourne End

Drugs Awareness Talk by Elizabeth Burton-Phillips MBE, Founder of DrugFam (www.drugfam.co.uk) and author of "Mum, Can You You Lend Me Twenty Quid? What drugs did to my family."

Elizabeth will be sharing her own personal story about how drug addiction affected her family. She will be sharing how to look out for the signs of addiction and raise people's awareness of the issues of drug abuse.

Elizabeth's talk is for all parents and anyone in the local community who is interested in hearing Elizabeth's story.

Arranged by Claytons Primary School

Time

is one of the greatest gifts you can give.

Take the *time*... to support those sitting exams,
 to thank your Teachers,
 to appreciate those you love,
 to find a card or gift to make someone smile
 and to spread a little sunshine everyday!

Bourne End Cards & Gifts

19 The Parade, Bourne End, Bucks SL8 5SB • Tel: 01628 521509 • Email: tony@bowlerwright.co.uk



Dylan Dunning's work, in Violet Class, was exceptional. He wrote a message with the title SHARING to help him remember the learning.

S hould I be doing this?
 H ave I affected my future life?
 A nything can be seen online!
 R otten things should be reported.
 I s this violent, anti-gay or racist?
 N o-one should be rude online.
 G ood digital footprints are great for you and your future.
 As Freddie Hayers (age 8) says, "Everybody should have Resilience lessons because they are interesting and they help you."
 *Claytons has received a letter from the Secretary of State for Education, the Rt Hon Damian Hinds MP, to arrange for officials in the Government's Character Policy Team to visit the school to see the work they are doing in resilience..

Claytons pupils show their resilience

The Government has recently announced that from September 2020 all children will be taught about mental health in school. Claytons Primary School has already started this.

Since September 2017 the children at Claytons Primary School have been taught weekly Resilience and Wellbeing lessons related to their school values. The blocks of learning have been on, Emotions and Self-Awareness, Self-Compassion, Accepting and Valuing the Cultures of Others, Empathy, Problem Solving, Hope and Optimism, to name a few.

The children across the school from Reception to Year 6 benefit from the lessons. All of the lessons use books and stories to support the learning.

Erin Dunne (age 8) says: "Resilience lessons have made me think about how I should treat myself. If do something wrong or make a mistake I won't beat myself up."

The children's last block of learning was on Digital Resilience, an important subject for children growing up in today's modern world. The students learnt about the dangers of being addicted to online gaming, fake news and the importance of looking after their digital footprint. Something the children think their grown-up's should think about too.

The older children were taught that their digital footprint is like a tattoo and were asked to consider questions such as, am I giving too much away? Is this ink permanent? Would I want this shared about me?

Our photo shows Freddie (8), Erin (9) and Dylan (10)

Support your local craftsmen and traders

Pedr's Travels



Bourne End resident Pedr Charlesworth's latest report from his epic cycle ride across the world...

Cycling across Pakistan with my Dad

After cycling across the Tajikistan's lofty Pamir mountain range, I was truly spent. It shouldn't have come as much of a surprise; after all, I had chased England's promising world cup campaign over five 4000m peaks on a diet of instant noodles and tins of mystery meat.

The lack of fruit and vegetables had hit me hard. As had the few bouts of food poisoning. Yet, despite looking like a dishevelled, underweight version of a previous self, I was incredibly happy. Never have I looked so bad but felt so good.

I took a selfie to commemorate the occasion, for it felt momentous to have ridden the Pamir Highway and I was more than excited for what was to come next.

Before leaving home, deeply involved in a bike assembly garage session, I had suggested to my Dad that he should join me for a section of the journey. Being a keen climber in his youth, he was eager to swap the calm contours of a hilly Sunday walk for something a bit more extreme. This, we decided, would be Pakistan.

Seeing him there in the flesh after landing in Kyrgyzstan was

something special. It was refreshing to hear the village news from home, but we had little time for reflection, there were some serious mountains to climb before we could even reach Pakistan. His first 'hill' climb (up to 3800m), a crazy border crossing and a few nights spent hiding from inquisitive Chinese police later, we were finally ready to enter the country.

Together we cycled up to the highest border crossing in the world (4730m) and I had to give it to him; for a supposed non-cyclist, it was a seriously impressive ride. We submitted the pass on Pakistani Independence Day (thankfully not as awkward an affair as we had anticipated), where we were swamped by revellers yearning for selfies with us strange European cyclists.

After waiting for the crowds to disperse, a national tv station to finish interviewing us on our impressions of the country so far (yes this really happened), we had the descent to ourselves. Two specks moving between the mind-blowing monoliths.

The bracing air on our faces as we tore through the 50 miles of downhill serpentine road, with orange glaciers reflecting the diminishing sun overhead made that ride something special and far greater than we ever dreamed up in that freezing garage back in Bourne End.

What followed was five weeks of breathtaking scenery, unparalleled hospitality and the occasional AK-47. All went relatively smoothly, from trekking to the basecamp of Nanga Parbat, to riding motorbikes through Islamabad.

Well, smoothly until we tried to leave the country. India refused us entry and we were left marooned between two nations with no valid visa for either. Oh dear...

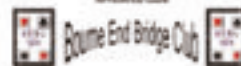
BRIDGE PLAYER'S BIDDING QUIZ

♠A982	W	N	E	S
♥K7432				1NT Pass
♦3		?		
♣943				

2♣. You can use Stayman on a weak hand so long as you can cope with any reply from the opener. Here you will be happy to pass if partner bids a major or continue with 2♥ over 2♣. By asking about the majors, you increase your chance of finding a fit.

Julian Pottage.

English Bridge is published by the English Bridge Union.



Running Rev Janet does it again!

Janet Binns, the vicar of St Mark's and St Nicholas' churches in Bourne End, who is affectionately known as The Running Rev, was on top form again for this year's London Marathon in April. She completed the course in an admirable 3hours 36mins coming sixth in her age category and raising £3,220 for Great Ormond Street Hospital and the rebuilding project at St Mark's. Her next challenge is the Chicago Marathon in October, her fifth of the world majors.



BOURNE END MOTOR COMPANY

Bourne End Motor Company was established in 1994 and in that time we have built a reputation for offering the personal and professional approach normally only found in the more prestigious franchised dealerships.

We have become recognised as one of the leading specialists in low mileage, privately owned cars with full service history. Most of these cars are between six months and four years old. As well as your regular family cars ie. Ford, Vauxhall, Fiat, Mini etc, we also sell luxury brands such as BMW, Mercedes.

Over the years we have built up a vast range of suppliers and through these we can source almost any make and model of car, all of which offer a significant saving than those offered by the larger Franchised Main Dealers whilst still matching their standards.

WAKEMAN ROAD • BOURNE END • BUCKINGHAMSHIRE • SL8 5SX • TEL: 01628 533 222 • FAX: 01628 530 264



- Local Family Business
- All Cars HPI Checked with Service History
- Computerised Stock Locator System
- Most Makes/Models available
- At least six months Warranty on all vehicles

TEL: 01628 533 222
WWW.BEMC.CO.UK

SPORTS DAY IN WOOBURN PARK HAILED A GREAT SUCCESS



What a day and what a turn out at the Bucks Primary Schools Duathlon & Sports Fest 2019. Hundreds of children completed their Duathlon course on a scorcher of a day in May, with many more taking part in the free sport activities across the whole of Wooburn Park.

The event was hosted by local sports coaching company, Sports Nut, and Wooburn Narkovians Cricket Club, raising money for state primary school PE departments and PTA's across Bucks.

One of Sports Nut's directors, Charlotte Small, said on the day: "We're absolutely delighted that today has been such a fantastic family day out. So many children have been able to try a variety of sport activities and we want to say huge thanks to everyone that came to support the event in its first year. There was a fantastic atmosphere.

"We are so proud of all the duathletes showing such determination to reach the finish line; working together, supporting each other. It has completely overwhelmed us that children so young showed such amazing sporting spirit.

"Thank you so much to all our volunteers who have helped make this event possible and we can't wait for next year."

Duathletes raised more than £700 with much more raised by the involved PTAs in sponsorship.

Participants took part in a Run-Scoot-Run or Run-Bike-Run and were rewarded at the finish line with a goodie bag provided by local companies (Envelopes Ltd, Complete IT, Community at Tesco (Loudwater) and Sports Nut) as well as their medal, presented by Ed McKeever (pictured), Wooburn Green's very own Olympic gold medallist.

The London 2012 champion generously gave his time for the whole day, spending time talking to children and inspiring the next generation of sportspeople.

Naomi Barson-Cain, a local parent and chair of the St Paul's Combined C of E School PTA, remarked: "The Duathlon had a fantastic community spirit; full of fun. The children were given so much encouragement and having so many activities to try meant it became a real family occasion, with people staying the whole afternoon.

My own children had such fun, especially with the CrossFit and squash, while so many parents have already asked about how to book for next year."

Children were able to try out rock climbing, CrossFit, football, cricket, hockey, rowing, squash, TAG rugby and gymnastics across the day as well as enjoy the refreshments provided by Wooburn Narkovians.

Sports Nut has already started planning for the Bucks Primary Schools Duathlon 2020, which promises to be an even bigger event.

Solicitors Buchanans

**Divorce | Conveyancing | Commercial | Employment |
Wills | Probate | Litigation | Elderly Client**

Buchanans Solicitors can assist with all the above and more.

Buchanans Solicitors is a friendly, modern law firm which offers a broad range of services and aims to deliver clear advice promptly and cost effectively.

Call us for a free, no obligations chat on 01628 810 707

Swains House, Swains Lane, Flackwell Heath, Buckinghamshire HP10 9BN
office@buchanansonline.com
www.buchanansonline.com



Authorised and regulated by the Solicitors Regulation Authority (No. 304891693)



LITTER PICKERS MAKE A DIFFERENCE

Like many of us Karen Savage was disgusted with the litter she saw strewn on the pathways while walking her dog between Bourne End and Wooburn. Unlike most of us, she did something about it.

Karen, who lives in Stratford Drive, reached out on Facebook to encourage others to pledge to help with litter collection. In mid-April she led a group of litter pickers who set off from Wooburn Cricket Club and spent an active day filling far too many bags with rubbish. Wooburn and Bourne End Parish Council supported the efforts by providing bags and disposing of the rubbish.

Karen, who is a District Commissioner for the Girl Guides, didn't stop there. In May she organised a group of Guides to carry on picking, focusing on the old railway track pathway that links the villages (see picture above).

"It's appalling how much stuff is dumped. The old railway track is particularly bad. There's a lot of rubbish about," she told *Target*. "We have turned up rubbish that's probably 30 or 40 years old," said Karen.

"I have been encouraged by how many people have been in touch to say that they too go out and collect litter in their neighbourhood. I guess if we all did that things would be better. You don't have to take part in an organised litter pick... you can just take a bag and gloves with you when you go out with your dog and pick up some trash.

"Put the rubbish you collect in your bin, recycling, or a parish litter bin. If you go out with your children you could use this as an opportunity to remind your children not to drop litter, and to pick it up if they see it.

"I've registered the villages as the "Bourne End & Wooburn Green Litter Pickers" and you can sign up at www.keepbritaintidy.org Lots of people and several community groups are signing up. But you don't have to sign up, just get picking."



Offer for young people – Amber Kelly takes gentle approach

With three in four mental health illnesses in the UK starting in childhood there is no doubt that supporting our young people at this time of life is paramount. Adolescence is a tough part of childhood, but there are ways to support children at this time and all avenues should be explored.

As a parent we try to find the approach that might be right for our own child. Yet 75 per cent of children with a mental health problem are not receiving treatment. In fact it can take as long as a decade for young people to receive help after first showing symptoms. Opportunities to help are often missed until they reach a 'crisis' causing children to self-harm, become suicidal, be violent or drop out of school.

With pressure on the NHS to help there are other ways using alternative health which might be useful to consider. So to this end I am offering three young people between the age of 12 and 16 an opportunity to try craniosacral therapy and to receive a Bach flower remedy if both their parents are in agreement with this approach. Of course your child should also want to come along and I work with families, not just children, to ensure that the support reaches everyone. Mental health is a family issue.

Craniosacral therapy helps children step down from an anxious state by helping to switch off the 'fight or flight' response in the body's nervous system so they can feel complete rest and relaxation in their physical body. I also provide a bespoke Bach flower remedy to help balance emotions and this in turn helps children to understand themselves better and so move into a more grounded space.

I work in a very gentle and subtle way to help to reassure your child and to also give them the physical and mental space to move out of anxiety and into more command of where they are in their lives.

If you would like your child to try this combination approach please get in touch by phone or text on 07880 905932 and the first three people to do so will receive a complimentary treatment. However please look at my website with your child before responding to ensure what I offer is something they would like to try: www.amberkelly.co.uk



MATHS ENGLISH

KUMON TWO-WEEK
FREE TRIAL
21 MAY - 15 JUNE

PREPARE YOUR CHILD FOR SCHOOL SUCCESS

THIS CENTRE IS OFSTED REGISTERED

Find out how Kumon maths and English study can help your child to achieve beyond expectations. **Book now!**

Flackwell Heath 01628 532620

Developing ability for 60 years

Terms and conditions apply. Fees vary. Participating study centres only. Please refer to your local study centre. Subject to availability.

kumon.co.uk

HOWLAND TUTORS

Established in 1998 and owned by former Borlase's teachers

Members of Tutors' Association

Tuition is available in
20 secondary subjects
and at primary level



Bourne End and
Marlow areas

Further tutors
welcome

www.howlandtutors.co.uk
01628 477164

Amber Kelly
Craniosacral Therapy

Newborn babies, young children and adolescents can all benefit from this gentle therapy.

It helps diminish the effects of birth trauma for babies while older children can feel less anxious, more grounded and more in control.

www.amberkelly.co.uk
07880 905932
01628 528981



PERSONAL TRAINING

**Fed Up Being Overweight & Unfit?
Want To Kick Start Or Improve Your
Fitness Regime?**

**Fully Certified Personal Trainer
Specializing in
Adult & Childhood Obesity
Weight Management
Sports Specific Programs**

For A Free Consultation Call or text

**Jacqui Jones
07595223314**

Email
jacquijones62@btinternet.com

Train at Private Studio
In Flackwell Heath

www.jacquijonespersonalfitness.co.uk



thorough training course, and receive regular support sessions with their dedicated Family Support Coordinator, as well as expenses.

If you decide you have a couple of free hours a week and would like to get involved, we would love to hear from you: please call the office on 01628 661029.

By Cathy Benwell, Home Start volunteer and trustee

Photo left: Cathy with the Mayor of Slough, being awarded a certificate of appreciation for the work done by Home Start



How helping **Home Start** could be the perfect role for you

Do you enjoy spending time with young children? Have you ever thought about getting involved with a local charity? Well, your local Home Start could be of great interest to you.

Our tagline is 'support and friendship for families', and it really is that simple.

Following an intensive training course, our team of amazing volunteers – most are parents themselves – are matched with a family with young children who are struggling in some way.

The volunteer makes a commitment to visit that family every week for a period of about six months. As many of us recall, being a parent isn't easy – and some people need a little extra support.

There is so much research to show that intervening in a family's life when their children are still very young can be hugely beneficial.

And it doesn't have to be complicated. Many of our families are just after a second pair of hands, or someone to talk to.

I heard about Home Start for the first time about eight years ago, with a two-year-old and a brand new baby of my own. I remember thinking how brilliant the service sounded, and eventually undertook the 11-week volunteer training course in Autumn 2017.

In Spring 2018 I also joined the board of trustees, so am now working with Home Start in two very different ways.

The first family I supported after completing my volunteer training course had seen one of our leaflets in their local GP surgery and got in touch for help. I visited them for the first time in January 2018; there was thick snow on the ground outside and the temperature was hovering around zero.

After half an hour in the house with the family, I was frozen: the heating wasn't on, the four-month-old baby was in a thin cotton babygro and the three-year-old was running around in shorts, a T-shirt and bare feet.

It transpired over time that mum was suffering with quite serious mental health problems, which were affecting her ability to look after her small children properly – but because I was in the house every week, talking to her and building a bond with her, we were able to get that family the professional help they needed.

There are so many reasons that families need our help. And in times of great difficulty and stress, our volunteers are a vital lifeline, giving mums and dads the confidence and skills they need to cope with their daily lives.

None of our volunteers have formal qualifications; they are men and women, aged between 26 and 71. Volunteers begin with a

Fifteen Years Ago

In 2004 Slate Meadow at Cores End ignited passions as planning issues inspired fierce opposition from locals. There was a protest song, billboards along the River Wye along with signs and banners. The action attracted an outside broadcast with TV's Andi Peters spending an afternoon interviewing the protestors – many on horseback.

Children got together to record *Save Slate Meadow We Plead* with readers of the *Bucks Free Press* phoning in to hear the recording. Here's some of the children who are adults today and might easily have been involved in the current release of Slate Meadow for development.

Fifteen years ago seems just like yesterday to those who gaze on the meadow, the horses and feel it should stay that way.

L & J vehicle specialist

- Servicing
- Diagnostic
- Maintenance
- Repairs
- Tyres
- MOT (by appointment)

Car repair & maintenance on all makes of vehicles, classic cars & light commercials

Free Collection & Delivery Service

in and around surrounding areas of High Wycombe



L & J vehicle specialist

For all your vehicles needs

Call us on **01628 669111**
to arrange an appointment

Enquiries: ljvehiclespecialist@gmail.com

www.ljvehiclespecialist.co.uk

Old Station Yard, Station Road, Taplow, Maidenhead, Berkshire SL6 0NU

JAMIE'S TOURS

Picking up at a location near you!

Perfect days out to sea and gardens

Garden lovers paradise at Highgrove

Enjoy lunch then a two-hour tour of Highgrove Gardens with an expert. Estate Shop open with huge variety of specialised home and garden ware. Tuesday 25 June £66.50 includes lunch

July's trip is to Brighton

Sun (hopefully), sea (definitely) and shopping (essential)

Wednesday 17 July £23.50 each

Fabulous August choices

Highclere Castle: home to Downton Abbey

Explore the stately home, gardens and Egyptian Exhibition

Wednesday 14 August £42 each

Eastbourne Airbourne

The airshow to see over a brilliant coastline and with aircraft galore

Thursday 15 August £23.50 each

And for a short break holiday:

Norton Grange on the Isle of Wight 9 to 13 September £335pp (sharing)

Phone or email Jamie to go on the mailing list

www.jamiestours.com

Ring 01494 416500 Mob 07714583215

or email jamiefyfe2@gmail.com

PLEASE PAY FOR YOUR TARGET MAGAZINE

We need your help to continue



Target magazine is produced by Bourne End Community Association and is distributed by a network of volunteers to households in Bourne End, Wooburn Green and many surrounding villages. We print and distribute more than 5,000 copies every two months.

The cost of producing the magazine has increased over the years, and although we have some lovely, loyal advertisers we struggle to cover our production costs.

We have a cover price at £1, although most of you will receive and read it for free.

Many supporters have mentioned to us they would be happy to pay for the magazine and you can do that one of two ways:

£6 for one year £10 for two

By cheque made payable to Bourne End (Bucks) Community Association and sent to the address on page 2. Please put Target on the reverse of your cheque. Or by direct transfer into our CAF Bank account, sort code 40-52-40 account number 00028301. Just put TARGET in the reference line.

If you need a receipt please pay by the cheque method including a stamped, addressed envelope.

Thank you!



Brittons Solicitors

2 The Parade
Bourne End
Bucks SL8 5SY

Friendly, helpful, professional, efficient and cost effective legal service.

We look after you.

Telephone: 01628 533350

Fax: 01628 533119

Email: lex@brittonsol.co.uk

The Pentagon Clinic

Osteopathy and Physiotherapy

Stella Halpin BSc.(Ost)
David Turner B.Ost.
Morag Bowie M.C.S.P.M.H.P.C.

The Annexe
Bourne End Day Care Centre
Wakeman Road, Bourne End
Bucks SL8 5SX

email: info@pentagonclinic.co.uk

www.pentagonclinic.co.uk

Tel: 01628 533200

Our highly qualified and established Clinical Team continue to provide Osteopathy, Physiotherapy and Sports Massage for all ages. We have a wealth of experience in the assessment and treatment of a wide range of musculoskeletal conditions.

V J CLEANING

ALL HOUSES & BUSINESS PREMISES CLEANED TO THE HIGHEST STANDARD

REGULAR WEEKLY CLEANS OR ONE-OFF DEEP CLEANS. WE CAN WORK HOURS TO SUIT YOU, HOWEVER BIG OR SMALL.

FOR A FREE, NO OBLIGATION, QUOTATION

CALL US NOW ON 07869 127508 OR 01628 527891

bourne end dental



Our exceptional levels of expertise and our team approach to caring means Bourne End Dental has been at the forefront of general practice for more than 20 years.

- ❖ Considerate dentistry in a caring environment
- ❖ Superb clinicians with a family focus
- ❖ Early morning & Saturday appointments
- ❖ Specialists in gum therapy, root canal treatment & braces
- ❖ Cosmetic dentistry & whitening
- ❖ Dental implants & facial aesthetics

Protecting, renewing and enhancing the lifelong dental care of our patients

01628 523 353

Station Road, Bourne End, Bucks, SL8 5QF



www.bourneendental.co.uk

New clerk at Little Marlow Parish Council

I'd like to thank the community for the support and warm welcome offered to me in my first six months as parish clerk.

My name is Jo Murray and I joined the parish council towards the end of November 2018.

I work Monday, Wednesday and Thursday between 9.30am and 1.30pm and can be contacted on the details at the end of this report.

Flytipping

The parish council continues to work hard to make progress with regards to the flytipping in the area, alongside Buckinghamshire County Council, Wycombe District Council, Thames Water, Thames Valley Police and private landowners.

Because there are a number of bodies involved there is not a swift resolution, but please be reassured that as a council we are doing everything we can to push a resolution forward.

Allotments

There is nothing like fresh produce. We have several different sized plots available at our allotment site in Chapman Lane, Well End.

There's a lovely community spirit at the allotments and the ability to mix exercise with the ability to grow your own produce and make new friends. Should you be interested, please contact the clerk.

Abbotsbrook Hall and The Pavilion

Both these Little Marlow venues are available to hire and offer great spaces for birthday parties, gatherings or clubs.

Please contact Abbotsbrook Hall Hiring Administrator Mrs Samuels on 01628 528936 or the Clerk for The Pavilion in Little Marlow. You are more than welcome to call and visit either venue prior to booking.

Dog bins

Little Marlow has two dog bins in the village. The

first close to the Queens Head and the second on The Moor – both located on popular paths for dog walkers. We'd like to persuade dog walkers to responsibly dispose of dog waste in the bins provided.

Little Marlow Parish Council Website

The website will be revamped and updated during July and we're keen to know how you keep up with local news and information. Please visit: www.littlemarlowparishcouncil.org.uk

Meeting

Parish Council: July 9 at The Little Marlow Pavilion at 8pm. Open to press and public.

Parish Office opening times are 9.30am to 1.30pm Monday, Wednesday & Thursday. Please call or email if you have any queries.

The Pavilion, Church Road, Little Marlow SL7 3RS

Email: clerk@littlemarlowparishcouncil.org

Tel: 01628 890301

Twitter: @littlemarlowpc

Sapphire

For hire and sale

- EVENING PROM PARTIES AWARDS DINNERS

For sale only

- BRIDAL WEAR BRIDESMAIDS MOTHER OF THE BRIDE / GROOM SPECIAL OCCASION

Coordinating hats, head pieces, shoes, bags and jewellery.

01628 530516
info@sapphiredresses.co.uk
Mon to Sat - 9:30am to 5:30pm
11a - 13 Wycombe Lane
Wooburn Green, HP10 0HD



Gutter Cleaning

Before & After Photos
No problem? No charge.

Call for an instant price
01628 878 448

Get a price and book online
GutterPRO.co.uk



CHRIS GATES

Decoration & Repair Services

- *Top quality interior and exterior decorating
- * Interior carpentry, plastering, coving and tiling
- *Repair and restoration of exterior woodwork
- *Box sash window repair and refurbishment
- *All types of glazing repairs
- *Fully insured with references available on request

For advice and a free estimate
Tel: 01628 529698
Mob: 07802 457274
Bourne End



BY APPOINTMENT TO
H.M. QUEEN ELIZABETH II
HEATING & PLUMBING ENGINEERS
& S. BOILER SERVICES



Reg No 62

RS Boiler Services

Gas • Oil • Heating
Plumbing • Electrical
L.P.G. Specialists • Propane • Butane

TEL: MARLOW (01628) 483099 FAX: (01628) 476843

Cutting Edge

All in one
hair
beauty
&
barber shop



**NEW
Tanning
Studio**

t. 01628 526070
www.cuttingedgewooburn.co.uk

No. 25

25 The Parade,
Bourne End,
Bucks
SL8 5SB
01628
528877

Open Monday
to Saturday
9.30am to 5pm
See website for
Sunday Open
Days

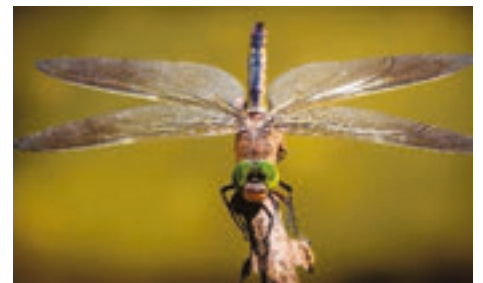
Special
occasion and
cruise wear.
Accessories
too...

www.No25ofBourneEnd.co.uk



G James Plastering

All aspects of Plastering
undertaken big or small.
Reliable, professional with all
works completed to a high standard
Tel: 07733234190

Environmental report
by parish councillor Katie Lamb

After some very windy days the sun is now shining. The bluebells in Farm Wood look beautiful and the sweet aroma wafts past you with every step.

Montague Dog and I have been out and about visiting our ponds and looking at the life within and around them. Because of this I've been reading up about pond wildlife and it has been really interesting.

I had forgotten that frogs have teeth and toads don't or how to tell the difference between a damselfly and a dragonfly – a dragonfly rests with their wings held away from their bodies like an aeroplane and damselflies rest with their wings closed back next to their bodies.

You may have seen people out and about litter picking, Phil Clark came to the parish council asking if we would support a campaign for locals to litter pick in their immediate area with the idea that groups could get together a few times a year. Some people have gone above and beyond, going out walking with litter pickers and bags tidying up parks, hedgerows and open areas. Thank you, what you do makes a big difference and the council is happy to lend out pickers, bags and to collect the full bags by prior arrangement. Please see page 14 to read about Karen and all her hard work.

The Village Show is well underway with plans coming on to make this show bigger and better. Keep Sunday September 8 free. We will have craft stalls, a dog show, baking, making and produce prizes to be won, games, rides, classic cars and loads more planned. Look out for information about the village show and on the parish council's facebook pages. To get involved please call the office on 01628 522827

As May ends everything changes at the parish council. We all stand down, committees are re-formed and working parties are discussed and set up if they still have work to do. Looking back over the year we have achieved a lot.

We have kept to our biodiversity pledges, listened, acted and have now fulfilled the wishes of many park users with fences around the play areas and new equipment. We have done lots of work in The Warren, opening up the old driveway as a path and clearing around some of our oldest trees so they have space and we can all appreciate them. All the trees in the parish are being surveyed so we can plan any work that will be needed – Farm Wood is being looked at as a separate project as we need to really understand how we manage this area in the future, both from a wildlife and people perspective. These and many other projects keep us all busy.

I would like to thank our rangers, Roland, Shane and Tom for another year of hard work (and tea drinking) and Malcolm, Gail and Penny in the office who keep everything running smoothly.




BLUE DRAGON
LAUNDRY & DRY CLEANING

DRY CLEANING &
DOMESTIC LAUNDRY

- Dry Cleaning Services
- 2hr & Same Day Options
- 10% off with a Preferential Card
- Domestic Laundry
- Shirt Laundering
- Wedding Dresses
- Ironing Services
- Home Furnishings
- Alterations & Repairs
- Textile Care Products

**BLUE DRAGON
DRY CLEANERS
AT YOUR SERVICE**

BRANCHES:
BEACONSFIELD | BOURNE END
GERRARDS CROSS | ICKENHAM
MORE AT WWW.BLUEDRAGON.UK.COM



Movie time...

More great movies are coming soon to The New Royalty Cinema held at the community centre.

On June 8 you can join in with the sing-a-long version of *Mamma Mia! Here We Go Again*, the delightful follow up to the *Mamma Mia!* film which delves into the back story of the Meryl Streep character, Donna.

In 1979 young Donna, Tanya and Rosie graduate from Oxford University – leaving Donna free to embark on a series of adventures throughout Europe. On her journeys, she makes the acquaintance of Harry, Bill and Sam.

This sequel has everything and more than the original including the delightful Lily James as the young Donna. It's packed with great Abba numbers and loveable characters.

In July *The Dish* tells the true story of a group of eccentric scientists who are responsible for manning a satellite dish inauspiciously located on a remote Australian sheep farm.

Much to NASA's alarm, the unconventional Aussie team – led by Cliff Buxton (Sam Neill) – are the world's only hope for receiving the historic images of man's first steps on the moon. With help from the colorful cast of local characters, the crew struggles to overcome a series of mishaps.

Starting times for the films are on the posters (left). Tickets on sale at the community centre or on the website. There's a barbecue at 5pm on June 8... but if you partake, remember to save some space for popcorn and Beechdean Dairy ice cream during the movie!

If you have mobility problems or use a wheelchair...The community minibus, with an automatic lift, will provide transport for all the cinema showings. Wye Valley Volunteers are keen to get more people with mobility problems out of their homes for a great afternoon or evening at the movies. When you buy your ticket just say that transport is needed and supply your address and telephone number. It's as simple as that.

Turn over for more Community Centre News



Why not hold your party or event at Bourne End Community Centre?

We have various rooms for hire to fulfil your party or special event needs and kitchens available for party food.

Our cosy, welcoming Centre Bar can be used by your guests (hour extensions can be arranged) with drinks at competitive prices (cheaper than your local pub).

Check out our room rates by calling the centre on

01628 522604

or go to www.bourneendcommunitycentre.org.uk for more information



The Centre, Wakeman Road, Bourne End, Bucks SL85SX

Every once in a while - take the scenic route



centreTalks

Anton Boon

History of Chocolate with tasting



Thurs 13th June 19:30 for 19:45
£5 (£4 for Ass'n members) on the door or
£4 (£3 for members) in advance online or from
the Centre Office or the Centre Bar
bournenendcommunitycentre.org.uk
A fund raising activity for B.E.(B).C.A.



centreTalks

Chris Chacksfield

The Vulcan Bomber



**The Vulcan Bomber; What, Why
and How was it involved in the Cold
War of the 1960s. A personal view
from someone who flew the
aircraft for 6 years.**

Thurs 11th July 19:30 for 19:45
£5 (£4 for Ass'n members) on the door or
£4 (£3 for members) in advance online or from
the Centre Office or the Centre Bar
bournenendcommunitycentre.org.uk
A fund raising activity for B.E.(B).C.A.

ANGLING CLUB

Tales from the water's edge...

Our March venue was on the Jubilee River. This was cold, wet and windy as eight bravely turned up to fish. Unfortunately nobody caught except Anthony Colborn who caught two ounces. A disappointing day but it was the worst weather and it has been a while since the club has fished the rivers.

In April we were at Milton Pool Fishery. This was a better day with Trevor Beales winning with 38lb 9oz of carp. Second John Wallis with 26lb 9oz and third place Terry Belcher 23lb 14oz.

Our last match of the season was at New Farm on May 5. This was a cold Bank Holiday Sunday with frost on the cars when we left home. Although the rain stayed away the windchill was somewhat different to the warm and barmy Easter weekend. However everyone caught some fish in the freezing conditions. The winner of the match was Terry Belcher with 22lb 6oz, second was Trevor Beales with 12lb 13oz and third was Jim West with 12lb 10oz.

We are returning to New Farm in June for our first match of the new fishing season. Hopefully the weather will be warmer and the fish will be biting.

Our AGM, trophies and rejoining night was on May 15 and the big news is that we have affiliated with the Thames Valley Angling Association giving our members access to a considerable amount of free water. We hope to eventually have a few friendly matches on the river and we have had invites from other fishing clubs to have friendly matches.

With an exciting year ahead with some new places to try for matches we have a new Match Secretary, Robert Smith, who has been a member for 46 years, so plenty of experience with the club and I will assist as much as I can.

I will be doing the Angling write ups for *Target*. I must thank Terry Belcher for all the write ups in the past - he will be a tough act to follow. I would also like to thank Eric Leuzinger for the last write up and for assisting us with the affiliation to the TVAA. This will be good for the club and should encourage new members with free waters to fish.

Bob and I will be at the centre's open day if you want to discuss angling - come and say hello. For information contact me, Michele Smith, by email on raemichelsmith@yahoo.co.uk

Tight lines and looking forward to an exciting new season

CHESS CLUB

Sixty four chess players arrived at the community centre in April to compete in the Chess Congress. "It's a brilliant venue" Andy Smith told *Target*, "and it had been the longest continuously run tournament in the UK until last year."

Now it's back with hopes that the fine tradition will continue for many years to come.

Some of the players were from the Bourne End club, but there were a good number from Slough and Oxford. The community centre was taken over with the Eghams Room used as between games. Refreshments were available and there were bar facilities. All they had to remember that this year there was a charge in the public car park.

Many of the players were still there at 7.30pm for the results and prize giving. With four sections there were three prizes in each section. There were loud cheers for every prizewinner and a cheque over by Andy Smith. Earlier many greeted former organiser, David Langford, who had come for the awards. David was thanked by the club for his work on this event in the past.

Finally the champion player of the day was Will Claridge-Hansen (19) who was thrilled by the cheque. Studying hard for university exams Will took time off for the tournament. He told us he had been playing chess since he was a youngster. "I enjoy the game but my Dad is also a player and he has always been there for me and kept my game going."

Thanks went to Roger de Coverly and Andy Smith who assured the chess players that the Chess Congress would be back for 2020!

Chess honour Congress founder

In 1976 George Parker suggested the idea of a Chess Congress to his local club in Bourne End. He felt that the premises would be perfect for a one-day tournament. George died in 2019 and the chess club decided what to do.

Now, in his memory, the George Parker Memorial Chess Congress will again become a reality. We smiled at that and would have been delighted that the annual event continues.



**Bourne End
Community Centre
Open Day**



Saturday 8th June 9am - 1pm

Bourne End Community Centre invites all residents and businesses.

Free Entrance and Free Parking for all!



Wakeman Road, Bourne End. SL8 5SX
<http://bourneendcommunitycentre.org.uk/>

**centreJAZZ
in the bar**

Make a date with our regular jazz evenings in the community centre on the first Tuesday of each month. We provide a warm, welcoming atmosphere for jazz enthusiasts and lovers of live music. Music starts at 8pm. The £5 entrance includes raffle ticket with great prizes. It's unmissable!

The Dixieland Swing Kings June 4
Dave Rance and his Rocking Chair Band July 2

Volunteers needed: Publicity & events

We are a friendly team of volunteers promoting and organising events in the local community. If you have any marketing and organisational skills to offer and would like to get more involved in Bourne End Community Centre, please contact us. Give us a try! You'll meet some great new people, maybe learn some new skills or brush up on some old ones! Please contact sarah.little@bebca.org.uk Hope to see you soon



Harrow,
a rest area
do was
ctions there
ue handed
for the
the cheers and
d Target that
a good player
Chess



Top: All the prizewinners, above: l-r Roger de Coverly, Will Claridge-Hansen and Andy Smith

End. As a keen golfer, rugby player and member of the community
ed in 2017 and for two years there has been no Chess Congress while

gular event in the chess tournament calendar. George would have

RACE NIGHT 

SATURDAY 15th JUNE 2019

BOURNE END COMMUNITY CENTRE

DOORS 7.30PM - FIRST RACE 8.00PM

 **Fish & Chip Supper Included***

 **Raffle**

**TICKETS
£10**



**TICKETS AVAILABLE ONLINE AT www.bourneendcommunitycentre.org.uk
OR FROM CENTRE OFFICE - CALL 01628 522604**

* Vegetarian option available if ordered in advance

The race night is a fund raising event of Bourne End (Bucks) Community Association - a charity registered in England and Wales No. 300236.

Shaun Guard
TV AERIAL SERVICES

- Poor reception solved
- Aerials Repaired & Supplied
- TV's - hung on your wall or set up & tuned
- Internet - extension points & improved wifi
- Extra TV Points - for aerial and Sky
- Sky TV - also foreign language satellite

OXFORD AERIALS

Call Marlow
01628 439115
www.oxfordaerials.co.uk

STEVE HOBSON
Plumbing & Heating

Boilers, Gas Fires, Cookers, Servicing, Installations and Repairs, Gas Safety Landlord Certificates, Unvented Systems & Plumbing, Vaillant approved installer

Tel: 01494 524357
 Mobile: 07762 082984



R J Heath Decorating
 Quality Painting & Decorating
 Professional & Reliable Service
 Call: 07963 177476
 Email: hector75@hotmail.co.uk

BS GARDEN SERVICES



- *Hedge Cutting
- *Fencing
- *Turfing
- * Garden Clearance
- *Driveway & Patio Cleaning

Call **07966205145**
barrysteptoe@yahoo.co.uk

Pilates Matwork Classes
 Beginners/Mixed Level and Intermediate
 One to one by appointment

Venues - Abbotsbrook Hall
 Upper Thames Sailing Club
 Little Marlow Pavilion
 St Dunstan's Church Hall - Bourne End

Call **Sally on 0787 625 1967**

DAVID HARRIS
Electrician

FOR ALL YOUR DOMESTIC WIRING
 Qualified & Experienced with
 Electricity Board - Part P
 TELEPHONE: 01628 810349

TO HIRE
ABBOTSBROOK HALL
 For Wedding Receptions
 Meetings, Dances, etc.
 APPLY TO
MRS C SAMUELS
2 RED COTTAGES
WELL END
 or telephone
01628 528936
 AMPLE CAR PARKING SPACE

Jade and Bobby welcome you to The Garibaldi.
 Enjoy a drink and food looking at our lovely view



OPENING TIMES:
 Tuesday - 12:00 - 23:00
 Wednesday - 12:00 - 23:00
 Thursday - 12:00 - 23:00
 Friday - 12:00 - 23:00
 Saturday - 12:00 - 23:00
 Sunday - 12:00 - 10:00

*Food is available
 Tuesday to Saturday and
 there's a home cooked
 Sunday Lunch.*

Hedsor Road, Bourne End SL8 5EE Tel: 01628 522092
www.garibaldipub.co.uk

For fast, friendly & affordable
 taxation advice
**Tax Returns/Self
 Employed Accounts etc.**
 Home visits & evening appointments available

For a quote, ring Keith on
 01628 520426
 or visit our website at
www.randallassociates.co.uk
 for further details
 Keith Randall ATT
 Randall Associates
 30 Stafford Drive, Wooburn Green HP10 0QH

 **Kingfisher**
 Building Consultancy

Thinking of extending?

We offer:

- Full architectural design service
- Planning and building regs applications
- Extension, loft conversion & remodelling
- Party Wall surveyor services
- Building and development consultancy

*For professional, friendly advice, please
 phone Bourne End (01628) 526998*



FOR HIRE
St Mark's Church Hall
 Station Road
 Bourne End SL8 5QE
 Enquiries to: **Linda Jolliffe**
01628 521510

**TRYING TO JUGGLE
 YOUR CHILDCARE?**

Cookham Montessori School
 For children aged 2-5 years

We are extending our hours to offer a flexible package for busy mums!

Mix & match your daily requirements:

- Session start times: choose from 8.30am, 9.00am, 9.30am or 12.30pm
- Session finish times: choose from 12.30pm, 1.30pm, or 3.00pm

Funding available for 3 & 4 year olds
 Term Time Only
 Ofsted Validated



Phone **01628 529414**
www.cookhammontessori.com

EMMETT CONSTRUCTION DEVELOPMENTS LTD

Extensions – Conversions
Refurbishments – New Buildings
Private & Commercial Work Undertaken

Tel/Fax **01628 524500** e-mail: emmett123@btconnect.com



BOURNE END JUNIOR SPORTS CLUB

NEWSLETTER

Founded in 1970 Bourne End Junior Sports Club is a registered charity run by volunteers to provide sport and recreation for children and young people, with many being highly qualified in their own sport. The New Road Sports Hall was built in 1982 and later extended to include a climbing wall and a club room. The multi-sport centre is used extensively by club members and members of the whole community. Please visit our website for more information www.bejsc.co.uk

TABLE TENNIS SECTION

This is returning to our sports hall. Having been one of our original and most successful sections we are delighted the sport has had a revival.

The section has been playing at Flackwell Heath but has become so popular it outgrew the space. Starting with just a few children it doubled in size rapidly and developed under the excellent leadership of coach Tony Jackson. He will have seven tables at the hall so to find times and days please look at our website - www.bejsc.co.uk for details.

Back in November 2018 we entered a team into the National Cadet League. Initially the team finished bottom of the league due to lack of experience and being new to table tennis competition.

With dedicated practice and coaching the team, after only three further matches, finished top of the league and will be promoted next season. Such is the success of this team and further talent joining the sessions we are intending to enter a second team next season.

Our number one junior, Jamie Woodford, represented his school team, John Hampden, High Wycombe, in the school National Championships.

They reached the finals and finished a creditable third place nationally.

In December 2018 the three other coaches and I formed the Heathrow Junior Table Tennis League. The primary aim of this league was to give all levels of player from National Cadet League 4,

down to beginners a chance to get invaluable competitive match play experience.

The following players represented the sports club during the season which finished in April: Jamie Woodford, Charlie Cook, Nick Bille Gammelgard, Jonathan Goldsbrough, Arjun Sawant, Pratham Bhargava, Marcus Doe, Samuel Tschiesche, Veer Aujla, Thomas Gillham, Hyaan Rauf and Jack Dennis.

The league was split into six divisions. Initially we started in Div 2, Div 4 and Div 6. All the players performed admirably during the season and through their efforts gained promotion from each division. We finished in Div 1, 3 and 5 which indicates the improvement they have all made.

Added to that Marcus and Jack stormed their Div 5 match beating all teams 5:0 which means promotion at the start of next season to Div 4. The future looks bright for our club.

Bottom left is a picture of the National Cadet League Team. From left to right Charlie Cook, Arjun Sawant, Jamie Woodford (No. 1 Junior)

FOOTBALL SECTION

The new Tiny Kickers sessions have started. Aimed at two to four year olds, these parent-led sessions will give kids confidence and work on gross motor skills and basic ball control. To register for a taster session, please email bejscarfootball@gmail.com

SportsFest is nearly upon us. More than 150 teams are registered including five from our twin town Octeville-Sur-Mer. If you are free on the day, please come along and enjoy the (we hope) sunshine and great atmosphere. Oh and the beer and Pimms tents. Saturday June 8, Wooburn Park from 8.30am. Thanks to village businesses for supporting us.

Congratulations to Bourne End Athletic U18 on winning the league (see picture below). Those watching at the beginning of the season could be forgiven for being surprised. Only one win from the first five games... they then went unbeaten for 13 games winning 12 of them. Well done to coaches Matt Chraniuk and Del Strachan and all the boys!

50 YEARS OLD IN 2020

Plans are underway for celebrations to mark the 50th anniversary of our club. Save the date of June 20, 2020 for the grand dinner dance, but there are plenty more events leading up to that.

Visit our website to complete our survey if you were a volunteer or former member <https://bejsc.co.uk/general/1313/> On the same link you can watch footage from a 1970-71 film.

Sports on offer to club members

If you have any questions please email office@bejsc.co.uk.



For information on clubs using our premises please contact the sports hall www.bejsc.co.uk
email: office@bejsc.co.uk. Chairman Matt Todd 01628 528110 Editor: Liz Hutton 01628 478168
Manager: Pete Sherwood 01628 528110 mobile 07710 132424
Sports Hall: (answerphone) 01628 528110

Mum's 56 mile fundraising run

A Bourne End mum is taking on a 56 mile Ultra Marathon Challenge in aid of Great Ormond Street Hospital to raise vital funds for much-needed parent and family accommodation.

Alexa Broude, who lives in Fieldhead Gardens, is running along the Thames Path on Sunday June 9, to raise funds, but also to thank staff for their dedicated support and care throughout her three-year-old son George's life-saving open heart surgery last year.

Alexa said: "The hospital has saved and transformed our son George's life not just once, but several times. They not only support us as parents but also Alice, George's six year old sister. They provide a fantastic and holistic service and we feel that the provision of family and parents accommodation is such a fantastic cause. I'm looking forward to raising as much money as possible for The George Broude Team GOSH Fund. Our first target amount is £10,000 towards parent accommodation close to the hospital."

Alexa's 56 miles ultramarathon is a solo, self-arranged challenge and just one of many she will undertake during 2019. She will also be running multiple marathons and half marathons. Alexa's training plan from January to June means that she has run around 570 miles just to enable her to be fit enough to complete the 56 miles.

"Running these ultra-distances and raising funds is the least I can do to give back for what GOSH has and is currently doing for George and our family," she says.

George was born with a rare congenital heart defect called Ebstein's Anomaly and he also had a hole in his heart (Atrial Septal Defect). His parents weren't aware of his heart condition until he was a few hours old and his wellbeing started to rapidly deteriorate.

Alexa said: "Having a child diagnosed with additional needs can be hard to accept. We can't



Alexa with George and Alice

explain in words how it feels to be told out of the blue that your child is very sick."

George had open heart surgery in April 2018 to repair his defected tricuspid valve. A few weeks after his successful open heart surgery, George was diagnosed with a secondary heart condition (Atrial Flutter and two types of arrhythmia) and had to get ready for another operation.

Despite the surgeons making huge improvements to his heart conditions during each operation, George will require a lifetime of observations, medications and potentially, further operations including the fitting of a pacemaker. "His heart will never be perfect, but each day research is making so many advancements in cardiac research that we

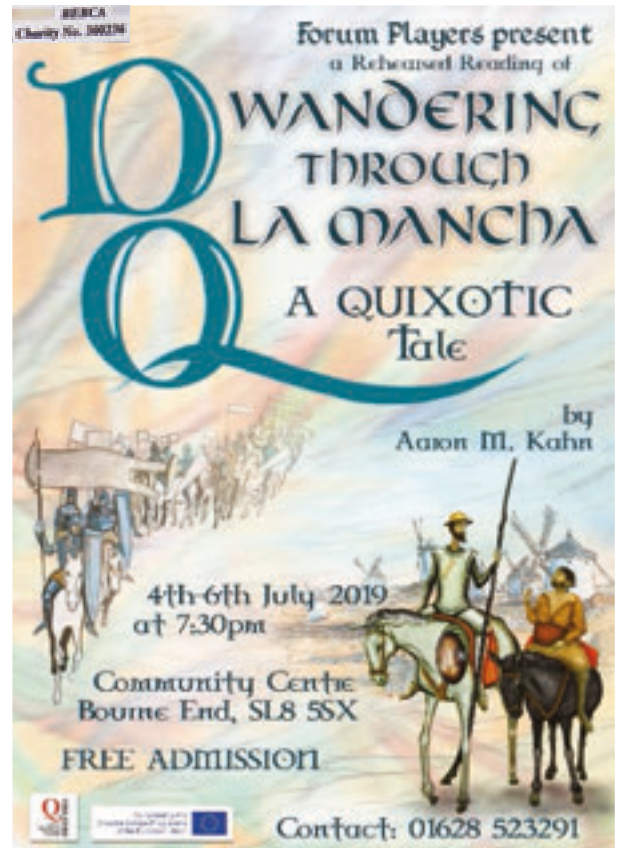
feel George has a very bright future ahead of him.

"While we stayed at the hospital, the parent and family accommodation provided was a much-needed space away from the hospital to gather our thoughts with the added benefit of home comforts. We have set up The George Broude Team GOSH Fund to support other families like ours and make them feel as much at home in the hospital environment as we do.

For information or to donate go to www.justgiving.com/fundraising/goshgeorgebroudeteam

Alexa is sharing her running journey on Instagram: @gosh_mummybroude

Photo here and on page one by Eleanor Calais Photography



FORUM PLAYERS

Don Quixote will come looking for windmills*

A delight for July will come from Forum Players. Bourne End's own amateur dramatic group has been selected to take part in a research project to tell the story of Don Quixote. Funded by the European Commission, with collaborators from Spain, Italy, Portugal and France, the stage at the community centre will come alive with colour, pageantry, and chivalry.

Wandering through La Mancha: A Quixotic Tale is not to be missed. The script comes from the first part of the book and has been specially written for this production. The author is Dr Aaron Kahn, lecturer in Spanish at the University of Sussex. Through three acts the story deals with women's emancipation as well as the Inquisition while there's a light-hearted theme to the finale.

Forum members' response was immediate – here was something completely different to anything they had done before. They also cast further afield and got support from other amateur drama groups.

Here was a chance to stage Don Quixote – a story that regularly appears high on lists of the greatest works of fiction ever published. Often called the "best literary work ever written".

And you can be involved – make sure you attend one of the shows – then complete a questionnaire afterwards. You might find that there's a survey taking place when you visit Bourne End – as part of the research project, enjoy being part of something that brings a glorious story to the stage.

Entry to every performances is free so come, bring friends, have a drink in the bar before getting lost in the magic of this knight-errant, his lady-love and the legendary Sancho Panza – and many more larger-than-life characters.

* Remember – *Don Quixote* is known for tilting at windmills – an idiom that means attacking imaginary enemies.

MANKIND

MENS HAIRDRESSING

Tel: 01628 528974

Appointments and walk-in service

15 The Parade, Bourne End, Bucks SL85SA



Bridge to mental wellness

Recent research has shown the importance of exercising the brain, and there is no better way than playing regular sessions of bridge in a challenging but friendly environment.

In the past year, both Alan Perry and Harry Williams, two members of Bourne End Bridge Club, celebrated their 90th birthday.

They play regularly at the club and their mental capacity remains sharp and astute. The key to club bridge is the enjoyment of bidding and playing one or two boards in an evening better than the other players.

And of course the opportunity exists to do it every week. On the flip side are the

hands that 'got away'. Bridge as a game is challenging, but it's hugely enjoyable.



Harry Williams



Alan Perry

BARRY'S GUTTER CLEANING SERVICES



*Also cleaning of fascias, soffits, patios and driveways
* Small repairs also undertaken
Call 07966205145
barrysteptoe@yahoo.co.uk

ROOFING SERVICES ALLAN WISE
Est. over 50 years

* Roof repairs * Flat roofs
* Gutters * Chimneys
* Chimney cowls
Tel: 01628 525740
07860 493110
allangeffwise@gmail.com

Colin's Garden Services
Tel: 07884 262871

Garden Services

Grass Cutting	Hedge Cutting
Maintenance	Fencing
Patios	Turfing

TO ADVERTISE IN TARGET
CALL 01628 525415

N Gillie
Decorating Services
INTERIOR & EXTERIOR
No Job Too Big or Too Small
References Available
01494 681794
07771 521263



PT CARPENTRY
and Household Services
Design • Repair • Rebuild - just ask
Paul Thomas
Mobile : 07905 221991 E mail : ptcarpentry@live.co.uk
Carpentry - Plumbing - Plastering - Decorating - Gardening
(sub contract electrical services)

Carpentry design and repairs, bespoke furniture made to order, erecting sheds, stables, fencing, trellis, garden gates, assembling flat pack furniture, hanging doors, changing locks & door furniture, fitting security locks to doors and windows, boarding out lofts & installing loft ladders, plumbing in sinks, installing washing machines, kitchen and bathroom fitting, changing taps, tiling, grouting, putting up shelves, pictures, mirrors & curtain poles, clearing and repairing gutters, landscaping, general garden tidying, pressure washing patios, project management.....
the list goes on and on!.....

"To do the jobs that you don't have time to do !"
Mobile : 07905 221991 E mail : ptcarpentry@live.co.uk



Upper Thames Sailing Club

By Debbie Kite

RECORD NUMBERS WANT TO GO SAILING...

The membership team of Upper Thames Sailing Club earned their keep during the very successful Open Day at the end of April, with more than 200 visitors and 30 new members joining on the day.

We hope many more will follow up and join shortly, in time for all the training sessions and busy Summer programme.

Membership secretary Chris Chacksfield said "I'm optimistic that this year we'll see our membership levels at the highest ever in the club history.

"Everyone was impressed with the friendly atmosphere, the training available, and the smart new clubhouse and bar have helped too. "So thank you to all who made the day so successful – and kept me working until the early hours of the morning sorting it all out."

The training desk was busy too, especially with new members enquiring about training for both youngsters and adults.

The Saturday morning StartSail sessions are proving popular and bookings are now being taken for the RYA week-long courses in the Summer holidays.

Those training at Easter were very

fortunate with the weather and a dozen cadets aged eight to 18 gained qualifications ranging from Level 1 to Seamanship.

Club members don't just sail on the river – many compete in

regattas around the UK at regional and national level.

Fifteen-year old Ollie Meadowcroft has just been selected to sail for Great Britain, after a very windy and intense week at the Nationals in Portland. He will be crewing in a 420 dinghy at the U17 Worlds in Portugal and the Europeans in Holland.

If you are interested in finding out more about sailing (or social) membership, please contact Chris at memberships@utsc.org.uk See the website utsc.org.uk, or call in at any time the club is open.



Secondary Maths Tutor

Qualified teacher in Bourne End

- Key Stage 3 and GCSE
- AS/A Level
- Common Entrance
- UKCAT

T: 01628 531521 or 07860 405000

E: kath.acres@spadeoakfarm.com

www.spadeoakfarm.com

Visit me on Facebook Spade Oak Tutors

Bourne End Electrical



All your electrical needs catered for

Quick and efficient service

Test & Certification
New Fuse Boards
Upgrades & Repairs
Interior & Exterior wiring
Outside Security Lights
Switches & Outlets

Ring Stephen on
01628 850968
07790 546975



CRUSADER PEST CONTROL

NIGEL WALTERS

Reliable & professional service to eliminate pests

01628 481171

07855 786712

crusaderpestcontrol@hotmail.com
www.crusaderpestcontrol.co.uk



Come Sailing!

- ☛ Weekend and summer training courses for all ages
- ☛ Bar, catering and fabulous views
- ☛ Sailing and social memberships
- ☛ Call in or see www.utsc.org.uk



UPPER THAMES SAILING CLUB
Riverside, Bourne End, Bucks, SL8 5RF



Find us on the Thames Path from Bourne End Marina, or via Coldmoorholme Lane

Bourne



for Desserts

Offering quality FRESH produce
Quality locally roasted coffee & hot chocolate
Tea-Pigs breakfast and herbal teas
Patisserie range of cakes
SAVOURIES - quiche & toasties
Gelato, sundaes, milkshakes
AFTERNOON TEA for TWO
Children's parties
Eat-in or take-away

27 The Parade, Bourne End SL85SB
www.bourneforddesserts.co.uk

Hedsor Rock 'n' Roll Jukebox presents our annual



**CLASSIC BRITISH, AMERICAN, FOREIGN CARS
PICK-UPS, BIKES, TRIKES & HOTRODS SHOW**
Sunday 23rd June 2019

All classes of British cars, American cars, Pick-ups,
Hotrods, Bikes & Trikes

9am - 6pm

Saturday Afternoon 22nd June
Free overnight Camping for car
show, food van available, toilet
facilities. No need to book
just turn up.
Saturday 22nd Evening Band
The Rymatones
+ DJ Jivin George - £10 entry
7.30pm til late

- Hot Food Van
- Rocking Music played all day
- 2 Live Bands
- Bar open all day
- Ice Cream Van
- Stalls
- Ample Free parking (car park/field)
- Trade Stands available at reasonable rates
- Dog friendly venue
- No need to book, just turn up

Classic Car driver entry to show – FREE, £1 for passengers
Entry to show: Adults £5, Children under 16 & Wheelchair users FREE

HEDSOR SOCIAL CLUB - Hedsor Road, Bourne End Bucks SL8 5ES
(Next to the Flowerland Garden Centre)

For more information call George on 07721 842142 or email george.gatrell@btopenworld.com

www.justdanze.co

SUPPORTERS OF: ST TIGGYWINKLES WILDLIFE HOSPITAL & BREAST CANCER NOW



This monster crane dominates the skyline as the roof takes shape on the retirement apartments off Wharf Lane, Bourne End. This land has gone from Childs coalyard (the owners lived in a bungalow in Highfield Road) to an industrial and eventually an unoccupied site – all over the past 100 years or so.

True Engineering owned by the Lock family employed countless locals and when they closed there were a variety of small businesses on the site including the Pentagon Clinic who relocated to alongside the day care centre in Wakeman Road.

When industrial it was called a 'badly sited user' by Wycombe District Council as it was surrounded by both older Edwardian homes and new-style housing. There are memories galore shared by those who used to work in one of the many operations on the site

More recently Renaissance Homes purchased the site to build top quality retirement apartments for the 21st century. For now the crane marks the spot!

**Justin Willment
Painting & Decorating**

Specialising in all aspects of
Painting & Decorating



**01628 526 528
07840 715 444**

jwillment@hotmail.com

**CITY & GUILDS QUALIFIED
FULLY INSURED**



The Community Centre Bar

Your Bourne End bar

Cheaper drinks

Sports on a big screen

Darts and Cribbage, also monthly quiz and jazz night

Seating outside for socialising

Open for members of the Bourne End Community Association and their guests (membership starts from just £5 a year) Mondays to Thursdays 7pm to 11pm, Fridays 4pm to Midnight Saturday Middy to Midnight and Sundays Middy to 11pm

WANTED

Business Projects

Development & Investment
Opportunities

Land or property for sale
Cash purchase or joint ventures

Call and discuss all your
options in strict confidence

Leywood Estates Limited

LEYWOOD HOUSE, 47 WOODSIDE ROAD
AMERSHAM, BUCKS HP6 6AA

01494 728210

enquiries@woodley-group.co.uk

Musical marvels

Proud Bourne End dad, Jon Martin, sent in these delightful photos of his children Lily-May and George who are excelling at music at very tender ages.

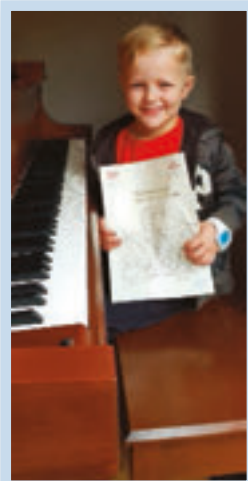
He wrote: "My seven year-old daughter has just passed her grade 1 trombone ABRSM exam and my five-year-old son has just passed his piano prep test. In fact they both had their birthdays recently so passed when they were six and four."

The siblings, who attend Clayton's School, are clearly following in their parents' footsteps.

Mum Melanie is a professional viola player in London, she attended the Royal College of Music and she enjoys a busy music career playing in orchestras and recording for film and TV at Abbey Road studios.

Jon studied French horn at the Royal Northern College of Music and is the Director of Music at Wetherby Senior School in Marylebone, London.

Jon added: "We just really value the importance of music in our kids' lives. How



it develops their creative side, which is so important.

"We noticed at an early age how they would sing along to songs in the car and learn the words so quickly. Lily-May picked up a trombone we had at home and hasn't looked back since. George plays on the piano we have at home and really enjoys it. We were really super proud of them for doing so well."

ashtonopticians
OPTOMETRISTS

Your independent practice in Flackwell Heath for value, style and personal service

- NHS and Private Eye Examinations
- Digital imaging and OCT scanning
- Behavioural Optometry & Vision Therapy
- Wide range of NHS, budget and top designer spectacles
- Contact Lenses
- Prescription and non prescription sunglasses
- Specialist sports eyewear
- All types of contact lenses fitted and supplied

01628 530420 www.ashtonopticians.co.uk
Mark Ashton BSc(Hons) MCOptom, Ros Ashton BSc(Hons) MCOptom,
1 Acorn House, Straight Bil, Flackwell Heath

Bourne End & District



Marking our first anniversary

A lot can happen in 12 months! At our AGM at the end of March, we looked back on a first year packed with activity.

By April almost 400 members had renewed their subscription and a good number of new members had joined.

And now there are 45 interest groups meeting in the local area.

Stepping down from the chairmanship of the Steering Committee which launched the local U3A last year, Roger Carter said: "The enthusiasm of people to get involved has been staggering, and I am always pleased when members say how much they enjoy having such a wide selection of activities to get involved in.

"Our groups vary from wine appreciation to mahjong, language learning to theatre trips and outings, local history to learning maths or the ukelele, ecosystems and bird watching, and dozens more."

The next monthly meeting on June 25 at 2pm in the community centre will include a talk on The Gorilla Organization. Membership (£17.50 a year) is open to anyone who is retired or semi-retired. For full details of U3A groups and how to join, visit bourneendu3a.org.uk.

By Sandra Carter



Why not Simply Walk?

Sitting down all day is as bad for health as smoking, according to the latest health message. No problem for the ladies and men who put on their walking shoes each Wednesday for the Bourne End area's Simply Walk group.

"Even for people with limited exercise ability, a regular gentle 50-minute walk is very beneficial," says Keith Pugh, who heads a team of volunteers who lead the walks. "It's also a very social activity, and since the group started three years ago, we have welcomed around 15 or 20 walkers each week with friendships quickly forming.

"We start and finish at Bourne End Library, where we enjoy a coffee together at the end of the walk." Anyone is welcome to come along at 10.15am for a 10.30 start each Wednesday.

The Bounty Cockmarsh, Bourne End
www.thebountypub.com
Call 01628 520056 for directions

Winter:
Open weekends for drinks and food.

Summer:
Open daily from noon. Food until 8pm, drinks until 11pm

Bourne End & Cookham Probus Club By John Daymond & Bill Leftwich

At our March meeting, following an enjoyable lunch, Gordon Rogers spoke on *Military Moments circa WWII*, illustrated with slides with thumbnail biographies of leading military figures both Allied and German.

We also learned one alarming RAF statistic, that of 787 aircraft lost, 483 were due to accidents not combat. A similar percentage, approaching 70 per cent, occurred with the Luftwaffe.

In April Colin Oaks, an archaeologist, took us through the culture and history of the Spartans, an intriguing warrior society in Greece which defeated the Athenians in the Peloponnesian war in 431BC. To join our Probus Club contact John Daymond on 07802 304548 or 01628 637070.

Bourne End WI By Kath Acres

Who would have thought that magic could be so motivational? Everyone was captivated in May by our speaker Simon Williams and one of our members is still cherishing her memory of her (now deflated) quiz prize of a porcupine made from a balloon. That porcupine required a lot of gifted WI mind readers to make it.

On Thursday June 6 we host William the Butler (to Aristocracy and the Royal Family). Special guest speaker Cindy Smulders is coming to tell us about the devastating impact of FND (Functional Neurological Disorder) on her Kayaking World Champion teenage daughter Georgia who lives in Bourne End.

Expect a pop-up café on Spade Oak Wharf with fab WI cakes and maybe a celeb in June to raise funds and awareness of FND.

For the fifth year Mikron Theatre Company will be performing at Spade Oak Farm as a WI fundraiser on the evening of Tuesday July 9. This year's show is *Redcoats* (all about Butlins).

It is always a sell-out (we have space for 200) so if you would like tickets (£12) email bourneendwi@yahoo.com asap.

Our Walking Netball group wiggles and walks on. The activity is accessible to everyone who can walk (no running allowed) and most of the time is spent laughing. We meet every Tuesday, midday to 1pm in the community centre (£3) and anyone is welcome to join us.

On Friday June 14 and 28 some of us will gather at Bourne For Desserts for coffee and cake, 2pm to 4pm and anybody who would like to join us is very welcome.

Our next meeting will be on Thursday June 6 at St Dunstan's Church Hall at 7.30pm. Visitors are always welcome. Enquiries to bourneendwi@yahoo.com or call 01628 531521.

Little Marlow & Well End WI By Pauline Clitheroe

In March members welcomed Gillie Jackson, chairman of the Board of Trustees of the Queen Mother's Clothing Guild, to which members have a longstanding commitment. We will be donating entries to the guild from one of the classes in our Summer Show.

In April Peter Hague spoke on *West Wycombe Park and the Dashwoods*. It was probably a marketing gimmick by the 11th Baronet to imply that the notorious Hell Fire Club met in the West Wycombe caves, because Medmenham Abbey was their usual venue.

The caves were formed when, following the failure of the harvest in 1750, the local workforce was employed to remove the chalk from the nearby hillside and use it to improve the road between West Wycombe and High Wycombe.

During the monthly Craft and Chat members decorated colourful and attractive Easter eggs.



Rotary Club of Cookham Bridge By Terry Whall

At the club's charity 'Give Away' night cheques were presented to local charity groups during a dinner at the Odney Club.

The club welcomed special guest Geoffrey Copas in appreciation of his generosity in providing the use of Marsh Meadow for the Cookham Regatta each year. Mr Copas told of his own uncle winning a race in around 1937. This year's regatta date is Saturday September 7.

Receiving a cheque, Sonia Harry from Family Intensive Care, described how the money raised by the club helps supply extras for many families. Sally Grant from Young Carers told how the Rotary Club provides a fun day out at Longridge for children who are carers.

The Thames Valley Adventure Playground was also given money to help maintain the very valuable facilities for families and children. Another cheque went to People to Places, a charity providing

transport and day trips for those unable to make their own arrangements.

Donations were also made to High Wycombe Scannappeal and Flackwell Heath & Loudwater Age Concern Day Centre.

The final cheque had already been allocated to First Responders, to provide equipment which was used to save a life on the very first day it was in operation.

Everyone was inspired by the stories told by the representatives of each charity. Cookham Bridge donations have totalled about £250k over the years.

Bourne End & Wooburn WI By Janet Spill

In April Edwin and Pam Rye gave us an update on the work of a charity in South Africa to which Edwin donates the money received for his talks. He then gave us ideas for *Seasonal Colour in the Garden* illustrated by photographs of his own garden throughout the year. As usual, a queue quickly formed to purchase the plants he had brought along.

Also in April some members visited Aston Pottery for an entertaining talk and teapot making demonstration.

We look forward to an auctioneer and valuer joining us in June and members are encouraged to bring along an item for valuation.

We meet on the second Monday of the month at 2pm in St Dunstan's Church Hall. Visitors welcome. Email beandw.wi@gmail.com

Inner Wheel of Bourne End & Cookham By Barbara Rose

In March a voluntary worker for First Responders gave us an insight into her role. They usually arrive before the paramedics, stabilise the patient and help the worried family.

She demonstrated how to use a defibrillator and how to give CPR. Two responders had to share vital equipment so our group has been keen to donate money in order for each responder to have their own equipment. These precious people are on call three evenings a week and one day every weekend.

Also in March we held a very enjoyable Charity Bridge Tea at Stubbings. At a buffet lunch at our President Mercia's home we welcomed new members Kathy Jackson and Kathy Craggs and during April a third new member, Carol Wilks.

In April we went to The Pines Hotel for a lovely afternoon tea, while in early May we joined a five-mile charity walk with the Rotary Club of Slough.

Our May meeting was the AGM and June will be the official handover of committee members along with a buffet supper. If you would like to join us for friendship and fundraising, visit www.innerwheeldistrict9.org.uk

“GET DRESSED UP” IS RNLI MESSAGE TO VOLUNTEERS



The Royal Standard up at Wooburn Common took second place.

Chairman Mike Prager told members that there were exciting times ahead with new fundraising ideas including the Lifeboat Supper during the month of October when diners at a host of local eateries would be asked to donate one pound to the RNLI.

Members were assured that the RNLI would have a presence at local events allowing members the

chance to dress in rescue boat protective clothing along with opportunities for children to use cut-outs and be pictured in sea faring gear.

Then to the serious matter of this year's message being used in RNLI publicity with the aim of *Preventing People from Drowning*.

Guy Addington, who is the RNLI's Community Safety Partner for the South East, introduced himself as the second coxswain on the Margate rescue launch. He is following in the footsteps of both his father and grandfather. Guy talked about his great love of knots. Yes

knots. And he has a library of knotting publications to prove it.

His main message was simple: "Around half of the people who get in trouble on the water never intended to be in that situation." He stressed that the RNLI needs to work together with a range of organisations where the message can be carried to those who might find themselves in difficulties. Getting help would be easier if a mobile phone was carried in a waterproof pouch and easily accessible.

Members heard that there were plans for workshops, a booklet and the aim to improve communication on the actions that can be taken to prevent drowning.

The branch has a big river on its boundary with a smaller river flowing through local towns and villages. "Know your stuff," was Guy's message along with then communicating what you know to anyone, any organisation or any school who needs to know what actions need to be taken in an emergency.

There followed a delicious buffet, a raffle and then time to chat.

The final plea was for more volunteers to support events during 2019. If you want more information about the local branch of the RNLI or being a volunteer contact Rose Start on rose@bluewater.im or call 01628 533339.

Top left: Chairman, Mike Prager, RNLI guest Guy Addington, and treasurer Kevin Hourigan. Below left: Dave Kimber with Diana Spokes and below right: Guy illustrating his love of tying knots

When Kevin Hourigan donned oilskins, wellies and helmet his collecting box attracted the most donations. "That's why we need to get dressed up when collecting," he laughingly told RNLI members at their AGM in April. The South Bucks and Thames Branch covers a wide area and the annual house-to-house collection has been replaced with day-long stints outside supermarkets, at train stations and in town centres.

Profits for the last year were around the £20,000 mark and came through 698 hours of volunteering from their 111 members. Everyone had contributed to the great result in 2018 and could feel proud of what had been achieved.

The number of collection boxes in pubs had increased with a pub in Chinnor claiming top position as it hadn't been emptied in three years!



Dunne & Waterman
CHARTERED ACCOUNTANTS

TAX RETURNS & TAX ADVICE

Based in Bourne End with an office in the City. We can prepare and submit your personal tax returns, or get you up to date with your tax quickly and efficiently, and let you know if you are paying too much tax.

We also give you tax advice; for example, if you are renting or selling a property, either in the UK or elsewhere. With careful planning you can save tax if we are involved before the transaction.

We are happy to let you have a fee quotation.

markwaterman@mdmw.london
mariedunne@mdmw.london
www.dunneandwaterman
Tel: 07598 494879 or 0203 393 2750

Need an Electrician?

SELLECK ELECTRIC
ELECTRICAL CONTRACTORS AND TESTING SPECIALISTS

S.D. & R.A. Selleck
Electrical Installations Ltd.
3 The Green, Wooburn Green, High Wycombe, Buckinghamshire, HP10 0EE
Tel: 01628 525278
Fax: 01628 810373
www.sellecks.co.uk

Wooburn Wheels
Service & Repairs, Children's Bikes, Adult Cycles, Good Selection of Accessories.

Tools, Appliances & Accessories
COMPETITIVELY PRICED: Kettles, Irons, Toasters, Hair Dryers, Coffee-Makers, Shavers, Fryers, Lamps, Cable by the metre, Hoover Bags, Plugs, Lampholders etc.

N.I.C.E.I.C. Approved
Portable Appliance Testing
All electrical installations and rewiring undertaken.

Support your local
businesses and
Target advertisers

YOGA WITH LINDA

Monday morning, Tuesday evening
and Wednesday lunchtime
Bourne End
Ring: Linda Jolliffe 07503212815

Established 1968

NEWELL & SON

20 Fennels Farm Road
Flackwell Heath



Tel: 01628 525329/524294

All Plumbing & Heating
Specialising in Bathrooms
Floor & Wall Tiling & Decorating

NO VAT ON LABOUR | Reasonable Rates
| No job too small

Graham Blake soft furnishing

- Loose covers
- Curtains
- Re-Upholstery
- Tracks & Poles

TEN YEAR GUARANTEE

For personal, helpful service, please call

Tel: 01844 261769

Mob: 07801 182400

grahamblake123@btconnect.com

www.grahamblake.com

Chiropody

Bourne End
Community Centre

Monday Mornings
07986

606814

*For the treatment of all
Foot Ailments*

Peter Moys

Local handyman

Established 2011

01628 529714

Reasonable rates agreed prior to the work

peter.moys@yahoo.co.uk

Mobile: 07502 305 894

Fully insured | Free estimates

A1 TAXI SERVICE

A FAMILY-RUN BUSINESS

01628 851466

4 | 6 | 8 Seater Vehicles Available
Local & Long Distance • Airports, Seaports & London Theatres

WWW.A1TAXISERVICE.CO.UK EST. 1968

advance
dental services

Great special offers available!
For more information give us a call
or visit the website.

New patients
welcome!

- Teeth whitening
- White fillings
- Porcelain veneers
- Crowns
- Porcelain inlays
- Bridges
- Gum care
- Private practice
- Extractions
- Root canal
- Gentle dentistry

1 Station Court • Station Road
Bourne End • Bucks • SL8 5YP
tel: 01628 525223
advancedentalservices.co.uk

BASL

BUILDING & MAINTENANCE LTD

Mathew & Paul Billingham - Seventh generation builders

t: 01628 298185 w: www.BASLbuilding.co.uk e: Mathew or Paul@BASLbuilding.co.uk

*We undertake any and all work to your home
to a high standard and cost effectively*

To advertise in *Target* call
01628 525415 or email
advertising@targetmagazine.org.uk

Call *Target* advertising on 01628 525415

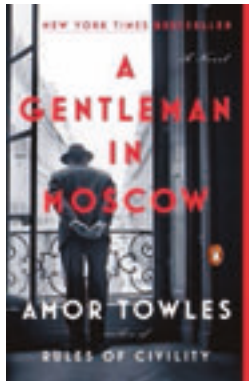
Bourne End Community Library

by Inka D'Agostino, library manager

"In my college years, I would retreat to our summer house for two weeks in June to read a novel a day. How exciting it was, after pouring my coffee and making myself comfortable on the porch, to open the next book on the roster, read the first sentences, and find myself on the platform of a train station." Amor Towles

How lovely to have the option of just leaving the world behind and reading a novel a day. Even if you haven't this luxury you do have the opportunity to come to the library and browse to your heart's content and immerse yourself in a good book.

Amor Towles is an author I discovered last year when I read *The Gentleman in Moscow*, and if you like unusual quirky reads, this is one for you. It's a story of Count Alexander Rostov who has been sentenced by a Bolshevik tribunal to house arrest in a luxury hotel for the rest of his life.



"Charming... shows that not all books about Russian aristocrats have to be full of doom and nihilism" (The Times, Books of the Year)

June and July are months when our gardens seem to be invaded by all sorts of interesting creatures. With this in mind I am pleased to announce an evening with a difference.

Virginia Cheeseman, the Bug Lady, will be entertaining us on Friday June 14 with a talk entitled *My Life as The Bug Lady* when we shall see another side to creepy crawlies.

Over the decades Virginia has been breeding a multitude of exotic bugs as pets for schools, zoos, the media and private individuals as well as working at the London Butterfly House. She will be bringing her 'pets', some of which are happy to be handled. This informative but fun evening starts at 7.30pm. Tickets from the library are £5 on the door or £4 for advance booking and include refreshments.

June's Lifestyle meeting will take place on Friday June 28 10.30am to midday when our guest speaker, Mary Nonde, will be giving a practical session on Feng Shui. Advance booking recommended, tickets £3.

Our beautiful garden is available to all during opening hours, so please don't forget to visit us, have a cup of our delicious coffee and spend chill out time reading a magazine or book.

For room hire and tickets to any of our events or information on regular classes please contact the library on lib-boe@buckscc.gov.uk or phone 01296 382415

WHERE THE WILD THINGS ARE...

Jeny Sarreti and Trisha Scott, two of the founder members of the Watercress Painters based in the historic village of Ewelme in Oxfordshire, will be exhibiting artworks at Bourne End Library from June 5 to July 1.

Going under the exhibition title 'Where the Wild Things are', many of the paintings are inspired by the beauty of the surrounding Chiltern hills and countryside.

The synergy created by the two artists is evident in their different styles.

Jeny loves the freedom and unpredictability of watercolour while experimenting with mixed media her paintings featuring the fauna and flora in the local landscape. Trisha loves colour and this is reflected in her vibrant landscapes and wildlife in both pastel and oil as well as mixed media and watercolour.

They would love you to come and visit their exhibition to cast a critical eye over their paintings and selection of lovely greeting cards.



COMMUNITY MARKET FOCUS



All about Windy Mill

Hi, I am Mellie. I've been making soaps and smelly things for an absolute age.

My smelly journey started when I was forever buying shower gels and shampoos for my lovely teenage kids (they liked their showers).

I thought I'm sure I can make these cheaper (actually not true, but that's another story). It took a while to perfect the recipes and my son Gus was dyed blue with my early attempts and my daughter Izz found out that she is sensitive to rose.

At last, to the relief of all my family, the recipes got better and that's when I thought I'd start selling. At this point in my craft journey, I came across a whole new range of blended fragrance oils and also started to make candles and reed diffusers.

So, three years ago, I decided to start selling my products. I needed a name ... Mellie Smellies was the first, but I ended up with Windy Mill. Why did I choose the name Windy Mill? Well, my interest in genealogy revealed an ancestor who lived in a windmill in the Broughty Ferry area of Dundee. I rather liked his character and his house, and the name Windy Mill felt right.

I sell mainly at craft fairs. I've been doing these for a couple of years and love chatting to everyone who visits and to the other crafters who are so very friendly. I do sell online and through Etsy as well.

The trouble with working with fragrances is that they are addictive. You are always tinkering and trying new things. This year I'm concentrating on aromatherapy products with special emphasis on wellbeing and being kind to the skin.

It's taking a while to get them ready for sale, as there are product safety reports and legislation that needs to be adhered to. But they are gradually appearing at my craft fairs and markets.

Also this year, a few of my customers have asked if I can produce dog products for them. After some research and discussion with my soap assessor regarding safety, I have produced a small range containing lavender essential oil, sea buckthorn oil and neem oil. These ingredients are purported to have calming, anti-inflammatory and anti-flea properties.

I enjoy exhibiting at the Bourne End Community Market and look forward to seeing regular and new faces at the markets in June and July and having a chat with visitors.

My Etsy shop is Windymillmelanie and my website is www.windymill.co.uk.

Instagram and Facebook is @windymilllimited

For more info about the community market which takes place on the second Saturday of the month 10am to 1pm at Bourne End Library go to

<https://www.facebook.com/BourneEndCommunityCraftMarket>
email rosieohagan@me.com or call 07989 71663

LOCAL BUILDER
C Page
30 years experience

Patios Brickwork
New Builds Fencing
Driveways Extensions

Phone Chris on
01628 529013

mobile **07887 655727**

C.O.D. GROUNDWORKS
Specialist in all types of Groundwork

- Paving
- Fencing
- Drainage
- Patio Cleaning
- Patios
- Block Paving
- Driveways
- Concreting

**NO JOB TOO SMALL
FREE ESTIMATES**
Tel: **01628 528637**
Mob: **07778 371552**

N W UPWARD
Painter and Decorator
2 Fisherman's Way, Bourne End
*Professional in the trade
for more than 40 years*
Estimates Free **01628 528921**



From the ground up
a helping hand in the garden
Local garden design, planting &
maintenance service - 01628 303130

**FOR ALL YOUR SPORTING NEEDS
COME AND VISIT OUR SUPERSTORE**



Est. 1967

TEAMWEAR SPORTSWEAR SCHOOL UNIFORM

Tel: **01628 819242** www.hawkinsport.co.uk
Unit 10a Wessex Road, Bourne End, Bucks, SL8 5DT

Stacey **Home Visiting
Foot Health
Practitioner**

A new Foot Health service
available in your area

Services provided -

- First consultation **Free**
- Routine nail care
- Hard skin, Corn and Callus
- Verrucae treatment
- Ingrowing toe nails
- Fungal nail treatment
- Elderly care home visits
- Home Visits
- Local, Professional, Friendly Service

**For further information or to
book an appointment please
contact Elizabeth Stacey on**

07817 873592
or email - lizstacey70@gmail.com
Elizabeth Stacey MCFHP MAFHP



**Community Minibus
for Hire**

**12 Comfortable Seats
Reasonable Rates
Needs own driver**

**Contact Sue
at the Community Centre**

01628 522604

R S HALL UPHOLSTERY
31 years experience
ALL UPHOLSTERY WORK UNDERTAKEN

- * Re-upholstery
- * Sofas & Chairs
- * Loose Covers
- * Antiques
- * Pubs & Clubs
- * Schools
- * Hospitals
- * Office Chairs

Large Contracts
Over 300 fabrics available
Free estimates

*Also fabrics at competitive prices,
upholstery sundries and all
sizes of foam*

Contact Bob: 07809 140988
T: 01494 461481
E: contact@rshallupholstery.co.uk
www.rshallupholstery.co.uk

**MAINTENANCE &
LANDSCAPING**

Property Maintenance, Professional
Landscaping, Fencing,
Specialist Patios,
Paving, Tree Surgery, Etc.

DAVID J KIMBER, 01628 810361 07850 124241

Past times... by Barrie Penfold



Where are the Roman artifacts?

This puzzle was highlighted by one local historian – added to by another and now seeks answers before it is too late for anyone to have memories, or reported memories, of a Roman burial mound and its artefacts.

During the building of the council estate in 1949 two coffins were unearthed containing remains from the Roman occupation. Sadly the site of the villa has never been found.

Developers acknowledged the find by calling one of the roads Roman Way and those coffins are now authenticated and in the British Museum. People will delight in saying that they looked down the hole and saw the coffins on their way back from school before being chased off by the site manager.

This puzzle relates to finds that were made back in 1905 at Eghams Green, where Millboard Road is today. It was a small hamlet that became part of Jackson's Mill. Today the mill site is where Dukes Meadow Business Park is now.

The few cottages and houses were clustered around a bend in the River Wye where it suddenly changed direction to make a swing south on its final run into the River Thames.

Its name is of Saxon ancestry and people had probably lived around there, close to the early mill, for centuries. The old bridge still exists alongside the new entrance to housing and Millboard Road.

Locals still have fond memories of the massive millboard company and its days when more than 1,000 were employed, machinery thumped out great sheets of millboard and people worked in shifts.

This was long before the site grew to become a huge operation covering a large area. Then there was a paper mill on the River Wye in the Eghams Green area and the first of many members of the Jackson family joined the company.

It seems that a gravel pit was started on the mill site to provide concrete for any building work. In excavating the pit they found Roman graves, swords and similar things that were given to Reading Museum. There is no record of these finds, so

where was the gravel pit and who knew about the finds, what they were and their importance in local history?

An enquiry was sent to Reading Museum and the response was that they had no record of such finds so the search field was widened to the Buckinghamshire Museum in Aylesbury who equally had no artefacts, but were aware of the Eghams Green site from some notes written by a Francis Colmer, historian (1873-1967), in 1934. It seems that these notes are the only account that has been written about the discovery by a historian who lived with his family in High Wycombe and specialised his research on the paper mills along the River Wye.

Francis Colmer wrote that "On the north bank of the River Thames at Bourne End were found many burials of warriors of the Anglo-Saxon period, which may possibly be connected with those on Cockmarsh. The site of these burials is along the area occupied by the railway between the level crossing at Cores End and Bourne End Station on land which was formerly part of Egham Farm* and known as Egham's Green. Jackson's Paper Mill now occupies a portion of this and it was here that the objects to be described were found in 1905.

"They represent only a small portion of the finds that were made. It is said that over this area a considerable number of skeletons were found lying at a depth of little more than a foot or two in the alluvial soil upon the ballast. They were packed closely together without any attempt apparently of orientation, some being in an extended position and most of those near the level crossing in a contracted position.

"Unfortunately all the human remains had been scattered and destroyed and the many weapons that accompanied them had been carried off by the village children. They consisted of socketed spears, knives and daggers which had a curved back and

straight cutting edge and some of them appeared to be the remains of an inlaid metal. With these were two parts of a small bronze bell with a square pierced tang, for suspension on the harness of a horse or the collar of an animal. The remains evidently belong to the Pagan period and point to a sharp conflict at this part of the river, possibly between the forces of Wessex and Mercia in the sixth or seventh century."

So where are these artefacts and, just as important, was there a burial site that today is part of a garden, buried under Furlong Road or was anything interesting found when foundations were dug for the new homes that have been built over the last few years?

And perhaps you should take a closer look at any items that need to be cleared from a relative's home. Francis Colmer knew all about the finds but there's no actual evidence in the museum. So where are they and where is the burial site?

Our pictures show a map with the location of Puzzle Row Cottages** which were there in 1901 but gone by 1911. Top left: A level crossing was here where the train line used to cross Cores End Road. Top right: Furlong Road and its houses in front of Jacksons Mill. Before upgrading it was just a footpath.

From the Bucks Herald

* In 1874 sale by auction of Eghams Green Farm, Wooburn, with 40 acres took place at the Railway Hotel.

** In 1824 Puzzle Row Cottages and barn were up for sale.

OUR LOCAL CHURCHES KEEP IN TOUCH

St Dunstan's Church, Bourne End

St Dunstan's parish has been 'clustered' with St Teresa's, Beaconsfield, since 1999. Although administered separately, both churches are served by the same priests and share services and parish activities.

In April, Mass goers were entertained after the service by the Trailblazers music group, of which a parishioner is a member.

The group is preparing to participate in the National Barbershop Championships in May.

A number of parishioners are in the cast of the Beaconsfield-based The Garden Players' Summer production of *The Tempest*, in aid of Child Bereavement UK, at Stubbings House near Maidenhead, June 18 to 22. See www.thegardenplayersweb.co.uk.

A Parish Ramble is planned for July 14.



St Paul's and St Mary's Church, Wooburn

On June 22, midday until 3pm, join us for afternoon coffee at St Paul's Church hall. Please register at www.ybothert2535.wixsite.com/website.

Revive and Refresh -- quiet reflection and prayer -- is on June 29, 10am to 1pm (bring your own lunch). Registration is required, contact Doral Hayes on 07764 304090.

Teddy parachute and fête is on the afternoon of July 7 in the church hall.

Messy Tuesdays, our holiday club/crafts for kids, take place in the church hall on August 6, 13, 20 and 27, 9.30-11.30am.

Family breakfast is on June 1 at 9.30am (none in July) at St Mary's. Dresses workshop is on June 1, 11.30am to

2.30pm (none in July) at St Mary's to make clothes for children of The Walk Centre. To book for the family breakfast and workshop visit website ybothert2535.wixsite.com/website.

An all-age service followed by fellowship lunch takes place on June 30, 9.30am. Regular services continue with Sunday Communion at 9.30am at St Paul's Church, Town Lane, Wooburn Green, HP10 0PW, with Sunday Club for children in the church hall during that service.

Friday Communion Service with lunch is at midday in St Mary's. During term time on Fridays a shorter Communion Service and lunch is at St Mary's, Glory Mill Lane, Wooburn. All ages are welcome.

For church hall hire or details of activities contact stpaulswooburnparishoffice@gmail.com or 01628 525512, or the vicarage on 01628 521209. Facebook: St-Pauls Wooburn or visit www.stpaulswooburn.org.

St John the Baptist, Little Marlow

The church is now open on Sundays until the end of September from 2.30pm to 4.30pm. Tea and coffee will be available.

Our popular Night Safari will be held again on Saturday June 1. Following a short talk at 8pm in the church we will have a guided walk to Spade Oak Nature Reserve, with refreshments available in the church. For tickets (£5 for adults and £1 for



accompanied under-16s) contact Wendy Osborne 07970 462149.

Our themed monthly 11am service continues with Sea Sunday on June 30 and Eco Sunday on July 14. We have been awarded a Silver Certificate towards becoming an 'Eco Church'.

At Music in the Manor on June 29, the gardens of Little Marlow Manor will be open from 4.30pm by kind permission of Mr and Mrs Downes, with music from 5pm until approximately 8.30pm provided by The Marlow

Town Band and the Blend Choir, a Bourne End choir singing popular songs and songs from musicals. Entry by ticket only (£12.50, under 16s free) from jeffreysmith170@gmail.com or phone 07775 957090.

Would you like to learn to ring the church bells? One person rings all three bells and you need to be reasonably mobile. We believe the arrangement is unique. To join us please contact Douglas Fergusson docsnspots@gmail.com



Cores End United Reformed Church

The church works in partnership with Trinity URC in High Wycombe and together they are exploring appointing a Community Worker to strengthen their involvement and service to the local community. A candidate is coming to meet both churches in June.

A group of local christians gathered in Cores End Church early on May 4 to praise God and to pray for the work and ministry of the church in Bourne End and beyond. The group has been meeting in different churches across the area, over many years, to support, encourage and to seek God's guidance and blessing.

A very enjoyable quiz and supper evening on May 27 raised a good amount towards the refurbishment of our toilets.

The church owns a part of the field beyond the churchyard and is planning to fence and develop it as a natural area with fruit trees, wild flowers etc. This is part of the church's focus on our care for the environment and its aim to become an 'Eco Church'.

There are plans for an 'eco concert' on October 5. A joint walk on Sunday July 21 will begin at the church car park at 2.30pm and return for tea at 4.30pm and a short Songs of Praise service at 5pm. All are welcome.

Link Up Club meets on alternate Tuesdays, 10am to midday, with speakers, music, games and outings. Table tennis takes place on Thursday afternoons. Sunday service is at 10.30am.



St Mark's Church, Bourne End

The Summer is always a time to give thanks for all that God provides and at St Mark's we are grateful for all who contribute to the life of the church. We run a 200 Club where members make a weekly payment of just £1 to join, you don't have to be a member of the church to take part.

There is a monthly prize draw with any additional



funds going towards the maintenance of the church. For details please get in touch.

Our regular activities continue with worship with Holy Communion at 10.30am every Sunday with the exception of the second Sunday of the month when our family-friendly, all age Pathway service takes place.

We are forming a small worship group; join us to explore and learn some of the most beautiful contemporary worship songs at this service. There is a Holy Communion service at 8am which is quiet and reflective.

Our popular Monday Café is open 10am to midday in the hall, do drop in.

For families Puffins, the baby and toddler group, meets every Wednesday 10am to 11.30am. Do join us every Thursday at 12.30pm for our Holy Communion service followed by a simple lunch.

This term our Bible study home group returns to the study of the book of James. For more information about this and other events visit parishesofhedsorandbourneend.co.uk, our Facebook page (St Marks Church Bourne End), Twitter @Stmark'sBE, or call Revd Janet Binns 01628 523046.

St Nicholas' Church, Hedsor

We are excited to return to Orchard Dene in Riversdale for our Riverside Fair on Saturday June 29, midday until 4.30pm, with boat rides, cream teas, children's games and the ever popular tombola.

Holy Communion is every Sunday at 9am, when Pebbles, our young church, meet separately, except the second Sunday when we have Pathway, our family service. Children are welcome at all services and to our cabin in the woods. Our fourth Sunday service is the popular Sung Communion with the choir.

The church is open on Sunday afternoons from June to September, 2.30pm to 4.30pm, so all can appreciate the tranquillity and beautiful views. A weekly meditation is each Wednesday, 1.30pm to 2pm, and also in Summer at 6.45pm. Do come along, in a busy and frantic world the silence provides calm.



Community Church

Our Sunday service at 10.30am is at Wooburn Green Primary School (refreshments from 10am), visitors welcome.

Our regular events continue with Tuesday Lunch Club at 1.30pm at the Chapel on the Green (contact Dave Bitcheno on 07894 143925 or email davebitcheno@thecommunitychurch.online).

Little Steps toddler group meets on Thursday, 10am to midday at the chapel until July 11. Dads' Little Steps for toddlers and their Dads takes place on Saturday June 1 and July 6, 10am to 11.30am at the chapel. For more details visit our new website www.thecommunitychurch.online.

Bourne End Quaker Meeting

A Quaker Meeting for Worship takes place in the Target Room at the community centre at 10am on the first Monday of every month. Everyone is welcome; we stay seated in shared silence until about 10.40am.

Anyone present may share their thoughts during this period of worship, as in any Quaker meeting. We chat briefly over tea and coffee after the meeting. For more information visit www.caqm.org.uk





David John Paul RIP

Meticulous would have been one of many affectionate terms used by friends in describing David Paul who died on January 16 aged 83. Certainly he was meticulous as a youngster at grammar school, as a bass singer performing lead roles in Mikado and HMS Pinafore, as a rugby player, training to become a nurse and then doing his national service in RAF Cosford's operating theatre.

Into the world of work David applied himself meticulously working as a salesman for a pharmaceutical company. Promotions through the company took him around the country until the role of national sales manager meant a move to Buckinghamshire. David was made sales director in 1992 and

retired in 1995. A career made by someone who knew how to apply his talents.

David and his wife, Treasure, met in 1953, as they both started nursing training. They were married in 1959 and three children were born in the 60s – Iain, Caroline and Catherine. Eight grandchildren, five boys and three girls, were regular visitors with their parents to their grandparent's home in Bourne End. Today many have medical careers – continuing the tradition of both grandparents.

Retirement for David meant a variety of roles where again his talents were applied meticulously. As a keen gardener and allotment holder friends smiled at the neat rows producing top quality vegetables that frequently took prizes at the horticultural society annual shows.

As a parish councillor for 11 years David was on the planning committee and meticulously checked out applications and read all the paperwork before a meeting. If necessary he would do further research and his committee knew that his report would be based on sound research.

Then there was a long period with the community association where he looked carefully at everything being discussed. By way of relaxation both David and Treasure joined the twinning association and formed bonds with Octeville-sur-Mer.

Sadly David started to suffer from Parkinson's Disease 15 years ago and many activities had to be restricted. Throughout David was always interested and able to contribute to daily life – his frustration came from the control of his muscles – then further complications ended his life.

Wonderful cards and letters flooded in following his death and both Treasure and the family would like to thank everyone for these loving and understanding messages.



Olive Pearsons RIP

When Olive moved into Chilterns Manor nursing home a copy of *Target* was delivered with her name on the top. Since the 1960s – when she moved to Bourne End - Olive had been a great supporter of the village. For years she was a health visitor as well as being involved in a range of other activities. In retirement she liked to keep up to date with events. There will be people in the community who remember Olive, will smile at her straightforward way of dealing with situations, and will be sad to hear that she died on April 12 at the grand age of 93.

Olive's memories of being a youngster in Blackburn, Lancashire where children wore "a liberty bodice, suspenders with rubber buttons, woollen

stockings, leather leggings and astrakhan gloves" appeared two years ago in a *Target* feature. She had memories of bombing, end of war celebrations and then being accepted for training at The London Hospital in Whitechapel.

As a midwife she provided hilarious memories like when she instructed one husband to pull the plug as his wife was in labour while in the bath. She worked long days as well as being always on call.

Training as a health visitor then moving to Bourne End gave her the chance to eventually become a founder member of the Trefoil Guild after a history of being a leader with the local Cubs. She also travelled to Guide houses all over the world. Olive will be remembered by those she met in an active and interesting life. There were smiles, laughs and tears along the way.

Geoffrey Cavell RIP



Geoff died peacefully aged 85 on Tuesday 16 April at the Riverside Nursing Home in Cookham.

Born in Kingsbury, North London on October 9, 1933 he had one older brother Peter.

Evacuation to the countryside village of Milton Bryan during the Second World War led to his desire to live rurally as an adult.

Geoff left school at 16 and went to Willesden Technical College, signing up for a GPO apprenticeship to be a telephone engineer. This led to National Service with The Royal Signals and he was quickly deployed to a conflict-ridden Suez Crisis in Egypt.

Geoff married his childhood sweetheart, Frances, in 1956. They had met in their teens at Romar School of Dance and their favourite dance was the quickstep.

In 1959 a fortuitous ride on their scooter led Geoff and Frances to Bourne End. They immediately put a deposit on a new property in Cliffords Way. Jackie and Philip were born in 1960 and 1962, went to local schools and still live in the area. Geoff served Bourne End and the surrounding villages as their telecommunications engineer, retiring in 1987.

In 1970 Geoff became one of the founder members of Bourne End Junior Sports Club of which he remained immensely proud.

As one of a number of qualified gymnastics coaches he helped young gymnasts achieve high levels in national competitions and inclusion in the Olympic squad.

As part of the sports club he was instrumental in setting up the canoeing section by borrowing a mould from the Scouts and making 12 fibreglass canoes over 12 successive weekends.

The work was done in the shed behind the telephone exchange, with additional manpower provided by parents and members of the sports club. Fran spent months looking for the kitchen scales which Geoff was using to weigh the resin!

In 1972 the family moved to a riverside property, Spade Oak Bungalow, on the Cookham side of the river. There was no road access for the first 20 out of the 40 years so daily river crossings for school and work were part of the adventure, even mid Winter.

Geoff will be greatly missed by his family including his two granddaughters Laura (24) and Scout aged 8. He was very proud of his family and will be remembered as someone who loved people, loved life, was wise, witty, generous, adventurous and supportive of others.



Tailormade trips

BEACH HOLIDAYS

honeymoons
city breaks


As your local **Travel Counsellor** with years experience in the travel industry, I can tailor-make your perfect holiday. Available at a time to suit you, I will provide an unrivalled level of personal service, taking care of all your travel needs down to the finest detail.

Everything you book with Travel Counsellors is financially protected including hotels, low cost airlines and car rental at no extra cost.

SUE CLARIDGE Travel Counsellor

T 01628 876080
E sue.claridge@travelcounsellors.com
W www.travelcounsellors.co.uk/sue.claridge

Travel Counsellors ensures complete financial protection on every booking



Bourne End's very own cinema in
the community centre.

For details of upcoming films
see page 19.

Cookham Regatta is taking shape

The ever-popular Cookham Regatta, immortalised in Stanley Spencer's painting and a fixture in the Cookham calendar, is now in preparation.

The organisers are seeking entrants for the Cookham Challenge (dragon boat and canoe cat racing) or the Club Challenge (dragon boat, canoe cat, volley ball, funny walk, tug of war).

This is very much a family event and will include a dog show, children's rides, giant truck, bungee, Zorb land balls, brass band, stalls, silent auction, classic cars, plus food and drink.

It will take place on Saturday, September 7 from 10am to 5pm, at Marsh Meadow, SL6 9SB.

The regatta is organised by the Rotary Clubs of Cookham Bridge and Marlow Thames. Details and entry forms from 01753 868449 or entry@cookhamregatta.org.uk and online at cookhamregatta.org.uk

All profits are being donated to charity.

Claytonbury returns to Bourne End

Claytonbury is a brilliant event for the PTA of Claytons Primary school as it's by far the largest fundraiser of the year (see poster below).

With school funding in dire straits, holding fundraising events are essential to give the school the ability to fund things which used to be taken for granted and thereby support the educational experience of the children as much as possible.

Last year's festival success enabled the school to purchase a new minibus which it desperately needed and has also funded learning packages for the IT suite along with many other requirements within the school.

This was only possible thanks to the community who attended or supported the event (whether present or not). The amazing feedback and compliments the school received was totally heartwarming.

This year's event is again open to everyone and Claytons would love to see lots of happy local faces who just enjoy a day out and want to support this community and the future generation within it.

If you are a local business who wishes to sponsor Claytonbury (or an individual who understands the importance of this) then please get in touch with the school. There are many sponsorship packages available.

Claytons say they would like to thank in advance, everyone for their support, goodwill and understanding of what this means to them as an event and they hope to see you there enjoying it too on the day.



CLAYTONBURY
FESTIVAL
Sat 29th June 2019 1-9pm

THE RETURN OF BOURNE END'S
FAMILY FRIENDLY FESTIVAL

LIVE MUSIC DANCE SHOWS
CIRCUS ACTS ARTS & CRAFTS
DJ WORKSHOP FAIR STALLS
SILENT DISCO FOOD STALLS
BAR & A WHOLE LOT MORE!

Buy tickets now at www.claytonbury.com
Adults: £10 Children: £5 Under 2s: Free
Tickets available on the gate subject to availability - £12 adult £5 child

Support your
community
magazine
Advertise in
Target



Your business or service needs to be in *Target*. Our advertising rates are competitive
5,000 copies are hand delivered promptly to Bourne End, Wooburn, Little Marlow
and parts of Flackwell Heath by 100 plus volunteers

Target supports its community – use *Target* to get your message to the community

In *Target* you'll find: Factual reports on local issues... Stories about local people
Details of new classes and clubs... calendar of local events

Email advertising@targetmagazine.org.uk to request a rate card or call 01628 525415

OUR GROUP MEMBERS KEEP IN TOUCH

Bucks Family History Society

On Tuesday June 11 John Frearson gives a talk on *Opening the Dore*, on the pre-First World War friendship between the sons of two Wiltshire farmers, the marriage of one son to the sister of the other, their discovery of an 18th century Grant of Arms, crested china and unexpected links with Merchant Mariner relatives. All will be revealed.

On Tuesday July 9 Dr Kathy Chater will talk about *Coroners' Inquests* when a death has been sudden and unexplained. Inquests were often held in pubs and the records are fascinating, throwing light on the way of life and manner of death of our ancestors. The National Archive holds some inquest records dating back to the 12th century.

Visitors are welcome at 7.30pm at the Eghams Room in the community centre.

Bourne End Flower Arrangement Society

On Tuesday June 4 we welcome Dr Kyoto Reagan with her interpretation of *A Fireworks Festival in Japan*. Kyoto is a very skilled demonstrator and we know there will be something special on the night.

On Tuesday July 2 Alison Mount presents *An Artist's Palette*. Alison is chairman of the Bucks, Berks and Oxon area of the National Association of Flower Arrangement Societies and we know her demonstration will be spectacular. Why not come along to the community centre at 8pm (visitors pay an entry fee).

To find out more ring Liz Payne on 01628 476641 or email bourneend@bbando.org

Bourne End Film Makers

A short and fascinating film by Steve Poole about lace making won the club competition for a documentary film. The runner-up showed the skills of wood turning filmed at the Axminster Tools and Machinery centre in High Wycombe.

Members have presented a series of informative sessions on aspects of film making: screenwriting, basic camera craft, planning, audio and animation.

On June 5 there will be a session on lighting, including how to make the most of available light.

The club will have a stall at the Community Centre Open Day on Saturday June 8. Why not come along and see what we are up to.

Members meet every first and third Wednesday evening, 7.30pm to 10pm in the Target Room at the community centre.

Marlow-Maidenhead Passengers' Association

Our AGM was addressed by representatives from Great Western Railway, Chiltern Railways, MTR Crossrail and Network Rail.

The following points were addressed: GWR intend to run four limited stop services per hour on the fast line from Maidenhead to

Paddington. Bourne End trackwork proposal is close to agreement with Network Rail. Network Rail re-railing adjacent to Furze Platt station is scheduled for November 17 with Sunday closures for a few weeks. The signalling token machines will all be replaced in June.

MTR Crossrail advised they plan to operate four off-peak and six peak services from December. Journey time will be similar to today.

Chiltern has new ticket machines installed at High Wycombe. One is being trialled allowing tickets between any two points in the UK to be bought and seat reservations to be made.

Excessive transfer time between platforms 1 and 3 at High Wycombe is being discussed with Network Rail. Dual-boarding of trains at Marylebone to increase capacity is being tested.

Marlow and District Railway Society

In March Ken Livermore spoke on UK preserved steam locos since 1968, with excellent photographs highlighting how the preservation movement has expanded over the last 50 years. April's speaker, Paul Chancellor, gave us An Eighth Colour-Rail Journey featuring pictures from 1959 taken from his vast transport photographic archive.

On June 20 at our annual meeting held jointly with the local branch of the Railway Correspondence and Travel Society (RCTS) we look forward to the second part of legendary photographer Les Nixon's 50 Years of Railway Photography. We appreciate Les coming all the way from Sheffield.

On July 18 Colin Miell presents *Travels with the LCGB in North Korea in 2014 and 2015*, featuring all sorts of modes of transport from this little known country.

Visitors are always welcome to our meetings (admission £3) at Bourne End Community Centre, 7.30pm. For information visit www.mdrs.org.uk

Bourne End Twinning Association

Stop press! All are welcome to our quiz with supper on June 15 at St Dunstan's Church hall.

In April 25 members explored the little town of Olney north of Milton Keynes – and it seems a number were surprised. Estelle Huxley writes: "I'd never been to Olney before, and I wonder why, because it's such a fascinating town. The museum was so interesting, particularly with the volunteer guides dressed in costume. Places to eat were so varied, it was difficult to choose, and there were lots of interesting shops – not forgetting the very attractive church and the history of the Olney hymns. I really enjoyed the day and would like to return – maybe to the Dickens Christmas Market."

Former association members Viv and Brian Pollock, who moved to Olney a few years ago, gave us a great welcome to the Cowper and Newton Museum, a Georgian house where the poet William Cowper once lived. Olney is famous for Amazing Grace, written by his friend John Newton, and for the first pancake race, still run annually to the church.

So what next for us? Be quick if you do not

yet have tickets for the quiz with fish and chip supper on Saturday June 15, but we shall be delighted to see you and your friends.

Tickets beforehand £8 members, £9 non-members. For information, forms or tickets contact Wendy Langford, langford@thamesinternet.com 01628 520065. Our website is www.bebta.ukgo.com, and our 'twin' is Octeville sur Mer, Normandy, at www.cjo.fr

Wye Valley Volunteers

Reflecting over the financial year with the AGM approaching, the office has seemed exceptionally busy.

Statistics show that the number of journeys (to hospitals etc) undertaken by volunteer drivers was up by over 18 per cent compared with the previous year. Our need for drivers remains urgent.

In an exciting project we have plans to replace the existing portakabin, which serves as our office, with a new one. It will be fully kitted-out to cope with the extra activities and developments in the 25 years since the current one was installed and should be completed by late Summer.

Our grateful thanks go to the community association for their co-operation towards achieving this.

If you need help do please contact us. Our services include driving, home visiting, coffee mornings, lunch club and shopping trips. Similarly please contact us if you might be interested in volunteering. Ring 01628 521027 or call into the office on any weekday morning, 10am to midday. Email enquiries@wyevalleyvolunteers.org.uk or visit wyevalleyvolunteers.org.uk.

RNLI South Bucks & Thames Branch

Our treasurer's report for the year 2018 confirmed that the branch banked £20,204 plus £875.90 for RNLI Christmas cards. These funds came from collections at supermarkets, railways, Ride London Bike Fundraising event, Lifeboat Fish Suppers held in local pubs and restaurants, street collections for May Day and Knives Beech shops.

The next collections will be on June 14 and 15 at Waitrose in Beaconsfield, and on June 22 at Morrisons, High Wycombe.

The Lifeboat Supper fundraising activity will be launched in October when local pubs and restaurants will ask diners to add one pound to their bills as an optional donation to the RNLI.

Bourne End Horticultural Society

We turn 50 years old this year and will be toasting the half century with a glass of prosecco and fish and chip supper for members at a special 'gold' themed evening on June 20. Members are being asked to wear something gold, the raffle will have 'golden' prizes and the monthly competition will be to create a gold or yellow floral display.

Margaret Marshall, chair of the society, said "Fifty years is a remarkable achievement for a society, so we wanted to give our members a celebration evening to remember. We think the fact we've been going for so long also shows just how keen local gardeners are."

The society meets at St Dunstan's Church

Hall, Wakeman Road, on the third Thursday evening of the month at 7:30 for 8pm. It's open to new members and visitors are always welcome. More at www.behorticultural.org

1st Bourne End Scouts

Are you looking for a fun activity for your son or daughter? Beavers accept boys and girls aged 6 to 8 years, while Cubs take boys and girls from 8 to 10½ years, after which it is the turn of Scouts.

At 1st Bourne End Scout group, we run a Beaver colony on both Tuesday and Wednesday afternoons, a Cub pack on both Wednesday and Thursday evenings and a Scout troop on both Monday and Friday evenings.

The Beavers have been busy preparing for the highlight of the year – camping overnight in teepees at Paccar Scout camp. Preparations included lighting fires and cooking on them, exploring the local area, putting tents up, learning about safety and first aid.

The Cub packs have recently learned about Hearing Dogs for the Deaf, looked at the night sky with Maidenhead Astronomers, and even arranged for the International Space Station to make a special flyover while they had their telescopes out.

The Cubs have been out and about too: night hikes to Marlow along the Thames Path, competing in a district swimming gala, and trekking to Chorleywood for the annual Cub Camp. This involved two nights away watching bats, cooking on open fires and messing around with friends in the woods. Good old-fashioned fun!

In April the Scouts took part in a survival camp at Pheasants Hill before hiking back to Bourne End HQ. The Scouts, as well as the Beavers and Cubs, paraded in Marlow for St George's Day on Sunday April 28. The young people rose to the occasion, dressing smartly and behaving impeccably.

As always, a huge thank you goes to the volunteers who commit their time and energy to keep 1st Bourne End Scout group going strong. If you can help run one of the sections or wish to make a donation, please contact the Group Scout Leader at besg.gsl@gmail.com

If you have a young person who wants to join, contact the membership secretary at besg.waitinglist@gmail.com.

1st Wooburn Scouts

At the St George's Day parade in Marlow the Wooburn Scouts section won the Smartest Troop prize – fantastic.

Since then the Beavers have been learning about recycling and saving energy, Cubs had a visit to a local Mosque and the Scouts took part in outdoor activities.

The County Camp in May brought together all scouting groups throughout Bucks. It was a fantastic event with loads of activities for the youngsters based around a secret agent theme with missions, night operations and evenings filled with music and entertainment.

At the Wooburn Fête on Saturday June 15, midday to 4pm, the 1st Wooburn Scouts will be serving up refreshments, hosting games and much more, so come and join us for an afternoon of fun, games and a cup of tea.

CALENDAR OF VILLAGE EVENTS

JUNE

- 2 Sun Magpie's Nest antiques fair 9.30am to 3.30pm
- 3 Mon Wooburn Pub Lunch Club, 12.30pm at The Old Bell. For a two-course lunch £10, contact has to be made for your first lunch. Ring Margaret Amos 01628 525033
- 4 Tues CentreJazz: live music from 8pm in the community centre bar. Admission £5 includes raffle
- 6 Thurs Community Centre Bar Quiz starts at 8.30pm. It's a £1 per person and the winning team gets the quiz takings from the night
- 7 Fri Bingo in the community centre. The fun starts at 2pm and 8pm
- 8 Sat Open Day at the community centre featuring many of the groups and clubs who meet here regularly. Come and see for yourself what happens at your community centre. See more on page one and the poster page 21
- 8 Sat Bourne End Community Market 10am – 1pm in the library
- 8 Sat SPORTFEST in Wooburn Park organised by Bourne End Junior Sports Club. A great day out with plenty to enjoy as well as the football
- 8 Sat *Mama Mia! Here We Go Again* (sing-along) at The New Royalty Cinema in the centre (barbecue before screening). See page 19 for details
- 14 Fri Bingo in the community centre. The fun starts at 2pm and 8pm
- 15 Sat Wooburn Fête on The Green from midday to 4pm. Games, stalls, entertainment, food and drink. Come and support this traditional annual fête. Free entry. See more page 3
- 15 Sat Race Night at the community centre, tickets £10 include a fish and chip supper. See poster page 21
- 18 Tues Drug awareness talk at Bourne End Academy, New Road, Bourne End. See poster page 10
- 21 Fri Bingo in the community centre. The fun starts at 2pm and 8pm
- 21 Fri Bourne End Junior Sports Club Annual Prizegiving will take place in Hedsor Social Club at 7pm. Families and friends will be supporting these young people as they collect awards in a range of sports
- 21 Fri Social dance with Barbara and David at 8pm. Good dancing in friendly company
- 22 Sat Family Fun Day at Wooburn Green Primary School from midday to 3pm. Stalls, hog roast, food and drink. Free entry. See poster page 10
- 23 Sun Hedsor Social Club is the place to be for all car enthusiasts. Classic British, American and foreign cars will be on display as well as pick-ups, bikes, trikes and hotrods. See poster page 27 for all the details
- 28 Fri Bingo in the community centre. The fun starts at 2pm and 8pm
- 29 Sat The residents of Alfred Court, Furlong Road are holding a barbecue and fête from 11.30am in aid of the Alzheimer's Society and Alfred Court Social Club funds. Many attractions including tombola, raffles and live music.
- 29 Sat Hedsor Fair held at Orchard Dene, Riversdale. A lovely family event with stalls, food, boat and pony rides from midday to 4.30pm. Adults £2, children free. Free parking. See more page 4
- 29 Sat Claytonbury Festival from 1pm to 9pm at Claytons Primary School, Wendover Road, Bourne End, with live music, dance shows, a silent disco and lots more. For ticket info see page 37

JULY

- 1 Mon Wooburn Pub Lunch Club, 12.30pm at The Old Bell. For a two-course lunch £10, contact has to be made for your first lunch. Ring Margaret Amos 01628 525033
- 2 Tues CentreJazz: live music from 8pm in the community centre bar. Admission £5 includes raffle
- 4 Thurs Community Centre Bar Quiz starts at 8.30 pm. It's a £1 per person and the winning team gets the quiz takings from the night
- 4 Thurs and Friday 5 and Sat 6, Forum Players present *Wandering Through La Mancha*, a tale of Don Quixote. This is a FREE event. See page 24 for details.
- 5 Fri Bingo in the community centre. The fun starts at 2pm and 8pm
- 7 Sun Magpie's Nest antiques fair at the community centre 9.30am to 3.30pm
- 12 Fri Bingo in the community centre. The fun starts at 2pm and 8pm
- 13 Sat Bourne End Community Market 10am – 1pm in the Library
- 19 Fri Bingo in the community centre. The fun starts at 2pm and 8pm
- 19 Fri Social dance with Barbara and David at 8pm. Good dancing in friendly company
- 26 Fri Bingo in the community centre. The fun starts at 2pm and 8pm
- 26 Fri *The Dish* at The New Royalty Cinema in the centre. See page 19 for details

The next issue of Target will cover August and September 2019

Email editor@targetmagazine.org.uk by Monday July 1 to get your event included in the calendar. The magazine will be published on Friday July 26

Please call into the centre and pay for your copy of Target

THE FALCON QUIZ

Set and sponsored by The Falcon Pub, Wooburn Moor

The Falcon's quiz master, Steve, set this quiz and landlady, Katie Lamb, offers a meal for two at the pub as a prize for the winner. For your chance to win, send in your answers to the questions below by email to editor@targetmagazine.org.uk (with the subject line Falcon Quiz) or write down your answers and drop them in at the community centre. Don't forget to include your contact details. The winner will be picked at random from all the correct entries on the closing date Monday July 1. Have a go... if nobody gets all the answers the winner will be the person with the most correct answers. Good luck! If you have enjoyed this quiz The Falcon has a weekly pub quiz which starts at 8.30pm on Mondays – it's £2 per person. There's money and prizes to win on the night plus a rollover cash jackpot.

Answer the question from these alphabetical initials

1. AB The mother of Queen Elizabeth 1.
2. BC Known as 'The Big Yin'.
3. CD He published *On the origin of Species by Means of Natural Selection, or the Preservation of Favoured Races in the Struggle for Life* in 1859.
4. DE One of the Busby Babes who played for Manchester United and England and was killed in the Munich air disaster plane crash in 1958.
5. EF He is a semi-retired Brazilian racing driver who won both Formula One and the Indianapolis 500 twice.
6. FG He is the Spanish painter of the 1814 paintings 'The Second of May 1808' and 'The third of May 1808' depicting the Peninsular war.
7. GH He managed the England football team for 53 matches between 1979 and 1988.
8. HI A Norwegian playwright, theatre director and poet who wrote 'Peer Gynt'.
9. IJ The first significant English architect in the early modern period who designed the Banqueting Hall in Whitehall in 1619.
10. JK He was an English Romantic poet who wrote 'Ode to a Nightingale'.
11. KL American singer song writer who achieved an Academy Award nomination for his 'Footloose' in 1984.
12. LM He had a UK No 1 Hit with 'Wan'drin Star' in 1970.
13. MN She won the most number of Grand Slam tennis titles by any player male or female.
14. NO English TV presenter, best known for presenting the breakfast TV programme 'TV-am' and was also Chairman of Luton Town football club.
15. OP Currently in prison for murdering Reeva Steenkamp in 2014.
16. PQ She played Sharon Theodopolodous in the TV series 'Birds of a Feather'.
17. RS Ringo Starr's birth name.
18. ST Starred in 'Curly Top' in 1935 'Heidi' in 1937 and 'The little Princess' in 1939.
19. TU British female comedian who appeared in 'A Kick up the Eighties', 'Three of a Kind' and 'Girls on Top'.
20. VW Designed clothes for her boyfriend to sell in a boutique on the Kings Road, Chelsea in 1974.

ANSWERS to the last quiz – 1 Banbury Cross 2 Victoria Cross 3 Christopher Cross 4 Hot Cross Bun 5 Noughts and Crosses 6 Crossbenchers 7 Crossrail 8 The Blue Cross 9 Criss Cross 10 Why did the chicken cross the road? 11 Someone who sets, solves or studies crosswords 12 Cross Fell 13 Stations of the Cross 14 Maltese Cross 15 Green Cross Code 16 Cross stitch 17 Holy Cross 18 Ferry cross the Mersey 19 Crossroads 20 Southern Cross
The winner was Philip Young, Roman Way, Bourne End



The Falcon Pub

Watery Lane,
Wooburn Moor, HP10 ONE

Tel: 01628 522752

The Falcon Beer Festival



14-16th June

Lots of
Real Ales & Ciders
Live music
Friday and Saturday evenings
Fun and Games
Festival food
And lots, lots more.

Keep an eye on the website for our
events and news
www.thefalconpub.co.uk

Welcome to **KEG** and the wonderful
world of choice.

Time to try something different. We have a range
of craft beers and gin, wines and cider.

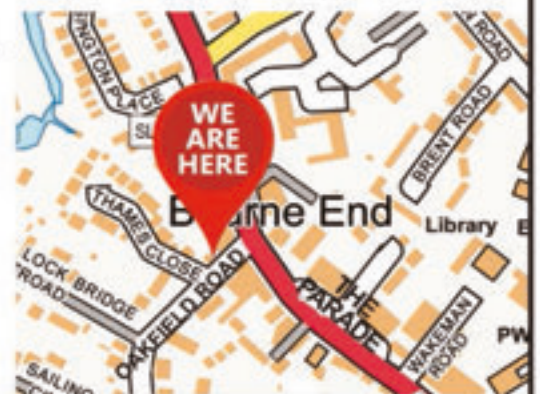
Let your taste buds be excited by the
variety on offer.

- * Seven craft keg beers and two local cask ales
on draught at all times
- * Real cider and unusual gin varieties

Try a free taste of our beer or cider before you buy.

And use one of growlers to take home and share your favourite.

We play vinyl at KEG and we're happy to play your records.



Open Monday to Thursday 11am to 9pm.
Friday 11am to 10pm.
Saturday 11am to 11pm. Sunday midday to 6pm
12 Oakfield Road, Bourne End, SL8 5QN

CRAFT BEER
TASTING BAR

01628 529369

info@kegcraftbeer.co.uk