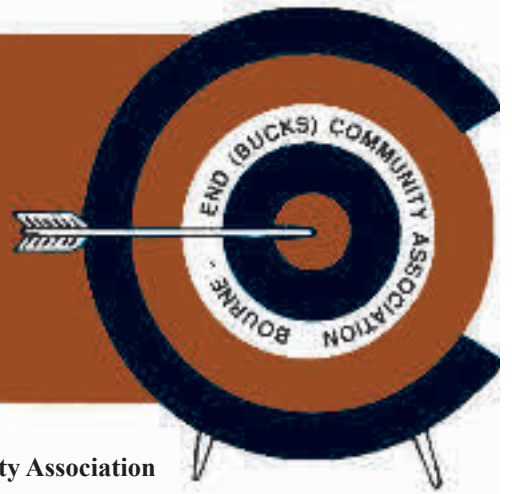


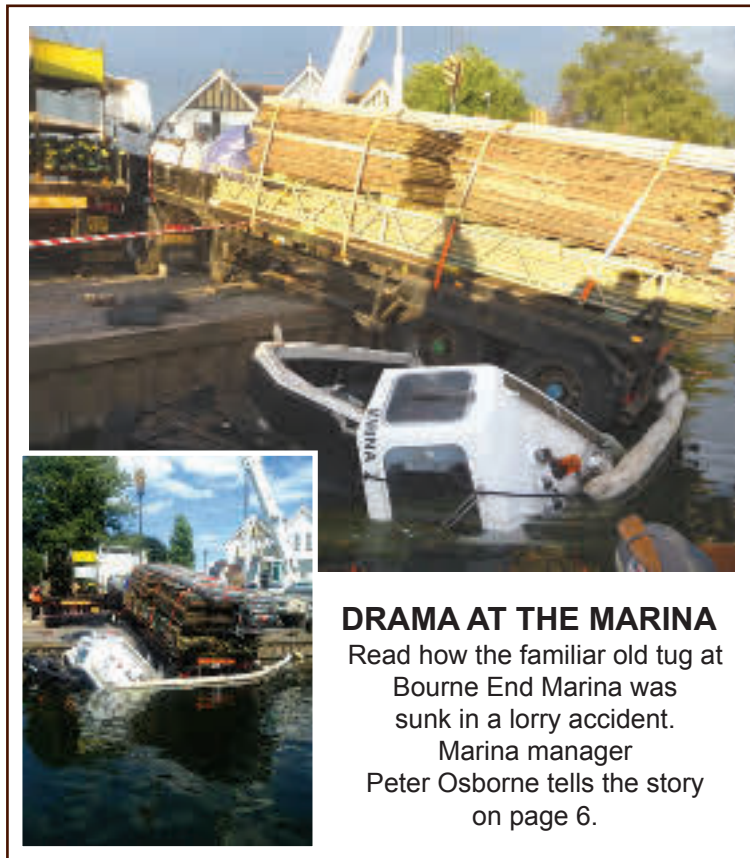
# target



VOL.49 No5  
OCT/NOV 2013

50<sub>p</sub> The Journal of Bourne End (Bucks) Community Association

## VOTE VOTE VOTE - We need your votes!



### DRAMA AT THE MARINA

Read how the familiar old tug at Bourne End Marina was sunk in a lorry accident. Marina manager Peter Osborne tells the story on page 6.

Our grant application to the Lloyds Bank community fund is now on the shortlist. Now it's down to you. The final decision is made by public vote and we hope that you will be voting for Bourne End Community Association.

Back in May we were delighted to hear that our local branch of Lloyds Bank had put the community association forward for a grant from their annual community fund. Did we have a project that would benefit from a grant of £3,000?

"Yes" was our immediate reply. The project would be to make our sound and lighting systems more adaptable and easy to use by the wide range of clubs and groups who meet at the community centre.

From flower arrangers to keep fit leaders, from singers to small bands and for rehearsals or auditions.

Technology at the flick of a switch adds to any performance.

We would also like to upgrade our hearing loop to a modern system thereby improving audience enjoyment of plays and shows. The technology is out there and it would add so much to what is available at the community centre.



So, please, make your vote count. There will be details in the centre about all the ways to vote. You'll also find it on our website at [www.bourneendbucks.com](http://www.bourneendbucks.com)

Use the link below if you want to vote online. Call into Lloyds Bank and vote there. They will also have an update of votes cast in the bank. Encourage your friends and family to vote. Your vote really will count!

To cast your vote online go to:

[https://communityfund.lloydsbank.com/voting/cf\\_org\\_vote\\_profile.asp?cfi=98AE1E](https://communityfund.lloydsbank.com/voting/cf_org_vote_profile.asp?cfi=98AE1E)

### CONTENTS

- 2 Bull's Eye
- 3 Wooburn Residents Association
- 6 Marina Life
- 8 Wooburn & Bourne End Parish Council
- 10 Your Letters
- 13 Local Lives - Barry Kwok of Kongs
- 16 Headway's plans
- 18 The Hawthornes, Wooburn Green
- 20 Useful local numbers
- 25 Win your name on the Bourne End bridge
- 34 Past times... our history page
- 39 Calendar of local events



*Meet the Volunteer Bureau's appeal minibus. After 13 years and thousands of miles the present minibus needs replacing. Read about their appeal for £25,000 plus and see if you can help their fundraising. Details on page 38.*





Target magazine is published by Bourne End (Bucks) Community Association and distributed free to over 5,000 homes in the local area. The distribution network includes Bourne End and Wooburn Green as well as the outlying hamlets of Hedsor, Well End, Little Marlow, Cores End, Upper Bourne End, Wooburn Common and Wooburn Moor.

**Bourne End (Bucks) Community Association**

The Centre, Wakeman Road, Bourne End, Bucks SL8 5SX  
 Telephone: 01628 522604 & 527502  
 Office Hours: Mon - Fri 8am to 4pm  
 Centre Manager: Simon Greenwood

Visit: [www.bourneendbucks.com](http://www.bourneendbucks.com) for current information or email [office@bebca.org.uk](mailto:office@bebca.org.uk)

**Editor**

Debra Aspinall  
 Tel: 07881 558027  
[editor@targetmagazine.org.uk](mailto:editor@targetmagazine.org.uk)

**Managing Editor & Distribution**

Barrie Penfold  
 Tel: 01628 525415  
 email: [managingeditor@targetmagazine.org.uk](mailto:managingeditor@targetmagazine.org.uk)

**Advertising & Production**

Barrie Penfold  
 Tel: 01628 525415  
[advertising@targetmagazine.org.uk](mailto:advertising@targetmagazine.org.uk)  
 Our advertising rate card is on [www.bourneendbucks.com](http://www.bourneendbucks.com). Click on Community Association, then Target.

**Copy editing and proof reading**

Jane Macintyre and Sandra Carter

**Printers**

Gpex, Pinstone Way,  
 Gerrards Cross SL9 7BJ  
 Telephone: 01753 887450



All material appearing in Target is the copyright of Bourne End (Bucks) Community Association. The Editor reserves the right to select letters and reports for publication and to edit for grammar, style and length.

# BULL'S EYE

Once again my Bullseye has a wildlife angle. Check out the letters on page 10 for the continuing red kite saga. Right now I want to share the story of Richard and Jack. Richard Webb is an old pal who lives on Riversdale with a garden leading down to the Thames. He was out on his boat in early September when he spotted what at first looked like a large dog swimming in the water.

He says: "I soon realised that it wasn't a dog and that it was distinctly rodent-like. I decided that it was perhaps a coypu, but as it came really close to the boat I saw with shock that it was longer than a metre from nose to the end of its rump."

The animal turned out to be a capybara, a creature normally only seen in South America. Or zoos.

Richard wasn't the only person to see it of course, there were reports in the paper about Jack, the capybara that had escaped from Lady McAlpine's animal sanctuary at Fawley Hill estate, between Marlow and Henley back in June. He had been spotted at Hambledon prior to his Bourne End visit.

Despite reports in the local paper that Jack had been captured and returned to his mate at the sanctuary weeks ago, as I write this in mid September he is still at large.

But don't panic. He is vegetarian.

The sanctuary told Richard: "He is being well tracked and we COULD pick him up but he knows where the river is and would just climb the fence again (capybaras don't climb but this one does!) and go back to the big playground. We are sure he will potter back up here when it gets too cold or he misses his wife. If not - we WILL go and collect him."

Capybaras are the largest rodents on the planet, weighing on average from 35 to 66 kg and standing up to 0.6 metres at the shoulder, with a length of about 1.2 metres. They look like a cross between a Guinea-pig and a Hippopotamus.

Apparently they graze peacefully on lush grass and aquatic vegetation usually only popping out onto dry land to rest and bask in the sun. And they usually scarp when

spotted. In his natural habitat Jack's worst enemies would be the Puma and the Jaguar.

In Bourne End it's likely to be men with nets!

Our pictures show Jack in the water at Bourne End and another capybara so you know what to look out for!



**Debra Aspinall, Editor**

## WANTED...

Your leftover holiday coins and notes!

Bourne End Community Association is once more doing a collection of your unwanted foreign coins and notes. Please check old purses, holiday bags and pockets for odd bits of change. They won't be much value, but all added together it can really add up.



All the money raised will go into YOUR community centre's running costs to keep this a thriving heart of the village. Please put in an envelope or plastic bag and hand in at the reception desk.

## ABOUT TARGET

Target magazine was launched in 1964 to provide information about the new Bourne End Community Association, with the name referring to the money required to build a new community centre. Over the years the magazine has grown, and its distribution area has been extended as the population has expanded through Bourne End, Wooburn Green and the surrounding villages.

Bourne End Community Association was formed in 1962 by local people who wanted a social centre to meet the needs of a growing community. Fund raising and determination saw the community centre open in Wakeman Road on October 28, 1967. Another hall was added a few years later and constant improvements have been made over the years.

See pages 36-39 for more information on the facilities and activities available at the community centre.



# WOOBURN RESIDENTS ASSOCIATION

By Sue Rogers  
Chairman

## The Future of the Wooburns – Community Led Plan

We were delighted to meet our local MP, Dominic Grieve, at the Meadows School Centenary Fair (after we had taken part in Musical Statues!) and were able to tell him about our work on a Community Led Plan for the Wooburns.

Dominic said "It is very good news to hear that the people of Wooburn are making the commitment to undertake a Community Led Plan.

"In 2011 the government passed legislation called the Localism Act. This introduced a range of measures intended to reduce the power of the state and provide greater opportunities for local communities to determine their own future and do more to help themselves.

"A Community Led Plan remains one of the best approaches for bringing people in your community together, researching local needs and aspirations and agreeing upon a range of actions that will benefit everyone in your area. The Localism agenda provides new opportunities for making sure that actions in your plan get delivered where they require formal recognition or support from your local authority. I wish you well with your Plan."



MP Dominic Grieve discusses the Community Led Plan with Margaret Amos, Secretary (right), and Maggi Fraser, Treasurer of WRA

## Questionnaire

A questionnaire will drop through your letterbox late September/beginning of October and has to be returned by the end of October. It will be asking for your thoughts and suggestions on such issues in the Wooburns as: public facilities, parking/traffic/transport in the area, community services, community events and housing developments.

If you care about the future of our village, don't forget to have your say and fill in the questionnaire. It will help greatly with analysis if you fill it in online at: <https://www.surveymonkey.com/s/G22L3XB>. It will only take you ten minutes to complete.

## Christmas Lights Switch On Saturday November 23, 4pm

Christmas celebrations will start here! With the next *Target* delivery being after this date, it is regrettably necessary to be writing about Christmas events on this beautiful day! All are welcome at The Wooburn Club for mulled wine and mince pies and to listen to a medley of Christmas music sung around the Christmas Tree. Following this, there is a film for the children. Of course Father Christmas will be joining us. Our event is FREE and open to all. Do join us!

The evening entertainment at The Wooburn Club on Saturday November 23 is a UB40 tribute band, but tickets have to be purchased for this – please contact The Wooburn Club direct on 01628 520772.

## Blooming Great Tea Party

This event, in aid of Marie Curie Cancer Care, was held on Sunday July 7. The event was organised jointly by Wooburn Residents' Association and The Wooburn Club and was well supported despite competing with the men's tennis final at Wimbledon.

Dominic Grieve, MP, and his wife Caroline attended and there was live music and a bouncy castle in the garden. Delicious homemade cakes were available for a donation so we were able to send £335 to this very worthwhile cause.

## Wooburn Residents' Website

We are currently developing a website. The objective is to inform the residents of the Wooburns what WRA does and to endeavour to create a more connected and stronger community. It is hoped to launch the website in the autumn.

## Our Bi-monthly Meetings

We are a group of friendly people who meet alternate months on the second Monday of the month, at 8pm, in The Wooburn Club on Wooburn Green. The next meeting is on Monday November 4. All are welcome.

*Continued page 4*

# MARTIN VEHICLE SERVICING ADAMS

## YOUR LOCAL MOT SPECIALIST

A friendly family-run business with 30 years experience

Servicing all cars, new and old  
also light commercial vehicles.

- General car repairs and maintenance
  - Free courtesy car available
- Tyres, exhausts and batteries supplied and fitted
- Latest diagnostic equipment for all makes of vehicle
  - Air conditioning service available

## 01628 850000

email: [info@mavs.co.uk](mailto:info@mavs.co.uk)

Alexander House, Wessex Industrial Estate, Bourne End, Bucks, SL8 5DT



**Support local shops and businesses**

**Cycle Path between Wooburn and Bourne End**

Progress has been made on the proposed cycle path along the disused railway between Bourne End and Wooburn. A total of 116 letters of support have been delivered to Wycombe District Council (many from people associated with St Paul's School) and a petition has been delivered to Bucks County Council Transport Committee.

Furthermore a promising meeting has been held with one of the landowners.

For those of you who have not followed this story, the proposal for the creation of a cycle path on the stretch of dismantled railway has been on-going for years. Although at several times the path has come close to being agreed, several concerns from residents' associations, landowners, Sustrans and councils have delayed proceedings. Sustrans, a national charity for the creation of cycleways, is now taking the lead on talks.

Positive talks have now been held with a representative for a major landowner through whose land the route will pass. There was great support for the creation of the cycle way, but it was stressed that assurances would be needed so that the best interests of the landowner and more specifically the associated farming activities are considered.

We hope to be able to update you through *Target* magazine as and when we have more news, but overall things finally look to be cycling in the right direction!

**Future of Our Village Forum (FoOV) Bourne End**

The next AGM of FoOV will be held in mid-November when a new chairman will be elected in accordance with the rules. It will be preceded by a public meeting where your views can be expressed.

At the June meeting, parking and speeding in the village were discussed. Upper Hedsor Road has applied for a 20mph zone which is currently in the assessment phase. FoOV voted to support the request by Furlong Road residents for a 20mph zone in Furlong Road.

Parking issues were discussed at length and details of roads in the village with perceived parking problems were passed to the Local Community Partnership together with details of junctions where it was thought the introduction or extension of yellow lines would either allow freer movement at the junction or reduce potential traffic hazards. The LCP have now commissioned a parking review for those roads highlighted together with other such roads within the LCP area.

A decision was also taken for members of FoOV to have an introduction to Community Speed Check. This involves local volunteers monitoring speed levels within the village and is scheduled for September. Then volunteers will be able to monitor our roads.

FoOV has forwarded a request to the Local Community Partnership to consider redesigning the junction at Blind Lane and Marlow Road to accommodate two exit lanes from Blind Lane.

FoOV recently hosted an initial Cops and Coffee meeting with Neighbourhood Inspector, Scott Messenger, who has taken up a post at Marlow Police Station. We were able to present Scott with the Bourne End Community Led Plan and discussed the viability of CCTV in the area and also the enforcement of traffic and parking violations.

A working party has been set up to progress a Neighbourhood Plan. If it is produced, it would be voted on by all Bourne End residents. Any residents interested in being involved in this Working Party please contact FoOV.

The FoOV web site is up and running at [www.bucksvoice.net/foov](http://www.bucksvoice.net/foov) and will contain details of the AGM. FoOV can be contacted through its e-mail address [villageforum@yahoo.com](mailto:villageforum@yahoo.com) or by speaking to Janet Gould (secretary) on 01628 524122.

Report by Janet Gould and David Langford

**Classic Beauty**  
for  
Beauty treatment from fully qualified and caring therapists  
Using top quality products from  
*Pridara* Skin care, *Caci* non surgical facial and body treatment  
*Jessica* manicure and pedicure  
The unique and hygienic *Phd* waxing system  
Open 9am until 8pm most nights  
17a Sobo Mill, Wooburn Green Tel: 01628 850688

**P Maxwell**  
**Roofing**  
All aspects of quality roofing undertaken by 25+ years experienced local roofer  
Tel: 01628 810357  
Mobile: 07968 491574

**HOME PC HELP**  
• All PC/networking problems  
• No callout charge  
• No fix – no fee  
• 35+ yrs experience  
For friendly, personal advice call  
01628 630096  
or 0778811 3279  
(7 days inc evenings)  
[www.homepchelp.org](http://www.homepchelp.org)

**CHATTELWORTH LIMITED**  
**CONSTRUCTION**  
All aspects of general building works:  
\*Extensions/Alterations \*Renovations \*Carpentry/Joinery  
\*Brickwork/Paving \*Plastering \*Commercial & Domestic  
**FULL DECORATING SERVICES**  
\*Painting \*Internal/External \*Wallpapering \*Commercial & Domestic  
**GENERAL**  
\*Roofing/Slating/Felting \*General Maintenance  
**PURPOSE MADE JOINERY**  
\*All aspects of purpose-made joinery from our own in-house workshop  
**MONARCH** windows, doors & conservatories  
also \*Plastic Fascia \*Barge Boards & Cladding \*Guttering  
A first class service at very competitive prices, call now for a no obligation quotation  
*A members of the Federation of Master Builders and FMB (Masterbond) Warranty Scheme*  
Chattelworth Works,  
95a Queens Road, High Wycombe, Bucks HP13 6AH  
Tel/Fax 01494 461544

**SAXONS**  
2 Furlong Road  
Bourne End  
Bucks  
SL8 5DG  
Come and visit our London trained professional stylists working to the highest standards  
Whether you require advice on cutting or colour techniques  
Saxons is the salon to be seen at!  
Open Monday – Saturday  
9am – Late (by request)  
Saxons welcomes your call  
01628 524255

# Breeze

Ladies Fashions & Accessories

Come & Browse

Relaxed & Friendly Atmosphere

**01628 520446**

49 The Parade, Bourne End

## For Hire - Two Halls & kitchen facilities

Ideal for children's parties; aerobics; dancing; ballet classes; meetings, etc.  
Contact Marguerite on 01628 819067  
Ample parking @ Cores End Church

## ABSOLUTE CLEANING

Windows & Gutters  
Domestic & Commercial

Ring Mark Holt

**0791 2985500**



**Another Answer**  
Books and Accounts

Efficient, Friendly and Local  
Call Sylvia Bourhill MAAT, MICB, PMDip

**07740 984 019**

sylvia@anotheranswer.co.uk  
www.anotheranswer.co.uk

aat

Entity formed in England and registered by  
No. 08007890 Number 0074



INDIVIDUALS • SOLE TRADER • SMALL BUSINESS  
Bookkeeping • Payroll • VAT • Tax Returns • Accounts

## A. Stride



Heating & Plumbing  
Roofing

General Building

Painting & Decorating

Replastering & Guttering  
Service

Estimates Given Free

Telephone: 01494 440219

Mobile 07973 439781

## HUGHES

**BUILDERS MERCHANTS**

CALL IN FOR A FRIENDLY, PERSONAL  
AND LOCAL SERVICE

BRICKS, DIY SUPPLIES, BLOCKS,  
AGGREGATES, PAVING SLABS,  
TIMBER, CALOR GAS, PAINT,  
SALT and COAL

**01628 522022**

24 Whitepit Lane, Flackwell Heath, Bucks.

## 11 PLUS TUITION

\*For the New 11+ Test\*

Experienced primary teachers in  
Bourne End

01628 528455 / 521828

www.11plusacademy.com

## ARNOLD FUNERAL SERVICE

Private family business.  
Private Chapel of Rest.  
Traditional and Alternative Funerals.  
Home arrangements by appointment.  
Pre-payment plans available.

891 London Road, High Wycombe  
01494 472572

38 Oak End Way, Gerrards Cross  
01753 891892

32 Gregories Road, Beaconsfield  
01494 685000

The Old Forge, Wethered Road, Martow  
01628 898866

273 Farnham Road, Slough  
01753 535556

www.arnold-funerals.co.uk

**24 HOUR SERVICE**

**We'll open it now!**

**SECURE HOMES** **30 MINUTE RESPONSE**

**UPVC LOCK SPECIALISTS**

- UPVC
- CHUBB
- YALE
- UNION
- ERA
- LEGGE
- ASEC
- VIRO
- ABLOY
- CISA
- ASSA

**All Domestic & Commercial Lock Problems**  
Solved by your Trusted & Reliable Family Business

- POLICE RECOMMENDED AND INSURANCE APPROVED LOCKS SUPPLIED & FITTED
- ALL TYPES OF DOOR & WINDOW LOCKS FITTED, OPENED, REPLACED & REPAIRED

EST. OVER 33 YEARS  
TRUST IN EXPERIENCE

Chubb Locks Yale Union

7 DAYS A WEEK  
24 HOUR SERVICE  
365 DAYS A YEAR

We will give you a competitive **FULL QUOTE** before we start any locksmith work

01628 528433  
Or if line busy: MOBILE  
07831 487222

www.allsecurehomes.co.uk  
10 Thames Close, Bourne End Bucks SL8 5QJ

FREE Advice, Surveys & Estimates

**TALK TO A LOCAL LOCKSMITH ... not a Call Centre!**

Please support Target advertisers



# Marina Life with Peter Osborne



Well, what a summer it has been. We had hot weather, loads of boats and people on the river, and a tug that sank due to the cargo on board being slightly excessive at almost 20 tonnes!

All I did was take a couple of days off work and on the second day I received a call from Matty to say that a scaffold lorry had "landed" on the tug and that it had sunk. It took a few minutes for me to realise he was not joking.

Our tug had been moored awaiting repairs by the mechanic, Steve Dean, when a lorry arrived to be loaded with scaffolding from the bridge works. The driver reversed the trailer down the side of the crane and then took the tractor unit away to fetch another one. Our guy, Chaos, then craned the scaffold from a barge onto the trailer. The driver reappeared, offloaded the additional trailer, reconnected to the loaded one and, having attached all the cables, released the brake on the trailer.

At this point the trailer rolled off the wharf and landed on our tug. It is unknown why this

happened. The lorry driver was lucky that the tug was there as it prevented the lorry landing in the river. Our tug, supporting the trailer, sank and rested on the river bed. The result of this was that a very large crane was summoned and the lorry was lifted back onto land. The boys did a fair amount of overtime, especially Chaos who worked until midnight.

Once the lorry was safely ashore, Chaos had to raise the tug using our own crane and pump the water out of her. Steve Dean, the mechanic, gave him a hand and, once pumped out, the tug floated and thankfully was not taking in water. Thank you Steve, Chaos and Matty for the extra hours you put in to make the situation safe!

During the salvage works that took a good few hours, many onlookers came down to the marina to see what was going on and the Bounty had a bumper night as the crowds enjoyed a beer or two whilst watching the excitement from across the river. The lifting up of the trailer was greeted by a massive roar of approval followed by a massive rush to the bar, Dave is unsure as to why the bar did not collapse under the extreme pressure.

The damage to the tug was bent metal as well as damage to the cuddy and engine.

Surprisingly, the hull was not damaged, not even bent or twisted. The insurance company accepted liability and we have now been asked to obtain estimates to repair our tug. Once she is rebuilt it has been suggested we rename her "TUGTANIC"? What do you think?

The tug is used nearly every day and whilst she is out of service it brings home to us how much we rely on her. Guy at Wootten's Boatyard has agreed to charter his tug to us until our own is back in service for which we are very grateful.

One thing that amazed me about the whole incident was the speed that the news spread on the internet and the emotions that were being expressed. Given that the tug has been at the marina over 50 years it would seem that she is a local character. Had she been a goner people were talking about holding a wake at the Bounty as she was towed away, a Viking burial was even mentioned. Possibly the majority of

people living in Bourne End have never known the marina without the tug - scary.

Tom Jones, who used to own the Marina and who originally bought the tug, found her in a scrap yard in Southend. He estimates her current age at between 90 to 100 years! She spent her formative years on the canals. Look out for the update in my next missive.

It was a very busy season for us all. We aren't sorry it has quietened down a bit as we were all feeling the pressure, working earlier and later than our published hours.

During the summer months we need to be flexible due to the weather dependency of the river industry. The sales taken from the river this season have been good and have made up for the poor start of the year when we believed it would rain forever, mind you we had to work for it!

It's the time of year when we say sad farewells to two members of staff. Steve Carol has done a great job looking after the car park at weekends, we very much hope that he will come back to us next year, please Steve, come back. Jack Osborne has completed his fourth year as the Saturday boy and will not be back as he drifts off to University in Bournemouth to study forensic science, good luck Jack.

It is sad for me as Jack and his brother Tom have given the marina seven years of service between them and I have no more known, or reported, offspring to carry on the tradition. If there are any 16+ year old lads out there who believe they are related to me please step forward!

Some sad news to impart... the Bounty is now closed for the winter until April. The good news is it's open at weekends during this period. A good winter cruising destination should the river conditions permit. Of course we will be open so you can combine your winter fuel top-up with a pub lunch!

Until the next time.

**Peter Osborne**  
Marina Manager



**PERSONAL TRAINING**

Fed Up Being Overweight & Unfit?

Want To Kick Start Or Improve Your Fitness Regime?

I Can Help You!

Fully Qualified Personal Trainer  
Specializing in Adult & Childhood Obesity

For A Free Consultation Call or text  
Jacqui Jones  
**07595223314**  
Email  
[Jacqui@jacquijonespersonalfitness.co.uk](mailto:Jacqui@jacquijonespersonalfitness.co.uk)  
Train at Home or at Private Studio  
In Flackwell Heath

**Sara Mayne Lic Ac MBAcC**

**Tai Chi ~ Qi Gong ~ Yoga**

**Weekly daytime & evening classes**  
Weekend half day courses



**For further information and to book**  
**Phone: 01628 527007      Mobile: 07732 705644**  
**Email: saramayne@btconnect.com**

**C.O.D.GROUNDWORKS**

**Specialists in all types of Groundwork**

- \* Paving
- \* Fencing
- \* Drainage
- \* Patio Cleaning
- \* Patios
- \* Block Paving
- \* Driveways
- \* Concreting

**NO JOB TOO SMALL**  
**FREE ESTIMATES**  
**Tel: 01628 528637**  
**Mobile: 07778 371552**



## On The Thames Restaurant & Bar



### Autumn Offers

Monday-Thursday come and enjoy our set menu for just  
**£9.95** for 2 courses Lunch or Dinner usually £13.95

---

Kids eat for half price lunch or dinner  
(excluding Friday & Saturday Evening)

---

Our Ritzy Afternoon Teas are available Saturday & Sunday  
from just £14.95(advance booking required)

---

### Christmas is coming to OTT

We are opening on Christmas day & Boxing Day this year  
so why not bring your family down for a Traditional Christmas  
meal with a view and enjoy a relaxing walk along the river  
to finish your day (£55 per head see our website for details)

See Our Website for Menus & Opening Times  
[www.ottrestaurant.co.uk](http://www.ottrestaurant.co.uk)

Call us on 01628 531111 & we will be happy to answer any questions or take your booking.  
Please note we do not take bookings via email.



parties made up of members of the full council who will look at biodiversity in the parish and devolvement of services from Bucks County Council.

Devolvement of services is where the parish council look to see if they are able to take on certain jobs that Bucks County Council currently undertakes on our behalf.

The working parties will then hold meetings to elect a chairman and decide terms of reference (these are the rules that each committee set to look at what needs doing). When this is done each party reports back to the main Open Spaces/Full Council Committee with their recommendations.

### Working Parties

The parish council has recently set up two sets of working parties. The first set consists of four working parties to investigate improvements that could be made to the Open Spaces areas within the parish.

These working parties consist of members of the Open Spaces Committee who will visit the areas concerned and make suggestions for possible improvements. Each working party will look at a specific area/item in the parish including; cemetery improvements, Wooburn Park and car park improvements, play equipment and safety surfacing, and benches and advisory notice boards.

The second set consists of two working

### Wooburn Green Village Sign Working Party

Cllrs Kate Airley, Michael Reeves and Dave Airley are delighted that the final phase of the project has now been completed. The final touch was the placing of five large barrel tubs planted with large, conical shaped buxus around the triangle (see photo above).

Many thanks to our groundsman Roland for his help with the heavy lifting and planting.

### Dog Waste Bin

Due to ongoing problems with the dog waste bin at Dinnie's Riverside the councillors decided to swap the current

bin for a larger one. The new bin is green so will blend in with the area and will be installed in the very near future. The parish council would like to thank those of you who clean up after your dogs and use the dog bins provided. This service is provided to keep the green areas clean of dog waste and there really is no excuse for not using it. We have a limited supply of free dog waste bags in the office on Town Lane so if you are passing call in and pick up a few.

### Trees and Shrubs

Our groundsman has been kept busy with the excess growth that the warm weather has produced. You may have seen him around the parish cutting back trees and hedges. He has also removed the dead tree that fell on the grassy area in Town Lane. I think you will all agree that the parish is looking good at the moment and it is fortunate that the weather has been fine for so long for him to be able to crack on and do the jobs in hand.

### Meeting Dates 2013:

**Full Council: October 22, November 26**  
**Open Spaces, Allotments & Burials: October 1, November 5**

**Planning, Highways & Lighting: October 2, October 23, November 13**  
**All meetings start at 7.30pm.**

*Normal Parish Council Office opening hours are from 9am to 5pm each day. Please call 01628 522827 if you have any queries, alternatively email the office at [clerk@wooburnparish.gov.uk](mailto:clerk@wooburnparish.gov.uk) or visit our website for information on [www.wooburnparish.gov.uk](http://www.wooburnparish.gov.uk)*



**HAND MADE FURNITURE**

Architectural woodwork, furniture, antique restoration, panelling, staircases, gilding, lettering, woodcarving, churchwork, sculpture, interior design and free advice.

**LILLYFEE WOODCARVING STUDIO**

Lillyfee Farm Lane, Wooburn Common, Bucks HP10 0LL  
Tel: 01494 671690  
*Studio open for visits by appointment*

**WOODCARVING COURSES**

Take a new direction and create beauty under the guidance of experts. Call the number above for dates and details.



**Casa Fresco Cleaning Services**

*Raising the standard in domestic cleaning*

- \* Regular cleaning, weekly, bi-weekly or monthly
- \* End of tenancy cleans
- \* Spring cleans
- \* Quality, vetted staff with smart uniforms
- \* 1st class oven and carpet cleaning service

Call Jenny or Chris on 01628 521497  
[www.casa-fresco-cleaning.co.uk](http://www.casa-fresco-cleaning.co.uk)



**COMPUTAFORM**

Your local supplier for all your Home & Office needs

We pride ourselves on giving a friendly first class service with a personal touch

Computer Media • Stationery • Hardware / Software • Furniture • Ink / Toners • Paper • Print etc

**FREE Next Day Delivery**

Call us Now on **0208 423 5005**

Fennels Lodge, St Peters Close, LOUDWATER, HP11 1JT  
[www.computaform.co.uk](http://www.computaform.co.uk)  
RRP Prices shown. Please call for HUGE discounts



## Caspar Taylor sculptor

*Inspired by mathematics and nature yet reminiscent of a huge metal shaving discarded from some massive industrial process*

Caspar Taylor, who was born in London in 1969 and graduated in fine art in 1991, will open the Visual Arts Exhibition of the 47th Wooburn Festival.

A selection of his work will be on display in the exhibition (for times see [www.wooburn.com](http://www.wooburn.com))

The artist is well known for his traditional sculpture and restoration and has worked around the world on many historical sculpture and architectural projects in stone, timber and ornamental plaster for which he has received many awards. In the UK, this work has included Edinburgh Castle, Windsor Castle, Uppark House and numerous other projects for the National Trust, English Heritage and private residences.

His timber work includes the carving of a large figurehead for an old steam yacht.

Caspar is equally renowned for his contemporary sculpture and he has exhibited consistently since 1991. His work is in private collections around the world.

Caspar's latest work combines his experience of traditional materials and his understanding of space and form with a contemporary spirit. While his work is pure and precise in form it is often inspired by such 'happy accidents' as a piece of clay squeezed between the fingers or a discarded timber or metal shaving.

Wooburn Festival Visual Arts Exhibition  
Open to the public Saturday October 6  
to Saturday October 12  
at St Paul's Church Hall. Admission Free



# Aztec heating and plumbing

Repairs to all Gas Boilers & Servicing Contracts

Also General Plumbing Repairs

Central Heating, Pumps, Valves, Timers & Programmers

Tel: (01494) 440219 home

Tel: 07973 439781 mobile

Tel: 07831 563477 mobile

## Samson Windows

*We're Successful Because We're Different*

- Top Quality Installations
- High Security
- PVCu & Aluminium
- Windows, Doors & Conservatories



NO Pressure Selling

NO Discounts for Quick Decisions

- we want you to be sure

NO Show House Special Offers

- we'll do a superb job anyway

NO '6 windows for £1500' - plus another 50% for essential extras - in fact -

NO nonsense at all - just excellent quality, workmanship & value guaranteed to secure your recommendation.

NOTHING free - except information & advice



*The Beauty of the Past  
The Efficiency of the Present  
PVC Sliding Sash Windows  
Virtually Indistinguishable  
from Traditional Timber*

**FREEPHONE 0800 146165 or 01628 524469**

# AS GOOD AS NEW

Mobile Bodywork Repairs

## DAMAGED YOUR CAR?

Scuffs, Scratches & Dents

**Call Malcolm now for a free quotation!**

**Office: 01628 532586 Mobile: 07786 482262**

**Turn to page 39 for our calendar of local events**



Well, what a can of worms I opened! In the last issue of *Target* I wrote about my concerns that there were now too many red kites in this area. It was my personal opinion as I often have as many as ten circling over my home (because someone nearby is clearly feeding them) and I was surprised the RSPB were not interested in monitoring any reports of red kites swooping down to kill live birds (this after one had carried off a wood pigeon in my garden). Pigeons, I was told, are dispensable. And it seems most of you agree.

Personally I think that's a strange attitude to have.

I've had several letters sent in (which is always a treat, even if they were mainly criticising me). I am printing most of them. But not the one that was a personal attack on me. You know who you are.

I also had a phone call from someone who chose not to put pen to paper. He was a local grouse/pheasant shooter who seemed to have a personal vendetta against pigeons. He started the conversation doubting I'd seen what I claim to have seen (red kites ONLY eat carrion, he assured me) but halfway through the conversation admitted he'd seen them carrying off live rabbits. I guess they are dispensable too?

In summary can I reiterate I know red kites look majestic; I know they are supposed to eat only carrion. I never suggested a culling. I wouldn't harm a feather or hair on any bird or animal, I just wanted your feedback.... And here it is

I have been birding in the county since before the red kites were introduced and followed the kites' gradual increase with interest. Many people where I work comment to me on the kites and almost always in a positive way. They appear to have raised people's awareness of birds and perhaps other wildlife.

I personally find it fascinating to see them flying around our skies almost effortlessly and occasionally congregating over and then swooping into an area where there is clearly food. So many people including myself like to see the kites around. I agree that there are a lot of kites around now but this is largely due to the amount of food available to

them. What with road kills, injured birds from shoots and of course food supplied from well-meaning people, there is no shortage. While small birds are very likely to get out of the way if a kite is low overhead, they do not generally hunt live prey and rely on carrion and small live creatures such as worms and beetles. They can take small items of live prey but they are not agile enough, nor strong birds. Their talons are relatively small when compared to a bird like a buzzard, which is a similar size, but has larger stronger talons and can take much larger prey items such as rabbits.

So people in the area need not worry about their cat or dog being taken by a red kite any time soon. They are far more likely to be run over by a car. Perhaps you should believe what the RSPB tells you next time!

Jim Rose, Bucks Bird Club

I get a thrill at seeing our red kites - they are such majestic birds and I believe there has been a lot of nonsense talked about their being a menace or a threat to our wild life.

They are supposed to only go for carrion; maybe they will take small living creatures, certainly nothing of any size, for they would be incapable of lifting any substantial weight. They always swoop and take their food to be eaten elsewhere and are incapable of lifting anything of substantial weight (not like the buzzard, a similar bird, which devours its food on the spot.)

What a wonderful sight to see 20 or 30 birds circling high in the sky and I am fascinated by the way they call to one another! I don't believe they will become overpopulated because they will spread naturally to a wider area. Culling? Heaven forbid! I say let nature take its course.

Richard Hipkin  
Wooburn Manor Park, Wooburn Green

I am no anorak or twitcher, but must disagree with you concerning the magnificent red kite. They are a wonderful addition to birdlife here. I live on the edge of some woodland, regularly feed the birds (not the kites) and observe many species flourishing. Kites are scavengers, swooping to devour scraps and worms, but can eat smaller birds after chasing them. Our own species is far more damaging to nature.

With regard to other items in the last issue of *Target*, I agree with Penny Walsh (letters) about the under-appreciated Forum Players. I too was one of the few at Light Refreshments and was entertained and surprised at the level of competence. Staging it on the night of the Eurovision Song Contest was probably not a good idea if you want to attract mass audience!

Peter Osborne (Marina Life) is a witty columnist with whose views I often disagree, but I support him against the disgusting habit of hanging bags of dog's

droppings on fences. Not sure about the canine nappy by-law proposal! Perhaps he would care to elucidate over a pint in The Bounty with me? Perhaps Dave could give us both free pints?

Kevin Ahier  
Frank Lunnon Close, Bourne End

My husband and I were very surprised to read your views on red kites. These beautiful birds are very much admired and welcomed in this area by everyone we know and by visitors who come to stay.

They are actually classified as scavengers rather than predators and it may well be that the particular red kite you saw was only taking advantage of an already injured pigeon rather than attacking it in the first place.

With regard to wood pigeons, we have noticed that they seem to be doing rather well as we seem to get lots of them in our garden eating our vegetables! We do agree, however, that it is not a good idea to feed red kites, but they, like all wildlife, are part of the wonderful ecology in this country and have a part to play.

Eileen Paine  
West Ridge, Bourne End

Whilst not being twitchers, my wife and I take great pleasure in watching the graceful gliding of the red kites in and around the skies over our garden. On occasions, we too have also seen groups of them, which invariably include males and females with youngsters learning the ropes. We have never seen any aggression being shown towards other birds.

On the other hand, on several occasions we have seen groups of crows or rooks attacking a red kite and we have also seen pigeons attacking the smaller birds. To us pigeons are the bullies and the nuisances. And, what about the magpies?

Nature has a way of balancing things and we should leave things to her to handle in her own way.

George Parker  
Thames Close, Bourne End

I agree with your views on red kites. I think tampering with nature can lead to unexpected/undesirable outcomes and that is what is happening with the red kites.

I love *Target* magazine and clearly a large number of people read it cover to cover. This week three people have congratulated me on becoming a Little Marlow Parish Councillor (but I am writing this in a personal capacity) and more people have commented on how well Ollie Garnett is doing after his op having read about it in *Target*. I regularly recruit students for my maths tutoring through my advert too.

Kath Acres  
Spade Oak Farm, Bourne End

### And now for something completely different...

I felt I wanted to comment on the Council's New Waste Service.

Having a black bin and a green bin is enough. To accommodate a third blue wheelybin is too much, I suspect, for most small households.

As a single person, I make good use of and often fill the green bin. I only half-fill the black bin in a fortnight, (though I can see a family might fill it.)

However how can the Council imagine anyone anywhere near filling a blue bin in a fortnight? So I hope I can opt for a smaller blue container like the black box we use at present for plastic and tins. If not, we are in danger of being overwhelmed by bins!

Richard Hipkin  
Wooburn Manor Park, Wooburn Green

The Wye Valley Volunteers (WVV) very much appreciate the publicity in the last edition of *Target* on receiving the prestigious Queen's Award for Voluntary Services on the 60th anniversary of Her Majesty's coronation.

To complete the picture, the WVV would like to record that we are hugely indebted to Margaret Marshall and would like to thank her for making the initial nomination in September 2012.

Douglas Fergusson (Chairman)

## Englishman with van

A POLITE, RELIABLE & PROFESSIONAL SERVICE

- Man with van service
- Collections - multi/single item
- Removals - house/garage clearance/disposal
- Dismantle & assembly of goods
- Packaging & storage solutions
- Additional Porter available upon request

PRICES  
from  
**£30**

07941 413 111 or 01628 532 731

graham@englishmanwithvan.com

www.englishmanwithvan.com

# A touch of Pizazz

**Win a £50 or £25 voucher to spend at Pizazz, the newly refurbished sister shop to No25 Bourne End**

Valerie & Louise Way have added a touch of Pizazz to Bourne End. The newly refurbished premises at 27 The Parade, previously used as an extension to No 25, now has its own identity and a bright new look.

The new Pizazz shop, with its modern lime green & crystal décor accents, opened on September 6 selling ladies fashion separates and an exciting selection of accessories including handbags and jewellery.

There is also a selection of special occasion wear for weddings with competitive prices of around £150 to £399, plus cruise wear and Ascot outfits.

Next door, at No 25, they will continue to specialise in designer wedding and mother-of-the-bride outfits from £400 upwards. The shop has a growing reputation and these days it's advisable to make an appointment to make sure you have the time and necessary expert attention to select the perfect outfit.

Valerie says the clearer definition between the two shops will make it easier for clients and staff. The adjoining archway between the businesses will be closed in due course.

For your chance to win the first prize of a £50 voucher or one of two runners-up prizes of £25 vouchers, simply answer the following question: **On what date did Pizazz open?**

Send your answer and contact details by email to [enquiries@pizazzshop.co.uk](mailto:enquiries@pizazzshop.co.uk) with *Target Competition* in the subject line by the closing date of October 31. Or you can enter by post to Pizazz, 27 The Parade, Bourne End, Bucks SL8 5SB.



**REIKI TALK**  
 Holistic Energy Healing  
 All levels taught - Healing given  
 Telephone or text 07841 474398  
[www.reikitalk.org.uk](http://www.reikitalk.org.uk)

## ST NICHOLAS' CHURCH, HEDSOR

**THE HISTORY OF THE JOHN LEWIS PARTNERSHIP**



FROM 1864 to TODAY

**A TALK**  
 by  
**JUDY FARADAY**

The JLP Fabric Archivist and Museum Curator

The talk will cover the history of the Partnership and the establishment in Oxley, Cookham, of a unique archive of thousands of fabric samples dating from 1780

**St Dunstan's Church Hall  
 Bourne End  
 7.30pm Friday 15th NOV 2013  
 Tickets £10 [including nibbles and wine]  
 Ring Maura 01628 530181**



# CROWDEN

• COACHWORKS LTD •



**FOR ALL YOUR BODYWORK REQUIREMENTS**

FREE ESTIMATES  
 FREE COURTESY CARS AVAILABLE  
 ALL INSURANCE COMPANIES CATERED FOR  
 ALL BODYWORK UNDERTAKEN, LARGE OR SMALL  
 FRIENDLY, FAMILY-RUN COMPANY  
 SPECIALIST/SPORTS/CLASSIC CARS WELCOME  
 4 WHEEL ALIGNMENT AND JIG FACILITY  
 DISCOUNTS FOR LOCAL COMPANIES/FLEETS/NHS STAFF  
 LANDROVER AND TOYOTA SPECIALIST  
 ALL MAKES REPAIRED

**The Green, Wooburn Green, High Wycombe, HP10 0EE  
 Telephone & Fax: 01628 526463 Email: [Crowdencoachwork@aol.com](mailto:Crowdencoachwork@aol.com)**

*Support your local craftsmen and traders*

# Little Marlow Parish Council

By Gloria Barclay, parish clerk

## Little Marlow Fete

The wonderful sunny weather made the day and we were very pleased to welcome so many people to our Parish Council stand and to hear what you had to say. We hope you found the information on the stand useful and we always welcome your views and ideas.

## Little Marlow Recreation Ground

With the help of a donation from funds raised at last year's fete, we have now installed a new piece of play equipment at the recreation ground which is already proving very popular.

## Buckinghamshire Best Kept Village Competition

Little Marlow were voted runners up in the Tindall Cup for the Buckinghamshire Best Kept Village competition this year. The village received 89 out of 100 marks and the judges commented that "The village has a very well cared for appearance and it is clear that residents take pride in it and accept responsibility." A big thank you goes to all the residents of Little Marlow for keeping their village neat and tidy.

## Newsletter

The autumn edition of our Parish Council Newsletter will be going out to all residents in the parish at the beginning of October. If you do not receive one, but would like to, please contact the clerk (see below).

## Next Parish Council Meeting

The Parish Council meetings are held at The Pavilion, Recreation Ground, Little Marlow and start at 8pm. The next two meetings are on Tuesday October 22 and Tuesday December 3. You are very welcome to attend these meetings.

## Contact

Little Marlow Parish Council, Community Office, The Pavilion, Little Marlow, Bucks SL7 3RS. Tel: 01628 890301.

Email: [clerk@littlemarlowparishcouncil.org.uk](mailto:clerk@littlemarlowparishcouncil.org.uk)

[www.littlemarlowparishcouncil.org.uk](http://www.littlemarlowparishcouncil.org.uk)

The office is open on Tuesdays, Wednesdays and Fridays from 9am to midday.

# Little Marlow village fete

Lots of people must have been keeping their fingers crossed for good weather for the Little Marlow fete as we were blessed with the most wonderful sunshine on Bank Holiday Monday. As a result, we had a fantastic turn out and took in a record £6,600. Thank you to the stallholders and other helpers as well as to everyone who contributed in any way to the success of the fete, including all those who came along to support it.



As in previous years, there were lots of activities for children. They all seemed to enjoy the races. There were some difficult calls to make on who crossed the finishing line first, but all accepted that the judge's decision was final. Budding footballers had the chance to show off their skills at the fastest shot run by the BESJC. There were also activities for those who wanted to do something less athletic. We were delighted to welcome the Little Marlow School back after a few years' absence. They ran a craft making stall while Dinky Doodles came along once again to do face painting.

The dog show was extremely popular. There were many more entrants than last year and a large crowd came to watch the judging. There was also a lot of interest in the display of classic cars and in the Royal Coach Collection. The tombola was busy all afternoon. We are most grateful to all who kindly donated such fantastic prizes.

We had a good number of entries, including from children, to the fete's first home baking competition. Judges Bernard Burger and Lynne Walker from Burgers of Marlow found it very hard to pick the winners.

The tea pavilion was even busier than usual with Bass-ically Saxes, a local saxophone quartet, providing the live music.

All the proceeds from the fete will go towards local good causes, projects and activities which benefit the residents of Little Marlow. Any suggestions on how to spend the money would be most welcome.

Next year's fete will again be held on Bank Holiday Monday which in 2014 falls on August 25. So please put the date in your diary now!

*Valerie Brownridge Chairman, Little Marlow Village Amenities Committee*



## BOURNE END MOTOR COMPANY

Bourne End Motor Company was established in 1994 and in that time we have built a reputation for offering the personal and professional approach normally only found in the more prestigious franchised dealerships.

We have been recognised as one of the leading Marshall and Ford specialists in the South East, specialising in cars of between six months and four years old.

We have also built up a huge range of suppliers and can source many other makes and models which offer similar value for money. With a very active purchasing department, if we do not have your specific vehicle in stock, we are confident that we can source it for you. We know we can be very competitive by running a smaller, more efficient business whilst still matching the standards of the Main Dealers.

- Local Family Business
- All Cars HPI Checked with Service History
- Computerised Stock Locator
- Ford and Vauxhall Specialist
- Other Makes Available

TEL: 01628 533 222

[WWW.BEMC.CO.UK](http://WWW.BEMC.CO.UK)

WAKEMAN ROAD • BOURNE END • BUCKINGHAMSHIRE • SL8 5SX • TEL: 01628 533 222 • FAX: 01628 530 264



## You mean you don't complain about English weather?

Not at all, it's preferable to Hong Kong's. The family love snow, and we all enjoy the changing seasons. Hasn't this summer been great? – just like the summer we arrived in 2003.

## How do you relax?

I enjoy photography, and capturing the changing scene around the seasons. The river is wonderful for photography, and I like taking pictures in the snow. As a family, we enjoy walking by the river, and if I have a few days off we might drive up to the Lake District or to the coast. Occasionally we go to London, especially to China Town at Chinese New Year. Justin helps coach younger children at the tennis club at Wooburn Green, and Marco plays tennis there too.

## The economic downturn has affected many restaurants. How about Kong's?

Well yes, of course, it's a difficult time for everyone. We are keeping our prices low to enable people to still enjoy Chinese cuisine.

Kongs is as well known for its community spirit as it is for its delicious Chinese food. Ever year they pack the restaurant and offer a free lunch for local elderly residents. As Barry Kwok marks a decade living in Bourne End and running Kong's Restaurant, we find out what brought him here and what the family enjoy about community life...

## This is your tenth anniversary year, Barry.

Yes, we arrived in Bourne End back in 2003 when an old childhood friend of mine, S W Tang, invited me to come and run Kong's Restaurant which he had just taken over. He already had two successful restaurants nearby.

## What made you agree to come?

Apart from the business opportunity, my wife Annie and I were particularly attracted to British education for our two boys. Justin was then eight and Marco just one.

## What was it about schools here that appealed?

In Hong Kong there is such pressure put on very young children, with constant tests and homework. They don't have a childhood. We like the British way of teaching in a less pressured way.

## Was it hard to settle in, and was there a language issue?

People have been very friendly and welcoming. As for English, I used English in Hong Kong for work documents, but of course that's quite different from conversation, so I had a lot to learn. The children picked it up extremely fast. The teachers at Carrington School where Justin started school and at Marco's nursery were very kind and helpful.

## The contrast between Hong Kong and Bourne End must be marked

It certainly is. When we go back to visit – Annie's parents and my mum still live there – we are very struck by the noise and hectic pace of life. Bourne End is very peaceful in comparison. Also the weather – the humidity in China is so high and uncomfortable.

## Were you a chef or restaurateur back in Hong Kong?

No, I was an engineer. Running a restaurant was new to me, but of course my partner was very experienced so I quickly learnt from him and we brought in excellent Chinese chefs.

## What is the most popular dish at Kong's?

Probably crispy aromatic duck. We shred the meat at the table and families enjoy rolling their own pancakes. Also barbecue spare ribs.

## And your boys – do they enjoy Chinese food?

They do, though Justin loves cooking Italian food too.

## You're clearly a proud family man

I am, yes. Justin hopes to go to university to study chemistry next year, and Marco has just started at John Hampden Grammar School. We are very happy that they love living and studying here. We've bought a house two minutes from the restaurant and feel very settled.

## Kong's has a long tradition of contributing to the annual Christmas shopping night

We continue that by sponsoring the Christmas lights along with other Bourne End businesses.

## Why did you begin offering an annual free lunch for elderly people?

For the last four or five years we've provided a meal for 70 to 80 elderly residents of Bourne End around Chinese New Year. It's our way of thanking the community, and as Chinese people it's our tradition to look after older people. We have a collection box on the side so that those who wish to can contribute to a local charity – this year it was the Day Centre, so the community is helped in that way too.

## Chinese New Year is clearly an event you didn't leave behind

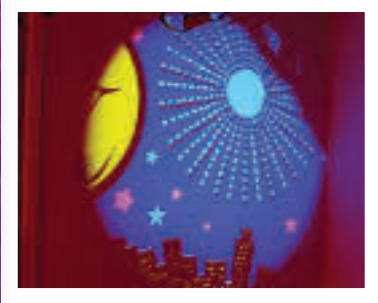
Yes – we have a special Chinese New Year dinner each year at Kong's when diners can enjoy watching lion dancing performed in the restaurant. It may not be quite as exciting as in China Town but lots of our customers really enjoy that evening.

# Quiet space at Claytons School

Peace, light, sound and space came together as an end-of-term delight at Claytons School. A new sensory room was finished in time to be enjoyed before the summer holidays. It was all thanks to Wooden Spoon, a children's charity dedicated to providing happier and richer lives for young people with special needs.

Converted from a small changing room, the new facility has light and sound projectors, bubble tubes, soft play cushions, colour wheels, mirrors, keyboard and activity panels. It's a chill-out room for emotional situations as well as an inspirational space for special needs.

Rugby star Tom Guest, from London Harlequins and England Saxons, was the special guest who officially opened the new sensory room. Afterwards he talked to the youngsters and staff members about being part of a team. Wooden Spoon people talked about their local projects which totalled £150k and TNT, who sponsor Claytons, chilled out in the sensory room they had helped to create.






BY APPOINTMENT TO  
HER MAJESTY THE QUEEN  
HER ROYAL HIGHNESS THE DUCHESS OF YORK  
HER ROYAL HIGHNESS THE DUCHESS OF BRUNSWICK

## RS Boiler Services

**Gas • Oil • Heating**  
**Plumbing • Electrical**  
**L.P.G. Specialists • Propane • Butane**

TEL: MARLOW (01628) 483099 FAX: (01628) 476843

Paper Dolls - Chiari - Casamia - Gina Baccanti - Courgette - Arie  
 Libra - Marble - Michaels Louisa - Zella Essentials



## Pizazz

### Exciting New Shop Opens!

Flamboyance, Flair, Glamour - they're all here at Pizazz!

All the sought after labels, plus accessories by Dents, Gaby's, Riva & Jewel City...

Opening Offers in store!

27 The Parade, Bourne End, Bucks. SL8 5SB  
Tel: 01494 522530 email: enquiries@pizazzshop.co.uk  
web: www.pizazzonline.co.uk

# Donna Preston

In 2012 Donna Preston celebrated her 80th birthday at the community centre. She was in her element surrounded by family, friends and neighbours. The theme for the birthday celebration was Italy and there were views of the country taken by Donna over the many visits she made. She loved the country, the warmth, the glorious countryside, ancient towns and fabulous art.

Sadly the year that followed this celebration was one of illness and pain. Through those months Donna never lost sight of the person she was. She took a pride in her appearance, kept her interest in daily life, smiled and laughed with visitors and, right up to her last days, she loved to potter in the garden, deadhead her roses and delight in the flowers that followed such a long, cold, winter.



Donna grew up in Hampstead and was evacuated to Stokenchurch at the outbreak of the Second World War. She went to art school, which inspired her hobbies later in life, but eventually she went into nursing. Her courtship days were spent on the back of a motorcycle before marriage in 1955. Seven years later she and husband Laurie moved to Bourne End and Donna's days were spent raising Julian and Deborah, providing a comfortable home and creating her garden.

But this clever, artistic, imaginative and amazing lady still had more to give. When other people might have been thinking about a quiet life Donna went back to get teaching qualifications. She always believed that you should make the most of your life – and that's what she did. For the next 25 years she took pride in teaching at Carrington School in Flackwell Heath.

Alongside her home life and her teaching life Donna became a member of the local branch of the Red Cross with its headquarters in New Road. She was responsible for the Red Cross Cadets, seeing them through their training in a wide range of useful skills including first aid, local emergency help and knitting blankets. Donna loved being part of all the Red Cross activities, especially their annual fund raising bazaar when she could show off her artistic skills.

And those skills at creating hand painted silk scarves will be a lasting memory of that special occasion when Wendy Craig opened the Access Project at the community centre in 1998. Donna had agreed to donate one of her scarves as a 'thank you' and as it fluttered free of its tissue wrapping it matched Wendy's turquoise suit perfectly. "Oh, how beautiful" Wendy said to a smiling Donna. That smiling lady, who died on July 16, will be missed for all her special skills. RIP



## PT CARPENTRY

and Household Services

Design • Repair • Rebuild - just ask

### Paul Thomas

Mobile : 07905 221991 E mail : [ptcarpentry@live.co.uk](mailto:ptcarpentry@live.co.uk)

Carpentry - Plumbing - Plastering - Decorating - Gardening  
(sub contract electrical services)

Carpentry design and repairs, bespoke furniture made to order, erecting sheds, stables, fencing, trellis, garden gates, assembling flat pack furniture, hanging doors, changing locks & door furniture, fitting security locks to doors and windows, boarding out lofts & installing loft ladders, plumbing in sinks, installing washing machines, kitchen and bathroom fitting, changing taps, tiling, grouting, putting up shelves, pictures, mirrors & curtain poles, clearing and repairing gutters, landscaping, general garden tidying, pressure washing patios, project management.....

the list goes on and on!.....

*"To do the jobs that you don't have time to do !"*

Mobile : 07905 221991 E mail : [ptcarpentry@live.co.uk](mailto:ptcarpentry@live.co.uk)

## atlas carpet cleaning



Free quotation  
Fully Insured  
Stain & odour removal  
Fast drying  
Clean, fresh carpets for your family  
Domestic & Commercial

01628 533329 | 07787 838361

[paul@wiseman4.wanadoo.co.uk](mailto:paul@wiseman4.wanadoo.co.uk)

## Solicitors Buchanan's

Conveyancing | Commercial | Employment |  
Wills | Probate | Litigation | Elderly Client

Buchanans Solicitors can assist with all the above and more.

Buchanans Solicitors is a friendly, modern law firm which offers a broad range of services and aims to deliver clear advice promptly and cost effectively.

Call us for a free, no obligations chat on 01628 810 707

Swains House, Swains Lane, Flackwell Heath, Buckinghamshire HP10 9BN  
[office@buchanansonline.com](mailto:office@buchanansonline.com) [www.buchanansonline.com](http://www.buchanansonline.com)

Authorised and regulated by the Solicitors Regulation Authority (SRA)

**You can't have everything - where would you put it?**

# Support where it is needed

Anyone coping with the problems caused by head injuries knows how important it is to have the support of a carer. That's why Headway South Bucks have set up a Carers Support Programme for these very special people. It was launched at a coffee morning in the community centre on a gloriously sunny day and enabled everyone to get information about the future plans to support carers and encouraged them to share experiences. See a selection of our photos on the right.

Jane Clarke, chairman of Headway South Bucks, acknowledges the huge contribution made by carers. "Headway's activities at the community centre are a lifeline for the person with the head injury but we know that day-to-day their carer is the one who provides quality in their lives." Jane is delighted that the proposed Networking and Support sessions will assist these wonderful people.

On Thursday October 24 at 1.30pm there's a talk on The Essential Role of Carers in the *Target Room* at the community centre. Then in December another talk will highlight Relationships and Contact looking at the subject from the carer's viewpoint. In addition they plan an outing for everyone to see *The Lion King* in London with a meal in October. Their Christmas outing will be to Waddesdon Manor, including coach travel and lunch.

As part of the support programme Headway can also provide information about benefits and explain changes to the system which would make a difference for their clients. There are also resources available for carers and those they look after. Headway South Bucks have established themselves as a major caring agency and delight in making the lives of those referred to their centre in Bourne End a very special one.



## bourne end dental

Our exceptional levels of expertise and our team approach to caring means Bourne End Dental has been at the forefront of general practice for more than 20 years.

- ❖ Considerate dentistry in a caring environment
- ❖ Superb clinicians with a family focus
- ❖ Early morning & Saturday appointments
- ❖ Specialists in gum therapy, root canal treatment & braces
- ❖ Cosmetic dentistry & whitening
- ❖ Dental implants & facial aesthetics

Protecting, renewing and enhancing the lifelong dental care of our patients

**01628 523 353**

Station Road, Bourne End, Bucks, SL8 5QF

[www.bourneenddental.co.uk](http://www.bourneenddental.co.uk)



**Brittons Solicitors**  
28 The Parade  
Bourne End  
Bucks SL8 5SY

Friendly, helpful, professional, efficient and cost effective legal service.

**We look after you.**

Telephone: 01628 533350  
Fax: 01628 533119  
Email: [lex@brittonscl.co.uk](mailto:lex@brittonscl.co.uk)

Kumon's **maths and English** study programmes work to unlock your child's potential, building their confidence and independent study skills.

To unlock your child's potential, contact your local instructor for a Free Assessment.

**Flackwell Heath Study Centre**  
Karen Saunders **01628 532620**

**KUMON**

**Free Assessment**

[kumon.co.uk](http://kumon.co.uk)



## V J CLEANING

**ALL HOUSES & BUSINESS PREMISES CLEANED TO THE HIGHEST STANDARD**

REGULAR WEEKLY CLEANS OR ONE-OFF DEEP CLEANS. WE CAN WORK HOURS TO SUIT YOU, HOWEVER BIG OR SMALL.

FOR A FREE, NO OBLIGATION, QUOTATION

**CALL US NOW ON 07869 127508 OR 01628 527891**



## Dadd walk for charity...

Wooburn resident Chris Dadd is playing his part in trying to crack poverty in Africa with a sponsored expedition up the highest mountain outside the Himalayas, the almost 7,000 metres high Aconcagua in Argentina. The three week climb takes place in January and he's hoping to raise more than £22,000.

Chris is raising the money for the charity Giving Africa and hikes through the Chilterns every week in training, often with his two-year-old son Sebastian on his back to prepare him for carrying a heavy rucksack of provisions and camping gear. This photo was taken by Isabelle, one of the Chiltern Explorers a social walking group who have helped him train and have given to the fund.

You can donate at <https://www.justgiving.com/6962>  
Or Text "DADD74 £5 to 70070" to give £5 to Giving Africa.

## Uncertain future for Exercise Clinic

After years of providing professional exercise facilities from within Wye Valley School the community gym was devastated to receive a notice-to-quit the school premises at the end of the summer term. Three months notice meant that they had to be out by the end of October.

So far Jason, who owns the clinic, has not been able to negotiate either an extension or a change of heart by the school's management. "So many people expressed their horror at what had been done to us" he said "but letters, emails and an e-petition seem to have failed". Jason admits that he doesn't know which way to turn.

"People who use the clinic are our friends" he says. "Many have been referred to us by the local surgery and we know that the loss of exercise facilities will affect their health." Julie from Willows Road doesn't drive so for her the Exercise Clinic is just a walk away. "Where will I go now?" she asks. "Exercise is so important and now our local school is taking away this facility. And we know that the students were great supporters as well."

In the midst of all this the Exercise Clinic has been shortlisted for two major awards – to add to the ones they received last year. Coach Wendy Chaplin explains that they don't have to prove their worth. "We just need to stay open and that's the big challenge now."

## DAISY GIFT SHOP

Beautiful gifts for all occasions



Flackwell Heath

01628 522517

[www.daisygiftshop.co.uk](http://www.daisygiftshop.co.uk)


Monday to Saturday

9.00am – 5.30pm

Sunday 11am - 3pm


Now on Facebook





**DO YOU KNOW THIS MAN?**

**This is the face of Tony Elder**



**TONY ELDER**  
BOURNE END GARAGE  
01628 533 236

Tony Elder has been synonymous with car care in Bourne End for over 40 years and he has taken over Bourne End Garage, where, he says "No job is too much trouble".

Call in for a chat and speak directly to the person who will be undertaking the work.

**BOURNE END GARAGE**  
1 OAKFIELD ROAD, BOURNE END  
**TEL: 01628 533 236**

SERVICING • EXHAUSTS • TYRES • WELDING • MOT'S ARRANGED  
LOCAL COLLECTION BY ARRANGEMENT

### HANDY MAN

Carpentry, guttering, roof repairs and general maintenance

**Tel 07949 911 100**

Adam Rowe, Bridgestone Dr. BEnd



### TRYING TO JUGGLE YOUR CHILDCARE?

**Cookham Montessori School**  
For children aged 2-5 years

We are extending our hours to offer a flexible package for busy mums!

Mix & match your daily requirements:

- Session start times: choose from 8.30am, 9.00am, 9.30am or 12.30pm
- Session finish times: choose from 12.30pm, 1.30pm, or 3.00pm

Funding available for 3 & 4 year olds

Term Time Only

Ofsted Validated

**Phone 01628 529414**

[www.cookhammontessori.com](http://www.cookhammontessori.com)



## Happy residents at The Hawthornes... come rain or shine!

The heavens opened and the summer garden party planned at The Hawthornes sheltered housing accommodation in Wooburn was moved indoors. But the torrential rain couldn't wipe the smiles off the residents' faces.

A great time was had by all as the barbecue feast, tombola and live entertainment was all moved to the communal lounge. It was a bit of a squeeze, but that just made it all the more fun.

Here Sheltered Scheme Manager at The Hawthornes, Alison Crews-Orchard (pictured right), tells us about the scheme and why sheltered housing is a great option for the elderly...

"There are 25 flats here which are part of the Guinness Trust. I am on site daily from 9-2 Monday to Friday to assist residents in remaining independent for as long as possible.

When I asked some residents what they like about living here the first thing they said was the security. They don't have to worry about maintenance charges or keeping up the garden, although quite a few do look after parts of the garden. They also like the fact they never feel lonely as can easily meet up with someone in the communal lounge for a coffee if they want to and trips and activities like the garden party are regularly organised. Their next trip is to Brighton. It is a personal choice if you want to get involved or prefer to opt out.

To qualify for sheltered housing you must be over 55 and, depending on your circumstances, you will be awarded points. You can apply directly to Guinness and can either get a form from me or contact Guinness on 03000111321. When a flat becomes available, if you have the most points, you will be invited to view the flat.

At this point a financial assessment will be completed and if you meet the criteria you will be offered the flat. Each flat has its own full size kitchen, bathroom, lounge and bedroom and you pay a weekly rent, service charge and your own bills.

At present I have two residents in their 90s quite a few in their 80s and 70s and a couple of people in their 60s and 50's. Please do not hesitate to contact me on 01628 522992 if you would like to visit or find out more."



One of the garden party organisers, Rene Freeman (a resident for 19 years) with fellow resident and chef for the day Don Rackstraw

*Margaret Murphy (right) was one of the first residents to move into The Hawthornes when it opened 19 years ago. Target visited her in her first floor apartment where she has stunning views of the Wooburn fields and an impressive array of family photos on show.*

*Sparkly-eyed Margaret celebrated her 90th birthday in July and messages of congratulations arrived from around the world as the petite lady is mum to four daughters, five sons and grandmother to "so many grandchildren I've lost count" and "they live all over the place" including Spain and Canada. Happily some live a more accessible distance away. Margaret loves living at The Hawthornes. She particularly enjoys the independence she has in her own flat but the feeling that help is always close at hand should she need it.*

*A keen gardener who still lends a helping hand with the gardening at the flats, Margaret used to help out at the baby clinic in Wooburn, was a keen member of the Bourne End Townswomen's Guild and has helped out with hospice fundraising over the years. We'd like to thank Margaret for regularly delivering Target to her neighbours!*



### Quality Dry Cleaning and laundry service in Bourne End

Open six days a week from 8.00am  
2 hour express cleaning on request  
Professional and friendly service  
All cleaning done on site  
Competitive prices

BLUE DRAGON  
Quality  
LAUNDRY & DRY CLEANING

62 The Parade  
Bourne End  
**01628 522358**

**OTHER BRANCHES:**  
Beaconsfield  
Gerrards Cross  
Great Missenden  
Hillingdon  
Ickenham  
Mill Hill

Suits  
Mens/Ladieswear  
Suede & Leather  
Wedding Dresses  
Evening Wear  
Shirts  
Laundry  
Duvets  
Curtains  
Household  
Soft Furnishings  
Repairs  
Alterations  
Carpet & Rugs  
and more...

## CHRIS GATES

### Decoration & Repair Services

- \*Top quality interior and exterior decorating
- \* Interior carpentry, plastering, coving and tiling
- \*Repair and restoration of exterior woodwork
- \*Box sash window repair and refurbishment
- \*All types of glazing repairs
- \*Fully insured with references available on request

**For advice and a free estimate**  
**Tel: 01628 529698**  
**Mob: 07802 457274**  
**Bourne End**



# SCAN Sports Club Activities and News

## ABOUT BOURNE END JUNIOR SPORTS CLUB

Founded in 1970 Bourne End Junior Sports Club is a registered charity run by volunteers, many of them highly qualified in their own sport. The New Road Sports Hall was built in 1982 and later extended to include a climbing wall and a club room. The multi-sport centre is used extensively by club members and members of the whole community. Visit [www.bejsc.co.uk](http://www.bejsc.co.uk) for more information.

### Club News

This summer we have been working hard to put together a brand new event for kids and adults fresh for the new term - S'port Local! On Saturday September 28 BEJSC will be hosting a range of sports activities for young people from 10.30am to 12.30pm.

Most of our sections take children from six years old but younger children are welcome to participate on this Saturday with their parents. There is no entry fee but some activities may require a small charge for participation due to cost of equipment.

Whilst I know most of you won't read this in time to participate on the 28th please watch our website for future dates, there will be more opportunities.

### Volunteering - who gains?

We, as a club are always on the lookout for new volunteers and new sections, so if you would like to put something back into the local community whether it be short or long term why not pop in and see what we do and how you can support us.

Yes of course it can be onerous, daunting, a bit of a drag at times – BUT you also do gain a huge value personally from giving up a bit of time to help others, and that more than compensates for the downside.

Our club would not exist without volunteers who over the years have contributed millions of hours of dedicated effort to help children and young people in the area enjoy participating in sport and recreation. Recent activity on the Bourne End & Wooburn Facebook pages has brought back many happy memories relating to club activities.

Please give volunteering some thought; you can gain skills in sports, ICT, networking, and much more – and most importantly have fun with like-minded people. It can also improve confidence and give a sense of satisfaction. The greatest reward is when young people say "thank you" for enriching their lives.

Why not join our online community on Facebook or Twitter where we'll be posting information on any upcoming activities.

### Cine Film of BEJSC in 1970

The DVD has proved popular with many previously involved in the club at the start, so if you missed the last details the offer is still open. Bourne End Cine Club was busy making a film of the early days when BEJSC first started.

We have just had it converted to a DVD with excellent results. It features the early sections – swimming, football, gymnastics, table tennis (with chess alongside), and country

and Scottish dancing. The Carnival procession and event in Jacksons Field is also featured. Leaders were gathered in meetings clearly planning the future of the club; none could have guessed the club would be as successful and thriving as it is today!

This is a real look back at days gone by! If you would like a copy of the DVD please email [liz@bejsc.co.uk](mailto:liz@bejsc.co.uk) giving details for posting/delivering or leave a clear contact message on our answer machine at the hall. They will cost £5 each.

### What BEJSC has to offer?

The children and young people living within the area are fortunate to have BEJSC enabling them to try various sports. Remember we offer Badminton, Basketball, Canoeing, Climbing, Football, Judo, Inline Hockey and Swimming. If you fancy trying any of these sports then call us at the hall (24 hour answerphone 01628 528110) or e-mail [office@bejsc.co.uk](mailto:office@bejsc.co.uk) and we will get back to you.



### Climbing Parties

Did you know you can book a Climbing Party at the BEJSC Sports Hall? We cater for ages 6 and over; participants need no experience as they will be guided by our instructors. Please phone for details on 01628 528110 or e-mail [office@bejsc.co.uk](mailto:office@bejsc.co.uk)

Visit our website – [www.bejsc.co.uk](http://www.bejsc.co.uk) for more information.

### What else is available at the BEJSC Sports Hall?

For information on the adult clubs who use our premises please contact the Sports Hall – there is badminton, basketball, football and wheelchair basketball.

Pilates Class – don't forget this class is on Thursday evenings from 6.30 – 7.30pm. This gentle form of exercise is suitable for all ages. Please contact us for more details.

Treatment Room – for all your aches, pains, and sports injuries contact Jason on 01628 528226



**For information on clubs using our premises please contact the sports hall [www.bejsc.co.uk](http://www.bejsc.co.uk)  
email: [office@bejsc.co.uk](mailto:office@bejsc.co.uk). Chairman & Editor: Liz Hutton 01628 478168  
Manager: Pete Sherwood 01628 528110 mobile 07710 132424  
Sports Hall: (answerphone) 528110**

**Need an Electrician?**



N.I.C.E.I.C. Approved  
Portable Appliance Testing  
All electrical installations and  
rewiring undertaken.



**SELLECK  
ELECTRIC**

**ELECTRICAL CONTRACTORS  
AND TESTING SPECIALISTS**

S.D. & R.A. Selleck  
Electrical Installations Ltd.  
3 The Green, Wooburn Green, High Wycombe,  
Buckinghamshire, HP10 0EE

**Tel: 01628 525278**

**Fax: 01628 810373**

**www.sellecks.co.uk**

**Wooburn Wheels**

Service & Repairs, Children's Bikes, Adult Cycles,  
Good Selection of Accessories.

**Tools, Appliances & Accessories**

**COMPETITIVELY PRICED:** Kettles, Irons,  
Toasters, Hair Dryers, Coffee-Makers, Shavers,  
Fryers, Lamps, Cable by the metre, Hoover Bags,  
Plugs, Lampholders etc.



**TARGET READER SERVICE**

**Useful Telephone Numbers**

**BOURNE END COMMUNITY CENTRE** 01628 522604

www.bourneendbucks.com

**POLICE** 101 **EMERGENCY** 999

**CRIMESTOPPERS** 0800 555 111

www.thamesvalley.police.uk

**POST OFFICES** www.postoffice.co.uk

Last collection time:

Bourne End, Furlong Road 5.15pm 01628 520050

Flackwell Heath 4.45pm 01628 520524

Wooburn Green 5.00pm 01628 522939

**DOCTORS' SURGERIES**

Hawthornden Surgery, Wharf Lane, Bourne End SL8 5RX

Dr S H Buxton, Dr M Wolfen, Dr T Hussain, Dr P Newman

Branch Surgery - 47 Straight Bit, Flackwell Heath,

Bucks HP10 9NE

**MESSAGES, VISITS & APPOINTMENTS** 01628 522864

www.hawthorndensurgery.co.uk

**HEALTH VISITORS' SERVICE** 01628 482788

Cherrymead Surgery, Drs King, Fraser, Elias, Hettiarachchi and

Payne

Queensmead Road, Loudwater, High Wycombe HP10 9XA

**MESSAGES, VISITS & APPOINTMENTS** 01494 445150

www.cherrymeadsurgery.co.uk

Pound House Surgery, 8 The Green, Wooburn Green HP10

Dr Elizabeth Bailey, Dr Raj Thakkar, Dr Shareen Hallas,

Dr Emma Southworth, Dr Mia Murray, Dr Sally Williams

Also at: Orchard Surgery, Station Road, Bourne End SL8 5QE

**MESSAGES, VISITS & APPOINTMENTS** 01628 530 997

www.poundhousepractice.co.uk

**NHS** 111 or www.nhsdirect.nhs.uk

**HOSPITALS**

Amersham Hospital, Whielden Street, Amersham,

Bucks HP7 0JD

01494 434411

Wycombe Hospital, Queen Alexandra Road, High Wycombe,

Bucks HP11 2TT

01494 526161

Stoke Mandeville Hospital, Mandeville Road, Aylesbury, Bucks

HP21 8AL www.buckshealthcare.nhs.uk

01296 315000

St Mark's Hospital, 112 St Mark's Road,

Maidenhead SL6 6DU

01628 632012

Wexham Park Hospital, Wexham Street, Slough SL2 4HL

www.heatherwoodandwexham.nhs.uk

01753 633000

**BOURNE END DENTAL PRACTICE**

Station Road, Bourne End, SL8 5QF

01628 523353

Mr G Goodall, Mr S Rees, Mr A Chandrapal, Mr A Powell

Mon-Thurs 8am - 5pm. Fri 8am - 4pm. Sat 9am - 2pm

www.bourneenddental.co.uk

**ASH TREE HOUSE DENTAL SURGERY**

6 The Green, Wooburn Green HP10 0EE

01628 532932

**Peter Moys**  
**Local handyman**  
**01628 529714**

No job too large or too small  
Reasonable rates agreed prior to the work  
[peter.moys@yahoo.co.uk](mailto:peter.moys@yahoo.co.uk)

**Mobile: 07502 305 894**

No VAT charges on labour  
Fully insured | Free estimates

**POUND HOUSE SURGERY**  
**Notice for patients**

Our patients complained about the  
cost of the old 0844 telephone number

Now we have reverted back  
to a local telephone number

We hope our patients will  
be pleased

**NEW TELEPHONE NUMBER**  
**01628 530997**

**John M Wilks**  
**Heating and Plumbing**

EST 1971

Specialising in power flushing and  
cleaning of all types of domestic  
heating systems

**Tel: 01628 527020**

**Mob: 07802 946209**



[www.buckspowerflush.co.uk](http://www.buckspowerflush.co.uk)

[info@buckspowerflush.co.uk](mailto:info@buckspowerflush.co.uk)



**ZUMBA**  
FITNESS

Instructor: Carol

Zumba phone:

07561329297

Suitable for all fitness levels,  
7.15- 8.15pm Tuesday evenings  
School Gym, Wye Valley School, SL8 5BW

No need to pre-book, or wait for a new term, just  
show up ready to wiggle!  
Parking is on the netball courts at the back of the  
school. Class £5 pay as you go  
Wear comfy clothes & gym shoes; bring a drink and  
a GSOH! :-)

**Community Minibus for Hire**

\*2 Comfortable Seats \* Reasonable Rates  
Needs own Driver

Contact Simon or Sue at the  
Community Centre

**01628 522604**

**PIANO  
LESSONS**



Offered by experienced teacher  
in a Bourne End home setting

Children and adults welcome

**ROBIN SHELDON**

**phone - 01628 530174**

**www.piano-lessons-rtts.co.uk**

**BROOKHOUSE VETERINARY SURGERY**

61 - 63 The Parade, Bourne End SL8 5SB

[www.brookhousevet.co.uk](http://www.brookhousevet.co.uk)

01628 525274

**DAY CENTRE**, Wakeman Road, Bourne End SL8 5SX

01628 527024

**WYE VALLEY VOLUNTEERS**, Portacabin, Wakeman Road

Bourne End SL8 5SX

01628 521027

**BOURNE END LIBRARY**

Wakeman Road, Bourne End SL8 5SX

0845 2303232

Sunday &amp; Monday closed. Open from 9.30am, half day on

Wednesday. Open Saturday until 2pm. Late Night on Tuesday

[www.buckscc.gov.uk/bcc/libraries/branches/bourne\\_end.page](http://www.buckscc.gov.uk/bcc/libraries/branches/bourne_end.page)**British Rail** Passenger Information

08457 484950

Bourne End Station, Station Road, Bourne End SL8 5QH

[www.nationalrail.co.uk](http://www.nationalrail.co.uk)**Carousel Buses** [www.carouselbuses.com](http://www.carouselbuses.com)

01494 533436

**Arriva Bus Company** [www.arrivabus.co.uk](http://www.arrivabus.co.uk)

0844 8004411

**North Thames Gas** Emergency (Slough)

0800 111999

**Southern Electricity** Emergencies

08457 708090

**Thames Water** Supply Emergencies

0800 714614

**THE SAMARITANS**

08457 909090

THE SAMARITANS Katharine House, 17 Uxbridge Road,

Slough, Berks SL1 1SN

**CITIZENS ADVICE BUREAU**

01628 621006

**BUCKS COUNTY COUNCIL**, County Hall, Walton Street,Aylesbury HP20 1UA [www.buckscc.gov.uk](http://www.buckscc.gov.uk)

0845 3708090

Highways (Transport for Bucks)

0845 2302882

Citizens Advice Consumer Helpline

0845 4040506

**WYCOMBE DISTRICT COUNCIL**

Queen Victoria Road, High Wycombe HP11 1BB

[www.wycombe.gov.uk](http://www.wycombe.gov.uk)

01494 461000

**SCHOOLS**

Claytons County Combined, Wendover Road, BE, SL8 5NS

[www.claytonsprimary.uk.org](http://www.claytonsprimary.uk.org)

01628 525277

Little Marlow School, School Lane, Little Marlow SL7 3SA

[www.littlemarlow.bucks.sch.uk](http://www.littlemarlow.bucks.sch.uk)

01628 473316

St Paul's School, Stratford Drive, Wooburn Green HP10 0QH

[www.st-pauls.bucks.sch.uk](http://www.st-pauls.bucks.sch.uk)

01628 521553

The Meadows School, School Road, Wooburn Green

HP10 0HF [www.themeadows.uk.org](http://www.themeadows.uk.org)

01628 521634

Wye Valley School, New Road, Bourne End SL8 5BW

[www.wyevalley.bucks.sch.uk](http://www.wyevalley.bucks.sch.uk)

01628 819022

**WOOBURN & BOURNE END PARISH COUNCIL**

Council Offices, Town Lane, Wooburn Green HP10 0PS

[www.wooburnparish.gov.uk](http://www.wooburnparish.gov.uk)

01628 522827

**LITTLE MARLOW PARISH COUNCIL**

Community Office, The Pavilion, Church Road, Little Marlow

SL7 3RS

[www.littlemarlowparishcouncil.org.uk](http://www.littlemarlowparishcouncil.org.uk)

01628 890301

travel counsellors 

Taiormade trips

# BEACH

HOLIDAYS

honeymoons  
city breaks





As your local Travel Counsellor with years experience in the travel industry, I can tailor-make your perfect holiday. Available at a time to suit you. I will provide an unrivalled level of personal service, taking care of all your travel needs down to the finest detail.

Everything you book with Travel Counsellors is financially protected including Hotels, low cost airlines and car rental at no extra cost.

**SUE CLARIDGE** Travel Counsellor

**T** 01628 524710 or 0845 058 7053 (local rates)  
**E** [sue.claridge@travelcounsellors.com](mailto:sue.claridge@travelcounsellors.com)  
**W** [www.travelcounsellors.co.uk/sue.claridge](http://www.travelcounsellors.co.uk/sue.claridge)

Travel Counsellors is a fully qualified financial professional service provider



## The Kings Head

Church Road, Little Marlow  
Tel: 01628 484407

We serve a wide variety of hot and cold food every lunchtime and evening and all day Sunday from 12 noon to 7pm, plus a good selection of cask conditioned ales and fine wines. In the wintertime there are log fires and in summer a large garden. The Pavilion function room caters for any type of party including conferences for up to 50 people. Please telephone 01628 484407 for details.

# BUCKS DISCOUNT CARPET WAREHOUSE

*"For a welcome home"*

- 25,000 sq m of carpets in stock
- Vinyl department with huge stocks
- Superb new rug department: fantastic selection
- 1000's of samples for selection

**'Simply the best'**

For friendly, professional advice from a well established local family-run company. Visit our showroom or call us on

**01628 522716**  
**Fax 01628 529076**

32 The Parade, Bourne End  
[www.bucks carpets.com](http://www.bucks carpets.com)  
 e-mail: [sales@bucks carpets.com](mailto:sales@bucks carpets.com)

## Joe Griffin TV AERIAL SERVICES

- Poor Reception Solved - Aerials repaired & supplied
- TVs - Hiring or you will for you. Also supplied & tuned
- Extra TV Points - For aerial and Sky (As HD)
- Sky TV - Also Foreign Language TV

Call Marlow  
**01628 439115**

A part of  OXFORD AERIALS

## STEVE HOBSON Plumbing & Heating

Boilers, Gas Fires, Cookers,  
Servicing, Installations and  
Repairs,  
Gas Safety Landlord Certificates,  
Unvented Systems & Plumbing,  
Vaillant approved installer

Tel: 01494 524357  
Mobile: 07762 082984



## Pilates Matwork Classes

Beginners/Mixed Level and Intermediate  
One to one by Appointment

Venues - Abbotsbrook Hall and  
Upper Thames Sailing Club - Bourne End  
Little Marlow Pavilion  
Marlow Pilates Studio, High Street, Marlow  
**Call Sally on 0787 625 1967**

For fast, friendly & affordable  
taxation advice

## Tax Returns/Self Employed Accounts etc.

Home visits & evening appointments available

For a quote, ring Keith on  
01628 520426

or visit our website at

[www.randallassociates.co.uk](http://www.randallassociates.co.uk)

for further details

Keith Randall ATT

Randall Associates

30 Stafford Drive, Wooburn Green HP10 0QH

## BOURNE END ROOFING

- Re-roof our speciality
- New roofs & repairs
- Slating, tiling & leadworks
- Free estimate & 10 yr guarantee

Freephone 0800 298 3158

## DAVID HARRIS Electrician

FOR ALL YOUR DOMESTIC WIRING

Qualified & Experienced with  
Electricity Board - Part P

TELEPHONE: 01628 810349

## FOR HIRE

### St Mark's Church Hall

Various days & times available

Reasonable rates

Contact our parish phone

on 07949059187

## TO HIRE ABBOTSBROOK HALL

For Wedding Receptions  
Meetings, Dances, etc.

APPLY TO

MRS C SAMUELS

2 RED COTTAGES

WELL END

or telephone

01628 528936

AMPLE CAR PARKING SPACE



## Kingfisher

Building Consultancy

### Thinking of extending?

We offer:

- Full architectural design service
- Planning and building regs applications
- Extension, loft conversion & remodelling
- Party Wall surveyor services
- Building and development consultancy

For professional, friendly advice, please  
phone Bourne End (01628) 526998



**ALL THE LATEST NEWS ON**  
**[www.bourneendbucks.com](http://www.bourneendbucks.com)**  
**LOG ON NOW!**

## Chiropody

Bourne End  
Community Centre

Monday Mornings

**07986**

**606814**

For the treatment of all  
Foot Ailments

# The Phone Man

Need a new  
telephone  
socket for  
your  
computer or  
SKY box?

Need one moved or repaired? Broadband signal  
problems? Internal wiring problems? BT not  
interested or you don't want to pay their very high  
charges? Call John on **07709 895252** or **01494**  
**711744** for free advice, fast service, and quality  
work. All work and materials guaranteed.

[john.summerbelk@btinternet.com](mailto:john.summerbelk@btinternet.com)

## EMMETT CONSTRUCTION DEVELOPMENTS LTD

Extensions – Conversions

Refurbishments – New Buildings

Private & Commercial Work Undertaken

Tel/Fax 01628 524500 e-mail: [emmett123@btconnect.com](mailto:emmett123@btconnect.com)

## BRYAN NEWELL & SON

20 Fennels Farm Road  
Flackwell Heath



01628 524294 01628 525329  
07504010488

Plumbing & Heating  
Specialising in Bathrooms,  
Floor & Wall Tiling and  
Decorating

# FLU CLINICS

Drop in for your annual flu jab

**HAWTHORNDEN SURGERY – Saturdays October 5 & 12 – 8.30am to midday**

**POUND HOUSE SURGERY – Wooburn Green on Saturday October 12 from 8 – 11am. Bourne End on Wednesdays October 2 & 23 from 8 – 10.30am. NO APPOINTMENT NECESSARY – JUST CALL IN.**

# Bourne End Youth Club

The youth club was quiet over the gloriously sunny summer holidays but we have been busy behind the scenes getting ready for the start of our second year.

We are happy to announce our nomination for Group Project of the Year Award as part of the Wycombe Partnership Community Champions Awards 2013. We're all incredibly proud of the nomination and will be able to report on the award once we've attended the Awards Reception on September 26.

Can we urge you all to shop at the Beaconsfield branch of Waitrose as we are thrilled to have been accepted for one of their charity boxes! So please put your green coins into Bourne End Youth Club's box and help raise funds and awareness.

We would like to extend our thanks to the Lions Club of High Wycombe for the very generous donation of a brand new air hockey table for the club. We know the kids will be thrilled as it was their suggestion! So a huge thanks to the Lions Club. If anyone has equipment or games that they would like to donate to the youth club, we will always gratefully accept donations. We're particularly looking to expand the Xbox game collection.

One final note is to ask you all to put a date in your diary for our fundraising Quiz Night on November 22. Last year's event was a great success and raised much needed funds to maintain the youth club and we hope to continue that success. More details will be available soon.

We're open for new members, so if you have or know a child aged between 11 and 15 who would like to come and check the club out, please tell them to come in and see us on a Monday evening.

*BEYC is open to children between 11-15 years old and runs every Monday evening 6.30-8.30pm at St. Marks Church hall. For more information, contact [secretarybeyc@yahoo.co.uk](mailto:secretarybeyc@yahoo.co.uk) or come down and speak to the Club Leaders Kylie and Emily.*



**New Denture Studio**  
Relocated from 461 Bath Road near Burnham

**Denture technicians dedicated to providing beautiful cosmetic dentures direct to the public since 1989**

- Denture design experts
- Competitive pricing
- Denture repairs while you wait
- One year money back guarantee
- FREE customer car park
- Latest teeth & materials
- Cosmetic denture facelifts

**Eat, talk & smile with confidence**

**DENTURE PROBLEMS?** Call Andy for honest, friendly advice and book a FREE consultation  
01628 521003 or 07970 058506

**17 Straight Blt, Flackwell Heath, Bucks HP10 9LS**  
(Opposite Postgens, 1 mile from M40 J10)  
Andrew Dougan Dip CDT RCS (ENG) RDT Clinical Dental Technician GDC No. 102175

[www.denture-world.co.uk](http://www.denture-world.co.uk)

**Bourne End Home Security Systems Ltd.**

DOMESTIC AND COMMERCIAL  
INTRUDER ALARMS  
CCTV  
INTERCOMS  
SECURITY LIGHTING  
FIRE ALARMS

- Local privately owned company
- ESA & insurance approved
- Audible and monitored systems
- No handling contracts
- Existing systems maintained and repaired
- 20 years experience
- NACOSS NSI Gold monitoring

**01628 520162**  
rogers@barn@behss.co.uk  
[www.behss.co.uk](http://www.behss.co.uk)

At The Courtyard  
Furlong Road  
Bourne End  
SL8 5AU

Your local security expert  
For a FREE survey, contact us today!

**Stressed and can't sleep?  
Aches and chronic pain? Low energy?**

**Yoga at Bourne End Library**  
**Tuesdays 6 – 7.30pm**  
**Relax, re-balance and re-energize**  
**FREE TRIAL**  
**Text/Call: 07932 038202**

**David Farmbrough**

PROPERTY MAINTENANCE

- CREATIVE LANDSCAPING
- PATHWAYS & PATIOS
- DECKING & FENCING
- BRICKWORK & DRIVEWAYS
- ROOFING & GUTTERING
- GENERAL BUILDING

01628 527899 • 07796 952465

**Bed and Breakfast**

THE OLD COTTAGE  
HEDSOR ROAD  
BOURNE END  
SL8 5EE

[www.theoldcottagebourneend.co.uk](http://www.theoldcottagebourneend.co.uk)  
Tel: 01628 521348  
Mobile: 07796 938369

[stacey@theoldcottagebourneend.co.uk](mailto:stacey@theoldcottagebourneend.co.uk)

**BROOK HOUSE VETERINARY SURGEON**

61 - 63, The Parade, Bourne End  
Tel: 01628 525274  
[enquiries@brookhousevet.co.uk](mailto:enquiries@brookhousevet.co.uk)  
[www.brookhousevet.co.uk](http://www.brookhousevet.co.uk)

# Help where it is needed

**CAREERS**  
**Springboard**

**The Chilterns, South Bucks & High Wycombe self-help group for managers and professionals seeking work.**

We meet at 7.30pm on Mondays at St Andrew's Church Hall, 12 Packhorse Road, Gerrards Cross, SL9 7QE.

New members are always welcome so why not join us? Membership is FREE.

Visit our website [www.careersspringboard.info](http://www.careersspringboard.info) for full details of contacts, our programme of meetings and a map of how to find us.

CV Writing  
Interviews  
Self Confidence  
Networking

Over 20 years ago Careers Springboard was founded to help redundant and unemployed managers and professionals in South Bucks get back to work. To date the charity has helped over 2,500 people return to employment. Membership and job search services are free with volunteer organisers and helpers having been involved with redundancy themselves. They understand the feelings and needs of those in that position.

Weekly meetings cover a huge range of topics and all the speakers are familiar with current job search techniques. Group discussions provide an opportunity to share experiences. Specialist advice is available, personal coaching sessions can be arranged along with individual counselling if necessary.

Careers Springboard enables you to identify your skills and apply for positions in industries and organisations which you may not have previously considered. Advice is provided on starting your own business or undertaking consultancy and interim management.

Meetings in October include Monday 7, Creating a Good Impression, Monday 14, Using LinkedIn in your job search, Monday 21, Communicating with ease,

Monday 28, The Interim and Contract Market. In November on Monday 4 it is Interview Preparation, Monday 11, Handling the Interview, Monday 18, Telephone Networking and Monday 25, What the Recruiter is looking for.

All meetings take place at 7.30pm on Mondays at St Andrew's Church hall, 12 Packhorse Road, Gerrards Cross SL9 7QE. There's a full programme of meetings available on the website at [www.careersspringboard.info](http://www.careersspringboard.info)

## Apology

Sincere apologies to Abdul Halim from the Last Viceroy for the incorrect spelling of his name in the August/September issue of Target. The restaurant hosted the final fund-raising event before Ollie Garnett

and his family went off to the USA for the little boy's highly specialised surgery. The December/January issue of Target will include an update on Ollie's progress since returning home.



**ALL THE LATEST NEWS ON**  
**[www.bourneendbucks.com](http://www.bourneendbucks.com)**  
**LOG ON NOW!**



**K ROWE & SON**  
**BUILDING RENOVATIONS**

- Roofing
- Chimney Pointing
- Guttering
- Fascia boards
- Brickwork
- Patios/Decking
- Maintenance
- Plastering
- Painting
- General Carpentry
- Electrical Work (Part P approved)

**Tel: 01628 851185**  
**Mob: 07594 551006**  
**www.kroweandson-building.co.uk**

**Est. 1979**

**BAREFOOT COUNSELLOR**  
Conveniently visiting you at home  
10am to 8pm – Mon to Sat  
Telephone or text  
**07841 474398**  
[www.barefootcounsellor.org.uk](http://www.barefootcounsellor.org.uk)

**JDM PLUMBING & HEATING LTD**

24 New Road  
Bourne End  
Bucks SL8 5BH

Tel/Fax: 01628 529434  
Mobile: 07796 928993

**Jamie De Muijnck**  
Director

**safe**  
202724

**THE EXERCISE CLINIC**

**The Community Gym based at Wye Valley School**

- \* Exercise Referral
- \* Circuit Classes
- \* Cardiac Rehabilitation Classes
- \* Fitball Classes
- \* Personal Training
- \* Sports Massage
- \* Wide range of equipment
- \* Open from 7am
- \* We pride ourselves on putting the members first

\* Our qualified staff will guide you to achieving your goals whether you are a beginner or improving your fitness and age is no barrier.

The gym has proudly won two member achievement awards in the National Fitness Awards.

Prices start from £25 per month

[www.exerciseclinic.co.uk](http://www.exerciseclinic.co.uk) [jason@exerciseclinic.co.uk](mailto:jason@exerciseclinic.co.uk)

Telephone: 01628 528226 **Improve your health, feel better and look great!**

**fairfield framing**

Bespoke picture framers  
in Bourne End

**01628 529646**  
**07976 883856**

[debparrish@aol.com](mailto:debparrish@aol.com)  
Established since 1976.

# THE RIVET CHALLENGE

Be the closest guessing how many new rivets were used in Bourne End's bridge renovation and you will have your name on the bridge's plaque for posterity!

Plus more prizes for the winner and runners up!

The competition is open to anyone between aged 4 to 15



The contractors who carried out the massive repair work on Bourne End's bridge, Osborne, have teamed up with *Target* magazine to offer this money-can't-buy competition prize.

As *Target* went to press Osborne were ahead of schedule on the bridge work, in spite of a terrible weather start, and they told us they wanted to do something locally that would leave its mark on the community, especially young people.

The main work on the bridge was to replace worn, old and damaged rivets; the power force holding everything together. Then the bridge was painted green to blend with the rural location, completely different from the previous industrial grey colour.



The repair work was frequently noisy, often dusty and work on each span had to be done and finished before the scaffold could be moved to the next span. Supplies came in by road to the marina and were ferried down to the bridge or were brought in by barge.

The Rivet Challenge is to try and work out how many new rivets went into the restoration project. Remember that not all the rivets needed replacing. While you can see all the bridgework from the footbridge there are corresponding bridgeworks on the upstream face of the bridge (if you come up with a number you might need to double it to get the final figure).

So the bridge will have a completely new look and key elements will be recorded on a commemorative plaque which will go up on the bridge and be unveiled when the work is signed off by National Rail – the official presentation and unveiling will probably be early 2014.

The winner's name will be on that commemorative plaque which is likely to be there for at least 50 years, so they will be able to bring their children and possibly even grandchildren to see it!

To enter simply write your guess on a postcard (or the back of an old envelope) and drop it in to the community centre, or library or post it to the centre (address page 2): Tell us your guess, your name, school, age, address and telephone number. Schools will also be issued with entry forms. The closing date is November 4.

*Competition entry details will not be shared with anyone. The winner will be the person judged to have guessed the closest to the correct amount and will be judged by an Osborne and a Target representative. All entries will then be shredded.*



Above, before and after pictures of the bridge work and right, new and old rivets. Top left a section of the bridge showing rivets.



## Open Day Invitation

Join us on Saturday October 12 from 2pm for a FREE hog-roast to celebrate the launch of our new menu. In the evening there'll be live music!

We hope to see you here!  
Children and dogs welcome



## The Black Lion Roars Again

The new owners of The Black Lion in Well End extend you a warm welcome...

This quaint pub has been at the centre of the Well End community for more than 200 years. Under this new ownership it will remain a quintessentially English pub, but will be offering a new menu of traditional pub grub "with a twist". They will also be offering a special Sunday three-course lunch with a choice of meats as well as alternative dishes – to suit all tastes. Alongside a menu of traditional fare there'll be a specials board to add variety for regulars. What will remain a constant is the quality of the beers, wines and food on offer. The Wine List will feature bin-ends at retail prices. And on chillier nights there will be a welcoming open fire.

The Black Lion, Marlow Road, Well End,  
Bourne End SL8 5PL Telephone 01628 520421

Get fit this year... join in at a local sports club!

# Ben's passion for history goes to sea...

Ben Wilson grew up in Bourne End and his passion for history started locally through the pages of Brian Wheals' book: *Theirs were but human hearts*. Ben spent hours finding the places mentioned in Brian's history going back over 2,000 years. History formed Ben's academic life at Pembroke College, Cambridge both as an undergraduate and post graduate.

His first book was published in 2005, when he was 25, and two further books followed. His new book: *Empire of the Deep* tells the story of the British Navy over 2,000 years. Ben gives his readers a huge chunk of naval history, through the days when there were very few boats, to the great days of naval domination, historic battles at sea and, of course, Admiral Lord Nelson who he sees as the greatest admiral of all time.

Ben finds unexpected stories in the course of his research. He delights in revealing that both pirates and admirals used the sea to move themselves up the social ladder. Then Ben goes a stage further with

a German U-boat commander of the Second World War renowned for his grit and coolness in battle. From Britain ruling the waves in the 18th and 19th centuries he moves forward into new technology and the need for long-range gunnery.

The book, published by Weidenfeld and Nicholson, has been very well reviewed and Ben was the subject of Meet the Author on BBC2 interviewed by Nick Higham. The illustrations of naval ships in full sail are tremendous and go a good way to proving Turner's *The Fighting Temeraire* is the nation's favourite painting.

Ben, now married with a young son and a new addition on the way, managed to combine his research with looking after Conrad. They are pictured here with a copy of Daddy's book. As a boy brought up in Bourne End, about as far from the sea as you can get, he says "Bourne End seems a long way from the sea. But it is where the book begins,



at Sashes Island in Cookham which King Alfred fortified to prevent Viking incursions from the sea.

"All of Britain is connected with the sea one way or another; it is a part of our history we sometimes take for granted and one of the reasons I wanted to write about the Royal Navy."

Look out for it in the library and, if necessary, order it. You won't be disappointed if you enjoy history, especially when, as an island nation, we are surrounded by something that shaped this country over 2,000 years.

## Call in for coffee...

Here at the Day Centre in Wakeman Road we have an open coffee morning on Tuesday October 1 at 11am. People who might be interested in the services provided at the Day Centre are very welcome to come and see what we do. You can phone on 01628 527024 if you have any queries.

### MORE THAN JUST A SPORTS STORE!

THE SHOP FOR THE VERY BEST QUALITY AND KEENEST PRICES IN SPORT CLOTHING AND EQUIPMENT  
IT PAYS TO DEAL WITH THE SPECIALIST

PRINTED AND EMBROIDERED TEAMWEAR & CORPORATE WEAR A SPECIALITY  
RACKET RE-STRINGING DONE ON THE PREMISES

77/78 THE PARADE,  
BOURNE END  
BUCKS  
SL8 5SX



Tel: 01628 819242  
sales@hawkinsport.co.uk

[www.hawkinsport.co.uk](http://www.hawkinsport.co.uk)



## FreTime Bourne End (care and activity service)

For day care that's unsurpassed

At your community service, we offer a broad range of opportunities for:

- older people needing care, support and company
- those with mobility needs
- dementia

**Trained carers \*\* Personal care \*\* Hair dressing \*\* Activities**

**\*\*\* Now welcoming new clients \*\*\***

*Bringing the community together*

The Fremantle Trust, in partnership with The Friends of Bourne End

Telephone: Helen on **01628 527024** or just pop in for a chat

**FreTime Bourne End**, Wakeman Road, Bourne End, Buckinghamshire, SL8 5SX



## Bourne End Charity Christmas Fun Night and Late Night Shopping

Friday December 6 from 5 until 8pm

Bourne End Community Association, the Rotary Club of Cookham Bridge and local businesses have organised this year's annual event in the village.

The fun will start at 5pm when the 2013 Children's Christmas Light will be switched on by its young designer. Please encourage your children to enter this competition through their schools.

Bourne End shops will be full of Christmas cheer and selling until late and there will be events and games for children and adults.

Santa will be in his Grotto at the Bourne End Motor Company's showroom, Brook House Vets will have a display of *Snakes and Fluffy Bunnies*, and the library will have children's face painting and a treasure hunt with hot mulled wine for grown ups.

There will be a children's funfair, a bouncy castle, Hawkinsport games and much more. Music will be provided by school and church carol singers and Bassically Saxs who will play Christmas favourites.

There will be free beer tasting courtesy of Marlow's Rebellion Brewery. Scouts will be selling hot chestnuts and drinks on The Parade and there will be hot dogs, mulled wine and mince pies for sale. Thanks to our local councils there will be free parking in the Wakeman Road Car Park.



## Trees inspire Art in the Library

Sarah Luton paints landscapes and finds trees truly inspiring. "I love the way light can make one tree look special when it's among other trees" she says "and I prefer to go out and paint. I have always loved the beauty of our local landscape." In November Sarah will be the artist in the library and, from among her many landscapes she has decided to concentrate on trees for Bourne End.

Sarah studied graphic design at college then went into advertising but found herself working constantly on a computer. "I felt my talent was being wasted" she admits "so decided to start painting what I loved." This decision worked well with marriage and being a mum. It also provided some time for her musical talent - she plays double bass and concertina in a number of small groups as well as Maidenhead Concert Band.

This autumn has been a busy one for Sarah with an exhibition in Cookham Parish Centre, and exhibiting as part of Wooburn Festival's Visual Arts Exhibition. She works in oils, watercolours and pastels. More recently she has started using acrylics like students in her art class. Before you come along to see Sarah's work visit her website at [www.sarahluton.com](http://www.sarahluton.com)



# WOOLLCOTTS

THE DRY-CLEANERS

-  DRY CLEANING
-  COMPLETE IRONING SERVICE
-  SHIRT & LAUNDRY SERVICE
-  WEDDING & EVENING WEAR
-  CURTAINS & UPHOLSTERY
-  REPAIRS & ALTERATIONS

PROVIDING PROFESSIONAL DRY CLEANING FOR 20 YEARS

7 ARIES HOUSE | STRAIGHT BIT  
FLACKWELL HEATH | BUCKS | HP10 2NE  
T: 01628 532941 | WWW.WOOLLCOTTS.COM

## 10% OFF

FREE DELIVERY & COLLECTION FROM HOME OR WORK

2 PIECE SUIT FROM £71.55  
JACKETS FROM £75.00  
TROUSERS FROM £5.50  
SKIRTS FROM £3.50

ALL DRY CLEANING WITH THIS VOUCHER VALID UNTIL 30TH NOVEMBER 2013

## Sapphire

Elegant dresses

For hire and sale:

- Evening
- Prom
- Parties
- Wedding Brides
- Luncheon

For sale only:

- Mother of the Bride/Groom
- Bridesmaids
- Special Occasion

Excluding sale and special occasion. Age and quality.

Open 9.30am - 5.30pm  
Monday - Sunday

Out of hours by appointment.  
Sunday

11-13 Wendell Lane, Wendell Green, EPP1 9HT  
Tel: 01628 530 516 - [www.sapphireindresses.co.uk](http://www.sapphireindresses.co.uk)




11-13 Wendell Lane, Wendell Green, EPP1 9HT  
Tel: 01628 530 516 - [www.sapphireindresses.co.uk](http://www.sapphireindresses.co.uk)

Facebook: [www.facebook.com/SapphireIndresses](https://www.facebook.com/SapphireIndresses)  
Twitter: [www.twitter.com/SapphireIndresses](https://twitter.com/SapphireIndresses)



**Open weekends winter-time for food and log fires**  
**Call 01628 520056 for directions**

## Bourne End Electrical



All your electrical needs catered for

Quick and efficient service

Test & Certification  
New Fuse Boards  
Upgrades & Repairs  
Interior & Exterior wiring  
Outside Security Lights  
Switches & Outlets

Ring Stephen on  
01628 850968  
07790 546975

Bourne End (Bucks) Community Association

# Bourne End Concert Orchestra

## Sunday 6 October 2013

7.45pm in the Community Centre, Bourne End

Tickets £10 from the Community Centre  
Breeze Ladies Fashion, Bourne End  
or Telephone: 01628 522054 or 01628 522004



Sibelius : Finlandia  
Dvorak : 8th Symphony  
Walton: Orb and Sceptre March  
and music by Verdi, Bizet and Grieg



Sponsored by Emilio and Kerry  
Local Costa Coffee Franchisees  
67 The Parade, Bourne End



### RELIABLE PROFESSIONAL SERVICE FOR:

- RODENTS • COCKROACHES • ANTS • FLEAS
- BED BUGS • FLY KILLER UNIT • BIRD CONTROL
- WOODLICE • GREY SQUIRREL • WASPS & BEES
- FLY CONTROL • FLY SCREENS

### EMERGENCY CALL OUT

DOMESTIC & COMMERCIAL • FREE SURVEY • FULLY INSURED

Don't be bugged ring us now

23 Years Experience  
Unmarked Vehicles

# 01628 525025



## Secondary Maths Tutor

Qualified Maths teacher in Bourne End for one to one help.

- Common Entrance
- Key Stage 3 and GCSE
- AS/A Level

T: 01628 531521

E: [kath.acres@spadeoakfarm.com](mailto:kath.acres@spadeoakfarm.com)  
[www.spadeoakfarm.com/Tutors](http://www.spadeoakfarm.com/Tutors)

# Bourne End

# Cards & Gifts

With your support,  
we have made it to our 2nd Birthday!  
Hurrah!

# Thank You

We promise, we will continue to offer.....

- Great value for money
- An eclectic range of gifts
- A fun place to shop

I'm off to a lovely Trade Fair to find some new and exciting gifts ready for Christmas! Yippee!...



...and I'm off to phone the Bank Manager to increase our overdraft!



Dilly says....

When it rains, look for rainbows,  
when it's dark look for stars.

19 The Parade, Bourne End, Bucks SL8 5SB  
Tel: 01628 521509 Email: [tony@bowlerwright.co.uk](mailto:tony@bowlerwright.co.uk)

## **Probus By Howard Fitzer**

David Macleod, our August guest speaker, carries with him a small mirror, lipstick and sewing kit. As a professional Redcoat Toastmaster it is all part of the service to his clients. Members of his profession offer far more than simply proposing a toast; they are also trained to offer a complete service of assisting at or organising a social gathering.

Early toastmasters wore black tie and tails but were mistaken for waiters. William Knightsmith (who made announcements at the 1908 Olympics) adopted the red coat which remains the most prominent feature of the uniform.

The origin of the "toast" was to reflect the habit of dropping burnt toast into bad wine to reduce its acidity, and raising the glass was to observe that no poison lurked in the bottom.

The club is now accepting new members. We meet for lunch on the third Wednesday of the month at the Grovefield House Hotel, Burnham with a guest speaker except in June and December when we entertain the ladies to lunch. There are also club outings. Contact Brian Print on 01628 523739.

## **Wooburn WI By Sue Pressney**

We spent a lazy August afternoon enjoying afternoon tea overlooking the River Thames. We are grateful to our hostess and to Dorothy and Jean for making the delicious cakes. The Bring and Buy boosted our funds nicely.

In September our talk by Mr Dixon highlighted the role played by animals in the First World War, particularly horses. Even today dogs are used in locating explosive devices in Afghanistan.

Our October talk has the intriguing title "*Talking to the Walls*". At our AGM in November we elect our committee, followed by a quiz.

We meet on the first Wednesday of the month in St Mary's Church Hall in Glory Mill Lane at 2.15pm, and you are welcome to join us. Ring 01628 52739 for more information.

## **Little Marlow & Well End WI By Diana Spokes**

At the Summer Show the Potato Growing Competition was won by Val Bennett who harvested from one potato plant a crop weighing over 4lbs. Other classes were won by Lesley Rogers, Brenda Burton, Jean Barltrop and Pat Woolliams. Congratulations to all who took part.

The Institute supported the Little Marlow Village Fête again by donating cakes for the Fête Teas.

A recent Cream Tea held at June Baxter's home raised £143 for WI funds, and 22 members enjoyed a very pleasant afternoon.

Trips to National Trust Nuffield House and Brighton were greatly enjoyed.

The Carrington Group Meeting in October will be hosted by Wooburn WI in St Mary's church hall, Wooburn.

At the September meeting Mr R Powell gave a talk on Royal Mistresses. Quite an eye-opener. At the October meeting Mr B Harding-Jones will be talking about his work as a paramedic. November is our Annual Meeting with election of the committee. The craft group are busy making items to sell on their craft stall at Hazlemere Community Centre on November 9. The book group, Cover-to-Cover Girls, and the rambling group meet regularly.

Meetings are held on the first Tuesday of the month in Little Marlow Pavilion and visitors are welcome.

## **Glory Mill Bowls Club By John Palfreyman**

The off-the-green working party - Mike and Shirley Churn, Tony Gammond, Tony Rockell and John Palfreyman - tackled work ranging from cutting overgrown hedges to restocking flower beds and cutting side lawns. Their voluntary work enables the club to keep its membership fee at just £50.

Glory Mill Bowls Club (Wooburn Green) is looking for new members. It enters teams in indoor bowls during the winter season and offers free coaching, the loan of bowls, roll-ups and coaching on Tuesday and Friday evenings. Ring 01494 673859 or email shirley.churn@btinternet.com

## **Inner Wheel Club By Diana Hyde**

Strawberries and Pimms on a balmy July evening made a wonderful start to President Elaine's year in office. A new member was inducted, and a horticultural quiz proved challenging. We visited The John Lewis Heritage Centre in August for a talk by the archivist about the origins of the John Lewis Partnership and saw the amazing fabric collection, including materials used on the Titanic and the Royal Yacht. In September, a member will talk about her adventures in Cuba. 'Guilty or not Guilty' will be the subject of our October meeting on jury service. This will follow a visit to High Wycombe Magistrate's Court the day before.

## **Bourne End WI By Jean Roche**

Some members went to the WI Denman College in August for a Bucks Federation Weekend. Enjoyable courses on offer were Patisserie, Craft and Wardrobe Wizard.

In September a talk and demo on the art of the chinese wok was followed by a tasting of the delicious dishes. There was also a trip to Buckingham Palace to see the coronation robes and of course tea on the palace lawn.

On Thursday October 10 at the Community Centre, we are holding an evening of singing and dancing to the tunes of Abba, with quiz, raffle and refreshments. Tickets cost £10 from bourneendwi@yahoo.com

Our WI meetings take place on the first Thursday of every month in St Dunstan's Church Hall at 7.30pm. Our WI Craft Group meets on one Tuesday afternoon a month at the library.

## **Bourne End & Cookham Rotary Club By Richard Monger**

We sponsored the Upper Thames Sailing Club's Junior Bourne End week, when it was nice to see the sail we donated being used by such enthusiastic youngsters. Rotary hoodies were won by Jacob and Emma.

In the spring we bought a gazebo to advertise our club; so far it has only been to Flackwell Heath Cherry Fair and my back garden (for the Rotarians to see where their money went). We are hoping to use it more often next year. We raised the money to buy the gazebo via a Rotarians-only event, not from collections.

Young Ollie Garnett has come back from St Louis after what seems to have been a successful operation. Our club paid for the family's airfares. We have also inducted a new member, Maureen Hudson, who I am sure will be a valuable asset to our club.

We played petanque in the garden of the Kings Head, Little Marlow. About 100 Rotarians and Rotaractors had a great time, with teams from as far away as Farringdon and Easthampton.

Our new district governor, John Greening, visited our club, and said adding all the Rotarians, Inner Wheelers, Rotaractors, Interactors and RotaKids we could well be the largest Rotary family in our district.

A while back our Rotaract Club ran a music quiz and raised £675. It was given to the Iain Rennie Hospice at Home as one of their members last year had reason to experience their amazing support.

And finally, congratulations to one of our Rotarians, Arian and his wife Jerry, who are now parents of a lovely little boy, Rian. Hopefully a Rotarian in the making!

See [www.facebook.com/beacrotary](http://www.facebook.com/beacrotary) and [www.beac-rotary.org.uk](http://www.beac-rotary.org.uk)

## **Upper Thames Sailing Club By Debbie Kite**

At the Club Championships in July over 20 boats sailed on the Saturday in warm weather with slight winds. On Sunday it was wet and gusty with a number of capsizes. The clubhouse was full on the Saturday evening for supper.

Twenty young sailors (and one adult) achieved RYA sailing qualifications after a busy training week on the water.

Then cadet sailors enjoyed an RYA Champion Club Race Camp staying at the club with coaching from RYA trainer Sam Rowe.

In August we heard that our application for £50,000 of National Lottery funding from Sport England was successful. The Inspired Facilities fund grant will help update parts of the clubhouse, including new showers and non-slip flooring, better insulation of the ground floor, and a heat pump.

Club racing and training carries on into the autumn, with the club hosting three open weekends, including the OK National Youth Championship.

Ring 07732 405304, see [www.utsc.org.uk](http://www.utsc.org.uk), or ask any member if you are passing by.

**ALL THE LATEST NEWS ON**  
**www.bourneendbucks.com**  
**LOG ON NOW!**

**Fancy a day out by coach?**

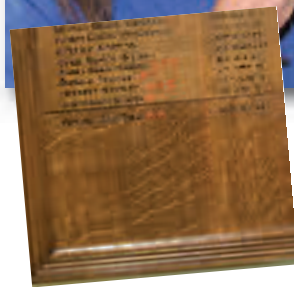
Join Jamie and the gang picking up in  
 Marlow/Bourne End, Wooburn  
 & Flackwell Heath

Saturday October 5  
 London sight seeing tour and mini  
 Thames Cruise with Blue Badge Guide  
 at £29 each

Wednesday November 20  
 Shopping at Harrods, fish & chip supper then  
 a tour of London's Christmas lights  
 at £24.50 each

Sunday December 8  
 Rochester Christmas Market &  
 Dickensian Christmas Festival  
 Adults £17.50 Children (u12) £13.50

For details of these and other trips contact  
 Jamie on 07714 583215  
 or email james.fyfe2@ntlworld.com



**Church all set for  
 150 years!**

by John Rosewarne

Like most old churches St Nicholas' Hedsor has a board recording the names and dates of all past Rectors. Ours goes back to the 13th century.

Eight years ago the church recognised that it was facing a bit of a problem. With the retirement of Rev John Sclater the board was absolutely full and there was no suitable place

to locate a new board. The problem was just ignored.

With the unexpected retirement of the Rev Ann Trew the problem had to be faced as there was nowhere to record her tenure. After much scratching of heads a solution emerged – there was space for a larger board but the sign-writing costs for a new board would be astronomical.

Obviously the solution was just to make the existing board bigger. But how could this be done? – the board is of oak with a very unusual grain and is rather splendid. So just nailing another plank on the bottom would perhaps not be the best solution.

Colin Mantripp, the local woodworking magician, was approached as the church already has a number of examples of his skills. Colin decided it was possible and he undertook the task. The extended board is now back in the church complete with the details of Rev Ann's tenure. It is an excellent piece of craftsmanship enhanced by the

fact that Colin managed to find a piece of old oak with the same grain pattern as the rest of the board.

The extension should, given a bit of good fortune, last for the next 150 years – when there will be a serious problem!

**A Complete and Comprehensive Tree Care Service since 1907**

Tree & Shrub Pruning | Planting | Tree Removal  
 Woodland Management | Health & Safety Reports  
 Disease & Insect Control

For a free consultation please contact your local arborist

**01494 677 889**  
**beaconsfield@bartlettuk.com**  
**www.bartlett.com**

**Don't Miss this!**  
**Sunday November 24**  
**BIG BAND CONCERT**  
 in aid of THROB (The Heart  
 Rehabilitation Organisation of  
 Berkshire) at the community centre  
 7.30pm. Tickets £11 from the  
 community centre office, include  
 coffee/tea and a mince pie.

**Footcare4you**

A complete foot health consultation and treatment in the comfort of your own home or visit one of my foot health clinics in Bourne End or Wooburn Green.

- Nail cutting & filing
- Callus, corn and hard skin removal
- Ingrown, thickened and fungal nail treatments
- Treatment of verrucae and warts

**Dianne Ward** Dip. Pod., M.C.P.P., M.A.P.F.P.  
 Foot Health Practitioner

Telephone **01628 527192** or **07704 991689**  
 for an appointment  
 Email: [footcare4you@btinternet.com](mailto:footcare4you@btinternet.com)

Qualified Foot Health Practitioner and registered member of the Association of Foot Health Practitioners and podiatrists of the British Chiropractic and Podiatry Association (BCPPA)

**The Pentagon Clinic**  
 Osteopathy and Physiotherapy

Stella Halpin B.Sc. (Dist.)  
 Brenda Case BA (hons), DC DPO  
 David Turner B. Ost.  
 Monag Bowie M.C.S.P. M.H.P.C.  
 Sally Checkley M.C.S.P. M.H.P.C.

Wharf Business Centre  
 Wharf Lane, Bourne End  
 Bucks SL8 5RU  
 Tel: 01628 533200  
 Fax: 01628 527455

email: [info@pentagonclinic.co.uk](mailto:info@pentagonclinic.co.uk) www.pentagonclinic.co.uk  
**Tel: 01628 533200**

Following the closure of The Redgrave Clinic, we have opened a new practice - **The Pentagon Clinic.**

Our highly qualified and established Clinical Team continue to provide Osteopathy, Physiotherapy, Cranial Osteopathy, Pilates and Sports Massage for all ages. We all have a wealth of experience in the assessment and treatment of a wide range of musculoskeletal conditions.

# Powerline

HOME SERVICES

Electrical work

Plumbing work



Contact:  
Peter Druce 07748 836359

NO JOB TOO SMALL/FULLY INSURED

# BASL

## BUILDING & MAINTENANCE LTD



Mathew & Paul Billingham - *Seventh generation builders*

t: 01628 298185 w: [www.BASLbuilding.co.uk](http://www.BASLbuilding.co.uk) e: [Mathew or Paul@BASLbuilding.co.uk](mailto:Mathew or Paul@BASLbuilding.co.uk)

Barbering, hairdressing & beauty

CUTTING EDGE

## Cutting Edge Hairdressing

Organic colours and illuminated blush cut/blow dry.

## Gentlemans Barber Shop

Providing discerning men with the finest in haircutting and grooming products. Established since 1996.

## Cutting Edge

*Beauty Rooms*

We offer a wide variety of treatments along with a personal and professional pampering service.

## All in one hair, beauty and barber shop

49 The Green, Wooburn Green, HP10 0EU

Tel: 01628 526070

[www.cuttingedgewooburn.co.uk](http://www.cuttingedgewooburn.co.uk)



Amersham & Wycombe  
College

## NEW Saturday College

### Make the most of your weekend!

*Explore new potential - Learn new skills - Have fun & make new friends*

What ever your interests, come and join in! Courses at both centres, you can take part in:

Animation & Video Production

Bridal Make-up

Bricks for Beginners

Fashion & Photographic

Make-up

Hair Styling

Landscape & Figurative Painting

Make Your Own Skin Care Products

Music Technology

Music Performance

Painting & Decorating for Beginners

Plumbing for Beginners

Special Effects Make-up

...and more!

## Starting from October 2013

0800 614 016

[amersham.ac.uk](http://amersham.ac.uk)

## Bourne End Library

By Inka D'Agostino, library manager

After our glorious summer, what better way to embrace autumn and prepare for winter than by increasing our wellbeing in mind, body and spirit. With this end in mind we have a number of classes, courses and events which might appeal!

**Yoga classes** are held every Tuesday evening from 6 to 7.30 pm, while during the day we have Tai Chi every Thursday at 1pm.

**Meditation** sessions take place on the first Tuesday of the month 1 to 2pm. Starting in November there will be meditation with complimentary healing, first Thursday of the month (November 7 and December 5) 8 to 9.30pm. There will also be two Saturday healing clinics from 10am to midday October 19 and November 16.

Finally a **Mindfulness** course will commence on Wednesday evenings, 7 to 9pm from November 6 for six weeks.

Our **Lifestyle Club** meets once a month on a Friday morning at 10.30am. Please join us for coffee and inspiring talks: October 25, a talk on Cliveden, November 29, by popular demand a further session on E gadgets, so please bring your electronic devices.

The nation's seventh national Get Online Week takes place October 14 to 20. Doing things digitally can make everything quicker and easier. We shall

be promoting and helping with an extra internet session on Friday October 18 from 10.30am to 1pm.

Regular internet sessions are held on the first Friday of the month 10.30 to 11.30am. Ancestry sessions from midday to 1pm

### Junior Activities

Pre-school children can join us for fun songs and rhymes with interaction and actions. Every Thursday Bounce and Rhyme 10.30 to 11.15am.

Please support our Junior Craft Show which will be on Saturday October 5, it is free to enter. The day's schedule is as follows:

9.30 - 11am: Drop off craft items at library

11.00-midday: Judging

Midday -2pm: Open for the public to look around

1.30 pm: Prize giving

**Espanolitos Spanish Club** is coming to Bourne End Library. Every Saturday, term time only, starting November 2. Set up by a local Spanish native mum-of-two, it provides fun and educational activities in two small classes (5-7 and 8-11 year olds). For information or to reserve, contact Lourdes on 01628 522853 or espanolitos-spanishclub@outlook.com

Finally, many thanks to Jane Douglass who ran our childrens' two day dance workshop during the summer. As it was a great success we will be holding a similar dance day during the autumn half-term on Wednesday October 30. For further information and to book any of the events please contact the library on

0845 2303232 or lib-boe@buckscc.gov.uk

All our events are on the Friends of Bourne End Library Facebook page. If you are on Facebook please like us and it will give you a chance to book directly.

## Bourne End Community Market



### Teddy Rose Gifts, Vintage & Collectables

By Victoria Pusey

I discovered Bourne End Community Market this year quite by chance. I was returning books to the local library and the market was bustling. The tables were beautifully presented and the smell of the homemade produce was delicious.

I had my first table in February (just in time for Valentine's Day) and it was a really lovely morning. So much so, that I couldn't wait for the next month.

My table for March was laden with Mother's Day treats and goodies. Nothing terribly expensive, just thoughtful and pretty gifts with fresh flowers and pastel colours.

April saw the warmer weather and my table reflected this in shades of leaf green, yellow, pink and duck egg blue. Little gifts, for presents and the home. Or a well-deserved girly treat for those doing the shopping.

I have always loved little shops that have beautiful, practical and feminine things. Browsing and choosing means no rushing out to shop for a last minute birthday or thank you presents at the eleventh hour.

It gives me so much pleasure to source quality, inexpensive items and present my "own little monthly shop" at the Bourne End Community Market. 10am to 1pm every second Saturday of the month. There is car parking too.

Do pop in, we all look forward to seeing you!



Bourne End Book Group

*Clare Goodall*  
MOSAICS

One day & Weekend Mosaic Workshops  
Parties  
Community Projects  
Gift Vouchers available

email: clare@cgmosaics.co.uk  
www.cgmosaics.co.uk m: 07904 966367

**JG dance**  
Jeannine Griville Dance Academies & Theatre College

2½ - 18 years, Girls & Boys  
Beginner classes in Ballet, Jazz, Tap & Acrobatics  
FREE TRIAL LESSON

RAD, ISTD & LAMDA  
Classes up to Advanced 2  
Twice Yearly  
Theatre Performances

Call: 01491 572000 email: info@jgdance.co.uk  
BOURNE END - Wednesdays after School WWW.JGDANCE.CO.UK

**PAUL'S GARDEN SERVICES**

Hedge Cutting, Fencing, Patio's  
Turving, Tidy-Ups

Please contact Paul  
01628 529702 / 07723 061653  
27a West Ridge, Bourne End, Bucks SL8 5BU

**QUALIFIED  
CARPENTER/HANDYMAN**



- 25 years experience
- Reliable and friendly service
- All types of carpentry including:
  - Fitted kitchens
  - Doors, skirting & architraves
  - Flooring
  - Fitted wardrobes
  - General handyman/maintenance work

For a free & competitive quote call  
Paul on 07857 074523 or 01628 523314

*Slimming*  
WORLD

because you're amazing

*Join a warm and friendly group  
near you today...*

**Bourne End**  
Community Centre SL8 5SX  
**Tuesdays 5.30pm**

**Beaconsfield**  
Town Hall (next to Waitrose)  
HP9 2PP

**Mondays 5.15pm & 7.15pm**

**Call Dorothy 01494 676455**

Painter & Decorator  
**N. W. Upward**  
2 Fisherman's Way  
Bourne End

All wall coverings hung,  
Glazing & Wall Tiling.  
Estimates Free.  
**01628 528921**

**YOGA WITH LINDA**

Monday morning, Tuesday evening  
and Wednesday lunchtime  
Bourne End  
Ring: Linda Jolliffe 01628 521510

**HOMEOPATHY**

Qualified Homeopath  
**Sheila Carter**  
01628 521134

Stress? Anxiety? Depression?  
Talking helps. Confidential  
**COUNSELLING**

*John Ryder* MBACP  
01628 522401 ✪ Bourne End  
[www.johnryder.bacp.co.uk](http://www.johnryder.bacp.co.uk)

**Colin's  
Garden  
Services**

**Tel: 07884 262871**



**ALLAN WISE & CO  
ROOFING SPECIALIST**

**Complete Roofs or Repairs**  
**Large or small jobs**  
**Estimates FREE**

**01628 525740**

**R S HALL UPHOLSTERY**

*31 years experience*

ALL UPHOLSTERY WORK UNDERTAKEN

- \* Re-upholstery
- \* Sofas & Chairs
- \* Loose Covers
- \* Antiques
- \* Pubs & Clubs
- \* Schools
- \* Hospitals
- \* Office Chairs

Large  
Contracts  
Over 300  
fabrics  
available  
Free  
estimates

*Also fabrics at competitive prices,  
upholstery sundries and all  
sizes of foam*

Contact Bob: 07809 140988  
T: 01494 461481

E: [contact@rshallupholstery.co.uk](mailto:contact@rshallupholstery.co.uk)  
[www.rshallupholstery.co.uk](http://www.rshallupholstery.co.uk)

**Ridgeway Property Services**

- \* Landlords Gas Safety Certificates/Checks
- \* Plumbing/Heating Natural & LPG gas
- \* Boiler replacements & repairs
- \* Cooker repairs & installation
- \* Septic Tank & Sewage systems
- \* Rainwater Harvesting systems
- \* Lead flashings/Lead Work

Gas Safe 27328

T: 01628 310134 M: 07973289186  
E: [ljackson903@icloud.com](mailto:ljackson903@icloud.com)

[www.ijplumbingandheating.co.uk](http://www.ijplumbingandheating.co.uk)

**MANKIND  
MENS HAIRDRESSING**

Tel: 01628 528974

15 The Parade  
Bourne End  
Bucks  
SL8 5SA



**MAINTENANCE &  
LANDSCAPING**

Property Maintenance, Professional  
Landscaping, Fencing,  
Specialist Patios,  
Paving, Tree Surgery, Etc.

DAVID J KIMBER, 01628 810361 07850 124241

**R L SERVICES**

ICI Dulux Approved

**Decorator**

Established locally for over 30 years  
All aspects of decorating including

- Specialist Work
- Free Estimates
- Guarantees
- Under Dulux service

**I can offer a 12 month Guarantee**

**01494 511903**

**Mobile 07984780686**

# Past times...by Barrie Penfold

## Wooburn's Glory Mill

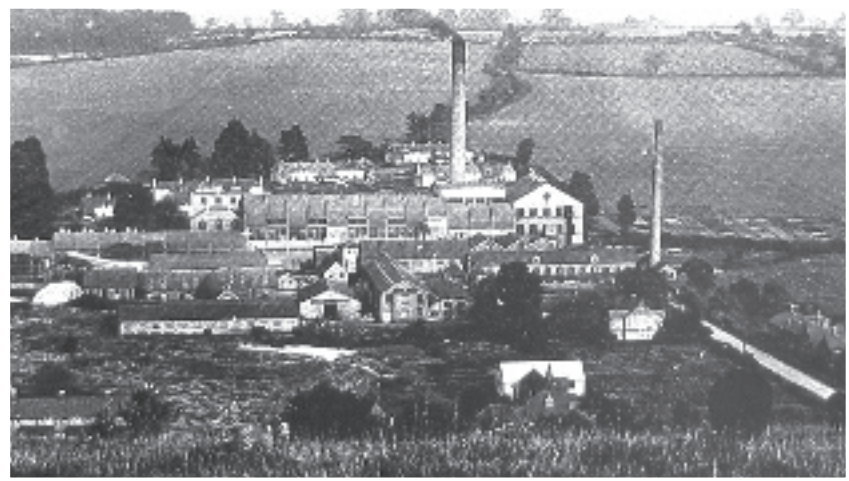
A knight called John de la Gloria provided its name, the river Wye produced the power to keep its wheels turning and it was part of the industrial heart of Wooburn Green for centuries.

Today the glory days of Glory Mill are memories when older people get together, its name remains in a few roads –keeping alive the history of a Wooburn Green mill.

Mills along the River Wye started out grinding corn, but their livelihood would have depended on how much corn was grown locally and could be badly affected by a poor summer. Mills would have changed hands when an owner ran out of money and the new owners might diversify. One way was to prepare cloth for the weaving industry. Using the same principles, the next move was to make paper.

While the art of paper making goes back to ancient China it's first recorded in England in the 1490s when the power of a watermill pulped rags into fibres. This was then mixed with water and drained. When dried these fibres clung together and created sheets of paper. No doubt all mills will have experimented with the process but in 1612 there is the first reference to Glory Paper Mill. But they weren't the only paper makers along the River Wye – making paper was highly profitable.

There was a downside to making paper from rags. The process was noisy, as the hammers worked even on Sundays. Then there was the smell from the bulk quantities of rags along with the rumours that they carried the plague. In 1636 all paper mills in Bucks were closed for this reason.



No paper meant no income. Workers found themselves destitute and were forced to apply for relief from their parish.

Then a private act encouraged the manufacture of white paper. Glory Mill was making paper of a superior quality for printing. It was a prosperous period. Mechanisation was undoubtedly the next move. Those in charge at Glory listened but were slow to action.

This hesitation saved them from attack in 1830 when rioters set out to smash the new machines which they believed would take their jobs. But there was no stopping the Industrial Revolution and by 1850 Glory Mill had a Fourdiner machine making good white paper for the stationery market. It was the start of a century of paper making that would change the face of Wooburn Green, increasing the population of the village and creating a community centred on the mill both for work and leisure.

In 1894 Wiggins, Teape & Co bought the mill with the intention of continuing to provide quality Conqueror stationery. But four years later the mill was gutted by fire. Everyone rallied around, other mills offered production space, workers were found temporary employment at other mills and rebuilding included new, more modern, paper making machines.

By 1901 Glory Mill was back in full production. The outbreak of the First World War saw the mill embark on the production of photographic paper - previously imported from France and Germany. Photography then became a national pastime. New, larger, machines were installed to meet demand, at home and abroad. As photographic reproduction improved a research and development department was set up at Glory Mill.

The outbreak of the Second World War saw workers joining up and it is a tribute to the mill that they were paid a standard wage during their service. From 1945 production increased, especially in export markets, until a series of quality issues affected production and resulted in redundancies and huge financial losses.

In 1993 Agfa-Gevaert ended its contract with Glory Mill and their work was given to Felix Shoeller in Germany. In 1995 this company bought Glory Mill.

There were more redundancies and eventually the last roll of Glory Mill paper was made in October 1999. As it finished the works hooter, specially renovated for the occasion, sounded three long blasts. The Glory Mill site was shut down by 2000 and was redeveloped with offices, housing, a leisure centre and a new church.

**Just a potted history** of an industry that created Wooburn Green. Much of the information came from a wonderful book written by former Glory Mill man, Alan Mead. After three reprints Alan decided that "Days of Glory" should take its place in the library at The Mills Archive and will be listed in the archive's catalogue. The Mills Archive was established in 2002 and has rescued over a million documents, putting them into secure storage where they are available for anyone doing research on this great industry which created communities, especially along the valley of the River Wye. To find out more you

can email them at [info@millsarchive.com](mailto:info@millsarchive.com) or go to their website at [www.millsarchivetrust.org.uk](http://www.millsarchivetrust.org.uk)



Our photo shows Alan Mead with daughter Janet and son David when they put 'Days of Glory' into The Mills Archive

## OUR LOCAL CHURCHES KEEP IN TOUCH

### St Paul's and St Mary's Church Wooburn

Theatre in the Villages returns to St Paul's Church Hall on Saturday November 2. 'Movies and Musicals' promises to be an evening of fabulous songs from Hollywood and Broadway, in a fun and lighthearted presentation, performed by acclaimed West End singers Jayne O'Mahony and John Langley. Contact Val Berry at the church office on 01628 525512 Monday mornings or on 01628 532394 weekday evenings for tickets. Our website will have more details.



As a church family we support The Walk Centre in Nakuru, Kenya, and early next year a group is travelling out to help with various projects. We are making 'pillow-case' dresses and shorts for the children – if any readers are interested in getting out their sewing machines to help please contact Sam through [dressesmadewithlove@aol.co.uk](mailto:dressesmadewithlove@aol.co.uk).

At a Christmas Fair on Saturday November 23, 11.30am to 4pm, lunches and teas will be available, and we're expecting a special person to visit!

St Mary's continues as a busy pastoral centre, although our Tuesday Toddler Group with the local Health Visitors has had to close due to withdrawal of funding for their baby weighing clinic. Our Friday Communion service and lunch starting at midday continues to be very popular. Tots Praise on Fridays in St Paul's church hall is at 9.45am.

The church hall and garden in Town Lane, Wooburn are available for bookings through the office on 01628 525512, e-mail to [stpaulswooburnparishoffice@gmail.com](mailto:stpaulswooburnparishoffice@gmail.com). See [www.stpaulswooburn.org](http://www.stpaulswooburn.org)

### St Nicholas' Church

We welcomed our new rector, the Rev Janet Binns, in September. Do come and meet her.



We celebrated harvest and then held an animal welfare service. On November 15 we are holding a talk in St Dunstan's Church Hall on the history of the John Lewis Partnership and the new fabric archive opening beside the Odney Club. Tickets are £10 with wine and nibbles. To book contact Maura on 01628 530181.

Do come along to our Sunday morning service at 9am and witness not only the peace of our church but also the autumnal mellowness of the views down the valley. Our children's Pebble Group meets on the third Sunday of each month.

### St John the Baptist, Little Marlow

The church had a very successful stall at the Little Marlow Fete, our thanks to all who supported. Our Harvest Festival will be on Sunday October 13 at 11am followed by a Harvest Lunch in the Church. All are welcome and our gifts will be shared by the One Can Trust and Wycombe Shelter.

Our Remembrance Sunday service on November 10 will take the form of Mattins and Act of Remembrance starting at 10.45am.

After three years as a member of the



Marlow Team Clergy, Paul Hinkley will be leaving us at the end of October to take up an appointment in Bristol. We wish Paul and Julie well in their new location. See our website [www.marlowanglican.org](http://www.marlowanglican.org)

### St Dunstan's Church, Bourne End

We said our goodbyes to Father Andrew in August. We wish him well and will remember him in our prayers.

With the start of school, normal church activities resumed, including the monthly Charity Sales starting on September 7.

The programme for preparing children for receiving the First Sacraments begins in early October. These children will receive their First Holy Communion in June 2014.



This year for their pilgrimage our parishioners will visit Assisi from October 10 to 14 - just after Pope Francis makes his visit to celebrate the Feast of St Francis. Parishioners will be attending daily Mass in the Basilica and it should be a wonderful pilgrimage.

### The Community Church, Wooburn Green

Our Sunday morning services this autumn will, amongst other things, focus on the question "So what's so good about the Good News?" They are held every Sunday with refreshments served from 10am and the service starting at 10.30am. There are children's groups and a crèche. Once a month we are at the Chapel on the Green, the rest of the time at Meadows School.

A new free seven-session parenting course has started (with crèche). To book a place contact Jo Maynard on 01628 526248 or email [joanne.maynard@btinternet.com](mailto:joanne.maynard@btinternet.com)

To express your interest in a future CAP money course on managing your finances contact Peter Lisle on 07802 450069 or email [peterlisle@o2.co.uk](mailto:peterlisle@o2.co.uk)

We will be running an Alpha course early in the new year. This is a relaxed and informal way to find out about Christianity.

For more details contact Tim Andrews on 01628 532238 or email [twajma@gmail.com](mailto:twajma@gmail.com)

All our other activities continue as normal in the hall at our Chapel: Little Steps baby and toddler group every Thursday 10-11.30am, Dad's Little Steps (babies, toddlers and Dads) on the first Saturday of each month 10-11.30am, and our lively and popular Thursday Lunch Club 12.30-2pm. Don't miss out! See our website [www.wooburngreen.org](http://www.wooburngreen.org)



### Cores End United Reformed Church

Our harvest festival supported One Can and the Wycombe Homeless Shelter.

Cores End and Trinity URC have been meeting regularly to look at our church profiles in preparation for calling a minister to cover both churches.

Despite having no minister at present, our pulpit supply team ensures that we always have varied,

interesting and inspirational services.

In October we hold a quiz and supper evening, and our Yule Fayre is on November 30, 10am-midday in the Community Centre. Please come and look at some of the lovely Christmas gifts, home-made cakes and preserves, and order fresh Christmas door swags and table decorations plus many other stalls. Or just pop in to enjoy brunch and a chat with friends and neighbours.

At our Tuesday Link-Up Club on October 8 we have the Rev Liz Payne talking about Travels with a Midwife, on October 22 we have a talk about Travels in France, Germany and Switzerland, and in November we have a cookery demonstration, a talk about the history of Guy Fawkes, Yule Fayre craft making and entertainment from our own Geoff Britt. Everyone is welcome.



### St Mark's Church

On October 6 our Sung Eucharist service at 10.30am is followed by refreshments. Our Songs of Praise service is on October 13 at 10.30am. Come and sing some well known hymns with us.

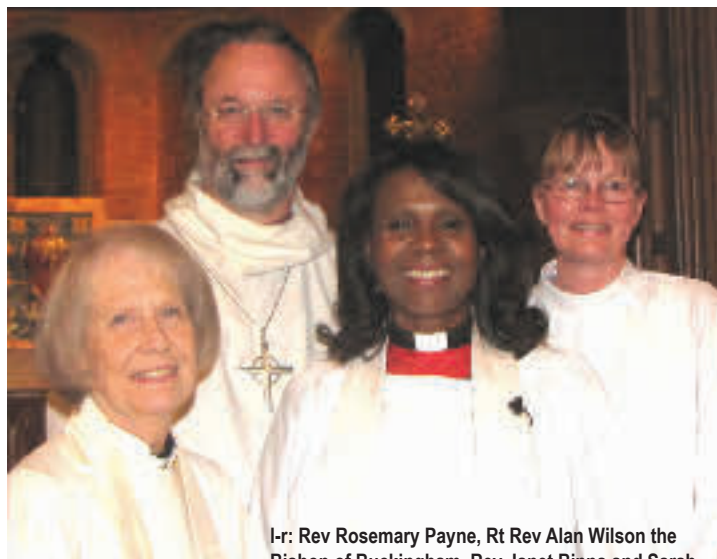
Our monthly market is on Saturday October 19, 10am-midday in the church hall. We look forward to seeing you.

Sunday November 3 sees our Sung Eucharist service at 10.30am, followed by refreshments. Also that day we hold our annual Service of Light at 6pm in the church to remember loved ones who have died. For more information contact the Rev Rosemary Payne on 01628 523034.

The Remembrance Sunday Service on November 10 is at 10.30am in St Mark's.

Our Countdown to Christmas fair is on Saturday November 16. Join us for a festive occasion in St Mark's Church and hall and pick up some early Christmas bargains, with cakes, tombola, nearly new clothes, books, toys, preserves and chutneys and a Christmas raffle plus refreshments.

Pick up our monthly 'What's Happening' newsletter, e-mail [cottrelljane@hotmail.com](mailto:cottrelljane@hotmail.com) or ring the parish phone on 07949 059187.



l-r: Rev Rosemary Payne, Rt Rev Alan Wilson the Bishop of Buckingham, Rev Janet Binns and Sarah Byng pictured in St Mark's Church after Janet's licensing as the new rector for the parishes of Hedsor and Bourne End

Please call into the centre and pay 50p for your copy of Target

# COMMUNITY CENTRE



## It's your Community Centre but do you use it?

We want your feedback, comments and suggestions please. Please tick the boxes to indicate your answers

Have you been into the Community Centre in Wakeman Road: LAST WEEK?  LAST MONTH?  LAST YEAR?  NEVER?

Do you know what activities are on offer here? Yes  No

Please tick which of these you are aware of at the centre:

Amateur Drama  Short Mat Bowls  Darts  Bingo  Flower Club  Family History  Jazz in the bar

Have you used the Community Centre for any of these: WEDDING  CELEBRATION  REGULAR CLUB  BAR

If you've never been into the Bourne End Community Centre - is it because: NOT MY STYLE  DISLIKE CLUBS

DON'T KNOW WHAT'S THERE  OTHER (please explain) .....

What might persuade you to use the centre?: CINEMA CLUB  ART/ OTHER EXHIBITIONS  KARAOKE & TALENT EVENTS  TALKS   
WORKOUT SESSIONS  LIVE BANDS  OTHER please give some ideas: .....

Would you hire a hall at the Community Centre for an event? YES  NO  If not, why not?.....

Where do you socialise locally? ..... Does this change regularly? YES  NO

Would you consider meeting at the centre YES  NO  Would you volunteer to organise events at the Community Centre? YES  NO

Do you volunteer your time to a charity: YES  NO  (If YES which one?.....)

Do you enjoy reading *Target* magazine? YES  NO  Have you ever responded to an advertisement? YES  NO

Do you check out the local events? YES  NO  Would you pay £1 per issue for it? YES  NO

Have you visited the website [www.bourneendbucks.com](http://www.bourneendbucks.com)? YES  NO  Would you like an events newsletter by email? YES  NO

OPTIONAL: Please give your name, address, telephone number or email address.....

All named responses will go into a draw for a bottle of champagne – donated by the Community Association. Return to: B E Community Centre, Wakeman Road, Bourne End, Bucks SL8 5SX, the collection box in the Library or Breeze on The Parade. *Thank you for taking the time to give us your views.*

### Volunteer Required

A volunteer is required to oversee the presentation of the accounts of the Bar in the Community Centre. Experience of accountancy and associated IT analysis would be required.

Can you help? If so, please contact George Parker or Jeremy Ilic at the Community Centre to discuss. Tel: 01628 522604.



South Buckinghamshire Branch  
Charity number 269425

### National Autistic Society S

The National Autistic Society South Buckinghamshire Branch will be holding a quiz at the Bourne End Community Centre on Saturday 12th October.

The quiz is for teams of up to eight people and will be held from 7.30pm to 10.30pm. The quiz is made up on the night. All proceeds go to the National Autistic Society. For more information contact the National Autistic Society South Buckinghamshire Branch of the National Autistic Society from Helen or Jeremy Ilic on 01628 522604.

## About the Community Centre

The Bourne End Community Centre in Wakeman Road offers excellent facilities which are enjoyed by a variety of groups which meet to enjoy their chosen sport, activity or recreational hobby. There are regular music and drama events in the theatre hall, and a comfortable bar is open every day.

Sections of the Community Association with weekly bookings include Forum Players, Chess, Short Mat Bowls, Darts, Petanque, Wedmorn Badminton and Musical Players – you can read their latest news on these pages. And turn over to pages 38-39 for updates from the affiliated groups which meet every few weeks.

## BOURNE END (BUCKS) COMMUNITY ASSOCIATION Me

<b>INDIVIDUAL MEMBERSHIP</b> over 18 years of age	£5
<b>JUNIOR MEMBERSHIP</b> under 18 years of age	£5
<b>FAMILY MEMBERSHIP</b> husband/wife/children of school age	£10
<b>ASSOCIATE MEMBERSHIP</b> (outside the area of benefit)	£5
<b>ASSOCIATE FAMILY MEMBERSHIP</b> (outside the area of benefit)	£10
<b>SENIOR CITIZEN MEMBERSHIP</b>	£3
<b>SENIOR CITIZEN FAMILY MEMBERSHIP</b>	£4
<b>LIFE MEMBERSHIP</b> husband/wife/children of school age	£60
<b>SINGLE LIFE MEMBERSHIP</b>	£30

Annual subscriptions are payable on or after 1 January each year.

Family membership carries one vote. Associate and Junior Membership carry no vote.

Area of Benefit – includes Bourne End, Cores End, Hedsor, Northern Woods, Little Marlow, Well End, Wooburn and Wooburn Green.

## DANCING FOR AIR AMBULANCE

Every August Barbara and David hold a dance at the community centre to raise money for charity. One of their favourite charities is the Air Ambulance which covers the Thames Valley and Chilterns. "We always get a great response for this special dance" Barbara explained "and this year was no exception."

Barbara and David try to make the charity dance extra special and they're delighted that £630 was raised from the evening. "I just want to thank everyone who came along" Barbara said "Many were our regular monthly dancers but there were many more who wanted to support this special charity."

Check out the calendar on page 39 for dates of the social dances at the community centre.



**Calling all sport and pub lovers...The bar at the Bourne End Community Association has the BT Sport channels showing live Barclays Premier League matches - some of which are no longer available on Sky Sports! And lots of other sporting action too...**

## South Bucks Branch 10th Annual Quiz Supper

The South Bucks Branch Annual Quiz Supper takes place at Bourne End Community Centre on Friday October 12, at 7.30 for 8pm start.

Teams of 4-6 people; smaller teams are welcome or, for those who wish, teams can be formed from this event will go to support the work of the South Bucks Branch of the National Autistic Society which is run by volunteers and supports more people with autism. Tickets are £8 including a light supper and are available on 01628 850332 or from the community centre office.

## Membership costs and application form

### APPLICATION FORM

Cut out and send or hand to:

The Manager, Bourne End Community Centre,  
Wakeman Road, Bourne End, Bucks SL8 5SX

NAME.....

ADDRESS.....

Email address: .....

TYPE OF MEMBERSHIP..... AMOUNT PAID.....

## President's Challenge



Number 77

Answer these questions, set by Community Association president Penny Walsh, and hand in the form at the Community Centre (along with your £1 entry fee) for a chance of winning Penny's special mystery prize. All money raised will go to the centre.

This quiz is about homophones: two words spelled differently but pronounced the same. Brief definitions are given, first letter(s) are given in brackets.

Example: Q. A pace/ Russian plain (S). A. Step/ Steppe.

1. Load, Burden/ Linger, Queue (W)
2. Form letters on paper/ Religious observance (W/R)
3. Dance, Globe/ Yell, Shout (B)
4. Wan, Sallow/ Bucket (B)
5. Bloom, Blossom/ Ground corn (F)
6. Auction, Market/ Sheet of canvas on yacht (S)
7. Smash, Shatter/ Decelerate (B)
8. Beer/ To be sickly (A)
9. A body of Scouts or soldiers/ Company of actors (T)
10. Check, Curb/ Precipitation (R)
11. Plank, Company directors/ Worn, Uninterested (B)
12. Manufactured/ Young girl (M)
13. Cutting tool/ Tots up (A)
14. eg T-bone/ Pole, Post (S)
15. Pleated collar/ Uneven, ungentle (R)
16. Aptitude/ Blaze up, Distress signal (F)
17. Flower of England/ Fish eggs (R)
18. Verify, Restrain/ Bank counterfoil (C)
19. Take by theft/ Iron plus carbon (S)
20. Exhaust/ Rubber around a wheel (T)

The closing date is Friday, November 8

NAME:.....

ADDRESS:.....

..... TEL:.....

ANSWERS TO QUIZ No 76

1. Spin/Nips 2. Span/Naps 3. Able/Elba
4. War/Raw 5. Spot/ Tops 6. Mood/ Doom
7. Stun/ Nuts 8. Abut/ Tuba 9. Strap/ Parts
10. Edam/ Made 11. Sore/ Eros 12. Stressed/ Dessert
13. Skua/ Auks 14. Rennet/ Tenner 15. Tool/ Loot
16. Warder/ Redraw 17. Etnal/ Ante 18. Regal/ Lager
19. Flow/ Wolf 20. Eton/ Note. The winner of Quiz 76 was WP Langford, Goddington Road, Bourne End.

## OUR GROUP MEMBERS KEEP IN TOUCH

### 1st Bourne End Scout Group

The good weather enabled the cubs to have a super camp and come home with dry canvas. Their camp was at Pheasants Hill, where I did my first camp in 1981 as a helper.

The leaders have had a holiday break to chill out, wash their red/white scarves, and press their uniforms.

We also met to put the programmes together for the coming year. Programmes cannot be repeated too often as scouting is moving forward all the time with new ideas and challenges, actively encouraged by our Chief Scout Bear Grylls.

The boys and girls will have had a chance to show off their skills at home which were learnt from scouting. They can wash up, cook on an open fire, and walk safely when out and about.

The Scout group is doing very well, with some leaders moving from one role to another within the group, and new parents taking on a leadership role or volunteering to help most weeks. It is wonderful that a small village has such a vibrant Scout group.

Contact Roy Harris 01628 526805 or membership secretary Jenny Benning 01628 526805.

### Bourne End District Rainbows, Brownies & Guides

At a Roald Dahl themed camping weekend we had fabulous weather and the Brownies had a great time helping to prepare meals on a campfire. They enjoyed crafts, a hike, parachute games and a traditional campfire complete with hot chocolate and marshmallows.

The Brownies benefitted from a new lightweight tent thanks to a donation received from Sainsbury's Local Hero scheme. Brown Owl, Karen Green who works at Sainsbury's in Flackwell Heath was chosen for the scheme



thanks to her commitment of over ten years to Bourne End Brownies.

We have one Rainbow unit (age 5-7), three Brownie units (age 7-10) and one Guide unit (age 10-14). For details of how to join see [www.girlguiding.org.uk/interested](http://www.girlguiding.org.uk/interested). We need new leaders to help keep our Rainbow and Guide units open, could you help us? Contact Di Morrish (District Commissioner) 01628 528998 email: [morrishwg@aol.com](mailto:morrishwg@aol.com)

### RNLI Bourne End & District Branch

Two-day supermarket collections took place at Waitrose and the M40 Service Station, both in Beaconsfield, raising the very satisfactory totals of £1,983.55 and £1,356.03. Our next two-day collection will be at Sainsbury's Beaconsfield on October 18 and 19. Grateful thanks go once more to all our helpers and supporters and the generosity of the public.

Recently John Tournier was asked to show the DVD "Lifeboat Heroes" to a small group of Suez Campaign veterans and their wives at the Royal British Legion Flackwell Heath.

The film was very well received and a collection raised £34.15. Our thanks go once more to John Tournier. If any local organisations are interested in seeing it, I am sure he will do his best to accommodate dates. Just give me a ring on the number below.

Husband John and I are still doing the rounds of pubs, clubs and shops, emptying static boxes. Unfortunately pubs are disappearing and we have had to remove collecting boxes from two local venues. Nevertheless we are on the way to achieving this year's fundraising target of £20,000 plus. I now have Christmas cards, calendars and diaries and wrapping paper in stock, and also Lifeboat Teabags at £2 a box. Ring me if you would like a Christmas flyer. I can supply these goods post free. Diana Spokes 01628 523736

### Bourne End Flower Arrangement Society

On Tuesday October 1 our demonstration by National Demonstrator Pat Dibben is entitled *A History of Flower Arranging*. On Tuesday November 5 the demonstration by Annette Parshotam is on the theme *Blooming*

*Marvellous*. They take place at Bourne End Community Centre, Wakeman Road at 8pm, non-members welcome, entry £5.

### Townswomen's Guild

On Wednesday October 9 Colin Oakes will talk to us about London after the Second World War. Then on Wednesday November 13 we will test our grey matter with an afternoon of games. You are welcome to join us in the small hall at the Community Centre at 1.30pm on the second Wednesday in the month. For more information ring Cynthia Houchin on 01628 527931.

### Bucks Family History Society

Delving back into old records will be the subject of the talk by Paul Blake on Tuesday October 8. *The Tithe, Its History, Records and Administration* will take us back to 1836 when the system of paying the tithe 'in kind' finally ended with the Tithe Commutation Act. The records resulting from this Act detail the owners and occupiers of much of the land in England and Wales, as do records from the previous decade for Ireland.

Our computer session on Tuesday November 12 will be presented by Brian Horridge under the heading *How Do You Do That?* There will be short presentations on a range of computer-related topics as well as a question and answer session on hardware and software.

Doors open at 7.15pm in the small hall at the Community Centre with the talk at 7.45pm. Non-members are welcome – just make a donation to funds – or why not become a member?

### Wye Valley Volunteers

Following all the excitement of receiving the Queen's Award, we rapidly came down to earth when we were presented in with maintenance bills for the community minibus totalling nearly £3,000. After 12 years of hard use the minibus is showing its age and is no longer financially viable.

So... we are starting a fundraising campaign to buy a good quality, secondhand replacement minibus. The community minibus is an essential part of WVV's services. It enables some of the most isolated and vulnerable local people, mainly elderly and some with severe mobility problems, to attend social functions such as the regular coffee mornings and the luncheon club and thus to remain integrated in the community. The weekly shopping trips in the minibus for people in sheltered accommodation enable further social contact as well as the practical opportunity to shop for provisions. When not required for the regular journeys or by the Day Centre (see below) the community minibus can be hired by local groups such as the Scouts, the WI and youth clubs at a competitive rate.

Additionally, since December 2012 we have been delighted to help Bourne End Day Centre. The minibus has transported clients to and from the Centre on four days a week which will increase to five as client numbers grow.

We have started a round of grant applications and requests to various local businesses and charities – we estimate we need to raise £25,000 to purchase and put on the road a suitable vehicle.

We would be delighted to hear from readers of *Target* of any suggestions for fundraising, or offers.

If you would be interested in volunteering or if you yourself need some help do please contact us at the Community Volunteer Office (portakabin to the right of the Community Centre). The office is open from 10am to noon on weekdays, telephone 01628 521027.

### Bourne End Twinning Association

On a sunny Saturday in August, 50 of us gathered for our annual garden party, followed by a raffle and a fun quiz.

At our coffee morning in the library on October 11 at 10.30am you are invited to learn more about our association and our twin village

of Octeville-sur-mer in northern France. Our autumn dinner on October 26 is open to non-members. You would be welcome to join us to meet members and chat about the fun to be found in belonging to Bourne End Twinning Association. Dinner will be followed by entertainment from the popular local banjo group Banjovees. For details ring Liz Yeeles on 01628 521748.

#### **Soroptimists International Thames Valley**

We have been supporting the Kori Women's Development Project for several years. The project seeks to empower women and girls in the Taima area of Sierra Leone by helping them grow crops and offering micro loans.

The club also donates clothes and bed linen for their local hospital to be shipped out in containers which we also pay for. To raise funds for the latest shipment, an August tea party was held in the garden of Gill Curry, a former president of the club, which included tombola, games for the children, a "recycled treasures" stall and a raffle.

It was a true community event with cakes and drinks generously provided by some of the congregation of St Luke's Church in Maidenhead. Spirits were not dampened by the frequent sudden rain showers and £600 was raised which will help make sure that the shipment leaves in time for arrival at Christmas in Sierra Leone.

This is just one of the projects that SI Thames Valley runs. See [www.sitv.org.uk](http://www.sitv.org.uk) or come along any third Tuesday in the month at 7.30pm to the Target Room at the community centre.

#### **Wooburn Park Lawn Tennis Club**

Our summer league programme has now been completed and we are about to make winter fixtures.

Club finals took place on September 14. Junior and senior coaching will continue during the winter. Contact for juniors is [janet@brookfield.entadsl.com](mailto:janet@brookfield.entadsl.com) and for seniors [anneharttennis@hotmail.com](mailto:anneharttennis@hotmail.com).

#### **Bourne End Video Makers**

The club provided several members to help film the Meadows School Centenary Fair in June and the musical statues Guinness World Record attempt. Sadly the numbers didn't quite make the record, but there was plenty more entertainment on the Green.

The club completed its Storyline film *On the Rails* about a model railway enthusiast. Filming took place in a member's garden and most of the members got involved in some way or other.

We ran a successful bring-and-buy event in June and one of the members hosted a summer barbecue at his home which proved very successful with an enjoyable quiz.

Our new winter programme is now available and our first external competition is on October 8 against Reading and Staines, with Reading hosting.

Meetings are held in the Target Room at the community centre on the first and third Wednesdays of the month from 7.30pm to 10pm.

We welcome new members of all standards and interests. Contact David Jarman on 01494 712441 or see [www.bevm.co.uk](http://www.bevm.co.uk).

# CALENDAR OF VILLAGE EVENTS

Events in the community centre unless otherwise stated

## OCTOBER

- 1 Tues Bourne End Flower Arrangement Society demonstration by Cherie Mendis, 'Through the looking glass' 8pm at the community centre, non-members welcome, entry fees apply.
- 1 Tues CentreJazz: live music from 8pm in the community centre bar. Admission £5 includes raffle.
- 3 Thur Community Centre Bar Quiz starts at 8.30 pm. Entry £1 per person, and the winning team gets the quiz takings from the night.
- 10 Thur Bourne End WI singing and dancing to the tunes of Abba, with quiz, raffle and refreshments. See page 29 for info.
- 4 Fri Bingo in the community centre. The fun starts at 2pm.
- 6 Sun Bourne End Concert Orchestra 7.45 in the community centre. Tickets £10 see details page 28.
- 11 Fri Bingo in the community centre. The fun starts at 2pm.
- 12 Sat Bourne End Community Market 10am – 1pm in the Library.
- 12 Sat National Autistic Society annual quiz supper at the community centre 7.30pm for an 8pm start. Ticket information page 36.
- 13 Sun Magpie's Nest antiques fair 9.30am to 3.30pm.
- 18 Fri Bingo in the community centre. The fun starts at 2pm.
- 18 Fri Social dance with Barbara and David at 8pm. Good dancing in friendly company.
- 19 Sat St Mark's monthly market in the church hall from 10am to 12 midday with coffee and cakes.
- 20 Sun Table top sale at the centre 9.30am to 11.30am. Call Caroline on 01628 485642 to take part.
- 25 Fri Bingo in the community centre. The fun starts at 2pm.

## NOVEMBER

- 1 Fri Bingo in the community centre. The fun starts at 2pm.
- 3 Sun Magpie's Nest antiques fair 9.30am to 3.30pm.
- 5 Tues CentreJazz: live music from 8pm in the Community Centre bar. Admission £5 includes raffle.
- 5 Tues Bourne End Flower Arrangement Society demonstration by Annette Parshotam, 'Blooming Marvellous' 8pm at the community centre, non-members welcome, entry fees apply.
- 7 Thur Community Centre Bar Quiz starts at 8.30 pm. Entry £1 per person, and the winning team gets the quiz takings from the night.
- 8 Fri Bingo in the community centre. The fun starts at 2pm.
- 9 Sat Bourne End Community Market 10am – 1pm in the Library.
- 14 Thur Open meeting followed by AGM, Future of Our Village Forum in Jackson Mill room, library at 7.30 pm.
- 15 Fri Bingo in the community centre. The fun starts at 2pm.
- 15 Fri Social dance with Barbara and David at 8pm.
- 16 Sat St Mark's Countdown to Christmas fair at the church hall.
- 17 Sun Table top sale at the centre 9.30am to 11.30am. Call Caroline on 01628 485642 to take part.
- 22 Fri Bingo in the community centre. The fun starts at 2pm.
- 23 Sat St Paul's Christmas Fair at the church hall from 11.30am to 4pm with lunches and teas and a visit from a special person.
- 24 Sun Big Band Concert in aid of THROB (The Heart Rehabilitation Organisation of Berkshire) at the community centre 7.30pm. Tickets, £11 from the community centre office, include coffee/tea and a mince pie.
- 29 Fri Bingo in the community centre. The fun starts at 2pm.
- 30 Sat Yule Fayre at Cores End United Reformed Church 10am to midday in the community centre.

*The next issue of Target will cover December 2013 and January 2014.*

*Email [editor@targetmagazine.org.uk](mailto:editor@targetmagazine.org.uk) by Friday November 8 to get your event included in the calendar. The magazine will be published on Friday November 29.*

**Please call into the centre and pay for your copy of Target**

# AROUND & ABOUT



Smiling faces of just a few of the helpers at this year's Community Association Summer Fete. See more pictures on the Target Magazine facebook page



Creepy House Crafts brought lots of little ones to the library for the launch of the Summer Reading Challenge. White balloons

were the Creepy House ghosts and they needed to be given spooky faces. With dad to hold the balloon steady Sam (above) was able to concentrate on getting just the right expression on his spooky face. Michelle (below left) was creating a tail for her ghost while Acacia wanted to get her ghost looking really scary.



Claytons School mum, Melissa Wright (second from right on the back row) made a bid for a Community Project by Telephonica (Slough). The company supported her bid and brought 12 volunteers (including two flown in from Germany) to renovate and brightly paint some of the school's wooden outdoor structures during the summer holidays



Kath Acres sent in this lovely photo of the Heart Tree on Spade Oak Wharf which is festooned with knitted hearts. She says: "It is on the spot where Ollie's Pop Up Cafe was and where a substantial trunk of the tree fell down the next day. There are heart knitting patterns attached to the tree and the suggestion is that more people knit hearts and hang them on the tree. About 60 patterns have been taken so far (one even going to Brazil) and lady called Lisa (who was moored at the wharf) is sending me the spun hair of her Golden Doodle (a cross between a Retriever and a Poodle) who had just been clipped to knit a heart from - It's guerilla knitting!"

Send your local stories and pictures to [editor@targetmagazine.org.uk](mailto:editor@targetmagazine.org.uk)